

MONTHLY SURVEY OF INDUSTRIAL PRODUCTION & EMPLOYMENT IN SINDH



**December,
2019**

Industries Section, BOS



**BUREAU OF STATISTICS
PLANNING & DEVELOPMENT DEPARTMENT
GOVERNMENT OF SINDH**

FOR OFFICIAL USE ONLY

Sindh Monthly Survey of Industrial Production & Employment (MIPE)

December, 2019



Bureau of Statistics
Planning & Development Department
Government of Sindh
www.sindhbos.gov.pk
ddindustries.sindhbos.gov.pk

Preface

Monthly Survey of Industrial Production and Employment (MIPE) is being conducted/ published by Sindh Bureau of Statistics on regular basis since 1970s. This report provides important statistics in respect of industrial production & employment of large Scale Manufacturing (LSM) industries in Sindh.

This report contains information on 61 items manufactured in 22 selected large scale industrial sectors covering 535 industrial establishments (selection on the basis of CMI 2005-06). These industries account for 69.6% of total value added of large scale manufacturing sector in Sindh.

MIPE Report provides information regarding General Index and Quantum Index of Manufacturing (QIM) to base period 2005-06, and analytical analysis on the current status of production and employment in manufacturing sector.

All the efforts are made to improve the industrial statistics and hope this report would prove useful to policy makers, planners, researchers and other data users. Suggestion/ recommendations from the users will always be welcomed and appreciated.

Pervaiz Ahmed Chandio
Director General
Bureau of Statistics
Planning & Development Department
Government of Sindh

Contents

PREFACE	II
LIST OF TABLES	IV
LIST OF FIGURES	IV
LIST OF EQUATIONS	IV
MIPE TEAM (INDUSTRIES SECTION)	V
INTRODUCTION	1
QUESTIONNAIRE/ PROFORMA	1
METHODOLOGY	1
EDITING	1
QUANTUM INDEX OF MANUFACTURING (QIM)	2
REPORT ANALYSIS	3
ANNEXURE – A PROFORMA/ QUESTIONNAIRE	14
ANNEXURE – B IMPORTANT DEFINITIONS	15
ANNEXURE – C DATA USERS	16

List of Tables

TABLE 1: SERIES OF QUANTUM INDEX OF MANUFACTURING (QIM) AT (2005-06=100)	3
TABLE 2: PRODUCTION OF SELECTED ITEMS PERTAINING TO LARGE-SCALE MANUFACTURING SECTOR, DECEMBER-2019 Vs NOVEMBER-2019	5
TABLE 3: PRODUCTION OF SELECTED ITEMS PERTAINING TO LARGE-SCALE MANUFACTURING SECTOR, DECEMBER-2019 Vs DECEMBER-2018	7
TABLE 4: CUMULATIVE PRODUCTION OF SELECTED ITEMS PERTAINING TO LARGE-SCALE MANUFACTURING SECTOR,	9
TABLE 5: EMPLOYMENT IN SELECTED LARGE-SCALE MANUFACTURING SECTOR, DECEMBER-2019 Vs NOVEMBER-2019	11
TABLE 6: EMPLOYMENT IN SELECTED LARGE-SCALE MANUFACTURING SECTOR, DECEMBER-2019 Vs DECEMBER-2018	12
TABLE 7: AVERAGE MONTHLY EMPLOYMENT IN SELECTED LARGE SCALE MANUFACTURING SECTOR,	13

List of Figures

FIGURE 1: TREND OF QUANTUM INDEX OF LARGE SCALE MANUFACTURING INDUSTRIES AT BASE YEAR 2005-06	4
FIGURE 2: TREND OF AVERAGE MONTHLY EMPLOYMENT IN LARGE SCALE MANUFACTURING INDUSTRIES	4

List of Equations

EQUATION 1 LASPAYER'S INDEX	2
--	---

MIPE Team (Industries Section)

Team Lead:

Muhammad Kazim Jafri | Deputy Director

Team Members:

Ms. Rukhsana Aziz | Statistical Officer

Ms. Faeza Atiq | Statistical Officer

Support in Data Collection and Compilation:

Mr. Muhammad Younus Bukhari | Jr. Stenographer

Mr. Muhammad Akram Bhatti | Statistical Computer

Introduction

Industrial Sector is of great importance for economic development of country. It is historical fact that countries with strong industrial sector have showed more economic growth and development industrial sector have shown improvement in national income and promoted living standard of population. Industrial Sector is the highly important individual sector of the economy accounting for share of the Pakistan GDP.

Sindh Bureau of Statistics conducts Monthly Survey of Industrial Production and Employment (MIPE) to collect information on 61 items manufactured in 22 selected large scale Industrial sectors covering 535 establishments in Sindh. These industries account for 69.6% of total value added in terms of production during 2005-06, Census of Manufacturing Industries. In addition to collection, compilation, tabulation and processing of data, Bureau of Statistics also computes monthly Quantum Index of Manufacturing.

Questionnaire/ Proforma

A questionnaire/ Proforma is a research instrument consisting of a series of questions and other prompts for the purpose of gathering information from respondents. A pre-tested questionnaire is used for the data collection of industrial inputs related to employment and production, attached at **Annex-A**.

Methodology

The basic method of data collection for Sindh MIPE is the posting/ mailing of MIPE Questionnaires. More than 70% monthly returns are received to this Bureau through mail from industrial units. The non-responding or remaining establishments are visited by the officers/ officials of this Bureau, besides this the method of emailing, fax and telephonic approach are also used for collection of monthly returns and increase response rate.

Editing

All the received returns are scrutinized for accuracy and consistency with previous data by the Industries Section of this Bureau. As per *Unit Calculation Sheet* different units of similar products

are converted into the reporting units. In case of huge discrepancy between current and previous returns the factory management is approached to rectify that figures. In the absence establishment's return or non-availability of concerned person the average production of last month or the last month information is repeated.

Quantum Index of Manufacturing (QIM)

Sindh bureau of Statistics is computing Index on Industrial Production using 2005-06 as base year. Index Series is generated by using Laspayer's Index.

$$QIM = \frac{\sum_{i=1}^n \frac{q_{im}}{q_{i0}} w_i}{\sum_{i=1}^n w_i} \times 100$$

Equation 1 Laspayer's Index

q_{im} = Production of i^{th} item during the current month

q_{i0} = Average Production of the same i^{th} item in the base period (2005-06)

w_i = Weight of the i^{th} item in the base period (2005-06)

$\sum_{i=1}^n w_i$ = Total Weight of 22 large scale industrial sectors covering 535 establishments in the base period with respect to the total value added of all the industries covered in CMI in the base year 2005-06.

Report Analysis

Summary findings on the basis of Index of Industrial Production are as follows:

- Overall Production in December, 2019 is significantly decreased by 20.19% as compared to last month (i.e. November, 2019)
- Overall Production in December, 2019 is decreased by 11.78% as compared to corresponding month of last year (i.e. December, 2018)
- Cumulative production from July to December (2019-20) is almost same as the cumulative production from July to December (2018-19)
- Employment during December, 2019 decreased around 1% as compared to previous month (i.e. November, 2019)
- Employment during December, 2019 is 5.81% higher than December, 2018.
- Average monthly employment during the period of July-December (2019-20) is 6.18% higher as compared to the corresponding period of July-December (2018-19)

Table 1: Series of Quantum Index of Manufacturing (QIM) at (2005-06=100)

Month/ Year	2015-16	2016-17	2017-18	2018-19	2019-20
July	255.7	284.0	327.0	290.8	259.7
August	266.0	287.7	336.4	265.5	220.9
September	274.2	281.5	330.9	311.3	266.7
October	247.0	291.4	355.7	287.0	277.0
November	283.7	317.1	343.2	273.3	280.3
December	261.7	302.8	341.5	265.2	223.7
January	297.4	286.1	374.0	321.3	
February	293.2	283.3	324.5	309.0	
March	253.9	275.6	341.4	279.7	
April	250.6	276.8	338.5	258.2	
May	254.4	283.9	311.3	248.2	
June	259.0	258.1	307.4	257.6	
Average (Geometric Mean)	265.9	285.4	335.5	279.7	

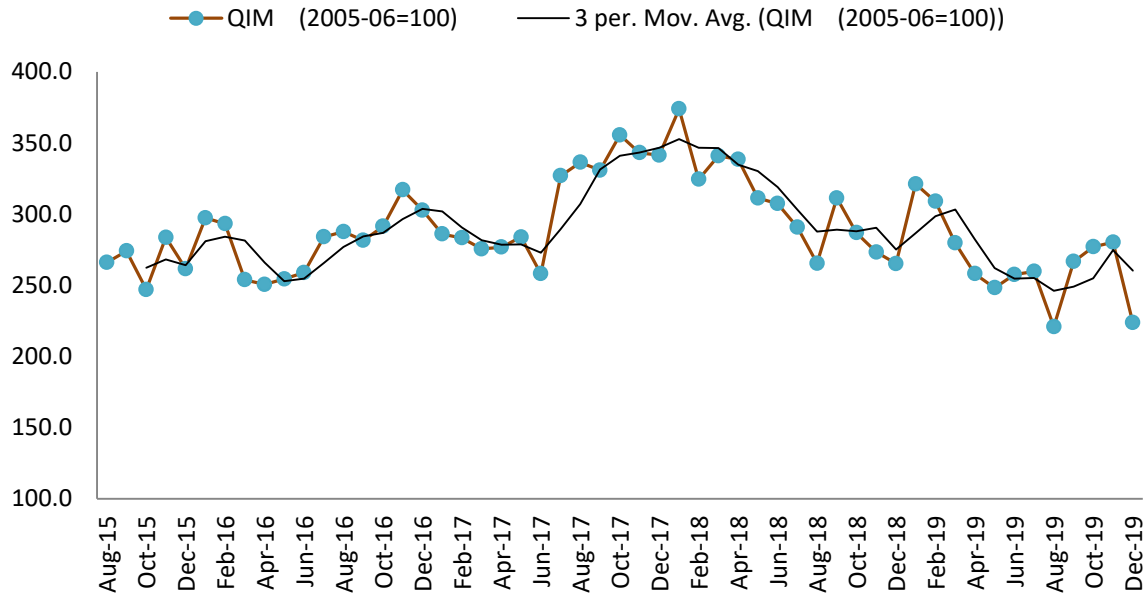


Figure 1: Trend of Quantum Index of Large Scale Manufacturing Industries at base year 2005-06

During the current month significant decline observed in the manufacturing production index. This index is almost the lowest index in the history of last three years. The main cause of this decline is the significant reduction in the petroleum and other products in Sindh.

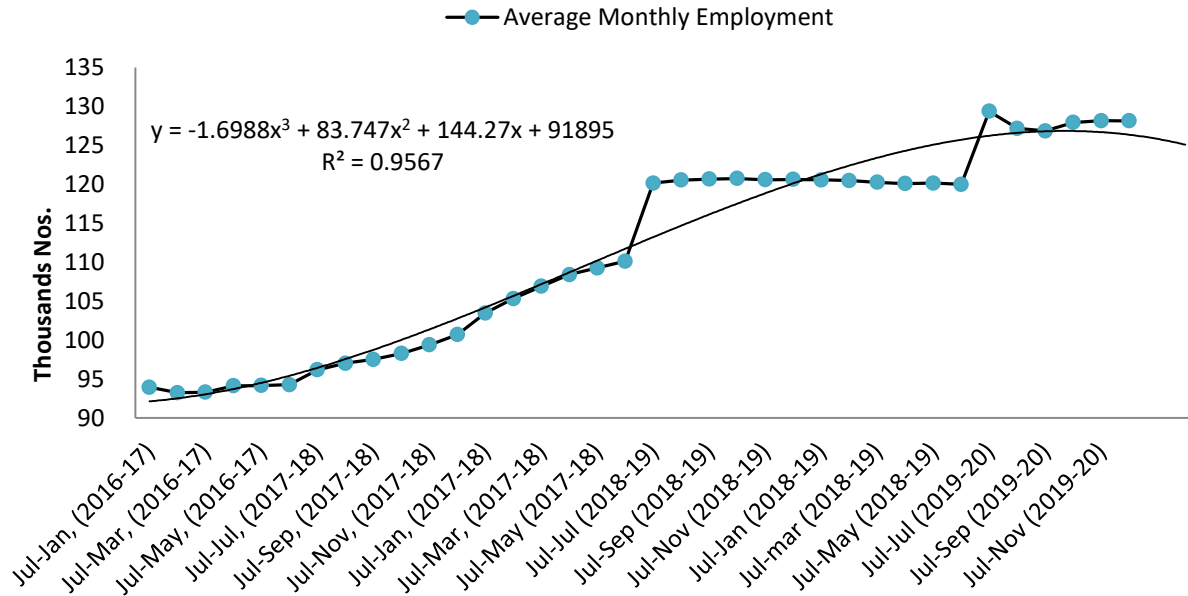


Figure 2: Trend of Average Monthly Employment in Large Scale Manufacturing Industries

Last three consecutive months shown almost uniform employment trend, however during the current month the significant decline is observed in production of Large Scale Manufacturing Sector which will impact on the future employment. The fitted quadratic model with $R^2 = 96\%$ is predicting slight decline in LSM Employment in near future.

Table 2: Production of Selected Items Pertaining to Large-Scale Manufacturing Sector, December-2019 Vs November-2019

Sr. No.	Industrial Sector/ Items	No. of Industrial Units as per CMI 2005-06	WEIGHT (2005-06)	Unit of Quantity	Production		Index of Production in Dec:2019 with Nov: 2019
					Dec:2019	Nov:2019	
1.	<u>VEGETABLE GHEE</u>	35	1.61				
i.	VEGETABLE GHEE		1.11	M.Tons	33,760	33,726	100.1
ii.	COOKING OIL		0.50	M.Tons	17,290	15,252	113.4
2.	<u>SUGAR</u>	26	4.32				
i.	SUGAR		4.32	M.Tons	50,056	17,684	283.1
3.	<u>TEA</u>	7	1.23				
i.	TEA		1.23	M.Tons	4,275	4,473	95.6
4.	<u>BEVERAGES</u>	13	0.85				
i.	BEVERAGES		0.85	"000" NOs.	84,722	81,722	103.7
ii.	WATER*		0.85	"000" NOs.	16,373	1,953	838.4
5.	<u>COTTON TEXTILE</u>	133	13.65				
i.	COTTON YARN		9.10	M.Tons	16,542	14,153	116.9
ii.	COTTON FABRICS		4.13	"000" Sq. M	12,200	12,203	100.0
iii.	M.M. YARN		0.42	M.Tons	487	971	50.2
6.	<u>LEATHER TANNING</u>	30	0.29				
i.	UPPER LEATHER		0.07	"000" Sq. M.	1,239	1,287	96.3
ii.	WET BLUE TANNED		0.22	"000" Sq. M.	108	105	102.9
7.	<u>COTTON GINNING & PRESSING</u>	85	3.30				
i.	C.G.& PRESSING		3.30	Bales	513,865	853,107	60.2
8.	<u>PAPER & PAPER BOARD</u>	6	0.01				
i.	PRINTING PAPER		0.01	M.Tons	408	407	100.2
ii.	WRITTEN PAPER		0.01	M.Tons	319	276	115.6
iii.	PACKING & OTHER PAPER		0.01	M.Tons	1,840	2,150	85.6
iv.	ADVERTISING MATERIAL*		0.01	M.Tons	30	33	90.9
9.	<u>PHARMACEUTICALS</u>	78	6.37				
i.	TABLETS		1.67	"000" NOs.	2,067,290	2,102,263	98.3
ii.	LIQUIDS/SYRUPS		1.97	"000" Liters.	6,976	7,353	94.9
iii.	CAPSULES		1.36	"000" NOs.	260,826	342,836	76.1
iv.	INJECTIONS		1.22	"000" NOs.	100,721	96,292	104.6
v.	OINTMENT		0.15	KGs.	231,557	233,610	99.1
10.	<u>ACID, ALKALIES & SALT</u>	3	0.04				
i.	SULPHURIC ACID		0.04	M.Tons	2,601	2,691	96.7
11.	<u>FERTILIZER</u>	3	3.50				
i.	UREA		3.50	M.Tons	238,825	212,402	112.4
ii.	AMONIA		3.50	M.Tons	40,666	117,902	34.5
iii.	DAP*		3.50	M.Tons	72,759	72,857	99.9
12.	<u>PAINTS & VARNISH</u>	9	0.32				
i.	PAINTS		0.32	M.Tons	124	117	106.0
ii.	VARNISH		0.32	"000" Liters.	496	528	93.9
13.	<u>SOAP</u>	38	1.66				
i.	WASHING SOAP		1.66	M.Tons	4,982	5,251	94.9
ii.	DETERGENT POWDER		1.66	M.Tons	14,663	14,518	101.0
iii.	TOILET SOAP		1.66	M.Tons	1,906	1,450	131.4
iv.	TOOTH PASTE*		1.66	M.Tons	777	780	99.6
14.	<u>PETROLEUM PRODUCTS</u>	2	9.32				
i.	L.P.G		9.32	"000" Liters.	205	2,846	7.2

Sr. No.	Industrial Sector/ Items	No. of Industrial Units as per CMI 2005-06	WEIGHT (2005-06)	Unit of Quantity	Production		Index of Production in Dec:2019 with Nov: 2019
					Dec:2019	Nov:2019	
ii.	NAPHTHA SOLVENT		9.32	"000" Liters.	10,356	29,174	35.5
iii.	KEROSENE OIL		9.32	"000" Liters.	260	1,619	16.1
iv.	H.S.D		9.32	"000" Liters.	78,313	116,844	67.0
v.	FURNACE OIL		9.32	"000" Liters.	7,339	60,538	12.1
vi.	ASPHALT 80-100		9.32	"000" Liters.	2,735	920	297.3
vii.	ASPHALT 60-70		9.32	"000" Liters.	-	3,589	0.0
viii.	MOTOR SPRIT		9.32	"000" Liters.	406	21,291	1.9
ix.	JET FUEL		9.32	"000" Liters.	9,185	19,903	46.1
x.	LUBRICATING OIL		9.32	"000" Liters.	-	-	
xi.	OTHERS*		0.00	"000" Liters.	63,542	28,745	221.1
15.	<u>TYRES & TUBES</u>	4	0.41				
i.	MOTOR TYRE		0.41	Nos.	219,482	204,060	107.6
ii.	MOTOR TUBE		0.41	Nos.	38,714	61,416	63.0
16.	<u>CEMENT</u>	11	3.86				
i.	CEMENT		3.86	M.Tons	152,204	158,793	95.9
17.	<u>M.S.PRODUCTS</u>	28	4.88				
i.	M.S PRODUCTS		4.88	M.Tons	4,493	4,493	100.0
18.	<u>SAFETY RAZOR BLADE</u>	1	0.40				
i.	SAFETY RAZOR BLAD		0.04	"000" NOs.	54,790	62,307	87.9
19.	<u>SEWING MACHINES</u>	3	0.25				
i.	SEWING MACHINES		0.25	Nos.	2,770	2,880	96.2
20.	<u>ELEC. APPLIANCES</u>	3	2.21				
i.	REFRIGERATORS		0.11	Nos.	39,959	26,480	150.9
ii.	AIR-CONDITIONERS		0.60	Nos.	2,619	311	842.1
iii.	DEEP FREEZERS		0.50	Nos.	290	148	195.9
iv.	WASHING MACHINES		0.50	Nos.	25,780	27,865	92.5
v.	MICROWAVE OVEN*		0.50	Nos.	32,063	26,088	122.9
21.	<u>AUTOMOBILE</u>	17	11.15				
i.	TRUCKS		2.71	Nos.	267	305	87.5
ii.	BUSES		0.77	Nos.	55	64	85.9
iii.	LCV'S		2.50	Nos.	529	644	82.1
iv.	MOTOR CYCLES		2.06	Nos.	131,398	141,167	93.1
v.	TRACTORS		0.25	Nos.	774	2,409	32.1
vi.	CARS		0.50	Nos.	8,373	6,744	124.2
vii.	VANS & JEEPS*		1.18	Nos.	201	363	55.4
viii.	THREE WHEELERS*		1.18	Nos.	3,780	3,834	98.6
	Grand Total	535	69.63				

*New items are reporting from selected companies added since July (2019-20)

Table 3: Production of Selected Items Pertaining to Large-Scale Manufacturing Sector, December-2019 Vs December -2018

Sr. No.	Industrial Sector/ Items	No. of Industrial Units as per CMI 2005-06	WEIGHT (2005-06)	Unit of Quantity	Production		Index of Production in Dec:2019 with Dec:2018
					Dec:2019	Dec:2018	
1.	<u>VEGETABLE GHEE</u>	35	1.61				
i.	VEGETABLE GHEE		1.11	M.Tons	33,760	34,612	97.5
ii.	COOKING OIL		0.50	M.Tons	17,290	16,949	102.0
2.	<u>SUGAR</u>	26	4.32				
i.	SUGAR		4.32	M.Tons	50,056	177,693	28.2
3.	<u>TEA</u>	7	1.23				
i.	TEA		1.23	M.Tons	4,275	7,840	54.5
4.	<u>BEVERAGES</u>	13	0.85				
i.	BEVERAGES		0.85	"000" NOs.	84,722	70,604	120.0
ii.	WATER*		0.85	"000" NOs.	16,373		
5.	<u>COTTON TEXTILE</u>	133	13.65				
i.	COTTON YARN		9.10	M.Tons	16,542	17,753	93.2
ii.	COTTON FABRICS		4.13	"000" Sq. M	12,200	12,944	94.3
iii.	M.M.YARN		0.42	M.Tons	487	1,405	34.7
6.	<u>LEATHER TANNING</u>	30	0.29				
i.	UPPER LEATHER		0.07	"000" Sq. M.	1,239	1,182	104.8
ii.	WET BLUE TANNED		0.22	"000" Sq. M.	108	105	102.9
7.	<u>COTTON GINNING & PRESSING</u>	85	3.30				
i.	C.G.& PRESSING		3.30	Bales	513,865	612,892	83.8
8.	<u>PAPER & PAPER BOARD</u>	6	0.01				
i.	PRINTING PAPER		0.01	M.Tons	408	339	120.4
ii.	WRITTEN PAPER		0.01	M.Tons	319	306	104.2
iii.	PACKING & OTHER PAPER		0.01	M.Tons	1,840	1,952	94.3
iv.	ADVERTISING MATERIAL*		0.01	M.Tons	30		
9.	<u>PHARMACEUTICALS</u>	78	6.37				
i.	TABLETS		1.67	"000" NOs.	2,067,290	2,090,631	98.9
ii.	LIQUIDS/SYRUPS		1.97	"000" Liters.	6,976	7,542	92.5
iii.	CAPSULES		1.36	"000" NOs.	260,826	29,780	875.8
iv.	INJECTIONS		1.22	"000" NOs.	100,721	98,230	102.5
v.	OINTMENT		0.15	KGs.	231,557	241,228	96.0
10.	<u>ACID, ALKALIES & SALT</u>	3	0.04				
i.	SULPHURIC ACID		0.04	M.Tons	2,601	2,538	102.5
11.	<u>FERTILIZER</u>	3	3.50				
i.	UREA		3.50	M.Tons	238,825	224,281	106.5
ii.	AMONIA		3.50	M.Tons	40,666	41,675	97.6
iii.	DAP*		3.50	M.Tons	72,759		
12.	<u>PAINTS & VARNISH</u>	9	0.32				
i.	PAINTS		0.32	M.Tons	124	113	109.7
ii.	VARNISH		0.32	"000" Liters.	496	506	98.0
13.	<u>SOAP</u>	38	1.66				
i.	WASHING SOAP		1.66	M.Tons	4,982	4,840	102.9
ii.	DETERGENT POWDER		1.66	M.Tons	14,663	14,840	98.8
iii.	TOILET SOAP		1.66	M.Tons	1,906	1,411	135.1
iv.	TOOTH PASTE*		1.66	M.Tons	777		
14.	<u>PETROLEUM PRODUCTS</u>	2	9.32				
i.	L.P.G		9.32	"000" Liters.	205	2,136	9.6

Sr. No.	Industrial Sector/ Items	No. of Industrial Units as per CMI 2005-06	WEIGHT (2005-06)	Unit of Quantity	Production		Index of Production in Dec:2019 with Dec:2018
					Dec:2019	Dec:2018	
ii.	NAPHTHA SOLVENT		9.32	"000" Liters.	10,356	24,740	41.9
iii.	KEROSENE OIL		9.32	"000" Liters.	260	981	26.5
iv.	H.S.D		9.32	"000" Liters.	78,313	105,175	74.5
v.	FURNACE OIL		9.32	"000" Liters.	7,339	61,765	11.9
vi.	ASPHALT 80-100		9.32	"000" Liters.	2,735	10,639	25.7
vii.	ASPHALT 60-70		9.32	"000" Liters.	-	-	
viii.	MOTOR SPRIT		9.32	"000" Liters.	406	18,782	2.2
ix.	JET FUEL		9.32	"000" Liters.	9,185	10,069	91.2
x.	LUBRICATING OIL		9.32	"000" Liters.	-		
xi.	OTHERS*		0.00	"000" Liters.	63,542		
15.	<u>TYRES & TUBES</u>	4	0.41				
i.	MOTOR TYRE		0.41	Nos.	219,482	193,129	113.6
ii.	MOTOR TUBE		0.41	Nos.	38,714	73,775	52.5
16.	<u>CEMENT</u>	11	3.86				
i.	CEMENT		3.86	M.Tons	152,204	103,655	146.8
17.	<u>M.S.PRODUCTS</u>	28	4.88				
i.	M.S PRODUCTS		4.88	M.Tons	4,493	4,199	107.0
18.	<u>SAFETY RAZOR BLADE</u>	1	0.40				
i.	SAFETY RAZOR BLAD		0.04	"000" NOs.	54,790	67,658	81.0
19.	<u>SEWING MACHINES</u>	3	0.25				
i.	SEWING MACHINES		0.25	Nos.	2,770	2,640	104.9
20.	<u>ELEC. APPLIANCES</u>	3	2.21				
i.	REFRIGERATORS		0.11	Nos.	39,959	22,937	174.2
ii.	AIR-CONDITIONERS		0.60	Nos.	2,619	15,614	16.8
iii.	DEEP FREEZERS		0.50	Nos.	290	500	58.0
iv.	WASHING MACHINES		0.50	Nos.	25,780	12,068	213.6
v.	MICROWAVE OVEN*		0.50	Nos.	32,063		
21.	<u>AUTOMOBILE</u>	17	11.15				
i.	TRUCKS		2.71	Nos.	267	456	58.6
ii.	BUSES		0.77	Nos.	55	74	74.3
iii.	LCV'S		2.50	Nos.	529	1,631	32.4
iv.	MOTOR CYCLES		2.06	Nos.	131,398	126,280	104.1
v.	TRACTORS		0.25	Nos.	774	1,710	45.3
vi.	CARS		0.50	Nos.	8,373	13,232	63.3
vii.	VANS & JEEPS*		1.18	Nos.	201		
viii.	THREE WHEELERS*		1.18	Nos.	3,780		
	Grand Total	535	69.63				

*New items are reporting from selected companies added since July (2019-20)

**Table 4: Cumulative Production of Selected Items Pertaining to Large-Scale Manufacturing Sector,
2019-20 (Jul to Dec) Vs 2018-19 (Jul to Dec)**

Sr. No.	Industrial Sector/ Items	No. of Industrial Units as per CMI 2005-06	WEIGHT (2005-06)	Unit of Quantity	Production		Index of Production in 2019-20 (Jul-Dec) with 2018-19 (Jul-Dec)
					2019-20 (Jul-Dec)	2018-19 (Jul-Dec)	
1.	<u>VEGETABLE GHEE</u>	35	1.61				
i.	VEGETABLE GHEE		1.11	M.Tons	205,910	204,010	100.9
ii.	COOKING OIL		0.50	M.Tons	90,787	93,794	96.8
2.	<u>SUGAR</u>	26	4.32				
i.	SUGAR		4.32	M.Tons	67,740	192,712	35.2
3.	<u>TEA</u>	7	1.23				
i.	TEA		1.23	M.Tons	27,481	41,395	66.4
4.	<u>BEVERAGES</u>	13	0.85				
i.	BEVERAGES		0.85	"000" NOs.	489,013	665,920	73.4
ii.	WATER*		0.85	"000" NOs.	92,168		
5.	<u>COTTON TEXTILE</u>	133	13.65				
i.	COTTON YARN		9.10	M.Tons	108,848	121,565	89.5
ii.	COTTON FABRICS		4.13	"000" Sq. M	73,166	77,663	94.2
iii.	M.M.YARN		0.42	M.Tons	6,031	15,182	39.7
6.	<u>LEATHER TANNING</u>	30	0.29				
i.	UPPER LEATHER		0.07	"000" Sq. M.	7,118	6,964	102.2
ii.	WET BLUE TANNED		0.22	"000" Sq. M.	635	598	106.2
7.	<u>COTTON GINNING & PRESSING</u>	85	3.30				
i.	C.G.& PRESSING		3.30	Bales	3,269,560	3,806,377	85.9
8.	<u>PAPER & PAPER BOARD</u>	6	0.01				
i.	PRINTING PAPER		0.01	M.Tons	2,258	1,922	117.5
ii.	WRITTEN PAPER		0.01	M.Tons	1,699	1,821	93.3
iii.	PACKING & OTHER PAPER		0.01	M.Tons	9,813	10,750	91.3
iv.	ADVERTISING MATERIAL*		0.01	M.Tons	150		
9.	<u>PHARMACEUTICALS</u>	78	6.37				
i.	TABLETS		1.67	"000" NOs.	12,166,841	12,417,525	98.0
ii.	LIQUIDS/SYRUPS		1.97	"000" Liters.	36,261	44,957	80.7
iii.	CAPSULES		1.36	"000" NOs.	1,574,583	1,293,128	121.8
iv.	INJECTIONS		1.22	"000" NOs.	508,686	499,790	101.8
v.	OINTMENT		0.15	KGs.	1,310,784	1,400,633	93.6
10.	<u>ACID, ALKALIES & SALT</u>	3	0.04				
i.	SULPHURIC ACID		0.04	M.Tons	15,939	14,664	108.7
11.	<u>FERTILIZER</u>	3	3.50				
i.	UREA		3.50	M.Tons	1,389,965	1,319,766	105.3
ii.	AMONIA		3.50	M.Tons	419,925	266,689	157.5
iii.	DAP*		3.50	M.Tons	444,637		
12.	<u>PAINTS & VARNISH</u>	9	0.32				
i.	PAINTS		0.32	M.Tons	738	680	108.5
ii.	VARNISH		0.32	"000" Liters.	2,689	3,115	86.3
13.	<u>SOAP</u>	38	1.66				
i.	WASHING SOAP		1.66	M.Tons	28,258	25,975	108.8
ii.	DETERGENT POWDER		1.66	M.Tons	85,594	83,995	101.9
iii.	TOILET SOAP		1.66	M.Tons	11,156	14,211	78.5
iv.	TOOTH PASTE*		1.66	M.Tons	4,380		
14.	<u>PETROLEUM PRODUCTS</u>	2	9.32				
i.	L.P.G		9.32	"000" Liters.	11,671	14,662	79.6

Sr. No.	Industrial Sector/ Items	No. of Industrial Units as per CMI 2005-06	WEIGHT (2005-06)	Unit of Quantity	Production		Index of Production in 2019-20 (Jul-Dec) with 2018-19 (Jul-Dec)
					2019-20 (Jul-Dec)	2018-19 (Jul-Dec)	
ii.	NAPHTHA SOLVENT		9.32	"000" Liters.	160,535	146,986	109.2
iii.	KEROSENE OIL		9.32	"000" Liters.	3,869	3,155	122.6
iv.	H.S.D		9.32	"000" Liters.	691,389	712,835	97.0
v.	FURNACE OIL		9.32	"000" Liters.	383,901	416,893	92.1
vi.	ASPHALT 80-100		9.32	"000" Liters.	73,183	36,638	199.7
vii.	ASPHALT 60-70		9.32	"000" Liters.	10,452	25,353	41.2
viii.	MOTOR SPRIT		9.32	"000" Liters.	87,302	171,352	50.9
ix.	JET FUEL		9.32	"000" Liters.	78,117	88,484	88.3
x.	LUBRICATING OIL		9.32	"000" Liters.	7,650	49,842	15.3
xi.	OTHERS*		0.00	"000" Liters.	219,972	1,186	
15.	<u>TYRES & TUBES</u>	4	0.41				
i.	MOTOR TYRE		0.41	Nos.	1,282,741	1,367,700	93.8
ii.	MOTOR TUBE		0.41	Nos.	288,608	287,254	100.5
16.	<u>CEMENT</u>	11	3.86				
i.	CEMENT		3.86	M.Tons	768,003	676,989	113.4
17.	<u>M.S.PRODUCTS</u>	28	4.88				
i.	M.S PRODUCTS		4.88	M.Tons	25,825	20,959	123.2
18.	<u>SAFETY RAZOR BLADE</u>	1	0.40				
i.	SAFETY RAZOR BLAD		0.04	"000" NOs.	391,112	403,201	97.0
19.	<u>SEWING MACHINES</u>	3	0.25				
i.	SEWING MACHINES		0.25	Nos.	17,840	15,626	114.2
20.	<u>ELEC. APPLIANCES</u>	3	2.21				
i.	REFRIGERATORS		0.11	Nos.	266,707	242,922	109.8
ii.	AIR-CONDITIONERS		0.60	Nos.	17,550	64,143	27.4
iii.	DEEP FREEZERS		0.50	Nos.	4,799	7,804	61.5
iv.	WASHING MACHINES		0.50	Nos.	141,368	92,249	153.2
v.	MICROWAVE OVEN*		0.50	Nos.	173,524		
21.	<u>AUTOMOBILE</u>	17	11.15				
i.	TRUCKS		2.71	Nos.	1,729	3,751	46.1
ii.	BUSES		0.77	Nos.	326	515	63.3
iii.	LCV'S		2.50	Nos.	7,797	12,587	61.9
iv.	MOTOR CYCLES		2.06	Nos.	718,810	885,260	81.2
v.	TRACTORS		0.25	Nos.	16,661	25,969	64.2
vi.	CARS		0.50	Nos.	60,862	112,494	54.1
vii.	VANS & JEEPS*		1.18	Nos.	2,094		
viii.	THREE WHEELERS*		1.18	Nos.	20,297		
Grand Total		535	69.63				

*New items are reporting from selected companies added since July (2019-20)

Table 5: Employment in Selected Large-Scale Manufacturing Sector, December-2019 Vs November-2019

Sr. No.	Industrial Sector/ Items	No. of Industrial Units as per CMI 2005-06	Total Employees		Production Worker	
			Dec:2019	Nov:2019	Dec:2019	Nov:2019
1	<u>VEGETABLE GHEE</u>	35	2,243	2,243	1,610	1,626
2	<u>SUGAR</u>	26	8,914	8,610	5,709	5,335
3	<u>TEA</u>	7	3,127	3,213	2,662	2,662
4	<u>BEVERAGES</u>	13	3,493	2,652	1,475	760
5	<u>COTTON TEXTILE</u>	133	54,460	55,888	42,316	42,605
6	<u>LEATHER TANNING</u>	30	6,424	6,569	5,496	5,496
7	<u>PAPER & PAPER BOARD</u>	6	2,266	2,254	1,622	1,652
8	<u>PHARMACEUTICALS</u>	78	6,231	6,143	3,666	3,681
9	<u>ACID, ALKALIES & SALT</u>	3	34	34	22	22
10	<u>FERTILIZER</u>	3	948	966	783	801
11	<u>PAINTS & VARNISH</u>	9	106	106	57	57
12	<u>SOAP</u>	38	2,750	2,750	2,417	2,417
13	<u>PETROLEUM PRODUCTS</u>	2	433	429	336	337
14	<u>TYRES & TUBES</u>	4	5,820	5,888	4,100	4,140
15	<u>CEMENT</u>	11	4,507	4,436	2,006	1,890
16	<u>STEEL PRODUCTS</u>	1	9,149	9,474	6,191	6,394
17	<u>M.S PRODUCTS</u>	28	827	827	670	670
18	<u>SAFETY RAZOR BLAD</u>	1	288	288	253	253
19	<u>SEWING MACHINES</u>	3	416	416	360	360
20	<u>ELEC. APPLIANCES</u>	3	750	750	663	663
21	<u>AUTOMOBILE</u>	17	14,869	15,095	6,825	6,883
22	<u>STORAGE BATTERIES</u>	4	2,113	2,112	1,647	1,648
	Grand Total	455	130,169	131,143	90,886	90,352

Table 6: Employment in Selected Large-Scale Manufacturing Sector, December-2019 Vs December-2018

Sr. No.	Industrial Sector/ Items	No. of Industrial Units as per CMI 2005-06	Employees		Production Worker	
			Dec:2019	Dec:2018	Dec:2019	Dec:2018
1	<u>VEGETABLE GHEE</u>	35	2,243	2,534	1,610	1,873
2	<u>SUGAR</u>	26	8,914	9,569	5,709	6,170
3	<u>TEA</u>	7	3,127	143	2,662	100
4	<u>BEVERAGES</u>	13	3,493	4,117	1,475	1,967
5	<u>COTTON TEXTILE</u>	133	54,460	57,251	42,316	43,791
6	<u>LEATHER TANNING</u>	30	6,424	5,819	5,496	4,958
7	<u>PAPER & PAPER BOARD</u>	6	2,266	508	1,622	486
8	<u>PHARMACEUTICALS</u>	78	6,231	9,141	3,666	5,947
9	<u>ACID, ALKALIES & SALT</u>	3	34	34	22	22
10	<u>FERTILIZER</u>	3	948	336	783	247
11	<u>PAINTS & VARNISH</u>	9	106	103	57	50
12	<u>SOAP</u>	38	2,750	3,835	2,417	3,471
13	<u>PETROLEUM PRODUCTS</u>	2	433	427	336	354
14	<u>TYRES & TUBES</u>	4	5,820	6,168	4,100	4,280
15	<u>CEMENT</u>	11	4,507	5,158	2,006	2,195
16	<u>STEEL PRODUCTS</u>	1	9,149	10,255	6,191	7,107
17	<u>M.S PRODUCTS</u>	28	827	827	670	670
18	<u>SAFETY RAZOR BLAD</u>	1	288	287	253	258
19	<u>SEWING MACHINES</u>	3	416	141	360	103
20	<u>ELECTRICAL APPARATUS</u>	3	750	750	663	663
21	<u>AUTOMOBILE</u>	17	14,869	3,493	6,825	2,717
22	<u>STORAGE BATTERIES</u>	4	2,113	2,130	1,647	1,395
	Grand Total	455	130,169	123,025	90,886	88,824

**Table 7: Average Monthly Employment in Selected Large Scale Manufacturing Sector,
2019-20 (Jul to Dec) Vs 2018-19 (Jul to Dec)**

Sr. No.	Industrial Sector/ Items	No. of Industrial Units as per CMI 2005-06	Average Monthly Total Employment		Average Monthly Production Worker	
			(Jul-Dec) 2019-20	(Jul-Dec) 2018-19	(Jul-Dec) 2019-20	(Jul-Dec) 2018-19
1	<u>VEGETABLE GHEE</u>	35	2,223	2,491	1,630	1,876
2	<u>SUGAR</u>	26	8,534	8,958	5,287	5,738
3	<u>TEA</u>	7	3,115	143	1,873	100
4	<u>BEVERAGES</u>	13	2,776	4,122	943	1,958
5	<u>COTTON TEXTILE</u>	133	54,825	57,238	42,777	43,791
6	<u>LEATHER TANNING</u>	30	6,639	5,835	5,573	4,949
7	<u>PAPER & PAPER BOARD</u>	6	2,257	554	1,644	486
8	<u>PHARMACEUTICALS</u>	78	6,191	9,592	3,347	6,267
9	<u>ACID, ALKALIES & SALT</u>	3	34	34	22	22
10	<u>FERTILIZER</u>	3	963	344	797	254
11	<u>PAINTS & VARNISH</u>	9	106	106	57	53
12	<u>SOAP</u>	38	2,750	3,447	2,417	3,080
13	<u>PETROLEUM PRODUCTS</u>	2	433	420	341	347
14	<u>TYRES & TUBES</u>	4	5,908	6,151	4,149	4,275
15	<u>CEMENT</u>	11	4,661	5,195	1,973	2,190
16	<u>STEEL PRODUCTS</u>	1	9,392	10,388	6,370	7,245
17	<u>M.S PRODUCTS</u>	28	827	996	670	823
18	<u>SAFETY RAZOR BLAD</u>	1	288	288	255	259
19	<u>SEWING MACHINES</u>	3	416	148	360	108
20	<u>ELECTRICAL APPARATUS</u>	3	750	750	663	663
21	<u>AUTOMOBILE</u>	17	15,057	3,430	6,893	2,664
22	<u>STORAGE BATTERIES</u>	4	2,129	2,059	1,654	1,287
	Grand Total	455	130,275	122,687	89,695	88,436

Annexure – A Proforma/ Questionnaire



**GOVERNMENT OF SINDH
PLANNING & DEVELOPMENT DEPARTMENT
BUREAU OF STATISTICS**

www.sindhbos.gov.pk

Street-13, Block-8, Kehkashan Clifton, Karachi-75600, P.O.Box# 3879

☎ 021-99251259 🖨 021-35296415 ✉ m.kazimjafri@hotmail.com

The information supplied will be kept strictly confidential and will be used for statistical purpose only.	REPORT FOR	
	MONTH	YEAR

MONTHLY SURVEY OF INDUSTRIAL PRODUCTION AND EMPLOYMENT IN SINDH.

INDUSTRY CODE

Estb: Code

LOCATION CODE

PART-I GENERAL PARTICULARS

- i) Name and Address of the Establishment _____
- ii) Name, Designation, Telephone, Cell and _____
- Fax# of the person to be contacted. _____
- iii) Website and E-mail Address _____

PART-II PRODUCTION DATA

S.No	Major Items of Production	Code	Unit of Quantity	Code	Previous Month	Current Month	Reasons of Growth/ Decline

PART-III WORKING DAYS AND EMPLOYMENT

- i) No. of days establishment worked _____
- ii) No. of Production workers. Male _____ Female _____ Total _____
- iii) No. of Non production workers Male _____ Female _____ Total _____
- TOTAL (ii + iii)** Male _____ Female _____ Total _____

Note: Production Workers mean those who are directly associated with production. It includes those engaged in manufacturing, assembling packing repairing etc. Working Supervisor should also be included, Non production worker mean those who are not directly associated with production it includes Administrative Clerical and Services Staff like Chowkidar, Driver and Sweeper.

Signature _____
Designation _____
Date _____

Annexure – B Important Definitions

Large Scale Manufacturing Industries

Establishments where 10 or more employees are working are called large Scale Manufacturing Industries.

Employees

Employees mean all persons whether part time or full time who work in the establishments and receive remuneration in cash or in kind. Working proprietors, unpaid family workers and home workers are excluded from the category of employee. There are two types of employees Production Workers and Non-Production Workers.

- **Production Workers**

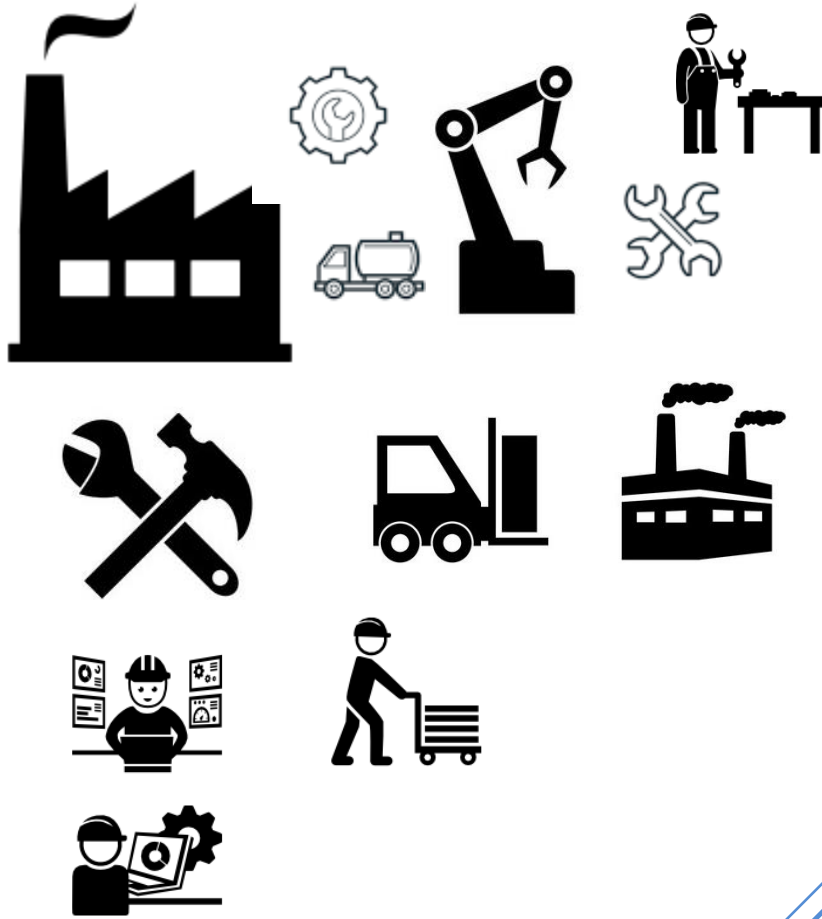
Are engaged in work directly associated with production like manufacturing, assembling, packing, repairing etc. Working supervisors and persons engaged for repairs and maintenance are also included.

- **Non-Production Workers**

Include administrative and professional employees, white-collar office employees, drivers, watchmen/guards, peons, sweepers, office boys, etc.

Annexure – C Data Users

- Ministry of Industries & Production, Government of Pakistan.
- Planning & Development Department, Government of Sindh.
- Pakistan Bureau of Statistics, Government of Pakistan.
- State Bank of Pakistan.
- Provincial Bureaus of Statistics, Punjab, KPK and Baluchistan.
- Research & Training Wing, Planning & Development Department, Government of Sindh.



(Industries Section)
Bureau of Statistics
Planning & Development
Department
Government of Sindh
m.kazimjafri@hotmail.com

ST:13 Block-8 Kehkashan Clifton, Ch. Kahliqz-zaman road, Karachi
Ph. 021-99251259, Email: ddindustries.sindhbos@gmail.com
www.sindhbos.gov.pk