

MONTHLY SURVEY OF INDUSTRIAL PRODUCTION & EMPLOYMENT IN SINDH

April, 2020

Industries Section, BOS



**BUREAU OF STATISTICS
PLANNING & DEVELOPMENT DEPARTMENT
GOVERNMENT OF SINDH**

FOR OFFICIAL USE ONLY

Sindh Monthly Survey of Industrial Production & Employment (MIPE)

April, 2020



Bureau of Statistics
Planning & Development Department
Government of Sindh

www.sindhbos.gov.pk
ddindustries.sindhbos.gov.pk

ST:13 Block-8 Kehkashan Clifton, Ch. Kahliquz-zaman road, Karachi Ph. 021-99251259

Preface

Monthly Survey of Industrial Production and Employment (MIPE) is being conducted/ published by Sindh Bureau of Statistics on regular basis since 1970s. This report provides important statistics in respect of industrial production & employment of large Scale Manufacturing (LSM) industries in Sindh.

This report contains information on 61 items manufactured in 22 selected large scale industrial sectors covering 535 industrial establishments (selection on the basis of CMI 2005-06). These industries account for 69.6% of total value added of large scale manufacturing sector in Sindh.

MIPE Report provides information regarding General Index and Quantum Index of Manufacturing (QIM) to base period 2005-06, and analytical analysis on the current status of production and employment in manufacturing sector.

All the efforts are made to improve the industrial statistics and hope this report would prove useful to policy makers, planners, researchers and other data users. Suggestion/ recommendations from the users will always be welcomed and appreciated.

Director General
Bureau of Statistics
Planning & Development Department
Government of Sindh

Contents

PREFACE	2
CONTENTS	3
LIST OF TABLES	4
LIST OF FIGURES	4
LIST OF EQUATIONS	4
MIPE TEAM (INDUSTRIES SECTION)	5
1. INTRODUCTION	6
2. QUESTIONNAIRE/ PROFORMA	7
3. METHODOLOGY	7
4. EDITING	7
5. QUANTUM INDEX OF MANUFACTURING (QIM)	8
6. REPORT ANALYSIS	9
7. DATA TABLES	11
ANNEXURE – A: PROFORMA/ QUESTIONNAIRE	20
ANNEXURE – B: IMPORTANT DEFINITIONS	21
ANNEXURE – C: DATA USERS	22

List of Tables

TABLE 1: SERIES OF QUANTUM INDEX OF MANUFACTURING (QIM) AT (2005-06=100)	9
TABLE 2: PRODUCTION OF SELECTED ITEMS PERTAINING TO LARGE-SCALE MANUFACTURING SECTOR, APRIL-2020 Vs MARCH-2020	11
TABLE 3: PRODUCTION OF SELECTED ITEMS PERTAINING TO LARGE-SCALE MANUFACTURING SECTOR, APRIL-2020 Vs APRIL-2019 ..	13
TABLE 4: CUMULATIVE PRODUCTION OF SELECTED ITEMS PERTAINING TO LARGE-SCALE MANUFACTURING SECTOR,	15
TABLE 5: EMPLOYMENT IN SELECTED LARGE-SCALE MANUFACTURING SECTOR, APRIL-2020 Vs MARCH-2020	17
TABLE 6: EMPLOYMENT IN SELECTED LARGE-SCALE MANUFACTURING SECTOR, APRIL-2020 Vs APRIL-2019	18
TABLE 7: AVERAGE MONTHLY EMPLOYMENT IN SELECTED LARGE SCALE MANUFACTURING SECTOR,	19

List of Figures

FIGURE 1: TREND OF QUANTUM INDEX OF LARGE SCALE MANUFACTURING INDUSTRIES AT BASE YEAR 2005-06	10
FIGURE 2: TREND OF AVERAGE MONTHLY EMPLOYMENT IN LARGE SCALE MANUFACTURING INDUSTRIES	10

List of Equations

EQUATION 1 LASPAYER'S INDEX	8
-----------------------------------	---

Team Lead:

Muhammad Kazim Jafri | Deputy Director

Team Members:

Ms. Rukhsana Aziz | Statistical Officer

Ms. FaaezaAtiq | Statistical Officer

Support in Data Collection and Compilation:

Mr. Muhammad YounusBukhari | Jr. Stenographer

Mr. Muhammad AkramBhatti | Statistical Computer

1. Introduction

Industrial Statistical is very essential tool to track industrial growth and implementation of policies in right directions. This sector has great importance for economic development of country. The composition of Pakistan's economy, Agriculture Sector is 20%, Industries Sector is 21% and Services Sector is 59% (PBS).

From the share of industrial sector 13.6% are manufacturing and more specifically 11% is Large Scale Manufacturing (LSM) Sector. The role of Sindh province in the Large Scale Manufacturing is very vital. According to Karachi Chamber of Commerce and Industry (KCCI), Karachi is the largest metropolitan city of Pakistan and produces 15% with an annual Gross Domestic Product (GDP). From Sindh Business Register (SBR) of Manufacturing Industries recently developed by Sindh Bureau of Statistics, Planning & Development Department around 67% establishments/factories are located in Karachi and 33% are in other districts to Sindh.

It is historical fact that countries with strong industrial sector have showed more economic growth and development industrial sector have shown improvement in national income and promoted living standard of population. A fresh industrial policy of Pakistan is also promotes employment, value-added exports and import substitution

For the timely and quality industrial statistics Bureau of Statistics, Sindh Planning & Development Department conducts Monthly Survey of Industrial Production and Employment (MIPE). This survey collects information on 61 items manufactured in 22 selected large scale Industrial sectors from 535 establishments/ factories in Sindh. The sample of 535 establishments / factories was drawn from the last Census of Manufacturing Industries (CMI), 2005-06. These industries account for 69.6% of total value added in terms of production during 2005-06, Census of Manufacturing Industries. In addition to collection, compilation, tabulation and processing of manufacturing data, Bureau of Statistics also computes monthly Quantum Index of Manufacturing by using the weights of production. The quantum index is an essential indicator to gauge to aggregate monthly production of province.

2. Questionnaire/ Proforma

A questionnaire/ Proforma is a research instrument consisting of a series of questions and other prompts for the purpose of gathering information from respondents. A pre-tested questionnaire is used for the data collection of industrial inputs related to employment and production, attached at **Annex-A**.

3. Methodology

The basic method of data collection for Sindh MIPE is the posting/ mailing of MIPE Questionnaires. More than 70% monthly returns are received to this Bureau through mail from industrial units. The non-responding or remaining establishments are visited by the officers/ officials of this Bureau, besides this the method of emailing, fax and telephonic approach are also used for collection of monthly returns and increase the response rate.

4. Editing

All the received returns are scrutinized for accuracy and consistency with previous data by the Industries Section of this Bureau. As per *Unit Calculation Sheet* different units of similar products are converted into the reporting units. In case of huge discrepancy between current and previous returns the factory management is approached to rectify that figures. In the absence establishment's return or non-availability of concerned person the average production of last month or the last month information is repeated for equivalence.

5. Quantum Index of Manufacturing (QIM)

A quantum index is an index based on quantity units of goods such as number or weight. Sindh bureau of Statistics is computing Index on Industrial Production using 2005-06 as base year. Index Series is generated by using Laspayer's Index.

$$QIM = \frac{\sum_{i=1}^n \frac{q_{im}}{q_{i0}} w_i}{\sum_{i=1}^n w_i} \times 100$$

Equation 1 Laspayer's Index

q_{im} = Production of i^{th} item during the current month

q_{i0} = Average Production of the same i^{th} item in the base period (2005-06)

w_i = Weight of the i^{th} item in the base period (2005-06)

$\sum_{i=1}^n w_i$ = Total Weight of 22 large scale industrial sectors covering 535 establishments in the base period with respect to the total value added of all the industries covered in CMI in the base year 2005-06.

6. Report Analysis

Summary findings on the basis of Index of Industrial Production are as follows:

- Overall Production in April, 2020 is sharply decreased by 33.3% as compared to last month(i.e. March, 2020)
- Overall Production in April 2020 is followed almost same pattern (i.e. 33.4%) like previous month (i.e. March, 2020) with the corresponding month of last year (i.e. April, 2019)
- Cumulative production from July to April(2019-20) is slightly decreased 1.69% as the cumulative production from July to April (2018-19)
- Employment during April, 2020 is significantly decreased by 12.5% as compared to previous month (i.e. March, 2020)
- Employment during April, 2020 is decreased by 4.3% than April, 2019.
- Average monthly employment during the period of July-April (2019-20) is 6.3% increased as compared to the corresponding period of July- April (2018-19)

Table 1: Series of Quantum Index of Manufacturing (QIM) at (2005-06=100)

Month/ Year	2015-16	2016-17	2017-18	2018-19	2019-20
July	255.7	284.0	327.0	290.8	259.7
August	266.0	287.7	336.4	265.5	220.9
September	274.2	281.5	330.9	311.3	266.7
October	247.0	291.4	355.7	287.0	277.0
November	283.7	317.1	343.2	273.3	280.3
December	261.7	302.8	341.5	265.2	223.7
January	297.4	286.1	374.0	321.3	263.8
February	293.2	283.3	324.5	309.0	313.2
March	253.9	275.6	341.4	279.7	258.2
April	250.6	276.8	338.5	258.2	172.1
May	254.4	283.9	311.3	248.2	
June	259.0	258.1	307.4	257.6	
Average (Geometric Mean)	265.9	285.4	335.5	279.7	

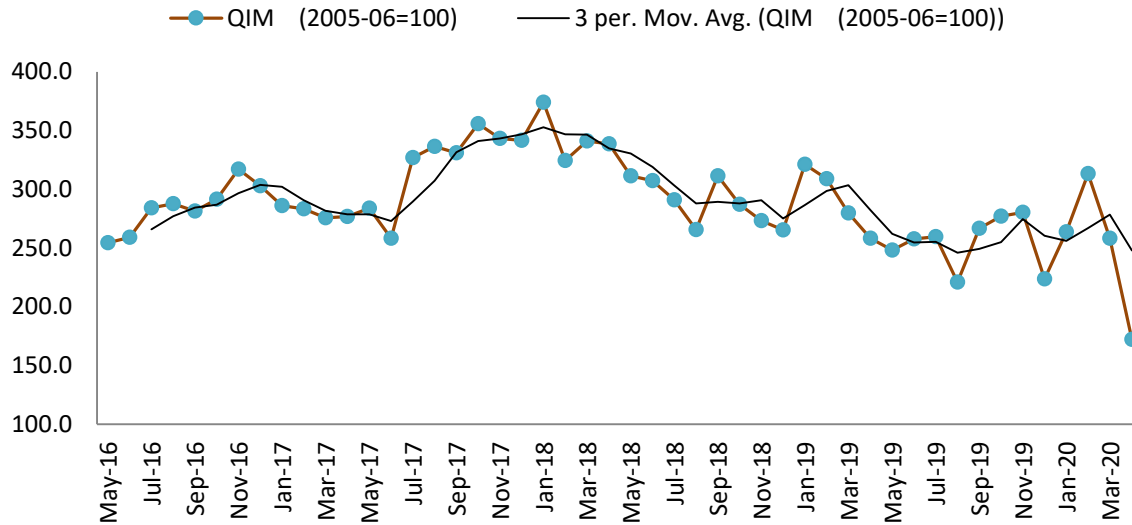


Figure 1: Trend of Quantum Index of Large Scale Manufacturing Industries at base year 2005-06

During the current month seasonal decline has been observed in Sugar and Cotton ginning sector. Quantum index of Large Manufacturing Industries reported lowest in last five years. Sectors Paints & Varnish, Petroleum, Motor Tyres & Tubes, Electrical Appliance and Automobile sectors are effected badly due to (COVID-19).

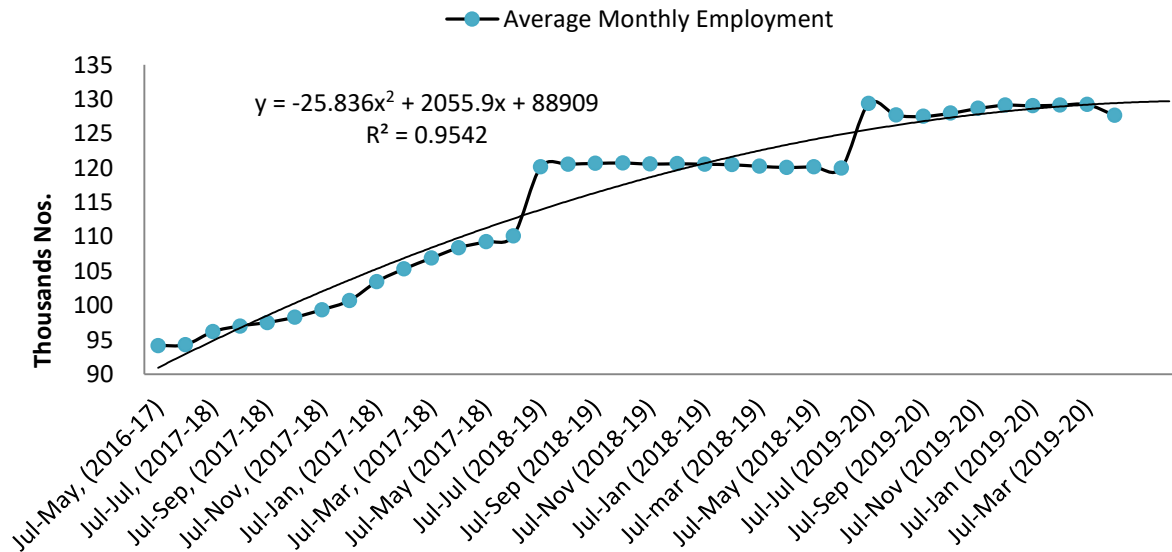


Figure 2: Trend of Average Monthly Employment in Large Scale Manufacturing Industries

The employment curve of Large Scale Manufacturing industries is declined from previous months. Due to COVID-19, most of the factories were completely closed in many sectors. In current circumstances, decreasing trend in employment may be observed in future as well. The fitted quadratic model with $R^2 = 95\%$ is also predicting slight decline in LSM Employment in coming month.

7. Data Tables

Table 2: Production of Selected Items Pertaining to Large-Scale Manufacturing Sector, April-2020 Vs March-2020

Sr. No.	Industrial Sector/ Items	No. of Industrial Units as per CMI 2005-06	WEIGHT (2005-06)	Unit of Quantity	Production		Index of Production in April:2020 with Mar: 2020
					April:2020	Mar:2020	
1.	VEGETABLE GHEE	35	1.61				
i.	VEGETABLE GHEE		1.11	M.Tons	36,009	33,827	106.5
ii.	COOKING OIL		0.50	M.Tons	16,761	17,619	95.1
2.	SUGAR	26	4.32				
i.	SUGAR		4.32	M.Tons	5,287	92,789	5.7
3.	TEA	7	1.23				
i.	TEA		1.23	M.Tons	3,881	5,128	75.7
4.	BEVERAGES	13	0.85				
i.	BEVERAGES		0.85	"000" NOs.	106,473	102,777	103.6
ii.	WATER*		0.85	"000" NOs.	15,680	14,196	110.5
5.	COTTON TEXTILE	133	13.65				
i.	COTTON YARN		9.10	M.Tons	14,367	16,464	87.3
ii.	COTTON FABRICS		4.13	"000" Sq. M	10,207	11,753	86.8
iii.	M.M.YARN		0.42	M.Tons	338	594	56.9
6.	LEATHER TANNING	30	0.29				
i.	UPPER LEATHER		0.07	"000" Sq. M.	-	685	0.0
ii.	WET BLUE TANNED		0.22	"000" Sq. M.	-	71	0.0
7.	COTTON GINNING & PRESSING	85	3.30				
i.	C.G.& PRESSING		3.30	Bales	-	586	0.0
8.	PAPER & PAPER BOARD	6	0.01				
i.	PRINTING PAPER		0.01	M.Tons	377	314	120.1
ii.	WRITTEN PAPER		0.01	M.Tons	103	274	37.6
iii.	PACKING & OTHER PAPER		0.01	M.Tons	1,233	1,517	81.3
iv.	ADVERTISING MATERIAL*		0.01	M.Tons	21	23	91.3
9.	PHARMACEUTICALS	78	6.37				
i.	TABLETS		1.67	"000" NOs.	2,120,223	2,130,146	99.5
ii.	LIQUIDS/SYRUPS		1.97	"000" Liters.	7,515	7,414	101.4
iii.	CAPSULES		1.36	"000" NOs.	329,814	305,265	108.0
iv.	INJECTIONS		1.22	"000" NOs.	115,236	112,547	102.4
v.	OINTMENT		0.15	KGs.	238,811	233,071	102.5
10.	ACID, ALKALIES & SALT	3	0.04				
i.	SULPHURIC ACID		0.04	M.Tons	1,124	1,536	73.2
11.	FERTILIZER	3	3.50				
i.	UREA		3.50	M.Tons	238,958	240,856	99.2
ii.	AMONIA		3.50	M.Tons	45,592	42,444	107.4
iii.	DAP*		3.50	M.Tons	41,356	38,223	108.2
12.	PAINTS & VARNISH	9	0.32				
i.	PAINTS		0.32	M.Tons	-	39	0.0
ii.	VARNISH		0.32	"000" Liters.	-	171	0.0

Sr. No.	Industrial Sector/ Items	No. of Industrial Units as per CMI 2005-06	WEIGHT (2005-06)	Unit of Quantity	Production		Index of Production in April:2020 with Mar: 2020
					April:2020	Mar:2020	
13.	SOAP	38	1.66				
i.	WASHING SOAP		1.66	M.Tons	6,485	5,393	120.2
ii.	DETERGENT POWDER		1.66	M.Tons	14,464	14,905	97.0
iii.	TOILET SOAP		1.66	M.Tons	1,978	1,979	99.9
iv.	TOOTH PASTE*		1.66	M.Tons	940	849	110.7
14.	PETROLEUM PRODUCTS	2	9.32				
i.	L.P.G		9.32	"000" Liters.	2,286	2,710	84.3
ii.	NAPHTHA SOLVENT		9.32	"000" Liters.	888	11,943	7.4
iii.	KEROSENE OIL		9.32	"000" Liters.	-	2,704	0.0
iv.	H.S.D		9.32	"000" Liters.	90,971	106,508	85.4
v.	FURNACE OIL		9.32	"000" Liters.	24,637	48,113	51.2
vi.	ASPHALT 80-100		9.32	"000" Liters.	-	-	
vii.	ASPHALT 60-70		9.32	"000" Liters.	6,612	9,125	72.5
viii.	MOTOR SPRIT		9.32	"000" Liters.	21,275	21,190	100.4
ix.	JET FUEL		9.32	"000" Liters.	4,378	19,721	22.2
x.	LUBRICATING OIL		9.32	"000" Liters.	10,024	12,464	80.4
xi.	OTHERS*		0.00	"000" Liters.	16,490	22,382	73.7
15.	TYRES & TUBES	4	0.41				
i.	MOTOR TYRE		0.41	Nos.	-	167,858	0.0
ii.	MOTOR TUBE		0.41	Nos.	-	30,001	0.0
16.	CEMENT	11	3.86				
i.	CEMENT		3.86	M.Tons	196,440	157,133	125.0
17.	M.S.PRODUCTS	28	4.88				
i.	M.S PRODUCTS		4.88	M.Tons	3,987	4,431	90.0
18.	SAFETY RAZOR BLADE	1	0.40				
i.	SAFETY RAZOR BLAD		0.04	"000" NOs.	-	56,257	0.0
19.	SEWING MACHINES	3	0.25				
i.	SEWING MACHINES		0.25	Nos.	-	1,642	0.0
20.	ELEC. APPLIANCES	3	2.21				
i.	REFRIGERATORS		0.11	Nos.	-	35,460	0.0
ii.	AIR-CONDITIONERS		0.60	Nos.	-	7,633	0.0
iii.	DEEP FREEZERS		0.50	Nos.	-	453	0.0
iv.	WASHING MACHINES		0.50	Nos.	-	8,114	0.0
v.	MICROWAVE OVEN*		0.50	Nos.	-	15,582	0.0
21.	AUTOMOBILE	17	11.15				
i.	TRUCKS		2.71	Nos.	-	307	0.0
ii.	BUSES		0.77	Nos.	-	32	0.0
iii.	LCV'S		2.50	Nos.	-	1,075	0.0
iv.	MOTOR CYCLES		2.06	Nos.	-	95,552	0.0
v.	TRACTORS		0.25	Nos.	1,742	2,858	61.0
vi.	CARS		0.50	Nos.	-	6,432	0.0
vii.	VANS & JEEPS*		1.18	Nos.	-	337	0.0
viii.	THREE WHEELERS*		1.18	Nos.	-	3,722	0.0
Grand Total		535	69.63				

*New items are reporting from selected companies added since July (2019-20)

Table 3: Production of Selected Items Pertaining to Large-Scale Manufacturing Sector, April-2020 Vs April-2019

Sr. No.	Industrial Sector/ Items	No. of Industrial Units as per CMI 2005-06	WEIGHT (2005-06)	Unit of Quantity	Production		Index of Production in April:2020 with April:2019
					April:2020	April:2019	
1.	VEGETABLE GHEE	35	1.61				
i.	VEGETABLE GHEE		1.11	M.Tons	36,009	34,952	103.0
ii.	COOKING OIL		0.50	M.Tons	16,761	16,179	103.6
2.	SUGAR	26	4.32				
i.	SUGAR		4.32	M.Tons	5,287	13,619	38.8
3.	TEA	7	1.23				
i.	TEA		1.23	M.Tons	3,881	4,028	96.4
4.	BEVERAGES	13	0.85				
i.	BEVERAGES		0.85	"000" NOs.	106,473	91,044	116.9
ii.	WATER*		0.85	"000" NOs.	15,680		
5.	COTTON TEXTILE	133	13.65				
i.	COTTON YARN		9.10	M.Tons	14,367	25,145	57.1
ii.	COTTON FABRICS		4.13	"000" Sq. M	10,207	12,223	83.5
iii.	M.M.YARN		0.42	M.Tons	338	1,555	21.7
6.	LEATHER TANNING	30	0.29				
i.	UPPER LEATHER		0.07	"000" Sq. M.	-	1,334	0.0
ii.	WET BLUE TANNED		0.22	"000" Sq. M.	-	114	0.0
7.	COTTON GINNING & PRESSING	85	3.30				
i.	C.G.& PRESSING		3.30	Bales	-	-	
8.	PAPER & PAPER BOARD	6	0.01				
i.	PRINTING PAPER		0.01	M.Tons	377	228	165.4
ii.	WRITTEN PAPER		0.01	M.Tons	103	297	34.7
iii.	PACKING & OTHER PAPER		0.01	M.Tons	1,233	1,561	79.0
iv.	ADVERTISING MATERIAL*		0.01	M.Tons	21		
9.	PHARMACEUTICALS	78	6.37				
i.	TABLETS		1.67	"000" NOs.	2,120,223	2,249,273	94.3
ii.	LIQUIDS/SYRUPS		1.97	"000" Liters.	7,515	7,735	97.2
iii.	CAPSULES		1.36	"000" NOs.	329,814	347,726	94.8
iv.	INJECTIONS		1.22	"000" NOs.	115,236	129,868	88.7
v.	OINTMENT		0.15	KGs.	238,811	238,656	100.1
10.	ACID, ALKALIES & SALT	3	0.04				
i.	SULPHURIC ACID		0.04	M.Tons	1,124	2,576	43.6
11.	FERTILIZER	3	3.50				
i.	UREA		3.50	M.Tons	238,958	198,174	120.6
ii.	AMONIA		3.50	M.Tons	45,592	47,685	95.6
iii.	DAP*		3.50	M.Tons	41,356		
12.	PAINTS & VARNISH	9	0.32				
i.	PAINTS		0.32	M.Tons	-	117	0.0
ii.	VARNISH		0.32	"000" Liters.	-	474	0.0

Sr. No.	Industrial Sector/ Items	No. of Industrial Units as per CMI 2005-06	WEIGHT (2005-06)	Unit of Quantity	Production		Index of Production in April:2020 with April:2019
					April:2020	April:2019	
13.	SOAP	38	1.66				
i.	WASHING SOAP		1.66	M.Tons	6,485	4,246	152.7
ii.	DETERGENT POWDER		1.66	M.Tons	14,464	14,388	100.5
iii.	TOILET SOAP		1.66	M.Tons	1,978	1,616	122.4
iv.	TOOTH PASTE*		1.66	M.Tons	940		
14.	PETROLEUM PRODUCTS	2	9.32				
i.	L.P.G		9.32	"000" Liters.	2,286	2,614	87.4
ii.	NAPHTHA SOLVENT		9.32	"000" Liters.	888	36,679	2.4
iii.	KEROSENE OIL		9.32	"000" Liters.	-	1,587	0.0
iv.	H.S.D		9.32	"000" Liters.	90,971	151,292	60.1
v.	FURNACE OIL		9.32	"000" Liters.	24,637	82,356	29.9
vi.	ASPHALT 80-100		9.32	"000" Liters.	-	6,545	0.0
vii.	ASPHALT 60-70		9.32	"000" Liters.	6,612	-	
viii.	MOTOR SPRIT		9.32	"000" Liters.	21,275	20,627	103.1
ix.	JET FUEL		9.32	"000" Liters.	4,378	9,378	46.7
x.	LUBRICATING OIL		9.32	"000" Liters.	10,024	-	
xi.	OTHERS*		0.00	"000" Liters.	16,490	-	
15.	TYRES & TUBES	4	0.41				
i.	MOTOR TYRE		0.41	Nos.	-	228,619	0.0
ii.	MOTOR TUBE		0.41	Nos.	-	65,091	0.0
16.	CEMENT	11	3.86				
i.	CEMENT		3.86	M.Tons	196,440	150,491	130.5
17.	M.S.PRODUCTS	28	4.88				
i.	M.S PRODUCTS		4.88	M.Tons	3,987	3,834	104.0
18.	SAFETY RAZOR BLADE	1	0.40				
i.	SAFETY RAZOR BLAD		0.04	"000" NOs.	-	69,873	0.0
19.	SEWING MACHINES	3	0.25				
i.	SEWING MACHINES		0.25	Nos.	-	3,050	0.0
20.	ELEC. APPLIANCES	3	2.21				
i.	REFRIGERATORS		0.11	Nos.	-	54,021	0.0
ii.	AIR-CONDITIONERS		0.60	Nos.	-	12,801	0.0
iii.	DEEP FREEZERS		0.50	Nos.	-	1,464	0.0
iv.	WASHING MACHINES		0.50	Nos.	-	13,425	0.0
v.	MICROWAVE OVEN*		0.50	Nos.	-		
21.	AUTOMOBILE	17	11.15				
i.	TRUCKS		2.71	Nos.	-	391	0.0
ii.	BUSES		0.77	Nos.	-	86	0.0
iii.	LCV'S		2.50	Nos.	-	1,918	0.0
iv.	MOTOR CYCLES		2.06	Nos.	-	146,479	0.0
v.	TRACTORS		0.25	Nos.	1,742	5,678	30.7
vi.	CARS		0.50	Nos.	-	14,412	0.0
vii.	VANS & JEEPS*		1.18	Nos.	-		
viii.	THREE WHEELERS*		1.18	Nos.	-		
Grand Total		535	69.63				

*New items are reporting from selected companies added since July (2019-20)

Table 4: Cumulative Production of Selected Items Pertaining to Large-Scale Manufacturing Sector, 2019-20 (Jul to Apr) Vs 2018-19 (Jul to Apr)

Sr. No.	Industrial Sector/ Items	No. of Industrial Units as per CMI 2005-06	WEIGHT (2005-06)	Unit of Quantity	Production		Index of Production in 2019-20 (Jul-April) with 2018-19 (Jul-April)
					2019-20 (Jul-April)	2018-19 (Jul-April)	
1.	VEGETABLE GHEE	35	1.61				
i.	VEGETABLE GHEE		1.11	M.Tons	342,367	343,553	99.7
ii.	COOKING OIL		0.50	M.Tons	157,839	157,019	100.5
2.	SUGAR	26	4.32				
i.	SUGAR		4.32	M.Tons	1,415,303	1,809,582	78.2
3.	TEA	7	1.23				
i.	TEA		1.23	M.Tons	44,711	68,138	65.6
4.	BEVERAGES	13	0.85				
i.	BEVERAGES		0.85	"000" NOs.	880,132	992,647	88.7
ii.	WATER*		0.85	"000" NOs.	154,829		
5.	COTTON TEXTILE	133	13.65				
i.	COTTON YARN		9.10	M.Tons	176,530	220,183	80.2
ii.	COTTON FABRICS		4.13	"000" Sq. M	107,191	126,529	84.7
iii.	M.M.YARN		0.42	M.Tons	8,259	21,382	38.6
6.	LEATHER TANNING	30	0.29				
i.	UPPER LEATHER		0.07	"000" Sq. M.	10,140	12,593	80.5
ii.	WET BLUE TANNED		0.22	"000" Sq. M.	928	1,054	88.1
7.	COTTON GINNING & PRESSING	85	3.30				
i.	C.G.& PRESSING		3.30	Bales	3,472,114	4,148,976	83.7
8.	PAPER & PAPER BOARD	6	0.01				
i.	PRINTING PAPER		0.01	M.Tons	3,757	3,016	124.6
ii.	WRITTEN PAPER		0.01	M.Tons	2,767	3,031	91.3
iii.	PACKING & OTHER PAPER		0.01	M.Tons	15,408	17,694	87.1
iv.	ADVERTISING MATERIAL*		0.01	M.Tons	235		
9.	PHARMACEUTICALS	78	6.37				
i.	TABLETS		1.67	"000" NOs.	20,621,153	21,222,140	97.2
ii.	LIQUIDS/SYRUPS		1.97	"000" Liters.	65,714	75,616	86.9
iii.	CAPSULES		1.36	"000" NOs.	2,786,901	2,684,407	103.8
iv.	INJECTIONS		1.22	"000" NOs.	947,203	968,429	97.8
v.	OINTMENT		0.15	KGs.	2,247,329	2,301,758	97.6
10.	ACID, ALKALIES & SALT	3	0.04				
i.	SULPHURIC ACID		0.04	M.Tons	22,603	25,330	89.2
11.	FERTILIZER	3	3.50				
i.	UREA		3.50	M.Tons	2,281,071	2,043,490	111.6
ii.	AMONIA		3.50	M.Tons	542,114	364,669	148.7
iii.	DAP*		3.50	M.Tons	590,376		
12.	PAINTS & VARNISH	9	0.32				
i.	PAINTS		0.32	M.Tons	1,018	1,143	89.1
ii.	VARNISH		0.32	"000" Liters.	3,755	4,900	76.6

Sr. No.	Industrial Sector/ Items	No. of Industrial Units as per CMI 2005-06	WEIGHT (2005-06)	Unit of Quantity	Production		Index of Production in 2019-20 (Jul-April) with 2018-19 (Jul-April)
					2019-20 (Jul-April)	2018-19 (Jul-April)	
13.	SOAP	38	1.66				
i.	WASHING SOAP		1.66	M.Tons	49,811	44,410	112.2
ii.	DETERGENT POWDER		1.66	M.Tons	142,370	142,496	99.9
iii.	TOILET SOAP		1.66	M.Tons	19,023	20,056	94.8
iv.	TOOTH PASTE*		1.66	M.Tons	7,757		
14.	PETROLEUM PRODUCTS	2	9.32				
i.	L.P.G		9.32	"000" Liters.	20,400	26,479	77.0
ii.	NAPHTHA SOLVENT		9.32	"000" Liters.	205,214	264,050	77.7
iii.	KEROSENE OIL		9.32	"000" Liters.	8,426	7,622	110.6
iv.	H.S.D		9.32	"000" Liters.	1,039,200	1,220,050	85.2
v.	FURNACE OIL		9.32	"000" Liters.	552,525	720,569	76.7
vi.	ASPHALT 80-100		9.32	"000" Liters.	114,861	74,651	153.9
vii.	ASPHALT 60-70		9.32	"000" Liters.	35,875	25,353	141.5
viii.	MOTOR SPRIT		9.32	"000" Liters.	147,041	248,624	59.1
ix.	JET FUEL		9.32	"000" Liters.	116,078	134,565	86.3
x.	LUBRICATING OIL		9.32	"000" Liters.	51,726	49,842	103.8
xi.	OTHERS*		0.00	"000" Liters.	327,872	1,186	
15.	TYRES & TUBES	4	0.41				
i.	MOTOR TYRE		0.41	Nos.	1,871,235	2,241,566	83.5
ii.	MOTOR TUBE		0.41	Nos.	448,126	580,510	77.2
16.	CEMENT	11	3.86				
i.	CEMENT		3.86	M.Tons	1,378,319	1,142,531	120.6
17.	M.S.PRODUCTS	28	4.88				
i.	M.S PRODUCTS		4.88	M.Tons	43,612	38,068	114.6
18.	SAFETY RAZOR BLADE	1	0.40				
i.	SAFETY RAZOR BLAD		0.04	"000" NOs.	563,555	695,883	81.0
19.	SEWING MACHINES	3	0.25				
i.	SEWING MACHINES		0.25	Nos.	24,827	27,791	89.3
20.	ELEC. APPLIANCES	3	2.21				
i.	REFRIGERATORS		0.11	Nos.	394,748	459,755	85.9
ii.	AIR-CONDITIONERS		0.60	Nos.	48,859	133,536	36.6
iii.	DEEP FREEZERS		0.50	Nos.	7,875	13,556	58.1
iv.	WASHING MACHINES		0.50	Nos.	194,584	157,535	123.5
v.	MICROWAVE OVEN*		0.50	Nos.	262,909		
21.	AUTOMOBILE	17	11.15				
i.	TRUCKS		2.71	Nos.	2,781	5,418	51.3
ii.	BUSES		0.77	Nos.	422	735	57.4
iii.	LCV'S		2.50	Nos.	11,840	21,049	56.2
iv.	MOTOR CYCLES		2.06	Nos.	1,126,102	1,446,088	77.9
v.	TRACTORS		0.25	Nos.	26,179	43,135	60.7
vi.	CARS		0.50	Nos.	96,345	183,530	52.5
vii.	VANS & JEEPS*		1.18	Nos.	3,447		
viii.	THREE WHEELERS*		1.18	Nos.	31,367		
	Grand Total	535	69.63				

*New items are reporting from selected companies added since July (2019-20)

Table 5: Employment in Selected Large-Scale Manufacturing Sector, April-2020 Vs March-2020

Sr. No.	Industrial Sector/ Items	No. of Industrial Units as per CMI 2005-06	Total Employees		Production Worker	
			April:2020	Mar:2020	April:2020	Mar:2020
1	<u>VEGETABLE GHEE</u>	35	2,258	2,258	1,574	1,574
2	<u>SUGAR</u>	26	10,511	10,494	5,779	6,283
3	<u>TEA</u>	7	3,094	3,117	2,632	2,655
4	<u>BEVERAGES</u>	13	3,598	3,395	1,537	1,400
5	<u>COTTON TEXTILE</u>	133	53,388	53,452	41,195	41,202
6	<u>LEATHER TANNING</u>	30	6,344	6,344	5,605	5,605
7	<u>PAPER & PAPER BOARD</u>	6	2,238	2,246	1,594	1,600
8	<u>PHARMACEUTICALS</u>	78	6,269	6,271	3,660	3,659
9	<u>ACID, ALKALIES & SALT</u>	3	34	34	22	22
10	<u>FERTILIZER</u>	3	986	986	821	821
11	<u>PAINTS & VARNISH</u>	9	103	103	54	54
12	<u>SOAP</u>	38	2,071	2,086	1,724	1,817
13	<u>PETROLEUM PRODUCTS</u>	2	435	435	338	338
14	<u>TYRES & TUBES</u>	4	-	5,724	-	4,044
15	<u>CEMENT</u>	11	4,378	4,378	1,868	1,868
16	<u>STEEL PRODUCTS</u>	1	-	9,149	-	6,191
17	<u>M.S PRODUCTS</u>	28	827	827	670	670
18	<u>SAFETY RAZOR BLAD</u>	1	288	288	251	251
19	<u>SEWING MACHINES</u>	3	-	410	-	354
20	<u>ELEC. APPLIANCES</u>	3	-	750	-	663
21	<u>AUTOMOBILE</u>	17	14,877	14,877	6,825	6,912
22	<u>STORAGE BATTERIES</u>	4	1,809	2,121	1,600	2,470
Grand Total		455	113,507	129,745	77,748	90,453

Table 6: Employment in Selected Large-Scale Manufacturing Sector, April-2020 Vs April-2019

Sr. No.	Industrial Sector/ Items	No. of Industrial Units as per CMI 2005-06	Employees		Production Worker	
			April:2020	April:2019	April:2020	April:2019
1	<u>VEGETABLE GHEE</u>	35	2,258	2,238	1,574	1,635
2	<u>SUGAR</u>	26	10,511	9,266	5,779	5,839
3	<u>TEA</u>	7	3,094	140	2,632	96
4	<u>BEVERAGES</u>	13	3,598	3,437	1,537	1,792
5	<u>COTTON TEXTILE</u>	133	53,388	57,421	41,195	44,010
6	<u>LEATHER TANNING</u>	30	6,344	5,582	5,605	4,707
7	<u>PAPER & PAPER BOARD</u>	6	2,238	507	1,594	433
8	<u>PHARMACEUTICALS</u>	78	6,269	9,668	3,660	5,917
9	<u>ACID, ALKALIES & SALT</u>	3	34	34	22	22
10	<u>FERTILIZER</u>	3	986	336	821	247
11	<u>PAINTS & VARNISH</u>	9	103	106	54	57
12	<u>SOAP</u>	38	2,071	3,254	1,724	2,885
13	<u>PETROLEUM PRODUCTS</u>	2	435	417	338	344
14	<u>TYRES & TUBES</u>	4	-	6,008	-	4,220
15	<u>CEMENT</u>	11	4,378	5,124	1,868	2,148
16	<u>STEEL PRODUCTS</u>	1	-	9,829	-	6,747
17	<u>M.S PRODUCTS</u>	28	827	827	670	670
18	<u>SAFETY RAZOR BLAD</u>	1	288	288	251	257
19	<u>SEWING MACHINES</u>	3	-	151	-	110
20	<u>ELECTRICAL APPARATUS</u>	3	-	750	-	663
21	<u>AUTOMOBILE</u>	17	14,877	3,244	6,825	2,549
22	<u>STORAGE BATTERIES</u>	4	1,809		1,600	
	Grand Total	455	113,507	118,627	77,748	85,348

**Table 7: Average Monthly Employment in Selected Large Scale Manufacturing Sector,
2019-20 (Jul to Apr) Vs 2018-19 (Jul to Apr)**

Sr. No.	Industrial Sector/ Items	No. of Industrial Units as per CMI 2005-06	Average Monthly Total Employment		Average Monthly Production Worker	
			(Jul-April) 2019-20	(Jul-April) 2018-19	(Jul-April) 2019-20	(Jul-April) 2018-19
1	<u>VEGETABLE GHEE</u>	35	2,237	2,379	1,606	1,781
2	<u>SUGAR</u>	26	8,529	9,148	5,534	5,855
3	<u>TEA</u>	7	3,113	142	2,184	99
4	<u>BEVERAGES</u>	13	3,071	3,977	1,160	1,920
5	<u>COTTON TEXTILE</u>	133	54,265	57,281	42,146	43,759
6	<u>LEATHER TANNING</u>	30	6,530	5,758	5,562	4,879
7	<u>PAPER & PAPER BOARD</u>	6	2,252	535	1,627	465
8	<u>PHARMACEUTICALS</u>	78	6,218	9,622	3,472	6,179
9	<u>ACID, ALKALIES & SALT</u>	3	34	34	22	22
10	<u>FERTILIZER</u>	3	968	341	803	251
11	<u>PAINTS & VARNISH</u>	9	105	106	56	54
12	<u>SOAP</u>	38	2,483	3,333	2,159	2,965
13	<u>PETROLEUM PRODUCTS</u>	2	434	419	339	346
14	<u>TYRES & TUBES</u>	4	5,250	6,112	3,703	4,263
15	<u>CEMENT</u>	11	4,551	5,164	1,932	2,266
16	<u>STEEL PRODUCTS</u>	1	8,380	10,240	5,679	7,110
17	<u>M.S PRODUCTS</u>	28	827	928	670	762
18	<u>SAFETY RAZOR BLAD</u>	1	288	288	253	258
19	<u>SEWING MACHINES</u>	3	373	149	323	109
20	<u>ELECTRICAL APPARATUS</u>	3	675	750	597	663
21	<u>AUTOMOBILE</u>	17	14,989	3,380	6,878	2,632
22	<u>STORAGE BATTERIES</u>	4	2,094	-	2,060	-
Grand Total		455	127,666	120,086	88,766	86,634

Annexure – A: Proforma/ Questionnaire



**GOVERNMENT OF SINDH
PLANNING & DEVELOPMENT DEPARTMENT
BUREAU OF STATISTICS**

www.sindhbos.gov.pk

Street-13, Block-8, Kehkashan Clifton, Karachi-75600, P.O.Box# 3879



021-99251259



ddindustries.sindhbos@gmail.com / m.kazimjafri@hotmail.com

The information supplied will be kept strictly confidential and will be used for statistical purpose only.	REPORT FOR	
	MONTH	YEAR

MONTHLY SURVEY OF INDUSTRIAL PRODUCTION AND EMPLOYMENT IN SINDH.

INDUSTRY CODE

--	--	--	--	--

Estb: Code

--	--	--	--

LOCATION CODE

--	--

PART-I GENERAL PARTICULARS

i) Name and Address of the Establishment _____

ii) Name, Designation, Telephone, Cell and _____

Fax# of the person to be contacted. _____

iii) Website and E-mail Address _____

PART-II PRODUCTION DATA

S.No	Major Items of Production	Code	Unit of Quantity	Code	Previous Month	Current Month	Reasons of Growth/ Decline

PART-III WORKING DAYS AND EMPLOYMENT

i) No. of days establishment worked _____

ii) No. of Production workers. Male _____ Female _____ Total _____

iii) No. of Non production workers Male _____ Female _____ Total _____

TOTAL (ii + iii)

Male _____ Female _____ Total _____

Note: Production Workers mean those who are directly associated with production. It includes those engaged in manufacturing, assembling packing repairing etc. Working Supervisor should also be included, Non production worker mean those who are not directly associated with production it includes Administrative Clerical and Services Staff like Chowkidar, Driver and Sweeper.

Signature _____

Designation _____

Date _____

Annexure – B: Important Definitions

Large Scale Manufacturing Industries

Establishments where 10 or more employees are working are called large Scale Manufacturing Industries.

Employees

Employees mean all persons whether part time or full time who work in the establishments and receive remuneration in cash or in kind. Working proprietors, unpaid family workers and home workers are excluded from the category of employee. There are two types of employees Production Workers and Non-Production Workers.

- **Production Workers**

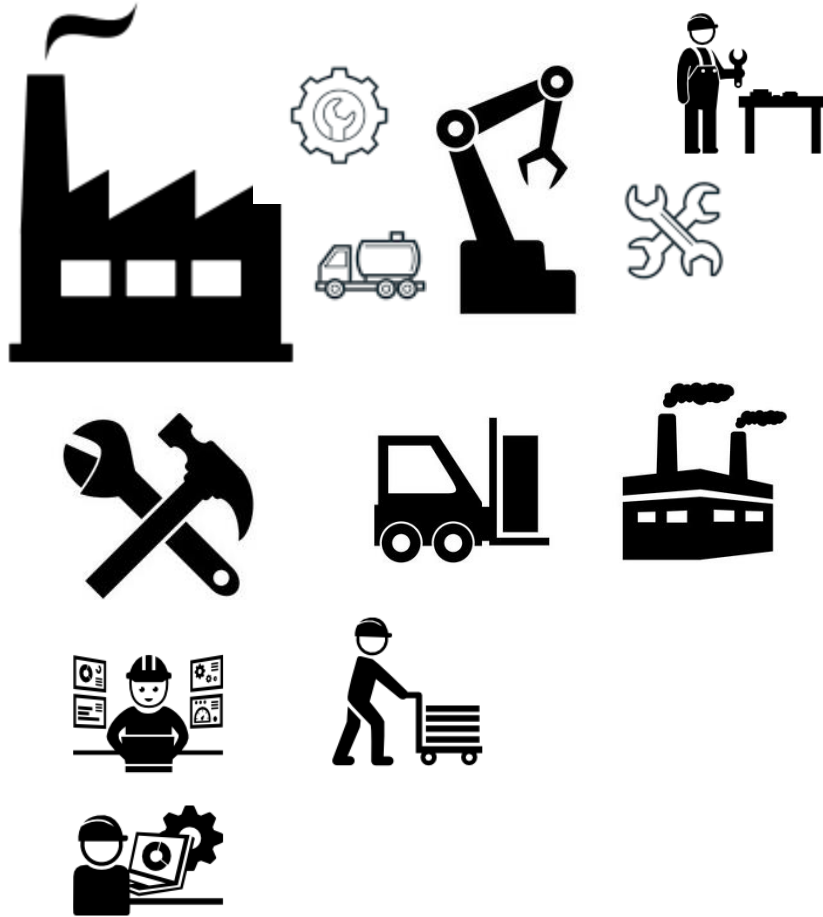
Are engaged in work directly associated with production like manufacturing, assembling, packing, repairing etc. Working supervisors and persons engaged for repairs and maintenance are also included.

- **Non-Production Workers**

Include administrative and professional employees, white-collar office employees, drivers, watchmen/guards, peons, sweepers, office boys, etc.

Annexure – C: Data Users

- Ministry of Industries & Production, Government of Pakistan.
- Planning & Development Department, Government of Sindh.
- Pakistan Bureau of Statistics, Government of Pakistan.
- State Bank of Pakistan.
- Provincial Bureaus of Statistics, Punjab, KPK and Baluchistan.
- Research & Training Wing, Planning & Development Department, Government of Sindh.



(Industries Section)
Bureau of Statistics
Planning & Development
Department
Government of Sindh
m.kazimjafri@hotmail.com

ST:13 Block-8 Kehkashan Clifton, Ch. Kahliqz-zaman road, Karachi
Ph. 021-99251259, Email: ddindustries.sindhbos@gmail.com
www.sindhbos.gov.pk