

# MONTHLY SURVEY OF INDUSTRIAL PRODUCTION & EMPLOYMENT IN SINDH

**December, 2020**

Industries Section. BOS



BUREAU OF STATISTICS  
PLANNING & DEVELOPMENT DEPARTMENT  
GOVERNMENT OF SINDH

FOR OFFICIAL USE ONLY

# Sindh Monthly Survey of Industrial Production & Employment (MIPE)

## December, 2020



Bureau of Statistics  
Planning & Development Department  
Government of Sindh  
[www.sindhbos.gov.pk](http://www.sindhbos.gov.pk)  
[ddindustries.sindhbos.gov.pk](http://ddindustries.sindhbos.gov.pk)

## Preface

Monthly Survey of Industrial Production and Employment (MIPE) is being conducted/ published by Sindh Bureau of Statistics on regular basis since 1970s. This report provides important statistics in respect of industrial production & employment of large Scale Manufacturing (LSM) industries in Sindh.

This report contains information on 61 items manufactured in 22 selected large scale industrial sectors covering 537 industrial establishments (selection on the basis of CMI 2005-06). These industries account for 69.6% of total value added of large scale manufacturing sector in Sindh.

MIPE Report provides information regarding General Index and Quantum Index of Manufacturing (QIM) to base period 2005-06, and analytical analysis on the current status of production and employment in manufacturing sector.

All the efforts are made to improve the industrial statistics and hope this report would prove useful to policy makers, planners, researchers and other data users. Suggestion/ recommendations from the users will always be welcomed and appreciated.

**Shahzad Fazal Abbasi**  
**Director General**  
Bureau of Statistics  
Planning & Development Department  
Government of Sindh

## Contents

PREFACE .....	II
<b>CONTENTS</b> .....	<b>III</b>
<i>LIST OF TABLES</i> .....	IV
<i>LIST OF FIGURES</i> .....	IV
<i>LIST OF EQUATIONS</i> .....	IV
MIPE TEAM (INDUSTRIES SECTION).....	V
<b>INTRODUCTION</b> .....	<b>1</b>
<b>1. QUESTIONNAIRE/ PROFORMA</b> .....	<b>2</b>
<b>2. METHODOLOGY</b> .....	<b>2</b>
<b>3. EDITING</b> .....	<b>2</b>
<b>4. QUANTUM INDEX OF MANUFACTURING (QIM)</b> .....	<b>3</b>
<b>REPORT ANALYSIS</b> .....	<b>4</b>
<b>ANNEXURE – A PROFORMA/ QUESTIONNAIRE</b> .....	<b>15</b>
<b>ANNEXURE – B IMPORTANT DEFINITIONS</b> .....	<b>16</b>
<b>ANNEXURE – C DATA USERS</b> .....	<b>17</b>

## *List of Tables*

TABLE 1: SERIES OF QUANTUM INDEX OF MANUFACTURING (QIM) AT (2005-06=100) _____	4
TABLE 2: PRODUCTION OF SELECTED ITEMS PERTAINING TO LARGE-SCALE MANUFACTURING SECTOR, DECEMBER-2020 VS NOVEMBER-2020 _____	6
TABLE 3: PRODUCTION OF SELECTED ITEMS PERTAINING TO LARGE-SCALE MANUFACTURING SECTOR, DECEMBER-2020 VS DECEMBER-2019 _____	8
TABLE 4: PRODUCTION OF SELECTED ITEMS PERTAINING TO LARGE-SCALE MANUFACTURING SECTOR, _____	10
TABLE 5: EMPLOYMENT IN SELECTED LARGE-SCALE MANUFACTURING SECTOR, DECEMBER-2020 VS NOVEMBER-2020 _____	12
TABLE 6: EMPLOYMENT IN SELECTED LARGE-SCALE MANUFACTURING SECTOR, DECEMBER-2020 VS DECEMBER-2019 _____	13
TABLE 7: AVERAGE MONTHLY EMPLOYMENT IN SELECTED LARGE SCALE MANUFACTURING SECTOR, _____	14

## *List of Figures*

FIGURE 1: TREND OF QUANTUM INDEX OF LARGE SCALE MANUFACTURING INDUSTRIES AT BASE YEAR 2005-06 _____	5
FIGURE 2: TREND OF AVERAGE MONTHLY EMPLOYMENT IN LARGE SCALE MANUFACTURING INDUSTRIES _____	5

## *List of Equations*

EQUATION 1 LASPAYER'S INDEX _____	3
-----------------------------------	---

**MIPE Team (Industries Section)**

---

**Team Lead:**

**Muhammad Kazim Jafri**

**Deputy Director**

**Team Members:**

**1. Ms. Rukhsana Aziz**

**Statistical Officer**

**2. Mr. Raza Ameer**

**Statistical Officer**

**Support in Data Collection and Compilation:**

**1. Mr. Muhammad Younus Bukhari**

**Jr. Stenographer**

**2. Mr. Muhammad Akram Bhatti**

**Statistical Computer**

## Introduction

Industrial Statistics is very essential tool to track industrial growth and implementation of policies in right directions. This sector has great importance for economic development of country. As per the composition of Pakistan's economy in 2019-20, Agriculture Sector is 19.31%, Industries Sector is 19.29% and Services Sector is 61.4%.

According to the Pakistan Bureau of Statistics, for fiscal year 2020 followed partial lockdown situation faced by industrial sector in the country due to COVID-19. A significant impact has been observed in the manufacturing sector, particularly Large-Scale Manufacturing and Small-Scale Manufacturing. In the industrial sector, 2.64% negative provincial growth has been observed (PBS). From the share of industrial sector 12.48% are manufacturing and more specifically 9.5% is Large Scale Manufacturing (LSM) Sector. The role of Sindh province in the Large Scale Manufacturing is very vital. However, Sindh QIM's trend of overall manufacturing index is on declining side which mainly caused by COVID-19. As the Karachi is the largest metropolitan city of Pakistan, according to Karachi Chamber of Commerce and Industry (KCCI) it produces 15% with an annual Gross Domestic Product (GDP). Sindh Business Register (SBR), 2017 established by Sindh Bureau of Statistics, Planning & Development Department shows that 67% establishments/ factories are located in Karachi Division and remaining 33% are located in other districts of Sindh.

For the timely and quality industrial statistics, Sindh Bureau of Statistics, Planning & Development Department has been conducting Monthly Survey of Industrial Production and Employment (MIPE). This survey report includes 61 items manufactured in 22 large scale Industrial sectors from 537 establishments/ factories in Sindh. The sample of 537 firms was drawn from the last Census of Manufacturing Industries (CMI), 2005-06 and these industries account for 70.6% of total value added in terms of production during 2005-06, CMI. However, the recent CMI 2015-16 has been conducted by PBS, as it will be published that will be used as base year and QIM base year will be shifted from 2005-06 to 2015-16. In addition to collection, compilation, tabulation and processing of manufacturing data, Bureau of Statistics also computes monthly Quantum Index of Manufacturing by using the weights of production. The quantum index is an essential indicator to gauge to aggregate monthly production of province.

## **1. Questionnaire/ Proforma**

A questionnaire/ Proforma is a research instrument consisting of a series of questions and other prompts for the purpose of gathering information from respondents. A pre-tested questionnaire is used for the data collection of industrial inputs related to employment and production, attached at **Annex-A**.

## **2. Methodology**

The basic method of data collection for Sindh MIPE is the posting/ mailing of MIPE Questionnaires. More than 70% monthly returns are received to this Bureau through mail from industrial units. The non-responding or remaining establishments are visited by the officers/ officials of this Bureau, besides this the method of emailing, fax and telephonic approach are also used for collection of monthly returns and increase the response rate.

## **3. Editing**

All the received returns are scrutinized for accuracy and consistency with previous data by the Industries Section of this Bureau. As per *Unit Calculation Sheet* different units of similar products are converted into the reporting units. In case of huge discrepancy between current and previous returns the factory management is approached to rectify that figures. In the absence establishment's return or non-availability of concerned person the average production of last month or the last month information is repeated for equivalence.



#### 4. Quantum Index of Manufacturing (QIM)

A quantum index is an index based on quantity units of goods such as number or weight. Sindh bureau of Statistics is computing Index on Industrial Production using 2005-06 as base year. Index Series is generated by using Laspayer's Index.

$$QIM = \frac{\sum_{i=1}^n \frac{q_{im}}{q_{i0}} w_i}{\sum_{i=1}^n w_i} \times 100$$

*Equation 1 Laspayer's Index*

$q_{im}$  = Production of  $i^{\text{th}}$  item during the current month

$q_{i0}$  = Average Production of the same  $i^{\text{th}}$  item in the base period (2005-06)

$w_i$  = Weight of the  $i^{\text{th}}$  item in the base period (2005-06)

$\sum_{i=1}^n w_i$  = Total Weight of 22 large scale industrial sectors covering 537 establishments in the base period with respect to the total value added of all the industries covered in CMI in the base year 2005-06.

## Report Analysis

Summary findings on the basis of Index of Industrial Production are as follows:

- Overall Production in December, 2020 is increased by 9.3% as compared to last month (i.e. November, 2020)
- Overall Production in December, 2020 is considerably high by 58.9% as compared to corresponding month of last year (i.e. December, 2019)
- Cumulative production from July to December (2020-21) is significantly increased by 12.9% as compared to the period of July to December (2019-20)
- Employment during December, 2020 is almost same as compared to previous month (i.e. November, 2020).
- Employment during December, 2020 is decreased around 6% in comparison with December, 2019.
- Average monthly employment during the period of July-December (2020-21) is 8% lower as compared to the corresponding period of July-December (2019-20).

*Table 1: Series of Quantum Index of Manufacturing (QIM) at (2005-06=100)*

Month/ Year	2015-16	2016-17	2017-18	2018-19	2019-20	2020-21
July	255.7	284.0	327.0	290.8	259.7	294.2
August	266.0	287.7	336.4	265.5	220.9	238.5
September	274.2	281.5	330.9	311.3	266.7	295.4
October	247.0	291.4	355.7	287.0	277.0	315.6
November	283.7	317.1	343.2	273.3	280.3	320.5
December	261.7	302.8	341.5	265.2	223.7	350.6
January	297.4	286.1	374.0	321.3	263.8	
February	293.2	283.3	324.5	309.0	313.2	
March	253.9	275.6	341.4	279.7	258.2	
April	250.6	276.8	338.5	258.2	172.1	
May	254.4	283.9	311.3	248.2	199.8	
June	259.0	258.1	307.4	257.6	324.9	
<b>Average (Geometric Mean)</b>	<b>265.9</b>	<b>285.4</b>	<b>335.5</b>	<b>279.7</b>	<b>251.3</b>	

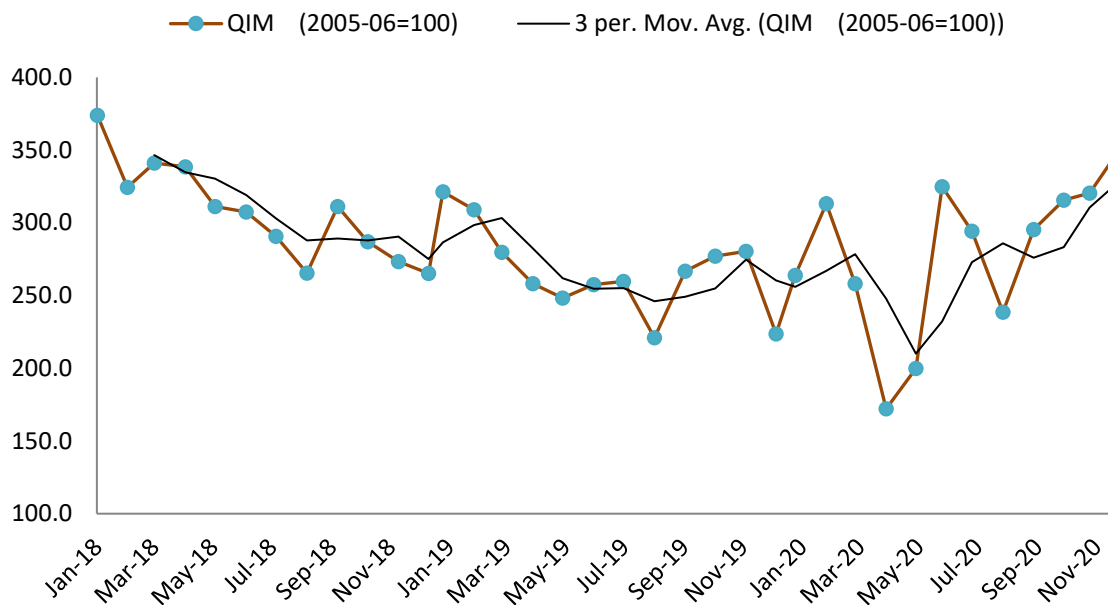


Figure 1: Trend of Quantum Index of Large Scale Manufacturing Industries at base year 2005-06

Overall QIM series shows positive trend especially in last five months and the main cause of positive growth in the current month is to increase in the production of Paints & Varnish, Tyre & Tube, Cement and Electrical Appliances and significant increase in seasonal item which is sugarcane.

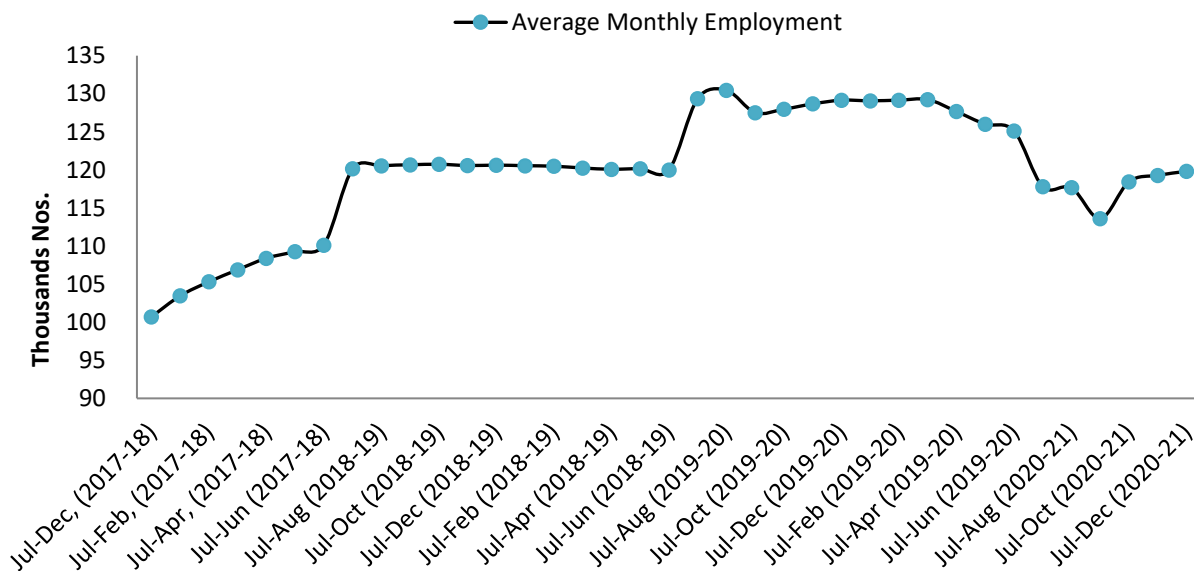


Figure 2: Trend of Average Monthly Employment in Large Scale Manufacturing Industries

The continuous growth in QIM since last five month causing the stable employment in Large Scale Manufacturing and employment graph is showing steady growth and it is expected that the further positive growth in production activities will have lag impact on employment and situation may be improved.

Table 2: Production of Selected Items Pertaining to Large-Scale Manufacturing Sector, December-2020 Vs November-2020

Sr. No.	Industrial Sector/ Items	No. of Industrial Units as per CMI 2005-06	WEIGHT (2005-06)	Unit of Quantity	Production		Index of Production in Dec:2020 with Nov: 2020
					Dec:2020	Nov:2020	
<b>1.</b>	<b><u>VEGETABLE GHEE</u></b>	<b>35</b>	<b>1.61</b>				
i.	VEGETABLE GHEE		1.11	M.Tons	32,377	36,974	87.6
ii.	COOKING OIL		0.50	M.Tons	14,053	16,316	86.1
<b>2.</b>	<b><u>SUGAR</u></b>	<b>26</b>	<b>4.32</b>				
i.	SUGAR		4.32	M.Tons	302,705	93,676	323.1
<b>3.</b>	<b><u>TEA</u></b>	<b>7</b>	<b>1.23</b>				
i.	TEA		1.23	M.Tons	5,681	5,029	113.0
<b>4.</b>	<b><u>BEVERAGES</u></b>	<b>13</b>	<b>0.85</b>				
i.	BEVERAGES		0.85	"000" NOs.	76,800	79,767	96.3
ii.	WATER*		0.85	"000" NOs.	14,506	15,850	91.5
<b>5.</b>	<b><u>COTTON TEXTILE</u></b>	<b>133</b>	<b>13.65</b>				
i.	COTTON YARN		9.10	M.Tons	20,681	17,411	118.8
ii.	COTTON FABRICS		4.13	"000" Sq. M	19,569	20,464	95.6
iii.	M.M.YARN		0.42	M.Tons	1,787	1,485	120.4
<b>6.</b>	<b><u>LEATHER TANNING</u></b>	<b>30</b>	<b>0.29</b>				
i.	UPPER LEATHER		0.07	"000" Sq. M.	794	892	89.0
ii.	WET BLUE TANNED		0.22	"000" Sq. M.	98	86	114.0
<b>7.</b>	<b><u>COTTON GINNING &amp; PRESSING</u></b>	<b>85</b>	<b>3.30</b>				
i.	C.G.& PRESSING		3.30	Bales	996,511	1,009,892	98.7
<b>8.</b>	<b><u>PAPER &amp; PAPER BOARD</u></b>	<b>6</b>	<b>0.01</b>				
i.	PRINTING PAPER		0.01	M.Tons	160	274	58.4
ii.	WRITTEN PAPER		0.01	M.Tons	102	374	27.3
iii.	PACKING & OTHER PAPER		0.01	M.Tons	1,785	1,751	101.9
iv.	ADVERTISING MATERIAL		0.01	M.Tons	27	27	100.0
<b>9.</b>	<b><u>PHARMACEUTICALS</u></b>	<b>78</b>	<b>6.37</b>				
i.	TABLETS		1.67	"000" NOs.	1,985,124	1,888,058	105.1
ii.	LIQUIDS/SYRUPS		1.97	"000" Liters.	9,231	9,001	102.6
iii.	CAPSULES		1.36	"000" NOs.	362,998	359,404	101.0
iv.	INJECTIONS		1.22	"000" NOs.	129,217	130,453	99.1
v.	OINTMENT		0.15	KGs.	208,593	199,418	104.6
<b>10.</b>	<b><u>ACID, ALKALIES &amp; SALT</u></b>	<b>3</b>	<b>0.04</b>				
i.	SULPHURIC ACID		0.04	M.Tons	2,354	2,237	105.2
<b>11.</b>	<b><u>FERTILIZER</u></b>	<b>3</b>	<b>3.50</b>				
i.	UREA		3.50	M.Tons	236,984	239,261	99.0
ii.	AMONIA		3.50	M.Tons	44,871	47,641	94.2
iii.	DAP		3.50	M.Tons	72,751	77,136	94.3
<b>12.</b>	<b><u>PAINTS &amp; VARNISH</u></b>	<b>9</b>	<b>0.32</b>				
i.	PAINTS		0.32	M.Tons	92	88	104.5
ii.	VARNISH		0.32	"000" Liters.	342	199	171.9
<b>13.</b>	<b><u>SOAP</u></b>	<b>38</b>	<b>1.66</b>				
i.	WASHING SOAP		1.66	M.Tons	7,126	5,144	138.5
ii.	DETERGENT POWDER		1.66	M.Tons	15,289	14,070	108.7

Sr. No.	Industrial Sector/ Items	No. of Industrial Units as per CMI 2005-06	WEIGHT (2005-06)	Unit of Quantity	Production		Index of Production in Dec:2020 with Nov: 2020
					Dec:2020	Nov:2020	
iii.	TOILET SOAP		1.66	M.Tons	1,770	2,256	78.5
iv.	TOOTH PASTE		1.66	M.Tons	999	930	107.4
<b>14.</b>	<b><u>PETROLEUM PRODUCTS</u></b>	<b>2</b>	<b>9.32</b>				
i.	L.P.G		9.32	"000" Liters.	2,728	2,454	111.1
ii.	NAPHTHA SOLVENT		9.32	"000" Liters.	16,825	14,400	116.8
iii.	KEROSENE OIL		9.32	"000" Liters.	-	-	0.0
iv.	H.S.D		9.32	"000" Liters.	122,883	129,261	95.1
v.	FURNACE OIL		9.32	"000" Liters.	53,658	58,545	91.7
vi.	ASPHALT 80-100		9.32	"000" Liters.	339	431	78.6
vii.	ASPHALT 60-70		9.32	"000" Liters.	7,344	4,112	178.6
viii.	MOTOR SPRIT		9.32	"000" Liters.	23,577	19,432	121.3
ix.	JET FUEL		9.32	"000" Liters.	11,143	11,273	98.8
x.	LUBRICATING OIL		9.32	"000" Liters.	19,363	19,168	101.0
xi.	OTHERS		0.00	"000" Liters.	33,400	35,731	93.5
<b>15.</b>	<b><u>TYRES &amp; TUBES</u></b>	<b>4</b>	<b>0.41</b>				
i.	MOTOR TYRE		0.41	Nos.	242,174	196,569	123.2
ii.	MOTOR TUBE		0.41	Nos.	39,415	18,964	207.8
<b>16.</b>	<b><u>CEMENT</u></b>	<b>11</b>	<b>3.86</b>				
i.	CEMENT		3.86	M.Tons	515,499	466,920	110.4
<b>17.</b>	<b><u>M.S.PRODUCTS</u></b>	<b>28</b>	<b>4.88</b>				
i.	M.S PRODUCTS		4.88	M.Tons	3,659	3,902	93.8
<b>18.</b>	<b><u>STEEL PRODUCTS</u></b>	<b>2</b>	<b>1.02</b>				
i.	STEEL PRODUCTS		1.02	M.Tons	2,545	3,291	77.3
<b>19.</b>	<b><u>SAFETY RAZOR BLADE</u></b>	<b>1</b>	<b>0.40</b>				
i.	SAFETY RAZOR BLAD		0.04	"000" NOs.	75,352	72,338	104.2
<b>20.</b>	<b><u>SEWING MACHINES</u></b>	<b>3</b>	<b>0.25</b>				
i.	SEWING MACHINES		0.25	Nos.	1,450	1,430	101.4
<b>21.</b>	<b><u>ELEC. APPLIANCES</u></b>	<b>3</b>	<b>2.21</b>				
i.	REFRIGERATORS		0.11	Nos.	52,145	45,818	113.8
ii.	AIR-CONDITIONERS		0.60	Nos.	6,790	393	1727.7
iii.	DEEP FREEZERS		0.50	Nos.	253	223	113.5
iv.	WASHING MACHINES		0.50	Nos.	34,092	31,595	107.9
v.	MICROWAVE OVEN		0.50	Nos.	47,353	42,075	112.5
<b>22.</b>	<b><u>AUTOMOBILE</u></b>	<b>17</b>	<b>11.15</b>				
i.	TRUCKS		2.71	Nos.	231	274	84.3
ii.	BUSES		0.77	Nos.	48	73	65.8
iii.	LCV'S		2.50	Nos.	1,841	2,028	90.8
iv.	MOTOR CYCLES		2.06	Nos.	154,333	164,855	93.6
v.	TRACTORS		0.25	Nos.	4,196	3,807	110.2
vi.	CARS		0.50	Nos.	11,514	11,352	101.4
vii.	VANS & JEEPS		1.18	Nos.	855	883	96.8
viii.	THREE WHEELERS		1.18	Nos.	4,532	4,170	108.7
	<b>Grand Total</b>	<b>537</b>	<b>70.65</b>				

Table 3: Production of Selected Items Pertaining to Large-Scale Manufacturing Sector, December-2020 Vs December-2019

Sr. No.	Industrial Sector/ Items	No. of Industrial Units as per CMI 2005-06	WEIGHT (2005-06)	Unit of Quantity	Production		Index of Production in Dec:2020 with Dec:2019
					Dec:2020	Dec:2019	
<b>1.</b>	<b><u>VEGETABLE GHEE</u></b>	<b>35</b>	<b>1.61</b>				
i.	VEGETABLE GHEE		1.11	M.Tons	32,377	33,760	95.9
ii.	COOKING OIL		0.50	M.Tons	14,053	17,290	81.3
<b>2.</b>	<b><u>SUGAR</u></b>	<b>26</b>	<b>4.32</b>				
i.	SUGAR		4.32	M.Tons	302,705	50,056	604.7
<b>3.</b>	<b><u>TEA</u></b>	<b>7</b>	<b>1.23</b>				
i.	TEA		1.23	M.Tons	5,681	4,275	132.9
<b>4.</b>	<b><u>BEVERAGES</u></b>	<b>13</b>	<b>0.85</b>				
i.	BEVERAGES		0.85	"000" NOs.	76,800	84,722	90.6
ii.	WATER		0.85	"000" NOs.	14,506	16,373	88.6
<b>5.</b>	<b><u>COTTON TEXTILE</u></b>	<b>133</b>	<b>13.65</b>				
i.	COTTON YARN		9.10	M.Tons	20,681	16,542	125.0
ii.	COTTON FABRICS		4.13	"000" Sq. M	19,569	12,200	160.4
iii.	M.M.YARN		0.42	M.Tons	1,787	487	367.0
<b>6.</b>	<b><u>LEATHER TANNING</u></b>	<b>30</b>	<b>0.29</b>				
i.	UPPER LEATHER		0.07	"000" Sq. M.	794	1,239	64.1
ii.	WET BLUE TANNED		0.22	"000" Sq. M.	98	108	90.7
<b>7.</b>	<b><u>COTTON GINNING &amp; PRESSING</u></b>	<b>85</b>	<b>3.30</b>				
i.	C.G.& PRESSING		3.30	Bales	996,511	513,865	193.9
<b>8.</b>	<b><u>PAPER &amp; PAPER BOARD</u></b>	<b>6</b>	<b>0.01</b>				
i.	PRINTING PAPER		0.01	M.Tons	160	408	39.2
ii.	WRITTEN PAPER		0.01	M.Tons	102	319	32.0
iii.	PACKING & OTHER PAPER		0.01	M.Tons	1,785	1,840	97.0
iv.	ADVERTISING MATERIAL		0.01	M.Tons	27	30	90.0
<b>9.</b>	<b><u>PHARMACEUTICALS</u></b>	<b>78</b>	<b>6.37</b>				
i.	TABLETS		1.67	"000" NOs.	1,985,124	2,067,290	96.0
ii.	LIQUIDS/SYRUPS		1.97	"000" Liters.	9,231	6,976	132.3
iii.	CAPSULES		1.36	"000" NOs.	362,998	260,826	139.2
iv.	INJECTIONS		1.22	"000" NOs.	129,217	100,721	128.3
v.	OINTMENT		0.15	KGs.	208,593	231,557	90.1
<b>10.</b>	<b><u>ACID, ALKALIES &amp; SALT</u></b>	<b>3</b>	<b>0.04</b>				
i.	SULPHURIC ACID		0.04	M.Tons	2,354	2,601	90.5
<b>11.</b>	<b><u>FERTILIZER</u></b>	<b>3</b>	<b>3.50</b>				
i.	UREA		3.50	M.Tons	236,984	238,825	99.2
ii.	AMONIA		3.50	M.Tons	44,871	40,666	110.3
iii.	DAP*		3.50	M.Tons	72,751	72,759	100.0
<b>12.</b>	<b><u>PAINTS &amp; VARNISH</u></b>	<b>9</b>	<b>0.32</b>				
i.	PAINTS		0.32	M.Tons	92	124	74.2
ii.	VARNISH		0.32	"000" Liters.	342	496	69.0
<b>13.</b>	<b><u>SOAP</u></b>	<b>38</b>	<b>1.66</b>				
i.	WASHING SOAP		1.66	M.Tons	7,126	4,982	143.0
ii.	DETERGENT POWDER		1.66	M.Tons	15,289	14,663	104.3

Sr. No.	Industrial Sector/ Items	No. of Industrial Units as per CMI 2005-06	WEIGHT (2005-06)	Unit of Quantity	Production		Index of Production in Dec:2020 with Dec:2019
					Dec:2020	Dec:2019	
iii.	TOILET SOAP		1.66	M.Tons	1,770	1,906	92.9
iv.	TOOTH PASTE		1.66	M.Tons	999	777	128.6
<b>14.</b>	<b><u>PETROLEUM PRODUCTS</u></b>	<b>2</b>	<b>9.32</b>				
i.	L.P.G		9.32	"000" Liters.	2,728	205	1330.7
ii.	NAPHTHA SOLVENT		9.32	"000" Liters.	16,825	10,356	162.5
iii.	KEROSENE OIL		9.32	"000" Liters.	-	260	0.0
iv.	H.S.D		9.32	"000" Liters.	122,883	78,313	156.9
v.	FURNACE OIL		9.32	"000" Liters.	53,658	7,339	731.1
vi.	ASPHALT 80-100		9.32	"000" Liters.	-	2,735	0.0
vii.	ASPHALT 60-70		9.32	"000" Liters.	7,344	-	0.0
viii.	MOTOR SPRIT		9.32	"000" Liters.	23,577	406	5807.1
ix.	JET FUEL		9.32	"000" Liters.	11,143	9,185	121.3
x.	LUBRICATING OIL		9.32	"000" Liters.	19,363	-	0.0
xi.	OTHERS		0.00	"000" Liters.	33,400	63,542	52.6
<b>15.</b>	<b><u>TYRES &amp; TUBES</u></b>	<b>4</b>	<b>0.41</b>				
i.	MOTOR TYRE		0.41	Nos.	242,174	219,482	110.3
ii.	MOTOR TUBE		0.41	Nos.	39,415	38,714	101.8
<b>16.</b>	<b><u>CEMENT</u></b>	<b>11</b>	<b>3.86</b>				
i.	CEMENT		3.86	M.Tons	515,499	152,204	338.7
<b>17.</b>	<b><u>M.S.PRODUCTS</u></b>	<b>28</b>	<b>4.88</b>				
i.	M.S PRODUCTS		4.88	M.Tons	3,659	4,493	81.4
<b>18.</b>	<b><u>STEEL PRODUCTS</u></b>	<b>2</b>	<b>1.02</b>				
i.	STEEL PRODUCTS		1.02	M.Tons	2,545	-	0.0
<b>19.</b>	<b><u>SAFETY RAZOR BLADE</u></b>	<b>1</b>	<b>0.40</b>				
i.	SAFETY RAZOR BLAD		0.04	"000" NOs.	75,352	54,790	137.5
<b>20.</b>	<b><u>SEWING MACHINES</u></b>	<b>3</b>	<b>0.25</b>				
i.	SEWING MACHINES		0.25	Nos.	1,450	2,770	52.3
<b>21.</b>	<b><u>ELEC. APPLIANCES</u></b>	<b>3</b>	<b>2.21</b>				
i.	REFRIGERATORS		0.11	Nos.	52,145	39,959	130.5
ii.	AIR-CONDITIONERS		0.60	Nos.	6,790	2,619	259.3
iii.	DEEP FREEZERS		0.50	Nos.	253	290	87.2
iv.	WASHING MACHINES		0.50	Nos.	34,092	25,780	132.2
v.	MICROWAVE OVEN		0.50	Nos.	47,353	32,063	147.7
<b>22.</b>	<b><u>AUTOMOBILE</u></b>	<b>17</b>	<b>11.15</b>				
i.	TRUCKS		2.71	Nos.	231	267	86.5
ii.	BUSES		0.77	Nos.	48	55	87.3
iii.	LCV'S		2.50	Nos.	1,841	529	348.0
iv.	MOTOR CYCLES		2.06	Nos.	154,333	131,398	117.5
v.	TRACTORS		0.25	Nos.	4,196	774	542.1
vi.	CARS		0.50	Nos.	11,514	8,373	137.5
vii.	VANS & JEEPS		1.18	Nos.	855	201	425.4
viii.	THREE WHEELERS		1.18	Nos.	4,532	3,780	119.9
	<b>Grand Total</b>	<b>537</b>	<b>70.65</b>				

Table 4: Production of Selected Items Pertaining to Large-Scale Manufacturing Sector,  
2020-21 (Jul to Dec) Vs 2019-20 (Jul to Dec)

Sr. No.	Industrial Sector/ Items	No. of Industrial Units as per CMI 2005-06	WEIGHT (2005-06)	Unit of Quantity	Production		Index of Production in 2020-21 (Jul-Dec) with 2019-20 (Jul-Dec)
					2020-21 (Jul-Dec)	2019-20 (Jul-Dec)	
<b>1.</b>	<b><u>VEGETABLE GHEE</u></b>	<b>35</b>	<b>1.61</b>				
i.	VEGETABLE GHEE		1.11	M.Tons	207,739	205,910	100.9
ii.	COOKING OIL		0.50	M.Tons	89,128	90,787	98.2
<b>2.</b>	<b><u>SUGAR</u></b>	<b>26</b>	<b>4.32</b>				
i.	SUGAR		4.32	M.Tons	397,851	67,740	587.3
<b>3.</b>	<b><u>TEA</u></b>	<b>7</b>	<b>1.23</b>				
i.	TEA		1.23	M.Tons	26,507	27,481	96.5
<b>4.</b>	<b><u>BEVERAGES</u></b>	<b>13</b>	<b>0.85</b>				
i.	BEVERAGES		0.85	"000" NOs.	566,795	489,013	115.9
ii.	WATER		0.85	"000" NOs.	103,557	92,168	112.4
<b>5.</b>	<b><u>COTTON TEXTILE</u></b>	<b>133</b>	<b>13.65</b>				
i.	COTTON YARN		9.10	M.Tons	116,153	108,848	106.7
ii.	COTTON FABRICS		4.13	"000" Sq. M	105,855	61,029	173.4
iii.	M.M.YARN		0.42	M.Tons	6,158	6,031	102.1
<b>6.</b>	<b><u>LEATHER TANNING</u></b>	<b>30</b>	<b>0.29</b>				
i.	UPPER LEATHER		0.07	"000" Sq. M.	4,205	7,118	59.1
ii.	WET BLUE TANNED		0.22	"000" Sq. M.	499	635	78.6
<b>7.</b>	<b><u>COTTON GINNING &amp; PRESSING</u></b>	<b>85</b>	<b>3.30</b>				
i.	C.G.& PRESSING		3.30	Bales	3,289,449	3,269,560	100.6
<b>8.</b>	<b><u>PAPER &amp; PAPER BOARD</u></b>	<b>6</b>	<b>0.01</b>				
i.	PRINTING PAPER		0.01	M.Tons	1,703	2,258	75.4
ii.	WRITTEN PAPER		0.01	M.Tons	1,451	1,699	85.4
iii.	PACKING & OTHER PAPER		0.01	M.Tons	10,006	9,813	102.0
iv.	ADVERTISING MATERIAL		0.01	M.Tons	148	150	98.7
<b>9.</b>	<b><u>PHARMACEUTICALS</u></b>	<b>78</b>	<b>6.37</b>				
i.	TABLETS		1.67	"000" NOs.	11,957,677	12,166,841	98.3
ii.	LIQUIDS/SYRUPS		1.97	"000" Liters.	44,508	36,261	122.7
iii.	CAPSULES		1.36	"000" NOs.	2,046,224	1,574,583	130.0
iv.	INJECTIONS		1.22	"000" NOs.	723,501	508,686	142.2
v.	OINTMENT		0.15	KGs.	1,216,270	1,310,784	92.8
<b>10.</b>	<b><u>ACID, ALKALIES &amp; SALT</u></b>	<b>3</b>	<b>0.04</b>				
i.	SULPHURIC ACID		0.04	M.Tons	13,848	15,939	86.9
<b>11.</b>	<b><u>FERTILIZER</u></b>	<b>3</b>	<b>3.50</b>				
i.	UREA		3.50	M.Tons	1,421,640	1,389,965	102.3
ii.	AMONIA		3.50	M.Tons	270,307	419,925	64.4
iii.	DAP		3.50	M.Tons	446,066	444,637	100.3
<b>12.</b>	<b><u>PAINTS &amp; VARNISH</u></b>	<b>9</b>	<b>0.32</b>				
i.	PAINTS		0.32	M.Tons	435	738	58.9
ii.	VARNISH		0.32	"000" Liters.	1,478	2,689	55.0
<b>13.</b>	<b><u>SOAP</u></b>	<b>38</b>	<b>1.66</b>				
i.	WASHING SOAP		1.66	M.Tons	36,343	28,258	128.6
ii.	DETERGENT POWDER		1.66	M.Tons	86,645	85,594	101.2



Sr. No.	Industrial Sector/ Items	No. of Industrial Units as per CMI 2005-06	WEIGHT (2005-06)	Unit of Quantity	Production		Index of Production in 2020-21 (Jul-Dec) with 2019-20 (Jul-Dec)
					2020-21 (Jul-Dec)	2019-20 (Jul-Dec)	
iii.	TOILET SOAP		1.66	M.Tons	12,226	11,156	109.6
iv.	TOOTH PASTE		1.66	M.Tons	5,187	4,380	118.4
<b>14.</b>	<b><u>PETROLEUM PRODUCTS</u></b>	<b>2</b>	<b>9.32</b>				
i.	L.P.G		9.32	"000" Liters.	10,698	11,671	91.7
ii.	NAPHTHA SOLVENT		9.32	"000" Liters.	107,517	160,535	67.0
iii.	KEROSENE OIL		9.32	"000" Liters.	1,883	3,869	48.7
iv.	H.S.D		9.32	"000" Liters.	769,626	691,389	111.3
v.	FURNACE OIL		9.32	"000" Liters.	313,556	383,901	81.7
vi.	ASPHALT 80-100		9.32	"000" Liters.	1,360	73,183	1.9
vii.	ASPHALT 60-70		9.32	"000" Liters.	24,501	10,452	234.4
viii.	MOTOR SPRIT		9.32	"000" Liters.	122,017	87,302	139.8
ix.	JET FUEL		9.32	"000" Liters.	69,303	78,117	88.7
x.	LUBRICATING OIL		9.32	"000" Liters.	77,714	7,650	1015.9
xi.	OTHERS		0.00	"000" Liters.	131,389	219,972	59.7
<b>15.</b>	<b><u>TYRES &amp; TUBES</u></b>	<b>4</b>	<b>0.41</b>				
i.	MOTOR TYRE		0.41	Nos.	1,330,610	1,282,741	103.7
ii.	MOTOR TUBE		0.41	Nos.	144,707	288,608	50.1
<b>16.</b>	<b><u>CEMENT</u></b>	<b>11</b>	<b>3.86</b>				
i.	CEMENT		3.86	M.Tons	2,699,541	768,003	351.5
<b>17.</b>	<b><u>M.S.PRODUCTS</u></b>	<b>28</b>	<b>4.88</b>				
i.	M.S PRODUCTS		4.88	M.Tons	36,573	25,825	141.6
<b>18.</b>	<b><u>STEEL PRODUCTS</u></b>	<b>2</b>	<b>1.02</b>				
i.	STEEL PRODUCTS		1.02	M.Tons	10,104	-	0.0
<b>19.</b>	<b><u>SAFETY RAZOR BLADE</u></b>	<b>1</b>	<b>0.40</b>				
i.	SAFETY RAZOR BLAD		0.04	"000" NOs.	438,667	391,112	112.2
<b>20.</b>	<b><u>SEWING MACHINES</u></b>	<b>3</b>	<b>0.25</b>				
i.	SEWING MACHINES		0.25	Nos.	8,595	17,840	48.2
<b>21.</b>	<b><u>ELEC. APPLIANCES</u></b>	<b>3</b>	<b>2.21</b>				
i.	REFRIGERATORS		0.11	Nos.	250,318	266,707	93.9
ii.	AIR-CONDITIONERS		0.60	Nos.	35,907	17,550	204.6
iii.	DEEP FREEZERS		0.50	Nos.	7,660	4,799	159.6
iv.	WASHING MACHINES		0.50	Nos.	170,858	141,368	120.9
v.	MICROWAVE OVEN		0.50	Nos.	226,804	173,524	130.7
<b>22.</b>	<b><u>AUTOMOBILE</u></b>	<b>17</b>	<b>11.15</b>				
i.	TRUCKS		2.71	Nos.	1,557	1,729	90.1
ii.	BUSES		0.77	Nos.	281	326	86.2
iii.	LCV'S		2.50	Nos.	8,798	7,797	112.8
iv.	MOTOR CYCLES		2.06	Nos.	1,017,685	718,810	141.6
v.	TRACTORS		0.25	Nos.	23,207	16,661	139.3
vi.	CARS		0.50	Nos.	62,041	60,862	101.9
vii.	VANS & JEEPS		1.18	Nos.	4,107	2,094	196.1
viii.	THREE WHEELERS		1.18	Nos.	28,376	20,297	139.8
	<b>Grand Total</b>	<b>537</b>	<b>70.65</b>				

Table 5: Employment in Selected Large-Scale Manufacturing Sector, December-2020 Vs November-2020

Sr. No.	Industrial Sector/ Items	No. of Industrial Units as per CMI 2005-06	Total Employees		Production Worker	
			Dec:2020	Nov:2020	Dec:2020	Nov:2020
1	<u>VEGETABLE GHEE</u>	35	2,234	2,591	1,596	1,354
2	<u>SUGAR</u>	26	10,240	9,364	6,489	6,524
3	<u>TEA</u>	7	3,101	3,059	2,669	2,623
4	<u>BEVERAGES</u>	13	3,592	3,245	1,040	1,620
5	<u>COTTON TEXTILE</u>	133	53,290	53,741	41,015	41,043
6	<u>LEATHER TANNING</u>	30	6,690	6,715	5,617	5,620
7	<u>PAPER &amp; PAPER BOARD</u>	6	2,160	2,206	1,536	1,568
8	<u>PHARMACEUTICALS</u>	78	6,442	7,432	3,116	3,535
9	<u>ACID, ALKALIES &amp; SALT</u>	3	18	18	13	13
10	<u>FERTILIZER</u>	3	974	978	815	815
11	<u>PAINTS &amp; VARNISH</u>	9	103	103	50	50
12	<u>SOAP</u>	38	2,271	1,921	1,659	1,659
13	<u>PETROLEUM PRODUCTS</u>	2	431	430	333	331
14	<u>TYRES &amp; TUBES</u>	4	5,712	5,676	4,060	4,040
15	<u>CEMENT</u>	11	4,799	5,003	2,042	2,214
16	<u>STEEL PRODUCTS</u>	2	225	229	143	148
17	<u>M.S PRODUCTS</u>	28	1,083	1,087	844	851
18	<u>SAFETY RAZOR BLAD</u>	1	265	265	243	243
19	<u>SEWING MACHINES</u>	3	410	410	354	354
20	<u>ELEC. APPLIANCES</u>	3	750	750	663	663
21	<u>AUTOMOBILE</u>	17	15,832	15,760	7,486	7,515
22	<u>STORAGE BATTERIES</u>	4	1,817	1,648	1,597	1,603
	<b>Grand Total</b>	<b>456</b>	<b>122,438</b>	<b>122,630</b>	<b>83,379</b>	<b>84,383</b>

Table 6: Employment in Selected Large-Scale Manufacturing Sector, December-2020 Vs December-2019

Sr. No.	Industrial Sector/ Items	No. of Industrial Units as per CMI 2005-06	Employees		Production Worker	
			Dec:2020	Dec:2019	Dec:2020	Dec:2019
1	<u>VEGETABLE GHEE</u>	35	2,234	2,243	1,596	1,610
2	<u>SUGAR</u>	26	10,240	8,914	6,489	5,709
3	<u>TEA</u>	7	3,101	3,127	2,669	2,662
4	<u>BEVERAGES</u>	13	3,592	3,493	1,040	1,475
5	<u>COTTON TEXTILE</u>	133	53,290	54,460	41,015	42,316
6	<u>LEATHER TANNING</u>	30	6,690	6,424	5,617	5,496
7	<u>PAPER &amp; PAPER BOARD</u>	6	2,160	2,266	1,536	1,622
8	<u>PHARMACEUTICALS</u>	78	6,442	6,231	3,116	3,666
9	<u>ACID, ALKALIES &amp; SALT</u>	3	18	34	13	22
10	<u>FERTILIZER</u>	3	974	948	815	783
11	<u>PAINTS &amp; VARNISH</u>	9	103	106	50	57
12	<u>SOAP</u>	38	2,271	2,750	1,659	2,417
13	<u>PETROLEUM PRODUCTS</u>	2	431	433	333	336
14	<u>TYRES &amp; TUBES</u>	4	5,712	5,820	4,060	4,100
15	<u>CEMENT</u>	11	4,799	4,507	2,042	2,006
16	<u>STEEL PRODUCTS</u>	2	225	9,149	143	6,191
17	<u>M.S PRODUCTS</u>	28	1,083	827	844	670
18	<u>SAFETY RAZOR BLAD</u>	1	265	288	243	253
19	<u>SEWING MACHINES</u>	3	410	416	354	360
20	<u>ELECTRICAL APPARATUS</u>	3	750	750	663	663
21	<u>AUTOMOBILE</u>	17	15,832	14,869	7,486	6,825
22	<u>STORAGE BATTERIES</u>	4	1,817	2,113	1,597	1,647
	<b>Grand Total</b>	<b>456</b>	<b>122,438</b>	<b>130,169</b>	<b>83,379</b>	<b>90,886</b>

*Table 7: Average Monthly Employment in Selected Large Scale Manufacturing Sector,  
2020-21 (Jul to Dec) Vs 2019-20 (Jul to Dec)*

Sr. No.	Industrial Sector/ Items	No. of Industrial Units as per CMI 2005-06	Average Monthly Total Employment		Average Monthly Production Worker	
			(Jul-Dec) 2020-21	(Jul-Dec) 2019-20	(Jul-Dec) 2020-21	(Jul-Dec) 2019-20
1	<u>VEGETABLE GHEE</u>	35	2,583	2,223	1,387	1,630
2	<u>SUGAR</u>	26	7,348	8,534	5,776	5,287
3	<u>TEA</u>	7	3,089	3,115	2,643	1,873
4	<u>BEVERAGES</u>	13	3,247	2,776	1,218	943
5	<u>COTTON TEXTILE</u>	133	53,525	54,825	41,134	42,777
6	<u>LEATHER TANNING</u>	30	6,722	6,639	5,630	5,573
7	<u>PAPER &amp; PAPER BOARD</u>	6	2,171	2,257	1,546	1,644
8	<u>PHARMACEUTICALS</u>	78	6,568	6,191	3,155	3,347
9	<u>ACID, ALKALIES &amp; SALT</u>	3	18	34	13	22
10	<u>FERTILIZER</u>	3	981	963	814	797
11	<u>PAINTS &amp; VARNISH</u>	9	105	106	51	57
12	<u>SOAP</u>	38	2,015	2,750	1,669	2,417
13	<u>PETROLEUM PRODUCTS</u>	2	432	433	334	341
14	<u>TYRES &amp; TUBES</u>	4	5,667	5,908	4,039	4,149
15	<u>CEMENT</u>	11	5,083	4,661	2,245	1,973
16	<u>STEEL PRODUCTS</u>	1	153	9,392	98	6,370
17	<u>M.S PRODUCTS</u>	28	1,081	827	840	670
18	<u>SAFETY RAZOR BLAD</u>	1	273	288	244	255
19	<u>SEWING MACHINES</u>	3	410	416	354	360
20	<u>ELECTRICAL APPARATUS</u>	3	750	750	663	663
21	<u>AUTOMOBILE</u>	17	15,881	15,057	7,551	6,893
22	<u>STORAGE BATTERIES</u>	4	1,713	2,129	1,622	1,654
	<b>Grand Total</b>	<b>455</b>	<b>119,813</b>	<b>130,274</b>	<b>83,023</b>	<b>89,695</b>

## Annexure – A Proforma/ Questionnaire



### GOVERNMENT OF SINDH PLANNING & DEVELOPMENT DEPARTMENT BUREAU OF STATISTICS

[www.sindhbos.gov.pk](http://www.sindhbos.gov.pk)

Street-13, Block-8, Kehkashan Clifton, Karachi-75600, P.O.Box# 3879



021-99251259



021-35296415



[m.kazimjafri@hotmail.com](mailto:m.kazimjafri@hotmail.com)

The information supplied will be kept strictly confidential and will be used for statistical purpose only.	REPORT FOR	
	MONTH	YEAR

#### MONTHLY SURVEY OF INDUSTRIAL PRODUCTION AND EMPLOYMENT IN SINDH.

INDUSTRY CODE

--	--	--	--	--

Estb: Code

--	--	--	--

LOCATION CODE

--	--

#### PART-I GENERAL PARTICULARS

- i) Name and Address of the Establishment \_\_\_\_\_
- ii) Name, Designation, Telephone, Cell and \_\_\_\_\_
- Fax# of the person to be contacted. \_\_\_\_\_
- iii) Website and E-mail Address \_\_\_\_\_

#### PART-II PRODUCTION DATA

S.No	Major Items of Production	Code	Unit of Quantity	Code	Previous Month	Current Month	Reasons of Growth/ Decline

#### PART-III WORKING DAYS AND EMPLOYMENT

- i) No. of days establishment worked \_\_\_\_\_
- ii) No. of Production workers. Male \_\_\_\_\_ Female \_\_\_\_\_ Total \_\_\_\_\_
- iii) No. of Non production workers Male \_\_\_\_\_ Female \_\_\_\_\_ Total \_\_\_\_\_
- TOTAL ( ii + iii )** Male \_\_\_\_\_ Female \_\_\_\_\_ Total \_\_\_\_\_

**Note:** Production Workers mean those who are directly associated with production. It includes those engaged in manufacturing, assembling packing repairing etc. Working Supervisor should also be included, Non production worker mean those who are not directly associated with production it includes Administrative Clerical and Services Staff like Chowkidar, Driver and Sweeper.

Signature \_\_\_\_\_  
Designation \_\_\_\_\_  
Date \_\_\_\_\_

## **Annexure – B    Important Definitions**

### **Large Scale Manufacturing Industries**

Establishments where 10 or more employees are working are called large Scale Manufacturing Industries.

### **Employees**

Employees mean all persons whether part time or full time who work in the establishments and receive remuneration in cash or in kind. Working proprietors, unpaid family workers and home workers are excluded from the category of employee. There are two types of employees Production Workers and Non-Production Workers.

- **Production Workers**

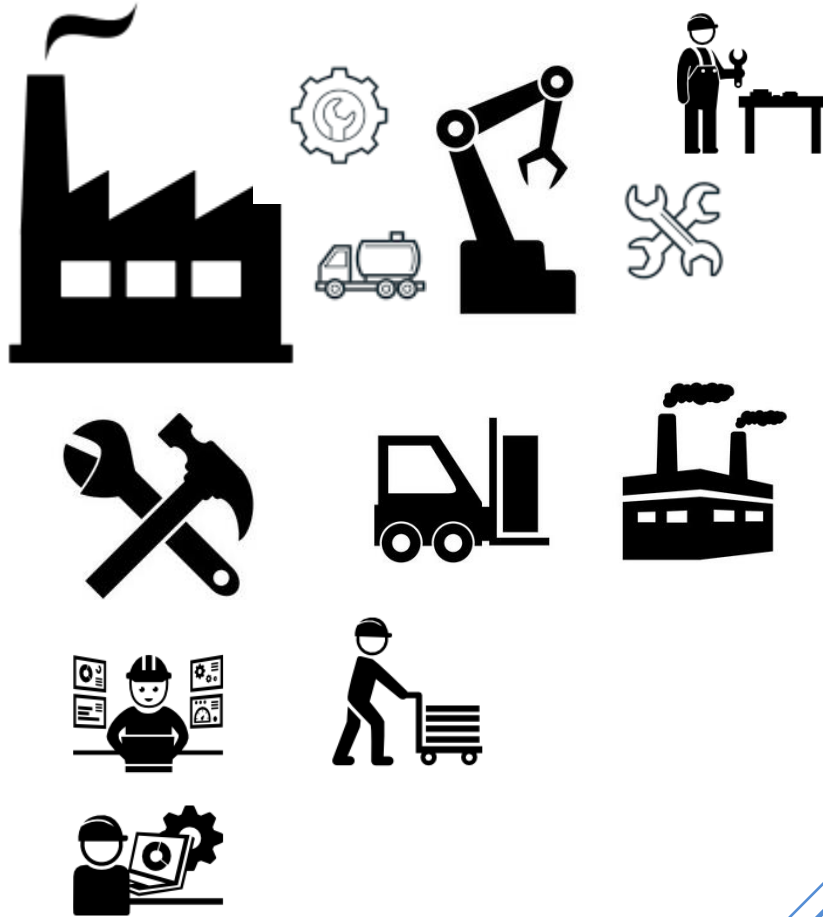
Are engaged in work directly associated with production like manufacturing, assembling, packing, repairing etc. Working supervisors and persons engaged for repairs and maintenance are also included.

- **Non-Production Workers**

Include administrative and professional employees, white-collar office employees, drivers, watchmen/guards, peons, sweepers, office boys, etc.

## **Annexure – C      Data Users**

- Ministry of Industries & Production, Government of Pakistan.
- Planning & Development Department, Government of Sindh.
- Pakistan Bureau of Statistics, Government of Pakistan.
- State Bank of Pakistan.
- Provincial Bureaus of Statistics, Punjab, KPK and Baluchistan.
- Research & Training Wing, Planning & Development Department, Government of Sindh.



(Industries Section)  
Bureau of Statistics  
Planning & Development  
Department  
Government of Sindh  
[m.kazimjafri@hotmail.com](mailto:m.kazimjafri@hotmail.com)

ST:13 Block-8 Kehkashan Clifton, Ch. Kahliqz-zaman road, Karachi  
Ph. 021-99251259, Email: [ddindustries.sindhbos@gmail.com](mailto:ddindustries.sindhbos@gmail.com)  
[www.sindhbos.gov.pk](http://www.sindhbos.gov.pk)