

MONTHLY SURVEY OF INDUSTRIAL PRODUCTION & EMPLOYMENT IN SINDH

February, 2020

Industries Section, BOS



**BUREAU OF STATISTICS
PLANNING & DEVELOPMENT DEPARTMENT
GOVERNMENT OF SINDH**

FOR OFFICIAL USE ONLY

Sindh Monthly Survey of Industrial Production & Employment (MIPE) February, 2020



Bureau of Statistics
Planning & Development Department
Government of Sindh
www.sindhbos.gov.pk
ddindustries.sindhbos.gov.pk

ST:13 Block-8 Kehkashan Clifton, Ch. Kahliqz-zaman road, Karachi Ph. 021-99251259

Preface

Monthly Survey of Industrial Production and Employment (MIPE) is being conducted/published by Sindh Bureau of Statistics on regular basis since 1970s. This report provides important statistics in respect of industrial production & employment of large Scale Manufacturing (LSM) industries in Sindh.

This report contains information on 61 items manufactured in 22 selected large scale industrial sectors covering 535 industrial establishments (selection on the basis of CMI 2005-06). These industries account for 69.6% of total value added of large scale manufacturing sector in Sindh.

MIPE Report provides information regarding General Index and Quantum Index of Manufacturing (QIM) to base period 2005-06, and analytical analysis on the current status of production and employment in manufacturing sector.

All the efforts are made to improve the industrial statistics and hope this report would prove useful to policy makers, planners, researchers and other data users. Suggestion/recommendations from the users will always be welcomed and appreciated.

Pervaiz Ahmed Chandio
Director General
Bureau of Statistics
Planning & Development Department
Government of Sindh

Contents

PREFACE	2
CONTENTS	3
LIST OF TABLES	4
LIST OF FIGURES	4
LIST OF EQUATIONS	4
MIPE TEAM (INDUSTRIES SECTION)	5
1. INTRODUCTION	6
2. QUESTIONNAIRE/ PROFORMA	7
3. METHODOLOGY	7
4. EDITING	7
5. QUANTUM INDEX OF MANUFACTURING (QIM)	8
6. REPORT ANALYSIS	9
7. DATA TABLES	11
ANNEXURE – A: PROFORMA/ QUESTIONNAIRE	20
ANNEXURE – B: IMPORTANT DEFINITIONS	21
ANNEXURE – C: DATA USERS	22

List of Tables

TABLE 1: SERIES OF QUANTUM INDEX OF MANUFACTURING (QIM) AT (2005-06=100)	9
TABLE 2: PRODUCTION OF SELECTED ITEMS PERTAINING TO LARGE-SCALE MANUFACTURING SECTOR, FEBRUARY-2020 Vs JANUARY-2020	11
TABLE 3: PRODUCTION OF SELECTED ITEMS PERTAINING TO LARGE-SCALE MANUFACTURING SECTOR, FEBRUARY-2020 Vs FEBRUARY-2019	13
TABLE 4: CUMULATIVE PRODUCTION OF SELECTED ITEMS PERTAINING TO LARGE-SCALE MANUFACTURING SECTOR,.....	15
TABLE 5: EMPLOYMENT IN SELECTED LARGE-SCALE MANUFACTURING SECTOR, FEBRUARY-2020 Vs JANUARY-2020	17
TABLE 6: EMPLOYMENT IN SELECTED LARGE-SCALE MANUFACTURING SECTOR, FEBRUARY-2020Vs FEBRUARY-2019	18
TABLE 7: AVERAGE MONTHLY EMPLOYMENT IN SELECTED LARGE SCALE MANUFACTURING SECTOR,	19

List of Figures

FIGURE 1: TREND OF QUANTUM INDEX OF LARGE SCALE MANUFACTURING INDUSTRIES AT BASE YEAR 2005-06.....	10
FIGURE 2: TREND OF AVERAGE MONTHLY EMPLOYMENT IN LARGE SCALE MANUFACTURING INDUSTRIES.....	10

List of Equations

EQUATION 1 LASPAYER'S INDEX	8
-----------------------------------	---

Team Lead:

Muhammad Kazim Jafri | Deputy Director

Team Members:

Ms. Rukhsana Aziz | Statistical Officer

Ms. FaaezaAtiq | Statistical Officer

Support in Data Collection and Compilation:

Mr. Muhammad YounusBukhari | Jr. Stenographer

Mr. Muhammad AkramBhatti | Statistical Computer

1. Introduction

Industrial Statistical is very essential tool to track industrial growth and implementation of policies in right directions. This sector has great importance for economic development of country. The composition of Pakistan's economy, Agriculture Sector is 20%, Industries Sector is 21% and Services Sector is 59% (PBS).

From the share of industrial sector 13.6% are manufacturing and more specifically 11% is Large Scale Manufacturing (LSM) Sector. The role of Sindh province in the Large Scale Manufacturing is very vital. According to Karachi Chamber of Commerce and Industry (KCCI), Karachi is the largest metropolitan city of Pakistan and produces 15% with an annual Gross Domestic Product (GDP). From Sindh Business Register (SBR) of Manufacturing Industries recently developed by Sindh Bureau of Statistics, Planning & Development Department around 67% establishments/factories are located in Karachi and 33% are in other districts to Sindh.

It is historical fact that countries with strong industrial sector have showed more economic growth and development industrial sector have shown improvement in national income and promoted living standard of population. A fresh industrial policy of Pakistan is also promotes employment, value-added exports and import substitution

For the timely and quality industrial statistics Bureau of Statistics, Sindh Planning & Development Department conducts Monthly Survey of Industrial Production and Employment (MIPE). This survey collects information on 61 items manufactured in 22 selected large scale Industrial sectors from 535 establishments/ factories in Sindh. The sample of 535 establishments / factories was drawn from the last Census of Manufacturing Industries (CMI), 2005-06. These industries account for 69.6% of total value added in terms of production during 2005-06, Census of Manufacturing Industries. In addition to collection, compilation, tabulation and processing of manufacturing data, Bureau of Statistics also computes monthly Quantum Index of Manufacturing by using the weights of production. The quantum index is an essential indicator to gauge to aggregate monthly production of province.

2. Questionnaire/ Proforma

A questionnaire/ Proforma is a research instrument consisting of a series of questions and other prompts for the purpose of gathering information from respondents. A pre-tested questionnaire is used for the data collection of industrial inputs related to employment and production, attached at **Annex-A**.

3. Methodology

The basic method of data collection for Sindh MIPE is the posting/ mailing of MIPE Questionnaires. More than 70% monthly returns are received to this Bureau through mail from industrial units. The non-responding or remaining establishments are visited by the officers/ officials of this Bureau, besides this the method of emailing, fax and telephonic approach are also used for collection of monthly returns and increase the response rate.

4. Editing

All the received returns are scrutinized for accuracy and consistency with previous data by the Industries Section of this Bureau. As per *Unit Calculation Sheet* different units of similar products are converted into the reporting units. In case of huge discrepancy between current and previous returns the factory management is approached to rectify that figures. In the absence establishment's return or non-availability of concerned person the average production of last month or the last month information is repeated for equivalence.

5. Quantum Index of Manufacturing (QIM)

A quantum index is an index based on quantity units of goods such as number or weight. Sindh bureau of Statistics is computing Index on Industrial Production using 2005-06 as base year. Index Series is generated by using Laspayer's Index.

$$QIM = \frac{\sum_{i=1}^n \frac{q_{im}}{q_{i0}} w_i}{\sum_{i=1}^n w_i} \times 100$$

Equation 1 Laspayer's Index

q_{im} = Production of i^{th} item during the current month

q_{i0} = Average Production of the same i^{th} item in the base period (2005-06)

w_i = Weight of the i^{th} item in the base period (2005-06)

$\sum_{i=1}^n w_i$ = Total Weight of 22 large scale industrial sectors covering 535 establishments in the base period with respect to the total value added of all the industries covered in CMI in the base year 2005-06.

6. Report Analysis

Summary findings on the basis of Index of Industrial Production are as follows:

- Overall Production in February, 2020 is significantly increased by 18.75% as compared to last month(i.e. January, 2020)
- Overall Production in February, 2020 is significantly increased by 4.45% as compared to corresponding month of last year (i.e. February, 2019)
- Cumulative production from July to February (2019-20) is slightly increased 2.44% as the cumulative production from July to February (2018-19)
- Employment during February, 2020 is slightly increased around 1% as compared to previous month (i.e. January, 2020)
- Employment during February, 2020 is more than 8% higher than February, 2019.
- Average monthly employment during the period of July-February (2019-20) is 7.2% increased as compared to the corresponding period of July- February (2018-19)

Table 1: Series of Quantum Index of Manufacturing (QIM) at (2005-06=100)

Month/ Year	2015-16	2016-17	2017-18	2018-19	2019-20
July	255.7	284.0	327.0	290.8	259.7
August	266.0	287.7	336.4	265.5	220.9
September	274.2	281.5	330.9	311.3	266.7
October	247.0	291.4	355.7	287.0	277.0
November	283.7	317.1	343.2	273.3	280.3
December	261.7	302.8	341.5	265.2	223.7
January	297.4	286.1	374.0	321.3	263.8*
February	293.2	283.3	324.5	309.0	313.2
March	253.9	275.6	341.4	279.7	
April	250.6	276.8	338.5	258.2	
May	254.4	283.9	311.3	248.2	
June	259.0	258.1	307.4	257.6	
Average (Geometric Mean)	265.9	285.4	335.5	279.7	

*Quantum index of January is updated due to revised figure of cotton fabrics in cotton textile sector

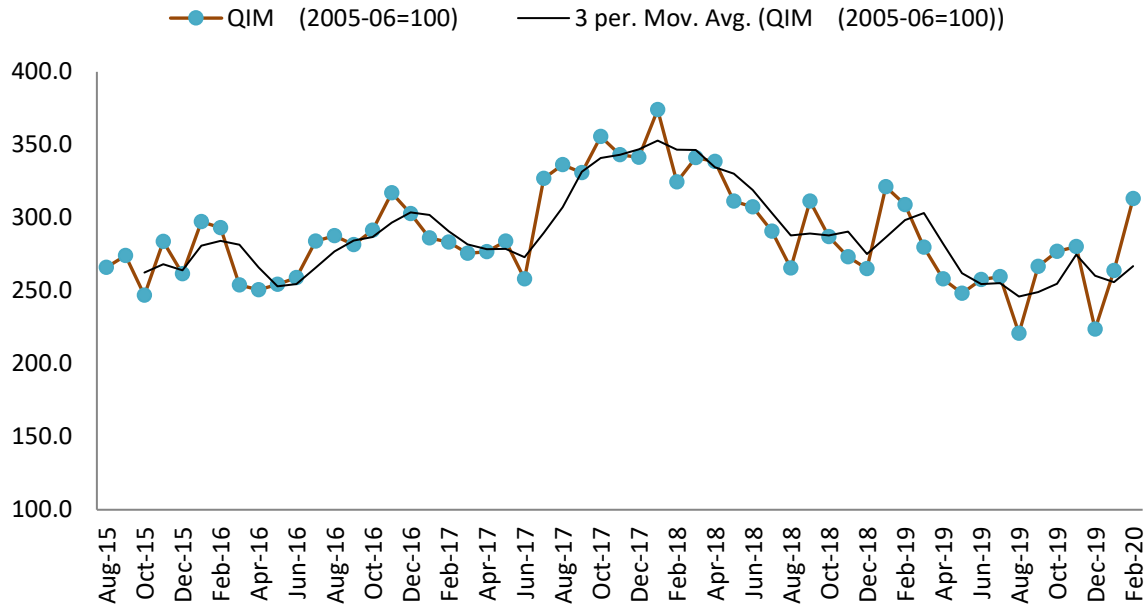


Figure 1: Trend of Quantum Index of Large Scale Manufacturing Industries at base year 2005-06

During the current month increasing trend observed in the manufacturing production index due to production of food and pharmaceutical industry. The current month's index is slightly increased as compare to corresponding month of last year (i.e. February, 2019).

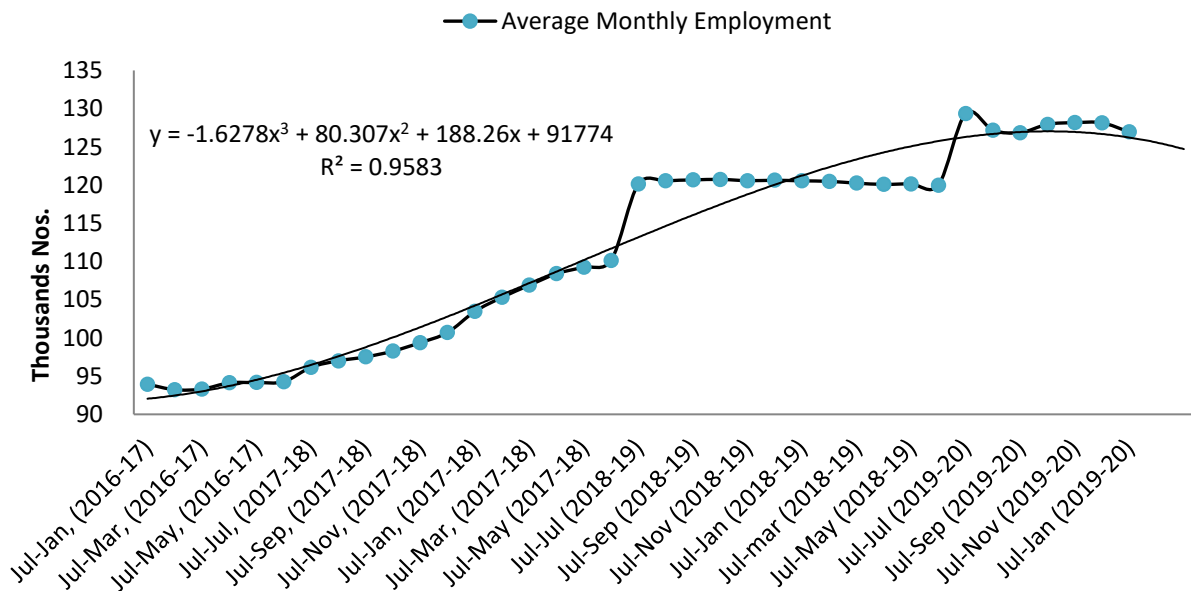


Figure 2: Trend of Average Monthly Employment in Large Scale Manufacturing Industries

Overall upward trend is observed in the employment curve of Large Scale Manufacturing industries. The fitted quadratic model with $R^2 = 96\%$ is predicting slight decline in LSM Employment in coming months.

7. Data Tables

Table 2: Production of Selected Items Pertaining to Large-Scale Manufacturing Sector, February-2020 Vs January-2020

Sr. No.	Industrial Sector/ Items	No. of Industrial Units as per CMI 2005-06	WEIGHT (2005-06)	Unit of Quantity	Production		Index of Production in Feb:2020 with Jan: 2020
					Feb:2020	Jan:2020	
1.	VEGETABLE GHEE	35	1.61				
	i. VEGETABLE GHEE		1.11	M.Tons	33,094	33,527	98.7
	ii. COOKING OIL		0.50	M.Tons	16,018	16,654	96.2
2.	SUGAR	26	4.32				
	i. SUGAR		4.32	M.Tons	619,297	630,190	98.3
3.	TEA	7	1.23				
	i. TEA		1.23	M.Tons	4,223	3,998	105.6
4.	BEVERAGES	13	0.85				
	i. BEVERAGES		0.85	"000" NOs.	96,604	85,265	113.3
	ii. WATER*		0.85	"000" NOs.	16,412	16,373	100.2
5.	COTTON TEXTILE	133	13.65				
	i. COTTON YARN		9.10	M.Tons	16,667	20,184	82.6
	ii. COTTON FABRICS		4.13	"000" Sq. M	12,202	12,000	101.7
	iii. M.M. YARN		0.42	M.Tons	495	801	61.8
6.	LEATHER TANNING	30	0.29				
	i. UPPER LEATHER		0.07	"000" Sq. M.	1,068	1,269	84.2
	ii. WET BLUE TANNED		0.22	"000" Sq. M.	112	110	101.8
7.	COTTON GINNING & PRESSING	85	3.30				
	i. C.G. & PRESSING		3.30	Bales	20,283	181,685	11.2
8.	PAPER & PAPER BOARD	6	0.01				
	i. PRINTING PAPER		0.01	M.Tons	394	413	95.4
	ii. WRITTEN PAPER		0.01	M.Tons	358	333	107.5
	iii. PACKING & OTHER PAPER		0.01	M.Tons	1,215	1,630	74.5
	iv. ADVERTISING MATERIAL*		0.01	M.Tons	16	25	64.0
9.	PHARMACEUTICALS	78	6.37				
	i. TABLETS		1.67	"000" NOs.	2,142,345	2,061,597	103.9
	ii. LIQUIDS/SYRUPS		1.97	"000" Liters.	7,311	7,212	101.4
	iii. CAPSULES		1.36	"000" NOs.	329,312	247,926	132.8
	iv. INJECTIONS		1.22	"000" NOs.	116,289	94,445	123.1
	v. OINTMENT		0.15	KGs.	237,514	227,149	104.6
10.	ACID, ALKALIES & SALT	3	0.04				
	i. SULPHURIC ACID		0.04	M.Tons	2,378	1,626	146.2
11.	FERTILIZER	3	3.50				
	i. UREA		3.50	M.Tons	217,526	193,766	112.3
	ii. AMONIA		3.50	M.Tons	28,742	5,411	531.2
	iii. DAP*		3.50	M.Tons	27,406	38,754	70.7
12.	PAINTS & VARNISH	9	0.32				
	i. PAINTS		0.32	M.Tons	119	122	97.5
	ii. VARNISH		0.32	"000" Liters.	484	411	117.8

Sr. No.	Industrial Sector/ Items	No. of Industrial Units as per CMI 2005-06	WEIGHT (2005-06)	Unit of Quantity	Production		Index of Production in Feb:2020 with Jan: 2020
					Feb:2020	Jan:2020	
13.	SOAP	38	1.66				
	i. WASHING SOAP		1.66	M.Tons	5,080	4,595	110.6
	ii. DETERGENT POWDER		1.66	M.Tons	13,702	13,705	100.0
	iii. TOILET SOAP		1.66	M.Tons	1,882	2,028	92.8
	iv. TOOTH PASTE*		1.66	M.Tons	786	802	98.0
14.	PETROLEUM PRODUCTS	2	9.32				
	i. L.P.G		9.32	"000" Liters.	2,431	1,301	186.8
	ii. NAPHTHA SOLVENT		9.32	"000" Liters.	21,724	10,125	214.6
	iii. KEROSENE OIL		9.32	"000" Liters.	1,151	702	164.0
	iv. H.S.D		9.32	"000" Liters.	76,299	74,033	103.1
	v. FURNACE OIL		9.32	"000" Liters.	54,951	40,924	134.3
	vi. ASPHALT 80-100		9.32	"000" Liters.	754	3,452	21.8
	vii. ASPHALT 60-70		9.32	"000" Liters.	5,684	-	
	viii. MOTOR SPRIT		9.32	"000" Liters.	16,303	406	4015.5
	ix. JET FUEL		9.32	"000" Liters.	13,456	5,098	264.0
	x. LUBRICATING OIL		9.32	"000" Liters.	16,490	-	
	xi. OTHERS*		0.00	"000" Liters.	69,028	26,087	264.6
15.	TYRES & TUBES	4	0.41				
	i. MOTOR TYRE		0.41	Nos.	209,826	210,810	99.5
	ii. MOTOR TUBE		0.41	Nos.	58,071	51,446	112.9
16.	CEMENT	11	3.86				
	i. CEMENT		3.86	M.Tons	147,805	138,280	106.9
17.	M.S.PRODUCTS	28	4.88				
	i. M.S PRODUCTS		4.88	M.Tons	4,878	4,491	108.6
18.	SAFETY RAZOR BLADE	1	0.40				
	i. SAFETY RAZOR BLAD		0.04	"000" NOs.	57,782	58,404	98.9
19.	SEWING MACHINES	3	0.25				
	i. SEWING MACHINES		0.25	Nos.	2,645	2,700	98.0
20.	ELEC. APPLIANCES	3	2.21				
	i. REFRIGERATORS		0.11	Nos.	47,968	44,613	107.5
	ii. AIR-CONDITIONERS		0.60	Nos.	12,651	11,025	114.7
	iii. DEEP FREEZERS		0.50	Nos.	2,333	290	804.5
	iv. WASHING MACHINES		0.50	Nos.	16,562	28,540	58.0
	v. MICROWAVE OVEN*		0.50	Nos.	34,529	39,274	87.9
21.	AUTOMOBILE	17	11.15				
	i. TRUCKS		2.71	Nos.	424	321	132.1
	ii. BUSES		0.77	Nos.	26	38	68.4
	iii. LCV'S		2.50	Nos.	2,207	761	290.0
	iv. MOTOR CYCLES		2.06	Nos.	131,745	138,253	95.3
	v. TRACTORS		0.25	Nos.	4,235	683	620.1
	vi. CARS		0.50	Nos.	17,576	11,475	153.2
	vii. VANS & JEEPS*		1.18	Nos.	630	386	163.2
	viii. THREE WHEELERS*		1.18	Nos.	5,661	1,687	335.6
	Grand Total	535	69.63				

*New items are reporting from selected companies added since July (2019-20)

Table 3: Production of Selected Items Pertaining to Large-Scale Manufacturing Sector, February-2020 Vs February-2019

Sr. No.	Industrial Sector/ Items	No. of Industrial Units as per CMI 2005-06	WEIGHT (2005-06)	Unit of Quantity	Production		Index of Production in Feb:2020 with Feb:2019
					Feb:2020	Feb:2019	
1.	<u>VEGETABLE GHEE</u>	35	1.61				
i.	VEGETABLE GHEE		1.11	M.Tons	33,094	34,799	95.1
ii.	COOKING OIL		0.50	M.Tons	16,018	16,496	97.1
2.	<u>SUGAR</u>	26	4.32				
i.	SUGAR		4.32	M.Tons	619,297	648,794	95.5
3.	<u>TEA</u>	7	1.23				
i.	TEA		1.23	M.Tons	4,223	7,701	54.8
4.	<u>BEVERAGES</u>	13	0.85				
i.	BEVERAGES		0.85	"000" NOs.	96,604	74,601	129.5
ii.	WATER*		0.85	"000" NOs.	16,412		
5.	<u>COTTON TEXTILE</u>	133	13.65				
i.	COTTON YARN		9.10	M.Tons	16,667	24,195	68.9
ii.	COTTON FABRICS		4.13	"000" Sq. M	12,202	12,008	101.6
iii.	M.M.YARN		0.42	M.Tons	495	1,544	32.1
6.	<u>LEATHER TANNING</u>	30	0.29				
i.	UPPER LEATHER		0.07	"000" Sq. M.	1,068	1,501	71.2
ii.	WET BLUE TANNED		0.22	"000" Sq. M.	112	112	100.0
7.	<u>COTTON GINNING & PRESSING</u>	85	3.30				
i.	C.G.& PRESSING		3.30	Bales	20,283	35,820	56.6
8.	<u>PAPER & PAPER BOARD</u>	6	0.01				
i.	PRINTING PAPER		0.01	M.Tons	394	269	146.5
ii.	WRITTEN PAPER		0.01	M.Tons	358	290	123.4
iii.	PACKING & OTHER PAPER		0.01	M.Tons	1,215	1,631	74.5
iv.	ADVERTISING MATERIAL*		0.01	M.Tons	16		
9.	<u>PHARMACEUTICALS</u>	78	6.37				
i.	TABLETS		1.67	"000" NOs.	2,142,345	2,254,268	95.0
ii.	LIQUIDS/SYRUPS		1.97	"000" Liters.	7,311	7,635	95.8
iii.	CAPSULS		1.36	"000" NOs.	329,312	347,755	94.7
iv.	INJECTIONS		1.22	"000" NOs.	116,289	111,041	104.7
v.	OINTMENT		0.15	KGs.	237,514	242,296	98.0
10.	<u>ACID, ALKALIES & SALT</u>	3	0.04				
i.	SULPHURIC ACID		0.04	M.Tons	2,378	2,536	93.8
11.	<u>FERTILIZER</u>	3	3.50				
i.	UREA		3.50	M.Tons	217,526	167,788	129.6
ii.	AMONIA		3.50	M.Tons	28,742	6,189	464.4
iii.	DAP*		3.50	M.Tons	27,406		
12.	<u>PAINTS & VARNISH</u>	9	0.32				
i.	PAINTS		0.32	M.Tons	119	112	106.3
ii.	VARNISH		0.32	"000" Liters.	484	504	96.0
13.	<u>SOAP</u>	38	1.66				
i.	WASHING SOAP		1.66	M.Tons	5,080	4,801	105.8
ii.	DETERGENT POWDER		1.66	M.Tons	13,702	14,725	93.1
iii.	TOILET SOAP		1.66	M.Tons	1,882	1,297	145.1
iv.	TOOTH PASTE*		1.66	M.Tons	786		

Sr. No.	Industrial Sector/ Items	No. of Industrial Units as per CMI 2005-06	WEIGHT (2005-06)	Unit of Quantity	Production		Index of Production in Feb:2020 with Feb:2019
					Feb:2020	Feb:2019	
14.	<u>PETROLEUM PRODUCTS</u>	2	9.32				
i.	L.P.G		9.32	"000" Liters.	2,431	2,982	81.5
ii.	NAPHTHA SOLVENT		9.32	"000" Liters.	21,724	27,321	79.5
iii.	KEROSENE OIL		9.32	"000" Liters.	1,151	1,290	89.2
iv.	H.S.D		9.32	"000" Liters.	76,299	110,339	69.1
v.	FURNACE OIL		9.32	"000" Liters.	54,951	75,184	73.1
vi.	ASPHALT 80-100		9.32	"000" Liters.	754	11,520	6.5
vii.	ASPHALT 60-70		9.32	"000" Liters.	5,684	-	
viii.	MOTOR SPRIT		9.32	"000" Liters.	16,303	20,070	81.2
ix.	JET FUEL		9.32	"000" Liters.	13,456	12,545	107.3
x.	LUBRICATING OIL		9.32	"000" Liters.	16,490	-	
xi.	OTHERS*		0.00	"000" Liters.	69,028	-	
15.	<u>TYRES & TUBES</u>	4	0.41				
i.	MOTOR TYRE		0.41	Nos.	209,826	200,137	104.8
ii.	MOTOR TUBE		0.41	Nos.	58,071	60,807	95.5
16.	<u>CEMENT</u>	11	3.86				
i.	CEMENT		3.86	M.Tons	147,805	96,201	153.6
17.	<u>M.S.PRODUCTS</u>	28	4.88				
i.	M.S PRODUCTS		4.88	M.Tons	4,878	4,706	103.7
18.	<u>SAFETY RAZOR BLADE</u>	1	0.40				
i.	SAFETY RAZOR BLAD		0.04	"000" NOs.	57,782	75,684	76.3
19.	<u>SEWING MACHINES</u>	3	0.25				
i.	SEWING MACHINES		0.25	Nos.	2,645	2,535	104.3
20.	<u>ELEC. APPLIANCES</u>	3	2.21				
i.	REFRIGERATORS		0.11	Nos.	47,968	50,276	95.4
ii.	AIR-CONDITIONERS		0.60	Nos.	12,651	22,812	55.5
iii.	DEEP FREEZERS		0.50	Nos.	2,333	1,464	159.4
iv.	WASHING MACHINES		0.50	Nos.	16,562	18,089	91.6
v.	MICROWAVE OVEN*		0.50	Nos.	34,529		
21.	<u>AUTOMOBILE</u>	17	11.15				
i.	TRUCKS		2.71	Nos.	424	424	100.0
ii.	BUSES		0.77	Nos.	26	26	100.0
iii.	LCV'S		2.50	Nos.	2,207	1,802	122.5
iv.	MOTOR CYCLES		2.06	Nos.	131,745	133,806	98.5
v.	TRACTORS		0.25	Nos.	4,235	4,235	100.0
vi.	CARS		0.50	Nos.	17,576	17,576	100.0
vii.	VANS & JEEPS*		1.18	Nos.	630		
viii.	THREE WHEELERS*		1.18	Nos.	5,661		
	Grand Total	535	69.63				

*New items are reporting from selected companies added since July (2019-20)

Table 4: Cumulative Production of Selected Items Pertaining to Large-Scale Manufacturing Sector, 2019-20 (Jul to Feb) Vs 2018-19 (Jul to Feb)

Sr. No.	Industrial Sector/ Items	No. of Industrial Units as per CMI 2005-06	WEIGHT (2005-06)	Unit of Quantity	Production		Index of Production in 2019-20 (Jul-Feb) with 2018-19 (Jul-Feb)
					2019-20 (Jul-Feb)	2018-19 (Jul-Feb)	
1.	<u>VEGETABLE GHEE</u>	35	1.61				
i.	VEGETABLE GHEE		1.11	M.Tons	272,531	273,646	99.6
ii.	COOKING OIL		0.50	M.Tons	123,459	128,057	96.4
2.	<u>SUGAR</u>	26	4.32				
i.	SUGAR		4.32	M.Tons	1,317,227	1,450,617	90.8
3.	<u>TEA</u>	7	1.23				
i.	TEA		1.23	M.Tons	35,702	58,024	61.5
4.	<u>BEVERAGES</u>	13	0.85				
i.	BEVERAGES		0.85	"000" NOs.	670,882	810,232	82.8
ii.	WATER*		0.85	"000" NOs.	124,953		
5.	<u>COTTON TEXTILE</u>	133	13.65				
i.	COTTON YARN		9.10	M.Tons	145,699	169,955	85.7
ii.	COTTON FABRICS		4.13	"000" Sq. M	85,231	102,200	83.4
iii.	M.M.YARN		0.42	M.Tons	7,327	18,270	40.1
6.	<u>LEATHER TANNING</u>	30	0.29				
i.	UPPER LEATHER		0.07	"000" Sq. M.	9,455	9,696	97.5
ii.	WET BLUE TANNED		0.22	"000" Sq. M.	857	830	103.3
7.	<u>COTTON GINNING & PRESSING</u>	85	3.30				
i.	C.G.& PRESSING		3.30	Bales	3,471,528	4,147,267	83.7
8.	<u>PAPER & PAPER BOARD</u>	6	0.01				
i.	PRINTING PAPER		0.01	M.Tons	3,066	2,459	124.7
ii.	WRITTEN PAPER		0.01	M.Tons	2,390	2,419	98.8
iii.	PACKING & OTHER PAPER		0.01	M.Tons	12,658	14,412	87.8
iv.	ADVERTISING MATERIAL*		0.01	M.Tons	191		
9.	<u>PHARMACEUTICALS</u>	78	6.37				
i.	TABLETS		1.67	"000" NOs.	16,370,783	16,706,600	98.0
ii.	LIQUIDS/SYRUPS		1.97	"000" Liters.	50,784	60,198	84.4
iii.	CAPSULS		1.36	"000" NOs.	2,151,821	1,989,835	108.1
iv.	INJECTIONS		1.22	"000" NOs.	719,420	710,310	101.3
v.	OINTMENT		0.15	KGs.	1,775,447	1,848,353	96.1
10.	<u>ACID, ALKALIES & SALT</u>	3	0.04				
i.	SULPHURIC ACID		0.04	M.Tons	19,943	19,898	100.2
11.	<u>FERTILIZER</u>	3	3.50				
i.	UREA		3.50	M.Tons	1,801,257	1,655,342	108.8
ii.	AMONIA		3.50	M.Tons	454,078	279,067	162.7
iii.	DAP*		3.50	M.Tons	510,797		
12.	<u>PAINTS & VARNISH</u>	9	0.32				
i.	PAINTS		0.32	M.Tons	979	907	107.9
ii.	VARNISH		0.32	"000" Liters.	3,584	3,919	91.5
13.	<u>SOAP</u>	38	1.66				
i.	WASHING SOAP		1.66	M.Tons	37,933	35,577	106.6
ii.	DETERGENT POWDER		1.66	M.Tons	113,001	113,521	99.5

Sr. No.	Industrial Sector/ Items	No. of Industrial Units as per CMI 2005-06	WEIGHT (2005-06)	Unit of Quantity	Production		Index of Production in 2019-20 (Jul-Feb) with 2018-19 (Jul-Feb)
					2019-20 (Jul-Feb)	2018-19 (Jul-Feb)	
iii.	TOILET SOAP		1.66	M.Tons	15,066	16,711	90.2
iv.	TOOTH PASTE*		1.66	M.Tons	5,968		
14.	<u>PETROLEUM PRODUCTS</u>	2	9.32				
i.	L.P.G		9.32	"000" Liters.	15,403	20,625	74.7
ii.	NAPHTHA SOLVENT		9.32	"000" Liters.	192,384	201,629	95.4
iii.	KEROSENE OIL		9.32	"000" Liters.	5,722	5,735	99.8
iv.	H.S.D		9.32	"000" Liters.	841,721	933,513	90.2
v.	FURNACE OIL		9.32	"000" Liters.	479,775	567,261	84.6
vi.	ASPHALT 80-100		9.32	"000" Liters.	114,861	59,678	192.5
vii.	ASPHALT 60-70		9.32	"000" Liters.	20,138	25,353	79.4
viii.	MOTOR SPRIT		9.32	"000" Liters.	104,576	211,492	49.4
ix.	JET FUEL		9.32	"000" Liters.	91,979	113,574	81.0
x.	LUBRICATING OIL		9.32	"000" Liters.	29,238	49,842	58.7
xi.	OTHERS*		0.00	"000" Liters.	288,999	1,186	
15.	<u>TYRES & TUBES</u>	4	0.41				
i.	MOTOR TYRE		0.41	Nos.	1,703,377	1,739,473	97.9
ii.	MOTOR TUBE		0.41	Nos.	418,125	454,612	92.0
16.	<u>CEMENT</u>	11	3.86				
i.	CEMENT		3.86	M.Tons	1,024,746	882,499	116.1
17.	<u>M.S.PRODUCTS</u>	28	4.88				
i.	M.S PRODUCTS		4.88	M.Tons	35,194	30,371	115.9
18.	<u>SAFETY RAZOR BLADE</u>	1	0.40				
i.	SAFETY RAZOR BLAD		0.04	"000" NOs.	507,298	554,569	91.5
19.	<u>SEWING MACHINES</u>	3	0.25				
i.	SEWING MACHINES		0.25	Nos.	23,185	21,641	107.1
20.	<u>ELEC. APPLIANCES</u>	3	2.21				
i.	REFRIGERATORS		0.11	Nos.	359,288	352,820	101.8
ii.	AIR-CONDITIONERS		0.60	Nos.	41,226	105,246	39.2
iii.	DEEP FREEZERS		0.50	Nos.	7,422	9,783	75.9
iv.	WASHING MACHINES		0.50	Nos.	186,470	128,427	145.2
v.	MICROWAVE OVEN*		0.50	Nos.	247,327		
21.	<u>AUTOMOBILE</u>	17	11.15				
i.	TRUCKS		2.71	Nos.	2,474	4,679	52.9
ii.	BUSES		0.77	Nos.	390	602	64.8
iii.	LCV'S		2.50	Nos.	10,765	17,363	62.0
iv.	MOTOR CYCLES		2.06	Nos.	1,028,808	1,161,897	88.5
v.	TRACTORS		0.25	Nos.	21,579	31,879	67.7
vi.	CARS		0.50	Nos.	89,913	150,753	59.6
vii.	VANS & JEEPS*		1.18	Nos.	3,110		
viii.	THREE WHEELERS*		1.18	Nos.	27,645		
	Grand Total	535	69.63				

*New items are reporting from selected companies added since July (2019-20)

Table 5: Employment in Selected Large-Scale Manufacturing Sector, February-2020 Vs January-2020

Sr. No.	Industrial Sector/ Items	No. of Industrial Units as per CMI 2005-06	Total Employees		Production Worker	
			Feb:2020	Jan:2020	Feb:2020	Jan:2020
1	<u>VEGETABLE GHEE</u>	35	2,258	2,258	1,574	1,559
2	<u>SUGAR</u>	26	10,494	9,309	6,283	6,067
3	<u>TEA</u>	7	3,117	3,103	2,655	2,644
4	<u>BEVERAGES</u>	13	3,395	3,427	1,400	1,461
5	<u>COTTON TEXTILE</u>	133	53,452	53,386	41,202	41,194
6	<u>LEATHER TANNING</u>	30	6,344	6,430	5,605	5,364
7	<u>PAPER & PAPER BOARD</u>	6	2,246	2,256	1,600	1,610
8	<u>PHARMACEUTICALS</u>	78	6,271	6,229	3,659	3,656
9	<u>ACID, ALKALIES & SALT</u>	3	34	34	22	22
10	<u>FERTILIZER</u>	3	986	948	821	786
11	<u>PAINTS & VARNISH</u>	9	103	106	54	57
12	<u>SOAP</u>	38	2,086	2,086	1,817	1,817
13	<u>PETROLEUM PRODUCTS</u>	2	435	434	338	336
14	<u>TYRES & TUBES</u>	4	5,724	5,724	4,044	4,044
15	<u>CEMENT</u>	11	4,378	4,402	1,868	1,877
16	<u>STEEL PRODUCTS</u>	1	9,149	9,149	6,191	6,191
17	<u>M.S PRODUCTS</u>	28	827	827	670	670
18	<u>SAFETY RAZOR BLAD</u>	1	288	288	251	251
19	<u>SEWING MACHINES</u>	3	410	416	354	360
20	<u>ELEC. APPLIANCES</u>	3	750	750	663	663
21	<u>AUTOMOBILE</u>	17	14,877	14,919	6,912	6,825
22	<u>STORAGE BATTERIES</u>	4	2,121	2,113	2,470	1,648
	Grand Total	455	129,745	128,594	90,453	89,100

Table 6: Employment in Selected Large-Scale Manufacturing Sector, February-2020Vs February-2019

Sr. No.	Industrial Sector/ Items	No. of Industrial Units as per CMI 2005-06	Employees		Production Worker	
			Feb:2020	Feb:2019	Feb:2020	Feb:2019
1	<u>VEGETABLE GHEE</u>	35	2,258	2,197	1,574	1,642
2	<u>SUGAR</u>	26	10,494	9,578	6,283	6,191
3	<u>TEA</u>	7	3,117	140	2,655	96
4	<u>BEVERAGES</u>	13	3,395	4,116	1,400	1,966
5	<u>COTTON TEXTILE</u>	133	53,452	57,446	41,202	42,921
6	<u>LEATHER TANNING</u>	30	6,344	5,697	5,605	4,836
7	<u>PAPER & PAPER BOARD</u>	6	2,246	507	1,600	433
8	<u>PHARMACEUTICALS</u>	78	6,271	9,667	3,659	6,408
9	<u>ACID, ALKALIES & SALT</u>	3	34	34	22	22
10	<u>FERTILIZER</u>	3	986	336	821	247
11	<u>PAINTS & VARNISH</u>	9	103	106	54	54
12	<u>SOAP</u>	38	2,086	3,134	1,817	2,762
13	<u>PETROLEUM PRODUCTS</u>	2	435	416	338	343
14	<u>TYRES & TUBES</u>	4	5,724	6,080	4,044	4,260
15	<u>CEMENT</u>	11	4,378	5,124	1,868	2,150
16	<u>STEEL PRODUCTS</u>	1	9,149	10,135	6,191	7,010
17	<u>M.S PRODUCTS</u>	28	827	827	670	670
18	<u>SAFETY RAZOR BLAD</u>	1	288	288	251	256
19	<u>SEWING MACHINES</u>	3	410	151	354	110
20	<u>ELECTRICAL APPARATUS</u>	3	750	750	663	663
21	<u>AUTOMOBILE</u>	17	14,877	3,294	6,912	2,583
22	<u>STORAGE BATTERIES</u>	4	2,121		2,470	
	Grand Total	455	129,745	120,023	90,453	85,623

**Table 7: Average Monthly Employment in Selected Large Scale Manufacturing Sector,
2019-20 (Jul to Feb) Vs 2018-19 (Jul to Feb)**

Sr. No.	Industrial Sector/ Items	No. of Industrial Units as per CMI 2005-06	Average Monthly Total Employment		Average Monthly Production Worker	
			(Jul-Feb) 2019-20	(Jul-Feb) 2018-19	(Jul-Feb) 2019-20	(Jul-Feb) 2018-19
1	<u>VEGETABLE GHEE</u>	35	2,232	2,417	1,614	1,817.29
2	<u>SUGAR</u>	26	8,034	9,113	5,414	5,850
3	<u>TEA</u>	7	3,114	143	2,067	99
4	<u>BEVERAGES</u>	13	2,935	4,120	1,065	1,960
5	<u>COTTON TEXTILE</u>	133	54,476	57,290	42,383	43,683
6	<u>LEATHER TANNING</u>	30	6,576	5,801	5,551	4,919
7	<u>PAPER & PAPER BOARD</u>	6	2,256	542	1,635	473
8	<u>PHARMACEUTICALS</u>	78	6,206	9,610	3,425	6,244
9	<u>ACID, ALKALIES & SALT</u>	3	34	34	22	22
10	<u>FERTILIZER</u>	3	964	342	799	252
11	<u>PAINTS & VARNISH</u>	9	106	106	56	54
12	<u>SOAP</u>	38	2,584	3,369	2,267	3,000
13	<u>PETROLEUM PRODUCTS</u>	2	434	419	340	346
14	<u>TYRES & TUBES</u>	4	5,862	6,133	4,123	4,272
15	<u>CEMENT</u>	11	4,593	5,177	1,948	2,180
16	<u>STEEL PRODUCTS</u>	1	9,331	10,325	6,325	7,186
17	<u>M.S PRODUCTS</u>	28	827	954	670	785
18	<u>SAFETY RAZOR BLAD</u>	1	288	288	254	258
19	<u>SEWING MACHINES</u>	3	415	149	359	108
20	<u>ELECTRICAL APPARATUS</u>	3	750	750	663	663
21	<u>AUTOMOBILE</u>	17	15,017	3,404	6,887	2,646
22	<u>STORAGE BATTERIES</u>	4	2,127	-	1,755	-
	Grand Total	455	129,158	120,486	89,622	86,818

Annexure – A: Proforma/ Questionnaire



**GOVERNMENT OF SINDH
PLANNING & DEVELOPMENT DEPARTMENT
BUREAU OF STATISTICS**

www.sindhbos.gov.pk

Street-13, Block-8, Kehkashan Clifton, Karachi-75600, P.O.Box# 3879



021-99251259



ddindustries.sindhbos@gmail.com / m.kazimjafri@hotmail.com

The information supplied will be kept strictly confidential and will be used for statistical purpose only.	REPORT FOR	
	MONTH	YEAR

MONTHLY SURVEY OF INDUSTRIAL PRODUCTION AND EMPLOYMENT IN SINDH.

INDUSTRY CODE

Estb: Code

LOCATION CODE

PART-I GENERAL PARTICULARS

- i) Name and Address of the Establishment _____
- ii) Name, Designation, Telephone, Cell and _____
- Fax# of the person to be contacted. _____
- iii) Website and E-mail Address _____

PART-II PRODUCTION DATA

S.No	Major Items of Production	Code	Unit of Quantity	Code	Previous Month	Current Month	Reasons of Growth/ Decline

PART-III WORKING DAYS AND EMPLOYMENT

- i) No. of days establishment worked _____
- ii) No. of Production workers. Male _____ Female _____ Total _____
- iii) No. of Non production workers Male _____ Female _____ Total _____
- TOTAL (ii + iii)** Male _____ Female _____ Total _____

Note: Production Workers mean those who are directly associated with production. It includes those engaged in manufacturing, assembling packing repairing etc. Working Supervisor should also be included, Non production worker mean those who are not directly associated with production it includes Administrative Clerical and Services Staff like Chowkidar, Driver and Sweeper.

Signature _____
Designation _____
Date _____

Annexure – B: Important Definitions

Large Scale Manufacturing Industries

Establishments where 10 or more employees are working are called large Scale Manufacturing Industries.

Employees

Employees mean all persons whether part time or full time who work in the establishments and receive remuneration in cash or in kind. Working proprietors, unpaid family workers and home workers are excluded from the category of employee. There are two types of employees Production Workers and Non-Production Workers.

- **Production Workers**

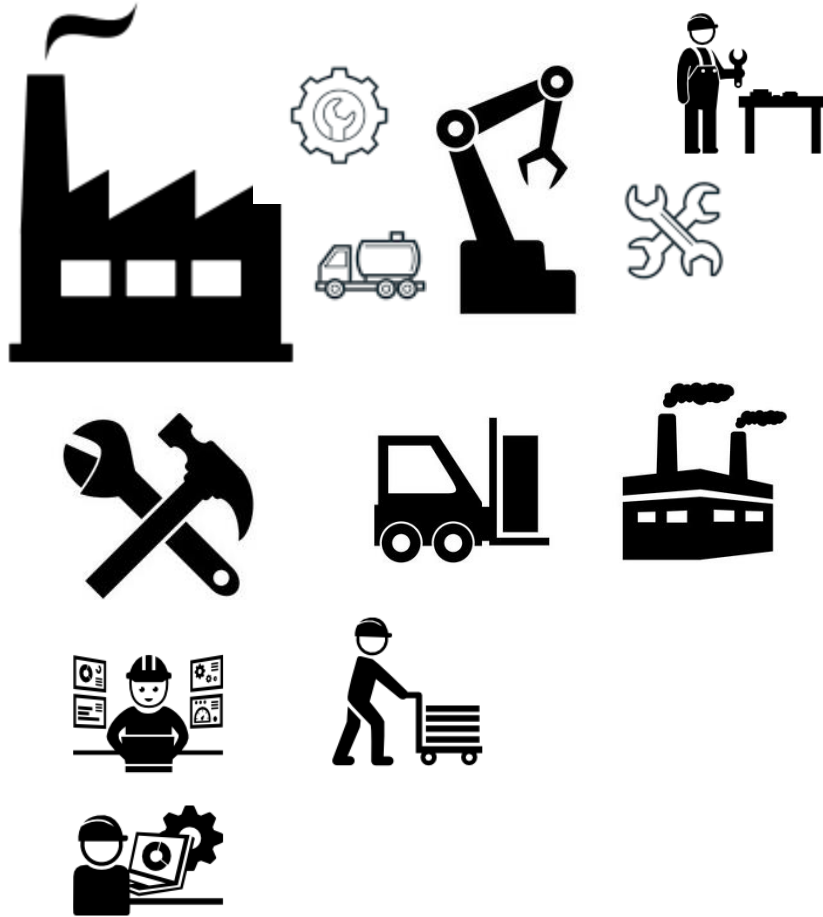
Are engaged in work directly associated with production like manufacturing, assembling, packing, repairing etc. Working supervisors and persons engaged for repairs and maintenance are also included.

- **Non-Production Workers**

Include administrative and professional employees, white-collar office employees, drivers, watchmen/guards, peons, sweepers, office boys, etc.

Annexure – C: Data Users

- Ministry of Industries & Production, Government of Pakistan.
- Planning & Development Department, Government of Sindh.
- Pakistan Bureau of Statistics, Government of Pakistan.
- State Bank of Pakistan.
- Provincial Bureaus of Statistics, Punjab, KPK and Baluchistan.
- Research & Training Wing, Planning & Development Department, Government of Sindh.



(Industries Section)
Bureau of Statistics
Planning & Development
Department
Government of Sindh
m.kazimjafri@hotmail.com

ST:13 Block-8 Kehkashan Clifton, Ch. Kahliqz-zaman road, Karachi
Ph. 021-99251259, Email: ddindustries.sindhbos@gmail.com
www.sindhbos.gov.pk