

MONTHLY SURVEY OF INDUSTRIAL PRODUCTION & EMPLOYMENT IN SINDH

June, 2020

Industries Section, BOS



**BUREAU OF STATISTICS
PLANNING & DEVELOPMENT DEPARTMENT
GOVERNMENT OF SINDH**

FOR OFFICIAL USE ONLY

Sindh Monthly Survey of Industrial Production & Employment (MIPE)

June, 2020



Bureau of Statistics
Planning & Development Department
Government of Sindh

www.sindhbos.gov.pk
ddindustries.sindhbos.gov.pk

ST:13 Block-8 Kehkashan Clifton, Ch. Kahliqz-zaman road, Karachi Ph. 021-99251259

Preface

Monthly Survey of Industrial Production and Employment (MIPE) is being conducted/ published by Sindh Bureau of Statistics on regular basis since 1970s. This report provides important statistics in respect of industrial production & employment of large Scale Manufacturing (LSM) industries in Sindh.

This report contains information on 61 items manufactured in 22 selected large scale industrial sectors covering 535 industrial establishments (selection on the basis of CMI 2005-06). These industries account for 69.6% of total value added of large scale manufacturing sector in Sindh.

MIPE Report provides information regarding General Index and Quantum Index of Manufacturing (QIM) to base period 2005-06, and analytical analysis on the current status of production and employment in manufacturing sector.

All the efforts are made to improve the industrial statistics and hope this report would prove useful to policy makers, planners, researchers and other data users. Suggestion/ recommendations from the users will always be welcomed and appreciated.

Director General
Bureau of Statistics
Planning & Development Department
Government of Sindh

Contents

PREFACE	2
CONTENTS	3
LIST OF TABLES	4
LIST OF FIGURES	4
LIST OF EQUATIONS	4
MIPE TEAM (INDUSTRIES SECTION)	5
1. INTRODUCTION	6
2. QUESTIONNAIRE/ PROFORMA	7
3. METHODOLOGY	7
4. EDITING	7
5. QUANTUM INDEX OF MANUFACTURING (QIM)	8
6. REPORT ANALYSIS	9
7. DATA TABLES	11
ANNEXURE – A: PROFORMA/ QUESTIONNAIRE	20
ANNEXURE – B: IMPORTANT DEFINITIONS	21
ANNEXURE – C: DATA USERS	22

List of Tables

TABLE 1: SERIES OF QUANTUM INDEX OF MANUFACTURING (QIM) AT (2005-06=100)	9
TABLE 2: PRODUCTION OF SELECTED ITEMS PERTAINING TO LARGE-SCALE MANUFACTURING SECTOR, JUNE-2020 VS MAY-2020	11
TABLE 3: PRODUCTION OF SELECTED ITEMS PERTAINING TO LARGE-SCALE MANUFACTURING SECTOR, JUNE-2020 VS JUNE-2019	13
TABLE 4: CUMULATIVE PRODUCTION OF SELECTED ITEMS PERTAINING TO LARGE-SCALE MANUFACTURING SECTOR,	15
TABLE 5: EMPLOYMENT IN SELECTED LARGE-SCALE MANUFACTURING SECTOR, JUNE-2020 VS MAY-2020	17
TABLE 6: EMPLOYMENT IN SELECTED LARGE-SCALE MANUFACTURING SECTOR, JUNE-2020 VS JUNE-2019	18
TABLE 7: AVERAGE MONTHLY EMPLOYMENT IN SELECTED LARGE SCALE MANUFACTURING SECTOR,	19

List of Figures

FIGURE 1: TREND OF QUANTUM INDEX OF LARGE SCALE MANUFACTURING INDUSTRIES AT BASE YEAR 2005-06	10
FIGURE 2: TREND OF AVERAGE MONTHLY EMPLOYMENT IN LARGE SCALE MANUFACTURING INDUSTRIES	10

List of Equations

EQUATION 1 LASPAYER'S INDEX	8
-----------------------------------	---

Team Lead:

Muhammad Kazim Jafri | Deputy Director

Team Members:

Ms. Rukhsana Aziz | Statistical Officer

Ms. FaaezaAtiq | Statistical Officer

Support in Data Collection and Compilation:

Mr. Muhammad YounusBukhari | Jr. Stenographer

Mr. Muhammad AkramBhatti | Statistical Computer

1. Introduction

Industrial Statistical is very essential tool to track industrial growth and implementation of policies in right directions. This sector has great importance for economic development of country. The composition of Pakistan's economy, Agriculture Sector is 20%, Industries Sector is 21% and Services Sector is 59% (PBS).

From the share of industrial sector 13.6% are manufacturing and more specifically 11% is Large Scale Manufacturing (LSM) Sector. The role of Sindh province in the Large Scale Manufacturing is very vital. According to Karachi Chamber of Commerce and Industry (KCCI), Karachi is the largest metropolitan city of Pakistan and produces 15% with an annual Gross Domestic Product (GDP). From Sindh Business Register (SBR) of Manufacturing Industries recently developed by Sindh Bureau of Statistics, Planning & Development Department around 67% establishments/factories are located in Karachi and 33% are in other districts to Sindh.

It is historical fact that countries with strong industrial sector have showed more economic growth and development industrial sector have shown improvement in national income and promoted living standard of population. A fresh industrial policy of Pakistan is also promotes employment, value-added exports and import substitution

For the timely and quality industrial statistics Bureau of Statistics, Sindh Planning & Development Department conducts Monthly Survey of Industrial Production and Employment (MIPE). This survey collects information on 61 items manufactured in 22 selected large scale Industrial sectors from 535 establishments/ factories in Sindh. The sample of 535 establishments / factories was drawn from the last Census of Manufacturing Industries (CMI), 2005-06. These industries account for 69.6% of total value added in terms of production during 2005-06, Census of Manufacturing Industries. In addition to collection, compilation, tabulation and processing of manufacturing data, Bureau of Statistics also computes monthly Quantum Index of Manufacturing by using the weights of production. The quantum index is an essential indicator to gauge to aggregate monthly production of province.

2. Questionnaire/ Proforma

A questionnaire/ Proforma is a research instrument consisting of a series of questions and other prompts for the purpose of gathering information from respondents. A pre-tested questionnaire is used for the data collection of industrial inputs related to employment and production, attached at **Annex-A**.

3. Methodology

The basic method of data collection for Sindh MIPE is the posting/ mailing of MIPE Questionnaires. More than 70% monthly returns are received to this Bureau through mail from industrial units. The non-responding or remaining establishments are visited by the officers/ officials of this Bureau, besides this the method of emailing, fax and telephonic approach are also used for collection of monthly returns and increase the response rate.

4. Editing

All the received returns are scrutinized for accuracy and consistency with previous data by the Industries Section of this Bureau. As per *Unit Calculation Sheet* different units of similar products are converted into the reporting units. In case of huge discrepancy between current and previous returns the factory management is approached to rectify that figures. In the absence establishment's return or non-availability of concerned person the average production of last month or the last month information is repeated for equivalence.

5. Quantum Index of Manufacturing (QIM)

A quantum index is an index based on quantity units of goods such as number or weight. Sindh bureau of Statistics is computing Index on Industrial Production using 2005-06 as base year. Index Series is generated by using Laspayer's Index.

$$QIM = \frac{\sum_{i=1}^n \frac{q_{im}}{q_{i0}} w_i}{\sum_{i=1}^n w_i} \times 100$$

Equation 1 Laspayer's Index

q_{im} = Production of i^{th} item during the current month

q_{i0} = Average Production of the same i^{th} item in the base period (2005-06)

w_i = Weight of the i^{th} item in the base period (2005-06)

$\sum_{i=1}^n w_i$ = Total Weight of 22 large scale industrial sectors covering 535 establishments in the base period with respect to the total value added of all the industries covered in CMI in the base year 2005-06.

Report Analysis

Summary findings on the basis of Index of Industrial Production are as follows:

- Overall Production in June, 2020 is significantly increased after lockdown of factories by 62.6% as compared to last month(i.e. May, 2020)
- Overall Production in June 2020 is followed same trend as .6% higher with the corresponding month of last year (i.e. May, 2019)
- Cumulative production from July to June(2019-20) is almost stagnant by 0.6% as the cumulative production from July to June (2018-19)
- Employment during June, 2020 is increased by more than 5% as compared to previous month (i.e. May, 2020)
- Employment during June, 2020 is gradually decreased by 2.65% than June, 2019.
- Average monthly employment during the period of July-June (2019-20) is 4.2% increased as compared to the corresponding period of July- June (2018-19)

Table 1: Series of Quantum Index of Manufacturing (QIM) at (2005-06=100)

Month/ Year	2015-16	2016-17	2017-18	2018-19	2019-20
July	255.7	284.0	327.0	290.8	259.7
August	266.0	287.7	336.4	265.5	220.9
September	274.2	281.5	330.9	311.3	266.7
October	247.0	291.4	355.7	287.0	277.0
November	283.7	317.1	343.2	273.3	280.3
December	261.7	302.8	341.5	265.2	223.7
January	297.4	286.1	374.0	321.3	263.8
February	293.2	283.3	324.5	309.0	313.2
March	253.9	275.6	341.4	279.7	258.2
April	250.6	276.8	338.5	258.2	172.1
May	254.4	283.9	311.3	248.2	199.8
June	259.0	258.1	307.4	257.6	324.9
Average (Geometric Mean)	265.9	285.4	335.5	279.7	251.3

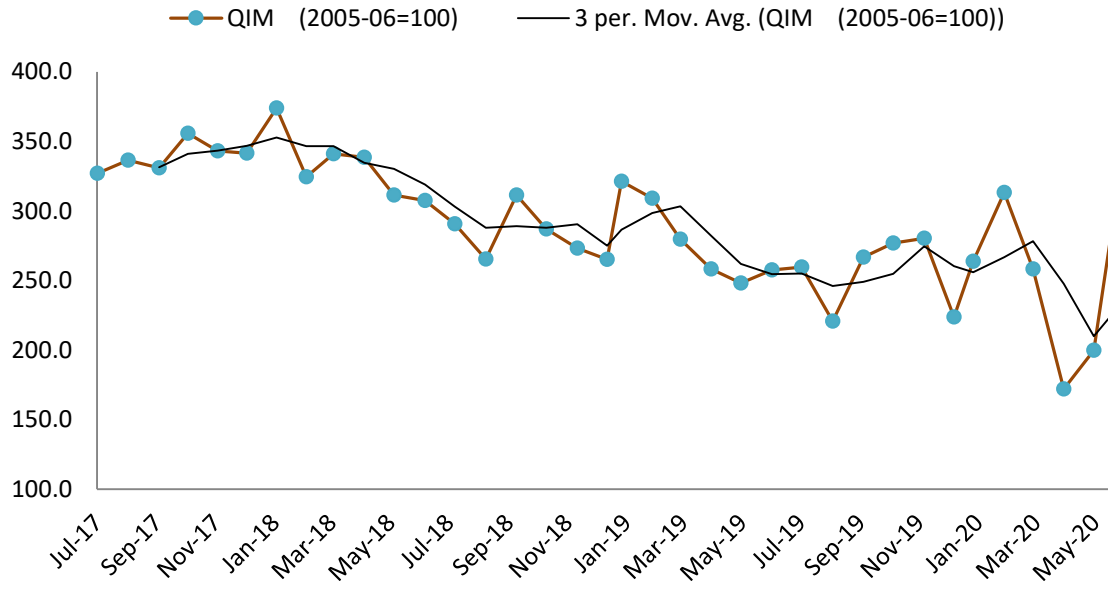


Figure 1: Trend of Quantum Index of Large Scale Manufacturing Industries at base year 2005-06

Quantum index of Large Manufacturing Industries started proper production after lockdown. Since many industries such as Paints & Varnish, Motor Tyres & Tubes, Electrical Appliance, Automobile, Sewing machine, Paper & Paper board sectors were severely affected by pandemic but now they are recover gradually. Especially “Electrical Appliance” and “Automobile” increase drastically from previous month.

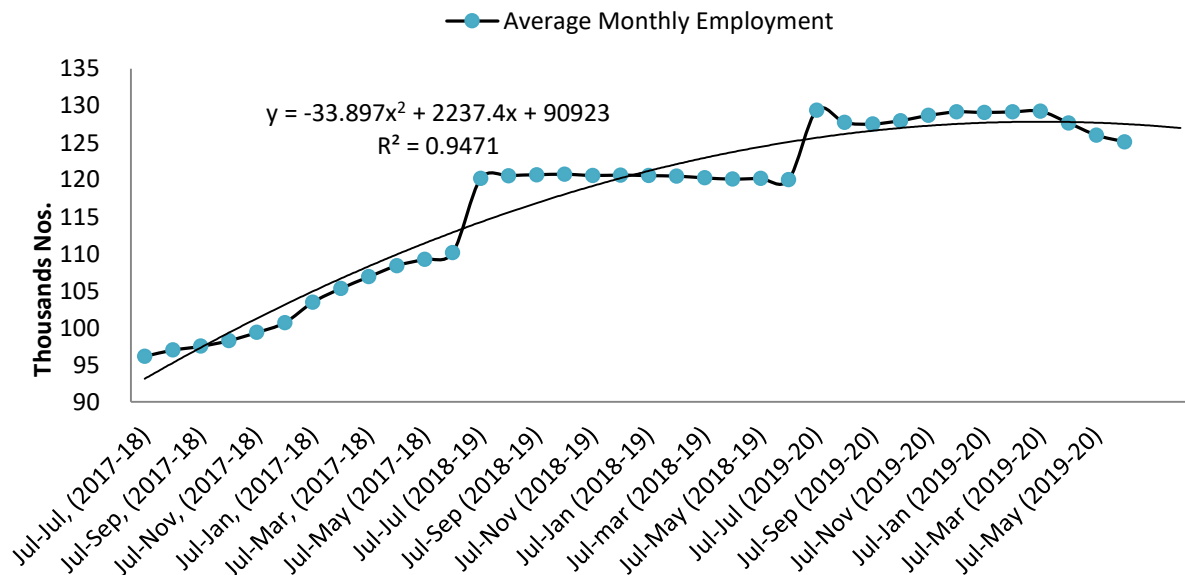


Figure 2: Trend of Average Monthly Employment in Large Scale Manufacturing Industries

The employment curve of Large Scale Manufacturing industries is declined from last four months. Due to COVID-19, most of the factories reduced their staff as per requirement in many sectors. In current circumstances, same trend in employment may be followed in future. The fitted quadratic model with $R^2 = 95\%$ is also predicting slight decline in LSM Employment in coming months.

6. Data Tables

Table 2: Production of Selected Items Pertaining to Large-Scale Manufacturing Sector, June-2020 Vs May-2020

Sr. No.	Industrial Sector/ Items	No. of Industrial Units as per CMI 2005-06	WEIGHT (2005-06)	Unit of Quantity	Production		Index of Production in June:2020 with May: 2020
					June:2020	May:2020	
1.	<u>VEGETABLE GHEE</u>	35	1.61				
i.	VEGETABLE GHEE		1.11	M.Tons	35,156	33,856	103.8
ii.	COOKING OIL		0.50	M.Tons	15,506	16,382	94.7
2.	<u>SUGAR</u>	26	4.32				
i.	SUGAR		4.32	M.Tons	-	-	
3.	<u>TEA</u>	7	1.23				
i.	TEA		1.23	M.Tons	2,959	3,732	79.3
4.	<u>BEVERAGES</u>	13	0.85				
i.	BEVERAGES		0.85	"000" NOs.	100,242	120,284	83.3
ii.	WATER*		0.85	"000" NOs.	16,479	14,429	114.2
5.	<u>COTTON TEXTILE</u>	133	13.65				
i.	COTTON YARN		9.10	M.Tons	13,860	15,851	87.4
ii.	COTTON FABRICS		4.13	"000" Sq. M	11,018	10,526	104.7
iii.	M.M.YARN		0.42	M.Tons	501	473	105.9
6.	<u>LEATHER TANNING</u>	30	0.29				
i.	UPPER LEATHER		0.07	"000" Sq. M.	604	253	238.7
ii.	WET BLUE TANNED		0.22	"000" Sq. M.	65	45	144.4
7.	<u>COTTON GINNING & PRESSING</u>	85	3.30				
i.	C.G.& PRESSING		3.30	Bales	-	-	
8.	<u>PAPER & PAPER BOARD</u>	6	0.01				
i.	PRINTING PAPER		0.01	M.Tons	253	332	76.2
ii.	WRITTEN PAPER		0.01	M.Tons	-	-	
iii.	PACKING & OTHER PAPER		0.01	M.Tons	1,344	1,221	110.1
iv.	ADVERTISING MATERIAL*		0.01	M.Tons	22	19	115.8
9.	<u>PHARMACEUTICALS</u>	78	6.37				
i.	TABLETS		1.67	"000" NOs.	1,995,171	2,107,614	94.7
ii.	LIQUIDS/SYRUPS		1.97	"000" Liters.	6,651	7,368	90.3
iii.	CAPSULES		1.36	"000" NOs.	282,011	299,154	94.3
iv.	INJECTIONS		1.22	"000" NOs.	104,639	105,689	99.0
v.	OINTMENT		0.15	KGs.	217,972	235,641	92.5
10.	<u>ACID, ALKALIES & SALT</u>	3	0.04				
i.	SULPHURIC ACID		0.04	M.Tons	2,391	2,421	98.8
11.	<u>FERTILIZER</u>	3	3.50				
i.	UREA		3.50	M.Tons	235,756	252,160	93.5
ii.	AMONIA		3.50	M.Tons	44,652	49,352	90.5
iii.	DAP*		3.50	M.Tons	72,697	74,591	97.5
12.	<u>PAINTS & VARNISH</u>	9	0.32				
i.	PAINTS		0.32	M.Tons	39	38	102.6
ii.	VARNISH		0.32	"000" Liters.	233	104	224.0

Sr. No.	Industrial Sector/ Items	No. of Industrial Units as per CMI 2005-06	WEIGHT (2005-06)	Unit of Quantity	Production		Index of Production in June:2020 with May: 2020
					June:2020	May:2020	
13.	<u>SOAP</u>	38	1.66				
i.	WASHING SOAP		1.66	M.Tons	5,357	5,252	102.0
ii.	DETERGENT POWDER		1.66	M.Tons	14,893	13,971	106.6
iii.	TOILET SOAP		1.66	M.Tons	1,890	1,940	97.4
iv.	TOOTH PASTE*		1.66	M.Tons	849	721	117.8
14.	<u>PETROLEUM PRODUCTS</u>	2	9.32				
i.	L.P.G		9.32	"000" Liters.	1,766	2,351	75.1
ii.	NAPHTHA SOLVENT		9.32	"000" Liters.	5,233	1,599	327.3
iii.	KEROSENE OIL		9.32	"000" Liters.	-	-	
iv.	H.S.D		9.32	"000" Liters.	81,790	94,295	86.7
v.	FURNACE OIL		9.32	"000" Liters.	35,197	20,278	173.6
vi.	ASPHALT 80-100		9.32	"000" Liters.	590	-	
vii.	ASPHALT 60-70		9.32	"000" Liters.	8,866	6,612	134.1
viii.	MOTOR SPRIT		9.32	"000" Liters.	23,076	26,577	86.8
ix.	JET FUEL		9.32	"000" Liters.	619	3,350	18.5
x.	LUBRICATING OIL		9.32	"000" Liters.	8,756	10,024	87.3
xi.	OTHERS*		0.00	"000" Liters.	813	16,490	4.9
15.	<u>TYRES & TUBES</u>	4	0.41				
i.	MOTOR TYRE		0.41	Nos.	154,806	32,000	483.8
ii.	MOTOR TUBE		0.41	Nos.	26,140	7,620	343.0
16.	<u>CEMENT</u>	11	3.86				
i.	CEMENT		3.86	M.Tons	113,974	69,151	164.8
17.	<u>M.S.PRODUCTS</u>	28	4.88				
i.	M.S PRODUCTS		4.88	M.Tons	3,717	2,685	138.4
18.	<u>SAFETY RAZOR BLADE</u>	1	0.40				
i.	SAFETY RAZOR BLAD		0.04	"000" NOS.	7,658	3,060	250.3
19.	<u>SEWING MACHINES</u>	3	0.25				
i.	SEWING MACHINES		0.25	Nos.	1,580	-	
20.	<u>ELEC. APPLIANCES</u>	3	2.21				
i.	REFRIGERATORS		0.11	Nos.	16,926	540	3134.4
ii.	AIR-CONDITIONERS		0.60	Nos.	7,209	630	1144.3
iii.	DEEP FREEZERS		0.50	Nos.	2,675	-	
iv.	WASHING MACHINES		0.50	Nos.	4,509	320	1409.1
v.	MICROWAVE OVEN*		0.50	Nos.	13,908	502	2770.5
21.	<u>AUTOMOBILE</u>	17	11.15				
i.	TRUCKS		2.71	Nos.	213	-	
ii.	BUSES		0.77	Nos.	70	-	
iii.	LCV'S		2.50	Nos.	1,003	57	1759.6
iv.	MOTOR CYCLES		2.06	Nos.	473,044	32,316	1463.8
v.	TRACTORS		0.25	Nos.	4,040	7,035	57.4
vi.	CARS		0.50	Nos.	5,041	656	768.4
vii.	VANS & JEEPS*		1.18	Nos.	261	13	2007.7
viii.	THREE WHEELERS*		1.18	Nos.	5,049	2,087	241.9
	Grand Total	535	69.63				

*New items are reporting from selected companies added since July (2019-20)

Table 3: Production of Selected Items Pertaining to Large-Scale Manufacturing Sector, June-2020 Vs June-2019

Sr. No.	Industrial Sector/ Items	No. of Industrial Units as per CMI 2005-06	WEIGHT (2005-06)	Unit of Quantity	Production		Index of Production in June:2020 with June:2019
					June:2020	June:2019	
1.	<u>VEGETABLE GHEE</u>	35	1.61				
i.	VEGETABLE GHEE		1.11	M.Tons	35,156	35,390	99.3
ii.	COOKING OIL		0.50	M.Tons	15,506	12,804	121.1
2.	<u>SUGAR</u>	26	4.32				
i.	SUGAR		4.32	M.Tons	-	-	
3.	<u>TEA</u>	7	1.23				
i.	TEA		1.23	M.Tons	2,959	3,553	83.3
4.	<u>BEVERAGES</u>	13	0.85				
i.	BEVERAGES		0.85	"000" NOs.	100,242	62,928	159.3
ii.	WATER*		0.85	"000" NOs.	16,479		
5.	<u>COTTON TEXTILE</u>	133	13.65				
i.	COTTON YARN		9.10	M.Tons	13,860	19,208	72.2
ii.	COTTON FABRICS		4.13	"000" Sq. M	11,018	12,246	90.0
iii.	M.M.YARN		0.42	M.Tons	501	1,634	30.7
6.	<u>LEATHER TANNING</u>	30	0.29				
i.	UPPER LEATHER		0.07	"000" Sq. M.	604	983	61.4
ii.	WET BLUE TANNED		0.22	"000" Sq. M.	65	110	59.1
7.	<u>COTTON GINNING & PRESSING</u>	85	3.30				
i.	C.G.& PRESSING		3.30	Bales	-	-	
8.	<u>PAPER & PAPER BOARD</u>	6	0.01				
i.	PRINTING PAPER		0.01	M.Tons	253	326	77.6
ii.	WRITTEN PAPER		0.01	M.Tons	-	291	0.0
iii.	PACKING & OTHER PAPER		0.01	M.Tons	1,344	1,182	113.7
iv.	ADVERTISING MATERIAL*		0.01	M.Tons	22		
9.	<u>PHARMACEUTICALS</u>	78	6.37				
i.	TABLETS		1.67	"000" NOs.	1,995,171	1,690,935	118.0
ii.	LIQUIDS/SYRUPS		1.97	"000" Liters.	6,651	3,616	183.9
iii.	CAPSULS		1.36	"000" NOs.	282,011	234,951	120.0
iv.	INJECTIONS		1.22	"000" NOs.	104,639	118,132	88.6
v.	OINTMENT		0.15	KGs.	217,972	172,412	126.4
10.	<u>ACID, ALKALIES & SALT</u>	3	0.04				
i.	SULPHURIC ACID		0.04	M.Tons	2,391	2,559	93.4
11.	<u>FERTILIZER</u>	3	3.50				
i.	UREA		3.50	M.Tons	235,756	230,914	102.1
ii.	AMONIA		3.50	M.Tons	44,652	43,129	103.5
iii.	DAP*		3.50	M.Tons	72,697		
12.	<u>PAINTS & VARNISH</u>	9	0.32				
i.	PAINTS		0.32	M.Tons	39	108	36.1
ii.	VARNISH		0.32	"000" Liters.	233	374	62.3

Sr. No.	Industrial Sector/ Items	No. of Industrial Units as per CMI 2005-06	WEIGHT (2005-06)	Unit of Quantity	Production		Index of Production in June:2020 with June:2019
					June:2020	June:2019	
13.	<u>SOAP</u>	38	1.66				
i.	WASHING SOAP		1.66	M.Tons	5,357	3,831	139.8
ii.	DETERGENT POWDER		1.66	M.Tons	14,893	12,720	117.1
iii.	TOILET SOAP		1.66	M.Tons	1,890	1,115	169.5
iv.	TOOTH PASTE*		1.66	M.Tons	849		
14.	<u>PETROLEUM PRODUCTS</u>	2	9.32				
i.	L.P.G		9.32	"000" Liters.	1,766	2,890	61.1
ii.	NAPHTHA SOLVENT		9.32	"000" Liters.	5,233	23,455	22.3
iii.	KEROSENE OIL		9.32	"000" Liters.	-	1,005	0.0
iv.	H.S.D		9.32	"000" Liters.	81,790	111,991	73.0
v.	FURNACE OIL		9.32	"000" Liters.	35,197	81,587	43.1
vi.	ASPHALT 80-100		9.32	"000" Liters.	590	3,774	15.6
vii.	ASPHALT 60-70		9.32	"000" Liters.	8,866	2,874	308.5
viii.	MOTOR SPRIT		9.32	"000" Liters.	23,076	21,841	105.7
ix.	JET FUEL		9.32	"000" Liters.	619	8,070	7.7
x.	LUBRICATING OIL		9.32	"000" Liters.	8,756	-	
xi.	OTHERS*		0.00	"000" Liters.	813	-	
15.	<u>TYRES & TUBES</u>	4	0.41				
i.	MOTOR TYRE		0.41	Nos.	154,806	220,244	70.3
ii.	MOTOR TUBE		0.41	Nos.	26,140	83,418	31.3
16.	<u>CEMENT</u>	11	3.86				
i.	CEMENT		3.86	M.Tons	113,974	85,735	132.9
17.	<u>M.S.PRODUCTS</u>	28	4.88				
i.	M.S PRODUCTS		4.88	M.Tons	3,717	1,878	197.9
18.	<u>SAFETY RAZOR BLADE</u>	1	0.40				
i.	SAFETY RAZOR BLAD		0.04	"000" NOs.	7,658	59,097	13.0
19.	<u>SEWING MACHINES</u>	3	0.25				
i.	SEWING MACHINES		0.25	Nos.	1,580	2,675	
20.	<u>ELEC. APPLIANCES</u>	3	2.21				
i.	REFRIGERATORS		0.11	Nos.	16,926	54,794	30.9
ii.	AIR-CONDITIONERS		0.60	Nos.	7,209	12,253	58.8
iii.	DEEP FREEZERS		0.50	Nos.	2,675	1,943	137.7
iv.	WASHING MACHINES		0.50	Nos.	4,509	16,463	27.4
v.	MICROWAVE OVEN*		0.50	Nos.	13,908		
21.	<u>AUTOMOBILE</u>	17	11.15				
i.	TRUCKS		2.71	Nos.	213	262	81.3
ii.	BUSES		0.77	Nos.	70	84	83.3
iii.	LCV'S		2.50	Nos.	1,003	1,676	59.8
iv.	MOTOR CYCLES		2.06	Nos.	473,044	129,848	364.3
v.	TRACTORS		0.25	Nos.	4,040	3,558	113.5
vi.	CARS		0.50	Nos.	5,041	12,840	39.3
vii.	VANS & JEEPS*		1.18	Nos.	261	13	2007.7
viii.	THREE WHEELERS*		1.18	Nos.	5,049	2,087	241.9
	Grand Total	535	69.63				

*New items are reporting from selected companies added since July (2019-20)

Table 4: Cumulative Production of Selected Items Pertaining to Large-Scale Manufacturing Sector, 2019-20 (Jul to June) Vs 2018-19 (Jul to June)

Sr. No.	Industrial Sector/ Items	No. of Industrial Units as per CMI 2005-06	WEIGHT (2005-06)	Unit of Quantity	Production		Index of Production in 2019-20 (Jul-June) with 2018-19 (Jul-June)
					2019-20 (Jul-June)	2018-19 (Jul-June)	
1.	<u>VEGETABLE GHEE</u>	35	1.61				
i.	VEGETABLE GHEE		1.11	M.Tons	411,379	413,607	99.5
ii.	COOKING OIL		0.50	M.Tons	189,727	185,642	102.2
2.	<u>SUGAR</u>	26	4.32				
i.	SUGAR		4.32	M.Tons	1,415,303	1,809,582	78.2
3.	<u>TEA</u>	7	1.23				
i.	TEA		1.23	M.Tons	51,402	75,622	68.0
4.	<u>BEVERAGES</u>	13	0.85				
i.	BEVERAGES		0.85	"000" NOs.	1,100,658	1,126,934	97.7
ii.	WATER*		0.85	"000" NOs.	185,737		
5.	<u>COTTON TEXTILE</u>	133	13.65				
i.	COTTON YARN		9.10	M.Tons	206,241	258,598	79.8
ii.	COTTON FABRICS		4.13	"000" Sq. M	128,735	151,137	85.2
iii.	M.M.YARN		0.42	M.Tons	9,233	24,649	37.5
6.	<u>LEATHER TANNING</u>	30	0.29				
i.	UPPER LEATHER		0.07	"000" Sq. M.	10,997	14,440	76.2
ii.	WET BLUE TANNED		0.22	"000" Sq. M.	1,038	1,277	81.3
7.	<u>COTTON GINNING & PRESSING</u>	85	3.30				
i.	C.G.& PRESSING		3.30	Bales	3,472,114	4,148,976	83.7
8.	<u>PAPER & PAPER BOARD</u>	6	0.01				
i.	PRINTING PAPER		0.01	M.Tons	4,342	3,720	116.7
ii.	WRITTEN PAPER		0.01	M.Tons	2,767	3,640	76.0
iii.	PACKING & OTHER PAPER		0.01	M.Tons	17,973	19,952	90.1
iv.	ADVERTISING MATERIAL*		0.01	M.Tons	276		
9.	<u>PHARMACEUTICALS</u>	78	6.37				
i.	TABLETS		1.67	"000" NOs.	24,723,938	24,976,023	99.0
ii.	LIQUIDS/SYRUPS		1.97	"000" Liters.	79,733	85,929	92.8
iii.	CAPSULES		1.36	"000" NOs.	3,368,066	3,165,284	106.4
iv.	INJECTIONS		1.22	"000" NOs.	1,157,531	1,193,103	97.0
v.	OINTMENT		0.15	KGs.	2,700,941	2,685,845	100.6
10.	<u>ACID, ALKALIES & SALT</u>	3	0.04				
i.	SULPHURIC ACID		0.04	M.Tons	27,415	30,674	89.4
11.	<u>FERTILIZER</u>	3	3.50				
i.	UREA		3.50	M.Tons	2,768,987	2,470,194	112.1
ii.	AMONIA		3.50	M.Tons	636,118	457,825	138.9
iii.	DAP*		3.50	M.Tons	737,664		
12.	<u>PAINTS & VARNISH</u>	9	0.32				
i.	PAINTS		0.32	M.Tons	1,095	1,372	79.8
ii.	VARNISH		0.32	"000" Liters.	4,092	5,680	72.0

Sr. No.	Industrial Sector/ Items	No. of Industrial Units as per CMI 2005-06	WEIGHT (2005-06)	Unit of Quantity	Production		Index of Production in 2019-20 (Jul-June) with 2018-19 (Jul-June)
					2019-20 (Jul-June)	2018-19 (Jul-June)	
13.	<u>SOAP</u>	38	1.66				
i.	WASHING SOAP		1.66	M.Tons	60,420	52,615	114.8
ii.	DETERGENT POWDER		1.66	M.Tons	171,234	170,171	100.6
iii.	TOILET SOAP		1.66	M.Tons	22,853	23,083	99.0
iv.	TOOTH PASTE*		1.66	M.Tons	9,327		
14.	<u>PETROLEUM PRODUCTS</u>	2	9.32				
i.	L.P.G		9.32	"000" Liters.	24,517	32,413	75.6
ii.	NAPHTHA SOLVENT		9.32	"000" Liters.	212,046	318,285	66.6
iii.	KEROSENE OIL		9.32	"000" Liters.	8,426	9,006	93.6
iv.	H.S.D		9.32	"000" Liters.	1,215,285	1,475,341	82.4
v.	FURNACE OIL		9.32	"000" Liters.	608,000	878,774	69.2
vi.	ASPHALT 80-100		9.32	"000" Liters.	115,451	84,503	136.6
vii.	ASPHALT 60-70		9.32	"000" Liters.	51,354	28,227	181.9
viii.	MOTOR SPRIT		9.32	"000" Liters.	196,694	292,841	67.2
ix.	JET FUEL		9.32	"000" Liters.	120,048	149,535	80.3
x.	LUBRICATING OIL		9.32	"000" Liters.	70,506	49,842	141.5
xi.	OTHERS*		0.00	"000" Liters.		1,186	
15.	<u>TYRES & TUBES</u>	4	0.41				
i.	MOTOR TYRE		0.41	Nos.	2,058,041	2,682,054	76.7
ii.	MOTOR TUBE		0.41	Nos.	481,886	747,346	64.5
16.	<u>CEMENT</u>	11	3.86				
i.	CEMENT		3.86	M.Tons	1,561,444	1,349,955	115.7
17.	<u>M.S.PRODUCTS</u>	28	4.88				
i.	M.S PRODUCTS		4.88	M.Tons	50,014	42,766	116.9
18.	<u>SAFETY RAZOR BLADE</u>	1	0.40				
i.	SAFETY RAZOR BLAD		0.04	"000" NOs.	574,273	824,853	69.6
19.	<u>SEWING MACHINES</u>	3	0.25				
i.	SEWING MACHINES		0.25	Nos.	26,407	33,241	79.4
20.	<u>ELEC. APPLIANCES</u>	3	2.21				
i.	REFRIGERATORS		0.11	Nos.	412,214	569,518	72.4
ii.	AIR-CONDITIONERS		0.60	Nos.	56,698	158,042	35.9
iii.	DEEP FREEZERS		0.50	Nos.	10,550	16,776	62.9
iv.	WASHING MACHINES		0.50	Nos.	199,413	190,461	104.7
v.	MICROWAVE OVEN*		0.50	Nos.	277,319		
21.	<u>AUTOMOBILE</u>	17	11.15				
i.	TRUCKS		2.71	Nos.	2,994	6,035	49.6
ii.	BUSES		0.77	Nos.	492	913	53.9
iii.	LCV'S		2.50	Nos.	12,900	24,048	53.6
iv.	MOTOR CYCLES		2.06	Nos.	1,629,720	1,725,091	94.5
v.	TRACTORS		0.25	Nos.	37,254	49,907	74.6
vi.	CARS		0.50	Nos.	102,042	208,255	49.0
vii.	VANS & JEEPS*		1.18	Nos.	3,721		
viii.	THREE WHEELERS*		1.18	Nos.	38,503		
	Grand Total	535	69.63				

*New items are reporting from selected companies added since July (2019-20)

Table 5: Employment in Selected Large-Scale Manufacturing Sector, June-2020 Vs May-2020

Sr. No.	Industrial Sector/ Items	No. of Industrial Units as per CMI 2005-06	Total Employees		Production Worker	
			June:2020	May:2020	June:2020	May:2020
1	<u>VEGETABLE GHEE</u>	35	2,262	2,258	1,582	1,574
2	<u>SUGAR</u>	26	5,575	5,525	5,214	5,288
3	<u>TEA</u>	7	3,012	3,033	2,550	2,574
4	<u>BEVERAGES</u>	13	3,132	3,598	1,035	1,537
5	<u>COTTON TEXTILE</u>	133	53,264	53,414	41,069	41,205
6	<u>LEATHER TANNING</u>	30	6,335	6,344	5,587	5,605
7	<u>PAPER & PAPER BOARD</u>	6	2,154	2,162	1,520	1,526
8	<u>PHARMACEUTICALS</u>	78	6,266	6,274	2,964	3,662
9	<u>ACID, ALKALIES & SALT</u>	3	18	18	13	13
10	<u>FERTILIZER</u>	3	989	984	824	816
11	<u>PAINTS & VARNISH</u>	9	99	103	50	54
12	<u>SOAP</u>	38	2,065	2,072	1,719	1,724
13	<u>PETROLEUM PRODUCTS</u>	2	438	438	339	339
14	<u>TYRES & TUBES</u>	4	5,680	716	4,020	506
15	<u>CEMENT</u>	11	4,357	4,362	1,860	1,863
16	<u>STEEL PRODUCTS</u>	1	-	-	-	-
17	<u>M.S PRODUCTS</u>	28	1,025	818	834	670
18	<u>SAFETY RAZOR BLAD</u>	1	288	288	251	251
19	<u>SEWING MACHINES</u>	3	410	-	354	-
20	<u>ELEC. APPLIANCES</u>	3	750	375	663	330
21	<u>AUTOMOBILE</u>	17	15,001	14,877	6,770	6,865
22	<u>STORAGE BATTERIES</u>	4	1,847	1,808	1,628	1,595
	Grand Total	455	114,966	109,467	80,844	77,995

Table 6: Employment in Selected Large-Scale Manufacturing Sector, June-2020 Vs June-2019

Sr. No.	Industrial Sector/ Items	No. of Industrial Units as per CMI 2005-06	Employees		Production Worker	
			June:2020	June:2019	June:2020	June:2019
1	<u>VEGETABLE GHEE</u>	35	2,262	2,241	1,582	1,642
2	<u>SUGAR</u>	26	5,575	8,934	5,214	5,608
3	<u>TEA</u>	7	3,012	140	2,550	96
4	<u>BEVERAGES</u>	13	3,132	3,109	1,035	1,543
5	<u>COTTON TEXTILE</u>	133	53,264	57,274	41,069	45,543
6	<u>LEATHER TANNING</u>	30	6,335	5,888	5,587	5,008
7	<u>PAPER & PAPER BOARD</u>	6	2,154	522	1,520	434
8	<u>PHARMACEUTICALS</u>	78	6,266	9,729	2,964	6,440
9	<u>ACID, ALKALIES & SALT</u>	3	18	34	13	22
10	<u>FERTILIZER</u>	3	989	331	824	242
11	<u>PAINTS & VARNISH</u>	9	99	106	50	57
12	<u>SOAP</u>	38	2,065	3,123	1,719	2,750
13	<u>PETROLEUM PRODUCTS</u>	2	438	414	339	341
14	<u>TYRES & TUBES</u>	4	5,680	6,036	4,020	4,236
15	<u>CEMENT</u>	11	4,357	5,058	1,860	2,170
16	<u>STEEL PRODUCTS</u>	1	-	9,755	-	6,627
17	<u>M.S PRODUCTS</u>	28	1,025	827	834	670
18	<u>SAFETY RAZOR BLAD</u>	1	288	288	251	257
19	<u>SEWING MACHINES</u>	3	410	151	354	110
20	<u>ELECTRICAL APPARATUS</u>	3	750	750	663	663
21	<u>AUTOMOBILE</u>	17	15,001	3,385	6,770	2,655
22	<u>STORAGE BATTERIES</u>	4	1,847		1,628	
	Grand Total	455	114,966	118,094	80,844	87,114

**Table 7: Average Monthly Employment in Selected Large Scale Manufacturing Sector,
2019-20 (Jul to June) Vs 2018-19 (Jul to June)**

Sr. No.	Industrial Sector/ Items	No. of Industrial Units as per CMI 2005-06	Average Monthly Total Employment		Average Monthly Production Worker	
			(Jul-June) 2019-20	(Jul-June) 2018-19	(Jul-June) 2019-20	(Jul-June) 2018-19
1	<u>VEGETABLE GHEE</u>	35	2,241	2,356	1,602	1,757
2	<u>SUGAR</u>	26	8,033	9,113	5,487	5,814
3	<u>TEA</u>	7	3,098	142	2,247	98
4	<u>BEVERAGES</u>	13	3,120	3,852	1,181	1,871
5	<u>COTTON TEXTILE</u>	133	54,110	57,519	41,978	44,056
6	<u>LEATHER TANNING</u>	30	6,498	5,754	5,568	4,876
7	<u>PAPER & PAPER BOARD</u>	6	2,237	532	1,609	460
8	<u>PHARMACEUTICALS</u>	78	6,227	9,640	3,446	6,222
9	<u>ACID, ALKALIES & SALT</u>	3	32	34	21	22
10	<u>FERTILIZER</u>	3	971	339	806	250
11	<u>PAINTS & VARNISH</u>	9	105	106	55	54
12	<u>SOAP</u>	38	2,414	3,299	2,086	2,929
13	<u>PETROLEUM PRODUCTS</u>	2	435	418	339	345
14	<u>TYRES & TUBES</u>	4	4,908	6,099	3,463	4,259
15	<u>CEMENT</u>	11	4,519	5,152	1,921	2,249
16	<u>STEEL PRODUCTS</u>	1	6,983	10,159	4,733	7,035
17	<u>M.S PRODUCTS</u>	28	842	911	683	746
18	<u>SAFETY RAZOR BLAD</u>	1	288	288	253	258
19	<u>SEWING MACHINES</u>	3	345	149	299	109
20	<u>ELECTRICAL APPARATUS</u>	3	688	750	580	663
21	<u>AUTOMOBILE</u>	17	14,981	3,374	6,868	2,631
22	<u>STORAGE BATTERIES</u>	4	2,050	-	1,642	-
	Grand Total	455	125,122	119,986	86,865	86,703

Annexure – A: Proforma/ Questionnaire



**GOVERNMENT OF SINDH
PLANNING & DEVELOPMENT DEPARTMENT
BUREAU OF STATISTICS**

www.sindhbos.gov.pk

Street-13, Block-8, Kehkashan Clifton, Karachi-75600, P.O.Box# 3879



021-99251259



ddindustries.sindhbos@gmail.com / m.kazimjafri@hotmail.com

The information supplied will be kept strictly confidential and will be used for statistical purpose only.	REPORT FOR	
	MONTH	YEAR

MONTHLY SURVEY OF INDUSTRIAL PRODUCTION AND EMPLOYMENT IN SINDH.

INDUSTRY CODE

--	--	--	--	--

Estb: Code

--	--	--	--

LOCATION CODE

--	--

PART-I GENERAL PARTICULARS

i) Name and Address of the Establishment _____

ii) Name, Designation, Telephone, Cell and _____

Fax# of the person to be contacted. _____

iii) Website and E-mail Address _____

PART-II PRODUCTION DATA

S.No	Major Items of Production	Code	Unit of Quantity	Code	Previous Month	Current Month	Reasons of Growth/ Decline

PART-III WORKING DAYS AND EMPLOYMENT

i) No. of days establishment worked _____

ii) No. of Production workers. Male _____ Female _____ Total _____

iii) No. of Non production workers Male _____ Female _____ Total _____

TOTAL (ii + iii)

Male _____ Female _____ Total _____

Note: Production Workers mean those who are directly associated with production. It includes those engaged in manufacturing, assembling packing repairing etc. Working Supervisor should also be included, Non production worker mean those who are not directly associated with production it includes Administrative Clerical and Services Staff like Chowkidar, Driver and Sweeper.

Signature _____

Designation _____

Date _____

Annexure – B: Important Definitions

Large Scale Manufacturing Industries

Establishments where 10 or more employees are working are called large Scale Manufacturing Industries.

Employees

Employees mean all persons whether part time or full time who work in the establishments and receive remuneration in cash or in kind. Working proprietors, unpaid family workers and home workers are excluded from the category of employee. There are two types of employees Production Workers and Non-Production Workers.

- **Production Workers**

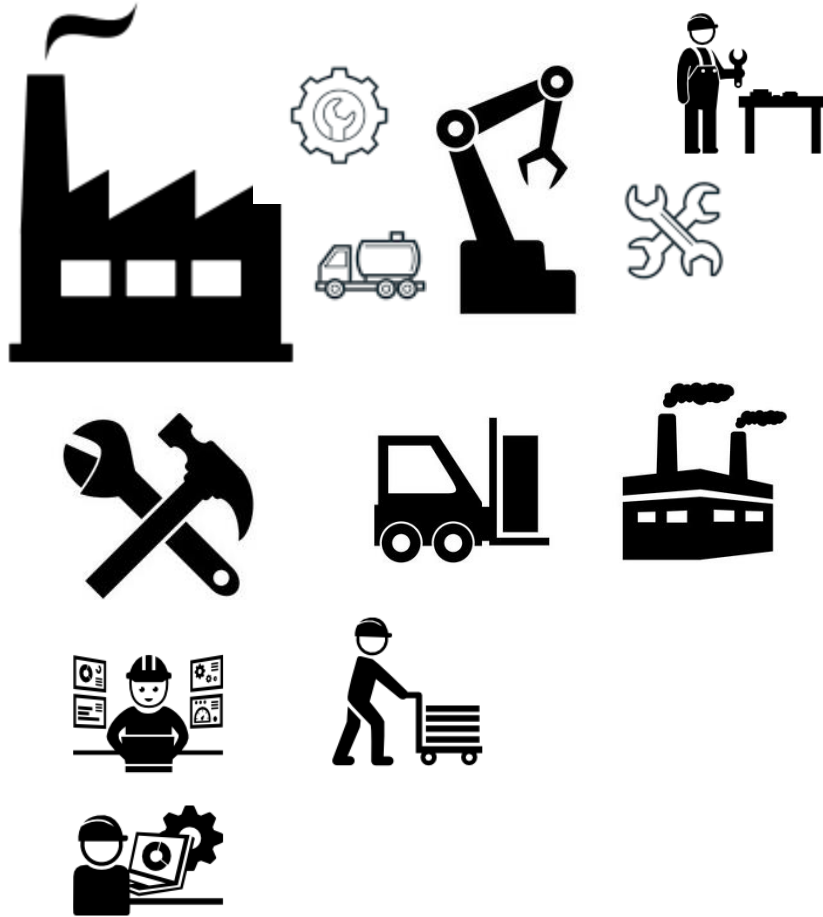
Are engaged in work directly associated with production like manufacturing, assembling, packing, repairing etc. Working supervisors and persons engaged for repairs and maintenance are also included.

- **Non-Production Workers**

Include administrative and professional employees, white-collar office employees, drivers, watchmen/guards, peons, sweepers, office boys, etc.

Annexure – C: Data Users

- Ministry of Industries & Production, Government of Pakistan.
- Planning & Development Department, Government of Sindh.
- Pakistan Bureau of Statistics, Government of Pakistan.
- State Bank of Pakistan.
- Provincial Bureaus of Statistics, Punjab, KPK and Baluchistan.
- Research & Training Wing, Planning & Development Department, Government of Sindh.



(Industries Section)
Bureau of Statistics
Planning & Development
Department
Government of Sindh
m.kazimjafri@hotmail.com

ST:13 Block-8 Kehkashan Clifton, Ch. Kahliqz-zaman road, Karachi
Ph. 021-99251259, Email: ddindustries.sindhbos@gmail.com
www.sindhbos.gov.pk