

MONTHLY SURVEY OF INDUSTRIAL PRODUCTION & EMPLOYMENT IN SINDH

March, 2020

Industries Section, BOS



BUREAU OF STATISTICS
PLANNING & DEVELOPMENT DEPARTMENT
GOVERNMENT OF SINDH

FOR OFFICIAL USE ONLY

Sindh Monthly Survey of Industrial Production & Employment (MIPE) March, 2020



Bureau of Statistics
Planning & Development Department
Government of Sindh
www.sindhbos.gov.pk
ddindustries.sindhbos.gov.pk

ST:13 Block-8 Kehkashan Clifton, Ch. Kahliqz-zaman road, Karachi Ph. 021-99251259

Preface

Monthly Survey of Industrial Production and Employment (MIPE) is being conducted/ published by Sindh Bureau of Statistics on regular basis since 1970s. This report provides important statistics in respect of industrial production & employment of large Scale Manufacturing (LSM) industries in Sindh.

This report contains information on 61 items manufactured in 22 selected large scale industrial sectors covering 535 industrial establishments (selection on the basis of CMI 2005-06). These industries account for 69.6% of total value added of large scale manufacturing sector in Sindh.

MIPE Report provides information regarding General Index and Quantum Index of Manufacturing (QIM) to base period 2005-06, and analytical analysis on the current status of production and employment in manufacturing sector.

All the efforts are made to improve the industrial statistics and hope this report would prove useful to policy makers, planners, researchers and other data users. Suggestion/ recommendations from the users will always be welcomed and appreciated.

Pervaiz Ahmed Chandio
Director General
Bureau of Statistics
Planning & Development Department
Government of Sindh

Contents

PREFACE	2
CONTENTS	3
LIST OF TABLES	4
LIST OF FIGURES	4
LIST OF EQUATIONS	4
MIPE TEAM (INDUSTRIES SECTION)	5
1. INTRODUCTION	6
2. QUESTIONNAIRE/ PROFORMA	7
3. METHODOLOGY	7
4. EDITING	7
5. QUANTUM INDEX OF MANUFACTURING (QIM)	8
6. REPORT ANALYSIS	9
7. DATA TABLES	11
ANNEXURE – A: PROFORMA/ QUESTIONNAIRE	19
ANNEXURE – B: IMPORTANT DEFINITIONS	21
ANNEXURE – C: DATA USERS	22

List of Tables

TABLE 1: SERIES OF QUANTUM INDEX OF MANUFACTURING (QIM) AT (2005-06=100)	9
TABLE 2: PRODUCTION OF SELECTED ITEMS PERTAINING TO LARGE-SCALE MANUFACTURING SECTOR, MARCH-2020 Vs FEBRUARY-2020	11
TABLE 3: PRODUCTION OF SELECTED ITEMS PERTAINING TO LARGE-SCALE MANUFACTURING SECTOR, MARCH-2020 Vs MARCH-2019	13
TABLE 4: CUMULATIVE PRODUCTION OF SELECTED ITEMS PERTAINING TO LARGE-SCALE MANUFACTURING SECTOR,.....	15
TABLE 5: EMPLOYMENT IN SELECTED LARGE-SCALE MANUFACTURING SECTOR, MARCH-2020 Vs FEBRUARY-2020.....	17
TABLE 6: EMPLOYMENT IN SELECTED LARGE-SCALE MANUFACTURING SECTOR, MARCH-2020 Vs MARCH-2019	18
TABLE 7: AVERAGE MONTHLY EMPLOYMENT IN SELECTED LARGE SCALE MANUFACTURING SECTOR,	19

List of Figures

FIGURE 1: TREND OF QUANTUM INDEX OF LARGE SCALE MANUFACTURING INDUSTRIES AT BASE YEAR 2005-06.....	10
FIGURE 2: TREND OF AVERAGE MONTHLY EMPLOYMENT IN LARGE SCALE MANUFACTURING INDUSTRIES.....	10

List of Equations

EQUATION 1 LASPAYER'S INDEX	8
-----------------------------------	---

Team Lead:

Muhammad Kazim Jafri | Deputy Director

Team Members:

Ms. Rukhsana Aziz | Statistical Officer

Ms. FaaezaAtiq | Statistical Officer

Support in Data Collection and Compilation:

Mr. Muhammad YounusBukhari | Jr. Stenographer

Mr. Muhammad AkramBhatti | Statistical Computer

1. Introduction

Industrial Statistical is very essential tool to track industrial growth and implementation of policies in right directions. This sector has great importance for economic development of country. The composition of Pakistan's economy, Agriculture Sector is 20%, Industries Sector is 21% and Services Sector is 59% (PBS).

From the share of industrial sector 13.6% are manufacturing and more specifically 11% is Large Scale Manufacturing (LSM) Sector. The role of Sindh province in the Large Scale Manufacturing is very vital. According to Karachi Chamber of Commerce and Industry (KCCI), Karachi is the largest metropolitan city of Pakistan and produces 15% with an annual Gross Domestic Product (GDP). From Sindh Business Register (SBR) of Manufacturing Industries recently developed by Sindh Bureau of Statistics, Planning & Development Department around 67% establishments/factories are located in Karachi and 33% are in other districts to Sindh.

It is historical fact that countries with strong industrial sector have showed more economic growth and development industrial sector have shown improvement in national income and promoted living standard of population. A fresh industrial policy of Pakistan is also promotes employment, value-added exports and import substitution

For the timely and quality industrial statistics Bureau of Statistics, Sindh Planning & Development Department conducts Monthly Survey of Industrial Production and Employment (MIPE). This survey collects information on 61 items manufactured in 22 selected large scale Industrial sectors from 535 establishments/ factories in Sindh. The sample of 535 establishments / factories was drawn from the last Census of Manufacturing Industries (CMI), 2005-06. These industries account for 69.6% of total value added in terms of production during 2005-06, Census of Manufacturing Industries. In addition to collection, compilation, tabulation and processing of manufacturing data, Bureau of Statistics also computes monthly Quantum Index of Manufacturing by using the weights of production. The quantum index is an essential indicator to gauge to aggregate monthly production of province.

2. Questionnaire/ Proforma

A questionnaire/ Proforma is a research instrument consisting of a series of questions and other prompts for the purpose of gathering information from respondents. A pre-tested questionnaire is used for the data collection of industrial inputs related to employment and production, attached at **Annex-A**.

3. Methodology

The basic method of data collection for Sindh MIPE is the posting/ mailing of MIPE Questionnaires. More than 70% monthly returns are received to this Bureau through mail from industrial units. The non-responding or remaining establishments are visited by the officers/ officials of this Bureau, besides this the method of emailing, fax and telephonic approach are also used for collection of monthly returns and increase the response rate.

4. Editing

All the received returns are scrutinized for accuracy and consistency with previous data by the Industries Section of this Bureau. As per *Unit Calculation Sheet* different units of similar products are converted into the reporting units. In case of huge discrepancy between current and previous returns the factory management is approached to rectify that figures. In the absence establishment's return or non-availability of concerned person the average production of last month or the last month information is repeated for equivalence.

5. Quantum Index of Manufacturing (QIM)

A quantum index is an index based on quantity units of goods such as number or weight. Sindh bureau of Statistics is computing Index on Industrial Production using 2005-06 as base year. Index Series is generated by using Laspayer's Index.

$$QIM = \frac{\sum_{i=1}^n \frac{q_{im}}{q_{i0}} w_i}{\sum_{i=1}^n w_i} \times 100$$

Equation 1 Laspayer's Index

q_{im} = Production of i^{th} item during the current month

q_{i0} = Average Production of the same i^{th} item in the base period (2005-06)

w_i = Weight of the i^{th} item in the base period (2005-06)

$\sum_{i=1}^n w_i$ = Total Weight of 22 large scale industrial sectors covering 535 establishments in the base period with respect to the total value added of all the industries covered in CMI in the base year 2005-06.

6. Report Analysis

Summary findings on the basis of Index of Industrial Production are as follows:

- Overall Production in March, 2020 is significantly decreased around 18% as compared to last month(i.e. February, 2020)
- Overall Production in March 2020 is significantly decreased more than 5% as compared to corresponding month of last year (i.e. March, 2019)
- Cumulative production from July to March(2019-20) is slightly increased 1.58% as the cumulative production from July to March (2018-19)
- Employment during March, 2020 is nominal increased by 0.1% as compared to previous month (i.e. February, 2020)
- Employment during March, 2020 is more than 9% higher than March, 2019.
- Average monthly employment during the period of July-March (2019-20) is 7.48% increased as compared to the corresponding period of July- March (2018-19)

Table 1: Series of Quantum Index of Manufacturing (QIM) at (2005-06=100)

Month/ Year	2015-16	2016-17	2017-18	2018-19	2019-20
July	255.7	284.0	327.0	290.8	259.7
August	266.0	287.7	336.4	265.5	220.9
September	274.2	281.5	330.9	311.3	266.7
October	247.0	291.4	355.7	287.0	277.0
November	283.7	317.1	343.2	273.3	280.3
December	261.7	302.8	341.5	265.2	223.7
January	297.4	286.1	374.0	321.3	263.8*
February	293.2	283.3	324.5	309.0	313.2
March	253.9	275.6	341.4	279.7	258.2
April	250.6	276.8	338.5	258.2	
May	254.4	283.9	311.3	248.2	
June	259.0	258.1	307.4	257.6	
Average (Geometric Mean)	265.9	285.4	335.5	279.7	

*Quantum index of January is updated due to revised figure of cotton fabrics in cotton textile sector

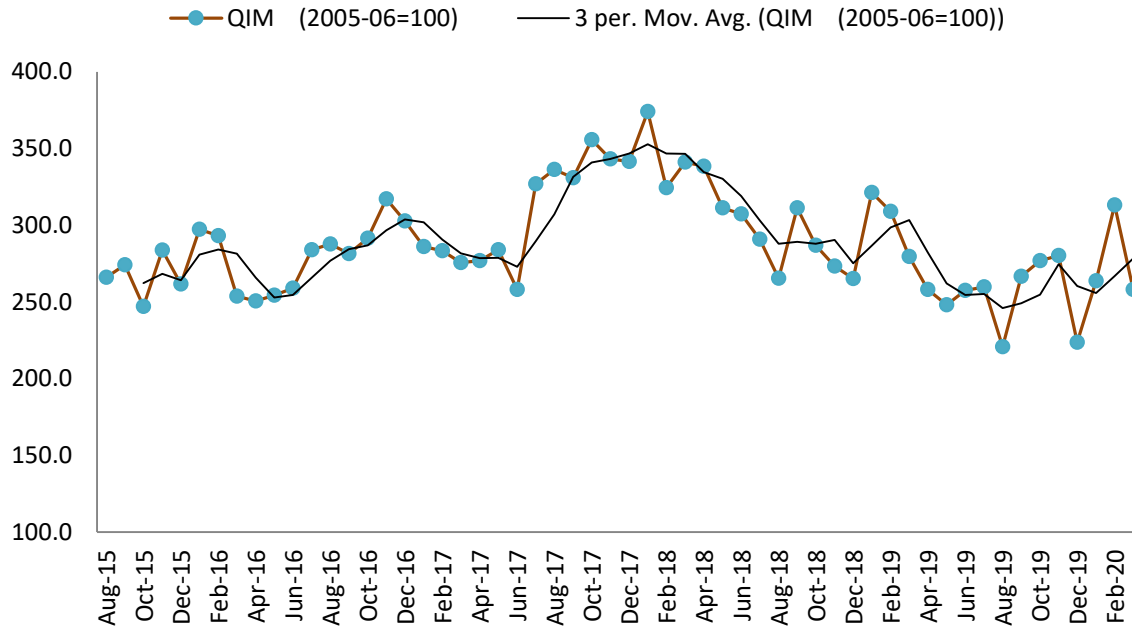


Figure 1: Trend of Quantum Index of Large Scale Manufacturing Industries at base year 2005-06

During the current month decreasing trend occurred in mostly manufacturing products while sugar and cotton ginning showed seasonal decreasing trend. Due to pandemic (COVID-19), most of the factories were closed after March 15, 2020 except food, soap & detergent and pharmaceutical industry.

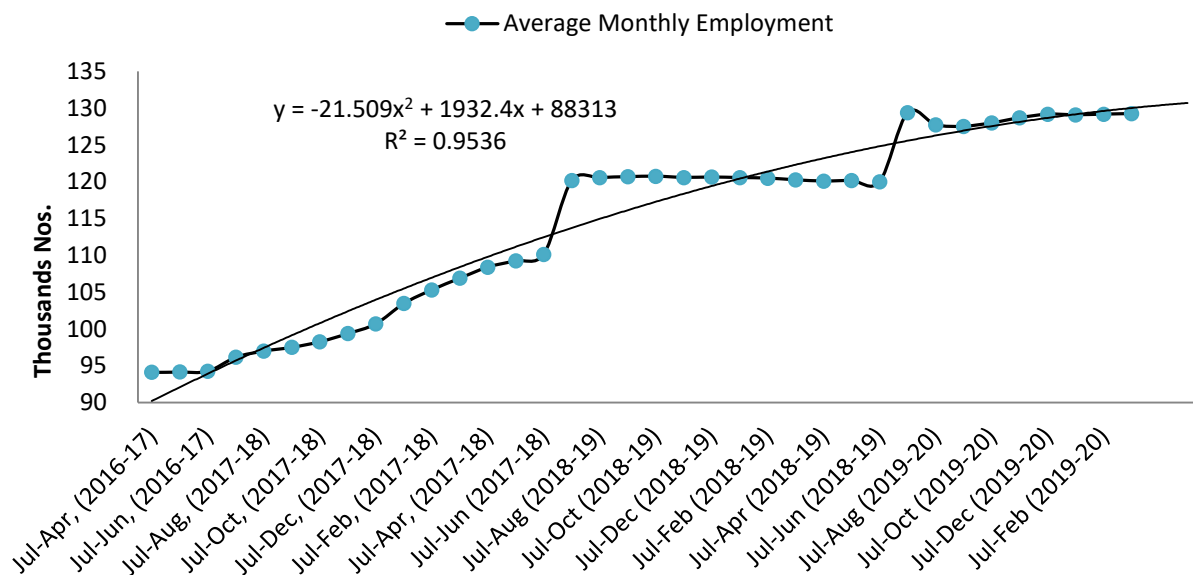


Figure 2: Trend of Average Monthly Employment in Large Scale Manufacturing Industries

Overall same directional trend is observed in the employment curve of Large Scale Manufacturing industries from previous months. But due to COVID-19, decreasing trend in employment may be observed in future. The fitted quadratic model with $R^2 = 95\%$ is also predicting decline in LSM Employment in coming months.

7. Data Tables

Table 2: Production of Selected Items Pertaining to Large-Scale Manufacturing Sector, March-2020 Vs February-2020

Sr. No.	Industrial Sector/ Items	No. of Industrial Units as per CMI 2005-06	WEIGHT (2005-06)	Unit of Quantity	Production		Index of Production in Mar:2020 with Feb: 2020
					Mar:2020	Feb:2020	
1.	VEGETABLE GHEE	35	1.61				
i.	VEGETABLE GHEE		1.11	M.Tons	33,827	33,094	102.2
ii.	COOKING OIL		0.50	M.Tons	17,619	16,018	110.0
2.	SUGAR	26	4.32				
i.	SUGAR		4.32	M.Tons	92,789	619,297	5.8
3.	TEA	7	1.23				
i.	TEA		1.23	M.Tons	5,128	4,223	121.4
4.	BEVERAGES	13	0.85				
i.	BEVERAGES		0.85	"000" NOs.	102,777	96,604	106.4
ii.	WATER*		0.85	"000" NOs.	14,196	16,412	86.5
5.	COTTON TEXTILE	133	13.65				
i.	COTTON YARN		9.10	M.Tons	16,464	16,667	98.8
ii.	COTTON FABRICS		4.13	"000" Sq. M	11,753	12,202	96.3
iii.	M.M.YARN		0.42	M.Tons	594	495	120.0
6.	LEATHER TANNING	30	0.29				
i.	UPPER LEATHER		0.07	"000" Sq. M.	685	1,068	64.1
ii.	WET BLUE TANNED		0.22	"000" Sq. M.	71	112	63.4
7.	COTTON GINNING & PRESSING	85	3.30				
i.	C.G.& PRESSING		3.30	Bales	586	20,283	2.9
8.	PAPER & PAPER BOARD	6	0.01				
i.	PRINTING PAPER		0.01	M.Tons	314	394	79.7
ii.	WRITTEN PAPER		0.01	M.Tons	274	358	76.5
iii.	PACKING & OTHER PAPER		0.01	M.Tons	1,517	1,215	124.9
iv.	ADVERTISING MATERIAL*		0.01	M.Tons	23	16	143.8
9.	PHARMACEUTICALS	78	6.37				
i.	TABLETS		1.67	"000" NOs.	2,130,146	2,142,345	99.4
ii.	LIQUIDS/SYRUPS		1.97	"000" Liters.	7,414	7,311	101.4
iii.	CAPSULES		1.36	"000" NOs.	305,265	329,312	92.7
iv.	INJECTIONS		1.22	"000" NOs.	112,547	116,289	96.8
v.	OINTMENT		0.15	KGs.	233,071	237,514	98.1
10.	ACID, ALKALIES & SALT	3	0.04				
i.	SULPHURIC ACID		0.04	M.Tons	1,536	2,378	64.6
11.	FERTILIZER	3	3.50				
i.	UREA		3.50	M.Tons	240,856	217,526	110.7
ii.	AMONIA		3.50	M.Tons	42,444	28,742	147.7
iii.	DAP*		3.50	M.Tons	38,223	27,406	139.5
12.	PAINTS & VARNISH	9	0.32				
i.	PAINTS		0.32	M.Tons	39	119	32.8
ii.	VARNISH		0.32	"000" Liters.	171	484	35.3

Sr. No.	Industrial Sector/ Items	No. of Industrial Units as per CMI 2005-06	WEIGHT (2005-06)	Unit of Quantity	Production		Index of Production in Mar:2020 with Feb: 2020
					Mar:2020	Feb:2020	
13.	SOAP	38	1.66				
i.	WASHING SOAP		1.66	M.Tons	5,393	5,080	106.2
ii.	DETERGENT POWDER		1.66	M.Tons	14,905	13,702	108.8
iii.	TOILET SOAP		1.66	M.Tons	1,979	1,882	105.2
iv.	TOOTH PASTE*		1.66	M.Tons	849	786	108.0
14.	PETROLEUM PRODUCTS	2	9.32				
i.	L.P.G		9.32	"000" Liters.	2,710	2,431	111.5
ii.	NAPHTHA SOLVENT		9.32	"000" Liters.	11,943	21,724	55.0
iii.	KEROSENE OIL		9.32	"000" Liters.	2,704	1,151	235.0
iv.	H.S.D		9.32	"000" Liters.	106,508	76,299	139.6
v.	FURNACE OIL		9.32	"000" Liters.	48,113	54,951	87.6
vi.	ASPHALT 80-100		9.32	"000" Liters.	-	754	0.0
vii.	ASPHALT 60-70		9.32	"000" Liters.	9,125	5,684	160.5
viii.	MOTOR SPRIT		9.32	"000" Liters.	21,190	16,303	130.0
ix.	JET FUEL		9.32	"000" Liters.	19,721	13,456	146.6
x.	LUBRICATING OIL		9.32	"000" Liters.	12,464	16,490	75.6
xi.	OTHERS*		0.00	"000" Liters.	22,382	69,028	32.4
15.	TYRES & TUBES	4	0.41				
i.	MOTOR TYRE		0.41	Nos.	167,858	209,826	80.0
ii.	MOTOR TUBE		0.41	Nos.	30,001	58,071	51.7
16.	CEMENT	11	3.86				
i.	CEMENT		3.86	M.Tons	157,133	147,805	106.3
17.	M.S.PRODUCTS	28	4.88				
i.	M.S PRODUCTS		4.88	M.Tons	4,431	4,878	90.8
18.	SAFETY RAZOR BLADE	1	0.40				
i.	SAFETY RAZOR BLAD		0.04	"000" NOs.	56,257	57,782	97.4
19.	SEWING MACHINES	3	0.25				
i.	SEWING MACHINES		0.25	Nos.	1,642	2,645	62.1
20.	ELEC. APPLIANCES	3	2.21				
i.	REFRIGERATORS		0.11	Nos.	35,460	47,968	73.9
ii.	AIR-CONDITIONERS		0.60	Nos.	7,633	12,651	60.3
iii.	DEEP FREEZERS		0.50	Nos.	453	2,333	19.4
iv.	WASHING MACHINES		0.50	Nos.	8,114	16,562	49.0
v.	MICROWAVE OVEN*		0.50	Nos.	15,582	34,529	45.1
21.	AUTOMOBILE	17	11.15				
i.	TRUCKS		2.71	Nos.	307	424	72.4
ii.	BUSES		0.77	Nos.	32	26	123.1
iii.	LCV'S		2.50	Nos.	1,075	2,207	48.7
iv.	MOTOR CYCLES		2.06	Nos.	95,552	131,745	72.5
v.	TRACTORS		0.25	Nos.	2,858	4,235	67.5
vi.	CARS		0.50	Nos.	6,432	17,576	36.6
vii.	VANS & JEEPS*		1.18	Nos.	337	630	53.5
viii.	THREE WHEELERS*		1.18	Nos.	3,722	5,661	65.7
Grand Total		535	69.63				

*New items are reporting from selected companies added since July (2019-20)

Table 3: Production of Selected Items Pertaining to Large-Scale Manufacturing Sector, March-2020 Vs March-2019

Sr. No.	Industrial Sector/ Items	No. of Industrial Units as per CMI 2005-06	WEIGHT (2005-06)	Unit of Quantity	Production		Index of Production in Mar:2020 with Mar:2019
					Mar:2020	Mar:2019	
1.	VEGETABLE GHEE	35	1.61				
i.	VEGETABLE GHEE		1.11	M.Tons	33,827	34,955	96.8
ii.	COOKING OIL		0.50	M.Tons	17,619	12,783	137.8
2.	SUGAR	26	4.32				
i.	SUGAR		4.32	M.Tons	92,789	345,346	10.4
3.	TEA	7	1.23				
i.	TEA		1.23	M.Tons	5,128	6,086	84.3
4.	BEVERAGES	13	0.85				
i.	BEVERAGES		0.85	"000" NOs.	102,777	91,371	112.5
ii.	WATER*		0.85	"000" NOs.	14,196		
5.	COTTON TEXTILE	133	13.65				
i.	COTTON YARN		9.10	M.Tons	16,464	25,083	65.6
ii.	COTTON FABRICS		4.13	"000" Sq. M	11,753	12,106	97.1
iii.	M.M.YARN		0.42	M.Tons	594	1,557	38.2
6.	LEATHER TANNING	30	0.29				
i.	UPPER LEATHER		0.07	"000" Sq. M.	685	1,563	43.8
ii.	WET BLUE TANNED		0.22	"000" Sq. M.	71	110	64.5
7.	COTTON GINNING & PRESSING	85	3.30				
i.	C.G.& PRESSING		3.30	Bales	586	1,709	34.3
8.	PAPER & PAPER BOARD	6	0.01				
i.	PRINTING PAPER		0.01	M.Tons	314	329	95.4
ii.	WRITTEN PAPER		0.01	M.Tons	274	315	87.0
iii.	PACKING & OTHER PAPER		0.01	M.Tons	1,517	1,721	88.1
iv.	ADVERTISING MATERIAL*		0.01	M.Tons	23		
9.	PHARMACEUTICALS	78	6.37				
i.	TABLETS		1.67	"000" NOs.	2,130,146	2,266,267	94.0
ii.	LIQUIDS/SYRUPS		1.97	"000" Liters.	7,414	7,683	96.5
iii.	CAPSULS		1.36	"000" NOs.	305,265	346,846	88.0
iv.	INJECTIONS		1.22	"000" NOs.	112,547	128,251	87.8
v.	OINTMENT		0.15	KGs.	233,071	214,749	108.5
10.	ACID, ALKALIES & SALT	3	0.04				
i.	SULPHURIC ACID		0.04	M.Tons	1,536	2,856	53.8
11.	FERTILIZER	3	3.50				
i.	UREA		3.50	M.Tons	240,856	189,974	126.8
ii.	AMONIA		3.50	M.Tons	42,444	37,917	111.9
iii.	DAP*		3.50	M.Tons	38,223		
12.	PAINTS & VARNISH	9	0.32				
i.	PAINTS		0.32	M.Tons	39	119	32.8
ii.	VARNISH		0.32	"000" Liters.	171	507	33.7

Sr. No.	Industrial Sector/ Items	No. of Industrial Units as per CMI 2005-06	WEIGHT (2005-06)	Unit of Quantity	Production		Index of Production in Mar:2020 with Mar:2019
					Mar:2020	Mar:2019	
13.	SOAP	38	1.66				
i.	WASHING SOAP		1.66	M.Tons	5,393	4,587	117.6
ii.	DETERGENT POWDER		1.66	M.Tons	14,905	14,587	102.2
iii.	TOILET SOAP		1.66	M.Tons	1,979	1,729	114.5
iv.	TOOTH PASTE*		1.66	M.Tons	849		
14.	PETROLEUM PRODUCTS	2	9.32				
i.	L.P.G		9.32	"000" Liters.	2,710	3,240	83.7
ii.	NAPHTHA SOLVENT		9.32	"000" Liters.	11,943	25,742	46.4
iii.	KEROSENE OIL		9.32	"000" Liters.	2,704	301	898.5
iv.	H.S.D		9.32	"000" Liters.	106,508	135,244	78.8
v.	FURNACE OIL		9.32	"000" Liters.	48,113	70,952	67.8
vi.	ASPHALT 80-100		9.32	"000" Liters.	-	8,429	0.0
vii.	ASPHALT 60-70		9.32	"000" Liters.	9,125	-	
viii.	MOTOR SPRIT		9.32	"000" Liters.	21,190	16,505	128.4
ix.	JET FUEL		9.32	"000" Liters.	19,721	11,613	169.8
x.	LUBRICATING OIL		9.32	"000" Liters.	12,464	-	
xi.	OTHERS*		0.00	"000" Liters.	22,382	-	
15.	TYRES & TUBES	4	0.41				
i.	MOTOR TYRE		0.41	Nos.	167,858	273,474	61.4
ii.	MOTOR TUBE		0.41	Nos.	30,001	60,807	49.3
16.	CEMENT	11	3.86				
i.	CEMENT		3.86	M.Tons	157,133	109,541	143.4
17.	M.S.PRODUCTS	28	4.88				
i.	M.S PRODUCTS		4.88	M.Tons	4,431	3,863	114.7
18.	SAFETY RAZOR BLADE	1	0.40				
i.	SAFETY RAZOR BLAD		0.04	"000" NOs.	56,257	71,441	78.7
19.	SEWING MACHINES	3	0.25				
i.	SEWING MACHINES		0.25	Nos.	1,642	3,100	53.0
20.	ELEC. APPLIANCES	3	2.21				
i.	REFRIGERATORS		0.11	Nos.	35,460	52,914	67.0
ii.	AIR-CONDITIONERS		0.60	Nos.	7,633	15,489	49.3
iii.	DEEP FREEZERS		0.50	Nos.	453	2,309	19.6
iv.	WASHING MACHINES		0.50	Nos.	8,114	15,683	51.7
v.	MICROWAVE OVEN*		0.50	Nos.	15,582		
21.	AUTOMOBILE	17	11.15				
i.	TRUCKS		2.71	Nos.	307	348	88.2
ii.	BUSES		0.77	Nos.	32	47	68.1
iii.	LCV'S		2.50	Nos.	1,075	1,768	60.8
iv.	MOTOR CYCLES		2.06	Nos.	95,552	137,712	69.4
v.	TRACTORS		0.25	Nos.	2,858	5,578	51.2
vi.	CARS		0.50	Nos.	6,432	18,365	35.0
vii.	VANS & JEEPS*		1.18	Nos.	337		
viii.	THREE WHEELERS*		1.18	Nos.	3,722		
Grand Total		535	69.63				

*New items are reporting from selected companies added since July (2019-20)

Table 4: Cumulative Production of Selected Items Pertaining to Large-Scale Manufacturing Sector, 2019-20 (Jul to Mar) Vs 2018-19 (Jul to Mar)

Sr. No.	Industrial Sector/ Items	No. of Industrial Units as per CMI 2005-06	WEIGHT (2005-06)	Unit of Quantity	Production		Index of Production in 2019-20 (Jul-Mar) with 2018-19 (Jul-Mar)
					2019-20 (Jul-Mar)	2018-19 (Jul-Mar)	
1.	VEGETABLE GHEE	35	1.61				
i.	VEGETABLE GHEE		1.11	M.Tons	306,358	308,601	99.3
ii.	COOKING OIL		0.50	M.Tons	141,078	140,840	100.2
2.	SUGAR	26	4.32				
i.	SUGAR		4.32	M.Tons	1,410,016	1,795,962	75.3
3.	TEA	7	1.23				
i.	TEA		1.23	M.Tons	40,830	64,110	63.7
4.	BEVERAGES	13	0.85				
i.	BEVERAGES		0.85	"000" NOs.	773,659	901,603	85.8
ii.	WATER*		0.85	"000" NOs.	139,149		
5.	COTTON TEXTILE	133	13.65				
i.	COTTON YARN		9.10	M.Tons	162,163	195,038	83.1
ii.	COTTON FABRICS		4.13	"000" Sq. M	96,984	114,307	84.8
iii.	M.M.YARN		0.42	M.Tons	7,921	19,827	40.0
6.	LEATHER TANNING	30	0.29				
i.	UPPER LEATHER		0.07	"000" Sq. M.	10,140	11,259	90.1
ii.	WET BLUE TANNED		0.22	"000" Sq. M.	928	940	98.8
7.	COTTON GINNING & PRESSING	85	3.30				
i.	C.G.& PRESSING		3.30	Bales	3,472,114	4,148,976	83.7
8.	PAPER & PAPER BOARD	6	0.01				
i.	PRINTING PAPER		0.01	M.Tons	3,380	2,788	121.2
ii.	WRITTEN PAPER		0.01	M.Tons	2,664	2,734	97.5
iii.	PACKING & OTHER PAPER		0.01	M.Tons	14,175	16,133	87.9
iv.	ADVERTISING MATERIAL*		0.01	M.Tons	214		
9.	PHARMACEUTICALS	78	6.37				
i.	TABLETS		1.67	"000" NOs.	18,500,929	18,972,867	97.5
ii.	LIQUIDS/SYRUPS		1.97	"000" Liters.	58,198	67,881	85.7
iii.	CAPSULES		1.36	"000" NOs.	2,457,086	2,336,681	105.2
iv.	INJECTIONS		1.22	"000" NOs.	831,967	838,561	99.2
v.	OINTMENT		0.15	KGs.	2,008,518	2,063,102	97.4
10.	ACID, ALKALIES & SALT	3	0.04				
i.	SULPHURIC ACID		0.04	M.Tons	21,479	22,754	94.4
11.	FERTILIZER	3	3.50				
i.	UREA		3.50	M.Tons	2,042,113	1,845,316	110.7
ii.	AMONIA		3.50	M.Tons	496,522	316,984	156.6
iii.	DAP*		3.50	M.Tons	549,020		
12.	PAINTS & VARNISH	9	0.32				
i.	PAINTS		0.32	M.Tons	1,018	1,026	99.2
ii.	VARNISH		0.32	"000" Liters.	3,755	4,426	84.8

Sr. No.	Industrial Sector/ Items	No. of Industrial Units as per CMI 2005-06	WEIGHT (2005-06)	Unit of Quantity	Production		Index of Production in 2019-20 (Jul-Mar) with 2018-19 (Jul-Mar)
					2019-20 (Jul-Mar)	2018-19 (Jul-Mar)	
13.	SOAP	38	1.66				
i.	WASHING SOAP		1.66	M.Tons	43,326	40,164	107.9
ii.	DETERGENT POWDER		1.66	M.Tons	127,906	128,108	99.8
iii.	TOILET SOAP		1.66	M.Tons	17,045	18,440	92.4
iv.	TOOTH PASTE*		1.66	M.Tons	6,817		
14.	PETROLEUM PRODUCTS	2	9.32				
i.	L.P.G		9.32	"000" Liters.	18,114	23,865	75.9
ii.	NAPHTHA SOLVENT		9.32	"000" Liters.	204,326	227,371	89.9
iii.	KEROSENE OIL		9.32	"000" Liters.	8,426	6,036	139.6
iv.	H.S.D		9.32	"000" Liters.	948,229	1,068,758	88.7
v.	FURNACE OIL		9.32	"000" Liters.	527,888	638,212	82.7
vi.	ASPHALT 80-100		9.32	"000" Liters.	114,861	68,106	168.7
vii.	ASPHALT 60-70		9.32	"000" Liters.	29,263	25,353	115.4
viii.	MOTOR SPRIT		9.32	"000" Liters.	125,766	227,997	55.2
ix.	JET FUEL		9.32	"000" Liters.	111,700	125,187	89.2
x.	LUBRICATING OIL		9.32	"000" Liters.	41,702	49,842	83.7
xi.	OTHERS*		0.00	"000" Liters.	311,382	1,186	
15.	TYRES & TUBES	4	0.41				
i.	MOTOR TYRE		0.41	Nos.	1,871,235	2,012,947	93.0
ii.	MOTOR TUBE		0.41	Nos.	448,126	515,419	86.9
16.	CEMENT	11	3.86				
i.	CEMENT		3.86	M.Tons	1,181,879	992,040	119.1
17.	M.S.PRODUCTS	28	4.88				
i.	M.S PRODUCTS		4.88	M.Tons	39,625	34,234	115.7
18.	SAFETY RAZOR BLADE	1	0.40				
i.	SAFETY RAZOR BLAD		0.04	"000" NOs.	563,555	626,010	90.0
19.	SEWING MACHINES	3	0.25				
i.	SEWING MACHINES		0.25	Nos.	24,827	24,741	100.3
20.	ELEC. APPLIANCES	3	2.21				
i.	REFRIGERATORS		0.11	Nos.	394,748	405,734	97.3
ii.	AIR-CONDITIONERS		0.60	Nos.	48,859	120,735	40.5
iii.	DEEP FREEZERS		0.50	Nos.	7,875	12,092	65.1
iv.	WASHING MACHINES		0.50	Nos.	194,584	144,110	135.0
v.	MICROWAVE OVEN*		0.50	Nos.	262,909		
21.	AUTOMOBILE	17	11.15				
i.	TRUCKS		2.71	Nos.	2,781	5,027	55.3
ii.	BUSES		0.77	Nos.	422	649	65.0
iii.	LCV'S		2.50	Nos.	11,840	19,131	61.9
iv.	MOTOR CYCLES		2.06	Nos.	1,124,360	1,299,609	86.5
v.	TRACTORS		0.25	Nos.	24,437	37,457	65.2
vi.	CARS		0.50	Nos.	96,345	169,118	57.0
vii.	VANS & JEEPS*		1.18	Nos.	3,447		
viii.	THREE WHEELERS*		1.18	Nos.	31,367		
Grand Total		535	69.63				

*New items are reporting from selected companies added since July (2019-20)

Table 5: Employment in Selected Large-Scale Manufacturing Sector, March-2020 Vs February-2020

Sr. No.	Industrial Sector/ Items	No. of Industrial Units as per CMI 2005-06	Total Employees		Production Worker	
			Mar:2020	Feb:2020	Mar:2020	Feb:2020
1	<u>VEGETABLE GHEE</u>	35	2,258	2,258	1,574	1,574
2	<u>SUGAR</u>	26	10,511	10,494	6,251	6,283
3	<u>TEA</u>	7	3,129	3,117	2,667	2,655
4	<u>BEVERAGES</u>	13	3,638	3,395	1,547	1,400
5	<u>COTTON TEXTILE</u>	133	53,454	53,452	41,203	41,202
6	<u>LEATHER TANNING</u>	30	6,344	6,344	5,605	5,605
7	<u>PAPER & PAPER BOARD</u>	6	2,238	2,246	1,596	1,600
8	<u>PHARMACEUTICALS</u>	78	6,269	6,271	3,660	3,659
9	<u>ACID, ALKALIES & SALT</u>	3	34	34	22	22
10	<u>FERTILIZER</u>	3	986	986	821	821
11	<u>PAINTS & VARNISH</u>	9	103	103	54	54
12	<u>SOAP</u>	38	2,084	2,086	1,734	1,817
13	<u>PETROLEUM PRODUCTS</u>	2	434	435	337	338
14	<u>TYRES & TUBES</u>	4	5,604	5,724	4,044	4,044
15	<u>CEMENT</u>	11	4,387	4,378	1,872	1,868
16	<u>STEEL PRODUCTS</u>	1	9,149	9,149	6,191	6,191
17	<u>M.S PRODUCTS</u>	28	827	827	670	670
18	<u>SAFETY RAZOR BLAD</u>	1	288	288	251	251
19	<u>SEWING MACHINES</u>	3	410	410	354	354
20	<u>ELEC. APPLIANCES</u>	3	750	750	663	663
21	<u>AUTOMOBILE</u>	17	14,877	14,877	6,865	6,912
22	<u>STORAGE BATTERIES</u>	4	2,116	2,121	1,652	2,470
	Grand Total	455	129,889	129,745	89,634	90,453

Table 6: Employment in Selected Large-Scale Manufacturing Sector, March-2020 Vs March-2019

Sr. No.	Industrial Sector/ Items	No. of Industrial Units as per CMI 2005-06	Employees		Production Worker	
			Mar:2020	Mar:2019	Mar:2020	Mar:2019
1	<u>VEGETABLE GHEE</u>	35	2,258	2,218	1,574	1,635
2	<u>SUGAR</u>	26	10,511	9,309	6,251	5,904
3	<u>TEA</u>	7	3,129	140	2,667	96
4	<u>BEVERAGES</u>	13	3,638	3,372	1,547	1,723
5	<u>COTTON TEXTILE</u>	133	53,454	57,065	41,203	44,116
6	<u>LEATHER TANNING</u>	30	6,344	5,589	5,605	4,724
7	<u>PAPER & PAPER BOARD</u>	6	2,238	507	1,596	433
8	<u>PHARMACEUTICALS</u>	78	6,269	9,665	3,660	5,920
9	<u>ACID, ALKALIES & SALT</u>	3	34	34	22	22
10	<u>FERTILIZER</u>	3	986	336	821	247
11	<u>PAINTS & VARNISH</u>	9	103	103	54	54
12	<u>SOAP</u>	38	2,084	3,131	1,734	2,758
13	<u>PETROLEUM PRODUCTS</u>	2	434	416	337	344
14	<u>TYRES & TUBES</u>	4	5,604	6,044	4,044	4,240
15	<u>CEMENT</u>	11	4,387	5,103	1,872	3,074
16	<u>STEEL PRODUCTS</u>	1	9,149	9,972	6,191	6,866
17	<u>M.S PRODUCTS</u>	28	827	827	670	670
18	<u>SAFETY RAZOR BLAD</u>	1	288	288	251	257
19	<u>SEWING MACHINES</u>	3	410	151	354	110
20	<u>ELECTRICAL APPARATUS</u>	3	750	750	663	663
21	<u>AUTOMOBILE</u>	17	14,877	3,321	6,865	2,596
22	<u>STORAGE BATTERIES</u>	4	2,116		1,652	
	Grand Total	455	129,889	118,341	89,634	86,452

**Table 7: Average Monthly Employment in Selected Large Scale Manufacturing Sector,
2019-20 (Jul to Mar) Vs 2018-19 (Jul to Mar)**

Sr. No.	Industrial Sector/ Items	No. of Industrial Units as per CMI 2005-06	Average Monthly Total Employment		Average Monthly Production Worker	
			(Jul-Mar) 2019-20	(Jul-Mar) 2018-19	(Jul-Mar) 2019-20	(Jul-Mar) 2018-19
1	<u>VEGETABLE GHEE</u>	35	2,235	2,395	1,610	1,797
2	<u>SUGAR</u>	26	8,309	9,135	5,507	5,856
3	<u>TEA</u>	7	3,115	142	2,134	99
4	<u>BEVERAGES</u>	13	3,013	4,037	1,118	1,934
5	<u>COTTON TEXTILE</u>	133	54,362	57,265	42,252	43,731
6	<u>LEATHER TANNING</u>	30	6,550	5,777	5,557	4,898
7	<u>PAPER & PAPER BOARD</u>	6	2,254	538	1,630	468
8	<u>PHARMACEUTICALS</u>	78	6,213	9,616	3,451	6,208
9	<u>ACID, ALKALIES & SALT</u>	3	34	34	22	22
10	<u>FERTILIZER</u>	3	966	341	801	252
11	<u>PAINTS & VARNISH</u>	9	106	106	56	54
12	<u>SOAP</u>	38	2,529	3,342	2,208	2,973
13	<u>PETROLEUM PRODUCTS</u>	2	434	419	340	346
14	<u>TYRES & TUBES</u>	4	5,833	6,123	4,114	4,268
15	<u>CEMENT</u>	11	4,570	5,169	1,940	2,280
16	<u>STEEL PRODUCTS</u>	1	9,311	10,286	6,310	7,150
17	<u>M.S PRODUCTS</u>	28	827	940	670	772
18	<u>SAFETY RAZOR BLAD</u>	1	288	288	253	258
19	<u>SEWING MACHINES</u>	3	414	149	359	108
20	<u>ELECTRICAL APPARATUS</u>	3	750	750	663	663
21	<u>AUTOMOBILE</u>	17	15,002	3,395	6,884	2,641
22	<u>STORAGE BATTERIES</u>	4	2,126	-	1,653	-
	Grand Total	455	129,240	120,248	89,533	86,777

Annexure – A: Proforma/ Questionnaire



**GOVERNMENT OF SINDH
PLANNING & DEVELOPMENT DEPARTMENT
BUREAU OF STATISTICS**

www.sindhbos.gov.pk

Street-13, Block-8, Kehkashan Clifton, Karachi-75600, P.O.Box# 3879



021-99251259



ddindustries.sindhbos@gmail.com / m.kazimjafri@hotmail.com

The information supplied will be kept strictly confidential and will be used for statistical purpose only.	REPORT FOR	
	MONTH	YEAR

MONTHLY SURVEY OF INDUSTRIAL PRODUCTION AND EMPLOYMENT IN SINDH.

INDUSTRY CODE

--	--	--	--	--

Estb: Code

--	--	--	--

LOCATION CODE

--	--

PART-I GENERAL PARTICULARS

i) Name and Address of the Establishment _____

ii) Name, Designation, Telephone, Cell and _____

Fax# of the person to be contacted. _____

iii) Website and E-mail Address _____

PART-II PRODUCTION DATA

S.No	Major Items of Production	Code	Unit of Quantity	Code	Previous Month	Current Month	Reasons of Growth/ Decline

PART-III WORKING DAYS AND EMPLOYMENT

i) No. of days establishment worked _____

ii) No. of Production workers. Male _____ Female _____ Total _____

iii) No. of Non production workers Male _____ Female _____ Total _____

TOTAL (ii + iii)

Male _____ Female _____ Total _____

Note: Production Workers mean those who are directly associated with production. It includes those engaged in manufacturing, assembling packing repairing etc. Working Supervisor should also be included, Non production worker mean those who are not directly associated with production it includes Administrative Clerical and Services Staff like Chowkidar, Driver and Sweeper.

Signature _____

Designation _____

Date _____

Annexure – B: Important Definitions

Large Scale Manufacturing Industries

Establishments where 10 or more employees are working are called large Scale Manufacturing Industries.

Employees

Employees mean all persons whether part time or full time who work in the establishments and receive remuneration in cash or in kind. Working proprietors, unpaid family workers and home workers are excluded from the category of employee. There are two types of employees Production Workers and Non-Production Workers.

- **Production Workers**

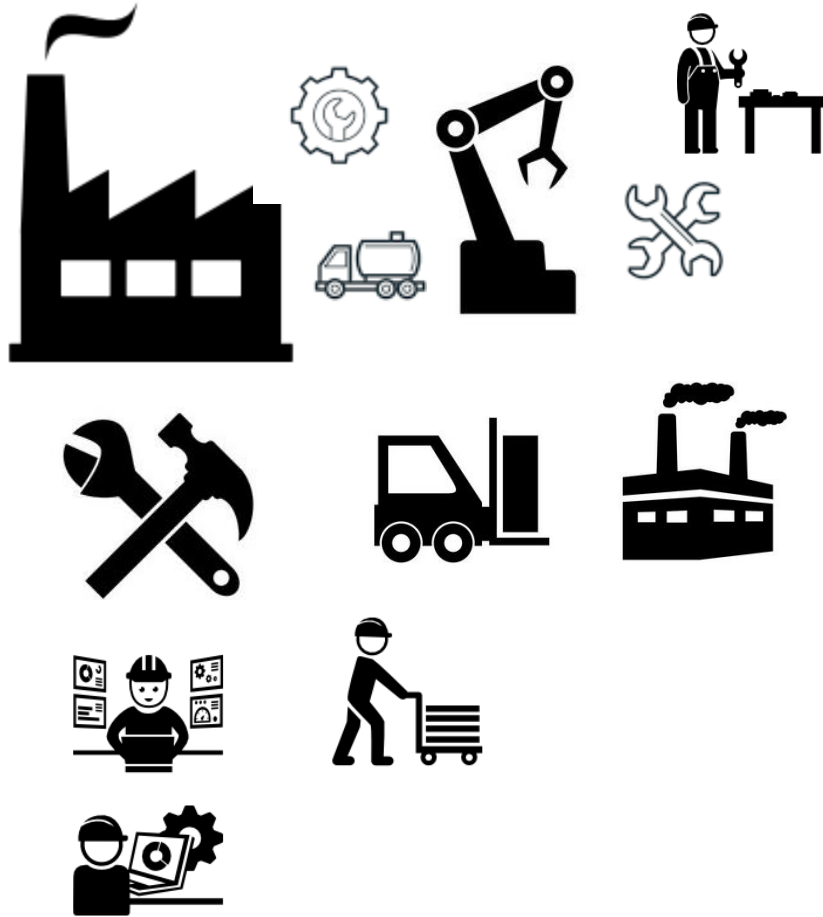
Are engaged in work directly associated with production like manufacturing, assembling, packing, repairing etc. Working supervisors and persons engaged for repairs and maintenance are also included.

- **Non-Production Workers**

Include administrative and professional employees, white-collar office employees, drivers, watchmen/guards, peons, sweepers, office boys, etc.

Annexure – C: Data Users

- Ministry of Industries & Production, Government of Pakistan.
- Planning & Development Department, Government of Sindh.
- Pakistan Bureau of Statistics, Government of Pakistan.
- State Bank of Pakistan.
- Provincial Bureaus of Statistics, Punjab, KPK and Baluchistan.
- Research & Training Wing, Planning & Development Department, Government of Sindh.



(Industries Section)
Bureau of Statistics
Planning & Development
Department
Government of Sindh
m.kazimjafri@hotmail.com

ST:13 Block-8 Kehkashan Clifton, Ch. Kahliqz-zaman road, Karachi
Ph. 021-99251259, Email: ddindustries.sindhbos@gmail.com
www.sindhbos.gov.pk