

MONTHLY SURVEY OF INDUSTRIAL PRODUCTION & EMPLOYMENT IN SINDH

May, 2020

Industries Section, BOS



**BUREAU OF STATISTICS
PLANNING & DEVELOPMENT DEPARTMENT
GOVERNMENT OF SINDH**

FOR OFFICIAL USE ONLY

Sindh Monthly Survey of Industrial Production & Employment (MIPE)

May, 2020



Bureau of Statistics
Planning & Development Department
Government of Sindh

www.sindhbos.gov.pk
ddindustries.sindhbos.gov.pk

ST:13 Block-8 Kehkashan Clifton, Ch. Kahliquz-zaman road, Karachi Ph. 021-99251259

Preface

Monthly Survey of Industrial Production and Employment (MIPE) is being conducted/ published by Sindh Bureau of Statistics on regular basis since 1970s. This report provides important statistics in respect of industrial production & employment of large Scale Manufacturing (LSM) industries in Sindh.

This report contains information on 61 items manufactured in 22 selected large scale industrial sectors covering 535 industrial establishments (selection on the basis of CMI 2005-06). These industries account for 69.6% of total value added of large scale manufacturing sector in Sindh.

MIPE Report provides information regarding General Index and Quantum Index of Manufacturing (QIM) to base period 2005-06, and analytical analysis on the current status of production and employment in manufacturing sector.

All the efforts are made to improve the industrial statistics and hope this report would prove useful to policy makers, planners, researchers and other data users. Suggestion/ recommendations from the users will always be welcomed and appreciated.

Director General
Bureau of Statistics
Planning & Development Department
Government of Sindh

Contents

PREFACE	2
CONTENTS	3
LIST OF TABLES	4
LIST OF FIGURES	4
LIST OF EQUATIONS	4
MIPE TEAM (INDUSTRIES SECTION)	5
1. INTRODUCTION	6
2. QUESTIONNAIRE/ PROFORMA	7
3. METHODOLOGY	7
4. EDITING	7
5. QUANTUM INDEX OF MANUFACTURING (QIM)	8
6. REPORT ANALYSIS	9
7. DATA TABLES	11
ANNEXURE – A: PROFORMA/ QUESTIONNAIRE	20
ANNEXURE – B: IMPORTANT DEFINITIONS	21
ANNEXURE – C: DATA USERS	22

List of Tables

TABLE 1: SERIES OF QUANTUM INDEX OF MANUFACTURING (QIM) AT (2005-06=100)	9
TABLE 2: PRODUCTION OF SELECTED ITEMS PERTAINING TO LARGE-SCALE MANUFACTURING SECTOR, MAY-2020 VS APRIL-2020 ...	11
TABLE 3: PRODUCTION OF SELECTED ITEMS PERTAINING TO LARGE-SCALE MANUFACTURING SECTOR, MAY-2020 VS MAY-2019	13
TABLE 4: CUMULATIVE PRODUCTION OF SELECTED ITEMS PERTAINING TO LARGE-SCALE MANUFACTURING SECTOR,	15
TABLE 5: EMPLOYMENT IN SELECTED LARGE-SCALE MANUFACTURING SECTOR, MAY-2020 VS APRIL-2020	17
TABLE 6: EMPLOYMENT IN SELECTED LARGE-SCALE MANUFACTURING SECTOR, MAY-2020 VS MAY-2019	18
TABLE 7: AVERAGE MONTHLY EMPLOYMENT IN SELECTED LARGE SCALE MANUFACTURING SECTOR,	19

List of Figures

FIGURE 1: TREND OF QUANTUM INDEX OF LARGE SCALE MANUFACTURING INDUSTRIES AT BASE YEAR 2005-06	10
FIGURE 2: TREND OF AVERAGE MONTHLY EMPLOYMENT IN LARGE SCALE MANUFACTURING INDUSTRIES	10

List of Equations

EQUATION 1 LASPAYER'S INDEX	8
-----------------------------------	---

Team Lead:

Muhammad Kazim Jafri | Deputy Director

Team Members:

Ms. Rukhsana Aziz | Statistical Officer

Ms. FaaezaAtiq | Statistical Officer

Support in Data Collection and Compilation:

Mr. Muhammad YounusBukhari | Jr. Stenographer

Mr. Muhammad AkramBhatti | Statistical Computer

1. Introduction

Industrial Statistical is very essential tool to track industrial growth and implementation of policies in right directions. This sector has great importance for economic development of country. The composition of Pakistan's economy, Agriculture Sector is 20%, Industries Sector is 21% and Services Sector is 59% (PBS).

From the share of industrial sector 13.6% are manufacturing and more specifically 11% is Large Scale Manufacturing (LSM) Sector. The role of Sindh province in the Large Scale Manufacturing is very vital. According to Karachi Chamber of Commerce and Industry (KCCI), Karachi is the largest metropolitan city of Pakistan and produces 15% with an annual Gross Domestic Product (GDP). From Sindh Business Register (SBR) of Manufacturing Industries recently developed by Sindh Bureau of Statistics, Planning & Development Department around 67% establishments/factories are located in Karachi and 33% are in other districts to Sindh.

It is historical fact that countries with strong industrial sector have showed more economic growth and development industrial sector have shown improvement in national income and promoted living standard of population. A fresh industrial policy of Pakistan is also promotes employment, value-added exports and import substitution

For the timely and quality industrial statistics Bureau of Statistics, Sindh Planning & Development Department conducts Monthly Survey of Industrial Production and Employment (MIPE). This survey collects information on 61 items manufactured in 22 selected large scale Industrial sectors from 535 establishments/ factories in Sindh. The sample of 535 establishments / factories was drawn from the last Census of Manufacturing Industries (CMI), 2005-06. These industries account for 69.6% of total value added in terms of production during 2005-06, Census of Manufacturing Industries. In addition to collection, compilation, tabulation and processing of manufacturing data, Bureau of Statistics also computes monthly Quantum Index of Manufacturing by using the weights of production. The quantum index is an essential indicator to gauge to aggregate monthly production of province.

2. Questionnaire/ Proforma

A questionnaire/ Proforma is a research instrument consisting of a series of questions and other prompts for the purpose of gathering information from respondents. A pre-tested questionnaire is used for the data collection of industrial inputs related to employment and production, attached at **Annex-A**.

3. Methodology

The basic method of data collection for Sindh MIPE is the posting/ mailing of MIPE Questionnaires. More than 70% monthly returns are received to this Bureau through mail from industrial units. The non-responding or remaining establishments are visited by the officers/ officials of this Bureau, besides this the method of emailing, fax and telephonic approach are also used for collection of monthly returns and increase the response rate.

4. Editing

All the received returns are scrutinized for accuracy and consistency with previous data by the Industries Section of this Bureau. As per *Unit Calculation Sheet* different units of similar products are converted into the reporting units. In case of huge discrepancy between current and previous returns the factory management is approached to rectify that figures. In the absence establishment's return or non-availability of concerned person the average production of last month or the last month information is repeated for equivalence.

5. Quantum Index of Manufacturing (QIM)

A quantum index is an index based on quantity units of goods such as number or weight. Sindh bureau of Statistics is computing Index on Industrial Production using 2005-06 as base year. Index Series is generated by using Laspayer's Index.

$$QIM = \frac{\sum_{i=1}^n \frac{q_{im}}{q_{i0}} w_i}{\sum_{i=1}^n w_i} \times 100$$

Equation 1 Laspayer's Index

q_{im} = Production of i^{th} item during the current month

q_{i0} = Average Production of the same i^{th} item in the base period (2005-06)

w_i = Weight of the i^{th} item in the base period (2005-06)

$\sum_{i=1}^n w_i$ = Total Weight of 22 large scale industrial sectors covering 535 establishments in the base period with respect to the total value added of all the industries covered in CMI in the base year 2005-06.

Report Analysis

Summary findings on the basis of Index of Industrial Production are as follows:

- Overall Production in May, 2020 is gradually increased after lockdown of factories by 16% as compared to last month(i.e. April, 2020)
- Overall Production in May 2020 is followed sharply decreasing trend by 16% with the corresponding month of last year (i.e. April, 2019)
- Cumulative production from July to May(2019-20) is also decreased by 2.84% as the cumulative production from July to May (2018-19)
- Employment during May, 2020 is decreased by almost 4% as compared to previous month (i.e. April, 2020)
- Employment during May, 2020 is significantly decreased by 9.4% than May, 2019.
- Average monthly employment during the period of July-May (2019-20) is 4.8% increased as compared to the corresponding period of July- May (2018-19)

Table 1: Series of Quantum Index of Manufacturing (QIM) at (2005-06=100)

Month/ Year	2015-16	2016-17	2017-18	2018-19	2019-20
July	255.7	284.0	327.0	290.8	259.7
August	266.0	287.7	336.4	265.5	220.9
September	274.2	281.5	330.9	311.3	266.7
October	247.0	291.4	355.7	287.0	277.0
November	283.7	317.1	343.2	273.3	280.3
December	261.7	302.8	341.5	265.2	223.7
January	297.4	286.1	374.0	321.3	263.8
February	293.2	283.3	324.5	309.0	313.2
March	253.9	275.6	341.4	279.7	258.2
April	250.6	276.8	338.5	258.2	172.1
May	254.4	283.9	311.3	248.2	199.8
June	259.0	258.1	307.4	257.6	
Average (Geometric Mean)	265.9	285.4	335.5	279.7	

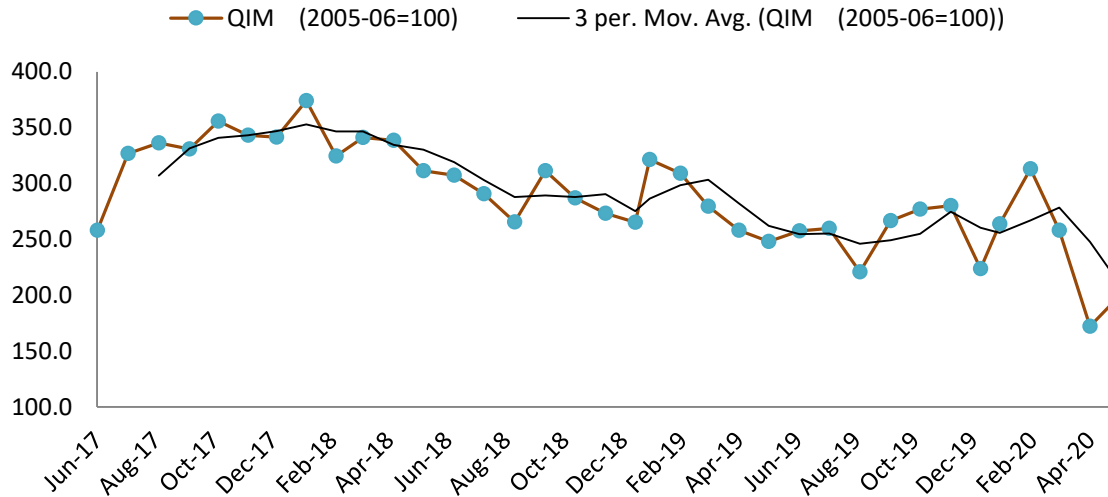


Figure 1: Trend of Quantum Index of Large Scale Manufacturing Industries at base year 2005-06

In coming four months, Sugar and Cotton ginning’s season is closed therefore production will zero in these sector. Quantum index of Large Manufacturing Industries slightly increased after severe lockdown due to COVID-19. Paints & Varnish, Petroleum, Motor Tyres & Tubes, Electrical Appliance, Automobile, Sewing machine, Paper & Paper board sectors are badly effected due to COVID-19.

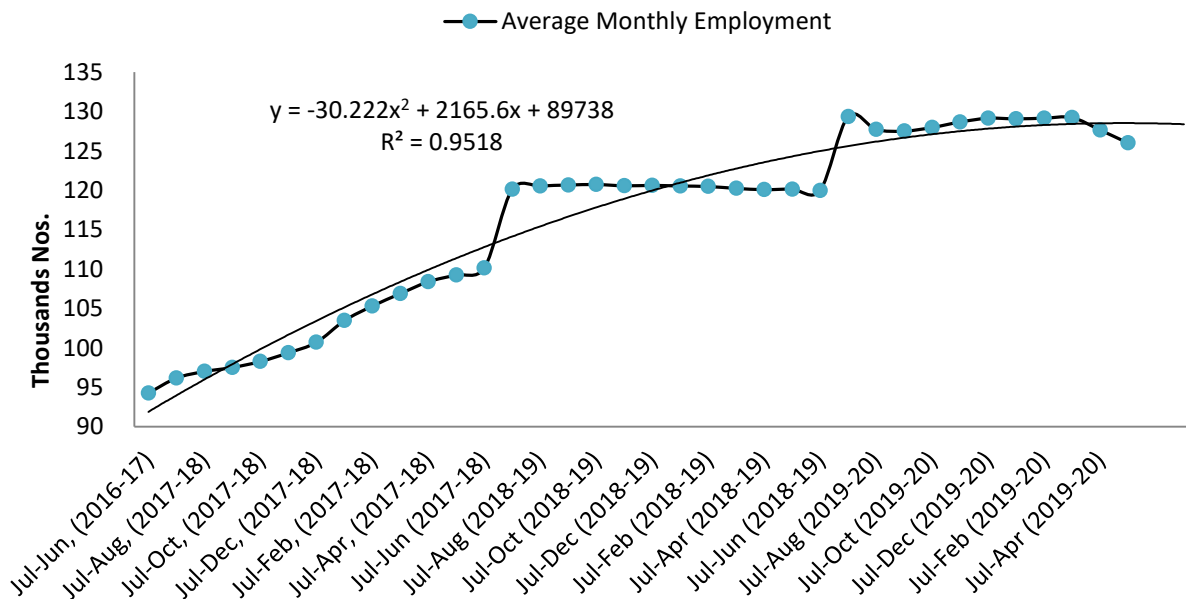


Figure 2: Trend of Average Monthly Employment in Large Scale Manufacturing Industries

The employment curve of Large Scale Manufacturing industries is declined from last three months. Due to COVID-19, most of the factories reduced their staff as per requirement in many sectors. In current circumstances, decreasing trend in employment may be observed in future as well. The fitted quadratic model with $R^2 = 95\%$ is also predicting slight decline in LSM Employment in coming month.

6. Data Tables

Table 2: Production of Selected Items Pertaining to Large-Scale Manufacturing Sector, May-2020 Vs April-2020

Sr. No.	Industrial Sector/ Items	No. of Industrial Units as per CMI 2005-06	WEIGHT (2005-06)	Unit of Quantity	Production		Index of Production in May:2020 with April: 2020
					May:2020	April:2020	
1.	<u>VEGETABLE GHEE</u>	35	1.61				
i.	VEGETABLE GHEE		1.11	M.Tons	33,856	36,009	94.0
ii.	COOKING OIL		0.50	M.Tons	16,382	16,761	97.7
2.	<u>SUGAR</u>	26	4.32				
i.	SUGAR		4.32	M.Tons	-	5,287	0.0
3.	<u>TEA</u>	7	1.23				
i.	TEA		1.23	M.Tons	3,732	3,881	96.2
4.	<u>BEVERAGES</u>	13	0.85				
i.	BEVERAGES		0.85	"000" NOs.	120,284	106,473	113.0
ii.	WATER*		0.85	"000" NOs.	14,429	15,680	92.0
5.	<u>COTTON TEXTILE</u>	133	13.65				
i.	COTTON YARN		9.10	M.Tons	15,851	14,367	110.3
ii.	COTTON FABRICS		4.13	"000" Sq. M	10,526	10,207	103.1
iii.	M.M.YARN		0.42	M.Tons	473	338	139.9
6.	<u>LEATHER TANNING</u>	30	0.29				
i.	UPPER LEATHER		0.07	"000" Sq. M.	253	-	
ii.	WET BLUE TANNED		0.22	"000" Sq. M.	45	-	
7.	<u>COTTON GINNING & PRESSING</u>	85	3.30				
i.	C.G.& PRESSING		3.30	Bales	-	-	
8.	<u>PAPER & PAPER BOARD</u>	6	0.01				
i.	PRINTING PAPER		0.01	M.Tons	332	377	88.1
ii.	WRITTEN PAPER		0.01	M.Tons	-	103	0.0
iii.	PACKING & OTHER PAPER		0.01	M.Tons	1,221	1,233	99.0
iv.	ADVERTISING MATERIAL*		0.01	M.Tons	19	21	90.5
9.	<u>PHARMACEUTICALS</u>	78	6.37				
i.	TABLETS		1.67	"000" NOs.	2,107,614	2,120,223	99.4
ii.	LIQUIDS/SYRUPS		1.97	"000" Liters.	7,368	7,515	98.0
iii.	CAPSULES		1.36	"000" NOs.	299,154	329,814	90.7
iv.	INJECTIONS		1.22	"000" NOs.	105,689	115,236	91.7
v.	OINTMENT		0.15	KGs.	235,641	238,811	98.7
10.	<u>ACID, ALKALIES & SALT</u>	3	0.04				
i.	SULPHURIC ACID		0.04	M.Tons	2,421	1,124	215.4
11.	<u>FERTILIZER</u>	3	3.50				
i.	UREA		3.50	M.Tons	252,160	238,958	105.5
ii.	AMONIA		3.50	M.Tons	49,352	45,592	108.2
iii.	DAP*		3.50	M.Tons	74,591	41,356	180.4
12.	<u>PAINTS & VARNISH</u>	9	0.32				
i.	PAINTS		0.32	M.Tons	38	-	
ii.	VARNISH		0.32	"000" Liters.	104	-	

Sr. No.	Industrial Sector/ Items	No. of Industrial Units as per CMI 2005-06	WEIGHT (2005-06)	Unit of Quantity	Production		Index of Production in May:2020 with April: 2020
					May:2020	April:2020	
13.	<u>SOAP</u>	38	1.66				
i.	WASHING SOAP		1.66	M.Tons	5,252	6,485	81.0
ii.	DETERGENT POWDER		1.66	M.Tons	13,971	14,464	96.6
iii.	TOILET SOAP		1.66	M.Tons	1,940	1,978	98.1
iv.	TOOTH PASTE*		1.66	M.Tons	721	940	76.7
14.	<u>PETROLEUM PRODUCTS</u>	2	9.32				
i.	L.P.G		9.32	"000" Liters.	2,351	2,286	102.8
ii.	NAPHTHA SOLVENT		9.32	"000" Liters.	1,599	888	180.1
iii.	KEROSENE OIL		9.32	"000" Liters.	-	-	
iv.	H.S.D		9.32	"000" Liters.	94,295	90,971	103.7
v.	FURNACE OIL		9.32	"000" Liters.	20,278	24,637	82.3
vi.	ASPHALT 80-100		9.32	"000" Liters.	-	-	
vii.	ASPHALT 60-70		9.32	"000" Liters.	6,612	6,612	100.0
viii.	MOTOR SPRIT		9.32	"000" Liters.	26,577	21,275	124.9
ix.	JET FUEL		9.32	"000" Liters.	3,350	4,378	76.5
x.	LUBRICATING OIL		9.32	"000" Liters.	10,024	10,024	100.0
					16,49		
xi.	OTHERS*		0.00	"000" Liters.	0	16,490	100.0
15.	<u>TYRES & TUBES</u>	4	0.41				
i.	MOTOR TYRE		0.41	Nos.	32,000	-	
ii.	MOTOR TUBE		0.41	Nos.	7,620	-	
16.	<u>CEMENT</u>	11	3.86				
i.	CEMENT		3.86	M.Tons	69,151	196,440	35.2
17.	<u>M.S.PRODUCTS</u>	28	4.88				
i.	M.S PRODUCTS		4.88	M.Tons	2,685	3,987	67.3
18.	<u>SAFETY RAZOR BLADE</u>	1	0.40				
i.	SAFETY RAZOR BLAD		0.04	"000" NOs.	3,060	-	
19.	<u>SEWING MACHINES</u>	3	0.25				
i.	SEWING MACHINES		0.25	Nos.	-	-	
20.	<u>ELEC. APPLIANCES</u>	3	2.21				
i.	REFRIGERATORS		0.11	Nos.	540	-	
ii.	AIR-CONDITIONERS		0.60	Nos.	630	-	
iii.	DEEP FREEZERS		0.50	Nos.	-	-	
iv.	WASHING MACHINES		0.50	Nos.	320	-	
v.	MICROWAVE OVEN*		0.50	Nos.	502	-	
21.	<u>AUTOMOBILE</u>	17	11.15				
i.	TRUCKS		2.71	Nos.	-	-	
ii.	BUSES		0.77	Nos.	-	-	
iii.	LCV'S		2.50	Nos.	57	-	
iv.	MOTOR CYCLES		2.06	Nos.	32,316	-	
v.	TRACTORS		0.25	Nos.	7,035	1,742	403.8
vi.	CARS		0.50	Nos.	656	-	
vii.	VANS & JEEPS*		1.18	Nos.	13	-	
viii.	THREE WHEELERS*		1.18	Nos.	2,087	-	
	Grand Total	535	69.63				

*New items are reporting from selected companies added since July (2019-20)

Table 3: Production of Selected Items Pertaining to Large-Scale Manufacturing Sector, May-2020 Vs May-2019

Sr. No.	Industrial Sector/ Items	No. of Industrial Units as per CMI 2005-06	WEIGHT (2005-06)	Unit of Quantity	Production		Index of Production in May:2020 with May:2019
					May:2020	May:2019	
1.	<u>VEGETABLE GHEE</u>	35	1.61				
i.	VEGETABLE GHEE		1.11	M.Tons	33,856	34,664	97.7
ii.	COOKING OIL		0.50	M.Tons	16,382	15,819	103.6
2.	<u>SUGAR</u>	26	4.32				
i.	SUGAR		4.32	M.Tons	-	-	
3.	<u>TEA</u>	7	1.23				
i.	TEA		1.23	M.Tons	3,732	3,931	94.9
4.	<u>BEVERAGES</u>	13	0.85				
i.	BEVERAGES		0.85	"000" NOs.	120,284	71,359	168.6
ii.	WATER*		0.85	"000" NOs.	14,429		
5.	<u>COTTON TEXTILE</u>	133	13.65				
i.	COTTON YARN		9.10	M.Tons	15,851	19,208	82.5
ii.	COTTON FABRICS		4.13	"000" Sq. M	10,526	12,362	85.1
iii.	M.M.YARN		0.42	M.Tons	473	1,634	29.0
6.	<u>LEATHER TANNING</u>	30	0.29				
i.	UPPER LEATHER		0.07	"000" Sq. M.	253	864	29.3
ii.	WET BLUE TANNED		0.22	"000" Sq. M.	45	113	39.8
7.	<u>COTTON GINNING & PRESSING</u>	85	3.30				
i.	C.G.& PRESSING		3.30	Bales	-	-	
8.	<u>PAPER & PAPER BOARD</u>	6	0.01				
i.	PRINTING PAPER		0.01	M.Tons	332	378	87.8
ii.	WRITTEN PAPER		0.01	M.Tons	-	318	0.0
iii.	PACKING & OTHER PAPER		0.01	M.Tons	1,221	1,076	113.5
iv.	ADVERTISING MATERIAL*		0.01	M.Tons	19		
9.	<u>PHARMACEUTICALS</u>	78	6.37				
i.	TABLETS		1.67	"000" NOs.	2,107,614	2,062,948	102.2
ii.	LIQUIDS/SYRUPS		1.97	"000" Liters.	7,368	6,697	110.0
iii.	CAPSULES		1.36	"000" NOs.	299,154	245,926	121.6
iv.	INJECTIONS		1.22	"000" NOs.	105,689	106,542	99.2
v.	OINTMENT		0.15	KGs.	235,641	211,675	111.3
10.	<u>ACID, ALKALIES & SALT</u>	3	0.04				
i.	SULPHURIC ACID		0.04	M.Tons	2,421	2,785	86.9
11.	<u>FERTILIZER</u>	3	3.50				
i.	UREA		3.50	M.Tons	252,160	195,790	128.8
ii.	AMONIA		3.50	M.Tons	49,352	50,027	98.7
iii.	DAP*		3.50	M.Tons	74,591		
12.	<u>PAINTS & VARNISH</u>	9	0.32				
i.	PAINTS		0.32	M.Tons	38	121	31.4
ii.	VARNISH		0.32	"000" Liters.	104	406	25.6

Sr. No.	Industrial Sector/ Items	No. of Industrial Units as per CMI 2005-06	WEIGHT (2005-06)	Unit of Quantity	Production		Index of Production in May:2020 with May:2019
					May:2020	May:2019	
13.	<u>SOAP</u>	38	1.66				
i.	WASHING SOAP		1.66	M.Tons	5,252	4,374	120.1
ii.	DETERGENT POWDER		1.66	M.Tons	13,971	14,955	93.4
iii.	TOILET SOAP		1.66	M.Tons	1,940	1,912	101.5
iv.	TOOTH PASTE*		1.66	M.Tons	721		
14.	<u>PETROLEUM PRODUCTS</u>	2	9.32				
i.	L.P.G		9.32	"000" Liters.	2,351	3,044	77.2
ii.	NAPHTHA SOLVENT		9.32	"000" Liters.	1,599	30,780	5.2
iii.	KEROSENE OIL		9.32	"000" Liters.	-	378	0.0
iv.	H.S.D		9.32	"000" Liters.	94,295	143,301	65.8
v.	FURNACE OIL		9.32	"000" Liters.	20,278	76,618	26.5
vi.	ASPHALT 80-100		9.32	"000" Liters.	-	6,078	0.0
vii.	ASPHALT 60-70		9.32	"000" Liters.	6,612	-	
viii.	MOTOR SPRIT		9.32	"000" Liters.	26,577	22,376	118.8
ix.	JET FUEL		9.32	"000" Liters.	3,350	6,900	48.6
x.	LUBRICATING OIL		9.32	"000" Liters.	10,024	-	
xi.	OTHERS*		0.00	"000" Liters.	16,490	-	
15.	<u>TYRES & TUBES</u>	4	0.41				
i.	MOTOR TYRE		0.41	Nos.	32,000	220,244	14.5
ii.	MOTOR TUBE		0.41	Nos.	7,620	83,418	9.1
16.	<u>CEMENT</u>	11	3.86				
i.	CEMENT		3.86	M.Tons	69,151	121,689	56.8
17.	<u>M.S.PRODUCTS</u>	28	4.88				
i.	M.S PRODUCTS		4.88	M.Tons	2,685	2,820	95.2
18.	<u>SAFETY RAZOR BLADE</u>	1	0.40				
i.	SAFETY RAZOR BLAD		0.04	"000" NOs.	3,060	69,873	4.4
19.	<u>SEWING MACHINES</u>	3	0.25				
i.	SEWING MACHINES		0.25	Nos.	-	2,775	0.0
20.	<u>ELEC. APPLIANCES</u>	3	2.21				
i.	REFRIGERATORS		0.11	Nos.	540	54,969	1.0
ii.	AIR-CONDITIONERS		0.60	Nos.	630	12,253	5.1
iii.	DEEP FREEZERS		0.50	Nos.	-	1,277	0.0
iv.	WASHING MACHINES		0.50	Nos.	320	16,463	1.9
v.	MICROWAVE OVEN*		0.50	Nos.	502		
21.	<u>AUTOMOBILE</u>	17	11.15				
i.	TRUCKS		2.71	Nos.	-	355	0.0
ii.	BUSES		0.77	Nos.	-	94	0.0
iii.	LCV'S		2.50	Nos.	57	1,323	4.3
iv.	MOTOR CYCLES		2.06	Nos.	32,316	149,155	21.7
v.	TRACTORS		0.25	Nos.	7,035	3,214	218.9
vi.	CARS		0.50	Nos.	656	11,885	5.5
vii.	VANS & JEEPS*		1.18	Nos.	13		
viii.	THREE WHEELERS*		1.18	Nos.	2,087		
Grand Total		535	69.63				

*New items are reporting from selected companies added since July (2019-20)

**Table 4: Cumulative Production of Selected Items Pertaining to Large-Scale Manufacturing Sector,
2019-20 (Jul to May) Vs 2018-19 (Jul to May)**

Sr. No.	Industrial Sector/ Items	No. of Industrial Units as per CMI 2005-06	WEIGHT (2005-06)	Unit of Quantity	Production		Index of Production in 2019-20 (Jul-May) with 2018-19 (Jul-May)
					2019-20 (Jul-May)	2018-19 (Jul-May)	
1.	<u>VEGETABLE GHEE</u>	35	1.61				
i.	VEGETABLE GHEE		1.11	M.Tons	376,223	378,217	99.5
ii.	COOKING OIL		0.50	M.Tons	174,221	172,838	100.8
2.	<u>SUGAR</u>	26	4.32				
i.	SUGAR		4.32	M.Tons	1,415,303	1,809,582	78.2
3.	<u>TEA</u>	7	1.23				
i.	TEA		1.23	M.Tons	48,443	72,069	67.2
4.	<u>BEVERAGES</u>	13	0.85				
i.	BEVERAGES		0.85	"000" NOs.	1,000,416	1,064,006	94.0
ii.	WATER*		0.85	"000" NOs.	169,258		
5.	<u>COTTON TEXTILE</u>	133	13.65				
i.	COTTON YARN		9.10	M.Tons	192,381	239,391	80.4
ii.	COTTON FABRICS		4.13	"000" Sq. M	117,717	138,891	84.8
iii.	M.M.YARN		0.42	M.Tons	8,732	23,016	37.9
6.	<u>LEATHER TANNING</u>	30	0.29				
i.	UPPER LEATHER		0.07	"000" Sq. M.	10,393	13,457	77.2
ii.	WET BLUE TANNED		0.22	"000" Sq. M.	973	1,167	83.4
7.	<u>COTTON GINNING & PRESSING</u>	85	3.30				
i.	C.G.& PRESSING		3.30	Bales	3,472,114	4,148,976	83.7
8.	<u>PAPER & PAPER BOARD</u>	6	0.01				
i.	PRINTING PAPER		0.01	M.Tons	4,089	3,394	120.5
ii.	WRITTEN PAPER		0.01	M.Tons	2,767	3,349	82.6
iii.	PACKING & OTHER PAPER		0.01	M.Tons	16,629	18,770	88.6
iv.	ADVERTISING MATERIAL*		0.01	M.Tons	254		
9.	<u>PHARMACEUTICALS</u>	78	6.37				
i.	TABLETS		1.67	"000" NOs.	22,728,766	23,285,088	97.6
ii.	LIQUIDS/SYRUPS		1.97	"000" Liters.	73,082	82,313	88.8
iii.	CAPSULES		1.36	"000" NOs.	3,086,055	2,930,333	105.3
iv.	INJECTIONS		1.22	"000" NOs.	1,052,892	1,074,971	97.9
v.	OINTMENT		0.15	KGs.	2,482,970	2,513,433	98.8
10.	<u>ACID, ALKALIES & SALT</u>	3	0.04				
i.	SULPHURIC ACID		0.04	M.Tons	25,024	28,115	89.0
11.	<u>FERTILIZER</u>	3	3.50				
i.	UREA		3.50	M.Tons	2,533,231	2,239,280	113.1
ii.	AMONIA		3.50	M.Tons	591,466	414,696	142.6
iii.	DAP*		3.50	M.Tons	664,967		
12.	<u>PAINTS & VARNISH</u>	9	0.32				
i.	PAINTS		0.32	M.Tons	1,056	1,264	83.5
ii.	VARNISH		0.32	"000" Liters.	3,859	5,306	72.7

Sr. No.	Industrial Sector/ Items	No. of Industrial Units as per CMI 2005-06	WEIGHT (2005-06)	Unit of Quantity	Production		Index of Production in 2019-20 (Jul-May) with 2018-19 (Jul-May)
					2019-20 (Jul-May)	2018-19 (Jul-May)	
13.	<u>SOAP</u>	38	1.66				
i.	WASHING SOAP		1.66	M.Tons	55,063	48,784	112.9
ii.	DETERGENT POWDER		1.66	M.Tons	156,341	157,451	99.3
iii.	TOILET SOAP		1.66	M.Tons	20,963	21,968	95.4
iv.	TOOTH PASTE*		1.66	M.Tons	8,478		
14.	<u>PETROLEUM PRODUCTS</u>	2	9.32				
i.	L.P.G		9.32	"000" Liters.	22,751	29,523	77.1
ii.	NAPHTHA SOLVENT		9.32	"000" Liters.	206,813	294,830	70.1
iii.	KEROSENE OIL		9.32	"000" Liters.	8,426	8,001	105.3
iv.	H.S.D		9.32	"000" Liters.	1,133,495	1,363,350	83.1
v.	FURNACE OIL		9.32	"000" Liters.	572,803	797,187	71.9
vi.	ASPHALT 80-100		9.32	"000" Liters.	114,861	80,729	142.3
vii.	ASPHALT 60-70		9.32	"000" Liters.	42,487	25,353	167.6
viii.	MOTOR SPRIT		9.32	"000" Liters.	173,618	271,000	64.1
ix.	JET FUEL		9.32	"000" Liters.	119,429	141,465	84.4
x.	LUBRICATING OIL		9.32	"000" Liters.	61,750	49,842	123.9
xi.	OTHERS*		0.00	"000" Liters.	344,362	1,186	
15.	<u>TYRES & TUBES</u>	4	0.41				
i.	MOTOR TYRE		0.41	Nos.	1,903,235	2,461,810	77.3
ii.	MOTOR TUBE		0.41	Nos.	455,746	663,928	68.6
16.	<u>CEMENT</u>	11	3.86				
i.	CEMENT		3.86	M.Tons	1,447,470	1,264,220	114.5
17.	<u>M.S.PRODUCTS</u>	28	4.88				
i.	M.S PRODUCTS		4.88	M.Tons	46,297	40,888	113.2
18.	<u>SAFETY RAZOR BLADE</u>	1	0.40				
i.	SAFETY RAZOR BLAD		0.04	"000" NOs.	566,615	765,756	74.0
19.	<u>SEWING MACHINES</u>	3	0.25				
i.	SEWING MACHINES		0.25	Nos.	24,827	30,566	81.2
20.	<u>ELEC. APPLIANCES</u>	3	2.21				
i.	REFRIGERATORS		0.11	Nos.	395,288	514,724	76.8
ii.	AIR-CONDITIONERS		0.60	Nos.	49,489	145,789	33.9
iii.	DEEP FREEZERS		0.50	Nos.	7,875	14,833	53.1
iv.	WASHING MACHINES		0.50	Nos.	194,904	173,998	112.0
v.	MICROWAVE OVEN*		0.50	Nos.	263,411		
21.	<u>AUTOMOBILE</u>	17	11.15				
i.	TRUCKS		2.71	Nos.	2,781	5,773	48.2
ii.	BUSES		0.77	Nos.	422	829	50.9
iii.	LCV'S		2.50	Nos.	11,897	22,372	53.2
iv.	MOTOR CYCLES		2.06	Nos.	1,156,676	1,595,243	72.5
v.	TRACTORS		0.25	Nos.	33,214	46,349	71.7
vi.	CARS		0.50	Nos.	97,001	195,415	49.6
vii.	VANS & JEEPS*		1.18	Nos.	3,460		
viii.	THREE WHEELERS*		1.18	Nos.	33,454		
	Grand Total	535	69.63				

*New items are reporting from selected companies added since July (2019-20)

Table 5: Employment in Selected Large-Scale Manufacturing Sector, May-2020 Vs April-2020

Sr. No.	Industrial Sector/ Items	No. of Industrial Units as per CMI 2005-06	Total Employees		Production Worker	
			May:2020	April:2020	May:2020	April:2020
1	<u>VEGETABLE GHEE</u>	35	2,258	2,258	1,574	1,574
2	<u>SUGAR</u>	26	5,525	10,511	5,288	5,779
3	<u>TEA</u>	7	3,033	3,094	2,574	2,632
4	<u>BEVERAGES</u>	13	3,598	3,598	1,537	1,537
5	<u>COTTON TEXTILE</u>	133	53,414	53,388	41,205	41,195
6	<u>LEATHER TANNING</u>	30	6,344	6,344	5,605	5,605
7	<u>PAPER & PAPER BOARD</u>	6	2,162	2,238	1,526	1,594
8	<u>PHARMACEUTICALS</u>	78	6,274	6,269	3,662	3,660
9	<u>ACID, ALKALIES & SALT</u>	3	18	34	13	22
10	<u>FERTILIZER</u>	3	984	986	816	821
11	<u>PAINTS & VARNISH</u>	9	103	103	54	54
12	<u>SOAP</u>	38	2,072	2,071	1,724	1,724
13	<u>PETROLEUM PRODUCTS</u>	2	438	435	339	338
14	<u>TYRES & TUBES</u>	4	716	-	506	-
15	<u>CEMENT</u>	11	4,362	4,378	1,863	1,868
16	<u>STEEL PRODUCTS</u>	1	-	-	-	-
17	<u>M.S PRODUCTS</u>	28	818	827	670	670
18	<u>SAFETY RAZOR BLAD</u>	1	288	288	251	251
19	<u>SEWING MACHINES</u>	3	-	-	-	-
20	<u>ELEC. APPLIANCES</u>	3	375	-	330	-
21	<u>AUTOMOBILE</u>	17	14,877	14,877	6,865	6,825
22	<u>STORAGE BATTERIES</u>	4	1,808	1,809	1,595	1,600
	Grand Total	455	109,467	113,507	77,995	77,748

Table 6: Employment in Selected Large-Scale Manufacturing Sector, May-2020 Vs May-2019

Sr. No.	Industrial Sector/ Items	No. of Industrial Units as per CMI 2005-06	Employees		Production Worker	
			May:2020	May:2019	May:2020	May:2019
1	<u>VEGETABLE GHEE</u>	35	2,258	2,238	1,574	1,635
2	<u>SUGAR</u>	26	5,525	8,936	5,288	5,611
3	<u>TEA</u>	7	3,033	140	2,574	96
4	<u>BEVERAGES</u>	13	3,598	3,338	1,537	1,712
5	<u>COTTON TEXTILE</u>	133	53,414	60,153	41,205	45,543
6	<u>LEATHER TANNING</u>	30	6,344	5,588	5,605	4,722
7	<u>PAPER & PAPER BOARD</u>	6	2,162	507	1,526	433
8	<u>PHARMACEUTICALS</u>	78	6,274	9,732	3,662	6,440
9	<u>ACID, ALKALIES & SALT</u>	3	18	34	13	22
10	<u>FERTILIZER</u>	3	984	331	816	242
11	<u>PAINTS & VARNISH</u>	9	103	106	54	57
12	<u>SOAP</u>	38	2,072	3,126	1,724	2,754
13	<u>PETROLEUM PRODUCTS</u>	2	438	415	339	342
14	<u>TYRES & TUBES</u>	4	716	6,036	506	4,236
15	<u>CEMENT</u>	11	4,362	5,124	1,863	2,148
16	<u>STEEL PRODUCTS</u>	1	-	9,755	-	6,687
17	<u>M.S PRODUCTS</u>	28	818	827	670	670
18	<u>SAFETY RAZOR BLAD</u>	1	288	288	251	257
19	<u>SEWING MACHINES</u>	3	-	151	-	110
20	<u>ELECTRICAL APPARATUS</u>	3	375	750	330	663
21	<u>AUTOMOBILE</u>	17	14,877	3,301	6,865	2,601
22	<u>STORAGE BATTERIES</u>	4	1,808		1,595	
	Grand Total	455	109,467	120,876	77,995	86,979

**Table 7: Average Monthly Employment in Selected Large Scale Manufacturing Sector,
2019-20 (Jul to May) Vs 2018-19 (Jul to May)**

Sr. No.	Industrial Sector/ Items	No. of Industrial Units as per CMI 2005-06	Average Monthly Total Employment		Average Monthly Production Worker	
			(Jul-May) 2019-20	(Jul-May) 2018-19	(Jul-May) 2019-20	(Jul-May) 2018-19
1	<u>VEGETABLE GHEE</u>	35	2,239	2,366	1,604	1,768
2	<u>SUGAR</u>	26	8,256	9,129	5,512	5,833
3	<u>TEA</u>	7	3,106	142	2,219	98
4	<u>BEVERAGES</u>	13	3,119	3,919	1,195	1,901
5	<u>COTTON TEXTILE</u>	133	54,187	57,542	42,061	43,921
6	<u>LEATHER TANNING</u>	30	6,513	5,742	5,566	4,864
7	<u>PAPER & PAPER BOARD</u>	6	2,244	533	1,617	462
8	<u>PHARMACEUTICALS</u>	78	6,223	9,632	3,489	6,202
9	<u>ACID, ALKALIES & SALT</u>	3	33	34	21	22
10	<u>FERTILIZER</u>	3	969	340	804	250
11	<u>PAINTS & VARNISH</u>	9	105	106	56	54
12	<u>SOAP</u>	38	2,446	3,315	2,120	2,945
13	<u>PETROLEUM PRODUCTS</u>	2	434	418	339	345
14	<u>TYRES & TUBES</u>	4	4,838	6,105	3,412	4,261
15	<u>CEMENT</u>	11	4,534	5,161	1,926	2,256
16	<u>STEEL PRODUCTS</u>	1	7,618	10,196	5,163	7,072
17	<u>M.S PRODUCTS</u>	28	826	919	670	753
18	<u>SAFETY RAZOR BLAD</u>	1	288	288	253	258
19	<u>SEWING MACHINES</u>	3	339	149	293	109
20	<u>ELECTRICAL APPARATUS</u>	3	648	750	572	663
21	<u>AUTOMOBILE</u>	17	14,979	3,373	6,877	2,629
22	<u>STORAGE BATTERIES</u>	4	2,068	-	1,643	-
	Grand Total	455	126,012	120,158	87,412	86,666

Annexure – A: Proforma/ Questionnaire



**GOVERNMENT OF SINDH
PLANNING & DEVELOPMENT DEPARTMENT
BUREAU OF STATISTICS**

www.sindhbos.gov.pk

Street-13, Block-8, Kehkashan Clifton, Karachi-75600, P.O.Box# 3879



021-99251259



ddindustries.sindhbos@gmail.com / m.kazimjafri@hotmail.com

The information supplied will be kept strictly confidential and will be used for statistical purpose only.	REPORT FOR	
	MONTH	YEAR

MONTHLY SURVEY OF INDUSTRIAL PRODUCTION AND EMPLOYMENT IN SINDH.

INDUSTRY CODE

--	--	--	--	--

Estb: Code

--	--	--	--

LOCATION CODE

--	--

PART-I GENERAL PARTICULARS

i) Name and Address of the Establishment _____

ii) Name, Designation, Telephone, Cell and _____

Fax# of the person to be contacted. _____

iii) Website and E-mail Address _____

PART-II PRODUCTION DATA

S.No	Major Items of Production	Code	Unit of Quantity	Code	Previous Month	Current Month	Reasons of Growth/ Decline

PART-III WORKING DAYS AND EMPLOYMENT

i) No. of days establishment worked _____

ii) No. of Production workers. Male _____ Female _____ Total _____

iii) No. of Non production workers Male _____ Female _____ Total _____

TOTAL (ii + iii)

Male _____ Female _____ Total _____

Note: Production Workers mean those who are directly associated with production. It includes those engaged in manufacturing, assembling packing repairing etc. Working Supervisor should also be included, Non production worker mean those who are not directly associated with production it includes Administrative Clerical and Services Staff like Chowkidar, Driver and Sweeper.

Signature _____

Designation _____

Date _____

Annexure – B: Important Definitions

Large Scale Manufacturing Industries

Establishments where 10 or more employees are working are called large Scale Manufacturing Industries.

Employees

Employees mean all persons whether part time or full time who work in the establishments and receive remuneration in cash or in kind. Working proprietors, unpaid family workers and home workers are excluded from the category of employee. There are two types of employees Production Workers and Non-Production Workers.

- **Production Workers**

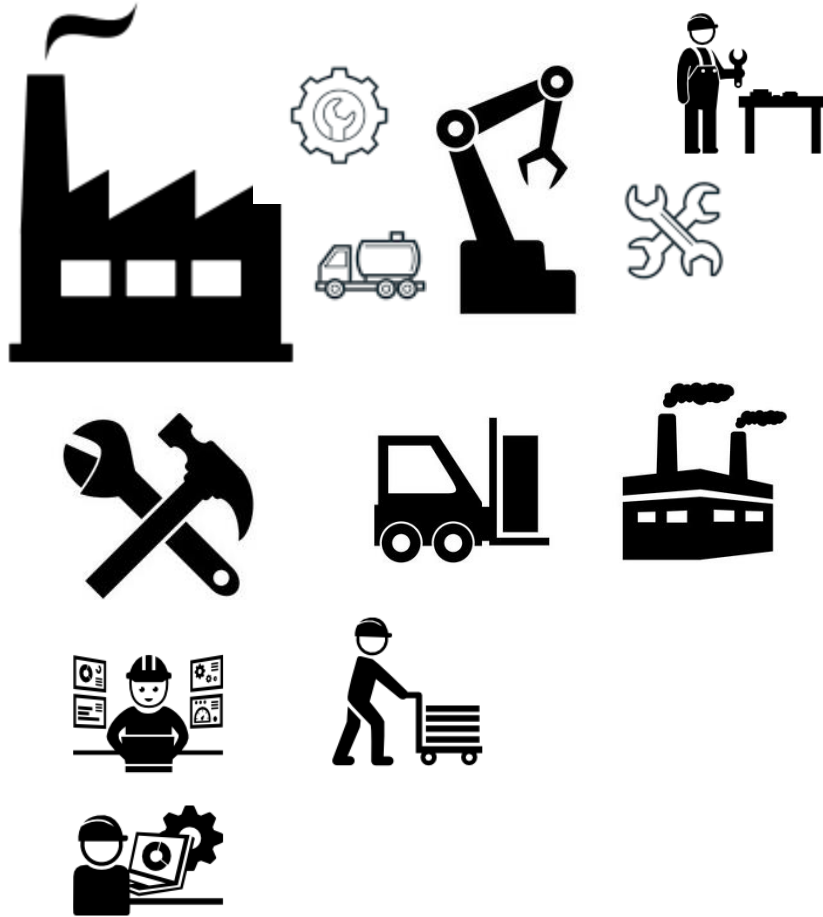
Are engaged in work directly associated with production like manufacturing, assembling, packing, repairing etc. Working supervisors and persons engaged for repairs and maintenance are also included.

- **Non-Production Workers**

Include administrative and professional employees, white-collar office employees, drivers, watchmen/guards, peons, sweepers, office boys, etc.

Annexure – C: Data Users

- Ministry of Industries & Production, Government of Pakistan.
- Planning & Development Department, Government of Sindh.
- Pakistan Bureau of Statistics, Government of Pakistan.
- State Bank of Pakistan.
- Provincial Bureaus of Statistics, Punjab, KPK and Baluchistan.
- Research & Training Wing, Planning & Development Department, Government of Sindh.



(Industries Section)
Bureau of Statistics
Planning & Development
Department
Government of Sindh
m.kazimjafri@hotmail.com

ST:13 Block-8 Kehkashan Clifton, Ch. Kahliqz-zaman road, Karachi
Ph. 021-99251259, Email: ddindustries.sindhbos@gmail.com
www.sindhbos.gov.pk