

MONTHLY SURVEY OF INDUSTRIAL PRODUCTION & EMPLOYMENT IN SINDH

November, 2020

Industries Section. BOS



BUREAU OF STATISTICS
PLANNING & DEVELOPMENT DEPARTMENT
GOVERNMENT OF SINDH

FOR OFFICIAL USE ONLY

Sindh Monthly Survey of Industrial Production & Employment (MIPE)

November, 2020



Bureau of Statistics
Planning & Development Department
Government of Sindh
www.sindhbos.gov.pk
ddindustries.sindhbos.gov.pk

Preface

Monthly Survey of Industrial Production and Employment (MIPE) is being conducted/published by Sindh Bureau of Statistics on regular basis since 1970s. This report provides important statistics in respect of industrial production & employment of large Scale Manufacturing (LSM) industries in Sindh.

This report contains information on 61 items manufactured in 22 selected large scale industrial sectors covering 537 industrial establishments (selection on the basis of CMI 2005-06). These industries account for 69.6% of total value added of large scale manufacturing sector in Sindh.

MIPE Report provides information regarding General Index and Quantum Index of Manufacturing (QIM) to base period 2005-06, and analytical analysis on the current status of production and employment in manufacturing sector.

All the efforts are made to improve the industrial statistics and hope this report would prove useful to policy makers, planners, researchers and other data users. Suggestion/recommendations from the users will always be welcomed and appreciated.

Shahzad Fazal Abbasi
Director General
Bureau of Statistics
Planning & Development Department
Government of Sindh

Contents

PREFACE	II
CONTENTS	III
<i>LIST OF TABLES</i>	IV
<i>LIST OF FIGURES</i>	IV
<i>LIST OF EQUATIONS</i>	IV
MIPE TEAM (INDUSTRIES SECTION).....	V
INTRODUCTION	1
1. QUESTIONNAIRE/ PROFORMA	2
2. METHODOLOGY	2
3. EDITING	2
4. QUANTUM INDEX OF MANUFACTURING (QIM)	3
REPORT ANALYSIS	4
ANNEXURE – A PROFORMA/ QUESTIONNAIRE	15
ANNEXURE – B IMPORTANT DEFINITIONS	16
ANNEXURE – C DATA USERS	17

List of Tables

TABLE 1: SERIES OF QUANTUM INDEX OF MANUFACTURING (QIM) AT (2005-06=100) _____	4
TABLE 2: PRODUCTION OF SELECTED ITEMS PERTAINING TO LARGE-SCALE MANUFACTURING SECTOR, NOVEMBER-2020 Vs OCTOBER-2020 _____	6
TABLE 3: PRODUCTION OF SELECTED ITEMS PERTAINING TO LARGE-SCALE MANUFACTURING SECTOR, NOVEMBER-2020 Vs NOVEMBER-2019 _____	8
TABLE 4: PRODUCTION OF SELECTED ITEMS PERTAINING TO LARGE-SCALE MANUFACTURING SECTOR, _____	10
TABLE 5: EMPLOYMENT IN SELECTED LARGE-SCALE MANUFACTURING SECTOR, NOVEMBER-2020 Vs OCTOBER-2020 _____	12
TABLE 6: EMPLOYMENT IN SELECTED LARGE-SCALE MANUFACTURING SECTOR, NOVEMBER-2020 Vs NOVEMBER-2019 _____	13
TABLE 7: AVERAGE MONTHLY EMPLOYMENT IN SELECTED LARGE SCALE MANUFACTURING SECTOR, _____	14

List of Figures

FIGURE 1: TREND OF QUANTUM INDEX OF LARGE SCALE MANUFACTURING INDUSTRIES AT BASE YEAR 2005-06 _____	5
FIGURE 2: TREND OF AVERAGE MONTHLY EMPLOYMENT IN LARGE SCALE MANUFACTURING INDUSTRIES _____	5

List of Equations

EQUATION 1 LASPAYER'S INDEX _____	3
-----------------------------------	---

MIPE Team (Industries Section)

Team Lead:

Muhammad Kazim Jafri

Deputy Director

Team Members:

1. Ms. Rukhsana Aziz

Statistical Officer

2. Ms. Faaeza Atiq

Statistical Officer

Support in Data Collection and Compilation:

1. Mr. Muhammad Younus Bukhari

Jr. Stenographer

2. Mr. Muhammad Akram Bhatti

Statistical Computer

Introduction

Industrial Statistics is very essential tool to track industrial growth and implementation of policies in right directions. This sector has great importance for economic development of country. As per the composition of Pakistan's economy in 2019-20, Agriculture Sector is 19.31%, Industries Sector is 19.29% and Services Sector is 61.4%.

According to the Pakistan Bureau of Statistics, for fiscal year 2020 followed partial lockdown situation faced by industrial sector in the country due to COVID-19. A significant impact has been observed in the manufacturing sector, particularly Large-Scale Manufacturing and Small-Scale Manufacturing. In the industrial sector, 2.64% negative provincial growth has been observed (PBS). From the share of industrial sector 12.48% are manufacturing and more specifically 9.5% is Large Scale Manufacturing (LSM) Sector. The role of Sindh province in the Large Scale Manufacturing is very vital. However, Sindh QIM's trend of overall manufacturing index is on declining side which mainly caused by COVID-19. As the Karachi is the largest metropolitan city of Pakistan, according to Karachi Chamber of Commerce and Industry (KCCI) it produces 15% with an annual Gross Domestic Product (GDP). Sindh Business Register (SBR), 2017 established by Sindh Bureau of Statistics, Planning & Development Department shows that 67% establishments/ factories are located in Karachi Division and remaining 33% are located in other districts of Sindh.

For the timely and quality industrial statistics, Sindh Bureau of Statistics, Planning & Development Department has been conducting Monthly Survey of Industrial Production and Employment (MIPE). This survey report includes 61 items manufactured in 22 large scale Industrial sectors from 537 establishments/ factories in Sindh. The sample of 537 firms was drawn from the last Census of Manufacturing Industries (CMI), 2005-06 and these industries account for 70.6% of total value added in terms of production during 2005-06, CMI. However, the recent CMI 2015-16 has been conducted by PBS, as it will be published that will be used as base year and QIM base year will be shifted from 2005-06 to 2015-16. In addition to collection, compilation, tabulation and processing of manufacturing data, Bureau of Statistics also computes monthly Quantum Index of Manufacturing by using the weights of production. The quantum index is an essential indicator to gauge to aggregate monthly production of province.

1. Questionnaire/ Proforma

A questionnaire/ Proforma is a research instrument consisting of a series of questions and other prompts for the purpose of gathering information from respondents. A pre-tested questionnaire is used for the data collection of industrial inputs related to employment and production, attached at **Annex-A**.

2. Methodology

The basic method of data collection for Sindh MIPE is the posting/ mailing of MIPE Questionnaires. More than 70% monthly returns are received to this Bureau through mail from industrial units. The non-responding or remaining establishments are visited by the officers/ officials of this Bureau, besides this the method of emailing, fax and telephonic approach are also used for collection of monthly returns and increase the response rate.

3. Editing

All the received returns are scrutinized for accuracy and consistency with previous data by the Industries Section of this Bureau. As per *Unit Calculation Sheet* different units of similar products are converted into the reporting units. In case of huge discrepancy between current and previous returns the factory management is approached to rectify that figures. In the absence establishment's return or non-availability of concerned person the average production of last month or the last month information is repeated for equivalence.

4. Quantum Index of Manufacturing (QIM)

A quantum index is an index based on quantity units of goods such as number or weight. Sindh bureau of Statistics is computing Index on Industrial Production using 2005-06 as base year. Index Series is generated by using Laspayer's Index.

$$QIM = \frac{\sum_{i=1}^n \frac{q_{im}}{q_{i0}} w_i}{\sum_{i=1}^n w_i} \times 100$$

Equation 1 Laspayer's Index

q_{im} = Production of i^{th} item during the current month

q_{i0} = Average Production of the same i^{th} item in the base period (2005-06)

w_i = Weight of the i^{th} item in the base period (2005-06)

$\sum_{i=1}^n w_i$ = Total Weight of 22 large scale industrial sectors covering 535 establishments in the base period with respect to the total value added of all the industries covered in CMI in the base year 2005-06.

Report Analysis

Summary findings on the basis of Index of Industrial Production are as follows:

- Overall Production in November, 2020 is increased by 1.55% as compared to last (i.e. month October, 2020)
- Overall Production in November, 2020 is significantly increased by 15.98% as compared to corresponding month of last year (i.e. November, 2019)
- Cumulative production from July to November (2020-21) is increased by 4.5% than July to November (2019-20)
- Employment during November, 2020 is increased nearly 2% as compared to previous month (i.e. October, 2020).
- Employment during November, 2020 is also 6.72% lower than November, 2019.
- Average monthly employment during the period of July-November (2020-21) is 8.25% lower as compared to the corresponding period of July-November (2019-20).

Table 1: Series of Quantum Index of Manufacturing (QIM) at (2005-06=100)

Month/ Year	2015-16	2016-17	2017-18	2018-19	2019-20	2020-21
July	255.7	284.0	327.0	290.8	259.7	294.2
August	266.0	287.7	336.4	265.5	220.9	238.5
September	274.2	281.5	330.9	311.3	266.7	295.4
October	247.0	291.4	355.7	287.0	277.0	315.6*
November	283.7	317.1	343.2	273.3	280.3	320.5
December	261.7	302.8	341.5	265.2	223.7	
January	297.4	286.1	374.0	321.3	263.8	
February	293.2	283.3	324.5	309.0	313.2	
March	253.9	275.6	341.4	279.7	258.2	
April	250.6	276.8	338.5	258.2	172.1	
May	254.4	283.9	311.3	248.2	199.8	
June	259.0	258.1	307.4	257.6	324.9	
Average (Geometric Mean)	265.9	285.4	335.5	279.7	251.3	

**QIM October, 2020-21 revised after inclusion of steel product*

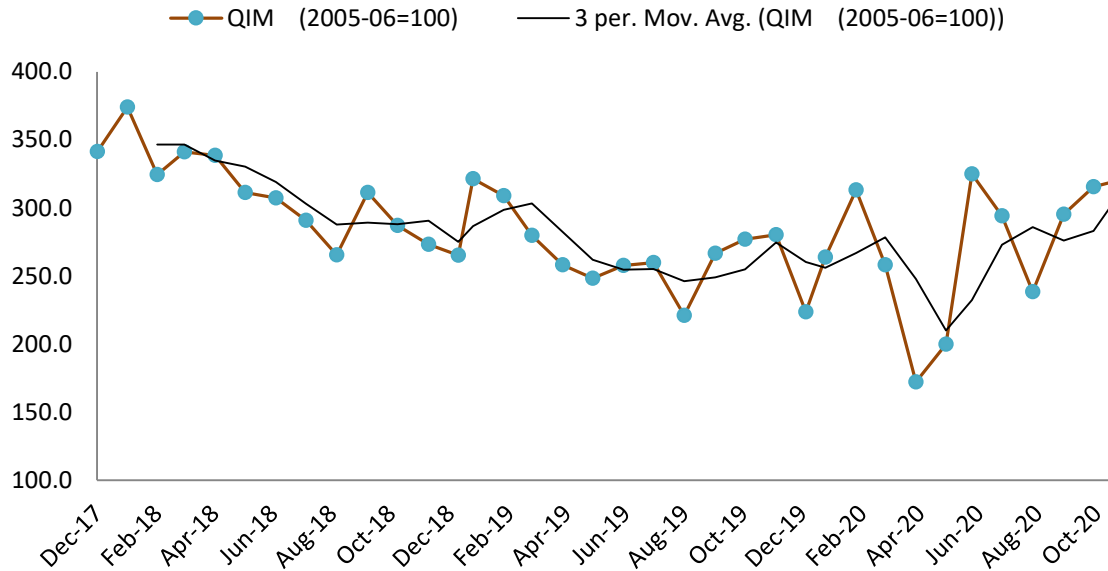


Figure 1: Trend of Quantum Index of Large Scale Manufacturing Industries at base year 2005-06

Last three months QIM figures depict a rising trend which plausible reasons are increase in production due to seasonal products which are cotton ginning and sugar and regular products such as Textile, Pharmaceutical items and Petroleum products. The production activities started in July-Aug, 2020 after first wave of COVID-19 which are being stable gradually.

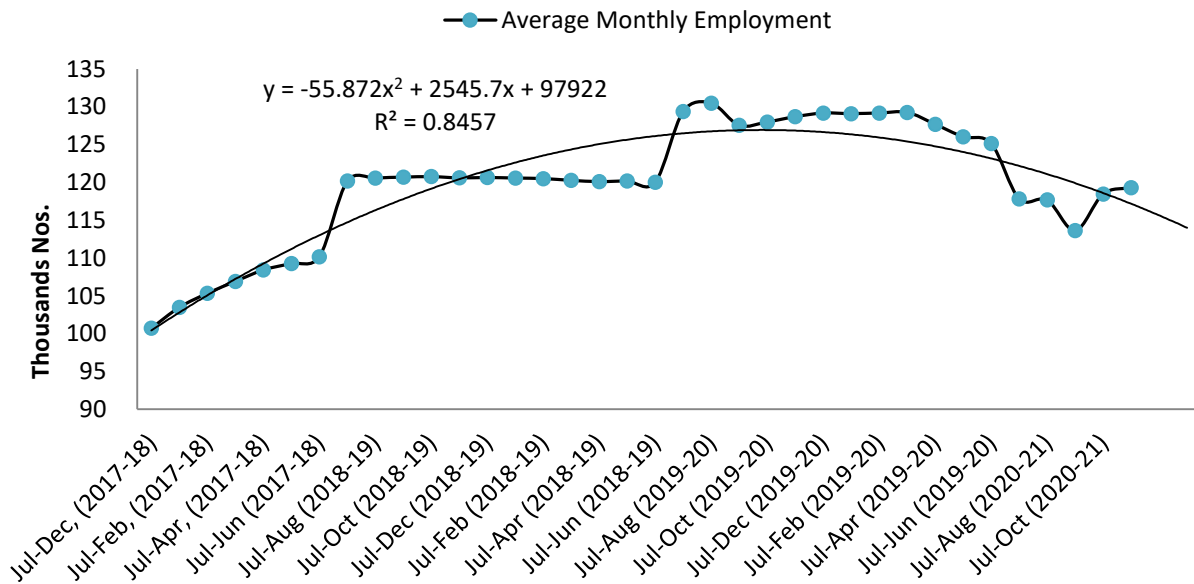


Figure 2: Trend of Average Monthly Employment in Large Scale Manufacturing Industries

Overall, minor increase observed between two last months in employment of Large Scale Manufacturing industries but affected significantly compared from previous year's employment. This is uncertainty is further expected due to pandemic. According to fitted polynomial trend model with $R^2 = 85\%$ slight decline may be reported in LSM Employment in coming months.

Table 2: Production of Selected Items Pertaining to Large-Scale Manufacturing Sector, November-2020 Vs October-2020

Sr. No.	Industrial Sector/ Items	No. of Industrial Units as per CMI 2005-06	WEIGHT (2005-06)	Unit of Quantity	Production		Index of Production in Nov:2020 with Oct: 2020
					Nov:2020	Oct:2020	
1.	<u>VEGETABLE GHEE</u>	35	1.61				
i.	VEGETABLE GHEE		1.11	M.Tons	36,974	36,592	101.0
ii.	COOKING OIL		0.50	M.Tons	16,316	15,688	104.0
2.	<u>SUGAR</u>	26	4.32				
i.	SUGAR		4.32	M.Tons	93,676	1,470	6372.5
3.	<u>TEA</u>	7	1.23				
i.	TEA		1.23	M.Tons	5,029	4,253	118.2
4.	<u>BEVERAGES</u>	13	0.85				
i.	BEVERAGES		0.85	"000" NOs.	79,767	93,964	84.9
ii.	WATER*		0.85	"000" NOs.	15,850	20,223	78.4
5.	<u>COTTON TEXTILE</u>	133	13.65				
i.	COTTON YARN		9.10	M.Tons	17,411	20,957	83.1
ii.	COTTON FABRICS		4.13	"000" Sq. M	20,464	17,074	119.9
iii.	M.M.YARN		0.42	M.Tons	1,485	1,025	144.9
6.	<u>LEATHER TANNING</u>	30	0.29				
i.	UPPER LEATHER		0.07	"000" Sq. M.	892	815	109.4
ii.	WET BLUE TANNED		0.22	"000" Sq. M.	86	88	97.7
7.	<u>COTTON GINNING & PRESSING</u>	85	3.30				
i.	C.G.& PRESSING		3.30	Bales	1,009,892	681,218	148.2
8.	<u>PAPER & PAPER BOARD</u>	6	0.01				
i.	PRINTING PAPER		0.01	M.Tons	274	390	70.3
ii.	WRITTEN PAPER		0.01	M.Tons	374	405	92.3
iii.	PACKING & OTHER PAPER		0.01	M.Tons	1,751	1,800	97.3
iv.	ADVERTISING MATERIAL		0.01	M.Tons	27	26	103.8
9.	<u>PHARMACEUTICALS</u>	78	6.37				
i.	TABLETS		1.67	"000" NOs.	1,888,058	1,833,066	103.0
ii.	LIQUIDS/SYRUPS		1.97	"000" Liters.	9,001	8,828	102.0
iii.	CAPSULES		1.36	"000" NOs.	359,404	401,017	89.6
iv.	INJECTIONS		1.22	"000" NOs.	130,453	119,699	109.0
v.	OINTMENT		0.15	KGs.	199,418	153,399	130.0
10.	<u>ACID, ALKALIES & SALT</u>	3	0.04				
i.	SULPHURIC ACID		0.04	M.Tons	2,237	2,432	92.0
11.	<u>FERTILIZER</u>	3	3.50				
i.	UREA		3.50	M.Tons	239,261	246,899	96.9
ii.	AMONIA		3.50	M.Tons	47,641	48,483	98.3
iii.	DAP		3.50	M.Tons	77,136	75,672	101.9
12.	<u>PAINTS & VARNISH</u>	9	0.32				
i.	PAINTS		0.32	M.Tons	88	86	102.3
ii.	VARNISH		0.32	"000" Liters.	199	227	87.7
13.	<u>SOAP</u>	38	1.66				
i.	WASHING SOAP		1.66	M.Tons	5,144	5,178	99.3
ii.	DETERGENT POWDER		1.66	M.Tons	14,070	15,465	91.0
iii.	TOILET SOAP		1.66	M.Tons	2,256	2,374	95.0
iv.	TOOTH PASTE		1.66	M.Tons	930	885	105.1

Sr. No.	Industrial Sector/ Items	No. of Industrial Units as per CMI 2005-06	WEIGHT (2005-06)	Unit of Quantity	Production		Index of Production in Nov:2020 with Oct: 2020
					Nov:2020	Oct:2020	
14.	<u>PETROLEUM PRODUCTS</u>	2	9.32				
i.	L.P.G		9.32	"000" Liters.	2,454	2,165	113.4
ii.	NAPHTHA SOLVENT		9.32	"000" Liters.	14,400	20,284	71.0
iii.	KEROSENE OIL		9.32	"000" Liters.	-	1,295	0.0
iv.	H.S.D		9.32	"000" Liters.	129,261	148,208	87.2
v.	FURNACE OIL		9.32	"000" Liters.	58,545	60,988	96.0
vi.	ASPHALT 80-100		9.32	"000" Liters.	431	0	0.0
vii.	ASPHALT 60-70		9.32	"000" Liters.	4,112	3,673	112.0
viii.	MOTOR SPRIT		9.32	"000" Liters.	19,432	19,432	100.0
ix.	JET FUEL		9.32	"000" Liters.	11,273	12,790	88.1
x.	LUBRICATING OIL		9.32	"000" Liters.	19,168	19,020	100.8
xi.	OTHERS		0.00	"000" Liters.	35,731	34,857	102.5
15.	<u>TYRES & TUBES</u>	4	0.41				
i.	MOTOR TYRE		0.41	Nos.	196,569	243,667	80.7
ii.	MOTOR TUBE		0.41	Nos.	18,964	18,485	102.6
16.	<u>CEMENT</u>	11	3.86				
i.	CEMENT		3.86	M.Tons	466,920	513,168	91.0
17.	<u>M.S.PRODUCTS</u>	28	4.88				
i.	M.S PRODUCTS		4.88	M.Tons	3,902	4,789	81.5
18.	<u>STEEL PRODUCTS</u>	2	1.02				
i.	STEEL PRODUCTS		1.02	M.Tons	3,291	4,268	77.1
19.	<u>SAFETY RAZOR BLADE</u>	1	0.40				
i.	SAFETY RAZOR BLAD		0.04	"000" NOs.	72,338	92,092	78.5
20.	<u>SEWING MACHINES</u>	3	0.25				
i.	SEWING MACHINES		0.25	Nos.	1,430	1,495	95.7
21.	<u>ELEC. APPLIANCES</u>	3	2.21				
i.	REFRIGERATORS		0.11	Nos.	45,818	50,228	91.2
ii.	AIR-CONDITIONERS		0.60	Nos.	393	2,573	15.3
iii.	DEEP FREEZERS		0.50	Nos.	223	761	29.3
iv.	WASHING MACHINES		0.50	Nos.	31,595	28,286	111.7
v.	MICROWAVE OVEN		0.50	Nos.	42,075	47,330	88.9
22.	<u>AUTOMOBILE</u>	17	11.15				
i.	TRUCKS		2.71	Nos.	274	283	96.8
ii.	BUSES		0.77	Nos.	73	35	208.6
iii.	LCV'S		2.50	Nos.	2,028	1,221	166.1
iv.	MOTOR CYCLES		2.06	Nos.	164,855	166,135	99.2
v.	TRACTORS		0.25	Nos.	3,807	3,977	95.7
vi.	CARS		0.50	Nos.	11,352	11,601	97.9
vii.	VANS & JEEPS		1.18	Nos.	883	714	123.7
viii.	THREE WHEELERS		1.18	Nos.	4,170	4,829	86.4
	Grand Total	537	70.65				

Table 3: Production of Selected Items Pertaining to Large-Scale Manufacturing Sector, November-2020 Vs November-2019

Sr. No.	Industrial Sector/ Items	No. of Industrial Units as per CMI 2005-06	WEIGHT (2005-06)	Unit of Quantity	Production		Index of Production in Nov:2020 with Nov:2019
					Nov:2020	Nov:2019	
1.	<u>VEGETABLE GHEE</u>	35	1.61				
i.	VEGETABLE GHEE		1.11	M.Tons	36,974	33,726	109.6
ii.	COOKING OIL		0.50	M.Tons	16,316	15,252	107.0
2.	<u>SUGAR</u>	26	4.32				
i.	SUGAR		4.32	M.Tons	93,676	17,684	529.7
3.	<u>TEA</u>	7	1.23				
i.	TEA		1.23	M.Tons	5,029	4,473	112.4
4.	<u>BEVERAGES</u>	13	0.85				
i.	BEVERAGES		0.85	"000" NOs.	79,767	81,722	97.6
ii.	WATER*		0.85	"000" NOs.	15,850	1,953	811.6
5.	<u>COTTON TEXTILE</u>	133	13.65				
i.	COTTON YARN		9.10	M.Tons	17,411	14,153	123.0
ii.	COTTON FABRICS		4.13	"000" Sq. M	20,464	12,203	167.7
iii.	M.M.YARN		0.42	M.Tons	1,485	971	152.9
6.	<u>LEATHER TANNING</u>	30	0.29				
i.	UPPER LEATHER		0.07	"000" Sq. M.	892	1,287	69.3
ii.	WET BLUE TANNED		0.22	"000" Sq. M.	86	105	81.9
7.	<u>COTTON GINNING & PRESSING</u>	85	3.30				
i.	C.G.& PRESSING		3.30	Bales	1,009,892	853,107	118.4
8.	<u>PAPER & PAPER BOARD</u>	6	0.01				
i.	PRINTING PAPER		0.01	M.Tons	274	407	67.3
ii.	WRITTEN PAPER		0.01	M.Tons	374	276	135.5
iii.	PACKING & OTHER PAPER		0.01	M.Tons	1,751	2,150	81.4
iv.	ADVERTISING MATERIAL		0.01	M.Tons	27	33	81.8
9.	<u>PHARMACEUTICALS</u>	78	6.37				
i.	TABLETS		1.67	"000" NOs.	1,888,058	2,102,263	89.8
ii.	LIQUIDS/SYRUPS		1.97	"000" Liters.	9,001	7,353	122.4
iii.	CAPSULES		1.36	"000" NOs.	359,404	342,836	104.8
iv.	INJECTIONS		1.22	"000" NOs.	130,453	96,292	135.5
v.	OINTMENT		0.15	KGs.	199,418	233,610	85.4
10.	<u>ACID, ALKALIES & SALT</u>	3	0.04				
i.	SULPHURIC ACID		0.04	M.Tons	2,237	2,691	83.1
11.	<u>FERTILIZER</u>	3	3.50				
i.	UREA		3.50	M.Tons	239,261	212,402	112.6
ii.	AMONIA		3.50	M.Tons	47,641	117,902	40.4
iii.	DAP		3.50	M.Tons	77,136	72,857	105.9
12.	<u>PAINTS & VARNISH</u>	9	0.32				
i.	PAINTS		0.32	M.Tons	88	117	75.2
ii.	VARNISH		0.32	"000" Liters.	199	528	37.7
13.	<u>SOAP</u>	38	1.66				
i.	WASHING SOAP		1.66	M.Tons	5,144	5,251	98.0
ii.	DETERGENT POWDER		1.66	M.Tons	14,070	14,518	96.9
iii.	TOILET SOAP		1.66	M.Tons	2,256	1,450	155.6
iv.	TOOTH PASTE		1.66	M.Tons	930	780	119.2

Sr. No.	Industrial Sector/ Items	No. of Industrial Units as per CMI 2005-06	WEIGHT (2005-06)	Unit of Quantity	Production		Index of Production in Nov:2020 with Nov:2019
					Nov:2020	Nov:2019	
14.	<u>PETROLEUM PRODUCTS</u>	2	9.32				
i.	L.P.G		9.32	"000" Liters.	2,454	2,846	86.2
ii.	NAPHTHA SOLVENT		9.32	"000" Liters.	14,400	29,174	49.4
iii.	KEROSENE OIL		9.32	"000" Liters.	-	1,619	0.0
iv.	H.S.D		9.32	"000" Liters.	129,261	116,844	110.6
v.	FURNACE OIL		9.32	"000" Liters.	58,545	60,538	96.7
vi.	ASPHALT 80-100		9.32	"000" Liters.	-	920	0.0
vii.	ASPHALT 60-70		9.32	"000" Liters.	4,112	3,589	114.6
viii.	MOTOR SPRIT		9.32	"000" Liters.	19,432	21,291	91.3
ix.	JET FUEL		9.32	"000" Liters.	11,273	19,903	56.6
x.	LUBRICATING OIL		9.32	"000" Liters.	19,168	-	0.0
xi.	OTHERS		0.00	"000" Liters.	35,731	28,745	124.3
15.	<u>TYRES & TUBES</u>	4	0.41				
i.	MOTOR TYRE		0.41	Nos.	196,569	204,060	96.3
ii.	MOTOR TUBE		0.41	Nos.	18,964	61,416	30.9
16.	<u>CEMENT</u>	11	3.86				
i.	CEMENT		3.86	M.Tons	466,920	158,793	294.0
17.	<u>M.S.PRODUCTS</u>	28	4.88				
i.	M.S PRODUCTS		4.88	M.Tons	3,902	4,493	86.9
18.	<u>STEEL PRODUCTS</u>	2	1.02				
i.	STEEL PRODUCTS		1.02	M.Tons	3,291	-	0.0
19.	<u>SAFETY RAZOR BLADE</u>	1	0.40				
i.	SAFETY RAZOR BLAD		0.04	"000" NOs.	72,338	62,307	116.1
20.	<u>SEWING MACHINES</u>	3	0.25				
i.	SEWING MACHINES		0.25	Nos.	1,430	2,880	49.7
21.	<u>ELEC. APPLIANCES</u>	3	2.21				
i.	REFRIGERATORS		0.11	Nos.	45,818	26,480	173.0
ii.	AIR-CONDITIONERS		0.60	Nos.	393	311	126.4
iii.	DEEP FREEZERS		0.50	Nos.	223	148	150.7
iv.	WASHING MACHINES		0.50	Nos.	31,595	27,865	113.4
v.	MICROWAVE OVEN		0.50	Nos.	42,075	26,088	161.3
22.	<u>AUTOMOBILE</u>	17	11.15				
i.	TRUCKS		2.71	Nos.	274	305	89.8
ii.	BUSES		0.77	Nos.	73	64	114.1
iii.	LCV'S		2.50	Nos.	2,028	644	314.9
iv.	MOTOR CYCLES		2.06	Nos.	164,855	141,167	116.8
v.	TRACTORS		0.25	Nos.	3,807	2,409	158.0
vi.	CARS		0.50	Nos.	11,352	6,744	168.3
vii.	VANS & JEEPS		1.18	Nos.	883	363	243.3
viii.	THREE WHEELERS		1.18	Nos.	4,170	3,834	108.8
	Grand Total	537	70.65				

Table 4: Production of Selected Items Pertaining to Large-Scale Manufacturing Sector,
2020-21 (Jul to Nov) Vs 2019-20 (Jul to Nov)

Sr. No.	Industrial Sector/ Items	No. of Industrial Units as per CMI 2005-06	WEIGHT (2005-06)	Unit of Quantity	Production		Index of Production in 2020-21 (Jul-Nov) with 2019-20 (Jul-Nov)
					2020-21 (Jul-Nov)	2019-20 (Jul-Nov)	
1.	<u>VEGETABLE GHEE</u>	35	1.61				
i.	VEGETABLE GHEE		1.11	M.Tons	175,362	172,150	101.9
ii.	COOKING OIL		0.50	M.Tons	75,075	73,497	102.1
2.	<u>SUGAR</u>	26	4.32				
i.	SUGAR		4.32	M.Tons	95,146	17,684	538.0
3.	<u>TEA</u>	7	1.23				
i.	TEA		1.23	M.Tons	20,826	23,206	89.7
4.	<u>BEVERAGES</u>	13	0.85				
i.	BEVERAGES		0.85	"000" NOs.	489,995	404,291	121.2
ii.	WATER*		0.85	"000" NOs.	89,051	75,795	117.5
5.	<u>COTTON TEXTILE</u>	133	13.65				
i.	COTTON YARN		9.10	M.Tons	95,472	92,306	103.4
ii.	COTTON FABRICS		4.13	"000" Sq. M	86,286	48,829	176.7
iii.	M.M.YARN		0.42	M.Tons	4,371	5,544	78.8
6.	<u>LEATHER TANNING</u>	30	0.29				
i.	UPPER LEATHER		0.07	"000" Sq. M.	3,411	5,879	58.0
ii.	WET BLUE TANNED		0.22	"000" Sq. M.	401	527	76.1
7.	<u>COTTON GINNING & PRESSING</u>	85	3.30				
i.	C.G.& PRESSING		3.30	Bales	2,292,938	2,755,695	83.2
8.	<u>PAPER & PAPER BOARD</u>	6	0.01				
i.	PRINTING PAPER		0.01	M.Tons	1,543	1,850	83.4
ii.	WRITTEN PAPER		0.01	M.Tons	1,349	1,380	97.7
iii.	PACKING & OTHER PAPER		0.01	M.Tons	8,221	7,973	103.1
iv.	ADVERTISING MATERIAL		0.01	M.Tons	121	120	100.8
9.	<u>PHARMACEUTICALS</u>	78	6.37				
i.	TABLETS		1.67	"000" NOs.	9,972,553	10,099,551	98.7
ii.	LIQUIDS/SYRUPS		1.97	"000" Liters.	35,277	29,285	120.5
iii.	CAPSULES		1.36	"000" NOs.	1,683,226	1,313,757	128.1
iv.	INJECTIONS		1.22	"000" NOs.	594,284	407,965	145.7
v.	OINTMENT		0.15	KGs.	1,007,677	1,079,227	93.4
10.	<u>ACID, ALKALIES & SALT</u>	3	0.04				
i.	SULPHURIC ACID		0.04	M.Tons	11,494	13,338	86.2
11.	<u>FERTILIZER</u>	3	3.50				
i.	UREA		3.50	M.Tons	1,184,656	1,151,140	102.9
ii.	AMONIA		3.50	M.Tons	225,436	379,259	59.4
iii.	DAP		3.50	M.Tons	373,315	371,878	100.4
12.	<u>PAINTS & VARNISH</u>	9	0.32				
i.	PAINTS		0.32	M.Tons	343	614	55.9
ii.	VARNISH		0.32	"000" Liters.	1,136	2,193	51.8
13.	<u>SOAP</u>	38	1.66				
i.	WASHING SOAP		1.66	M.Tons	29,217	23,276	125.5
ii.	DETERGENT POWDER		1.66	M.Tons	71,356	70,931	100.6
iii.	TOILET SOAP		1.66	M.Tons	10,456	9,250	113.0
iv.	TOOTH PASTE		1.66	M.Tons	4,188	3,603	116.2

Sr. No.	Industrial Sector/ Items	No. of Industrial Units as per CMI 2005-06	WEIGHT (2005-06)	Unit of Quantity	Production		Index of Production in 2020-21 (Jul-Nov) with 2019-20 (Jul-Nov)
					2020-21 (Jul-Nov)	2019-20 (Jul-Nov)	
14.	<u>PETROLEUM PRODUCTS</u>	2	9.32				
i.	L.P.G		9.32	"000" Liters.	7,970	11,466	69.5
ii.	NAPTHA SOLVENT		9.32	"000" Liters.	90,693	150,179	60.4
iii.	KEROSENE OIL		9.32	"000" Liters.	1,883	3,609	52.2
iv.	H.S.D		9.32	"000" Liters.	646,743	613,076	105.5
v.	FURNACE OIL		9.32	"000" Liters.	259,898	376,562	69.0
vi.	ASPHALT 80-100		9.32	"000" Liters.	1,021	70,448	1.4
vii.	ASPHALT 60-70		9.32	"000" Liters.	17,158	11,002	155.9
viii.	MOTOR SPRIT		9.32	"000" Liters.	98,440	87,867	112.0
ix.	JET FUEL		9.32	"000" Liters.	58,160	68,932	84.4
x.	LUBRICATING OIL		9.32	"000" Liters.	58,351	7,650	762.8
xi.	OTHERS		0.00	"000" Liters.	97,989	156,430	62.6
15.	<u>TYRES & TUBES</u>	4	0.41				
i.	MOTOR TYRE		0.41	Nos.	1,088,436	1,063,259	102.4
ii.	MOTOR TUBE		0.41	Nos.	105,292	269,894	39.0
16.	<u>CEMENT</u>	11	3.86				
i.	CEMENT		3.86	M.Tons	2,184,042	586,457	372.4
17.	<u>M.S.PRODUCTS</u>	28	4.88				
i.	M.S PRODUCTS		4.88	M.Tons	32,914	21,332	154.3
18.	<u>STEEL PRODUCTS</u>	2	1.02				
i.	STEEL PRODUCTS		1.02	M.Tons	7,559	-	0.0
19.	<u>SAFETY RAZOR BLADE</u>	1	0.40				
i.	SAFETY RAZOR BLAD		0.04	"000" NOs.	363,315	336,322	108.0
20.	<u>SEWING MACHINES</u>	3	0.25				
i.	SEWING MACHINES		0.25	Nos.	7,145	15,070	47.4
21.	<u>ELEC. APPLIANCES</u>	3	2.21				
i.	REFRIGERATORS		0.11	Nos.	198,173	226,748	87.4
ii.	AIR-CONDITIONERS		0.60	Nos.	29,117	14,931	195.0
iii.	DEEP FREEZERS		0.50	Nos.	7,407	4,509	164.3
iv.	WASHING MACHINES		0.50	Nos.	136,766	115,588	118.3
v.	MICROWAVE OVEN		0.50	Nos.	179,451	141,461	126.9
22.	<u>AUTOMOBILE</u>	17	11.15				
i.	TRUCKS		2.71	Nos.	1,326	1,462	90.7
ii.	BUSES		0.77	Nos.	233	271	86.0
iii.	LCV'S		2.50	Nos.	6,957	7,268	95.7
iv.	MOTOR CYCLES		2.06	Nos.	863,352	627,412	137.6
v.	TRACTORS		0.25	Nos.	19,011	15,887	119.7
vi.	CARS		0.50	Nos.	50,527	52,489	96.3
vii.	VANS & JEEPS		1.18	Nos.	3,252	1,893	171.8
viii.	THREE WHEELERS		1.18	Nos.	23,844	16,517	144.4
	Grand Total	537	70.65				

Table 5: Employment in Selected Large-Scale Manufacturing Sector, November-2020 Vs October-2020

Sr. No.	Industrial Sector/ Items	No. of Industrial Units as per CMI 2005-06	Total Employees		Production Worker	
			Nov:2020	Oct:2020	Nov:2020	Oct:2020
1	<u>VEGETABLE GHEE</u>	35	2,591	2,591	1,354	1,354
2	<u>SUGAR</u>	26	9,364	7,575	6,524	6,223
3	<u>TEA</u>	7	3,059	3,029	2,623	2,585
4	<u>BEVERAGES</u>	13	3,245	3,204	1,620	1,230
5	<u>COTTON TEXTILE</u>	133	53,741	54,093	41,043	41,422
6	<u>LEATHER TANNING</u>	30	6,715	6,710	5,620	5,629
7	<u>PAPER & PAPER BOARD</u>	6	2,206	2,184	1,568	1,554
8	<u>PHARMACEUTICALS</u>	78	7,432	6,656	3,535	3,182
9	<u>ACID, ALKALIES & SALT</u>	3	18	18	13	13
10	<u>FERTILIZER</u>	3	978	981	815	818
11	<u>PAINTS & VARNISH</u>	9	103	103	50	50
12	<u>SOAP</u>	38	1,921	1,921	1,659	1,659
13	<u>PETROLEUM PRODUCTS</u>	2	430	429	331	331
14	<u>TYRES & TUBES</u>	4	5,676	5,612	4,040	4,012
15	<u>CEMENT</u>	11	5,003	5,082	2,214	2,229
16	<u>STEEL PRODUCTS</u>	2	229	229	148	148
17	<u>M.S PRODUCTS</u>	28	1,087	1,087	851	851
18	<u>SAFETY RAZOR BLAD</u>	1	265	265	243	243
19	<u>SEWING MACHINES</u>	3	410	410	354	354
20	<u>ELEC. APPLIANCES</u>	3	750	750	663	663
21	<u>AUTOMOBILE</u>	17	15,760	15,856	7,515	7,543
22	<u>STORAGE BATTERIES</u>	4	1,648	1,648	1,603	1,619
	Grand Total	456	122,630	120,431	84,383	83,710

Table 6: Employment in Selected Large-Scale Manufacturing Sector, November-2020 Vs November-2019

Sr. No.	Industrial Sector/ Items	No. of Industrial Units as per CMI 2005-06	Employees		Production Worker	
			Nov:2020	Nov:2019	Nov:2020	Nov:2019
1	<u>VEGETABLE GHEE</u>	35	2,591	2,243	1,354	1,626
2	<u>SUGAR</u>	26	9,364	8,610	6,524	5,335
3	<u>TEA</u>	7	3,059	3,213	2,623	2,662
4	<u>BEVERAGES</u>	13	3,245	2,652	1,620	760
5	<u>COTTON TEXTILE</u>	133	53,741	55,888	41,043	42,605
6	<u>LEATHER TANNING</u>	30	6,715	6,569	5,620	5,496
7	<u>PAPER & PAPER BOARD</u>	6	2,206	2,254	1,568	1,652
8	<u>PHARMACEUTICALS</u>	78	7,432	6,143	3,535	3,681
9	<u>ACID, ALKALIES & SALT</u>	3	18	34	13	22
10	<u>FERTILIZER</u>	3	978	966	815	801
11	<u>PAINTS & VARNISH</u>	9	103	106	50	57
12	<u>SOAP</u>	38	1,921	2,750	1,659	2,417
13	<u>PETROLEUM PRODUCTS</u>	2	430	429	331	337
14	<u>TYRES & TUBES</u>	4	5,676	5,888	4,040	4,140
15	<u>CEMENT</u>	11	5,003	4,436	2,214	1,890
16	<u>STEEL PRODUCTS</u>	2	229	9,474	148	6,394
17	<u>M.S PRODUCTS</u>	28	1,087	827	851	670
18	<u>SAFETY RAZOR BLAD</u>	1	265	288	243	253
19	<u>SEWING MACHINES</u>	3	410	416	354	360
20	<u>ELECTRICAL APPARATUS</u>	3	750	750	663	663
21	<u>AUTOMOBILE</u>	17	15,760	15,095	7,515	6,883
22	<u>STORAGE BATTERIES</u>	4	1,648	2,112	1,603	1,648
	Grand Total	456	122,630	131,143	84,383	90,352

*Table 7: Average Monthly Employment in Selected Large Scale Manufacturing Sector,
2020-21 (Jul to Nov) Vs 2019-20 (Jul to Nov)*

Sr. No.	Industrial Sector/ Items	No. of Industrial Units as per CMI 2005-06	Average Monthly Total Employment		Average Monthly Production Worker	
			(Jul-Nov) 2020-21	(Jul-Nov) 2019-20	(Jul-Nov) 2020-21	(Jul-Nov) 2019-20
1	<u>VEGETABLE GHEE</u>	35	2,652	2,219	1,297	1,634
2	<u>SUGAR</u>	26	6,770	8,458	5,633	5,202
3	<u>TEA</u>	7	3,087	3,112	2,637	1,715
4	<u>BEVERAGES</u>	13	3,177	2,633	1,253	836
5	<u>COTTON TEXTILE</u>	133	53,572	54,898	41,157	42,869
6	<u>LEATHER TANNING</u>	30	6,728	6,682	5,632	5,589
7	<u>PAPER & PAPER BOARD</u>	6	2,173	2,256	1,548	1,649
8	<u>PHARMACEUTICALS</u>	78	6,593	6,183	3,163	3,284
9	<u>ACID, ALKALIES & SALT</u>	3	18	34	13	22
10	<u>FERTILIZER</u>	3	982	965	814	800
11	<u>PAINTS & VARNISH</u>	9	105	106	51	57
12	<u>SOAP</u>	38	1,964	2,750	1,671	2,417
13	<u>PETROLEUM PRODUCTS</u>	2	432	433	334	342
14	<u>TYRES & TUBES</u>	4	5,658	5,926	4,034	4,159
15	<u>CEMENT</u>	11	5,140	4,691	2,286	1,967
16	<u>STEEL PRODUCTS</u>	1	138	9,440	89	6,406
17	<u>M.S PRODUCTS</u>	28	1,081	827	839	670
18	<u>SAFETY RAZOR BLAD</u>	1	274	288	245	255
19	<u>SEWING MACHINES</u>	3	410	416	354	360
20	<u>ELECTRICAL APPARATUS</u>	3	750	750	663	663
21	<u>AUTOMOBILE</u>	17	15,891	15,095	7,570	6,906
22	<u>STORAGE BATTERIES</u>	4	1,692	2,132	1,627	1,655
	Grand Total	455	119,288	130,295	82,910	89,457

Annexure – A Proforma/ Questionnaire



**GOVERNMENT OF SINDH
PLANNING & DEVELOPMENT DEPARTMENT
BUREAU OF STATISTICS**

www.sindhbos.gov.pk

Street-13, Block-8, Kehkashan Clifton, Karachi-75600, P.O.Box# 3879

021-99251259
 021-35296415
 m.kazimjafri@hotmail.com

The information supplied will be kept strictly confidential and will be used for statistical purpose only.	REPORT FOR	
	MONTH	YEAR

MONTHLY SURVEY OF INDUSTRIAL PRODUCTION AND EMPLOYMENT IN SINDH.

INDUSTRY CODE

--	--	--	--

Estb: Code

--	--	--	--

LOCATION CODE

--	--

PART-I GENERAL PARTICULARS

- i) Name and Address of the Establishment _____
- ii) Name, Designation, Telephone, Cell and _____
- Fax# of the person to be contacted. _____
- iii) Website and E-mail Address _____

PART-II PRODUCTION DATA

S.No	Major Items of Production	Code	Unit of Quantity	Code	Previous Month	Current Month	Reasons of Growth/ Decline

PART-III WORKING DAYS AND EMPLOYMENT

- i) No. of days establishment worked _____
- ii) No. of Production workers. Male _____ Female _____ Total _____
- iii) No. of Non production workers Male _____ Female _____ Total _____
- TOTAL (ii + iii)** Male _____ Female _____ Total _____

Note: Production Workers mean those who are directly associated with production. It includes those engaged in manufacturing, assembling packing repairing etc. Working Supervisor should also be included, Non production worker mean those who are not directly associated with production it includes Administrative Clerical and Services Staff like Chowkidar, Driver and Sweeper.

Signature _____
Designation _____
Date _____

Annexure – B Important Definitions

Large Scale Manufacturing Industries

Establishments where 10 or more employees are working are called large Scale Manufacturing Industries.

Employees

Employees mean all persons whether part time or full time who work in the establishments and receive remuneration in cash or in kind. Working proprietors, unpaid family workers and home workers are excluded from the category of employee. There are two types of employees Production Workers and Non-Production Workers.

- **Production Workers**

Are engaged in work directly associated with production like manufacturing, assembling, packing, repairing etc. Working supervisors and persons engaged for repairs and maintenance are also included.

- **Non-Production Workers**

Include administrative and professional employees, white-collar office employees, drivers, watchmen/guards, peons, sweepers, office boys, etc.

Annexure – C Data Users

- Ministry of Industries & Production, Government of Pakistan.
- Planning & Development Department, Government of Sindh.
- Pakistan Bureau of Statistics, Government of Pakistan.
- State Bank of Pakistan.
- Provincial Bureaus of Statistics, Punjab, KPK and Baluchistan.
- Research & Training Wing, Planning & Development Department, Government of Sindh.

