

MONTHLY SURVEY OF INDUSTRIAL PRODUCTION & EMPLOYMENT IN SINDH



October, 2020
Industries Section, BOS



**BUREAU OF STATISTICS
PLANNING & DEVELOPMENT DEPARTMENT
GOVERNMENT OF SINDH**

FOR OFFICIAL USE ONLY

Sindh Monthly Survey of Industrial Production & Employment (MIPE)

October, 2020



Bureau of Statistics
Planning & Development Department
Government of Sindh

www.sindhbos.gov.pk
ddindustries.sindhbos.gov.pk

Preface

Monthly Survey of Industrial Production and Employment (MIPE) is being conducted/ published by Sindh Bureau of Statistics on regular basis since 1970s. This report provides important statistics in respect of industrial production & employment of large Scale Manufacturing (LSM) industries in Sindh.

This report contains information on 61 items manufactured in 22 selected large scale industrial sectors covering 537 industrial establishments (selection on the basis of CMI 2005-06). These industries account for 69.6% of total value added of large scale manufacturing sector in Sindh.

MIPE Report provides information regarding General Index and Quantum Index of Manufacturing (QIM) to base period 2005-06, and analytical analysis on the current status of production and employment in manufacturing sector.

All the efforts are made to improve the industrial statistics and hope this report would prove useful to policy makers, planners, researchers and other data users. Suggestion/ recommendations from the users will always be welcomed and appreciated.

Shahzad Fazal Abbasi
Director General
Bureau of Statistics
Planning & Development Department
Government of Sindh

Contents

PREFACE	II
CONTENTS	III
<i>LIST OF TABLES</i>	IV
<i>LIST OF FIGURES</i>	IV
<i>LIST OF EQUATIONS</i>	IV
MIPE TEAM (INDUSTRIES SECTION)	V
INTRODUCTION	1
1. QUESTIONNAIRE/ PROFORMA	2
2. METHODOLOGY	2
3. EDITING	2
4. QUANTUM INDEX OF MANUFACTURING (QIM)	3
REPORT ANALYSIS	4
ANNEXURE – A PROFORMA/ QUESTIONNAIRE	15
ANNEXURE – B IMPORTANT DEFINITIONS	16
ANNEXURE – C DATA USERS	17

List of Tables

TABLE 1: SERIES OF QUANTUM INDEX OF MANUFACTURING (QIM) AT (2005-06=100)	4
TABLE 2: PRODUCTION OF SELECTED ITEMS PERTAINING TO LARGE-SCALE MANUFACTURING SECTOR, OCTOBER-2020 VS SEPTEMBER-2020	6
TABLE 3: PRODUCTION OF SELECTED ITEMS PERTAINING TO LARGE-SCALE MANUFACTURING SECTOR, OCTOBER-2020 VS OCTOBER-2019	8
TABLE 4: PRODUCTION OF SELECTED ITEMS PERTAINING TO LARGE-SCALE MANUFACTURING SECTOR,	10
TABLE 5: EMPLOYMENT IN SELECTED LARGE-SCALE MANUFACTURING SECTOR, OCTOBER-2020 VS SEPTEMBER-2020	12
TABLE 6: EMPLOYMENT IN SELECTED LARGE-SCALE MANUFACTURING SECTOR, OCTOBER-2020 VS OCTOBER-2019	13
TABLE 7: AVERAGE MONTHLY EMPLOYMENT IN SELECTED LARGE SCALE MANUFACTURING SECTOR,	14

List of Figures

FIGURE 1: TREND OF QUANTUM INDEX OF LARGE SCALE MANUFACTURING INDUSTRIES AT BASE YEAR 2005-06	5
FIGURE 2: TREND OF AVERAGE MONTHLY EMPLOYMENT IN LARGE SCALE MANUFACTURING INDUSTRIES	5

List of Equations

EQUATION 1 LASPAYER'S INDEX	3
-----------------------------	---

MIPE Team (Industries Section)

Team Lead:

Muhammad Kazim Jafri

Deputy Director

Team Members:

1. Ms. Rukhsana Aziz

Statistical Officer

2. Ms. Faaeza Atiq

Statistical Officer

Support in Data Collection and Compilation:

1. Mr. Muhammad Younus Bukhari

Jr. Stenographer

2. Mr. Muhammad Akram Bhatti

Statistical Computer

Introduction

Industrial Statistics is very essential tool to track industrial growth and implementation of policies in right directions. This sector has great importance for economic development of country. As per the composition of Pakistan's economy in 2019-20, Agriculture Sector is 19.31%, Industries Sector is 19.29% and Services Sector is 61.4%.

According to the Pakistan Bureau of Statistics, for fiscal year 2020 followed partial lockdown situation faced by industrial sector in the country due to COVID-19. A significant impact has been observed in the manufacturing sector, particularly Large-Scale Manufacturing and Small-Scale Manufacturing. In the industrial sector, 2.64% negative provincial growth has been observed (PBS). From the share of industrial sector 12.48% are manufacturing and more specifically 9.5% is Large Scale Manufacturing (LSM) Sector. The role of Sindh province in the Large Scale Manufacturing is very vital. However, Sindh QIM's trend of overall manufacturing index is on declining side which mainly caused by COVID-19. As the Karachi is the largest metropolitan city of Pakistan, according to Karachi Chamber of Commerce and Industry (KCCI) it produces 15% with an annual Gross Domestic Product (GDP). Sindh Business Register (SBR), 2017 established by Sindh Bureau of Statistics, Planning & Development Department shows that 67% establishments/ factories are located in Karachi Division and remaining 33% are located in other districts of Sindh.

For the timely and quality industrial statistics, Sindh Bureau of Statistics, Planning & Development Department has been conducting Monthly Survey of Industrial Production and Employment (MIPE). This survey report includes 61 items manufactured in 22 large scale Industrial sectors from 537 establishments/ factories in Sindh. The sample of 537 firms was drawn from the last Census of Manufacturing Industries (CMI), 2005-06 and these industries account for 69.6% of total value added in terms of production during 2005-06, CMI. However, the recent CMI 2015-16 has been conducted by PBS, as it will be published that will be used as base year and QIM base year will be shifted from 2005-06 to 2015-16. In addition to collection, compilation, tabulation and processing of manufacturing data, Bureau of Statistics also computes monthly Quantum Index of Manufacturing by using the weights of production. The quantum index is an essential indicator to gauge to aggregate monthly production of province.

1. Questionnaire/ Proforma

A questionnaire/ Proforma is a research instrument consisting of a series of questions and other prompts for the purpose of gathering information from respondents. A pre-tested questionnaire is used for the data collection of industrial inputs related to employment and production, attached at **Annex-A**.

2. Methodology

The basic method of data collection for Sindh MIPE is the posting/ mailing of MIPE Questionnaires. More than 70% monthly returns are received to this Bureau through mail from industrial units. The non-responding or remaining establishments are visited by the officers/ officials of this Bureau, besides this the method of emailing, fax and telephonic approach are also used for collection of monthly returns and increase the response rate.

3. Editing

All the received returns are scrutinized for accuracy and consistency with previous data by the Industries Section of this Bureau. As per *Unit Calculation Sheet* different units of similar products are converted into the reporting units. In case of huge discrepancy between current and previous returns the factory management is approached to rectify that figures. In the absence establishment's return or non-availability of concerned person the average production of last month or the last month information is repeated for equivalence.

4. Quantum Index of Manufacturing (QIM)

A quantum index is an index based on quantity units of goods such as number or weight. Sindh bureau of Statistics is computing Index on Industrial Production using 2005-06 as base year. Index Series is generated by using Laspayer's Index.

$$QIM = \frac{\sum_{i=1}^n \frac{q_{im}}{q_{i0}} w_i}{\sum_{i=1}^n w_i} \times 100$$

Equation 1 Laspayer's Index

q_{im} = Production of i^{th} item during the current month

q_{i0} = Average Production of the same i^{th} item in the base period (2005-06)

w_i = Weight of the i^{th} item in the base period (2005-06)

$\sum_{i=1}^n w_i$ = Total Weight of 22 large scale industrial sectors covering 535 establishments in the base period with respect to the total value added of all the industries covered in CMI in the base year 2005-06. 473809

Report Analysis

Summary findings on the basis of Index of Industrial Production are as follows: decline

- Overall Production in October, 2020 is increased by 8.38% as compared to last (i.e. month September, 2020)
- Overall Production in October, 2020 is significantly increased by 15.58% as compared to corresponding month of last year (i.e. October, 2019)
- Cumulative production from July to October (2020-21) is increased by 3.37% than July to October (2019-20)
- Employment during October, 2020 is raised by 2% as compared to previous month (i.e. September, 2020).
- Employment during October, 2020 is also 6.89% lower than October, 2019.
- Average monthly employment during the period of July-October (2020-21) is 8.94% lower as compared to the corresponding period of July-October (2019-20).

Table 1: Series of Quantum Index of Manufacturing (QIM) at (2005-06=100)

Month/ Year	2015-16	2016-17	2017-18	2018-19	2019-20	2020-21
July	255.7	284.0	327.0	290.8	259.7	294.2
August	266.0	287.7	336.4	265.5	220.9	238.5
September	274.2	281.5	330.9	311.3	266.7	295.4
October	247.0	291.4	355.7	287.0	277.0	320.2
November	283.7	317.1	343.2	273.3	280.3	
December	261.7	302.8	341.5	265.2	223.7	
January	297.4	286.1	374.0	321.3	263.8	
February	293.2	283.3	324.5	309.0	313.2	
March	253.9	275.6	341.4	279.7	258.2	
April	250.6	276.8	338.5	258.2	172.1	
May	254.4	283.9	311.3	248.2	199.8	
June	259.0	258.1	307.4	257.6	324.9	
Average (Geometric Mean)	265.9	285.4	335.5	279.7	251.3	

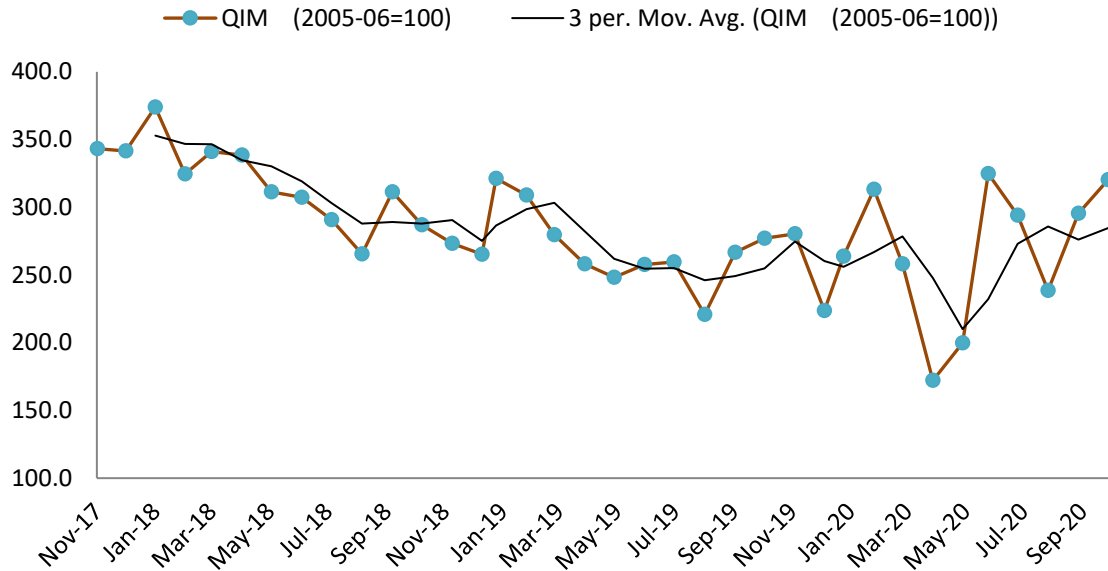


Figure 1: Trend of Quantum Index of Large Scale Manufacturing Industries at base year 2005-06

The quantum index showed relatively positive trend due to the starting season of cotton ginning and sugar production. In the month of Oct, 2020 QIM observed significant increase in the production of Textile, Fertilizer, Electrical Appliances and Petroleum products.

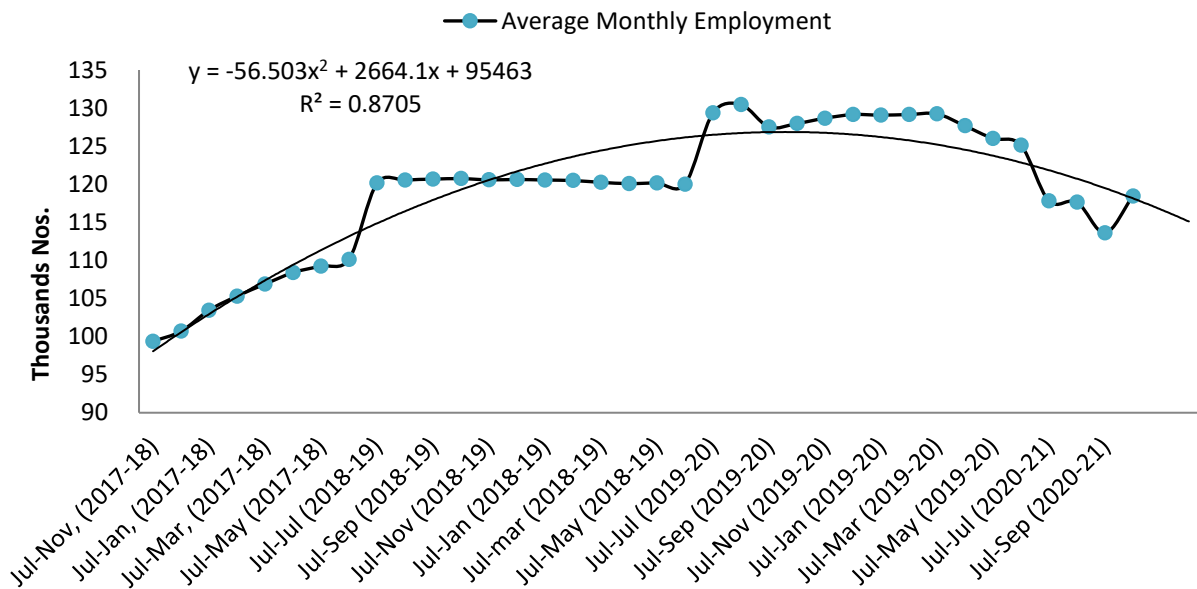


Figure 2: Trend of Average Monthly Employment in Large Scale Manufacturing Industries

From Month-to-Month (MoM) change there is a small increase in Large Scale Manufacturing industries employment which is a positive sign, however average monthly employment of current year is around 9% lower from last fiscal year. Therefore employment is showing unstable trend and second wave of COVID-19 will also affect employment situation and further decline in LSM employment may be observed in near future. The fitted polynomial trend model with $R^2 = 87\%$ is also predicting slight decline in LSM Employment in coming months.

Table 2: Production of Selected Items Pertaining to Large-Scale Manufacturing Sector, October-2020 Vs September-2020

Sr. No.	Industrial Sector/ Items	No. of Industrial Units as per CMI 2005-06	WEIGHT (2005-06)	Unit of Quantity	Production		Index of Production in Oct:2020 with Sep: 2020
					Oct:2020	Sep:2020	
1.	<u>VEGETABLE GHEE</u>	35	1.61				
i.	VEGETABLE GHEE		1.11	M.Tons	36,592	32,053	114.2
ii.	COOKING OIL		0.50	M.Tons	15,688	12,256	128.0
2.	<u>SUGAR</u>	26	4.32				
i.	SUGAR		4.32	M.Tons	1,470	-	0.0
3.	<u>TEA</u>	7	1.23				
i.	TEA		1.23	M.Tons	4,253	3,922	108.4
4.	<u>BEVERAGES</u>	13	0.85				
i.	BEVERAGES		0.85	"000" NOs.	93,964	124,116	75.7
ii.	WATER		0.85	"000" NOs.	20,223	19,363	104.4
5.	<u>COTTON TEXTILE</u>	133	13.65				
i.	COTTON YARN		9.10	M.Tons	20,957	20,849	100.5
ii.	COTTON FABRICS		4.13	"000" Sq. M	17,074	15,461	110.4
iii.	M.M.YARN		0.42	M.Tons	1,025	736	139.3
6.	<u>LEATHER TANNING</u>	30	0.29				
i.	UPPER LEATHER		0.07	"000" Sq. M.	815	679	120.0
ii.	WET BLUE TANNED		0.22	"000" Sq. M.	88	89	98.9
7.	<u>COTTON GINNING & PRESSING</u>	85	3.30				
i.	C.G.& PRESSING		3.30	Bales	681,218	601,828	113.2
8.	<u>PAPER & PAPER BOARD</u>	6	0.01				
i.	PRINTING PAPER		0.01	M.Tons	390	373	104.6
ii.	WRITTEN PAPER		0.01	M.Tons	405	363	111.6
iii.	PACKAGING & OTHER PAPER		0.01	M.Tons	1,800	1,850	97.3
iv.	ADVERTISING MATERIAL		0.01	M.Tons	26	28	92.9
9.	<u>PHARMACEUTICALS</u>	78	6.37				
i.	TABLETS		1.67	"000" NOs.	1,833,066	2,402,480	76.3
ii.	LIQUIDS/SYRUPS		1.97	"000" Liters.	8,828	6,100	144.7
iii.	CAPSULS		1.36	"000" NOs.	401,017	385,986	103.9
iv.	INJECTIONS		1.22	"000" NOs.	119,699	121,065	98.9
v.	OINTMENT		0.15	KGs.	153,399	228,953	67.0
10.	<u>ACID, ALKALIES & SALT</u>	3	0.04				
i.	SULPHURIC ACID		0.04	M.Tons	2,432	2,318	104.9
11.	<u>FERTILIZER</u>	3	3.50				
i.	UREA		3.50	M.Tons	246,899	235,528	104.8
ii.	AMONIA		3.50	M.Tons	48,483	41,329	117.3
iii.	DAP		3.50	M.Tons	75,672	72,300	104.7
12.	<u>PAINTS & VARNISH</u>	9	0.32				
i.	PAINTS		0.32	M.Tons	86	45	191.1
ii.	VARNISH		0.32	"000" Liters.	227	223	101.8
13.	<u>SOAP</u>	38	1.66				
i.	WASHING SOAP		1.66	M.Tons	5,178	6,049	85.6
ii.	DETERGENT POWDER		1.66	M.Tons	15,465	15,466	100.0
iii.	TOILET SOAP		1.66	M.Tons	2,374	2,088	113.7
iv.	TOOTH PASTE		1.66	M.Tons	885	844	104.9

Sr. No.	Industrial Sector/ Items	No. of Industrial Units as per CMI 2005-06	WEIGHT (2005-06)	Unit of Quantity	Production		Index of Production in Oct:2020 with Sep: 2020
					Oct:2020	Sep:2020	
14.	<u>PETROLEUM PRODUCTS</u>	2	9.32				
i.	L.P.G		9.32	"000" Liters.	2,165	925	233.9
ii.	NAPTHA SOLVENT		9.32	"000" Liters.	20,284	27,365	74.1
iii.	KEROSENE OIL		9.32	"000" Liters.	1,295	38	3407.9
iv.	H.S.D		9.32	"000" Liters.	148,208	114,510	129.4
v.	FURNACE OIL		9.32	"000" Liters.	60,988	46,821	130.3
vi.	ASPHALT 80-100		9.32	"000" Liters.	0	0	100.0
vii.	ASPHALT 60-70		9.32	"000" Liters.	3,673	2,742	134.0
viii.	MOTOR SPRIT		9.32	"000" Liters.	19,432	15,051	129.1
ix.	JET FUEL		9.32	"000" Liters.	12,790	15,278	83.7
x.	LUBRICATING OIL		9.32	"000" Liters.	19,020	9,830	193.5
xi.	OTHERS		0.00	"000" Liters.	34,857	24,819	140.4
15.	<u>TYRES & TUBES</u>	4	0.41				
i.	MOTOR TYRE		0.41	Nos.	243,667	276,939	88.0
ii.	MOTOR TUBE		0.41	Nos.	18,485	32,248	57.3
16.	<u>CEMENT</u>	11	3.86				
i.	CEMENT		3.86	M.Tons	513,168	462,549	110.9
17.	<u>M.S.PRODUCTS</u>	28	4.88				
i.	M.S PRODUCTS		4.88	M.Tons	4,789	8,407	57.0
18.	<u>STEEL PRODUCTS</u>	2	0.00				
i.	STEEL PRODUCTS		0.00	M.Tons	4,268	-	0.0
19.	<u>SAFETY RAZOR BLADE</u>	1	0.40				
i.	SAFETY RAZOR BLAD		0.04	"000" NOs.	92,092	75,406	122.1
20.	<u>SEWING MACHINES</u>	3	0.25				
i.	SEWING MACHINES		0.25	Nos.	1,495	1,275	117.3
21.	<u>ELEC. APPLIANCES</u>	3	2.21				
i.	REFRIGERATORS		0.11	Nos.	50,228	26,774	187.6
ii.	AIR-CONDITIONERS		0.60	Nos.	2,573	2,678	96.1
iii.	DEEP FREEZERS		0.50	Nos.	761	287	265.2
iv.	WASHING MACHINES		0.50	Nos.	28,286	30,730	92.0
v.	MICROWAVE OVEN		0.50	Nos.	47,330	34,118	138.7
22.	<u>AUTOMOBILE</u>	17	11.15				
i.	TRUCKS		2.71	Nos.	283	240	117.9
ii.	BUSES		0.77	Nos.	35	47	74.5
iii.	LCV'S		2.50	Nos.	1,221	1,258	97.1
iv.	MOTOR CYCLES		2.06	Nos.	166,135	154,525	107.5
v.	TRACTORS		0.25	Nos.	3,977	4,555	87.3
vi.	CARS		0.50	Nos.	11,601	12,117	95.7
vii.	VANS & JEEPS		1.18	Nos.	714	758	94.2
viii.	THREE WHEELERS		1.18	Nos.	4,829	5,511	87.6
	Grand Total	537	69.63				

Table 3: Production of Selected Items Pertaining to Large-Scale Manufacturing Sector, October-2020 Vs October-2019

Sr. No.	Industrial Sector/ Items	No. of Industrial Units as per CMI 2005-06	WEIGHT (2005-06)	Unit of Quantity	Production		Index of Production in Oct:2020 with Oct:2019
					Oct:2020	Oct:2019	
1.	<u>VEGETABLE GHEE</u>	35	1.61				
i.	VEGETABLE GHEE		1.11	M.Tons	36,592	34,113	107.3
ii.	COOKING OIL		0.50	M.Tons	15,688	15,887	98.7
2.	<u>SUGAR</u>	26	4.32				
i.	SUGAR		4.32	M.Tons	1,470	-	0.0
3.	<u>TEA</u>	7	1.23				
i.	TEA		1.23	M.Tons	4,253	4,206	101.1
4.	<u>BEVERAGES</u>	13	0.85				
i.	BEVERAGES		0.85	"000" NOs.	93,964	87,714	107.1
ii.	WATER		0.85	"000" NOs.	20,223	18,790	107.6
5.	<u>COTTON TEXTILE</u>	133	13.65				
i.	COTTON YARN		9.10	M.Tons	20,957	20,096	104.3
ii.	COTTON FABRICS		4.13	"000" Sq. M	17,074	53	32215.1
iii.	M.M.YARN		0.42	M.Tons	1,025	979	104.7
6.	<u>LEATHER TANNING</u>	30	0.29				
i.	UPPER LEATHER		0.07	"000" Sq. M.	815	1,373	59.4
ii.	WET BLUE TANNED		0.22	"000" Sq. M.	88	101	87.1
7.	<u>COTTON GINNING & PRESSING</u>	85	3.30				
i.	C.G.& PRESSING		3.30	Bales	681,218	780,401	87.3
8.	<u>PAPER & PAPER BOARD</u>	6	0.01				
i.	PRINTING PAPER		0.01	M.Tons	390	369	105.7
ii.	WRITTEN PAPER		0.01	M.Tons	405	313	129.4
iii.	PACKAGING & OTHER PAPER		0.01	M.Tons	1,800	1,801	99.9
iv.	ADVERTISING MATERIAL		0.01	M.Tons	26	26	100.0
9.	<u>PHARMACEUTICALS</u>	78	6.37				
i.	TABLETS		1.67	"000" NOs.	1,833,066	2,041,297	89.8
ii.	LIQUIDS/SYRUPS		1.97	"000" Liters.	8,828	6,843	129.0
iii.	CAPSULS		1.36	"000" NOs.	401,017	246,707	162.5
iv.	INJECTIONS		1.22	"000" NOs.	119,699	85,602	139.8
v.	OINTMENT		0.15	KGs.	153,399	207,789	73.8
10.	<u>ACID, ALKALIES & SALT</u>	3	0.04				
i.	SULPHURIC ACID		0.04	M.Tons	2,432	2,955	82.3
11.	<u>FERTILIZER</u>	3	3.50				
i.	UREA		3.50	M.Tons	246,899	239,719	103.0
ii.	AMONIA		3.50	M.Tons	48,483	121,817	39.8
iii.	DAP		3.50	M.Tons	75,672	75,010	100.9
12.	<u>PAINTS & VARNISH</u>	9	0.32				
i.	PAINTS		0.32	M.Tons	86	122	70.5
ii.	VARNISH		0.32	"000" Liters.	227	445	51.0
13.	<u>SOAP</u>	38	1.66				
i.	WASHING SOAP		1.66	M.Tons	5,178	5,283	98.0
ii.	DETERGENT POWDER		1.66	M.Tons	15,465	14,906	103.8
iii.	TOILET SOAP		1.66	M.Tons	2,374	1,730	137.2
iv.	TOOTH PASTE		1.66	M.Tons	885	796	111.2

Sr. No.	Industrial Sector/ Items	No. of Industrial Units as per CMI 2005-06	WEIGHT (2005-06)	Unit of Quantity	Production		Index of Production in Oct:2020 with Oct:2019
					Oct:2020	Oct:2019	
14.	<u>PETROLEUM PRODUCTS</u>	2	9.32				
i.	L.P.G		9.32	"000" Liters.	2,165	1,721	125.8
ii.	NAPTHA SOLVENT		9.32	"000" Liters.	20,284	48,742	41.6
iii.	KEROSENE OIL		9.32	"000" Liters.	1,295	-	0.0
iv.	H.S.D		9.32	"000" Liters.	148,208	139,049	106.6
v.	FURNACE OIL		9.32	"000" Liters.	60,988	90,503	67.4
vi.	ASPHALT 80-100		9.32	"000" Liters.	-	-	0.0
vii.	ASPHALT 60-70		9.32	"000" Liters.	3,673	-	0.0
viii.	MOTOR SPRIT		9.32	"000" Liters.	19,432	22,129	87.8
ix.	JET FUEL		9.32	"000" Liters.	12,790	9,435	135.6
x.	LUBRICATING OIL		9.32	"000" Liters.	19,020	-	0.0
xi.	OTHERS		0.00	"000" Liters.	34,857	31,269	111.5
15.	<u>TYRES & TUBES</u>	4	0.41				
i.	MOTOR TYRE		0.41	Nos.	243,667	220,491	110.5
ii.	MOTOR TUBE		0.41	Nos.	18,485	45,883	40.3
16.	<u>CEMENT</u>	11	3.86				
i.	CEMENT		3.86	M.Tons	513,168	137,830	372.3
17.	<u>M.S.PRODUCTS</u>	28	4.88				
i.	M.S PRODUCTS		4.88	M.Tons	4,789	4,209	113.8
18.	<u>STEEL PRODUCTS</u>	2	0.00				
i.	STEEL PRODUCTS		0.00	M.Tons	-	-	0.0
19.	<u>SAFETY RAZOR BLADE</u>	1	0.40				
i.	SAFETY RAZOR BLAD		0.04	"000" NOs.	92,092	59,655	154.4
20.	<u>SEWING MACHINES</u>	3	0.25				
i.	SEWING MACHINES		0.25	Nos.	1,495	2,910	51.4
21.	<u>ELEC. APPLIANCES</u>	3	2.21				
i.	REFRIGERATORS		0.11	Nos.	50,228	39,636	126.7
ii.	AIR-CONDITIONERS		0.60	Nos.	2,573	266	967.3
iii.	DEEP FREEZERS		0.50	Nos.	761	416	182.9
iv.	WASHING MACHINES		0.50	Nos.	28,286	27,739	102.0
v.	MICROWAVE OVEN		0.50	Nos.	47,330	19,626	241.2
22.	<u>AUTOMOBILE</u>	17	11.15				
i.	TRUCKS		2.71	Nos.	283	358	79.1
ii.	BUSES		0.77	Nos.	35	50	70.0
iii.	LCV'S		2.50	Nos.	1,221	1,130	108.1
iv.	MOTOR CYCLES		2.06	Nos.	166,135	154,433	107.6
v.	TRACTORS		0.25	Nos.	3,977	3,889	102.3
vi.	CARS		0.50	Nos.	11,601	9,547	121.5
vii.	VANS & JEEPS		1.18	Nos.	714	663	107.7
viii.	THREE WHEELERS		1.18	Nos.	4,829	4,224	114.3
	Grand Total	537	69.63				

Table 4: Production of Selected Items Pertaining to Large-Scale Manufacturing Sector,
2020-21 (Jul to Oct) Vs 2019-20 (Jul to Oct)

Sr. No.	Industrial Sector/ Items	No. of Industrial Units as per CMI 2005-06	WEIGHT (2005-06)	Unit of Quantity	Production		Index of Production in 2020-21 (Jul-Sep) with 2019-20 (Jul-Sep)
					2020-21 (Jul-Oct)	2019-20 (Jul-Oct)	
1.	<u>VEGETABLE GHEE</u>	35	1.61				
i.	VEGETABLE GHEE		1.11	M.Tons	138,388	138,424	100.0
ii.	COOKING OIL		0.50	M.Tons	58,759	58,245	100.9
2.	<u>SUGAR</u>	26	4.32				
i.	SUGAR		4.32	M.Tons	1,470	-	0.0
3.	<u>TEA</u>	7	1.23				
i.	TEA		1.23	M.Tons	15,797	18,733	84.3
4.	<u>BEVERAGES</u>	13	0.85				
i.	BEVERAGES		0.85	"000" NOs.	410,228	322,569	127.2
ii.	WATER		0.85	"000" NOs.	73,201	73,842	99.1
5.	<u>COTTON TEXTILE</u>	133	13.65				
i.	COTTON YARN		9.10	M.Tons	78,061	78,153	99.9
ii.	COTTON FABRICS		4.13	"000" Sq. M	65,822	12,312	179.7
iii.	M.M.YARN		0.42	M.Tons	2,886	4,573	63.1
6.	<u>LEATHER TANNING</u>	30	0.29				
i.	UPPER LEATHER		0.07	"000" Sq. M.	2,519	4,592	54.9
ii.	WET BLUE TANNED		0.22	"000" Sq. M.	315	422	74.6
7.	<u>COTTON GINNING & PRESSING</u>	85	3.30				
i.	C.G. & PRESSING		3.30	Bales	1,283,046	1,902,588	67.4
8.	<u>PAPER & PAPER BOARD</u>	6	0.01				
i.	PRINTING PAPER		0.01	M.Tons	1,269	1,443	88.0
ii.	WRITTEN PAPER		0.01	M.Tons	975	1,104	88.3
iii.	PACKAGING & OTHER PAPER		0.01	M.Tons	6,470	5,823	111.1
iv.	ADVERTISING MATERIAL		0.01	M.Tons	94	87	108.0
9.	<u>PHARMACEUTICALS</u>	78	6.37				
i.	TABLETS		1.67	"000" NOs.	8,084,495	7,997,288	101.1
ii.	LIQUIDS/SYRUPS		1.97	"000" Liters.	26,276	21,932	119.8
iii.	CAPSULES		1.36	"000" NOs.	1,323,822	970,921	136.3
iv.	INJECTIONS		1.22	"000" NOs.	463,831	311,673	148.8
v.	OINTMENT		0.15	KGs.	808,259	845,617	95.6
10.	<u>ACID, ALKALIES & SALT</u>	3	0.04				
i.	SULPHURIC ACID		0.04	M.Tons	9,257	10,647	86.9
11.	<u>FERTILIZER</u>	3	3.50				
i.	UREA		3.50	M.Tons	945,395	938,738	100.7
ii.	AMONIA		3.50	M.Tons	177,795	261,357	68.0
iii.	DAP		3.50	M.Tons	296,179	299,021	99.0
12.	<u>PAINTS & VARNISH</u>	9	0.32				
i.	PAINTS		0.32	M.Tons	255	497	51.3
ii.	VARNISH		0.32	"000" Liters.	937	1,665	56.3
13.	<u>SOAP</u>	38	1.66				
i.	WASHING SOAP		1.66	M.Tons	24,073	18,025	133.6
ii.	DETERGENT POWDER		1.66	M.Tons	57,286	56,413	101.5
iii.	TOILET SOAP		1.66	M.Tons	8,200	7,800	105.1
iv.	TOOTH PASTE		1.66	M.Tons	3,258	2,823	115.4

Sr. No.	Industrial Sector/ Items	No. of Industrial Units as per CMI 2005-06	WEIGHT (2005-06)	Unit of Quantity	Production		Index of Production in 2020-21 (Jul-Sep) with 2019-20 (Jul-Sep)
					2020-21 (Jul-Oct)	2019-20 (Jul-Oct)	
14.	<u>PETROLEUM PRODUCTS</u>	2	9.32				
i.	L.P.G		9.32	"000" Liters.	5,516	8,620	64.0
ii.	NAPHTHA SOLVENT		9.32	"000" Liters.	76,293	121,005	63.0
iii.	KEROSENE OIL		9.32	"000" Liters.	1,883	1,990	94.6
iv.	H.S.D		9.32	"000" Liters.	517,482	496,232	104.3
v.	FURNACE OIL		9.32	"000" Liters.	201,352	316,024	63.7
vi.	ASPHALT 80-100		9.32	"000" Liters.	590	69,528	0.8
vii.	ASPHALT 60-70		9.32	"000" Liters.	13,045	6,863	190.1
viii.	MOTOR SPRIT		9.32	"000" Liters.	79,008	66,605	118.7
ix.	JET FUEL		9.32	"000" Liters.	46,887	49,029	95.6
x.	LUBRICATING OIL		9.32	"000" Liters.	39,183	7,650	512.2
xi.	OTHERS		0.00	"000" Liters.	62,258	127,685	48.8
15.	<u>TYRES & TUBES</u>	4	0.41				
i.	MOTOR TYRE		0.41	Nos.	891,867	859,199	103.8
ii.	MOTOR TUBE		0.41	Nos.	86,328	188,478	41.4
16.	<u>CEMENT</u>	11	3.86				
i.	CEMENT		3.86	M.Tons	1,717,122	457,006	357.7
17.	<u>M.S.PRODUCTS</u>	28	4.88				
i.	M.S PRODUCTS		4.88	M.Tons	29,012	16,839	172.3
18.	<u>STEEL PRODUCTS</u>	2	0.00				
i.	STEEL PRODUCTS		0.00	M.Tons	-	-	0.0
19.	<u>SAFETY RAZOR BLADE</u>	1	0.40				
i.	SAFETY RAZOR BLAD		0.04	"000" NOs.	290,977	274,015	106.2
20.	<u>SEWING MACHINES</u>	3	0.25				
i.	SEWING MACHINES		0.25	Nos.	5,715	12,190	46.9
21.	<u>ELEC. APPLIANCES</u>	3	2.21				
i.	REFRIGERATORS		0.11	Nos.	152,355	200,268	76.1
ii.	AIR-CONDITIONERS		0.60	Nos.	28,724	14,620	196.5
iii.	DEEP FREEZERS		0.50	Nos.	7,184	4,361	164.7
iv.	WASHING MACHINES		0.50	Nos.	105,171	87,723	119.9
v.	MICROWAVE OVEN		0.50	Nos.	137,376	115,373	119.1
22.	<u>AUTOMOBILE</u>	17	11.15				
i.	TRUCKS		2.71	Nos.	1,052	1,157	90.9
ii.	BUSES		0.77	Nos.	160	207	77.3
iii.	LCV'S		2.50	Nos.	4,929	6,624	74.4
iv.	MOTOR CYCLES		2.06	Nos.	698,497	446,245	143.7
v.	TRACTORS		0.25	Nos.	15,204	13,478	112.8
vi.	CARS		0.50	Nos.	39,175	45,745	85.6
vii.	VANS & JEEPS		1.18	Nos.	2,369	1,530	154.8
viii.	THREE WHEELERS		1.18	Nos.	19,674	12,683	155.1
	Grand Total	537	69.63				

Table 5: Employment in Selected Large-Scale Manufacturing Sector, October-2020 Vs September-2020

Sr. No.	Industrial Sector/ Items	No. of Industrial Units as per CMI 2005-06	Total Employees		Production Worker	
			Oct:2020	Sep:2020	Oct:2020	Sep:2020
1	<u>VEGETABLE GHEE</u>	35	2,591	2,679	1,354	1,245
2	<u>SUGAR</u>	26	7,575	5,622	6,223	5,018
3	<u>TEA</u>	7	3,029	3,120	2,585	2,665
4	<u>BEVERAGES</u>	13	3,204	3,204	1,230	1,231
5	<u>COTTON TEXTILE</u>	133	54,093	53,569	41,422	41,223
6	<u>LEATHER TANNING</u>	30	6,710	6,714	5,629	5,617
7	<u>PAPER & PAPER BOARD</u>	6	2,184	2,136	1,554	1,544
8	<u>PHARMACEUTICALS</u>	78	6,656	6,361	3,182	3,033
9	<u>ACID, ALKALIES & SALT</u>	3	18	18	13	13
10	<u>FERTILIZER</u>	3	981	981	818	818
11	<u>PAINTS & VARNISH</u>	9	103	106	50	50
12	<u>SOAP</u>	38	1,921	1,921	1,659	1,659
13	<u>PETROLEUM PRODUCTS</u>	2	429	429	331	331
14	<u>TYRES & TUBES</u>	4	5,612	5,672	4,012	4,060
15	<u>CEMENT</u>	11	5,082	5,203	2,229	2,328
16	<u>STEEL PRODUCTS</u>	2	229	-	148	-
17	<u>M.S PRODUCTS</u>	28	1,087	1,091	851	857
18	<u>SAFETY RAZOR BLAD</u>	1	265	266	243	244
19	<u>SEWING MACHINES</u>	3	410	410	354	354
20	<u>ELEC. APPLIANCES</u>	3	750	750	663	663
21	<u>AUTOMOBILE</u>	17	15,856	15,928	7,543	7,571
22	<u>STORAGE BATTERIES</u>	4	1,648	1,648	1,619	1,621
	Grand Total	456	120,431	118,060	83,710	82,296

Table 6: Employment in Selected Large-Scale Manufacturing Sector, October-2020 Vs October-2019

Sr. No.	Industrial Sector/ Items	No. of Industrial Units as per CMI 2005-06	Employees		Production Worker	
			Oct:2020	Oct:2019	Oct:2020	Oct:2019
1	<u>VEGETABLE GHEE</u>	35	2,591	2,217	1,354	1,634
2	<u>SUGAR</u>	26	7,575	8,154	6,223	5,167
3	<u>TEA</u>	7	3,029	3,124	2,585	2,662
4	<u>BEVERAGES</u>	13	3,204	2,656	1,230	760
5	<u>COTTON TEXTILE</u>	133	54,093	54,651	41,422	43,091
6	<u>LEATHER TANNING</u>	30	6,710	6,547	5,629	5,477
7	<u>PAPER & PAPER BOARD</u>	6	2,184	2,254	1,554	1,652
8	<u>PHARMACEUTICALS</u>	78	6,656	6,145	3,182	3,683
9	<u>ACID, ALKALIES & SALT</u>	3	18	34	13	22
10	<u>FERTILIZER</u>	3	981	966	818	801
11	<u>PAINTS & VARNISH</u>	9	103	106	50	57
12	<u>SOAP</u>	38	1,921	2,750	1,659	2,417
13	<u>PETROLEUM PRODUCTS</u>	2	429	434	331	342
14	<u>TYRES & TUBES</u>	4	5,612	5,888	4,012	4,140
15	<u>CEMENT</u>	11	5,082	4,436	2,229	1,890
16	<u>STEEL PRODUCTS</u>	2	229	9,474	148	6,394
17	<u>M.S PRODUCTS</u>	28	1,087	827	851	670
18	<u>SAFETY RAZOR BLAD</u>	1	265	288	243	255
19	<u>SEWING MACHINES</u>	3	410	416	354	360
20	<u>ELECTRICAL APPARATUS</u>	3	750	750	663	663
21	<u>AUTOMOBILE</u>	17	15,856	15,095	7,543	6,912
22	<u>STORAGE BATTERIES</u>	4	1,648	2,137	1,619	1,633
	Grand Total	456	120,431	129,338	83,710	90,682

*Table 7: Average Monthly Employment in Selected Large Scale Manufacturing Sector,
2020-21 (Jul to Oct) Vs 2019-20 (Jul to Oct)*

Sr. No.	Industrial Sector/ Items	No. of Industrial Units as per CMI 2005-06	Average Monthly Total Employment		Average Monthly Production Worker	
			(Jul-Oct) 2020-21	(Jul-Oct) 2019-20	(Jul-Oct) 2020-21	(Jul-Oct) 2019-20
1	<u>VEGETABLE GHEE</u>	35	2,668	2,213	1,283	1,637
2	<u>SUGAR</u>	26	6,122	8,420	5,410	5,169
3	<u>TEA</u>	7	3,093	3,087	2,641	1,478
4	<u>BEVERAGES</u>	13	3,161	2,628	1,162	855
5	<u>COTTON TEXTILE</u>	133	53,530	54,651	41,186	42,935
6	<u>LEATHER TANNING</u>	30	6,731	6,711	5,635	5,612
7	<u>PAPER & PAPER BOARD</u>	6	2,165	2,256	1,543	1,648
8	<u>PHARMACEUTICALS</u>	78	6,384	6,193	3,070	3,184
9	<u>ACID, ALKALIES & SALT</u>	3	18	34	13	22
10	<u>FERTILIZER</u>	3	983	965	814	800
11	<u>PAINTS & VARNISH</u>	9	105	106	52	57
12	<u>SOAP</u>	38	1,975	2,750	1,674	2,417
13	<u>PETROLEUM PRODUCTS</u>	2	433	435	334	343
14	<u>TYRES & TUBES</u>	4	5,654	5,935	4,033	4,164
15	<u>CEMENT</u>	11	5,174	4,755	2,304	1,986
16	<u>STEEL PRODUCTS</u>	1	116	9,432	75	6,409
17	<u>M.S PRODUCTS</u>	28	1,079	827	836	670
18	<u>SAFETY RAZOR BLAD</u>	1	277	288	245	256
19	<u>SEWING MACHINES</u>	3	410	416	354	360
20	<u>ELECTRICAL APPARATUS</u>	3	750	750	663	663
21	<u>AUTOMOBILE</u>	17	15,924	15,095	7,583	6,912
22	<u>STORAGE BATTERIES</u>	4	1,703	2,137	1,633	1,657
	Grand Total	455	118,452	130,084	82,541	88,502

Annexure – A Proforma/ Questionnaire



**GOVERNMENT OF SINDH
PLANNING & DEVELOPMENT DEPARTMENT
BUREAU OF STATISTICS**

www.sindhbos.gov.pk

Street-13, Block-8, Kehkashan Clifton, Karachi-75600, P.O.Box# 3879

021-99251259
 021-35296415
 m.kazimjafri@hotmail.com

The information supplied will be kept strictly confidential and will be used for statistical purpose only.	REPORT FOR	
	MONTH	YEAR

MONTHLY SURVEY OF INDUSTRIAL PRODUCTION AND EMPLOYMENT IN SINDH.

INDUSTRY CODE

--	--	--	--	--

Estb: Code

--	--	--	--

LOCATION CODE

--	--

PART-I GENERAL PARTICULARS

- i) Name and Address of the Establishment _____
- ii) Name, Designation, Telephone, Cell and _____
- Fax# of the person to be contacted. _____
- iii) Website and E-mail Address _____

PART-II PRODUCTION DATA

S.No	Major Items of Production	Code	Unit of Quantity	Code	Previous Month	Current Month	Reasons of Growth/ Decline

PART-III WORKING DAYS AND EMPLOYMENT

- i) No. of days establishment worked _____
- ii) No. of Production workers. Male _____ Female _____ Total _____
- iii) No. of Non production workers Male _____ Female _____ Total _____
- TOTAL (ii + iii)** Male _____ Female _____ Total _____

Note: Production Workers mean those who are directly associated with production. It includes those engaged in manufacturing, assembling packing repairing etc. Working Supervisor should also be included, Non production worker mean those who are not directly associated with production it includes Administrative Clerical and Services Staff like Chowkidar, Driver and Sweeper.

Signature _____
 Designation _____
 Date _____

Annexure – B Important Definitions

Large Scale Manufacturing Industries

Establishments where 10 or more employees are working are called large Scale Manufacturing Industries.

Employees

Employees mean all persons whether part time or full time who work in the establishments and receive remuneration in cash or in kind. Working proprietors, unpaid family workers and home workers are excluded from the category of employee. There are two types of employees Production Workers and Non-Production Workers.

- **Production Workers**

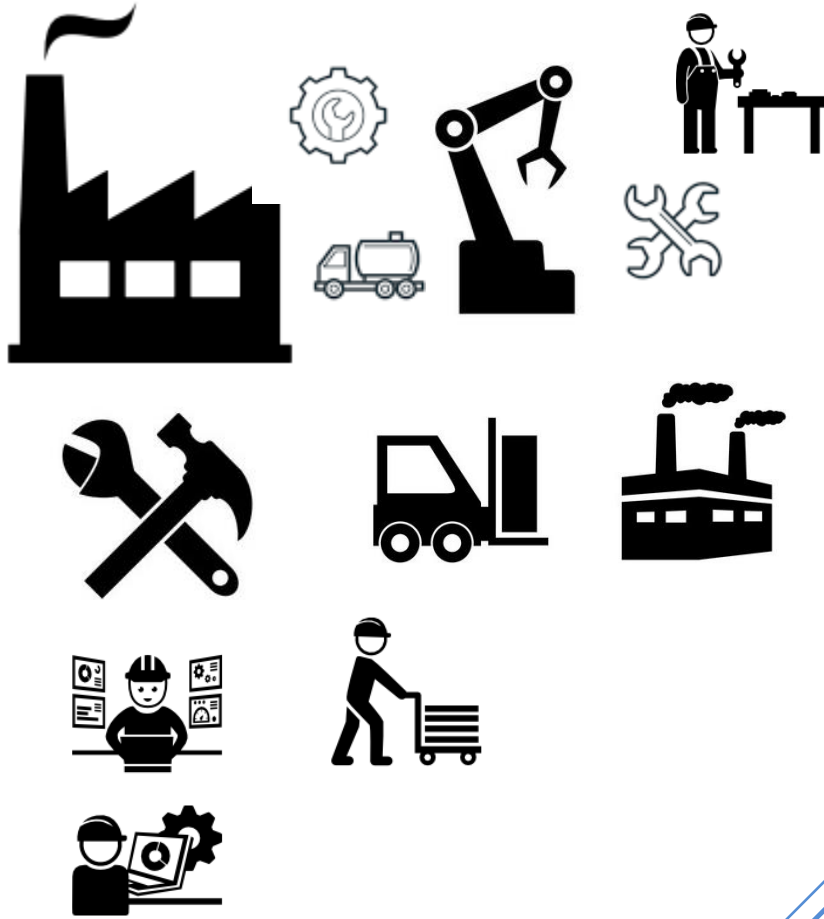
Are engaged in work directly associated with production like manufacturing, assembling, packing, repairing etc. Working supervisors and persons engaged for repairs and maintenance are also included.

- **Non-Production Workers**

Include administrative and professional employees, white-collar office employees, drivers, watchmen/guards, peons, sweepers, office boys, etc.

Annexure – C Data Users

- Ministry of Industries & Production, Government of Pakistan.
- Planning & Development Department, Government of Sindh.
- Pakistan Bureau of Statistics, Government of Pakistan.
- State Bank of Pakistan.
- Provincial Bureaus of Statistics, Punjab, KPK and Baluchistan.
- Research & Training Wing, Planning & Development Department, Government of Sindh.



(Industries Section)
Bureau of Statistics
Planning & Development
Department
Government of Sindh
m.kazimjafri@hotmail.com

ST:13 Block-8 Kehkashan Clifton, Ch. Kahliqz-zaman road, Karachi
Ph. 021-99251259, Email: ddindustries.sindhbos@gmail.com
www.sindhbos.gov.pk