

MONTHLY SURVEY OF INDUSTRIAL PRODUCTION & EMPLOYMENT IN SINDH



**September,
2020**

Industries Section, BOS



**BUREAU OF STATISTICS
PLANNING & DEVELOPMENT DEPARTMENT
GOVERNMENT OF SINDH**

FOR OFFICIAL USE ONLY

Sindh Monthly Survey of Industrial Production & Employment (MIPE) September, 2020



Bureau of Statistics
Planning & Development Department
Government of Sindh
www.sindhbos.gov.pk
ddindustries.sindhbos.gov.pk

Preface

Monthly Survey of Industrial Production and Employment (MIPE) is being conducted/published by Sindh Bureau of Statistics on regular basis since 1970s. This report provides important statistics in respect of industrial production & employment of large Scale Manufacturing (LSM) industries in Sindh.

This report contains information on 61 items manufactured in 22 selected large scale industrial sectors covering 535 industrial establishments (selection on the basis of CMI 2005-06). These industries account for 69.6% of total value added of large scale manufacturing sector in Sindh.

MIPE Report provides information regarding General Index and Quantum Index of Manufacturing (QIM) to base period 2005-06, and analytical analysis on the current status of production and employment in manufacturing sector.

All the efforts are made to improve the industrial statistics and hope this report would prove useful to policy makers, planners, researchers and other data users. Suggestion/recommendations from the users will always be welcomed and appreciated.

Shahzad Fazal Abbasi
Director General
Bureau of Statistics
Planning & Development Department
Government of Sindh

Contents

PREFACE	II
CONTENTS	III
LIST OF TABLES	IV
LIST OF FIGURES	IV
LIST OF EQUATIONS	IV
MIPE TEAM (INDUSTRIES SECTION)	V
INTRODUCTION	1
1. QUESTIONNAIRE/ PROFORMA	2
2. METHODOLOGY	2
3. EDITING	2
4. QUANTUM INDEX OF MANUFACTURING (QIM)	3
REPORT ANALYSIS	4
ANNEXURE – A PROFORMA/ QUESTIONNAIRE	15
ANNEXURE – B IMPORTANT DEFINITIONS	16
ANNEXURE – C DATA USERS	17

List of Tables

TABLE 1: SERIES OF QUANTUM INDEX OF MANUFACTURING (QIM) AT (2005-06=100)	4
TABLE 2: PRODUCTION OF SELECTED ITEMS PERTAINING TO LARGE-SCALE MANUFACTURING SECTOR, SEPTEMBER-2020 VS AUGUST-2020	6
TABLE 3: PRODUCTION OF SELECTED ITEMS PERTAINING TO LARGE-SCALE MANUFACTURING SECTOR, SEPTEMBER-2020 VS SEPTEMBER -2019	8
TABLE 4: PRODUCTION OF SELECTED ITEMS PERTAINING TO LARGE-SCALE MANUFACTURING SECTOR,	10
TABLE 5: EMPLOYMENT IN SELECTED LARGE-SCALE MANUFACTURING SECTOR, SEPTEMBER-2020 VS AUGUST-2020	12
TABLE 6: EMPLOYMENT IN SELECTED LARGE-SCALE MANUFACTURING SECTOR, SEPTEMBER-2020 VS SEPTEMBER-2019	13
TABLE 7: AVERAGE MONTHLY EMPLOYMENT IN SELECTED LARGE SCALE MANUFACTURING SECTOR,	14

List of Figures

FIGURE 1: TREND OF QUANTUM INDEX OF LARGE SCALE MANUFACTURING INDUSTRIES AT BASE YEAR 2005-06	5
FIGURE 2: TREND OF AVERAGE MONTHLY EMPLOYMENT IN LARGE SCALE MANUFACTURING INDUSTRIES	5

List of Equations

EQUATION 1 LASPAYER'S INDEX	3
-----------------------------	---

MIPE Team (Industries Section)

Team Lead:

Muhammad Kazim Jafri

Deputy Director

Team Members:

1. Ms. Rukhsana Aziz

Statistical Officer

2. Ms. Faaeza Atiq

Statistical Officer

Support in Data Collection and Compilation:

1. Mr. Muhammad Younus Bukhari

Jr. Stenographer

2. Mr. Muhammad Akram Bhatti

Statistical Computer

Introduction

Industrial Statistics is very essential tool to track industrial growth and implementation of policies in right directions. This sector has great importance for economic development of country. As per the composition of Pakistan's economy in 2019-20, Agriculture Sector is 19.31%, Industries Sector is 19.29% and Services Sector is 61.4%.

According to the Pakistan Bureau of Statistics, for fiscal year 2020 followed partial lockdown situation faced by industrial sector in the country due to COVID-19. A significant impact has been observed in the manufacturing sector, particularly Large-Scale Manufacturing and Small-Scale Manufacturing. In the industrial sector, 2.64% negative provincial growth has been observed (PBS). From the share of industrial sector 12.48% are manufacturing and more specifically 9.5% is Large Scale Manufacturing (LSM) Sector. The role of Sindh province in the Large Scale Manufacturing is very vital. However, Sindh QIM's trend of overall manufacturing index is on declining side which mainly caused by COVID-19. As the Karachi is the largest metropolitan city of Pakistan, according to Karachi Chamber of Commerce and Industry (KCCI) it produces 15% with an annual Gross Domestic Product (GDP). Sindh Business Register (SBR), 2017 established by Sindh Bureau of Statistics, Planning & Development Department shows that 67% establishments/ factories are located in Karachi Division and remaining 33% are located in other districts of Sindh.

For the timely and quality industrial statistics, Sindh Bureau of Statistics, Planning & Development Department has been conducting Monthly Survey of Industrial Production and Employment (MIPE). This survey report includes 61 items manufactured in 22 large scale Industrial sectors from 535 establishments/ factories in Sindh. The sample of 535 firms was drawn from the last Census of Manufacturing Industries (CMI), 2005-06 and these industries account for 69.6% of total value added in terms of production during 2005-06, CMI. However, the recent CMI 2015-16 has been conducted by PBS, as it will be published that will be used as base year and QIM base year will be shifted from 2005-06 to 2015-16. In addition to collection, compilation, tabulation and processing of manufacturing data, Bureau of Statistics also computes monthly Quantum Index of Manufacturing by using the weights of production. The quantum index is an essential indicator to gauge to aggregate monthly production of province.

1. Questionnaire/ Proforma

A questionnaire/ Proforma is a research instrument consisting of a series of questions and other prompts for the purpose of gathering information from respondents. A pre-tested questionnaire is used for the data collection of industrial inputs related to employment and production, attached at **Annex-A**.

2. Methodology

The basic method of data collection for Sindh MIPE is the posting/ mailing of MIPE Questionnaires. More than 70% monthly returns are received to this Bureau through mail from industrial units. The non-responding or remaining establishments are visited by the officers/ officials of this Bureau, besides this the method of emailing, fax and telephonic approach are also used for collection of monthly returns and increase the response rate.

3. Editing

All the received returns are scrutinized for accuracy and consistency with previous data by the Industries Section of this Bureau. As per *Unit Calculation Sheet* different units of similar products are converted into the reporting units. In case of huge discrepancy between current and previous returns the factory management is approached to rectify that figures. In the absence establishment's return or non-availability of concerned person the average production of last month or the last month information is repeated for equivalence.

4. Quantum Index of Manufacturing (QIM)

A quantum index is an index based on quantity units of goods such as number or weight. Sindh bureau of Statistics is computing Index on Industrial Production using 2005-06 as base year. Index Series is generated by using Laspayer's Index.

$$QIM = \frac{\sum_{i=1}^n \frac{q_{im}}{q_{i0}} w_i}{\sum_{i=1}^n w_i} \times 100$$

Equation 1 Laspayer's Index

q_{im} = Production of i^{th} item during the current month

q_{i0} = Average Production of the same i^{th} item in the base period (2005-06)

w_i = Weight of the i^{th} item in the base period (2005-06)

$\sum_{i=1}^n w_i$ = Total Weight of 22 large scale industrial sectors covering 535 establishments in the base period with respect to the total value added of all the industries covered in CMI in the base year 2005-06.

Report Analysis

Summary findings on the basis of Index of Industrial Production are as follows:

- Overall Production in September, 2020 is increased significantly by 23.8% as compared to last (i.e. month August, 2020)
- Overall Production in September, 2020 is increased by 10.7% as compared to corresponding month of last year (i.e. September, 2019)
- Cumulative production from July to September (2020-21) is decreased by 2.8% than July to September (2019-20)
- Employment during September, 2020 is declined by 10.2% as compared to previous month (i.e. August, 2020).
- Employment during September, 2020 is also 17.8% lower than September, 2019.
- Average monthly employment during the period of July-September (2020-21) is 11.9% lower as compared to the corresponding period of July-September (2019-20).

Table 1: Series of Quantum Index of Manufacturing (QIM) at (2005-06=100)

Month/ Year	2015-16	2016-17	2017-18	2018-19	2019-20	2020-21
July	255.7	284.0	327.0	290.8	259.7	294.2
August	266.0	287.7	336.4	265.5	220.9	238.5
September	274.2	281.5	330.9	311.3	266.7	295.4
October	247.0	291.4	355.7	287.0	277.0	
November	283.7	317.1	343.2	273.3	280.3	
December	261.7	302.8	341.5	265.2	223.7	
January	297.4	286.1	374.0	321.3	263.8	
February	293.2	283.3	324.5	309.0	313.2	
March	253.9	275.6	341.4	279.7	258.2	
April	250.6	276.8	338.5	258.2	172.1	
May	254.4	283.9	311.3	248.2	199.8	
June	259.0	258.1	307.4	257.6	324.9	
Average (Geometric Mean)	265.9	285.4	335.5	279.7	251.3	

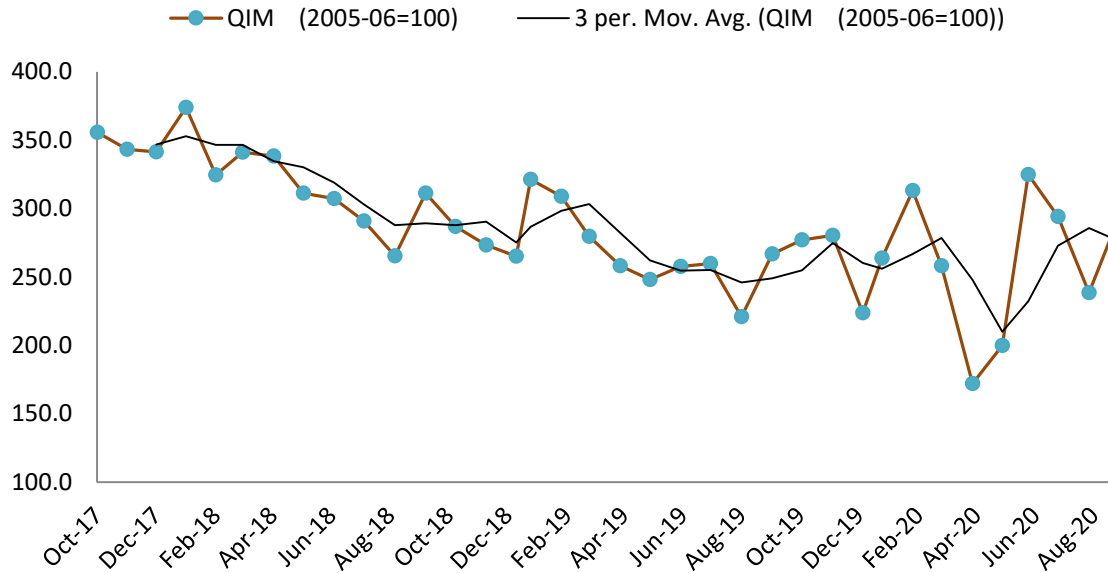


Figure 1: Trend of Quantum Index of Large Scale Manufacturing Industries at base year 2005-06

After very tight lock down the economic activities started since July, 2020 and in the current months the quantum index showed a positive trend which main cause is to increase in the production of pharmaceutical products, few petroleum products and electrical appliances and significant increase in automobile production.

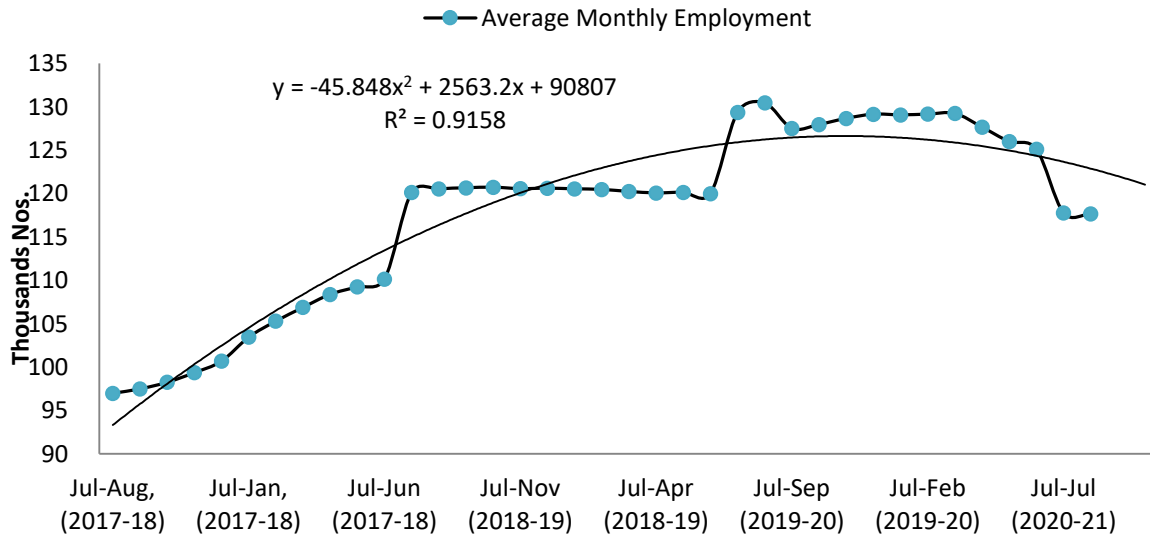


Figure 2: Trend of Average Monthly Employment in Large Scale Manufacturing Industries

Large Scale Manufacturing industries employment is not being stable due to continuous zigzag in overall demand and production. As per Government and health experts the second wave of COVID-19 is expect in October-November, 2020; this may also be reason of future decline in employment. The fitted quadratic trend model with $R^2 = 92\%$ is also predicting decline in LSM Employment in coming months.

Table 2: Production of Selected Items Pertaining to Large-Scale Manufacturing Sector, September-2020 Vs August-2020

Sr. No.	Industrial Sector/ Items	No. of Industrial Units as per CMI 2005-06	WEIGHT (2005-06)	Unit of Quantity	Production		Index of Production in Sep:2020 with Aug: 2020
					Sep:2020	Aug:2020	
1.	<u>VEGETABLE GHEE</u>	35	1.61				
i.	VEGETABLE GHEE		1.11	M.Tons	32,053	34,816	92.1
ii.	COOKING OIL		0.50	M.Tons	12,256	15,706	78.0
2.	<u>SUGAR</u>	26	4.32				
i.	SUGAR		4.32	M.Tons	-	-	
3.	<u>TEA</u>	7	1.23				
i.	TEA		1.23	M.Tons	3,922	3,773	103.9
4.	<u>BEVERAGES</u>	13	0.85				
i.	BEVERAGES		0.85	"000" NOs.	124,116	92,863	133.7
ii.	WATER		0.85	"000" NOs.	19,363	15,277	126.7
5.	<u>COTTON TEXTILE</u>	133	13.65				
i.	COTTON YARN		9.10	M.Tons	20,849	17,770	117.3
ii.	COTTON FABRICS		4.13	"000" Sq. M	15,461	15,965	96.8
iii.	M.M.YARN		0.42	M.Tons	736	687	107.1
6.	<u>LEATHER TANNING</u>	30	0.29				
i.	UPPER LEATHER		0.07	"000" Sq. M.	679	422	160.9
ii.	WET BLUE TANNED		0.22	"000" Sq. M.	89	77	115.6
7.	<u>COTTON GINNING & PRESSING</u>	85	3.30				
i.	C.G.& PRESSING		3.30	Bales	601,828	-	
8.	<u>PAPER & PAPER BOARD</u>	6	0.01				
i.	PRINTING PAPER		0.01	M.Tons	373	253	147.4
ii.	WRITTEN PAPER		0.01	M.Tons	363	207	
iii.	PACKAGING & OTHER PAPER		0.01	M.Tons	1,850	1,289	143.5
iv.	ADVERTISING MATERIAL		0.01	M.Tons	28	17	164.7
9.	<u>PHARMACEUTICALS</u>	78	6.37				
i.	TABLETS		1.67	"000" NOs.	2,402,480	1,823,005	131.8
ii.	LIQUIDS/SYRUPS		1.97	"000" Liters.	6,100	4,574	133.4
iii.	CAPSULES		1.36	"000" NOs.	385,986	260,057	148.4
iv.	INJECTIONS		1.22	"000" NOs.	121,065	98,594	122.8
v.	OINTMENT		0.15	KGs.	228,953	204,477	112.0
10.	<u>ACID, ALKALIES & SALT</u>	3	0.04				
i.	SULPHURIC ACID		0.04	M.Tons	2,318	2,001	115.8
11.	<u>FERTILIZER</u>	3	3.50				
i.	UREA		3.50	M.Tons	235,528	229,284	102.7
ii.	AMONIA		3.50	M.Tons	41,329	44,386	93.1
iii.	DAP		3.50	M.Tons	72,300	73,225	98.7
12.	<u>PAINTS & VARNISH</u>	9	0.32				
i.	PAINTS		0.32	M.Tons	45	63	71.4
ii.	VARNISH		0.32	"000" Liters.	223	278	80.2

Sr. No.	Industrial Sector/ Items	No. of Industrial Units as per CMI 2005-06	WEIGHT (2005-06)	Unit of Quantity	Production		Index of Production in Sep:2020 with Aug: 2020
					Sep:2020	Aug:2020	
13.	<u>SOAP</u>	38	1.66				
i.	WASHING SOAP		1.66	M.Tons	6,049	6,976	86.7
ii.	DETERGENT POWDER		1.66	M.Tons	15,466	11,830	130.7
iii.	TOILET SOAP		1.66	M.Tons	2,088	1,941	107.6
iv.	TOOTH PASTE		1.66	M.Tons	844	726	116.3
14.	<u>PETROLEUM PRODUCTS</u>	2	9.32				
i.	L.P.G		9.32	"000" Liters.	925	1,534	60.3
ii.	NAPHTHA SOLVENT		9.32	"000" Liters.	27,365	12,212	224.1
iii.	KEROSENE OIL		9.32	"000" Liters.	38	-	
iv.	H.S.D		9.32	"000" Liters.	114,510	126,816	90.3
v.	FURNACE OIL		9.32	"000" Liters.	46,821	47,350	98.9
vi.	ASPHALT 80-100		9.32	"000" Liters.	0	-	
vii.	ASPHALT 60-70		9.32	"000" Liters.	2,742	2,055	133.4
viii.	MOTOR SPRIT		9.32	"000" Liters.	15,051	20,508	73.4
ix.	JET FUEL		9.32	"000" Liters.	15,278	9,179	166.4
x.	LUBRICATING OIL		9.32	"000" Liters.	9,830	4,025	244.2
xi.	OTHERS		0.00	"000" Liters.	24,819	972	2552.9
15.	<u>TYRES & TUBES</u>	4	0.41				
i.	MOTOR TYRE		0.41	Nos.	276,939	162,874	170.0
ii.	MOTOR TUBE		0.41	Nos.	32,248	17,811	181.1
16.	<u>CEMENT</u>	11	3.86				
i.	CEMENT		3.86	M.Tons	462,549	280,696	164.8
17.	<u>M.S.PRODUCTS</u>	28	4.88				
i.	M.S PRODUCTS		4.88	M.Tons	8,407	8,212	102.4
18.	<u>SAFETY RAZOR BLADE</u>	1	0.40				
i.	SAFETY RAZOR BLAD		0.04	"000" NOs.	75,406	63,960	117.9
19.	<u>SEWING MACHINES</u>	3	0.25				
i.	SEWING MACHINES		0.25	Nos.	1,275	1,430	89.2
20.	<u>ELEC. APPLIANCES</u>	3	2.21				
i.	REFRIGERATORS		0.11	Nos.	26,774	34,723	77.1
ii.	AIR-CONDITIONERS		0.60	Nos.	2,678	10,148	26.4
iii.	DEEP FREEZERS		0.50	Nos.	287	1,930	14.9
iv.	WASHING MACHINES		0.50	Nos.	30,730	20,277	151.6
v.	MICROWAVE OVEN		0.50	Nos.	34,118	26,372	129.4
21.	<u>AUTOMOBILE</u>	17	11.15				
i.	TRUCKS		2.71	Nos.	240	284	84.5
ii.	BUSES		0.77	Nos.	47	29	162.1
iii.	LCV'S		2.50	Nos.	1,258	1,138	110.5
iv.	MOTOR CYCLES		2.06	Nos.	154,525	135,812	113.8
v.	TRACTORS		0.25	Nos.	4,555	3,355	135.8
vi.	CARS		0.50	Nos.	12,117	7,177	168.8
vii.	VANS & JEEPS		1.18	Nos.	758	512	148.0
viii.	THREE WHEELERS		1.18	Nos.	5,511	4,443	124.0
	Grand Total	535	69.63				

Table 3: Production of Selected Items Pertaining to Large-Scale Manufacturing Sector, September-2020 Vs September -2019

Sr. No.	Industrial Sector/ Items	No. of Industrial Units as per CMI 2005-06	WEIGHT (2005-06)	Unit of Quantity	Production		Index of Production in Sep:2020 with Sep:2019
					Sep:2020	Sep:2019	
1.	<u>VEGETABLE GHEE</u>	35	1.61				
i.	VEGETABLE GHEE		1.11	M.Tons	32,053	34,262	93.6
ii.	COOKING OIL		0.50	M.Tons	12,256	14,460	84.8
2.	<u>SUGAR</u>	26	4.32				
i.	SUGAR		4.32	M.Tons	-	-	
3.	<u>TEA</u>	7	1.23				
i.	TEA		1.23	M.Tons	3,922	4,758	82.4
4.	<u>BEVERAGES</u>	13	0.85				
i.	BEVERAGES		0.85	"000" NOs.	124,116	88,670	140.0
ii.	WATER		0.85	"000" NOs.	19,363	17,558	110.2
5.	<u>COTTON TEXTILE</u>	133	13.65				
i.	COTTON YARN		9.10	M.Tons	20,849	18,883	110.4
ii.	COTTON FABRICS		4.13	"000" Sq. M	15,461	12,205	126.7
iii.	M.M.YARN		0.42	M.Tons	736	1,282	57.4
6.	<u>LEATHER TANNING</u>	30	0.29				
i.	UPPER LEATHER		0.07	"000" Sq. M.	679	1,126	60.3
ii.	WET BLUE TANNED		0.22	"000" Sq. M.	89	107	83.2
7.	<u>COTTON GINNING & PRESSING</u>	85	3.30				
i.	C.G.& PRESSING		3.30	Bales	601,828	1,122,187	53.6
8.	<u>PAPER & PAPER BOARD</u>	6	0.01				
i.	PRINTING PAPER		0.01	M.Tons	373	373	100.1
ii.	WRITTEN PAPER		0.01	M.Tons	363	340	106.7
iii.	PACKAGING & OTHER PAPER		0.01	M.Tons	1,850	1,291	143.3
iv.	ADVERTISING MATERIAL		0.01	M.Tons	28	21	133.3
9.	<u>PHARMACEUTICALS</u>	78	6.37				
i.	TABLETS		1.67	"000" NOs.	2,402,480	1,993,245	120.5
ii.	LIQUIDS/SYRUPS		1.97	"000" Liters.	6,100	5,686	107.3
iii.	CAPSULES		1.36	"000" NOs.	385,986	241,963	159.5
iv.	INJECTIONS		1.22	"000" NOs.	121,065	73,360	165.0
v.	OINTMENT		0.15	KGs.	228,953	217,810	105.1
10.	<u>ACID, ALKALIES & SALT</u>	3	0.04				
i.	SULPHURIC ACID		0.04	M.Tons	2,318	2,164	107.1
11.	<u>FERTILIZER</u>	3	3.50				
i.	UREA		3.50	M.Tons	235,528	227,051	103.7
ii.	AMONIA		3.50	M.Tons	41,329	45,382	91.1
iii.	DAP		3.50	M.Tons	72,300	72,556	99.6
12.	<u>PAINTS & VARNISH</u>	9	0.32				
i.	PAINTS		0.32	M.Tons	45	141	31.9
ii.	VARNISH		0.32	"000" Liters.	223	443	50.3

Sr. No.	Industrial Sector/ Items	No. of Industrial Units as per CMI 2005-06	WEIGHT (2005-06)	Unit of Quantity	Production		Index of Production in Sep:2020 with Sep:2019
					Sep:2020	Sep:2019	
13.	<u>SOAP</u>						
i.	WASHING SOAP	38	1.66				
ii.	DETERGENT POWDER		1.66	M.Tons	6,049	4,147	145.9
iii.	TOILET SOAP		1.66	M.Tons	15,466	14,139	109.4
iv.	TOOTH PASTE		1.66	M.Tons	2,088	2,020	103.4
14.	<u>PETROLEUM PRODUCTS</u>		1.66	M.Tons	844	801	105.4
i.	L.P.G	2	9.32				
ii.	NAPHTHA SOLVENT		9.32	"000" Liters.	925	2,038	45.4
iii.	KEROSENE OIL		9.32	"000" Liters.	27,365	32,317	84.7
iv.	H.S.D		9.32	"000" Liters.	38	960	4.0
v.	FURNACE OIL		9.32	"000" Liters.	114,510	136,276	84.0
vi.	ASPHALT 80-100		9.32	"000" Liters.	46,821	69,231	67.6
vii.	ASPHALT 60-70		9.32	"000" Liters.	0	292	0.0
viii.	MOTOR SPRIT		9.32	"000" Liters.	2,742	-	0.0
ix.	JET FUEL		9.32	"000" Liters.	15,051	21,410	70.3
x.	LUBRICATING OIL		9.32	"000" Liters.	15,278	8,458	180.6
xi.	OTHERS		9.32	"000" Liters.	9,830	-	0.0
15.	<u>TYRES & TUBES</u>		0.00	"000" Liters.	24,819	45,128	55.0
i.	MOTOR TYRE	4	0.41				
ii.	MOTOR TUBE		0.41	Nos.	276,939	202,847	136.5
16.	<u>CEMENT</u>		0.41	Nos.	32,248	53,783	60.0
i.	CEMENT	11	3.86				
17.	<u>M.S.PRODUCTS</u>		3.86	M.Tons	462,549	78,704	587.7
i.	M.S PRODUCTS	28	4.88				
18.	<u>SAFETY RAZOR BLADE</u>		4.88	M.Tons	8,407	3,686	228.1
i.	SAFETY RAZOR BLAD	1	0.40				
19.	<u>SEWING MACHINES</u>		0.04	"000" NOs.	75,406	67,830	111.2
i.	SEWING MACHINES	3	0.25				
20.	<u>ELEC. APPLIANCES</u>		0.25	Nos.	1,275	3,120	40.9
i.	REFRIGERATORS	3	2.21				
ii.	AIR-CONDITIONERS		0.11	Nos.	26,774	40,638	65.9
iii.	DEEP FREEZERS		0.60	Nos.	2,678	860	311.4
iv.	WASHING MACHINES		0.50	Nos.	287	59	486.4
v.	MICROWAVE OVEN		0.50	Nos.	30,730	22,143	138.8
21.	<u>AUTOMOBILE</u>		0.50	Nos.	34,118	30,200	113.0
i.	TRUCKS	17	11.15				
ii.	BUSES		2.71	Nos.	240	233	103.0
iii.	LCV'S		0.77	Nos.	47	35	134.3
iv.	MOTOR CYCLES		2.50	Nos.	1,258	1,471	85.5
v.	TRACTORS		2.06	Nos.	154,525	124,093	124.5
vi.	CARS		0.25	Nos.	4,555	4,016	113.4
vii.	VANS & JEEPS		0.50	Nos.	12,117	9,090	133.3
viii.	THREE WHEELERS		1.18	Nos.	758	97	781.4
	Grand Total		1.18	Nos.	5,511	3,623	152.1
13.	<u>SOAP</u>	535	69.63				

Table 4: Production of Selected Items Pertaining to Large-Scale Manufacturing Sector,
2020-21 (Jul to Sep) Vs 2019-20 (Jul to Sep)

Sr. No.	Industrial Sector/ Items	No. of Industrial Units as per CMI 2005-06	WEIGHT (2005-06)	Unit of Quantity	Production		Index of Production in 2020-21 (Jul-Sep) with 2019-20 (Jul-Sep)
					2020-21 (Jul-Sep)	2019-20 (Jul-Sep)	
1.	<u>VEGETABLE GHEE</u>	35	1.61				
i.	VEGETABLE GHEE		1.11	M.Tons	101,796	104,311	97.6
ii.	COOKING OIL		0.50	M.Tons	43,071	42,358	101.7
2.	<u>SUGAR</u>	26	4.32				
i.	SUGAR		4.32	M.Tons	-	-	
3.	<u>TEA</u>	7	1.23				
i.	TEA		1.23	M.Tons	11,544	14,527	79.5
4.	<u>BEVERAGES</u>	13	0.85				
i.	BEVERAGES		0.85	"000" NOs.	316,264	234,855	134.7
ii.	WATER		0.85	"000" NOs.	52,978	55,052	96.23
5.	<u>COTTON TEXTILE</u>	133	13.65				
i.	COTTON YARN		9.10	M.Tons	57,104	58,057	98.4
ii.	COTTON FABRICS		4.13	"000" Sq. M	48,748	36,573	133.3
iii.	M.M.YARN		0.42	M.Tons	1,861	3,594	51.8
6.	<u>LEATHER TANNING</u>	30	0.29				
i.	UPPER LEATHER		0.07	"000" Sq. M.	1,704	3,219	52.9
ii.	WET BLUE TANNED		0.22	"000" Sq. M.	227	321	70.7
7.	<u>COTTON GINNING & PRESSING</u>	85	3.30				
i.	C.G.& PRESSING		3.30	Bales	601,828	1,122,187	53.6
8.	<u>PAPER & PAPER BOARD</u>	6	0.01				
i.	PRINTING PAPER		0.01	M.Tons	879	1,074	81.9
ii.	WRITTEN PAPER		0.01	M.Tons	570	791	72.0
iii.	PACKAGING & OTHER PAPER		0.01	M.Tons	4,670	4,022	116.1
iv.	ADVERTISING MATERIAL		0.01	M.Tons	68	61	111.5
9.	<u>PHARMACEUTICALS</u>	78	6.37				
i.	TABLETS		1.67	"000" NOs.	6,251,428	5,955,991	105.0
ii.	LIQUIDS/SYRUPS		1.97	"000" Liters.	17,448	15,089	115.6
iii.	CAPSULS		1.36	"000" NOs.	922,805	724,214	127.4
iv.	INJECTIONS		1.22	"000" NOs.	344,132	226,071	152.2
v.	OINTMENT		0.15	KGs.	654,861	637,828	102.7
10.	<u>ACID, ALKALIES & SALT</u>	3	0.04				
i.	SULPHURIC ACID		0.04	M.Tons	6,825	7,692	88.7
11.	<u>FERTILIZER</u>	3	3.50				
i.	UREA		3.50	M.Tons	698,496	699,019	99.9
ii.	AMONIA		3.50	M.Tons	129,312	139,540	92.7
iii.	DAP		3.50	M.Tons	220,507	224,011	98.4
12.	<u>PAINTS & VARNISH</u>	9	0.32				
i.	PAINTS		0.32	M.Tons	169	375	45.1
ii.	VARNISH		0.32	"000" Liters.	710	1,220	58.2

Sr. No.	Industrial Sector/ Items	No. of Industrial Units as per CMI 2005-06	WEIGHT (2005-06)	Unit of Quantity	Production		Index of Production in 2020-21 (Jul-Sep) with 2019-20 (Jul-Sep)
					2020-21 (Jul-Sep)	2019-20 (Jul-Sep)	
13.	<u>SOAP</u>	38	1.66				
i.	WASHING SOAP		1.66	M.Tons	18,895	12,742	148.3
ii.	DETERGENT POWDER		1.66	M.Tons	41,821	41,507	100.8
iii.	TOILET SOAP		1.66	M.Tons	5,826	6,070	96.0
iv.	TOOTH PASTE		1.66	M.Tons	2,373	2,027	117.0
14.	<u>PETROLEUM PRODUCTS</u>	2	9.32				
i.	L.P.G		9.32	"000" Liters.	3,351	6,899	48.6
ii.	NAPHTHA SOLVENT		9.32	"000" Liters.	56,009	72,263	77.5
iii.	KEROSENE OIL		9.32	"000" Liters.	588	1,990	29.5
iv.	H.S.D		9.32	"000" Liters.	369,274	357,183	103.4
v.	FURNACE OIL		9.32	"000" Liters.	140,364	225,521	62.2
vi.	ASPHALT 80-100		9.32	"000" Liters.	590	69,528	0.8
vii.	ASPHALT 60-70		9.32	"000" Liters.	9,372	7,413	126.4
viii.	MOTOR SPRIT		9.32	"000" Liters.	59,576	44,447	134.0
ix.	JET FUEL		9.32	"000" Liters.	34,097	39,594	86.1
x.	LUBRICATING OIL		9.32	"000" Liters.	20,163	7,650	263.6
xi.	OTHERS		0.00	"000" Liters.	27,400	96,416	28.4
15.	<u>TYRES & TUBES</u>	4	0.41				
i.	MOTOR TYRE		0.41	Nos.	648,200	638,708	101.5
ii.	MOTOR TUBE		0.41	Nos.	67,843	162,595	41.7
16.	<u>CEMENT</u>	11	3.86				
i.	CEMENT		3.86	M.Tons	1,203,954	289,834	415.4
17.	<u>M.S.PRODUCTS</u>	28	4.88				
i.	M.S PRODUCTS		4.88	M.Tons	24,223	12,630	191.8
18.	<u>SAFETY RAZOR BLADE</u>	1	0.40				
i.	SAFETY RAZOR BLAD		0.04	"000" NOs.	198,885	214,360	92.8
19.	<u>SEWING MACHINES</u>	3	0.25				
i.	SEWING MACHINES		0.25	Nos.	4,220	9,280	45.5
20.	<u>ELEC. APPLIANCES</u>	3	2.21				
i.	REFRIGERATORS		0.11	Nos.	102,127	160,632	63.6
ii.	AIR-CONDITIONERS		0.60	Nos.	26,151	14,354	182.2
iii.	DEEP FREEZERS		0.50	Nos.	6,423	3,945	162.8
iv.	WASHING MACHINES		0.50	Nos.	76,885	59,984	128.2
v.	MICROWAVE OVEN		0.50	Nos.	90,046	95,747	94.0
21.	<u>AUTOMOBILE</u>	17	11.15				
i.	TRUCKS		2.71	Nos.	769	799	96.2
ii.	BUSES		0.77	Nos.	125	157	79.6
iii.	LCV'S		2.50	Nos.	3,708	5,494	67.5
iv.	MOTOR CYCLES		2.06	Nos.	532,362	331,812	160.4
v.	TRACTORS		0.25	Nos.	11,227	9,589	117.1
vi.	CARS		0.50	Nos.	27,574	36,198	76.2
vii.	VANS & JEEPS		1.18	Nos.	1,655	867	190.9
viii.	THREE WHEELERS		1.18	Nos.	14,845	8,459	175.5
	Grand Total	535	69.63				

Table 5: Employment in Selected Large-Scale Manufacturing Sector, September-2020 Vs August-2020

Sr. No.	Industrial Sector/ Items	No. of Industrial Units as per CMI 2005-06	Total Employees		Production Worker	
			Sep:2020	Aug:2020	Sep:2020	Aug:2020
1	<u>VEGETABLE GHEE</u>	35	2,679	2,679	1,245	1,245
2	<u>SUGAR</u>	26	5,622	5,714	5,018	5,197
3	<u>TEA</u>	7	3,120	3,134	2,665	2,679
4	<u>BEVERAGES</u>	13	3,204	3,113	1,231	1,152
5	<u>COTTON TEXTILE</u>	133	41,223	53,171	41,223	40,981
6	<u>LEATHER TANNING</u>	30	6,714	6,721	5,617	5,627
7	<u>PAPER & PAPER BOARD</u>	6	2,136	2,196	1,544	1,548
8	<u>PHARMACEUTICALS</u>	78	6,361	6,256	3,033	3,032
9	<u>ACID, ALKALIES & SALT</u>	3	18	18	13	13
10	<u>FERTILIZER</u>	3	981	984	818	821
11	<u>PAINTS & VARNISH</u>	9	106	106	50	50
12	<u>SOAP</u>	38	1,921	1,993	1,659	1,659
13	<u>PETROLEUM PRODUCTS</u>	2	429	437	331	338
14	<u>TYRES & TUBES</u>	4	5,672	5,652	4,060	4,020
15	<u>CEMENT</u>	11	5,203	5,201	2,328	2,328
16	<u>STEEL PRODUCTS</u>	1	-	-	-	-
17	<u>M.S PRODUCTS</u>	28	1,091	1,091	857	857
18	<u>SAFETY RAZOR BLAD</u>	1	266	288	244	246
19	<u>SEWING MACHINES</u>	3	410	410	354	354
20	<u>ELEC. APPLIANCES</u>	3	750	750	663	663
21	<u>AUTOMOBILE</u>	17	15,928	15,956	7,571	7,610
22	<u>STORAGE BATTERIES</u>	4	1,648	1,648	1,621	1,645
	Grand Total	455	105,481	117,518	82,144	82,063

Table 6: Employment in Selected Large-Scale Manufacturing Sector, September-2020 Vs September-2019

Sr. No.	Industrial Sector/ Items	No. of Industrial Units as per CMI 2005-06	Employees		Production Worker	
			Sep:2020	Sep:2019	Sep:2020	Sep:2019
1	<u>VEGETABLE GHEE</u>	35	2,679	2,217	1,245	1,634
2	<u>SUGAR</u>	26	5,622	8,096	5,018	4,886
3	<u>TEA</u>	7	3,120	3,124	2,665	2,616
4	<u>BEVERAGES</u>	13	3,204	2,656	1,231	760
5	<u>COTTON TEXTILE</u>	133	41,223	54,651	41,223	43,091
6	<u>LEATHER TANNING</u>	30	6,714	5,595	5,617	4,686
7	<u>PAPER & PAPER BOARD</u>	6	2,136	2,254	1,544	1,652
8	<u>PHARMACEUTICALS</u>	78	6,361	6,145	3,033	3,683
9	<u>ACID, ALKALIES & SALT</u>	3	18	34	13	22
10	<u>FERTILIZER</u>	3	981	966	818	801
11	<u>PAINTS & VARNISH</u>	9	106	106	50	57
12	<u>SOAP</u>	38	1,921	2,750	1,659	2,417
13	<u>PETROLEUM PRODUCTS</u>	2	429	434	331	342
14	<u>TYRES & TUBES</u>	4	5,672	5,888	4,060	4,140
15	<u>CEMENT</u>	11	5,203	4,436	2,328	1,890
16	<u>STEEL PRODUCTS</u>	1	-	9,474	-	6,394
17	<u>M.S PRODUCTS</u>	28	1,091	827	857	670
18	<u>SAFETY RAZOR BLAD</u>	1	266	288	244	255
19	<u>SEWING MACHINES</u>	3	410	416	354	360
20	<u>ELECTRICAL APPARATUS</u>	3	750	750	663	663
21	<u>AUTOMOBILE</u>	17	15,928	15,095	7,571	6,912
22	<u>STORAGE BATTERIES</u>	4	1,648	2,137	1,621	1,633
	Grand Total	455	105,481	128,339	82,144	89,563

*Table 7: Average Monthly Employment in Selected Large Scale Manufacturing Sector,
2020-21 (Jul to Sep) Vs 2019-20 (Jul to Sep)*

Sr. No.	Industrial Sector/ Items	No. of Industrial Units as per CMI 2005-06	Average Monthly Total Employment		Average Monthly Production Worker	
			(Jul-Sep) 2020-21	(Jul-Sep) 2019-20	(Jul-Sep) 2020-21	(Jul-Sep) 2019-20
1	<u>VEGETABLE GHEE</u>	35	2,694	2,212	1,259	1,637
2	<u>SUGAR</u>	26	5,637	8,313	5,139	4,870
3	<u>TEA</u>	7	3,115	3,075	2,659	1,766
4	<u>BEVERAGES</u>	13	3,146	2,618	1,139	1,158
5	<u>COTTON TEXTILE</u>	133	49,227	54,651	41,107	42,883
6	<u>LEATHER TANNING</u>	30	6,738	5,627	5,638	4,715
7	<u>PAPER & PAPER BOARD</u>	6	2,158	2,257	1,539	1,647
8	<u>PHARMACEUTICALS</u>	78	6,293	6,209	3,033	3,018
9	<u>ACID, ALKALIES & SALT</u>	3	18	34	13	22
10	<u>FERTILIZER</u>	3	984	965	813	799
11	<u>PAINTS & VARNISH</u>	9	106	106	52	57
12	<u>SOAP</u>	38	1,993	2,750	1,679	2,417
13	<u>PETROLEUM PRODUCTS</u>	2	434	435	335	343
14	<u>TYRES & TUBES</u>	4	5,668	5,951	4,040	4,172
15	<u>CEMENT</u>	11	5,205	4,862	2,329	2,018
16	<u>STEEL PRODUCTS</u>	1	-	9,418	-	6,413
17	<u>M.S PRODUCTS</u>	28	1,076	827	831	670
18	<u>SAFETY RAZOR BLAD</u>	1	281	288	246	256
19	<u>SEWING MACHINES</u>	3	410	416	354	360
20	<u>ELECTRICAL APPARATUS</u>	3	750	750	663	663
21	<u>AUTOMOBILE</u>	17	15,947	15,095	7,597	6,912
22	<u>STORAGE BATTERIES</u>	4	1,721	2,137	1,637	1,665
	Grand Total	455	113,600	128,995	82,101	88,461

Annexure – A Proforma/ Questionnaire



**GOVERNMENT OF SINDH
PLANNING & DEVELOPMENT DEPARTMENT
BUREAU OF STATISTICS**

www.sindhbos.gov.pk

Street-13, Block-8, Kehkashan Clifton, Karachi-75600, P.O.Box# 3879

021-99251259
 021-35296415
 m.kazimjafri@hotmail.com

The information supplied will be kept strictly confidential and will be used for statistical purpose only.	REPORT FOR	
	MONTH	YEAR

MONTHLY SURVEY OF INDUSTRIAL PRODUCTION AND EMPLOYMENT IN SINDH.

INDUSTRY CODE

--	--	--	--	--

Estb: Code

--	--	--	--

LOCATION CODE

--	--

PART-I GENERAL PARTICULARS

- i) Name and Address of the Establishment _____
- ii) Name, Designation, Telephone, Cell and _____
- Fax# of the person to be contacted. _____
- iii) Website and E-mail Address _____

PART-II PRODUCTION DATA

S.No	Major Items of Production	Code	Unit of Quantity	Code	Previous Month	Current Month	Reasons of Growth/ Decline

PART-III WORKING DAYS AND EMPLOYMENT

- i) No. of days establishment worked _____
- ii) No. of Production workers. Male _____ Female _____ Total _____
- iii) No. of Non production workers Male _____ Female _____ Total _____
- TOTAL (ii + iii)** Male _____ Female _____ Total _____

Note: Production Workers mean those who are directly associated with production. It includes those engaged in manufacturing, assembling packing repairing etc. Working Supervisor should also be included, Non production worker mean those who are not directly associated with production it includes Administrative Clerical and Services Staff like Chowkidar, Driver and Sweeper.

Signature _____
 Designation _____
 Date _____

Annexure – B Important Definitions

Large Scale Manufacturing Industries

Establishments where 10 or more employees are working are called large Scale Manufacturing Industries.

Employees

Employees mean all persons whether part time or full time who work in the establishments and receive remuneration in cash or in kind. Working proprietors, unpaid family workers and home workers are excluded from the category of employee. There are two types of employees Production Workers and Non-Production Workers.

- **Production Workers**

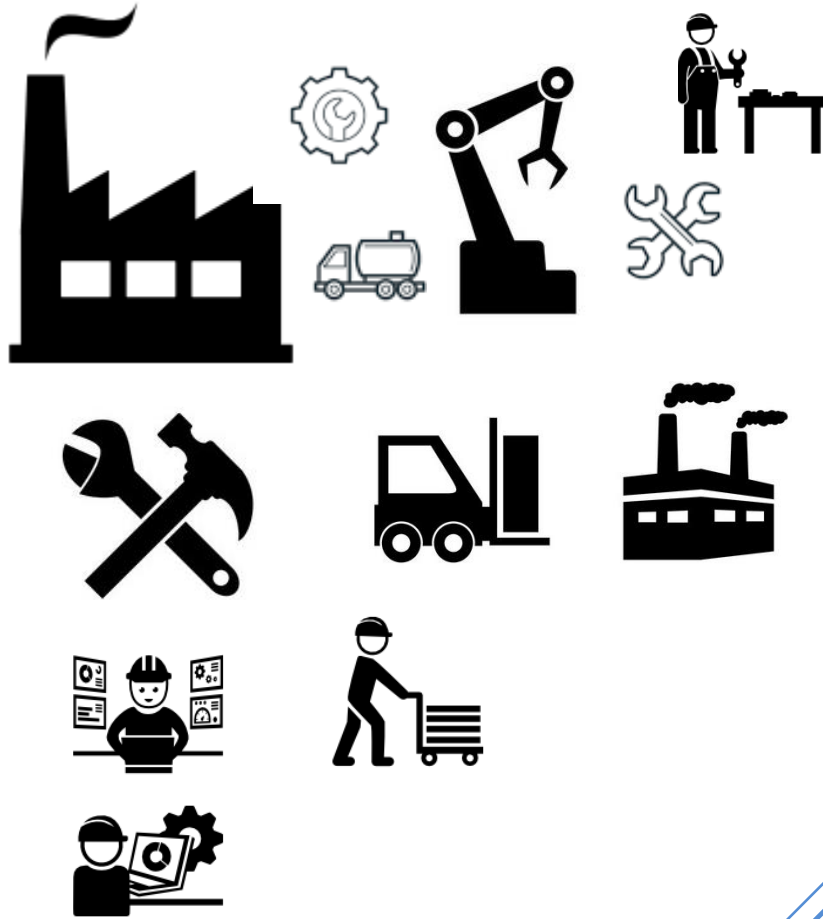
Are engaged in work directly associated with production like manufacturing, assembling, packing, repairing etc. Working supervisors and persons engaged for repairs and maintenance are also included.

- **Non-Production Workers**

Include administrative and professional employees, white-collar office employees, drivers, watchmen/guards, peons, sweepers, office boys, etc.

Annexure – C Data Users

- Ministry of Industries & Production, Government of Pakistan.
- Planning & Development Department, Government of Sindh.
- Pakistan Bureau of Statistics, Government of Pakistan.
- State Bank of Pakistan.
- Provincial Bureaus of Statistics, Punjab, KPK and Baluchistan.
- Research & Training Wing, Planning & Development Department, Government of Sindh.



(Industries Section)
Bureau of Statistics
Planning & Development
Department
Government of Sindh
m.kazimjafri@hotmail.com

ST:13 Block-8 Kehkashan Clifton, Ch. Kahliqz-zaman road, Karachi
Ph. 021-99251259, Email: ddindustries.sindhbos@gmail.com
www.sindhbos.gov.pk