

MONTHLY SURVEY OF INDUSTRIAL PRODUCTION & EMPLOYMENT IN SINDH



**December,
2021**

Industries Section, BOS



**BUREAU OF STATISTICS
PLANNING & DEVELOPMENT DEPARTMENT
GOVERNMENT OF SINDH**



**Sindh Monthly
Survey of
Industrial
Production &
Employment
(MIPE)
December,
2021**

**Bureau of Statistics
Planning & Development Department
Government of Sindh**

**www.sindhbos.gov.pk
ddindustries.sindhbos@gmail.com**

ST:13 Block-8 Kehkashan Clifton, Ch. Kahliquz-zaman road, Karachi
Ph. 021-99251259

Preface

Monthly Survey of Industrial Production and Employment (MIPE) is being conducted/ published by Sindh Bureau of Statistics on regular basis. This report provides important statistics in respect of industrial production & employment of large Scale Manufacturing (LSM) industries in Sindh.

This report contains information on 61 items manufactured in 22 selected large scale industrial sectors covering 537 industrial establishments (selection on the basis of CMI 2005-06). These industries account for 70.43% of total value added of large scale manufacturing sector in Sindh.

MIPE Report provides information regarding General Index and Quantum Index of Manufacturing (QIM) to base period 2005-06, and analytical analysis on the current status of production and employment in manufacturing sector.

All the efforts are made to improve the industrial statistics and hope this report would prove useful to policy makers, planners, researchers and other data users. Suggestion/ recommendations from the users will always be welcomed and appreciated.

Dr. Ishaque Ahmed Ansari
Director General
Bureau of Statistics
Planning & Development Department
Government of Sindh

Table of Contents

LIST OF TABLES	III
LIST OF FIGURES.....	III
LIST OF EQUATIONS	III
MIPE TEAM (INDUSTRIES SECTION)	IV
1. INTRODUCTION	1
1.1. QUESTIONNAIRE/ PROFORMA	2
1.2. METHODOLOGY.....	2
1.3. EDITING.....	2
2. QUANTUM INDEX OF MANUFACTURING (QIM).....	3
REPORT ANALYSIS.....	4
ANNEXURE – A PROFORMA/ QUESTIONNAIRE	15
ANNEXURE – B IMPORTANT DEFINITIONS	16
ANNEXURE – C DATA USERS	17

List of Tables

TABLE 1: SERIES OF QUANTUM INDEX OF MANUFACTURING (QIM) AT (2005-06=100) _____	4
TABLE 2: PRODUCTION OF SELECTED ITEMS PERTAINING TO LARGE-SCALE MANUFACTURING SECTOR, DECEMBER-2021 Vs NOVEMBER-2021 _____	6
TABLE 3: PRODUCTION OF SELECTED ITEMS PERTAINING TO LARGE-SCALE MANUFACTURING SECTOR, DECEMBER-2021 Vs DECEMBER -2020 _____	8
TABLE 4: PRODUCTION OF SELECTED ITEMS PERTAINING TO LARGE-SCALE MANUFACTURING SECTOR, _____	10
TABLE 5: EMPLOYMENT IN SELECTED LARGE-SCALE MANUFACTURING SECTOR, DECEMBER-2021 Vs NOVEMBER-2021 _____	12
TABLE 6: EMPLOYMENT IN SELECTED LARGE-SCALE MANUFACTURING SECTOR, DECEMBER-2021 Vs DECEMBER-2020 _____	13
TABLE 7: AVERAGE MONTHLY EMPLOYMENT IN SELECTED LARGE SCALE MANUFACTURING SECTOR, _____	14

List of Figures

FIGURE 1: TREND OF QUANTUM INDEX OF LARGE SCALE MANUFACTURING INDUSTRIES AT BASE YEAR 2005-06 _____	5
FIGURE 2: TREND OF AVERAGE MONTHLY EMPLOYMENT IN LARGE SCALE MANUFACTURING INDUSTRIES _____	5

List of Equations

EQUATION 1 LASPAYER'S INDEX _____	3
-----------------------------------	---

MIPE Team (Industries Section)

Team Lead:

Muhammad Kazim Jafri

Deputy Director

Team Members:

Ms. Rukhsana Aziz

Statistical Officer

Support in Data Collection and Compilation:

1. **Mr. Syed Younus Bukhari**

Jr. Stenographer

2. **Mr. Muhammad Akram Bhatti**

Statistical Computer

1. Introduction

A robust manufacturing sector promotes domestic production, exports and generates employment, hence stimulates the overall growth of an economy. In Pakistan, manufacturing sector contributes 12.79% to Gross Domestic Product (GDP) at 9.73 percent of GDP dominates the overall manufacturing sector and the sector employs 16.1 % of the country's labor force.

Industrial Statistics is very essential tool to track industrial growth and implementation of policies in right directions. This sector has great importance for economic development of country. As per the composition of Pakistan's economy in 2020-21, Agriculture Sector is 19.2%, Industries Sector is 19.1% and Services Sector is 61.7%.

Manufacturing sector consists of three sub-sectors: Large Scale Manufacturing (LSM), Small Scale Manufacturing (SSM) and Slaughtering. According to the Pakistan Bureau of Statistics, Industrial sector performance is more dependent on Large-Scale Manufacturing (LSM) as it holds 51% share in Industry whereas LSM is reflected by Quantum Index of Manufacturing (QIM) data. Quantum Index of Manufacturing (QIM) is a measure of LSM performance with 70.33 weight in overall LSM and derived from the Census of Manufacturing Industries (CMI) 2005-06.

The role of Sindh province in the Large Scale Manufacturing is very vital. However, Sindh QIM's trend of overall manufacturing index has random behavior with ups and downs; which main cause in last year is COVID-19 and recession in economy. As the Karachi is the largest metropolitan city of Pakistan, according to Karachi Chamber of Commerce and Industry (KCCI) it produces 15% with an annual Gross Domestic Product (GDP). Sindh Business Register (SBR), 2017 established by Sindh Bureau of Statistics, Planning & Development Department during the field operation CMI 2015-16 started from January, 2017 shows that 67% establishments/ factories are located in Karachi Division and remaining 33% are located in other districts of Sindh.

For the timely and quality industrial statistics, Sindh Bureau of Statistics, Planning & Development Department has been conducting Monthly Survey of Industrial Production and Employment (MIPE). This survey report includes 61 items manufactured in 22 large scale Industrial sectors from 537 establishments/ factories in Sindh. The sample of 537 firms was drawn from the last Census of Manufacturing Industries (CMI), 2005-06 and these

industries account for 70.43% of total value added in terms of production during 2005-06.

1.1. Questionnaire/ Proforma

A questionnaire/ Proforma is a research instrument consisting of a series of questions and other prompts for the purpose of gathering information from resp

ondents. A pre-tested questionnaire is used for the data collection of industrial inputs related to employment and production, attached at Annex-A.

1.2. Methodology

The basic method of data collection for Sindh MIPE is the posting/ mailing of MIPE Questionnaires. More than 70% monthly returns are received to this Bureau through mail from industrial units. The non-responding or remaining establishments are visited by the officers/ officials of this Bureau, besides this the method of emailing, fax and telephonic approach are also used for collection of monthly returns and increase the response rate.

1.3. Editing

All the received returns are scrutinized for accuracy and consistency with previous data by the Industries Section of this Bureau. As per *Unit Calculation Sheet* different units of similar products are converted into the reporting units. In case of huge discrepancy between current and previous returns the factory management is approached to rectify that figures. In the absence establishment's return or non-availability of concerned person the average production of last month or the last month information is repeated for equivalence.

2. Quantum Index of Manufacturing (QIM)

A quantum index is an index based on quantity units of goods such as number or weight. Sindh bureau of Statistics is computing Index on Industrial Production using 2005-06 as base year. Index Series is generated by using Laspayer's Index.

$$QIM = \frac{\sum_{i=1}^n \frac{q_{im}}{q_{i0}} w_i}{\sum_{i=1}^n w_i} \times 100$$

Equation 1 Laspayer's Index

q_{im} = Production of i^{th} item during the current month

q_{i0} = Average Production of the same i^{th} item in the base period (2005-06)

w_i = Weight of the i^{th} item in the base period (2005-06)

$\sum_{i=1}^n w_i$ = Total Weight of 22 large scale industrial sectors covering 537 establishments in the base period with respect to the total value added of all the industries covered in CMI in the base year 2005-06.

Report Analysis

Summary findings on the basis of Index of Industrial Production are as follows:

- Overall Production in December, 2021 is decreased by 4.58% as compared to last month of November, 2021.
- Production in manufacturing sector for the month of December, 2021 has a gigantic positive jump of 18.98% as compared to corresponding month of last year. The plausible reason for this huge increase is the less production during COVID in 2020.
- Cumulative production from July to December (2021-22) is significantly increased by 31.1% than the cumulative production of July-December (2020-21) which also reflects the less production during COVID period in 2020.
- Large Scale Manufacturing employment during December, 2021 increased 2.8% as compared to previous month.
- Employment during December, 2021 is 15.2% higher than December, 2020.
- Average monthly employment during the period of July-December (2021-22) is 16.6% higher as compared to the corresponding period of July-December (2020-21).

Table 1: Series of Quantum Index of Manufacturing (QIM) at (2005-06=100)

Month/ Year	2016-17	2017-18	2018-19	2019-20	2020-21	2021-22
July	284.0	327.0	290.8	259.7	294.2	346.3
August	287.7	336.4	265.5	220.9	238.5	368.7
September	281.5	330.9	311.3	266.7	295.4	387.1
October	291.4	355.7	287.0	277.0	315.6	400.5
November	317.1	343.2	273.3	280.3	320.5	434.6
December	302.8	341.5	265.2	223.7	350.6	406.5
January	286.1	374.0	321.3	263.8	347.2	
February	283.3	324.5	309.0	313.2	336.1	
March	275.6	341.4	279.7	258.2	337.1	
April	276.8	338.5	258.2	172.1	308.9	
May	283.9	311.3	248.2	199.8	282.5	
June	258.1	307.4	257.6	324.9	341.9	
Average (Geometric Mean)	285.4	335.5	279.7	251.3	312.4	

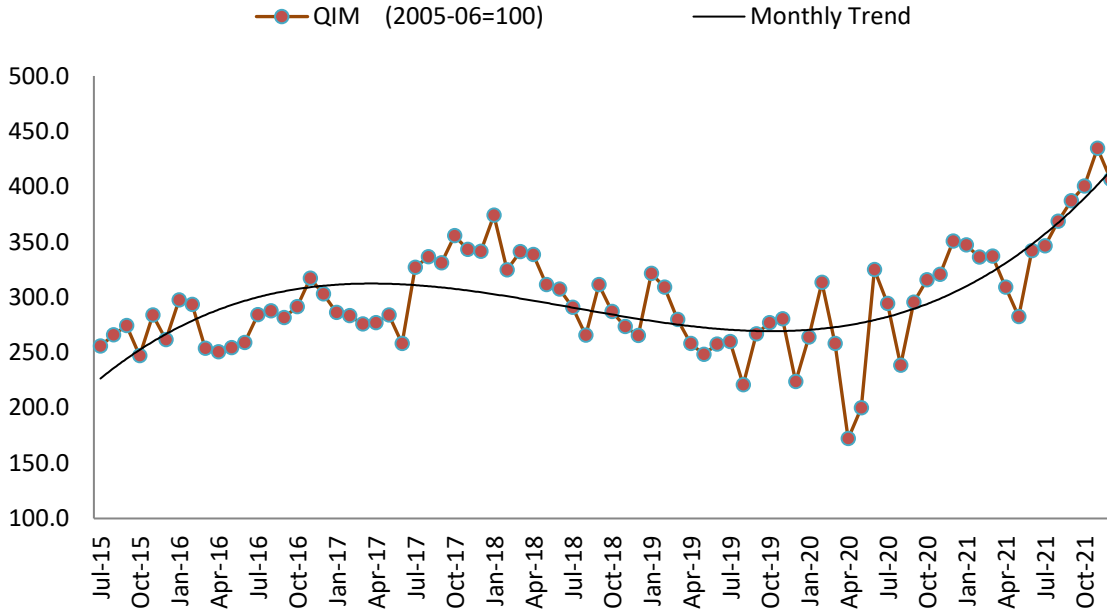


Figure 1: Trend of Quantum Index of Large Scale Manufacturing Industries at base year 2005-06

QIM index in last six months of current financial year 2020-21 is showing an increasing trend. Similarly in month to month change last month growth reported significantly high around 3.8% which major cause was the increase in production seasonal item sugar and few automobile items.

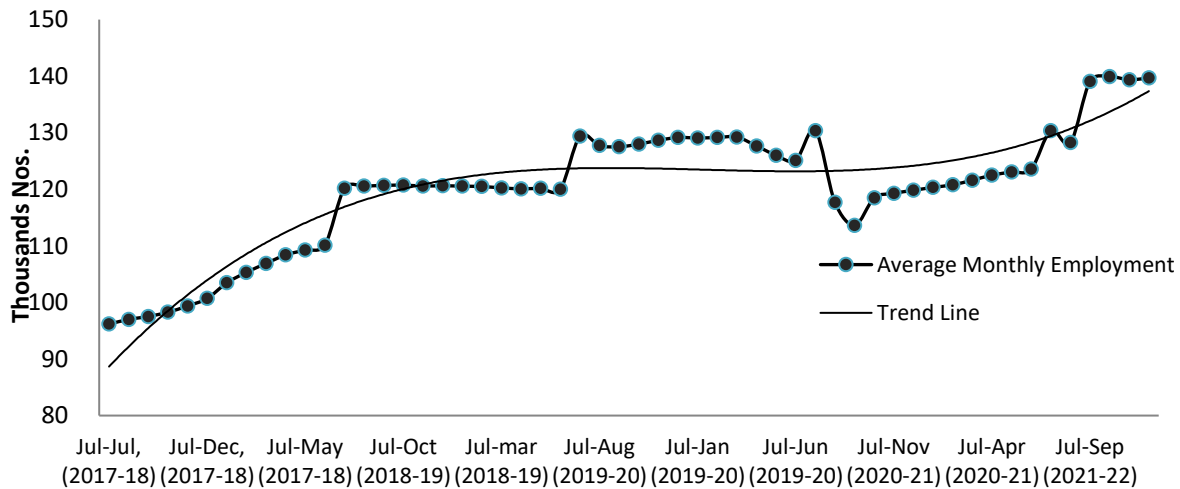


Figure 2: Trend of Average Monthly Employment in Large Scale Manufacturing Industries

Overall employment trend in last financial year 2020-21 is looking upward. In current month the employment increased by 2.9% as compared to last month and the major chunk of employment was increased in Paint & Varnish and Soap manufacturing sectors.

Table 2: Production of Selected Items Pertaining to Large-Scale Manufacturing Sector, December-2021 Vs November-2021

Sr. No.	Industrial Sector/ Items	No. of Industrial Units as per CMI 2005-06	WEIGHT (2005-06)	Unit of Quantity	Production		Index of Production in Dec:2021 with Nov: 2021
					Dec:2021	Nov:2021	
1.	<u>VEGETABLE GHEE</u>	35	1.61				
i.	VEGETABLE GHEE		1.11	M.Tons	19,209	18,294	105.0
ii.	COOKING OIL		0.50	M.Tons	34,601	35,426	97.7
2.	<u>SUGAR</u>	26	4.32				
i.	SUGAR		4.32	M.Tons	339,024	108,746	311.8
3.	<u>TEA</u>	7	1.23				
i.	TEA		1.23	M.Tons	4,397	4,730	93.0
4.	<u>BEVERAGES</u>	13	0.85				
i.	BEVERAGES		0.85	"000" NOs.	42,866	63,666	67.3
ii.	WATER		0.85	"000" NOs.	19,741	19,694	100.2
5.	<u>COTTON TEXTILE</u>	133	13.65				
i.	COTTON YARN		9.10	M.Tons	32,987	26,987	122.2
ii.	COTTON FABRICS		4.13	"000" Sq. M	40,279	37,616	107.1
iii.	M.M.YARN		0.42	M.Tons	5,789	3,438	168.4
6.	<u>LEATHER TANNING</u>	30	0.07				
i.	UPPER LEATHER		0.07	"000" Sq. M.	605	374	161.8
7.	<u>COTTON GINNING & PRESSING</u>	85	3.30				
i.	C.G.& PRESSING		3.30	Bales	1,674,243	1,821,268	91.9
8.	<u>PAPER & PAPER BOARD</u>	6	0.01				
i.	PRINTING PAPER		0.01	M.Tons	441	309	142.7
ii.	WRITTEN PAPER		0.01	M.Tons	407	370	110.0
iii.	PACKING & OTHER PAPER		0.01	M.Tons	3,310	2,010	164.7
iv.	ADVERTISING MATERIAL		0.01	M.Tons	243	272	89.3
9.	<u>PHARMACEUTICALS</u>	78	6.37				
i.	TABLETS		1.67	"000" NOs.	1,222,127	1,357,986	90.0
ii.	LIQUIDS/SYRUPS		1.97	"000" Liters.	12,617	9,760	129.3
iii.	CAPSULES		1.36	"000" NOs.	184,924	62,123	297.7
iv.	INJECTIONS		1.22	"000" NOs.	60,371	194,657	31.0
v.	OINTMENT		0.15	KGs.	207,396	218,312	95.0
10.	<u>ACID, ALKALIES & SALT</u>	3	0.04				
i.	SULPHURIC ACID		0.04	M.Tons	3,302	3,145	105.0
11.	<u>FERTILIZER</u>	3	3.50				
i.	UREA		3.50	M.Tons	330,638	346,022	95.6
ii.	AMONIA		3.50	M.Tons	75,955	74,444	102.0
iii.	DAP		3.50	M.Tons	52,689	61,580	85.6
12.	<u>PAINTS & VARNISH</u>	9	0.32				
i.	PAINTS		0.32	M.Tons	238	238	100.1
ii.	VARNISH		0.32	"000" Liters.	30	20	150.0
13.	<u>SOAP</u>	38	1.66				
i.	WASHING SOAP		1.66	M.Tons	17,412	16,593	104.9
ii.	DETERGENT POWDER		1.66	M.Tons	4,698	14,078	33.4
iii.	TOILET SOAP		1.66	M.Tons	14,782	5,864	252.1
14.	<u>PETROLEUM PRODUCTS</u>	2	9.32				
i.	L.P.G		9.32	"000" Liters.	3,441	3,623	95.0
ii.	NAPHTHA SOLVENT		9.32	"000" Liters.	44,286	46,617	95.0
iii.	KEROSENE OIL		9.32	"000" Liters.	-	806	0.0
iv.	H.S.D		9.32	"000" Liters.	73,357	150,520	48.7
v.	FURNACE OIL		9.32	"000" Liters.	34,357	69,030	49.8
vi.	ASPHALT 80-100		9.32	"000" Liters.	9,285	9,285	100.0
vii.	ASPHALT 60-70		9.32	"000" Liters.	9,285	9,285	100.0
viii.	MOTOR SPRIT		9.32	"000" Liters.	10,758	21,378	50.3
ix.	JET FUEL		9.32	"000" Liters.	16,962	22,204	76.4
x.	LUBRICATING OIL		9.32	"000" Liters.	25,341	26,675	95.0
xi.	OTHERS		0.00	"000" Liters.	46,324	48,762	95.0
15.	<u>TYRES & TUBES</u>	4	0.41				
i.	MOTOR TYRE		0.41	Nos.	182,214	272,136	67.0
ii.	MOTOR TUBE		0.41	Nos.	6,651	2,834	234.7
16.	<u>CEMENT</u>	11	3.86				
i.	CEMENT		3.86	M.Tons	677,269	753,188	89.9

Sr. No.	Industrial Sector/ Items	No. of Industrial Units as per CMI 2005-06	WEIGHT (2005-06)	Unit of Quantity	Production		Index of Production in Dec:2021 with Nov: 2021
					Dec:2021	Nov:2021	
17.	<u>M.S.PRODUCTS</u>	28	4.88				
i.	M.S PRODUCTS		4.88	M.Tons	15,966	15,113	105.6
18.	<u>STEEL PRODUCTS</u>	2	1.02				
i.	STEEL PRODUCTS		1.02	M.Tons	2,577	2,758	93.4
19.	<u>SAFETY RAZOR BLADE</u>	1	0.40				
i.	SAFETY RAZOR BLAD		0.04	"000" NOs.	53,874	63,217	85.2
20.	<u>SEWING MACHINES</u>	3	0.25				
i.	SEWING MACHINES		0.25	Nos.	1,200	1,390	86.3
21.	<u>ELEC. APPLIANCES</u>	3	2.21				
i.	REFRIGERATORS		0.11	Nos.	31,888	76,283	41.8
ii.	AIR-CONDITIONERS		0.60	Nos.	11,664	12,278	95.0
iii.	DEEP FREEZERS		0.50	Nos.	307	2,802	11.0
iv.	WASHING MACHINES		0.50	Nos.	38,103	39,911	95.5
v.	MICROWAVE OVEN		0.50	Nos.	43,405	45,440	95.5
22.	<u>AUTOMOBILE</u>	17	11.15				
i.	TRUCKS		2.71	Nos.	432	399	108.3
ii.	BUSES		0.77	Nos.	52	44	118.2
iii.	LCV'S		2.50	Nos.	1,932	2,490	77.6
iv.	MOTOR CYCLES		2.06	Nos.	140,283	163,053	86.0
v.	TRACTORS		0.25	Nos.	4,911	4,607	106.6
vi.	CARS		0.50	Nos.	22,168	16,629	133.3
vii.	VANS & JEEPS		1.18	Nos.	1,489	1,022	145.7
viii.	THREE WHEELERS		1.18	Nos.	3,392	3,643	93.1
Grand Total		537	70.43				

Table 3: Production of Selected Items Pertaining to Large-Scale Manufacturing Sector, December-2021 Vs December -2020

Sr. No.	Industrial Sector/ Items	No. of Industrial Units as per CMI 2005-06	WEIGHT (2005-06)	Unit of Quantity	Production		Index of Production in Dec:2021 with Dec:2020
					Dec:2021	Dec:2020	
1.	<u>VEGETABLE GHEE</u>	35	1.61				
i.	VEGETABLE GHEE		1.11	M.Tons	19,209	32,377	59.3
ii.	COOKING OIL		0.50	M.Tons	34,601	14,053	246.2
2.	<u>SUGAR</u>	26	4.32				
i.	SUGAR		4.32	M.Tons	339,024	302,705	112.0
3.	<u>TEA</u>	7	1.23				
i.	TEA		1.23	M.Tons	4,397	5,681	77.4
4.	<u>BEVERAGES</u>	13	0.85				
i.	BEVERAGES		0.85	"000" NOs.	42,866	76,800	55.8
ii.	WATER		0.85	"000" NOs.	19,741	14,506	136.1
5.	<u>COTTON TEXTILE</u>	133	13.65				
i.	COTTON YARN		9.10	M.Tons	32,987	20,681	159.5
ii.	COTTON FABRICS		4.13	"000" Sq. M	40,279	19,569	205.8
iii.	M.M.YARN		0.42	M.Tons	5,789	1,787	323.9
6.	<u>LEATHER TANNING</u>	30	0.07				
i.	UPPER LEATHER		0.07	"000" Sq. M.	605	794	76.2
7.	<u>COTTON GINNING & PRESSING</u>	85	3.30				
i.	C.G.& PRESSING		3.30	Bales	1,674,243	996,511	168.0
8.	<u>PAPER & PAPER BOARD</u>	6	0.01				
i.	PRINTING PAPER		0.01	M.Tons	441	160	275.6
ii.	WRITTEN PAPER		0.01	M.Tons	407	102	399.0
iii.	PACKING & OTHER PAPER		0.01	M.Tons	3,310	1,716	192.9
iv.	ADVERTISING MATERIAL		0.01	M.Tons	243	24	1012.5
9.	<u>PHARMACEUTICALS</u>	78	6.37				
i.	TABLETS		1.67	"000" NOs.	1,222,127	1,985,124	61.6
ii.	LIQUIDS/SYRUPS		1.97	"000" Liters.	12,617	9,231	136.7
iii.	CAPSULS		1.36	"000" NOs.	184,924	362,998	50.9
iv.	INJECTIONS		1.22	"000" NOs.	60,371	129,217	46.7
v.	OINTMENT		0.15	KGs.	207,396	208,593	99.4
10.	<u>ACID, ALKALIES & SALT</u>	3	0.04				
i.	SULPHURIC ACID		0.04	M.Tons	3,302	2,354	140.3
11.	<u>FERTILIZER</u>	3	3.50				
i.	UREA		3.50	M.Tons	330,638	236,984	139.5
ii.	AMONIA		3.50	M.Tons	75,955	44,871	169.3
iii.	DAP*		3.50	M.Tons	52,689	72,751	72.4
12.	<u>PAINTS & VARNISH</u>	9	0.32				
i.	PAINTS		0.32	M.Tons	238	92	258.7
ii.	VARNISH		0.32	"000" Liters.	30	342	8.8
13.	<u>SOAP</u>	38	1.66				
i.	WASHING SOAP		1.66	M.Tons	17,412	7,126	244.4
ii.	DETERGENT POWDER		1.66	M.Tons	4,698	15,289	30.7
iii.	TOILET SOAP		1.66	M.Tons	14,782	1,770	835.1
14.	<u>PETROLEUM PRODUCTS</u>	2	9.32				
i.	L.P.G		9.32	"000" Liters.	3,441	2,728	126.1
ii.	NAPHTHA SOLVENT		9.32	"000" Liters.	44,286	16,825	263.2
iii.	KEROSENE OIL		9.32	"000" Liters.	-	-	
iv.	H.S.D		9.32	"000" Liters.	73,357	122,883	59.7
v.	FURNACE OIL		9.32	"000" Liters.	34,357	53,658	64.0
vi.	ASPHALT 80-100		9.32	"000" Liters.	-	339	
vii.	ASPHALT 60-70		9.32	"000" Liters.	9,285	7,344	126.4
viii.	MOTOR SPRIT		9.32	"000" Liters.	10,758	23,577	45.6
ix.	JET FUEL		9.32	"000" Liters.	16,962	11,143	152.2
x.	LUBRICATING OIL		9.32	"000" Liters.	25,341	19,363	130.9
xi.	OTHERS		0.00	"000" Liters.	46,324	33,400	138.7
15.	<u>TYRES & TUBES</u>	4	0.41				
i.	MOTOR TYRE		0.41	Nos.	182,214	242,174	75.2
ii.	MOTOR TUBE		0.41	Nos.	6,651	39,415	16.9
16.	<u>CEMENT</u>	11	3.86				
i.	CEMENT		3.86	M.Tons	677,269	515,499	131.4

Sr. No.	Industrial Sector/ Items	No. of Industrial Units as per CMI 2005-06	WEIGHT (2005-06)	Unit of Quantity	Production		Index of Production in Dec:2021 with Dec:2020
					Dec:2021	Dec:2020	
17.	<u>M.S.PRODUCTS</u>	28	4.88				
i.	M.S PRODUCTS		4.88	M.Tons	15,966	3,659	436.3
18.	<u>STEEL PRODUCTS</u>	2	1.02				
i.	STEEL PRODUCTS		1.02	M.Tons	2,577	2,545	101.3
19.	<u>SAFETY RAZOR BLADE</u>	1	0.40				
i.	SAFETY RAZOR BLAD		0.04	"000" NOs.	53,874	75,352	71.5
20.	<u>SEWING MACHINES</u>	3	0.25				
i.	SEWING MACHINES		0.25	Nos.	1,200	1,450	82.8
21.	<u>ELEC. APPLIANCES</u>	3	2.21				
i.	REFRIGERATORS		0.11	Nos.	31,888	52,145	61.2
ii.	AIR-CONDITIONERS		0.60	Nos.	11,664	6,790	171.8
iii.	DEEP FREEZERS		0.50	Nos.	307	253	121.3
iv.	WASHING MACHINES		0.50	Nos.	38,103	34,092	111.8
v.	MICROWAVE OVEN		0.50	Nos.	43,405	47,353	91.7
22.	<u>AUTOMOBILE</u>	17	11.15				
i.	TRUCKS		2.71	Nos.	432	231	187.0
ii.	BUSES		0.77	Nos.	52	48	108.3
iii.	LCV'S		2.50	Nos.	1,932	1,841	104.9
iv.	MOTOR CYCLES		2.06	Nos.	140,283	154,333	90.9
v.	TRACTORS		0.25	Nos.	4,911	4,196	177.0
vi.	CARS		0.50	Nos.	22,168	11,514	192.5
vii.	VANS & JEEPS		1.18	Nos.	1,489	855	174.2
viii.	THREE WHEELERS		1.18	Nos.	3,392	4,532	74.8
	Grand Total	537	70.43				

**Table 4: Production of Selected Items Pertaining to Large-Scale Manufacturing Sector,
2021-22 (Jul to Dec) Vs 2020 (Jul to Dec)**

Sr. No.	Industrial Sector/ Items	No. of Industrial Units as per CMI 2005-06	WEIGHT (2005-06)	Unit of Quantity	Production		Index of Production in 2021-22 (Jul-Dec) with 2020-21 (Jul-Dec)
					2021-22 (Jul-Dec)	2020-21 (Jul-Dec)	
1.	<u>VEGETABLE GHEE</u>	35	1.61				
i.	VEGETABLE GHEE		1.11	M.Tons	154,209	207,739	74.2
ii.	COOKING OIL		0.50	M.Tons	144,964	89,128	162.6
2.	<u>SUGAR</u>	26	4.32				
i.	SUGAR		4.32	M.Tons	447,770	397,851	112.5
3.	<u>TEA</u>	7	1.23				
i.	TEA		1.23	M.Tons	30,524	26,507	115.2
4.	<u>BEVERAGES</u>	13	0.85				
i.	BEVERAGES		0.85	"000" NOs.	404,334	566,795	71.3
ii.	WATER		0.85	"000" NOs.	131,837	103,557	127.3
5.	<u>COTTON TEXTILE</u>	133	13.65				
i.	COTTON YARN		9.10	M.Tons	142,271	116,153	122.5
ii.	COTTON FABRICS		4.13	"000" Sq. M	165,255	105,855	156.1
iii.	M.M.YARN		0.42	M.Tons	21,332	6,158	346.4
6.	<u>LEATHER TANNING</u>	30	0.07				
i.	UPPER LEATHER		0.07	"000" Sq. M.	2,929	4,205	69.7
7.	<u>COTTON GINNING & PRESSING</u>	85	3.30				
i.	C.G.& PRESSING		3.30	Bales	6,077,960	3,289,449	184.8
8.	<u>PAPER & PAPER BOARD</u>	6	0.01				
i.	PRINTING PAPER		0.01	M.Tons	2,134	1,703	125.3
ii.	WRITTEN PAPER		0.01	M.Tons	2,332	1,451	160.7
iii.	PACKING & OTHER PAPER		0.01	M.Tons	12,550	9,937	126.3
iv.	ADVERTISING MATERIAL		0.01	M.Tons	515	145	355.2
9.	<u>PHARMACEUTICALS</u>	78	6.37				
i.	TABLETS		1.67	"000" NOs.	8,185,675	11,957,677	68.5
ii.	LIQUIDS/SYRUPS		1.97	"000" Liters.	73,820	44,508	165.9
iii.	CAPSULES		1.36	"000" NOs.	1,094,039	2,046,224	53.5
iv.	INJECTIONS		1.22	"000" NOs.	555,415	723,501	76.8
v.	OINTMENT		0.15	KGs.	1,221,764	1,216,270	100.5
10.	<u>ACID, ALKALIES & SALT</u>	3	0.04				
i.	SULPHURIC ACID		0.04	M.Tons	17,641	13,848	127.4
11.	<u>FERTILIZER</u>	3	3.50				
i.	UREA		3.50	M.Tons	1,962,475	1,421,640	138.0
ii.	AMONIA		3.50	M.Tons	417,505	270,307	154.5
iii.	DAP		3.50	M.Tons	560,387	446,066	125.6
12.	<u>PAINTS & VARNISH</u>	9	0.32				
i.	PAINTS		0.32	M.Tons	1,434	435	329.6
ii.	VARNISH		0.32	"000" Liters.	71	1,478	4.8
13.	<u>SOAP</u>	38	1.66				
i.	WASHING SOAP		1.66	M.Tons	72,827	36,343	200.4
ii.	DETERGENT POWDER		1.66	M.Tons	71,115	86,645	82.1
iii.	TOILET SOAP		1.66	M.Tons	33,229	12,226	271.8
14.	<u>PETROLEUM PRODUCTS</u>	2	9.32				
i.	L.P.G		9.32	"000" Liters.	18,314	10,698	171.2
ii.	NAPHTHA SOLVENT		9.32	"000" Liters.	268,694	107,517	249.9
iii.	KEROSENE OIL		9.32	"000" Liters.	3,751	1,883	199.2
iv.	H.S.D		9.32	"000" Liters.	812,104	769,626	105.5
v.	FURNACE OIL		9.32	"000" Liters.	353,578	313,556	112.8
vi.	ASPHALT 80-100		9.32	"000" Liters.	23,223	1,360	1707.5
vii.	ASPHALT 60-70		9.32	"000" Liters.	76,851	24,501	313.7
viii.	MOTOR SPRIT		9.32	"000" Liters.	164,655	122,017	134.9
ix.	JET FUEL		9.32	"000" Liters.	120,132	69,303	173.3
x.	LUBRICATING OIL		9.32	"000" Liters.	118,142	77,714	152.0
xi.	OTHERS		0.00	"000" Liters.	272,891	131,389	207.7
15.	<u>TYRES & TUBES</u>	4	0.41				
i.	MOTOR TYRE		0.41	Nos.	1,452,200	1,330,610	109.1
ii.	MOTOR TUBE		0.41	Nos.	136,584	144,707	94.4
16.	<u>CEMENT</u>	11	3.86				
i.	CEMENT		3.86	M.Tons	3,621,767	2,699,541	134.2

Sr. No.	Industrial Sector/ Items	No. of Industrial Units as per CMI 2005-06	WEIGHT (2005-06)	Unit of Quantity	Production		Index of Production in 2021-22 (Jul-Dec) with 2020-21 (Jul-Dec)
					2021-22 (Jul-Dec)	2020-21 (Jul-Dec)	
17.	<u>M.S.PRODUCTS</u>	28	4.88				
i.	<u>M.S PRODUCTS</u>		4.88	M.Tons	75,143	36,573	205.5
18.	<u>STEEL PRODUCTS</u>	2	1.02				
i.	<u>STEEL PRODUCTS</u>		1.02	M.Tons	16,914	10,104	167.4
19.	<u>SAFETY RAZOR BLADE</u>	1	0.40				
i.	<u>SAFETY RAZOR BLAD</u>		0.04	"000" NOs.	293,581	438,667	66.9
20.	<u>SEWING MACHINES</u>	3	0.25				
i.	<u>SEWING MACHINES</u>		0.25	Nos.	8,294	8,595	96.5
21.	<u>ELEC. APPLIANCES</u>	3	2.21				
i.	<u>REFRIGERATORS</u>		0.11	Nos.	428,054	250,318	171.0
ii.	<u>AIR-CONDITIONERS</u>		0.60	Nos.	162,765	35,907	453.3
iii.	<u>DEEP FREEZERS</u>		0.50	Nos.	24,143	7,660	315.2
iv.	<u>WASHING MACHINES</u>		0.50	Nos.	227,464	170,858	133.1
v.	<u>MICROWAVE OVEN</u>		0.50	Nos.	279,391	226,804	123.2
22.	<u>AUTOMOBILE</u>	17	11.15				
i.	<u>TRUCKS</u>		2.71	Nos.	2,634	1,557	169.2
ii.	<u>BUSES</u>		0.77	Nos.	230	281	81.9
iii.	<u>LCV'S</u>		2.50	Nos.	13,651	8,798	155.2
iv.	<u>MOTOR CYCLES</u>		2.06	Nos.	908,171	1,017,685	89.2
v.	<u>TRACTORS</u>		0.25	Nos.	26,945	23,207	116.1
vi.	<u>CARS</u>		0.50	Nos.	107,249	62,041	172.9
vii.	<u>VANS & JEEPS</u>		1.18	Nos.	7,300	4,107	177.7
viii.	<u>THREE WHEELERS</u>		1.18	Nos.	19,114	28,376	67.4
Grand Total		537	70.43				

Table 5: Employment in Selected Large-Scale Manufacturing Sector, December-2021 Vs November-2021

Sr. No.	Industrial Sector/ Items	No. of Industrial Units as per CMI 2005-06	Total Employees		Production Worker	
			Dec:2021	Nov:2021	Dec:2021	Nov:2021
1	<u>VEGETABLE GHEE</u>	35	2,000	2,053	1,551	1,550
2	<u>SUGAR</u>	26	12,685	13,144	8,284	8,156
3	<u>TEA</u>	7	1,658	1,865	1,165	1,468
4	<u>BEVERAGES</u>	13	4,667	4,490	1,364	1,354
5	<u>COTTON TEXTILE</u>	133	67,878	62,199	57,630	55,158
6	<u>LEATHER TANNING</u>	30	5,570	6,570	5,150	6,150
7	<u>PAPER & PAPER BOARD</u>	6	2,002	2,002	1,426	1,426
8	<u>PHARMACEUTICALS</u>	78	15,132	16,869	7,736	7,436
9	<u>ACID, ALKALIES & SALT</u>	3	40	40	25	25
10	<u>FERTILIZER</u>	3	2,622	2,622	1,839	1,839
11	<u>PAINTS & VARNISH</u>	9	224	174	146	106
12	<u>SOAP</u>	38	2,893	2,246	2,704	2,190
13	<u>PETROLEUM PRODUCTS</u>	2	1,329	1,326	1,017	992
14	<u>TYRES & TUBES</u>	4	3,958	4,958	2,460	3,060
15	<u>CEMENT</u>	11	2,825	2,825	1,848	1,848
16	<u>STEEL PRODUCTS</u>	2	190	188	121	121
17	<u>M.S PRODUCTS</u>	28	534	655	366	470
18	<u>SAFETY RAZOR BLAD</u>	1	556	556	516	516
19	<u>SEWING MACHINES</u>	3	122	172	106	166
20	<u>ELEC. APPLIANCES</u>	3	1,683	1,683	1,459	1,459
21	<u>AUTOMOBILE</u>	17	9,833	8,255	7,080	6,118
22	<u>STORAGE BATTERIES</u>	4	2,705	2,305	3,030	2,930
	Grand Total	456	141,104	137,195	107,021	104,536

Table 6: Employment in Selected Large-Scale Manufacturing Sector, December-2021 Vs December-2020

Sr. No.	Industrial Sector/ Items	No. of Industrial Units as per CMI 2005-06	Employees		Production Worker	
			Dec:2021	Dec:2020	Dec:2021	Dec:2020
1	<u>VEGETABLE GHEE</u>	35	2,000	2,234	1,551	1,596
2	<u>SUGAR</u>	26	12,685	10,240	8,284	6,489
3	<u>TEA</u>	7	1,658	3,101	1,165	2,669
4	<u>BEVERAGES</u>	13	4,667	3,592	1,364	1,040
5	<u>COTTON TEXTILE</u>	133	67,878	53,290	57,630	41,015
6	<u>LEATHER TANNING</u>	30	5,570	6,690	5,150	5,617
7	<u>PAPER & PAPER BOARD</u>	6	2,002	2,160	1,426	1,536
8	<u>PHARMACEUTICALS</u>	78	15,132	6,442	7,736	3,116
9	<u>ACID, ALKALIES & SALT</u>	3	40	18	25	13
10	<u>FERTILIZER</u>	3	2,622	974	1,839	815
11	<u>PAINTS & VARNISH</u>	9	224	103	146	50
12	<u>SOAP</u>	38	2,893	2,271	2,704	1,659
13	<u>PETROLEUM PRODUCTS</u>	2	1,329	431	1,017	333
14	<u>TYRES & TUBES</u>	4	3,958	5,712	2,460	4,060
15	<u>CEMENT</u>	11	2,825	4,799	1,848	2,042
16	<u>STEEL PRODUCTS</u>	2	190	225	121	143
17	<u>M.S PRODUCTS</u>	28	534	1,083	366	844
18	<u>SAFETY RAZOR BLAD</u>	1	556	265	516	243
19	<u>SEWING MACHINES</u>	3	122	410	106	354
20	<u>ELECTRICAL APPLIANCES</u>	3	1,683	750	1,459	663
21	<u>AUTOMOBILE</u>	17	9,833	15,832	7,080	7,486
22	<u>STORAGE BATTERIES</u>	4	2,705	1,817	3,030	1,597
Grand Total		456	141,104	122,438	107,021	83,379

**Table 7: Average Monthly Employment in Selected Large Scale Manufacturing Sector,
2021 (Jul to Dec) Vs 2020 (Jul to Dec)**

Sr. No.	Industrial Sector/ Items	No. of Industrial Units as per CMI 2005-06	Average Monthly Total Employment		Average Monthly Production Worker	
			(Jul-Dec) 2021-22	(Jul-Dec) 2020-21	(Jul-Dec) 2021-22	(Jul-Dec) 2020-21
1	<u>VEGETABLE GHEE</u>	35	1,948	2,583	1,437	1,387
2	<u>SUGAR</u>	26	11,547	7,348	7,084	5,776
3	<u>TEA</u>	7	2,372	3,089	1,963	2,643
4	<u>BEVERAGES</u>	13	5,290	3,247	1,522	1,218
5	<u>COTTON TEXTILE</u>	133	59,121	53,525	49,898	41,134
6	<u>LEATHER TANNING</u>	30	7,627	6,722	7,259	5,630
7	<u>PAPER & PAPER BOARD</u>	6	1,881	2,171	1,339	1,546
8	<u>PHARMACEUTICALS</u>	78	16,181	6,568	6,624	3,155
9	<u>ACID, ALKALIES & SALT</u>	3	40	18	25	13
10	<u>FERTILIZER</u>	3	2,208	981	1,612	814
11	<u>PAINTS & VARNISH</u>	9	138	105	87	51
12	<u>SOAP</u>	38	2,034	2,015	1,818	1,669
13	<u>PETROLEUM PRODUCTS</u>	2	1,130	432	894	334
14	<u>TYRES & TUBES</u>	4	5,416	5,667	3,659	4,039
15	<u>CEMENT</u>	11	2,871	5,083	1,862	2,245
16	<u>STEEL PRODUCTS</u>	1	239	153	153	98
17	<u>M.S PRODUCTS</u>	28	846	1,081	626	840
18	<u>SAFETY RAZOR BLAD</u>	1	371	273	344	244
19	<u>SEWING MACHINES</u>	3	231	410	203	354
20	<u>ELECTRICAL APPLIANCES</u>	3	1,283	750	1,071	663
21	<u>AUTOMOBILE</u>	17	14,556	15,881	11,229	7,551
22	<u>STORAGE BATTERIES</u>	4	2,330	1,713	2,737	1,622
	Grand Total	455	139,661	119,813	103,446	83,023

Annexure – A Proforma/ Questionnaire



**GOVERNMENT OF SINDH
PLANNING & DEVELOPMENT DEPARTMENT
BUREAU OF STATISTICS**

www.sindhbos.gov.pk

Street-13, Block-8, Kehkashan Clifton, Karachi-75600, P.O.Box# 3879

☎ 021-99251259 📄 021-35296415 ✉ m.kazimjafri@hotmail.com

The information supplied will be kept strictly confidential and will be used for statistical purpose only.	REPORT FOR	
	MONTH	YEAR

MONTHLY SURVEY OF INDUSTRIAL PRODUCTION AND EMPLOYMENT IN SINDH.

INDUSTRY CODE Estb: Code

LOCATION CODE

PART-I GENERAL PARTICULARS

- i) Name and Address of the Establishment _____
- ii) Name, Designation, Telephone, Cell and _____
- Fax# of the person to be contacted. _____
- iii) Website and E-mail Address _____

PART-II PRODUCTION DATA

S.No	Major Items of Production	Code	Unit of Quantity	Code	Previous Month	Current Month	Reasons of Growth/ Decline

PART-III WORKING DAYS AND EMPLOYMENT

- i) No. of days establishment worked _____
- ii) No. of Production workers. Male _____ Female _____ Total _____
- iii) No. of Non production workers Male _____ Female _____ Total _____
- TOTAL (ii + iii) Male _____ Female _____ Total _____

Note: Production Workers mean those who are directly associated with production. It includes those engaged in manufacturing, assembling packing repairing etc. Working Supervisor should also be included, Non production worker mean those who are not directly associated with production it includes Administrative Clerical and Services Staff like Chowkidar, Driver and Sweeper.

Signature _____
Designation _____
Date _____

Annexure – B Important Definitions

Large Scale Manufacturing Industries

Establishments where 10 or more employees are working are called large Scale Manufacturing Industries.

Employees

Employees mean all persons whether part time or full time who work in the establishments and receive remuneration in cash or in kind. Working proprietors, unpaid family workers and home workers are excluded from the category of employee. There are two types of employees Production Workers and Non-Production Workers.

- **Production Workers**

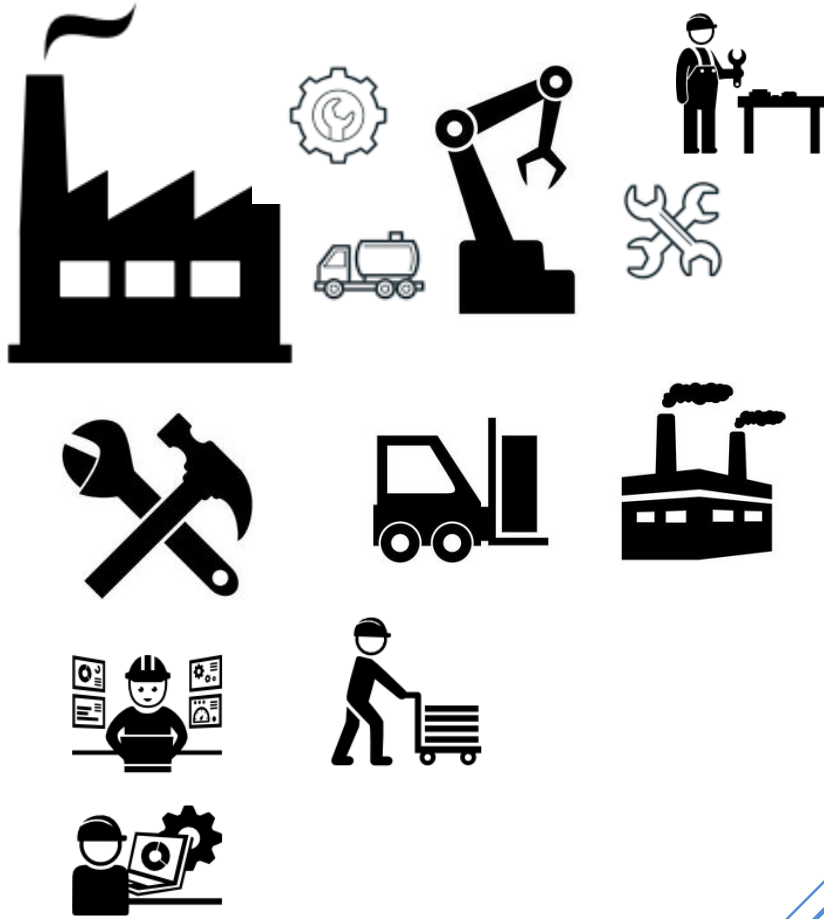
Are engaged in work directly associated with production like manufacturing, assembling, packing, repairing etc. Working supervisors and persons engaged for repairs and maintenance are also included.

- **Non-Production Workers**

Include administrative and professional employees, white-collar office employees, drivers, watchmen/ guards, peons, sweepers, office boys, etc.

Annexure – C Data Users

- **Ministry of Industries & Production, Government of Pakistan.**
- **Planning & Development Department, Government of Sindh.**
- **Pakistan Bureau of Statistics, Government of Pakistan.**
- **State Bank of Pakistan.**
- **Provincial Bureaus of Statistics, Punjab, KPK and Baluchistan.**
- **Research & Training Wing, Planning & Development Department, Government of Sindh.**



(Industries Section)
Bureau of Statistics
Planning & Development
Department
Government of Sind
m.kazimjafri@hotmail.com

ST:13 Block-8 Kehkashan Clifton, Ch. Kahliqz-zaman road, Karachi
Ph. 021-99251259, Email: ddindustries.sindhbos@gmail.com
www.sindhbos.gov.pk