

MONTHLY SURVEY OF INDUSTRIAL PRODUCTION & EMPLOYMENT IN SINDH

**November,
2021**

Industries Section, BOS



BUREAU OF STATISTICS
PLANNING & DEVELOPMENT DEPARTMENT
GOVERNMENT OF SINDH



**Sindh Monthly
Survey of
Industrial
Production &
Employment
(MIPE)
November,
2021**

**Bureau of Statistics
Planning & Development Department
Government of Sindh**

**www.sindhbos.gov.pk
ddindustries.sindhbos@gmail.com**

ST:13 Block-8 Kehkashan Clifton, Ch. Kahliquz-zaman road, Karachi
Ph. 021-99251259

Preface

Monthly Survey of Industrial Production and Employment (MIPE) is being conducted/ published by Sindh Bureau of Statistics on regular basis. This report provides important statistics in respect of industrial production & employment of large Scale Manufacturing (LSM) industries in Sindh.

This report contains information on 61 items manufactured in 22 selected large scale industrial sectors covering 537 industrial establishments (selection on the basis of CMI 2005-06). These industries account for 70.43% of total value added of large scale manufacturing sector in Sindh.

MIPE Report provides information regarding General Index and Quantum Index of Manufacturing (QIM) to base period 2005-06, and analytical analysis on the current status of production and employment in manufacturing sector.

All the efforts are made to improve the industrial statistics and hope this report would prove useful to policy makers, planners, researchers and other data users. Suggestion/ recommendations from the users will always be welcomed and appreciated.

Dr. Ishaque Ahmed Ansari
Director General
Bureau of Statistics
Planning & Development Department
Government of Sindh

Table of Contents

LIST OF TABLES	III
LIST OF FIGURES.....	III
LIST OF EQUATIONS	III
MIPE TEAM (INDUSTRIES SECTION)	IV
1. INTRODUCTION	1
1.1. QUESTIONNAIRE/ PROFORMA	2
1.2. METHODOLOGY.....	2
1.3. EDITING.....	2
2. QUANTUM INDEX OF MANUFACTURING (QIM).....	3
REPORT ANALYSIS.....	4
ANNEXURE – A PROFORMA/ QUESTIONNAIRE	15
ANNEXURE – B IMPORTANT DEFINITIONS	16
ANNEXURE – C DATA USERS	17

List of Tables

TABLE 1: SERIES OF QUANTUM INDEX OF MANUFACTURING (QIM) AT (2005-06=100)	4
TABLE 2: PRODUCTION OF SELECTED ITEMS PERTAINING TO LARGE-SCALE MANUFACTURING SECTOR, NOVEMBER-2021 Vs OCTOBER-2021	6
TABLE 3: PRODUCTION OF SELECTED ITEMS PERTAINING TO LARGE-SCALE MANUFACTURING SECTOR, NOVEMBER-2021 Vs NOVEMBER-2020	8
TABLE 4: PRODUCTION OF SELECTED ITEMS PERTAINING TO LARGE-SCALE MANUFACTURING SECTOR,	10
TABLE 5: EMPLOYMENT IN SELECTED LARGE-SCALE MANUFACTURING SECTOR, NOVEMBER-2021 Vs OCTOBER-2021	12
TABLE 6: EMPLOYMENT IN SELECTED LARGE-SCALE MANUFACTURING SECTOR, NOVEMBER-2021 Vs NOVEMBER-2020	13
TABLE 7: AVERAGE MONTHLY EMPLOYMENT IN SELECTED LARGE SCALE MANUFACTURING SECTOR,	14

List of Figures

FIGURE 1: TREND OF QUANTUM INDEX OF LARGE SCALE MANUFACTURING INDUSTRIES AT BASE YEAR 2005-06	5
FIGURE 2: TREND OF AVERAGE MONTHLY EMPLOYMENT IN LARGE SCALE MANUFACTURING INDUSTRIES	5

List of Equations

EQUATION 1 LASPAYER'S INDEX	3
-----------------------------	---

MIPE Team (Industries Section)

Team Lead:

Muhammad Kazim Jafri

Deputy Director

Team Members:

Ms. Rukhsana Aziz

Statistical Officer

Support in Data Collection and Compilation:

1. **Mr. Syed Younus Bukhari**
Stenographer

Jr.

2. **Mr. Muhammad Akram Bhatti**

Statistical Computer

1. Introduction

A robust manufacturing sector promotes domestic production, exports and generates employment, hence stimulates the overall growth of an economy. In Pakistan, manufacturing sector contributes 12.79% to Gross Domestic Product (GDP) at 9.73 percent of GDP dominates the overall manufacturing sector and the sector employs 16.1 % of the country's labor force. Industrial Statistics is very essential tool to track industrial growth and implementation of policies in right directions. This sector has great importance for economic development of country. As per the composition of Pakistan's economy in 2020-21, Agriculture Sector is 19.2%, Industries Sector is 19.1% and Services Sector is 61.7%.

Manufacturing sector consists of three sub-sectors: Large Scale Manufacturing (LSM), Small Scale Manufacturing (SSM) and Slaughtering. According to the Pakistan Bureau of Statistics, Industrial sector performance is more dependent on Large-Scale Manufacturing (LSM) as it holds 51% share in Industry whereas LSM is reflected by Quantum Index of Manufacturing (QIM) data. Quantum Index of Manufacturing (QIM) is a measure of LSM performance with 70.33 weight in overall LSM and derived from the Census of Manufacturing Industries (CMI) 2005-06.

The role of Sindh province in the Large Scale Manufacturing is very vital. However, Sindh QIM's trend of overall manufacturing index has random behavior with ups and downs; which main cause in last year is COVID-19 and recession in economy. As the Karachi is the largest metropolitan city of Pakistan, according to Karachi Chamber of Commerce and Industry (KCCI) it produces 15% with an annual Gross Domestic Product (GDP). Sindh Business Register (SBR), 2017 established by Sindh Bureau of Statistics, Planning & Development Department during the field operation CMI 2015-16 started from January, 2017 shows that 67% establishments/ factories are located in Karachi Division and remaining 33% are located in other districts of Sindh.

For the timely and quality industrial statistics, Sindh Bureau of Statistics, Planning & Development Department has been conducting Monthly Survey of Industrial Production and Employment (MIPE). This survey report includes 61 items manufactured in 22 large scale Industrial sectors from 537 establishments/ factories in Sindh. The sample of 537 firms was drawn from the last Census of Manufacturing Industries (CMI), 2005-06 and these industries account for 70.43% of total value added in terms of production during 2005-06.

1.1. Questionnaire/ Proforma

A questionnaire/ Proforma is a research instrument consisting of a series of questions and other prompts for the purpose of gathering information from respondents. A pre-tested questionnaire is used for the data collection of industrial inputs related to employment and production, attached at Annex-A.

1.2. Methodology

The basic method of data collection for Sindh MIPE is the posting/ mailing of MIPE Questionnaires. More than 70% monthly returns are received to this Bureau through mail from industrial units. The non-responding or remaining establishments are visited by the officers/ officials of this Bureau, besides this the method of emailing, fax and telephonic approach are also used for collection of monthly returns and increase the response rate.

1.3. Editing

All the received returns are scrutinized for accuracy and consistency with previous data by the Industries Section of this Bureau. As per *Unit Calculation Sheet* different units of similar products are converted into the reporting units. In case of huge discrepancy between current and previous returns the factory management is approached to rectify that figures. In the absence establishment's return or non-availability of concerned person the average production of last month or the last month information is repeated for equivalence.

2. Quantum Index of Manufacturing (QIM)

A quantum index is an index based on quantity units of goods such as number or weight. Sindh bureau of Statistics is computing Index on Industrial Production using 2005-06 as base year. Index Series is generated by using Laspayer's Index.

$$QIM = \frac{\sum_{i=1}^n \frac{q_{im}}{q_{i0}} w_i}{\sum_{i=1}^n w_i} \times 100$$

Equation 1 Laspayer's Index

q_{im} = Production of i^{th} item during the current month

q_{i0} = Average Production of the same i^{th} item in the base period (2005-06)

w_i = Weight of the i^{th} item in the base period (2005-06)

$\sum_{i=1}^n w_i$ = Total Weight of 22 large scale industrial sectors covering 537 establishments in the base period with respect to the total value added of all the industries covered in CMI in the base year 2005-06.

Report Analysis

Summary findings on the basis of Index of Industrial Production are as follows:

- Overall Production in November, 2021 is significantly increased by 8.5% as compared to last month of October, 2021.
- Production in manufacturing sector for the month of November, 2021 has a gigantic positive jump of 35.2% as compared to corresponding month of last year. The plausible reason for this huge increase is the less production during COVID in Nov, 2020.
- Cumulative production from July to November (2021-22) is significantly increased by 33.0% than the cumulative production of July-November (2020-21) which also reflects the less production during COVID period in 2020.
- Large Scale Manufacturing employment during November, 2021 increased 0.7% as compared to previous month.
- Employment during November, 2021 is 11.18% higher than November, 2020.
- Average monthly employment during the period of July-November (2021-22) is 16.8% higher as compared to the corresponding period of July-November (2020-21).

Table 1: Series of Quantum Index of Manufacturing (QIM) at (2005-06=100)

Month/ Year	2016-17	2017-18	2018-19	2019-20	2020-21	2021-22
July	284.0	327.0	290.8	259.7	294.2	346.3
August	287.7	336.4	265.5	220.9	238.5	368.7
September	281.5	330.9	311.3	266.7	295.4	387.1
October	291.4	355.7	287.0	277.0	315.6	400.5
November	317.1	343.2	273.3	280.3	320.5	434.6
December	302.8	341.5	265.2	223.7	350.6	
January	286.1	374.0	321.3	263.8	347.2	
February	283.3	324.5	309.0	313.2	336.1	
March	275.6	341.4	279.7	258.2	337.1	
April	276.8	338.5	258.2	172.1	308.9	
May	283.9	311.3	248.2	199.8	282.5	
June	258.1	307.4	257.6	324.9	341.9	
Average (Geometric Mean)	285.4	335.5	279.7	251.3	312.4	

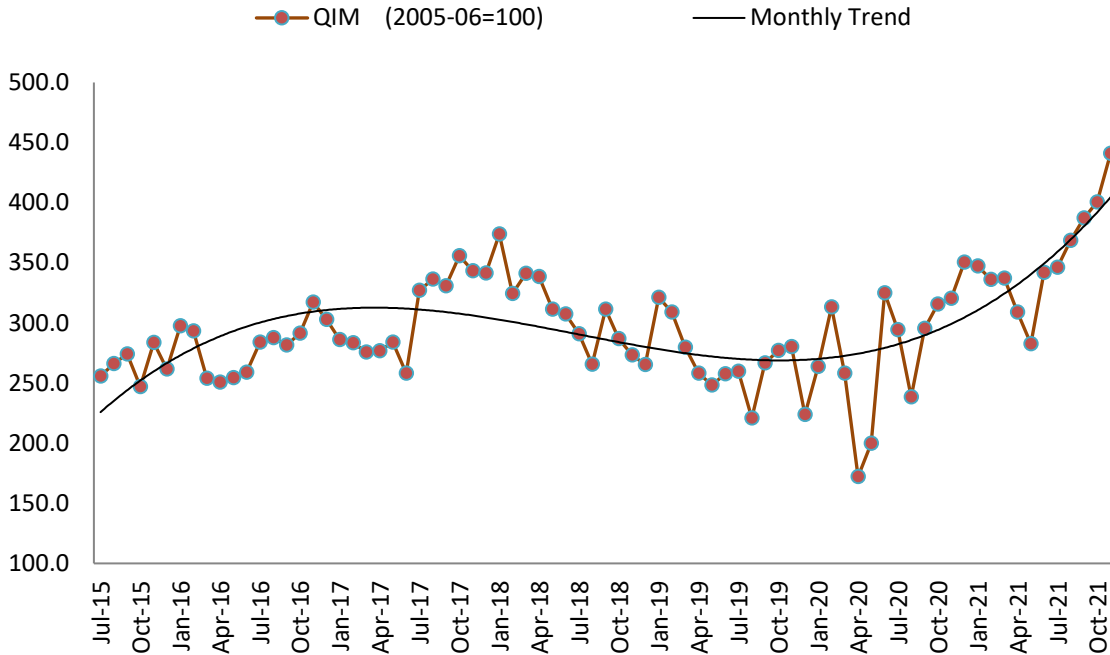


Figure 1: Trend of Quantum Index of Large Scale Manufacturing Industries at base year 2005-06

QIM index in last six months of current financial year 2020-21 is showing an increasing trend. Similarly in month to month change last month growth reported significantly high around 10% which major cause was the increase in production seasonal item sugar and few automobile items.

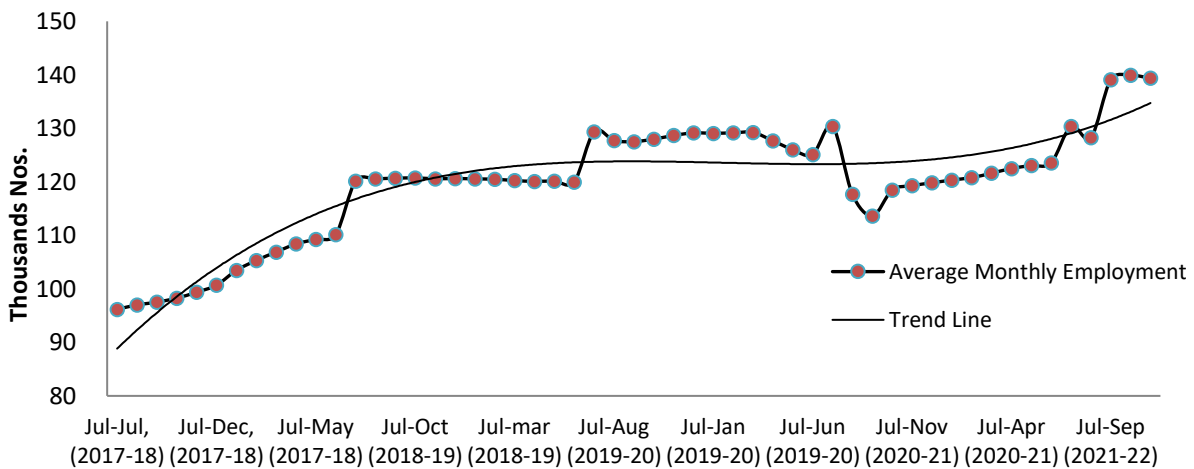


Figure 2: Trend of Average Monthly Employment in Large Scale Manufacturing Industries

Overall employment trend in last financial year 2020-21 is looking upward. In current month the employment increased just 0.7% as compared to last month and the major chunk of employment was increased in textile.

Table 2: Production of Selected Items Pertaining to Large-Scale Manufacturing Sector, November-2021 Vs October-2021

Sr. No.	Industrial Sector/ Items	No. of Industrial Units as per CMI 2005-06	WEIGHT (2005-06)	Unit of Quantity	Production		Index of Production in Nov:2021 with Oct: 2021
					Nov:2021	Oct:2021	
1.	<u>VEGETABLE GHEE</u>	35	1.61				
i.	VEGETABLE GHEE		1.11	M.Tons	18,294	33,739	54.2
ii.	COOKING OIL		0.50	M.Tons	35,426	17,423	203.3
2.	<u>SUGAR</u>	26	4.32				
i.	SUGAR		4.32	M.Tons	108,746	-	
3.	<u>TEA</u>	7	1.23				
i.	TEA		1.23	M.Tons	4,730	4,453	106.2
4.	<u>BEVERAGES</u>	13	0.85				
i.	BEVERAGES		0.85	"000" NOs.	63,666	74,901	85.0
ii.	WATER		0.85	"000" NOs.	19,694	16,735	117.7
5.	<u>COTTON TEXTILE</u>	133	13.65				
i.	COTTON YARN		9.10	M.Tons	26,987	23,206	116.3
ii.	COTTON FABRICS		4.13	"000" Sq. M	37,616	22,833	164.7
iii.	M.M.YARN		0.42	M.Tons	3,438	3,220	106.8
6.	<u>LEATHER TANNING</u>	30	0.07				
i.	UPPER LEATHER		0.07	"000" Sq. M.	374	439	85.2
7.	<u>COTTON GINNING & PRESSING</u>	85	3.30				
i.	C.G.& PRESSING		3.30	Bales	1,821,268	1,490,849	122.2
8.	<u>PAPER & PAPER BOARD</u>	6	0.01				
i.	PRINTING PAPER		0.01	M.Tons	309	294	105.1
ii.	WRITTEN PAPER		0.01	M.Tons	370	352	105.1
iii.	PACKING & OTHER PAPER		0.01	M.Tons	2,010	1,914	105.0
iv.	ADVERTISING MATERIAL		0.01	M.Tons	272	-	
9.	<u>PHARMACEUTICALS</u>	78	6.37				
i.	TABLETS		1.67	"000" NOs.	1,357,986	1,401,128	96.9
ii.	LIQUIDS/SYRUPS		1.97	"000" Liters.	9,760	11,940	81.7
iii.	CAPSULS		1.36	"000" NOs.	62,123	204,902	30.3
iv.	INJECTIONS		1.22	"000" NOs.	194,657	72,237	269.5
v.	OINTMENT		0.15	KGs.	218,312	229,802	95.0
10.	<u>ACID, ALKALIES & SALT</u>	3	0.04				
i.	SULPHURIC ACID		0.04	M.Tons	3,145	2,995	105.0
11.	<u>FERTILIZER</u>	3	3.50				
i.	UREA		3.50	M.Tons	346,022	316,596	109.3
ii.	AMONIA		3.50	M.Tons	74,444	62,085	119.9
iii.	DAP		3.50	M.Tons	61,580	112,139	54.9
12.	<u>PAINTS & VARNISH</u>	9	0.32				
i.	PAINTS		0.32	M.Tons	238	244	97.4
ii.	VARNISH		0.32	"000" Liters.	20	5	400.0
13.	<u>SOAP</u>	38	1.66				
i.	WASHING SOAP		1.66	M.Tons	16,593	9,510	174.5
ii.	DETERGENT POWDER		1.66	M.Tons	14,078	13,408	105.0
iii.	TOILET SOAP		1.66	M.Tons	5,864	2,816	208.2
iv.	TOOTH PASTE		1.66	M.Tons	882	806	109.4

Sr. No.	Industrial Sector/ Items	No. of Industrial Units as per CMI 2005-06	WEIGHT (2005-06)	Unit of Quantity	Production		Index of Production in Nov:2021 with Oct: 2021
					Nov:2021	Oct:2021	
14.	<u>PETROLEUM PRODUCTS</u>	2	9.32				
i.	L.P.G		9.32	"000" Liters.	3,623	3,105	116.7
ii.	NAPHTHA SOLVENT		9.32	"000" Liters.	46,617	49,070	95.0
iii.	KEROSENE OIL		9.32	"000" Liters.	806	1,124	71.7
iv.	H.S.D		9.32	"000" Liters.	150,520	158,442	95.0
v.	FURNACE OIL		9.32	"000" Liters.	69,030	72,663	95.0
vi.	ASPHALT 80-100		9.32	"000" Liters.	9,285	2,533	366.6
vii.	ASPHALT 60-70		9.32	"000" Liters.	9,285	11,648	79.7
viii.	MOTOR SPRIT		9.32	"000" Liters.	21,378	32,768	65.2
ix.	JET FUEL		9.32	"000" Liters.	22,204	23,373	95.0
x.	LUBRICATING OIL		9.32	"000" Liters.	26,675	17,700	150.7
xi.	OTHERS		0.00	"000" Liters.	48,762	51,328	95.0
15.	<u>TYRES & TUBES</u>	4	0.41				
i.	MOTOR TYRE		0.41	Nos.	272,136	237,408	114.6
ii.	MOTOR TUBE		0.41	Nos.	2,834	32,458	8.7
16.	<u>CEMENT</u>	11	3.86				
i.	CEMENT		3.86	M.Tons	753,188	626,499	120.2
17.	<u>M.S.PRODUCTS</u>	28	4.88				
i.	M.S PRODUCTS		4.88	M.Tons	15,113	12,566	120.3
18.	<u>STEEL PRODUCTS</u>	2	1.02				
i.	STEEL PRODUCTS		1.02	M.Tons	2,758	1,982	139.2
19.	<u>SAFETY RAZOR BLADE</u>	1	0.40				
i.	SAFETY RAZOR BLAD		0.04	"000" NOs.	63,217	63,217	100.0
20.	<u>SEWING MACHINES</u>	3	0.25				
i.	SEWING MACHINES		0.25	Nos.	1,390	1,410	98.6
21.	<u>ELEC. APPLIANCES</u>	3	2.21				
i.	REFRIGERATORS		0.11	Nos.	76,283	72,650	105.0
ii.	AIR-CONDITIONERS		0.60	Nos.	12,278	11,693	105.0
iii.	DEEP FREEZERS		0.50	Nos.	2,802	2,669	105.0
iv.	WASHING MACHINES		0.50	Nos.	39,911	38,010	105.0
v.	MICROWAVE OVEN		0.50	Nos.	45,440	43,276	105.0
22.	<u>AUTOMOBILE</u>	17	11.15				
i.	TRUCKS		2.71	Nos.	399	440	90.7
ii.	BUSES		0.77	Nos.	44	44	100.0
iii.	LCV'S		2.50	Nos.	2,490	2,454	101.5
iv.	MOTOR CYCLES		2.06	Nos.	163,053	173,882	93.8
v.	TRACTORS		0.25	Nos.	4,607	4,894	94.1
vi.	CARS		0.50	Nos.	16,629	16,702	99.6
vii.	VANS & JEEPS		1.18	Nos.	1,022	1,170	87.4
viii.	THREE WHEELERS		1.18	Nos.	3,643	2,984	122.1
	Grand Total	537	70.43				

Table 3: Production of Selected Items Pertaining to Large-Scale Manufacturing Sector, November-2021 Vs November -2020

Sr. No.	Industrial Sector/ Items	No. of Industrial Units as per CMI 2005-06	WEIGHT (2005-06)	Unit of Quantity	Production		Index of Production in Nov:2021 with Nov:2020
					Nov:2021	Nov:2020	
1.	<u>VEGETABLE GHEE</u>	35	1.61				
i.	VEGETABLE GHEE		1.11	M.Tons	18,294	36,974	49.5
ii.	COOKING OIL		0.50	M.Tons	35,426	16,316	217.1
2.	<u>SUGAR</u>	26	4.32				
i.	SUGAR		4.32	M.Tons	108,746	93,676	116.1
3.	<u>TEA</u>	7	1.23				
i.	TEA		1.23	M.Tons	4,730	5,029	94.1
4.	<u>BEVERAGES</u>	13	0.85				
i.	BEVERAGES		0.85	"000" NOs.	63,666	79,767	79.8
ii.	WATER		0.85	"000" NOs.	19,694	15,850	124.3
5.	<u>COTTON TEXTILE</u>	133	13.65				
i.	COTTON YARN		9.10	M.Tons	26,987	17,411	155.0
ii.	COTTON FABRICS		4.13	"000" Sq. M	37,616	20,464	183.8
iii.	M.M.YARN		0.42	M.Tons	3,438	1,485	231.5
6.	<u>LEATHER TANNING</u>	30	0.07				
i.	UPPER LEATHER		0.07	"000" Sq. M.	374	892	41.9
7.	<u>COTTON GINNING & PRESSING</u>	85	3.30				
i.	C.G.& PRESSING		3.30	Bales	1,821,268	1,009,892	180.3
8.	<u>PAPER & PAPER BOARD</u>	6	0.01				
i.	PRINTING PAPER		0.01	M.Tons	309	274	112.8
ii.	WRITTEN PAPER		0.01	M.Tons	370	374	98.9
iii.	PACKING & OTHER PAPER		0.01	M.Tons	2,010	1,751	114.8
iv.	ADVERTISING MATERIAL		0.01	M.Tons	272	27	1007.4
9.	<u>PHARMACEUTICALS</u>	78	6.37				
i.	TABLETS		1.67	"000" NOs.	1,357,986	1,888,058	71.9
ii.	LIQUIDS/SYRUPS		1.97	"000" Liters.	9,760	9,001	108.4
iii.	CAPSULES		1.36	"000" NOs.	62,123	359,404	17.3
iv.	INJECTIONS		1.22	"000" NOs.	194,657	130,453	149.2
v.	OINTMENT		0.15	KGs.	218,312	199,418	109.5
10.	<u>ACID, ALKALIES & SALT</u>	3	0.04				
i.	SULPHURIC ACID		0.04	M.Tons	3,145	2,237	140.6
11.	<u>FERTILIZER</u>	3	3.50				
i.	UREA		3.50	M.Tons	346,022	239,261	144.6
ii.	AMONIA		3.50	M.Tons	74,444	47,641	156.3
iii.	DAP*		3.50	M.Tons	61,580	77,136	79.8
12.	<u>PAINTS & VARNISH</u>	9	0.32				
i.	PAINTS		0.32	M.Tons	238	88	270.2
ii.	VARNISH		0.32	"000" Liters.	20	199	10.1
13.	<u>SOAP</u>	38	1.66				
i.	WASHING SOAP		1.66	M.Tons	16,593	5,144	322.6
ii.	DETERGENT POWDER		1.66	M.Tons	14,078	14,070	100.1
iii.	TOILET SOAP		1.66	M.Tons	5,864	2,256	260.0
iv.	TOOTH PASTE		1.66	M.Tons	882	930	94.8

Sr. No.	Industrial Sector/ Items	No. of Industrial Units as per CMI 2005-06	WEIGHT (2005-06)	Unit of Quantity	Production		Index of Production in Nov:2021 with Nov:2020
					Nov:2021	Nov:2020	
14.	<u>PETROLEUM PRODUCTS</u>	2	9.32				
i.	L.P.G		9.32	"000" Liters.	3,623	2,454	147.6
ii.	NAPHTHA SOLVENT		9.32	"000" Liters.	46,617	14,400	323.7
iii.	KEROSENE OIL		9.32	"000" Liters.	806	-	
iv.	H.S.D		9.32	"000" Liters.	150,520	129,261	116.4
v.	FURNACE OIL		9.32	"000" Liters.	69,030	58,545	117.9
vi.	ASPHALT 80-100		9.32	"000" Liters.	-	431	
vii.	ASPHALT 60-70		9.32	"000" Liters.	9,285	4,112	225.8
viii.	MOTOR SPRIT		9.32	"000" Liters.	21,378	19,432	110.0
ix.	JET FUEL		9.32	"000" Liters.	22,204	11,273	197.0
x.	LUBRICATING OIL		9.32	"000" Liters.	26,675	19,168	139.2
xi.	OTHERS		0.00	"000" Liters.	48,762	35,731	136.5
15.	<u>TYRES & TUBES</u>	4	0.41				
i.	MOTOR TYRE		0.41	Nos.	272,136	196,569	138.4
ii.	MOTOR TUBE		0.41	Nos.	2,834	18,964	14.9
16.	<u>CEMENT</u>	11	3.86				
i.	CEMENT		3.86	M.Tons	753,188	466,920	161.3
17.	<u>M.S.PRODUCTS</u>	28	4.88				
i.	M.S PRODUCTS		4.88	M.Tons	15,113	3,902	387.3
18.	<u>STEEL PRODUCTS</u>	2	1.02				
i.	STEEL PRODUCTS		1.02	M.Tons	2,758	3,291	83.8
19.	<u>SAFETY RAZOR BLADE</u>	1	0.40				
i.	SAFETY RAZOR BLAD		0.04	"000" NOs.	63,217	72,338	87.4
20.	<u>SEWING MACHINES</u>	3	0.25				
i.	SEWING MACHINES		0.25	Nos.	1,390	1,430	97.2
21.	<u>ELEC. APPLIANCES</u>	3	2.21				
i.	REFRIGERATORS		0.11	Nos.	76,283	45,818	166.5
ii.	AIR-CONDITIONERS		0.60	Nos.	12,278	393	3124.1
iii.	DEEP FREEZERS		0.50	Nos.	2,802	223	1256.7
iv.	WASHING MACHINES		0.50	Nos.	39,911	31,595	126.3
v.	MICROWAVE OVEN		0.50	Nos.	45,440	42,075	108.0
22.	<u>AUTOMOBILE</u>	17	11.15				
i.	TRUCKS		2.71	Nos.	399	274	145.6
ii.	BUSES		0.77	Nos.	44	73	60.3
iii.	LCV'S		2.50	Nos.	2,490	2,028	122.8
iv.	MOTOR CYCLES		2.06	Nos.	163,053	164,855	98.9
v.	TRACTORS		0.25	Nos.	4,607	3,807	121.0
vi.	CARS		0.50	Nos.	16,629	11,352	146.5
vii.	VANS & JEEPS		1.18	Nos.	1,022	883	115.7
viii.	THREE WHEELERS		1.18	Nos.	3,643	4,170	87.4
	Grand Total	537	70.43				

**Table 4: Production of Selected Items Pertaining to Large-Scale Manufacturing Sector,
2021-22 (Jul to Nov) Vs 2020 (Jul to Nov)**

Sr. No.	Industrial Sector/ Items	No. of Industrial Units as per CMI 2005-06	WEIGHT (2005-06)	Unit of Quantity	Production		Index of Production in 2021-22 (Jul-Nov) with 2020-21 (Jul-Nov)
					2021-22 (Jul-Nov)	2020-21 (Jul-Nov)	
1.	<u>VEGETABLE GHEE</u>	35	1.61				
i.	VEGETABLE GHEE		1.11	M.Tons	135,000	175,362	77.0
ii.	COOKING OIL		0.50	M.Tons	110,363	75,075	147.0
2.	<u>SUGAR</u>	26	4.32				
i.	SUGAR		4.32	M.Tons	108,746	95,146	114.3
3.	<u>TEA</u>	7	1.23				
i.	TEA		1.23	M.Tons	26,127	20,826	125.5
4.	<u>BEVERAGES</u>	13	0.85				
i.	BEVERAGES		0.85	"000" NOs.	361,468	489,995	73.8
ii.	WATER		0.85	"000" NOs.	112,096	89,051	125.9
5.	<u>COTTON TEXTILE</u>	133	13.65				
i.	COTTON YARN		9.10	M.Tons	109,284	95,472	114.5
ii.	COTTON FABRICS		4.13	"000" Sq. M	124,976	86,286	144.8
iii.	M.M.YARN		0.42	M.Tons	15,543	4,371	355.6
6.	<u>LEATHER TANNING</u>	30	0.07				
i.	UPPER LEATHER		0.07	"000" Sq. M.	2,324	3,411	68.1
7.	<u>COTTON GINNING & PRESSING</u>	85	3.30				
i.	C.G.& PRESSING		3.30	Bales	4,403,717	2,292,938	192.1
8.	<u>PAPER & PAPER BOARD</u>	6	0.01				
i.	PRINTING PAPER		0.01	M.Tons	1,693	1,543	109.7
ii.	WRITTEN PAPER		0.01	M.Tons	1,925	1,349	142.7
iii.	PACKING & OTHER PAPER		0.01	M.Tons	9,240	8,221	112.4
iv.	ADVERTISING MATERIAL		0.01	M.Tons	272	121	224.8
9.	<u>PHARMACEUTICALS</u>	78	6.37				
i.	TABLETS		1.67	"000" NOs.	6,963,548	9,972,553	69.8
ii.	LIQUIDS/SYRUPS		1.97	"000" Liters.	61,203	35,277	173.5
iii.	CAPSULES		1.36	"000" NOs.	909,115	1,683,226	54.0
iv.	INJECTIONS		1.22	"000" NOs.	495,044	594,284	83.3
v.	OINTMENT		0.15	KGs.	1,014,368	1,007,677	100.7
10.	<u>ACID, ALKALIES & SALT</u>	3	0.04				
i.	SULPHURIC ACID		0.04	M.Tons	14,339	11,494	124.8
11.	<u>FERTILIZER</u>	3	3.50				
i.	UREA		3.50	M.Tons	1,631,837	1,184,656	137.7
ii.	AMONIA		3.50	M.Tons	341,550	225,436	151.5
iii.	DAP		3.50	M.Tons	507,698	373,315	136.0
12.	<u>PAINTS & VARNISH</u>	9	0.32				
i.	PAINTS		0.32	M.Tons	1,196	343	348.6
ii.	VARNISH		0.32	"000" Liters.	41	1,136	3.6
13.	<u>SOAP</u>	38	1.66				
i.	WASHING SOAP		1.66	M.Tons	55,415	29,217	189.7
ii.	DETERGENT POWDER		1.66	M.Tons	66,417	71,356	93.1
iii.	TOILET SOAP		1.66	M.Tons	18,447	10,456	176.4
iv.	TOOTH PASTE		1.66	M.Tons	4,089	4,188	97.6

Sr. No.	Industrial Sector/ Items	No. of Industrial Units as per CMI 2005-06	WEIGHT (2005-06)	Unit of Quantity	Production		Index of Production in 2021-22 (Jul-Nov) with 2020-21 (Jul-Nov)
					2021-22 (Jul-Nov)	2020-21 (Jul-Nov)	
14.	<u>PETROLEUM PRODUCTS</u>	2	9.32				
i.	L.P.G		9.32	"000" Liters.	14,873	7,970	186.6
ii.	NAPHTHA SOLVENT		9.32	"000" Liters.	224,408	90,693	247.4
iii.	KEROSENE OIL		9.32	"000" Liters.	3,751	1,883	199.2
iv.	H.S.D		9.32	"000" Liters.	738,747	646,743	114.2
v.	FURNACE OIL		9.32	"000" Liters.	319,221	259,898	122.8
vi.	ASPHALT 80-100		9.32	"000" Liters.	13,938	1,021	1365.0
vii.	ASPHALT 60-70		9.32	"000" Liters.	67,566	17,158	393.8
viii.	MOTOR SPRIT		9.32	"000" Liters.	153,897	98,440	156.3
ix.	JET FUEL		9.32	"000" Liters.	103,170	58,160	177.4
x.	LUBRICATING OIL		9.32	"000" Liters.	92,801	58,351	159.0
xi.	OTHERS		0.00	"000" Liters.	226,567	97,989	231.2
15.	<u>TYRES & TUBES</u>	4	0.41				
i.	MOTOR TYRE		0.41	Nos.	1,269,986	1,088,436	116.7
ii.	MOTOR TUBE		0.41	Nos.	129,933	105,292	123.4
16.	<u>CEMENT</u>	11	3.86				
i.	CEMENT		3.86	M.Tons	2,944,498	2,184,042	134.8
17.	<u>M.S.PRODUCTS</u>	28	4.88				
i.	M.S PRODUCTS		4.88	M.Tons	59,177	32,914	179.8
18.	<u>STEEL PRODUCTS</u>	2	1.02				
i.	STEEL PRODUCTS		1.02	M.Tons	14,337	7,559	189.7
19.	<u>SAFETY RAZOR BLADE</u>	1	0.40				
i.	SAFETY RAZOR BLAD		0.04	"000" NOs.	239,707	363,315	66.0
20.	<u>SEWING MACHINES</u>	3	0.25				
i.	SEWING MACHINES		0.25	Nos.	7,094	7,145	99.3
21.	<u>ELEC. APPLIANCES</u>	3	2.21				
i.	REFRIGERATORS		0.11	Nos.	396,166	198,173	199.9
ii.	AIR-CONDITIONERS		0.60	Nos.	151,101	29,117	518.9
iii.	DEEP FREEZERS		0.50	Nos.	23,836	7,407	321.8
iv.	WASHING MACHINES		0.50	Nos.	189,361	136,766	138.5
v.	MICROWAVE OVEN		0.50	Nos.	235,986	179,451	131.5
22.	<u>AUTOMOBILE</u>	17	11.15				
i.	TRUCKS		2.71	Nos.	2,202	1,326	166.1
ii.	BUSES		0.77	Nos.	178	233	76.4
iii.	LCV'S		2.50	Nos.	11,719	6,957	168.4
iv.	MOTOR CYCLES		2.06	Nos.	767,888	863,352	88.9
v.	TRACTORS		0.25	Nos.	22,034	19,011	115.9
vi.	CARS		0.50	Nos.	85,081	50,527	168.4
vii.	VANS & JEEPS		1.18	Nos.	5,811	3,252	178.7
viii.	THREE WHEELERS		1.18	Nos.	15,722	23,844	65.9
	Grand Total	537	70.43				

Table 5: Employment in Selected Large-Scale Manufacturing Sector, November-2021 Vs October-2021

Sr. No.	Industrial Sector/ Items	No. of Industrial Units as per CMI 2005-06	Total Employees		Production Worker	
			Nov:2021	Oct:2021	Nov:2021	Oct:2021
1	<u>VEGETABLE GHEE</u>	35	2,053	1,799	1,550	1,280
2	<u>SUGAR</u>	26	13,144	11,006	8,156	6,414
3	<u>TEA</u>	7	1,865	2,368	1,468	2,025
4	<u>BEVERAGES</u>	13	4,490	5,165	1,354	1,581
5	<u>COTTON TEXTILE</u>	133	62,199	57,996	55,158	50,523
6	<u>LEATHER TANNING</u>	30	6,570	7,760	6,150	7,002
7	<u>PAPER & PAPER BOARD</u>	6	2,002	1,499	1,426	1,055
8	<u>PHARMACEUTICALS</u>	78	16,869	17,453	7,436	7,630
9	<u>ACID, ALKALIES & SALT</u>	3	40	40	25	25
10	<u>FERTILIZER</u>	3	2,622	2,729	1,839	1,905
11	<u>PAINTS & VARNISH</u>	9	174	108	106	67
12	<u>SOAP</u>	38	2,246	1,758	2,190	1,500
13	<u>PETROLEUM PRODUCTS</u>	2	1,326	880	992	674
14	<u>TYRES & TUBES</u>	4	4,958	5,900	3,060	4,100
15	<u>CEMENT</u>	11	2,825	2,838	1,848	1,840
16	<u>STEEL PRODUCTS</u>	2	188	284	121	183
17	<u>M.S PRODUCTS</u>	28	655	883	470	692
18	<u>SAFETY RAZOR BLAD</u>	1	556	278	516	258
19	<u>SEWING MACHINES</u>	3	172	274	166	236
20	<u>ELEC. APPLIANCES</u>	3	1,683	1,083	1,459	878
21	<u>AUTOMOBILE</u>	17	8,255	12,139	6,118	9,661
22	<u>STORAGE BATTERIES</u>	4	2,305	2,065	2,930	3,550
	Grand Total	456	137,195	136,303	104,536	103,077

Table 6: Employment in Selected Large-Scale Manufacturing Sector, November-2021 Vs November-2020

Sr. No.	Industrial Sector/ Items	No. of Industrial Units as per CMI 2005-06	Employees		Production Worker	
			Nov:2021	Nov:2020	Nov:2021	Nov:2020
1	<u>VEGETABLE GHEE</u>	35	2,053	2,591	1,550	1,596
2	<u>SUGAR</u>	26	13,144	9,364	8,156	6,524
3	<u>TEA</u>	7	1,865	3,059	1,468	2,623
4	<u>BEVERAGES</u>	13	4,490	3,245	1,354	1,620
5	<u>COTTON TEXTILE</u>	133	62,199	53,741	55,158	41,043
6	<u>LEATHER TANNING</u>	30	6,570	6,715	6,150	5,620
7	<u>PAPER & PAPER BOARD</u>	6	2,002	2,206	1,426	1,568
8	<u>PHARMACEUTICALS</u>	78	16,869	7,432	7,436	3,535
9	<u>ACID, ALKALIES & SALT</u>	3	40	18	25	13
10	<u>FERTILIZER</u>	3	2,622	978	1,839	815
11	<u>PAINTS & VARNISH</u>	9	174	103	106	50
12	<u>SOAP</u>	38	2,246	1,921	2,190	1,659
13	<u>PETROLEUM PRODUCTS</u>	2	1,326	430	992	331
14	<u>TYRES & TUBES</u>	4	4,958	5,676	3,060	4,040
15	<u>CEMENT</u>	11	2,825	5,003	1,848	2,214
16	<u>STEEL PRODUCTS</u>	2	188	229	121	148
17	<u>M.S PRODUCTS</u>	28	655	1,087	470	851
18	<u>SAFETY RAZOR BLAD</u>	1	556	265	516	243
19	<u>SEWING MACHINES</u>	3	172	410	166	354
20	<u>ELECTRICAL APPLIANCES</u>	3	1,683	750	1,459	663
21	<u>AUTOMOBILE</u>	17	8,255	15,760	6,118	7,486
22	<u>STORAGE BATTERIES</u>	4	2,305	1,648	2,930	1,603
	Grand Total	456	137,195	122,630	104,536	84,597

**Table 7: Average Monthly Employment in Selected Large Scale Manufacturing Sector,
2021 (Jul to Nov) Vs 2020 (Jul to Nov)**

Sr. No.	Industrial Sector/ Items	No. of Industrial Units as per CMI 2005-06	Average Monthly Total Employment		Average Monthly Production Worker	
			(Jul-Oct) 2021-22	(Jul-Oct) 2020-21	(Jul-Oct) 2021-22	(Jul-Oct) 2020-21
1	<u>VEGETABLE GHEE</u>	35	1,938	2,652	1,415	1,345
2	<u>SUGAR</u>	26	11,319	6,770	6,844	5,633
3	<u>TEA</u>	7	2,515	3,087	2,123	2,637
4	<u>BEVERAGES</u>	13	5,414	3,177	1,554	1,253
5	<u>COTTON TEXTILE</u>	133	57,370	53,572	48,351	41,157
6	<u>LEATHER TANNING</u>	30	8,039	6,728	7,681	5,632
7	<u>PAPER & PAPER BOARD</u>	6	1,857	2,173	1,322	1,548
8	<u>PHARMACEUTICALS</u>	78	16,391	6,593	6,401	3,163
9	<u>ACID, ALKALIES & SALT</u>	3	40	18	25	13
10	<u>FERTILIZER</u>	3	2,126	982	1,567	814
11	<u>PAINTS & VARNISH</u>	9	121	105	75	51
12	<u>SOAP</u>	38	1,862	1,964	1,640	1,671
13	<u>PETROLEUM PRODUCTS</u>	2	1,091	432	869	334
14	<u>TYRES & TUBES</u>	4	5,708	5,658	3,898	4,034
15	<u>CEMENT</u>	11	2,881	5,140	1,865	2,286
16	<u>STEEL PRODUCTS</u>	1	249	138	160	89
17	<u>M.S PRODUCTS</u>	28	908	1,081	678	839
18	<u>SAFETY RAZOR BLAD</u>	1	334	274	310	245
19	<u>SEWING MACHINES</u>	3	253	410	222	354
20	<u>ELECTRICAL APPLIANCES</u>	3	1,203	750	994	663
21	<u>AUTOMOBILE</u>	17	15,500	15,891	12,059	7,564
22	<u>STORAGE BATTERIES</u>	4	2,255	1,692	2,679	1,627
	Grand Total	455	139,373	119,288	102,732	82,952

Annexure – A Proforma/ Questionnaire



**GOVERNMENT OF SINDH
PLANNING & DEVELOPMENT DEPARTMENT
BUREAU OF STATISTICS**

www.sindhbos.gov.pk

Street-13, Block-8, Kehkashan Clifton, Karachi-75600, P.O.Box# 3879

021-99251259
 021-35296415
 m.kazimjafri@hotmail.com

The information supplied will be kept strictly confidential and will be used for statistical purpose only.	REPORT FOR	
	MONTH	YEAR

MONTHLY SURVEY OF INDUSTRIAL PRODUCTION AND EMPLOYMENT IN SINDH.

INDUSTRY CODE

Estb: Code

LOCATION CODE

PART-I GENERAL PARTICULARS

- i) Name and Address of the Establishment _____
- ii) Name, Designation, Telephone, Cell and _____
Fax# of the person to be contacted. _____
- iii) Website and E-mail Address _____

PART-II PRODUCTION DATA

S.No	Major Items of Production	Code	Unit of Quantity	Code	Previous Month	Current Month	Reasons of Growth/ Decline

PART-III WORKING DAYS AND EMPLOYMENT

- i) No. of days establishment worked _____
- ii) No. of Production workers. Male _____ Female _____ Total _____
- iii) No. of Non production workers Male _____ Female _____ Total _____
- TOTAL (ii + iii) Male _____ Female _____ Total _____

Note: Production Workers mean those who are directly associated with production. It includes those engaged in manufacturing, assembling packing repairing etc. Working Supervisor should also be included, Non production worker mean those who are not directly associated with production it includes Administrative Clerical and Services Staff like Chowkidar, Driver and Sweeper.

Signature _____
 Designation _____
 Date _____

Annexure – B Important Definitions

Large Scale Manufacturing Industries

Establishments where 10 or more employees are working are called large Scale Manufacturing Industries.

Employees

Employees mean all persons whether part time or full time who work in the establishments and receive remuneration in cash or in kind. Working proprietors, unpaid family workers and home workers are excluded from the category of employee. There are two types of employees Production Workers and Non-Production Workers.

- **Production Workers**

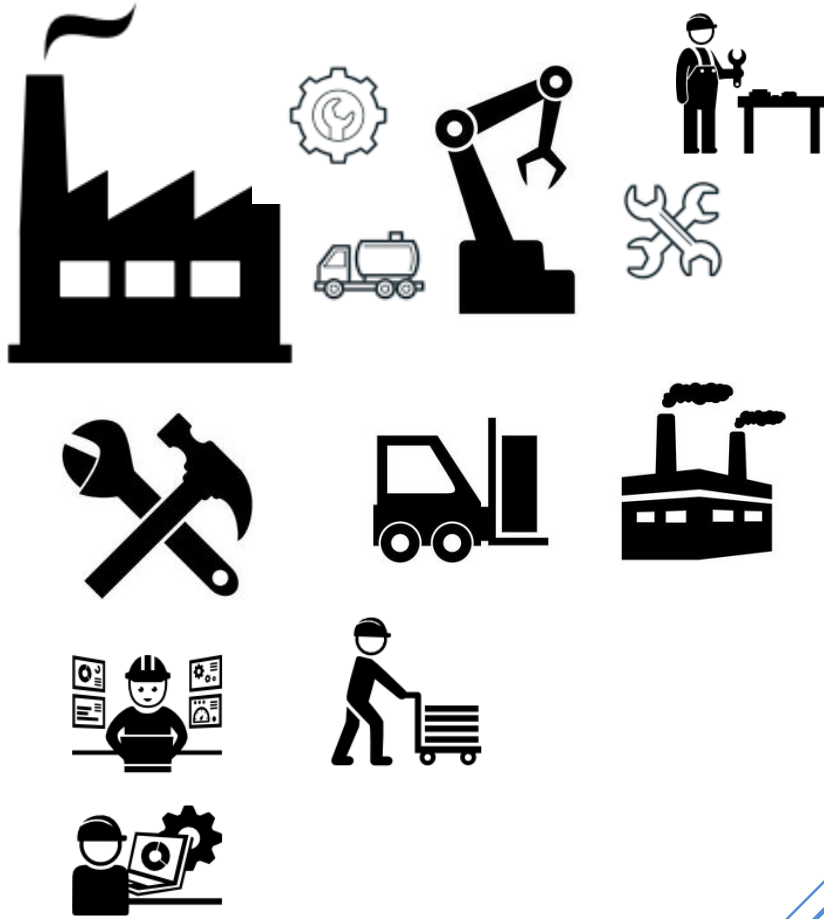
Are engaged in work directly associated with production like manufacturing, assembling, packing, repairing etc. Working supervisors and persons engaged for repairs and maintenance are also included.

- **Non-Production Workers**

Include administrative and professional employees, white-collar office employees, drivers, watchmen/ guards, peons, sweepers, office boys, etc.

Annexure – C Data Users

- **Ministry of Industries & Production, Government of Pakistan.**
- **Planning & Development Department, Government of Sindh.**
- **Pakistan Bureau of Statistics, Government of Pakistan.**
- **State Bank of Pakistan.**
- **Provincial Bureaus of Statistics, Punjab, KPK and Baluchistan.**
- **Research & Training Wing, Planning & Development Department, Government of Sindh.**



(Industries Section)
Bureau of Statistics
Planning & Development
Department
Government of Sind
m.kazimjafri@hotmail.com

ST:13 Block-8 Kehkashan Clifton, Ch. Kahliqz-zaman road, Karachi
Ph. 021-99251259, Email: ddindustries.sindhbos@gmail.com
www.sindhbos.gov.pk