

MONTHLY SURVEY OF INDUSTRIAL PRODUCTION & EMPLOYMENT IN SINDH



August, 2021

Industries Section, BOS



**BUREAU OF STATISTICS
PLANNING & DEVELOPMENT DEPARTMENT
GOVERNMENT OF SINDH**

Sindh Monthly Survey of Industrial Production & Employment (MIPE)

August, 2021



Bureau of Statistics
Planning & Development Department
Government of Sindh

www.sindhbos.gov.pk
ddindustries.sindhbos@gmail.com

ST:13 Block-8 Kehkashan Clifton, Ch. Kahliqz-zaman road, Karachi Ph. 021-99251259

Preface

Monthly Survey of Industrial Production and Employment (MIPE) is being conducted/ published by Sindh Bureau of Statistics on regular basis. This report provides important statistics in respect of industrial production & employment of large Scale Manufacturing (LSM) industries in Sindh.

This report contains information on 61 items manufactured in 22 selected large scale industrial sectors covering 537 industrial establishments (selection on the basis of CMI 2005-06). These industries account for 70.43% of total value added of large scale manufacturing sector in Sindh.

MIPE Report provides information regarding General Index and Quantum Index of Manufacturing (QIM) to base period 2005-06, and analytical analysis on the current status of production and employment in manufacturing sector.

All the efforts are made to improve the industrial statistics and hope this report would prove useful to policy makers, planners, researchers and other data users. Suggestion/ recommendations from the users will always be welcomed and appreciated.

Director General
Bureau of Statistics
Planning & Development Department
Government of Sindh

Contents

PREFACE	II
CONTENTS	III
LIST OF TABLES	IV
LIST OF FIGURES	IV
LIST OF EQUATIONS	IV
MIPE TEAM (INDUSTRIES SECTION)	V
1. INTRODUCTION	1
2. QUESTIONNAIRE/ PROFORMA	2
3. METHODOLOGY	2
4. EDITING	2
5. QUANTUM INDEX OF MANUFACTURING (QIM)	3
REPORT ANALYSIS	4
ANNEXURE – A PROFORMA/ QUESTIONNAIRE	15
ANNEXURE – B IMPORTANT DEFINITIONS	16
ANNEXURE – C DATA USERS	17

List of Tables

TABLE 1: SERIES OF QUANTUM INDEX OF MANUFACTURING (QIM) AT (2005-06=100)	4
TABLE 2: PRODUCTION OF SELECTED ITEMS PERTAINING TO LARGE-SCALE MANUFACTURING SECTOR, AUGUST-2021 Vs JULY-2021	6
TABLE 3: PRODUCTION OF SELECTED ITEMS PERTAINING TO LARGE-SCALE MANUFACTURING SECTOR, AUGUST-2021 Vs AUGUST -2020	8
TABLE 4: PRODUCTION OF SELECTED ITEMS PERTAINING TO LARGE-SCALE MANUFACTURING SECTOR,	10
TABLE 5: EMPLOYMENT IN SELECTED LARGE-SCALE MANUFACTURING SECTOR, AUGUST-2021 Vs JULY-2021	12
TABLE 6: EMPLOYMENT IN SELECTED LARGE-SCALE MANUFACTURING SECTOR, AUGUST-2021 Vs AUGUST-2020	13
TABLE 7: AVERAGE MONTHLY EMPLOYMENT IN SELECTED LARGE SCALE MANUFACTURING SECTOR,	14

List of Figures

FIGURE 1: TREND OF QUANTUM INDEX OF LARGE SCALE MANUFACTURING INDUSTRIES AT BASE YEAR 2005-06	5
FIGURE 2: TREND OF AVERAGE MONTHLY EMPLOYMENT IN LARGE SCALE MANUFACTURING INDUSTRIES	5

List of Equations

EQUATION 1 LASPAYER'S INDEX	3
-----------------------------	---

MIPE Team (Industries Section)

Team Lead:

Muhammad Kazim Jafri

Deputy Director

Team Members:

Ms. Rukhsana Aziz

Statistical Officer

Support in Data Collection and Compilation:

1. Mr. Syed Younus Bukhari

Jr. Stenographer

2. Mr. Muhammad Akram Bhatti

Statistical Computer

1. Introduction

A robust manufacturing sector promotes domestic production, exports and generates employment, hence stimulates the overall growth of an economy. In Pakistan, manufacturing sector contributes 12.79% to Gross Domestic Product (GDP) at 9.73 percent of GDP dominates the overall manufacturing sector and the sector employs 16.1 % of the country's labor force.

Industrial Statistics is very essential tool to track industrial growth and implementation of policies in right directions. This sector has great importance for economic development of country. As per the composition of Pakistan's economy in 2020-21, Agriculture Sector is 19.2%, Industries Sector is 19.1% and Services Sector is 61.7%.

Manufacturing sector consists of three sub-sectors: Large Scale Manufacturing (LSM), Small Scale Manufacturing (SSM) and Slaughtering. According to the Pakistan Bureau of Statistics, Industrial sector performance is more dependent on Large-Scale Manufacturing (LSM) as it holds 51% share in Industry whereas LSM is reflected by Quantum Index of Manufacturing (QIM) data. Quantum Index of Manufacturing (QIM) is a measure of LSM performance with 70.33 weight in overall LSM and derived from the Census of Manufacturing Industries (CMI) 2005-06.

The role of Sindh province in the Large Scale Manufacturing is very vital. However, Sindh QIM's trend of overall manufacturing index has random behavior with ups and downs; which main cause in last year is COVID-19 and recession in economy. As the Karachi is the largest metropolitan city of Pakistan, according to Karachi Chamber of Commerce and Industry (KCCI) it produces 15% with an annual Gross Domestic Product (GDP). Sindh Business Register (SBR), 2017 established by Sindh Bureau of Statistics, Planning & Development Department during the field operation CMI 2015-16 started from January, 2017 shows that 67% establishments/ factories are located in Karachi Division and remaining 33% are located in other districts of Sindh.

For the timely and quality industrial statistics, Sindh Bureau of Statistics, Planning & Development Department has been conducting Monthly Survey of Industrial Production and Employment (MIPE). This survey report includes 61 items manufactured in 22 large scale Industrial sectors from 537 establishments/ factories in Sindh. The sample of 537 firms was drawn from the last Census of Manufacturing Industries (CMI), 2005-06 and

these industries account for 70.43% of total value added in terms of production during 2005-06.

2. Questionnaire/ Proforma

A questionnaire/ Proforma is a research instrument consisting of a series of questions and other prompts for the purpose of gathering information from respondents. A pre-tested questionnaire is used for the data collection of industrial inputs related to employment and production, attached at **Annex-A**.

3. Methodology

The basic method of data collection for Sindh MIPE is the posting/ mailing of MIPE Questionnaires. More than 70% monthly returns are received to this Bureau through mail from industrial units. The non-responding or remaining establishments are visited by the officers/ officials of this Bureau, besides this the method of emailing, fax and telephonic approach are also used for collection of monthly returns and increase the response rate.

4. Editing

All the received returns are scrutinized for accuracy and consistency with previous data by the Industries Section of this Bureau. As per *Unit Calculation Sheet* different units of similar products are converted into the reporting units. In case of huge discrepancy between current and previous returns the factory management is approached to rectify that figures. In the absence establishment's return or non-availability of concerned person the average production of last month or the last month information is repeated for equivalence.

5. Quantum Index of Manufacturing (QIM)

A quantum index is an index based on quantity units of goods such as number or weight. Sindh bureau of Statistics is computing Index on Industrial Production using 2005-06 as base year. Index Series is generated by using Laspayer's Index.

$$QIM = \frac{\sum_{i=1}^n \frac{q_{im}}{q_{i0}} w_i}{\sum_{i=1}^n w_i} \times 100$$

Equation 1 Laspayer's Index

q_{im} = Production of i^{th} item during the current month

q_{i0} = Average Production of the same i^{th} item in the base period (2005-06)

w_i = Weight of the i^{th} item in the base period (2005-06)

$\sum_{i=1}^n w_i$ = Total Weight of 22 large scale industrial sectors covering 537 establishments in the base period with respect to the total value added of all the industries covered in CMI in the base year 2005-06.

Report Analysis

Summary findings on the basis of Index of Industrial Production are as follows:

- Overall Production in August, 2021 is considerably increased by 6.4% as compared to last (i.e. month July, 2021)
- Overall Production in August, 2021 has a big increased by 56.4% as compared to corresponding month of last year (i.e. August, 2020). This is the huge increase and its main cause of minimum production during COVID in August, 2020.
- Cumulative production from July to August (2021-22) is enormously increased by 35.8% than the cumulative production of July-August (2020-21) which also reflects the minimum production during COVID period (Mar-Jun).
- Employment during August, 2021 is a little decreased by 3.4% as compared to previous month (i.e. July, 2021).
- Employment during August, 2021 is 7.1% higher than August, 2020.
- Average monthly employment during the period of July-August (2021-22) is 8.9% higher as compared to the corresponding period of July-August (2020-21).

Table 1: Series of Quantum Index of Manufacturing (QIM) at (2005-06=100)

Month/ Year	2016-17	2017-18	2018-19	2019-20	2020-21	2021-22
July	284.0	327.0	290.8	259.7	294.2	346.3
August	287.7	336.4	265.5	220.9	238.5	368.7
September	281.5	330.9	311.3	266.7	295.4	
October	291.4	355.7	287.0	277.0	315.6	
November	317.1	343.2	273.3	280.3	320.5	
December	302.8	341.5	265.2	223.7	350.6	
January	286.1	374.0	321.3	263.8	347.2	
February	283.3	324.5	309.0	313.2	336.1	
March	275.6	341.4	279.7	258.2	337.1	
April	276.8	338.5	258.2	172.1	308.9	
May	283.9	311.3	248.2	199.8	282.5	
June	258.1	307.4	257.6	324.9	341.9	
Average (Geometric Mean)	285.4	335.5	279.7	251.3	312.4	

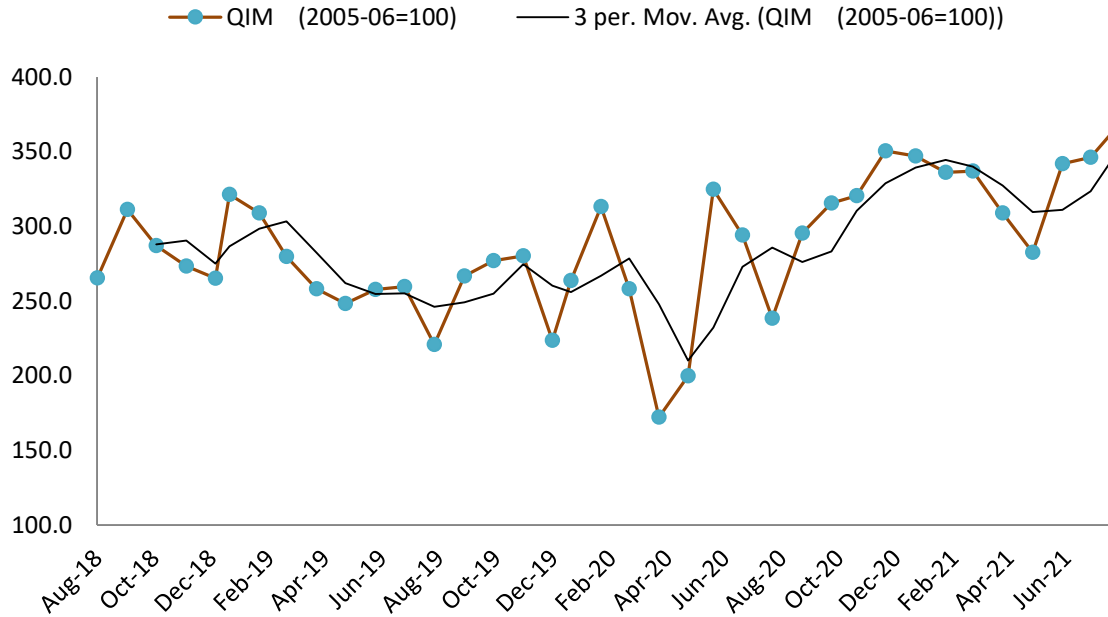


Figure 1: Trend of Quantum Index of Large Scale Manufacturing Industries at base year 2005-06

QIM index in last financial year from Jul-2020 to Jun-2021 and even after that is showing an increasing trend. After relax in lockdown for manufacturing since July, 2020 clear growth is showing in quantum index trend.

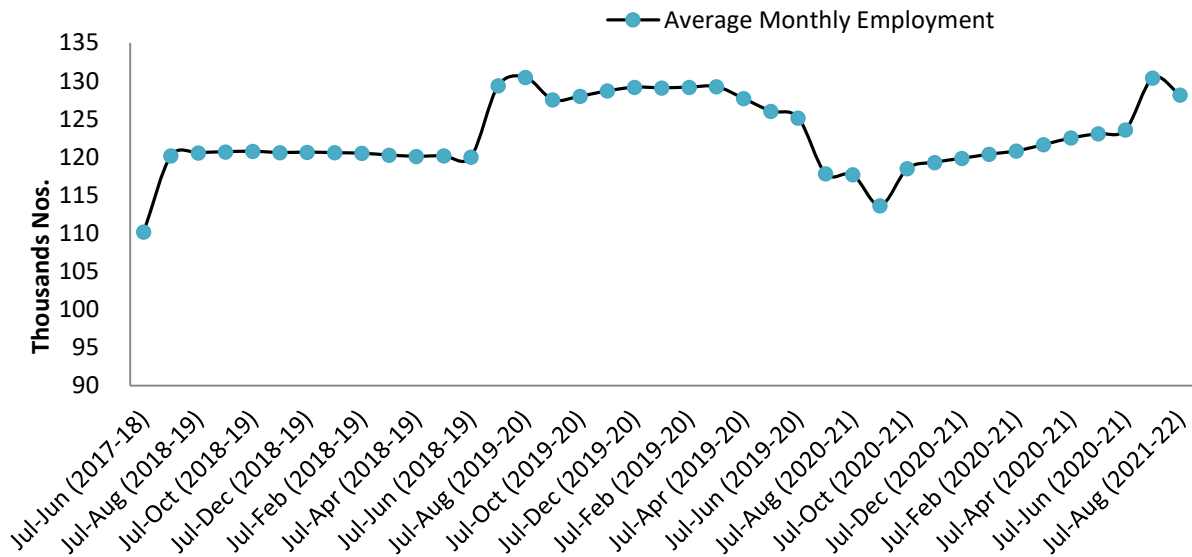


Figure 2: Trend of Average Monthly Employment in Large Scale Manufacturing Industries

Overall employment trend in last financial year 2020-21 is looking upward though the slight decline is observed in current month due decline of employment in textile sector in Sindh.

Table 2: Production of Selected Items Pertaining to Large-Scale Manufacturing Sector, August-2021 Vs July-2021

Sr. No.	Industrial Sector/ Items	No. of Industrial Units as per CMI 2005-06	WEIGHT (2005-06)	Unit of Quantity	Production		Index of Production in Aug:2021 with July: 2021
					Aug:2021	July:2021	
1.	<u>VEGETABLE GHEE</u>	35	1.61				
i.	VEGETABLE GHEE		1.11	M.Tons	26,300	29,271	89.9
ii.	COOKING OIL		0.50	M.Tons	20,004	20,917	95.6
2.	<u>SUGAR</u>	26	4.32				
i.	SUGAR		4.32	M.Tons	-	-	
3.	<u>TEA</u>	7	1.23				
i.	TEA		1.23	M.Tons	5,576	6,071	91.8
4.	<u>BEVERAGES</u>	13	0.85				
i.	BEVERAGES		0.85	"000" NOs.	75,508	84,018	89.9
ii.	WATER		0.85	"000" NOs.	25,170	25,250	99.7
5.	<u>COTTON TEXTILE</u>	133	13.65				
i.	COTTON YARN		9.10	M.Tons	18,886	18,104	104.3
ii.	COTTON FABRICS		4.13	"000" Sq. M	20,710	22,071	93.8
iii.	M.M.YARN		0.42	M.Tons	3,016	2,810	107.3
6.	<u>LEATHER TANNING</u>	30	0.07				
i.	UPPER LEATHER		0.07	"000" Sq. M.	581	465	124.9
7.	<u>COTTON GINNING & PRESSING</u>	85	3.30				
i.	C.G.& PRESSING		3.30	Bales	-	-	
8.	<u>PAPER & PAPER BOARD</u>	6	0.01				
i.	PRINTING PAPER		0.01	M.Tons	393	312	126.0
ii.	WRITTEN PAPER		0.01	M.Tons	331	444	74.5
iii.	PACKING & OTHER PAPER		0.01	M.Tons	1,844	1,681	109.7
iv.	ADVERTISING MATERIAL		0.01	M.Tons	-	-	
9.	<u>PHARMACEUTICALS</u>	78	6.37				
i.	TABLETS		1.67	"000" NOs.	1,394,613	1,480,224	94.2
ii.	LIQUIDS/SYRUPS		1.97	"000" Liters.	13,229	13,706	96.5
iii.	CAPSULES		1.36	"000" NOs.	206,823	219,581	94.2
iv.	INJECTIONS		1.22	"000" NOs.	71,494	75,212	95.1
v.	OINTMENT		0.15	KGs.	208,437	138,958	150.0
10.	<u>ACID, ALKALIES & SALT</u>	3	0.04				
i.	SULPHURIC ACID		0.04	M.Tons	2,716	2,631	103.2
11.	<u>FERTILIZER</u>	3	3.50				
i.	UREA		3.50	M.Tons	381,878	371,336	102.8
ii.	AMONIA		3.50	M.Tons	72,870	67,700	107.6
iii.	DAP*		3.50	M.Tons	115,229	110,537	104.2
12.	<u>PAINTS & VARNISH</u>	9	0.32				
i.	PAINTS		0.32	M.Tons	237	236	100.4
ii.	VARNISH		0.32	"000" Liters.	5	6	83.3
13.	<u>SOAP</u>	38	1.66				
i.	WASHING SOAP		1.66	M.Tons	9,284	10,017	92.7
ii.	DETERGENT POWDER		1.66	M.Tons	13,266	12,235	108.4
iii.	TOILET SOAP		1.66	M.Tons	3,323	3,246	102.4
iv.	TOOTH PASTE		1.66	M.Tons	815	701	116.3

Sr. No.	Industrial Sector/ Items	No. of Industrial Units as per CMI 2005-06	WEIGHT (2005-06)	Unit of Quantity	Production		Index of Production in Aug:2021 with July: 2021
					Aug:2021	July:2021	
14.	<u>PETROLEUM PRODUCTS</u>	2	9.32				
i.	L.P.G		9.32	"000" Liters.	3,113	2,075	150.0
ii.	NAPTHA SOLVENT		9.32	"000" Liters.	49,193	32,795	150.0
iii.	KEROSENE OIL		9.32	"000" Liters.	860	860	100.0
iv.	H.S.D		9.32	"000" Liters.	129,289	149,599	86.4
v.	FURNACE OIL		9.32	"000" Liters.	40,166	68,159	58.9
vi.	ASPHALT 80-100		9.32	"000" Liters.	684	718	95.3
vii.	ASPHALT 60-70		9.32	"000" Liters.	21,324	14,216	150.0
viii.	MOTOR SPRIT		9.32	"000" Liters.	33,923	33,654	100.8
ix.	JET FUEL		9.32	"000" Liters.	21,200	14,133	150.0
x.	LUBRICATING OIL		9.32	"000" Liters.	15,280	16,653	91.8
xi.	OTHERS		0.00	"000" Liters.	46,556	31,037	150.0
15.	<u>TYRES & TUBES</u>	4	0.41				
i.	MOTOR TYRE		0.41	Nos.	252,071	228,211	110.5
ii.	MOTOR TUBE		0.41	Nos.	28,498	26,093	109.2
16.	<u>CEMENT</u>	11	3.86				
i.	CEMENT		3.86	M.Tons	403,988	458,329	88.1
17.	<u>M.S.PRODUCTS</u>	28	4.88				
i.	M.S PRODUCTS		4.88	M.Tons	11,398	8,132	140.2
18.	<u>STEEL PRODUCTS</u>	2	1.02				
i.	STEEL PRODUCTS		1.02	M.Tons	2,452	1,845	132.9
19.	<u>SAFETY RAZOR BLADE</u>	1	0.40				
i.	SAFETY RAZOR BLAD		0.04	"000" NOs.	43,563	42,703	102.0
20.	<u>SEWING MACHINES</u>	3	0.25				
i.	SEWING MACHINES		0.25	Nos.	1,500	1,494	100.4
21.	<u>ELEC. APPLIANCES</u>	3	2.21				
i.	REFRIGERATORS		0.11	Nos.	74,323	87,439	85.0
ii.	AIR-CONDITIONERS		0.60	Nos.	44,304	45,168	98.1
iii.	DEEP FREEZERS		0.50	Nos.	5,613	6,603	85.0
iv.	WASHING MACHINES		0.50	Nos.	36,906	32,092	115.0
v.	MICROWAVE OVEN		0.50	Nos.	44,272	52,085	85.0
22.	<u>AUTOMOBILE</u>	17	11.15				
i.	TRUCKS		2.71	Nos.	510	270	188.9
ii.	BUSES		0.77	Nos.	42	10	420.0
iii.	LCV'S		2.50	Nos.	2,313	2,180	106.1
iv.	MOTOR CYCLES		2.06	Nos.	144,621	133,849	108.0
v.	TRACTORS		0.25	Nos.	4,663	4,600	101.4
vi.	CARS		0.50	Nos.	17,393	15,325	113.5
vii.	VANS & JEEPS		1.18	Nos.	1,050	1,328	79.1
viii.	THREE WHEELERS		1.18	Nos.	3,069	1,205	254.7
	Grand Total	537	70.43				

Table 3: Production of Selected Items Pertaining to Large-Scale Manufacturing Sector, August-2021 Vs August -2020

Sr. No.	Industrial Sector/ Items	No. of Industrial Units as per CMI 2005-06	WEIGHT (2005-06)	Unit of Quantity	Production		Index of Production in Aug:2021 with Aug:2020
					Aug:2021	Aug:2020	
1.	<u>VEGETABLE GHEE</u>	35	1.61				
i.	VEGETABLE GHEE		1.11	M.Tons	26,300	34,816	75.5
ii.	COOKING OIL		0.50	M.Tons	20,004	15,706	127.4
2.	<u>SUGAR</u>	26	4.32				
i.	SUGAR		4.32	M.Tons	-	-	
3.	<u>TEA</u>	7	1.23				
i.	TEA		1.23	M.Tons	5,576	3,773	147.8
4.	<u>BEVERAGES</u>	13	0.85				
i.	BEVERAGES		0.85	"000" NOs.	75,508	92,863	81.3
ii.	WATER		0.85	"000" NOs.	25,170	15,277	164.8
5.	<u>COTTON TEXTILE</u>	133	13.65				
i.	COTTON YARN		9.10	M.Tons	18,886	17,770	106.3
ii.	COTTON FABRICS		4.13	"000" Sq. M	20,710	15,965	129.7
iii.	M.M.YARN		0.42	M.Tons	3,016	687	439.0
6.	<u>LEATHER TANNING</u>	30	0.07				
i.	UPPER LEATHER		0.07	"000" Sq. M.	581	422	137.7
7.	<u>COTTON GINNING & PRESSING</u>	85	3.30				
i.	C.G.& PRESSING		3.30	Bales	-	-	
8.	<u>PAPER & PAPER BOARD</u>	6	0.01				
i.	PRINTING PAPER		0.01	M.Tons	393	253	155.3
ii.	WRITTEN PAPER		0.01	M.Tons	331	207	159.9
iii.	PACKING & OTHER PAPER		0.01	M.Tons	1,844	1,289	143.1
iv.	ADVERTISING MATERIAL		0.01	M.Tons	-	17	
9.	<u>PHARMACEUTICALS</u>	78	6.37				
i.	TABLETS		1.67	"000" NOs.	1,394,613	1,823,005	76.5
ii.	LIQUIDS/SYRUPS		1.97	"000" Liters.	13,229	4,574	289.2
iii.	CAPSULES		1.36	"000" NOs.	206,823	260,057	79.5
iv.	INJECTIONS		1.22	"000" NOs.	71,494	98,594	72.5
v.	OINTMENT		0.15	KGs.	208,437	204,477	101.9
10.	<u>ACID, ALKALIES & SALT</u>	3	0.04				
i.	SULPHURIC ACID		0.04	M.Tons	2,716	2,001	135.7
11.	<u>FERTILIZER</u>	3	3.50				
i.	UREA		3.50	M.Tons	381,878	229,284	166.6
ii.	AMONIA		3.50	M.Tons	72,870	44,386	164.2
iii.	DAP*		3.50	M.Tons	115,229	73,225	157.4
12.	<u>PAINTS & VARNISH</u>	9	0.32				
i.	PAINTS		0.32	M.Tons	237	63	376.2
ii.	VARNISH		0.32	"000" Liters.	5	278	1.8
13.	<u>SOAP</u>	38	1.66				
i.	WASHING SOAP		1.66	M.Tons	9,284	6,976	133.1
ii.	DETERGENT POWDER		1.66	M.Tons	13,266	11,830	112.1
iii.	TOILET SOAP		1.66	M.Tons	3,323	1,941	171.2
iv.	TOOTH PASTE		1.66	M.Tons	815	726	112.3

Sr. No.	Industrial Sector/ Items	No. of Industrial Units as per CMI 2005-06	WEIGHT (2005-06)	Unit of Quantity	Production		Index of Production in Aug:2021 with Aug:2020
					Aug:2021	Aug:2020	
14.	<u>PETROLEUM PRODUCTS</u>	2	9.32				
i.	L.P.G		9.32	"000" Liters.	3,113	1,534	203.0
ii.	NAPHTHA SOLVENT		9.32	"000" Liters.	49,193	12,212	402.8
iii.	KEROSENE OIL		9.32	"000" Liters.	860	-	
iv.	H.S.D		9.32	"000" Liters.	129,289	126,816	102.0
v.	FURNACE OIL		9.32	"000" Liters.	40,166	47,350	84.8
vi.	ASPHALT 80-100		9.32	"000" Liters.	-	-	
vii.	ASPHALT 60-70		9.32	"000" Liters.	21,324	2,055	1037.7
viii.	MOTOR SPRIT		9.32	"000" Liters.	33,923	20,508	165.4
ix.	JET FUEL		9.32	"000" Liters.	21,200	9,179	231.0
x.	LUBRICATING OIL		9.32	"000" Liters.	15,280	4,025	379.6
xi.	OTHERS		0.00	"000" Liters.	46,556	972	4788.7
15.	<u>TYRES & TUBES</u>	4	0.41				
i.	MOTOR TYRE		0.41	Nos.	252,071	162,874	154.8
ii.	MOTOR TUBE		0.41	Nos.	28,498	17,811	160.0
16.	<u>CEMENT</u>	11	3.86				
i.	CEMENT		3.86	M.Tons	403,988	280,696	143.9
17.	<u>M.S.PRODUCTS</u>	28	4.88				
i.	M.S PRODUCTS		4.88	M.Tons	11,398	8,212	138.8
18.	<u>STEEL PRODUCTS</u>	2	1.02				
i.	STEEL PRODUCTS		1.02	M.Tons	2,452	-	
19.	<u>SAFETY RAZOR BLADE</u>	1	0.40				
i.	SAFETY RAZOR BLAD		0.04	"000" NOs.	43,563	63,960	68.1
20.	<u>SEWING MACHINES</u>	3	0.25				
i.	SEWING MACHINES		0.25	Nos.	1,500	1,430	104.9
21.	<u>ELEC. APPLIANCES</u>	3	2.21				
i.	REFRIGERATORS		0.11	Nos.	74,323	34,723	214.0
ii.	AIR-CONDITIONERS		0.60	Nos.	44,304	10,148	436.6
iii.	DEEP FREEZERS		0.50	Nos.	5,613	1,930	290.8
iv.	WASHING MACHINES		0.50	Nos.	36,906	20,277	182.0
v.	MICROWAVE OVEN		0.50	Nos.	44,272	26,372	167.9
22.	<u>AUTOMOBILE</u>	17	11.15				
i.	TRUCKS		2.71	Nos.	510	284	179.6
ii.	BUSES		0.77	Nos.	42	29	144.8
iii.	LCV'S		2.50	Nos.	2,313	1,138	203.3
iv.	MOTOR CYCLES		2.06	Nos.	144,621	135,812	106.5
v.	TRACTORS		0.25	Nos.	4,663	3,355	139.0
vi.	CARS		0.50	Nos.	17,393	7,177	242.3
vii.	VANS & JEEPS		1.18	Nos.	1,050	512	205.1
viii.	THREE WHEELERS		1.18	Nos.	3,069	4,443	69.1
	Grand Total	537	70.43				

Table 4: Production of Selected Items Pertaining to Large-Scale Manufacturing Sector,
2021-22 (Jul to Aug) Vs 2020 (Jul to Aug)

Sr. No.	Industrial Sector/ Items	No. of Industrial Units as per CMI 2005-06	WEIGHT (2005-06)	Unit of Quantity	Production		Index of Production in 2021-22 (Jul-Aug) with 2020-21 (Jul-Aug)
					2021-22 (Jul-Aug)	2020-21 (Jul-Aug)	
1.	<u>VEGETABLE GHEE</u>	35	1.61				
i.	VEGETABLE GHEE		1.11	M.Tons	55,571	69,743	79.7
ii.	COOKING OIL		0.50	M.Tons	40,921	30,815	132.8
2.	<u>SUGAR</u>	26	4.32				
i.	SUGAR		4.32	M.Tons	-	-	
3.	<u>TEA</u>	7	1.23				
i.	TEA		1.23	M.Tons	11,647	7,622	152.8
4.	<u>BEVERAGES</u>	13	0.85				
i.	BEVERAGES		0.85	"000" NOs.	159,526	192,148	83.0
ii.	WATER		0.85	"000" NOs.	50,420	33,615	150.0
5.	<u>COTTON TEXTILE</u>	133	13.65				
i.	COTTON YARN		9.10	M.Tons	36,990	36,255	102.0
ii.	COTTON FABRICS		4.13	"000" Sq. M	42,781	33,287	128.5
iii.	M.M.YARN		0.42	M.Tons	5,826	1,125	517.9
6.	<u>LEATHER TANNING</u>	30	0.07				
i.	UPPER LEATHER		0.07	"000" Sq. M.	1,046	1,025	102.0
7.	<u>COTTON GINNING & PRESSING</u>	85	3.30				
i.	C.G.& PRESSING		3.30	Bales	-	-	
8.	<u>PAPER & PAPER BOARD</u>	6	0.01				
i.	PRINTING PAPER		0.01	M.Tons	705	506	139.3
ii.	WRITTEN PAPER		0.01	M.Tons	775	207	374.4
iii.	PACKING & OTHER PAPER		0.01	M.Tons	3,525	2,820	125.0
iv.	ADVERTISING MATERIAL		0.01	M.Tons	-	40	
9.	<u>PHARMACEUTICALS</u>	78	6.37				
i.	TABLETS		1.67	"000" NOs.	2,874,837	3,848,948	74.7
ii.	LIQUIDS/SYRUPS		1.97	"000" Liters.	26,935	11,348	237.4
iii.	CAPSULS		1.36	"000" NOs.	426,404	536,819	79.4
iv.	INJECTIONS		1.22	"000" NOs.	146,706	223,067	65.8
v.	OINTMENT		0.15	KGs.	347,395	425,908	81.6
10.	<u>ACID, ALKALIES & SALT</u>	3	0.04				
i.	SULPHURIC ACID		0.04	M.Tons	5,347	4,507	118.6
11.	<u>FERTILIZER</u>	3	3.50				
i.	UREA		3.50	M.Tons	753,214	462,968	162.7
ii.	AMONIA		3.50	M.Tons	140,570	87,983	159.8
iii.	DAP*		3.50	M.Tons	225,766	148,207	152.3
12.	<u>PAINTS & VARNISH</u>	9	0.32				
i.	PAINTS		0.32	M.Tons	473	124	381.5
ii.	VARNISH		0.32	"000" Liters.	11	487	2.3
13.	<u>SOAP</u>	38	1.66				
i.	WASHING SOAP		1.66	M.Tons	19,301	12,846	150.2
ii.	DETERGENT POWDER		1.66	M.Tons	25,501	26,355	96.8
iii.	TOILET SOAP		1.66	M.Tons	6,569	3,738	175.7
iv.	TOOTH PASTE		1.66	M.Tons	1,516	1,529	99.1

Sr. No.	Industrial Sector/ Items	No. of Industrial Units as per CMI 2005-06	WEIGHT (2005-06)	Unit of Quantity	Production		Index of Production in 2021-22 (Jul-Aug) with 2020-21 (Jul-Aug)
					2021-22 (Jul-Aug)	2020-21(Jul-Aug)	
14.	<u>PETROLEUM PRODUCTS</u>	2	9.32				
i.	L.P.G		9.32	"000" Liters.	5,188	2,426	213.9
ii.	NAPHTHA SOLVENT		9.32	"000" Liters.	81,988	28,644	286.2
iii.	KEROSENE OIL		9.32	"000" Liters.	1,720	550	312.7
iv.	H.S.D		9.32	"000" Liters.	278,888	254,764	109.5
v.	FURNACE OIL		9.32	"000" Liters.	108,325	93,543	115.8
vi.	ASPHALT 80-100		9.32	"000" Liters.	1,402	590	237.6
vii.	ASPHALT 60-70		9.32	"000" Liters.	35,540	6,630	536.1
viii.	MOTOR SPRIT		9.32	"000" Liters.	67,577	44,525	151.8
ix.	JET FUEL		9.32	"000" Liters.	35,333	18,819	187.8
x.	LUBRICATING OIL		9.32	"000" Liters.	31,933	10,332	309.1
xi.	OTHERS		0.00	"000" Liters.	77,593	2,581	3006.1
15.	<u>TYRES & TUBES</u>	4	0.41				
i.	MOTOR TYRE		0.41	Nos.	480,282	371,261	129.4
ii.	MOTOR TUBE		0.41	Nos.	54,591	35,595	153.4
16.	<u>CEMENT</u>	11	3.86				
i.	CEMENT		3.86	M.Tons	862,317	741,405	116.3
17.	<u>M.S.PRODUCTS</u>	28	4.88				
i.	M.S PRODUCTS		4.88	M.Tons	19,530	15,816	123.5
18.	<u>STEEL PRODUCTS</u>	2	1.02				
i.	STEEL PRODUCTS		1.02	M.Tons	4,297	-	
19.	<u>SAFETY RAZOR BLADE</u>	1	0.40				
i.	SAFETY RAZOR BLAD		0.04	"000" NOs.	86,266	123,479	69.9
20.	<u>SEWING MACHINES</u>	3	0.25				
i.	SEWING MACHINES		0.25	Nos.	2,994	2,945	101.7
21.	<u>ELEC. APPLIANCES</u>	3	2.21				
i.	REFRIGERATORS		0.11	Nos.	161,762	75,353	214.7
ii.	AIR-CONDITIONERS		0.60	Nos.	89,472	23,473	381.2
iii.	DEEP FREEZERS		0.50	Nos.	12,216	6,136	199.1
iv.	WASHING MACHINES		0.50	Nos.	68,998	46,155	149.5
v.	MICROWAVE OVEN		0.50	Nos.	96,357	55,928	172.3
22.	<u>AUTOMOBILE</u>	17	11.15				
i.	TRUCKS		2.71	Nos.	780	529	147.4
ii.	BUSES		0.77	Nos.	52	78	66.7
iii.	LCV'S		2.50	Nos.	4,493	2,450	183.4
iv.	MOTOR CYCLES		2.06	Nos.	278,470	377,837	73.7
v.	TRACTORS		0.25	Nos.	9,263	6,672	138.8
vi.	CARS		0.50	Nos.	32,718	15,457	211.7
vii.	VANS & JEEPS		1.18	Nos.	2,378	897	265.1
viii.	THREE WHEELERS		1.18	Nos.	4,274	9,334	45.8
	Grand Total	537	70.43				

Table 5: Employment in Selected Large-Scale Manufacturing Sector, August-2021 Vs July-2021

Sr. No.	Industrial Sector/ Items	No. of Industrial Units as per CMI 2005-06	Total Employees		Production Worker	
			Aug:2021	July:2021	Aug:2021	July:2021
1	<u>VEGETABLE GHEE</u>	35	2,018	2,000	1,529	1,532
2	<u>SUGAR</u>	26	9,067	9,048	5,806	5,797
3	<u>TEA</u>	7	3,047	2,968	2,606	2,532
4	<u>BEVERAGES</u>	13	4,043	4,052	675	1,596
5	<u>COTTON TEXTILE</u>	133	53,224	57,424	43,037	45,034
6	<u>LEATHER TANNING</u>	30	6,593	6,585	5,523	5,520
7	<u>PAPER & PAPER BOARD</u>	6	1,954	1,920	1,394	1,374
8	<u>PHARMACEUTICALS</u>	78	15,261	15,229	5,118	5,133
9	<u>ACID, ALKALIES & SALT</u>	3	30	30	21	21
10	<u>FERTILIZER</u>	3	1,700	1,355	1,326	1,053
11	<u>PAINTS & VARNISH</u>	9	109	109	67	68
12	<u>SOAP</u>	38	1,772	1,756	1,514	1,496
13	<u>PETROLEUM PRODUCTS</u>	2	1,180	1,180	981	981
14	<u>TYRES & TUBES</u>	4	5,912	5,868	4,124	4,108
15	<u>CEMENT</u>	11	2,371	2,355	1,093	1,518
16	<u>STEEL PRODUCTS</u>	2	198	224	130	114
17	<u>M.S PRODUCTS</u>	28	865	1,256	676	860
18	<u>SAFETY RAZOR BLAD</u>	1	278	279	258	259
19	<u>SEWING MACHINES</u>	3	273	273	236	236
20	<u>ELEC. APPLIANCES</u>	3	1,057	1,057	819	894
21	<u>AUTOMOBILE</u>	17	12,849	12,838	7,948	7,968
22	<u>STORAGE BATTERIES</u>	4	2,272	2,573	2,275	2,273
	Grand Total	456	126,071	130,378	87,156	90,367

Table 6: Employment in Selected Large-Scale Manufacturing Sector, August-2021 Vs August-2020

Sr. No.	Industrial Sector/ Items	No. of Industrial Units as per CMI 2005-06	Employees		Production Worker	
			Aug:2021	Aug:2020	Aug:2021	Aug:2020
1	<u>VEGETABLE GHEE</u>	35	2,018	2,679	1,529	1,245
2	<u>SUGAR</u>	26	9,067	5,714	5,806	5,197
3	<u>TEA</u>	7	3,047	3,134	2,606	2,679
4	<u>BEVERAGES</u>	13	4,043	3,113	675	1,152
5	<u>COTTON TEXTILE</u>	133	53,224	53,171	43,037	40,981
6	<u>LEATHER TANNING</u>	30	6,593	6,721	5,523	5,627
7	<u>PAPER & PAPER BOARD</u>	6	1,954	2,196	1,394	1,548
8	<u>PHARMACEUTICALS</u>	78	15,261	6,256	5,118	3,032
9	<u>ACID, ALKALIES & SALT</u>	3	30	18	21	13
10	<u>FERTILIZER</u>	3	1,700	984	1,326	821
11	<u>PAINTS & VARNISH</u>	9	109	106	67	50
12	<u>SOAP</u>	38	1,772	1,993	1,514	1,659
13	<u>PETROLEUM PRODUCTS</u>	2	1,180	437	981	338
14	<u>TYRES & TUBES</u>	4	5,912	5,652	4,124	4,020
15	<u>CEMENT</u>	11	2,371	5,201	1,093	2,328
16	<u>STEEL PRODUCTS</u>	2	198	-	130	-
17	<u>M.S PRODUCTS</u>	28	865	1,091	676	857
18	<u>SAFETY RAZOR BLAD</u>	1	278	288	258	246
19	<u>SEWING MACHINES</u>	3	273	410	236	354
20	<u>ELECTRICAL APPLIANCES</u>	3	1,057	750	819	663
21	<u>AUTOMOBILE</u>	17	12,849	15,956	7,948	7,610
22	<u>STORAGE BATTERIES</u>	4	2,272	1,648	2,275	1,645
	Grand Total	456	126,071	117,518	87,156	82,063

*Table 7: Average Monthly Employment in Selected Large Scale Manufacturing Sector,
2021 (Jul to Aug) Vs 2020 (Jul to Aug)*

Sr. No.	Industrial Sector/ Items	No. of Industrial Units as per CMI 2005-06	Average Monthly Total Employment		Average Monthly Production Worker	
			(Jul-Aug) 2021-22	(Jul-Aug) 2020-21	(Jul-Aug) 2021-22	(Jul-Aug) 2020-21
1	<u>VEGETABLE GHEE</u>	35	2,009	2,701	1,530	1,266
2	<u>SUGAR</u>	26	9,058	5,645	5,801	5,199
3	<u>TEA</u>	7	3,008	3,113	2,569	2,657
4	<u>BEVERAGES</u>	13	4,047	3,117	1,136	1,093
5	<u>COTTON TEXTILE</u>	133	55,324	53,229	44,036	41,050
6	<u>LEATHER TANNING</u>	30	6,589	6,750	5,522	5,648
7	<u>PAPER & PAPER BOARD</u>	6	1,937	2,169	1,384	1,536
8	<u>PHARMACEUTICALS</u>	78	15,261	6,259	5,118	3,033
9	<u>ACID, ALKALIES & SALT</u>	3	30	18	21	13
10	<u>FERTILIZER</u>	3	1,527	985	1,190	810
11	<u>PAINTS & VARNISH</u>	9	109	106	68	53
12	<u>SOAP</u>	38	1,764	2,030	1,505	1,689
13	<u>PETROLEUM PRODUCTS</u>	2	1,180	437	981	338
14	<u>TYRES & TUBES</u>	4	5,890	5,666	4,116	4,030
15	<u>CEMENT</u>	11	2,363	5,205	1,306	2,329
16	<u>STEEL PRODUCTS</u>	1	211	-	122	-
17	<u>M.S PRODUCTS</u>	28	1,060	1,069	768	818
18	<u>SAFETY RAZOR BLAD</u>	1	279	288	259	247
19	<u>SEWING MACHINES</u>	3	273	410	236	354
20	<u>ELECTRICAL APPLIANCES</u>	3	1,057	750	819	663
21	<u>AUTOMOBILE</u>	17	12,844	15,956	7,958	7,610
22	<u>STORAGE BATTERIES</u>	4	2,423	1,757	2,274	1,645
	Grand Total	455	128,241	117,659	88,717	82,079

Annexure – A Proforma/ Questionnaire



**GOVERNMENT OF SINDH
PLANNING & DEVELOPMENT DEPARTMENT
BUREAU OF STATISTICS**

www.sindhbos.gov.pk

Street-13, Block-8, Kehkashan Clifton, Karachi-75600, P.O.Box# 3879

021-99251259 021-35296415 m.kazimjafri@hotmail.com

The information supplied will be kept strictly confidential and will be used for statistical purpose only.	REPORT FOR	
	MONTH	YEAR

MONTHLY SURVEY OF INDUSTRIAL PRODUCTION AND EMPLOYMENT IN SINDH.

INDUSTRY CODE

Estb: Code

LOCATION CODE

PART-I GENERAL PARTICULARS

- i) Name and Address of the Establishment _____
- ii) Name, Designation, Telephone, Cell and _____
- Fax# of the person to be contacted. _____
- iii) Website and E-mail Address _____

PART-II PRODUCTION DATA

S.No	Major Items of Production	Code	Unit of Quantity	Code	Previous Month	Current Month	Reasons of Growth/ Decline

PART-III WORKING DAYS AND EMPLOYMENT

- i) No. of days establishment worked _____
- ii) No. of Production workers. Male _____ Female _____ Total _____
- iii) No. of Non production workers Male _____ Female _____ Total _____
- TOTAL (ii + iii)** Male _____ Female _____ Total _____

Note: Production Workers mean those who are directly associated with production. It includes those engaged in manufacturing, assembling packing repairing etc. Working Supervisor should also be included, Non production worker mean those who are not directly associated with production it includes Administrative Clerical and Services Staff like Chowkidar, Driver and Sweeper.

Signature _____
Designation _____
Date _____

Annexure – B Important Definitions

Large Scale Manufacturing Industries

Establishments where 10 or more employees are working are called large Scale Manufacturing Industries.

Employees

Employees mean all persons whether part time or full time who work in the establishments and receive remuneration in cash or in kind. Working proprietors, unpaid family workers and home workers are excluded from the category of employee. There are two types of employees Production Workers and Non-Production Workers.

- **Production Workers**

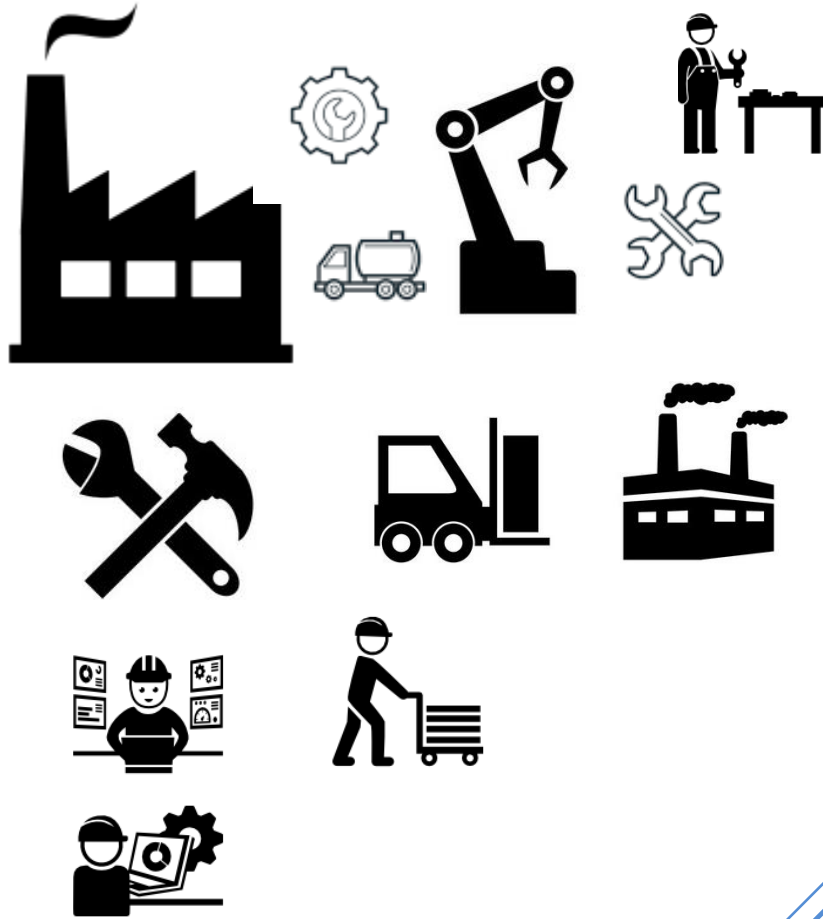
Are engaged in work directly associated with production like manufacturing, assembling, packing, repairing etc. Working supervisors and persons engaged for repairs and maintenance are also included.

- **Non-Production Workers**

Include administrative and professional employees, white-collar office employees, drivers, watchmen/guards, peons, sweepers, office boys, etc.

Annexure – C Data Users

- Ministry of Industries & Production, Government of Pakistan.
- Planning & Development Department, Government of Sindh.
- Pakistan Bureau of Statistics, Government of Pakistan.
- State Bank of Pakistan.
- Provincial Bureaus of Statistics, Punjab, KPK and Baluchistan.
- Research & Training Wing, Planning & Development Department, Government of Sindh.



(Industries Section)
Bureau of Statistics
Planning & Development
Department
Government of Sindh
m.kazimjafri@hotmail.com

ST:13 Block-8 Kehkashan Clifton, Ch. Kahliqz-zaman road, Karachi
Ph. 021-99251259, Email: ddindustries.sindhbos@gmail.com
www.sindhbos.gov.pk