

GOVERNMENT OF SINDH
PLANNING & DEVELOPMENT DEPARTMENT
BUREAU OF STATISTICS



June, 2021

Industries Section, BOS

MONTHLY SURVEY OF
INDUSTRIAL PRODUCTION
& EMPLOYEMENT
IN SINDH



FOR OFFICIAL USE ONLY

Sindh Monthly Survey of Industrial Production & Employment (MIPE)

June, 2021



Bureau of Statistics
Planning & Development Department
Government of Sindh

www.sindhbos.gov.pk
ddindustries.sindhbos.gov.pk

Preface

Monthly Survey of Industrial Production and Employment (MIPE) is being conducted/published by Sindh Bureau of Statistics on regular basis. This report provides important statistics in respect of industrial production & employment of large Scale Manufacturing (LSM) industries in Sindh.

This report contains information on 62 items manufactured in 22 selected large scale industrial sectors covering 537 industrial establishments (selection on the basis of CMI 2005-06). These industries account for 70.6% of total value added of large scale manufacturing sector in Sindh.

MIPE Report provides information regarding General Index and Quantum Index of Manufacturing (QIM) to base period 2005-06, and analytical analysis on the current status of production and employment in manufacturing sector.

All the efforts are made to improve the industrial statistics and hope this report would prove useful to policy makers, planners, researchers and other data users. Suggestion/recommendations from the users will always be welcomed and appreciated.

Director General
Bureau of Statistics
Planning & Development Department
Government of Sindh

Contents

<i>Preface</i>	<i>II</i>
<i>Contents</i>	<i>III</i>
<i>List of Tables</i>	<i>IV</i>
<i>List of Figures</i>	<i>IV</i>
<i>List of Equations</i>	<i>IV</i>
<i>MIPE Team (Industries Section)</i>	<i>V</i>
<i>Introduction</i>	<i>1</i>
<i>1. Questionnaire/ Proforma</i>	<i>2</i>
<i>2. Methodology</i>	<i>2</i>
<i>3. Editing</i>	<i>2</i>
<i>4. Quantum Index of Manufacturing (QIM)</i>	<i>3</i>
<i>Analysis</i>	<i>4</i>
<i>Production and Employment Data</i>	<i>6</i>
<i>Annexure – A: Proforma/ Questionnaire</i>	<i>15</i>
<i>Annexure – B: Important Definitions</i>	<i>16</i>
<i>Annexure – C: Data Users</i>	<i>17</i>

List of Tables

TABLE 1: SERIES OF QUANTUM INDEX OF MANUFACTURING (QIM) AT (2005-06=100) _____	4
TABLE 2: PRODUCTION OF SELECTED ITEMS PERTAINING TO LARGE-SCALE MANUFACTURING SECTOR, JUNE-2021 VS MAY-2021 _____	6
TABLE 3: PRODUCTION OF SELECTED ITEMS PERTAINING TO LARGE-SCALE MANUFACTURING SECTOR, JUNE-2021 VS JUNE-2020 _____	8
TABLE 4: PRODUCTION OF SELECTED ITEMS PERTAINING TO LARGE-SCALE MANUFACTURING SECTOR, _____	10
TABLE 5: EMPLOYMENT IN SELECTED LARGE-SCALE MANUFACTURING SECTOR, JUN-2021 VS MAY -2021 _____	12
TABLE 6: EMPLOYMENT IN SELECTED LARGE-SCALE MANUFACTURING SECTOR, JUN-2021 VS JUN -2020 _____	13
TABLE 7: AVERAGE MONTHLY EMPLOYMENT IN SELECTED LARGE SCALE MANUFACTURING SECTOR, _____	14

List of Figures

FIGURE 1: TREND OF QUANTUM INDEX OF LARGE SCALE MANUFACTURING INDUSTRIES AT BASE YEAR 2005-06 _____	5
FIGURE 2: TREND OF AVERAGE MONTHLY EMPLOYMENT IN LARGE SCALE MANUFACTURING INDUSTRIES _____	5

List of Equations

EQUATION 1 LASPAYER'S INDEX _____	3
-----------------------------------	---

MIPE Team (Industries Section)

Team Lead:

Muhammad Kazim Jafri

Deputy Director

Team Members:

1. Ms. Rukhsana Aziz

Statistical Officer

Support in Data Collection and Compilation:

1. Mr. Syed Younus Bukhari

Jr. Stenographer

2. Mr. Muhammad Akram Bhatti

Statistical Computer

Introduction

Industrial Statistics is very essential tool to track industrial growth and implementation of policies in right directions. This sector has great importance for economic development of country. As per the composition of Pakistan's economy in 2019-20, Agriculture Sector is 19.31%, Industries Sector is 19.29% and Services Sector is 61.4%.

According to the Pakistan Bureau of Statistics, for fiscal year 2020 followed partial lockdown situation faced by industrial sector in the country due to COVID-19. A significant impact has been observed in the manufacturing sector, particularly Large-Scale Manufacturing and Small-Scale Manufacturing. In the industrial sector, 2.64% negative provincial growth has been observed (PBS). From the share of industrial sector 12.48% are manufacturing and more specifically 9.5% is Large Scale Manufacturing (LSM) Sector. The role of Sindh province in the Large Scale Manufacturing is very vital. However, Sindh QIM's trend of overall manufacturing index is on declining side which mainly caused by COVID-19. As the Karachi is the largest metropolitan city of Pakistan, according to Karachi Chamber of Commerce and Industry (KCCI) it produces 15% with an annual Gross Domestic Product (GDP). Sindh Business Register (SBR), 2017 established by Sindh Bureau of Statistics, Planning & Development Department during the field operation CMI 2015-16 started from January, 2017 shows that 67% establishments/ factories are located in Karachi Division and remaining 33% are located in other districts of Sindh.

For the timely and quality industrial statistics, Sindh Bureau of Statistics, Planning & Development Department has been conducting Monthly Survey of Industrial Production and Employment (MIPE). This survey report includes 62 items manufactured in 22 large scale Industrial sectors from 537 establishments/ factories in Sindh. The sample of 537 firms was drawn from the last Census of Manufacturing Industries (CMI), 2005-06 and these industries account for 70.6% of total value added in terms of production during 2005-06, CMI. However, the recent CMI 2015-16 has been conducted by PBS, as it will be published that will be used as base year and QIM base year will be shifted from 2005-06 to 2015-16. In addition to collection, compilation, tabulation and processing of manufacturing data, Bureau of Statistics also computes monthly Quantum Index of Manufacturing by using the weights of production. The quantum index is an essential indicator to gauge to aggregate monthly production of province.

1. Questionnaire/ Proforma

A questionnaire/ Proforma is a research instrument consisting of a series of questions and other prompts for the purpose of gathering information from respondents. A pre-tested questionnaire is used for the data collection of industrial inputs related to employment and production, attached at **Annex-A**.

2. Methodology

The basic method of data collection for Sindh MIPE is the posting/ mailing of MIPE Questionnaires. More than 70% monthly returns are received to this Bureau through mail from industrial units. The non-responding or remaining establishments are visited by the officers/ officials of this Bureau, besides this the method of emailing, fax and telephonic approach are also used for collection of monthly returns and increase the response rate.

3. Editing

All the received returns are scrutinized for accuracy and consistency with previous data by the Industries Section of this Bureau. As per *Unit Calculation Sheet* different units of similar products are converted into the reporting units. In case of huge discrepancy between current and previous returns the factory management is approached to rectify that figures. In the absence establishment's return or non-availability of concerned person the average production of last month or the last month information is repeated for equivalence.

4. Quantum Index of Manufacturing (QIM)

A quantum index is an index based on quantity units of goods such as number or weight. Sindh bureau of Statistics is computing Index on Industrial Production using 2005-06 as base year. Index Series is generated by using Laspayer's Index.

$$QIM = \frac{\sum_{i=1}^n \frac{q_{im}}{q_{i0}} w_i}{\sum_{i=1}^n w_i} \times 100$$

Equation 1 Laspayer's Index

q_{im} = Production of i^{th} item during the current month

q_{i0} = Average Production of the same i^{th} item in the base period (2005-06)

w_i = Weight of the i^{th} item in the base period (2005-06)

$\sum_{i=1}^n w_i$ = Total Weight of 22 large scale industrial sectors covering 537 establishments in the base period with respect to the total value added of all the industries covered in CMI in the base year 2005-06.

Analysis

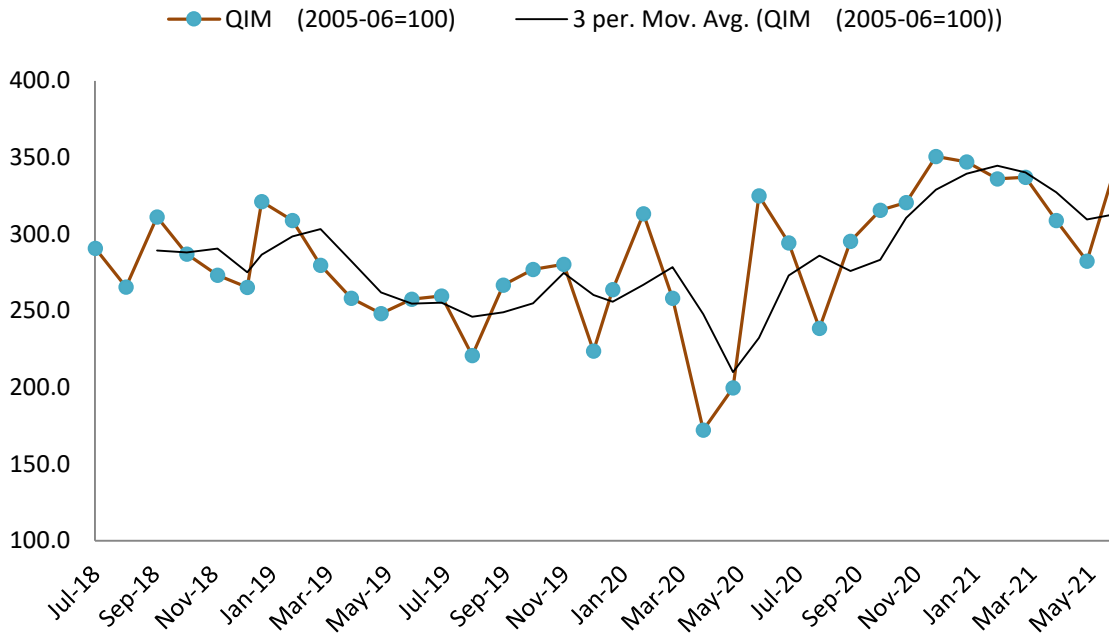
Summary findings on the basis of Index of Industrial Production are as follows:

- Overall Production in June, 2021 is observed significantly increased by 21% in current month as compared to last month.
- Production in June, 2021 is significantly increased by 43.7% as compared to corresponding month of last year (i.e. June, 2020). Last year's production down significantly due to complete lock down in province during same period except food related industries.
- Increasing trend followed in overall cumulative production from July to June (2020-21) by 20.5% as compared to the period of July to June (2019-20).
- Employment during June, 2021 is almost same as compared to previous month (i.e. May, 2021).
- Employment during June, 2021 reported 12.3% which is significantly high in comparison with June, 2020.
- Average monthly employment during the period of July-June (2020-21) is 1.2% lower than the corresponding period of July-June (2019-20).

Table 1: Series of Quantum Index of Manufacturing (QIM) at (2005-06=100)

Month/ Year	2015-16	2016-17	2017-18	2018-19	2019-20	2020-21
July	255.7	284.0	327.0	290.8	259.7	294.2
August	266.0	287.7	336.4	265.5	220.9	238.5
September	274.2	281.5	330.9	311.3	266.7	295.4
October	247.0	291.4	355.7	287.0	277.0	315.6
November	283.7	317.1	343.2	273.3	280.3	320.5
December	261.7	302.8	341.5	265.2	223.7	350.6
January	297.4	286.1	374.0	321.3	263.8	347.2
February	293.2	283.3	324.5	309.0	313.2	336.1
March	253.9	275.6	341.4	279.7	258.2	337.1
April	250.6	276.8	338.5	258.2	172.1	308.9
May	254.4	283.9	311.3	248.2	199.8	282.5
June	259.0	258.1	307.4	257.6	324.9	341.9
Average (Geometric Mean)	265.9	285.4	335.5	279.7	251.3	312.4

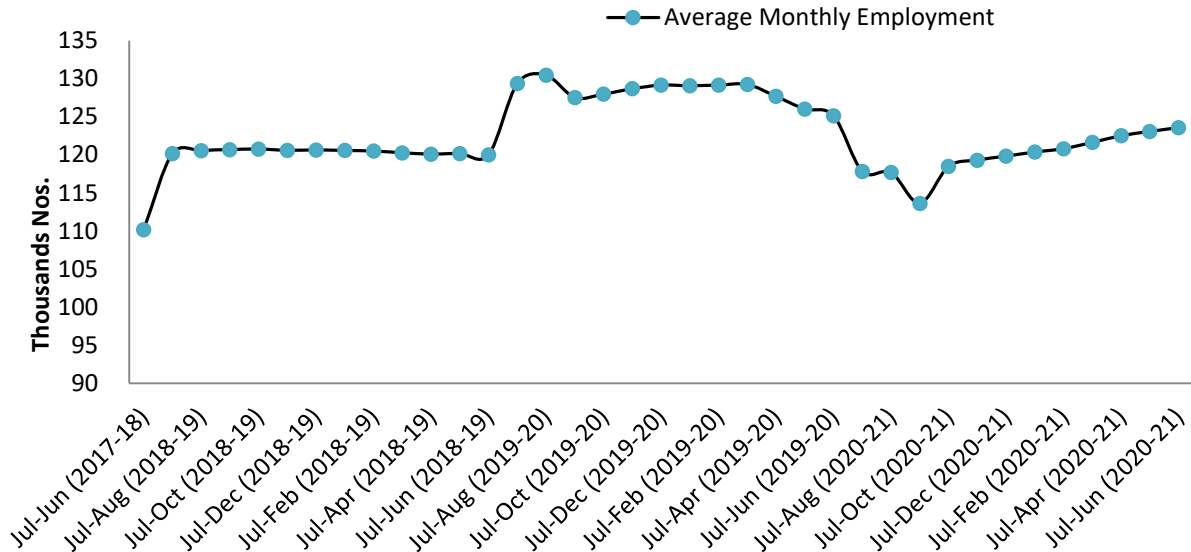
Figure 1: Trend of Quantum Index of Large Scale Manufacturing Industries at base year 2005-06



After a consecutive decreased of last five months in Quantum Index, significant increment reported in recent month. Mostly items of automobile, electrical appliances and petroleum products increased massively.

Figure 2: Trend of Average Monthly Employment in Large Scale Manufacturing Industries

The employment is showing a steady upward trend since October, 2020. Similar trend may be continued in future as well.



Production and Employment Data

Table 2: Production of Selected Items Pertaining to Large-Scale Manufacturing Sector, June-2021 Vs May-2021

Sr. No.	Industrial Sector/ Items	No. of Industrial Units as per CMI 2005-06	WEIGHT (2005-06)	Unit of Quantity	Production		Index of Production in Jun:2021 with May: 2021
					Jun:2021	May:2021	
1.	<u>VEGETABLE GHEE</u>	35	1.61				
i.	VEGETABLE GHEE		1.11	M.Tons	30,812	32,433	95.0
ii.	COOKING OIL		0.50	M.Tons	17,913	18,690	95.8
2.	<u>SUGAR</u>	26	4.32				
i.	SUGAR		4.32	M.Tons	-	-	
3.	<u>TEA</u>	7	1.23				
i.	TEA		1.23	M.Tons	5,031	4,512	111.5
4.	<u>BEVERAGES</u>	13	0.85				
i.	BEVERAGES		0.85	"000" NOs.	82,214	103,340	79.6
ii.	WATER*		0.85	"000" NOs.	33,417	18,741	178.3
5.	<u>COTTON TEXTILE</u>	133	13.65				
i.	COTTON YARN		9.10	M.Tons	17,242	17,480	98.6
ii.	COTTON FABRICS		4.13	"000" Sq. M	21,020	20,615	102.0
iii.	M.M.YARN		0.42	M.Tons	2,262	2,278	99.3
6.	<u>LEATHER TANNING</u>	30	0.29				
i.	UPPER LEATHER		0.07	"000" Sq. M.	476	908	52.5
ii.	WET BLUE TANNED		0.22	"000" Sq. M.	79	83	95.2
7.	<u>COTTON GINNING & PRESSING</u>	85	3.30				
i.	C.G.& PRESSING		3.30	Bales	-	-	
8.	<u>PAPER & PAPER BOARD</u>	6	0.01				
i.	PRINTING PAPER		0.01	M.Tons	460	499	92.2
ii.	WRITTEN PAPER		0.01	M.Tons	383	-	
iii.	PACKING & OTHER PAPER		0.01	M.Tons	1,894	1,327	142.7
iv.	ADVERTISING MATERIAL		0.01	M.Tons	-	-	
9.	<u>PHARMACEUTICALS</u>	78	6.37				
i.	TABLETS		1.67	"000" NOs.	1,558,131	2,200,274	70.8
ii.	LIQUIDS/SYRUPS		1.97	"000" Liters.	12,296	9,132	134.6
iii.	CAPSULS		1.36	"000" NOs.	236,212	342,923	68.9
iv.	INJECTIONS		1.22	"000" NOs.	72,619	134,550	54.0
v.	OINTMENT		0.15	KGs.	132,341	203,177	65.1
10.	<u>ACID, ALKALIES & SALT</u>	3	0.04				
i.	SULPHURIC ACID		0.04	M.Tons	2,506	2,583	97.0
11.	<u>FERTILIZER</u>	3	3.50				
i.	UREA		3.50	M.Tons	224,478	254,613	88.2
ii.	AMONIA		3.50	M.Tons	58,109	75,291	77.2
iii.	DAP		3.50	M.Tons	112,866	50,029	225.6
12.	<u>PAINTS & VARNISH</u>	9	0.32				
i.	PAINTS		0.32	M.Tons	233	86	272.5
ii.	VARNISH		0.32	"000" Liters.	12	259	4.6
13.	<u>SOAP</u>	38	1.66				
i.	WASHING SOAP		1.66	M.Tons	9,896	5,834	169.6
ii.	DETERGENT POWDER		1.66	M.Tons	13,764	13,313	103.4
iii.	TOILET SOAP		1.66	M.Tons	2,672	1,729	154.5
iv.	TOOTH PASTE		1.66	M.Tons	897	602	149.0

Sr. No.	Industrial Sector/ Items	No. of Industrial Units as per CMI 2005-06	WEIGHT (2005-06)	Unit of Quantity	Production		Index of Production in Jun:2021 with May: 2021
					Jun:2021	May:2021	
14.	<u>PETROLEUM PRODUCTS</u>	2	9.32				
i.	L.P.G		9.32	"000" Liters.	1,763	1,881	93.7
ii.	NAPTHA SOLVENT		9.32	"000" Liters.	31,233	19,031	164.1
iii.	KEROSENE OIL		9.32	"000" Liters.	573	339	169.0
iv.	H.S.D		9.32	"000" Liters.	142,475	105,038	135.6
v.	FURNACE OIL		9.32	"000" Liters.	64,913	46,369	140.0
vi.	ASPHALT 80-100		9.32	"000" Liters.	684	-	
vii.	ASPHALT 60-70		9.32	"000" Liters.	13,539	9,690	139.7
viii.	MOTOR SPRIT		9.32	"000" Liters.	23,909	22,770	105.0
ix.	JET FUEL		9.32	"000" Liters.	13,460	12,820	105.0
x.	LUBRICATING OIL		9.32	"000" Liters.	14,479	13,468	107.5
xi.	OTHERS		0.00	"000" Liters.	29,559	10,728	275.5
15.	<u>TYRES & TUBES</u>	4	0.41				
i.	MOTOR TYRE		0.41	Nos.	269,151	179,991	149.5
ii.	MOTOR TUBE		0.41	Nos.	10,461	5,925	176.6
16.	<u>CEMENT</u>	11	3.86				
i.	CEMENT		3.86	M.Tons	523,313	337,656	155.0
17.	<u>M.S.PRODUCTS</u>	28	4.88				
i.	M.S PRODUCTS		4.88	M.Tons	10,928	4,571	239.1
18.	<u>STEEL PRODUCTS</u>	2	1.02				
i.	STEEL PRODUCTS		1.02	M.Tons	1,552	1,511	102.7
19.	<u>SAFETY RAZOR BLADE</u>	1	0.40				
i.	SAFETY RAZOR BLAD		0.04	"000" NOs.	50,731	51,718	98.1
20.	<u>SEWING MACHINES</u>	3	0.25				
i.	SEWING MACHINES		0.25	Nos.	1,415	1,417	99.9
21.	<u>ELEC. APPLIANCES</u>	3	2.21				
i.	REFRIGERATORS		0.11	Nos.	76,034	62,003	122.6
ii.	AIR-CONDITIONERS		0.60	Nos.	31,729	20,565	154.3
iii.	DEEP FREEZERS		0.50	Nos.	5,742	3,771	152.3
iv.	WASHING MACHINES		0.50	Nos.	27,906	21,356	130.7
v.	MICROWAVE OVEN		0.50	Nos.	43,499	43,890	99.1
22.	<u>AUTOMOBILE</u>	17	11.15				
i.	TRUCKS		2.71	Nos.	593	413	143.6
ii.	BUSES		0.77	Nos.	60	28	214.3
iii.	LCV'S		2.50	Nos.	1,685	1,995	84.5
iv.	MOTOR CYCLES		2.06	Nos.	152,488	144,068	105.8
v.	TRACTORS		0.25	Nos.	5,054	4,105	123.1
vi.	CARS		0.50	Nos.	18,154	12,785	142.0
vii.	VANS & JEEPS		1.18	Nos.	1,187	832	142.7
viii.	THREE WHEELERS		1.18	Nos.	4,575	2,508	182.4
	Grand Total	537	70.65				

Table 3: Production of Selected Items Pertaining to Large-Scale Manufacturing Sector, June-2021 Vs June-2020

Sr. No.	Industrial Sector/ Items	No. of Industrial Units as per CMI 2005-06	WEIGHT (2005-06)	Unit of Quantity	Production		Index of Production in Jun:2021 with Jun:2020
					Jun:2021	Jun:2020	
1.	<u>VEGETABLE GHEE</u>	35	1.61				
i.	VEGETABLE GHEE		1.11	M.Tons	30,812	35,156	87.6
ii.	COOKING OIL		0.50	M.Tons	17,913	15,506	115.5
2.	<u>SUGAR</u>	26	4.32				
i.	SUGAR		4.32	M.Tons	-	-	
3.	<u>TEA</u>	7	1.23				
i.	TEA		1.23	M.Tons	5,031	2,959	170.0
4.	<u>BEVERAGES</u>	13	0.85				
i.	BEVERAGES		0.85	"000" NOs.	82,214	100,242	82.0
ii.	WATER		0.85	"000" NOs.	33,417	16,479	202.8
5.	<u>COTTON TEXTILE</u>	133	13.65				
i.	COTTON YARN		9.10	M.Tons	17,242	13,860	124.4
ii.	COTTON FABRICS		4.13	"000" Sq. M	21,020	11,018	190.8
iii.	M.M.YARN		0.42	M.Tons	2,262	501	451.5
6.	<u>LEATHER TANNING</u>	30	0.29				
i.	UPPER LEATHER		0.07	"000" Sq. M.	476	604	78.8
ii.	WET BLUE TANNED		0.22	"000" Sq. M.	79	65	121.5
7.	<u>COTTON GINNING & PRESSING</u>	85	3.30				
i.	C.G.& PRESSING		3.30	Bales	-	-	
8.	<u>PAPER & PAPER BOARD</u>	6	0.01				
i.	PRINTING PAPER		0.01	M.Tons	460	253	181.8
ii.	WRITTEN PAPER		0.01	M.Tons	383	-	
iii.	PACKING & OTHER PAPER		0.01	M.Tons	1,894	1,344	140.9
iv.	ADVERTISING MATERIAL		0.01	M.Tons	-	22	
9.	<u>PHARMACEUTICALS</u>	78	6.37				
i.	TABLETS		1.67	"000" NOs.	1,558,131	1,995,171	78.1
ii.	LIQUIDS/SYRUPS		1.97	"000" Liters.	12,296	6,651	184.9
iii.	CAPSULES		1.36	"000" NOs.	236,212	282,011	83.8
iv.	INJECTIONS		1.22	"000" NOs.	72,619	104,639	69.4
v.	OINTMENT		0.15	KGs.	132,341	217,972	60.7
10.	<u>ACID, ALKALIES & SALT</u>	3	0.04				
i.	SULPHURIC ACID		0.04	M.Tons	2,506	2,391	104.8
11.	<u>FERTILIZER</u>	3	3.50				
i.	UREA		3.50	M.Tons	224,478	235,756	95.2
ii.	AMONIA		3.50	M.Tons	58,109	44,652	130.1
iii.	DAP*		3.50	M.Tons	112,866	72,697	155.3
12.	<u>PAINTS & VARNISH</u>	9	0.32				
i.	PAINTS		0.32	M.Tons	233	39	597.4
ii.	VARNISH		0.32	"000" Liters.	12	233	5.2
13.	<u>SOAP</u>	38	1.66				
i.	WASHING SOAP		1.66	M.Tons	9,896	5,357	184.7
ii.	DETERGENT POWDER		1.66	M.Tons	13,764	14,893	92.4
iii.	TOILET SOAP		1.66	M.Tons	2,672	1,890	141.4
iv.	TOOTH PASTE		1.66	M.Tons	897	849	105.7

Sr. No.	Industrial Sector/ Items	No. of Industrial Units as per CMI 2005-06	WEIGHT (2005-06)	Unit of Quantity	Production		Index of Production in Jun:2021 with Jun:2020
					Jun:2021	Jun:2020	
14.	<u>PETROLEUM PRODUCTS</u>	2	9.32				
i.	L.P.G		9.32	"000" Liters.	1,763	1,766	99.8
ii.	NAPHTHA SOLVENT		9.32	"000" Liters.	31,233	5,233	596.8
iii.	KEROSENE OIL		9.32	"000" Liters.	573	-	
iv.	H.S.D		9.32	"000" Liters.	142,475	81,790	174.2
v.	FURNACE OIL		9.32	"000" Liters.	64,913	35,197	184.4
vi.	ASPHALT 80-100		9.32	"000" Liters.	-	590	
vii.	ASPHALT 60-70		9.32	"000" Liters.	13,539	8,866	152.7
viii.	MOTOR SPRIT		9.32	"000" Liters.	23,909	23,076	103.6
ix.	JET FUEL		9.32	"000" Liters.	13,460	619	2173.3
x.	LUBRICATING OIL		9.32	"000" Liters.	14,479	8,756	165.4
xi.	OTHERS		0.00	"000" Liters.	29,559	813	3635.6
15.	<u>TYRES & TUBES</u>	4	0.41				
i.	MOTOR TYRE		0.41	Nos.	269,151	154,806	173.9
ii.	MOTOR TUBE		0.41	Nos.	10,461	26,140	40.0
16.	<u>CEMENT</u>	11	3.86				
i.	CEMENT		3.86	M.Tons	523,313	113,974	459.2
17.	<u>M.S.PRODUCTS</u>	28	4.88				
i.	M.S PRODUCTS		4.88	M.Tons	10,928	3,717	294.0
18.	<u>STEEL PRODUCTS</u>	2	1.02				
i.	STEEL PRODUCTS		1.02	M.Tons	1,552		
19.	<u>SAFETY RAZOR BLADE</u>	1	0.40				
i.	SAFETY RAZOR BLAD		0.04	"000" NOs.	50,731	7,658	662.5
20.	<u>SEWING MACHINES</u>	3	0.25				
i.	SEWING MACHINES		0.25	Nos.	1,415	1,580	89.6
21.	<u>ELEC. APPLIANCES</u>	3	2.21				
i.	REFRIGERATORS		0.11	Nos.	76,034	16,926	449.2
ii.	AIR-CONDITIONERS		0.60	Nos.	31,729	7,209	440.1
iii.	DEEP FREEZERS		0.50	Nos.	5,742	2,675	214.7
iv.	WASHING MACHINES		0.50	Nos.	27,906	4,509	618.9
v.	MICROWAVE OVEN		0.50	Nos.	43,499	13,908	312.8
22.	<u>AUTOMOBILE</u>	17	11.15				
i.	TRUCKS		2.71	Nos.	593	213	278.4
ii.	BUSES		0.77	Nos.	60	70	85.7
iii.	LCV'S		2.50	Nos.	1,685	1,003	168.0
iv.	MOTOR CYCLES		2.06	Nos.	152,488	142,044*	107.4
v.	TRACTORS		0.25	Nos.	5,054	4,040	125.1
vi.	CARS		0.50	Nos.	18,154	5,041	360.1
vii.	VANS & JEEPS		1.18	Nos.	1,187	261	454.8
viii.	THREE WHEELERS		1.18	Nos.	4,575	5,049	90.6
	Grand Total	537	70.65				

*Revised figure

Table 4: Production of Selected Items Pertaining to Large-Scale Manufacturing Sector,
2020-21 (Jul to Jun) Vs 2019-20 (Jul to Jun)

Sr. No.	Industrial Sector/ Items	No. of Industrial Units as per CMI 2005-06	WEIGHT (2005-06)	Unit of Quantity	Production		Index of Production in 2020-21 (Jul-Jun) with 2019-20 (Jul-Jun)
					2020-21 (Jul-Jun)	2019-20 (Jul-Jun)	
1.	<u>VEGETABLE GHEE</u>	35	1.61				
i.	VEGETABLE GHEE		1.11	M.Tons	413,756	411,379	100.6
ii.	COOKING OIL		0.50	M.Tons	194,403	189,727	102.5
2.	<u>SUGAR</u>	26	4.32				
i.	SUGAR		4.32	M.Tons	1,239,756	1,415,303	87.6
3.	<u>TEA</u>	7	1.23				
i.	TEA		1.23	M.Tons	51,832	51,402	100.8
4.	<u>BEVERAGES</u>	13	0.85				
i.	BEVERAGES		0.85	"000" NOs.	1,094,393	1,100,658	99.4
ii.	WATER		0.85	"000" NOs.	218,109	185,737	117.4
5.	<u>COTTON TEXTILE</u>	133	13.65				
i.	COTTON YARN		9.10	M.Tons	225,626	206,241	109.4
ii.	COTTON FABRICS		4.13	"000" Sq. M	234,572	128,937	181.9
iii.	M.M.YARN		0.42	M.Tons	18,030	9,233	195.3
6.	<u>LEATHER TANNING</u>	30	0.29				
i.	UPPER LEATHER		0.07	"000" Sq. M.	9,281	10,997	84.4
ii.	WET BLUE TANNED		0.22	"000" Sq. M.	1,037	1,038	99.9
7.	<u>COTTON GINNING & PRESSING</u>	85	3.30				
i.	C.G.& PRESSING		3.30	Bales	4,429,107	3,472,114	127.6
8.	<u>PAPER & PAPER BOARD</u>	6	0.01				
i.	PRINTING PAPER		0.01	M.Tons	4,063	4,342	93.6
ii.	WRITTEN PAPER		0.01	M.Tons	2,926	2,767	105.7
iii.	PACKING & OTHER PAPER		0.01	M.Tons	20,720	17,973	115.3
iv.	ADVERTISING MATERIAL		0.01	M.Tons	262	276	94.8
9.	<u>PHARMACEUTICALS</u>	78	6.37				
i.	TABLETS		1.67	"000" NOs.	23,731,293	24,723,938	96.0
ii.	LIQUIDS/SYRUPS		1.97	"000" Liters.	102,103	79,733	128.1
iii.	CAPSULES		1.36	"000" NOs.	4,162,200	3,368,066	123.6
iv.	INJECTIONS		1.22	"000" NOs.	1,426,735	1,157,531	123.3
v.	OINTMENT		0.15	KGs.	2,393,226	2,700,941	88.6
10.	<u>ACID, ALKALIES & SALT</u>	3	0.04				
i.	SULPHURIC ACID		0.04	M.Tons	26,644	27,415	97.2
11.	<u>FERTILIZER</u>	3	3.50				
i.	UREA		3.50	M.Tons	2,704,201	2,768,987	97.7
ii.	AMONIA		3.50	M.Tons	501,390	636,118	78.8
iii.	DAP		3.50	M.Tons	779,610	737,664	105.7
12.	<u>PAINTS & VARNISH</u>	9	0.32				
i.	PAINTS		0.32	M.Tons	1,096	1,095	100.0
ii.	VARNISH		0.32	"000" Liters.	2,902	4,092	70.9
13.	<u>SOAP</u>	38	1.66				
i.	WASHING SOAP		1.66	M.Tons	75,861	60,420	125.6
ii.	DETERGENT POWDER		1.66	M.Tons	170,349	171,234	99.5
iii.	TOILET SOAP		1.66	M.Tons	22,796	22,853	99.7

Sr. No.	Industrial Sector/ Items	No. of Industrial Units as per CMI 2005-06	WEIGHT (2005-06)	Unit of Quantity	Production		Index of Production in 2020-21 (Jul-Jun) with 2019-20 (Jul-Jun)
					2020-21 (Jul-Jun)	2019-20 (Jul-Jun)	
iv.	TOOTH PASTE		1.66	M.Tons	10,441	9,327	111.9
14.	<u>PETROLEUM PRODUCTS</u>	2	9.32				
i.	L.P.G		9.32	"000" Liters.	23,587	24,517	96.2
ii.	NAPHTHA SOLVENT		9.32	"000" Liters.	227,438	212,046	107.3
iii.	KEROSENE OIL		9.32	"000" Liters.	3,403	8,426	40.4
iv.	H.S.D		9.32	"000" Liters.	1,498,407	1,215,285	123.3
v.	FURNACE OIL		9.32	"000" Liters.	629,911	608,000	103.6
vi.	ASPHALT 80-100		9.32	"000" Liters.	9,086	115,451	7.9
vii.	ASPHALT 60-70		9.32	"000" Liters.	93,102	51,353	181.3
viii.	MOTOR SPRIT		9.32	"000" Liters.	261,088	196,694	132.7
ix.	JET FUEL		9.32	"000" Liters.	144,174	120,048	120.1
x.	LUBRICATING OIL		9.32	"000" Liters.	169,076	70,506	239.8
xi.	OTHERS		0.00	"000" Liters.	285,401	345,175	82.7
15.	<u>TYRES & TUBES</u>	4	0.41				
i.	MOTOR TYRE		0.41	Nos.	2,777,180	2,058,041	134.9
ii.	MOTOR TUBE		0.41	Nos.	241,662	481,886	50.1
16.	<u>CEMENT</u>	11	3.86				
i.	CEMENT		3.86	M.Tons	5,611,402	1,561,444	359.4
17.	<u>M.S.PRODUCTS</u>	28	4.88				
i.	M.S PRODUCTS		4.88	M.Tons	71,668	50,014	143.3
18.	<u>STEEL PRODUCTS</u>	2	1.02				
i.	STEEL PRODUCTS		1.02	M.Tons	20,040	-	
19.	<u>SAFETY RAZOR BLADE</u>	1	0.40				
i.	SAFETY RAZOR BLAD		0.04	"000" NOs.	854,089	574,273	148.7
20.	<u>SEWING MACHINES</u>	3	0.25				
i.	SEWING MACHINES		0.25	Nos.	17,764	26,407	67.3
21.	<u>ELEC. APPLIANCES</u>	3	2.21				
i.	REFRIGERATORS		0.11	Nos.	597,322	412,214	144.9
ii.	AIR-CONDITIONERS		0.60	Nos.	167,297	56,698	295.1
iii.	DEEP FREEZERS		0.50	Nos.	27,698	10,550	262.5
iv.	WASHING MACHINES		0.50	Nos.	334,332	199,413	167.7
v.	MICROWAVE OVEN		0.50	Nos.	477,756	277,319	172.3
22.	<u>AUTOMOBILE</u>	17	11.15				
i.	TRUCKS		2.71	Nos.	3,706	2,994	123.8
ii.	BUSES		0.77	Nos.	568	492	115.4
iii.	LCV'S		2.50	Nos.	19,527	12,900	151.4
iv.	MOTOR CYCLES		2.06	Nos.	1,943,621	1,298,720	149.7
v.	TRACTORS		0.25	Nos.	49,716	37,254	133.5
vi.	CARS		0.50	Nos.	152,490	102,042	149.4
vii.	VANS & JEEPS		1.18	Nos.	11,560	3,721	310.7
viii.	THREE WHEELERS		1.18	Nos.	51,016	38,503	132.5
	Grand Total	537	70.65				

Table 5: Employment in Selected Large-Scale Manufacturing Sector, Jun-2021 Vs May -2021

Sr. No.	Industrial Sector/ Items	No. of Industrial Units as per CMI 2005-06	Total Employees		Production Worker	
			Jun:2021	May:2021	Jun:2021	May:2021
1	<u>VEGETABLE GHEE</u>	35	2,144	2,144	1,569	1,569
2	<u>SUGAR</u>	26	8,617	8,504	5,445	5,359
3	<u>TEA</u>	7	3,047	3,134	2,604	2,693
4	<u>BEVERAGES</u>	13	4,046	4,378	1,309	1,562
5	<u>COTTON TEXTILE</u>	133	52,747	53,436	39,573	40,813
6	<u>LEATHER TANNING</u>	30	6,587	6,589	5,521	5,521
7	<u>PAPER & PAPER BOARD</u>	6	1,918	1,856	1,368	1,318
8	<u>PHARMACEUTICALS</u>	78	15,770	14,348	4,915	3,990
9	<u>ACID, ALKALIES & SALT</u>	3	18	18	13	13
10	<u>FERTILIZER</u>	3	945	957	789	800
11	<u>PAINTS & VARNISH</u>	9	125	125	64	64
12	<u>SOAP</u>	38	2,412	2,416	1,582	1,585
13	<u>PETROLEUM PRODUCTS</u>	2	428	430	333	334
14	<u>TYRES & TUBES</u>	4	5,876	5,824	4,140	4,112
15	<u>CEMENT</u>	11	4,786	4,789	2,038	2,036
16	<u>STEEL PRODUCTS</u>	2	224	224	81	81
17	<u>M.S PRODUCTS</u>	28	1,082	1,082	844	844
18	<u>SAFETY RAZOR BLAD</u>	1	283	284	262	262
19	<u>SEWING MACHINES</u>	3	411	411	354	354
20	<u>ELEC. APPLIANCES</u>	3	634	634	536	536
21	<u>AUTOMOBILE</u>	17	15,249	15,311	9,245	9,293
22	<u>STORAGE BATTERIES</u>	4	1,817	1,817	1,688	1,688
	Grand Total	456	129,166	128,712	84,273	84,825

Table 6: Employment in Selected Large-Scale Manufacturing Sector, Jun-2021 Vs Jun -2020

Sr. No.	Industrial Sector/ Items	No. of Industrial Units as per CMI 2005-06	Employees		Production Worker	
			Jun:2021	Jun:2020	Jun:2021	Jun:2020
1	<u>VEGETABLE GHEE</u>	35	2,144	2,262	1,569	1,582
2	<u>SUGAR</u>	26	8,617	5,575	5,445	5,214
3	<u>TEA</u>	7	3,047	3,012	2,604	2,550
4	<u>BEVERAGES</u>	13	4,046	3,132	1,309	1,035
5	<u>COTTON TEXTILE</u>	133	52,747	53,264	39,573	41,069
6	<u>LEATHER TANNING</u>	30	6,587	6,335	5,521	5,587
7	<u>PAPER & PAPER BOARD</u>	6	1,918	2,154	1,368	1,520
8	<u>PHARMACEUTICALS</u>	78	15,770	6,266	4,915	2,964
9	<u>ACID, ALKALIES & SALT</u>	3	18	18	13	13
10	<u>FERTILIZER</u>	3	945	989	789	824
11	<u>PAINTS & VARNISH</u>	9	125	99	64	50
12	<u>SOAP</u>	38	2,412	2,065	1,582	1,719
13	<u>PETROLEUM PRODUCTS</u>	2	428	438	333	339
14	<u>TYRES & TUBES</u>	4	5,876	5,680	4,140	4,020
15	<u>CEMENT</u>	11	4,786	4,357	2,038	1,860
16	<u>STEEL PRODUCTS</u>	2	224	-	81	-
17	<u>M.S PRODUCTS</u>	28	1,082	1,025	844	834
18	<u>SAFETY RAZOR BLAD</u>	1	283	288	262	251
19	<u>SEWING MACHINES</u>	3	411	410	354	354
20	<u>ELECTRICAL APPLIANCES</u>	3	634	750	536	663
21	<u>AUTOMOBILE</u>	17	15,249	15,001	9,245	6,770
22	<u>STORAGE BATTERIES</u>	4	1,817	1,847	1,688	1,628
	Grand Total	456	129,166	114,966	84,273	80,844

Table 7: Average Monthly Employment in Selected Large Scale Manufacturing Sector, 2020-21 (Jul to Jun) Vs 2019-20 (Jul to Jun)

Sr. No.	Industrial Sector/ Items	No. of Industrial Units as per CMI 2005-06	Average Monthly Total Employment		Average Monthly Production Worker	
			(Jul-Jun) 2020-21	(Jul-Jun) 2019-20	(Jul-Jun) 2020-21	(Jul-Jun) 2019-20
1	<u>VEGETABLE GHEE</u>	35	2,379	2,241	1,480	1,602
2	<u>SUGAR</u>	26	8,305	8,033	5,842	5,487
3	<u>TEA</u>	7	3,113	3,098	2,672	2,247
4	<u>BEVERAGES</u>	13	3,551	3,120	1,295	1,181
5	<u>COTTON TEXTILE</u>	133	53,365	54,110	40,864	41,978
6	<u>LEATHER TANNING</u>	30	6,654	6,498	5,579	5,568
7	<u>PAPER & PAPER BOARD</u>	6	2,055	2,237	1,470	1,609
8	<u>PHARMACEUTICALS</u>	78	9,078	6,227	3,896	3,446
9	<u>ACID, ALKALIES & SALT</u>	3	18	32	13	21
10	<u>FERTILIZER</u>	3	974	971	812	806
11	<u>PAINTS & VARNISH</u>	9	107	105	53	55
12	<u>SOAP</u>	38	2,290	2,414	1,624	2,086
13	<u>PETROLEUM PRODUCTS</u>	2	431	435	333	339
14	<u>TYRES & TUBES</u>	4	5,718	4,908	4,062	3,463
15	<u>CEMENT</u>	11	4,938	4,519	2,143	1,921
16	<u>STEEL PRODUCTS</u>	1	193	6,983	97	4,733
17	<u>M.S PRODUCTS</u>	28	1,082	842	867	683
18	<u>SAFETY RAZOR BLAD</u>	1	279	288	254	253
19	<u>SEWING MACHINES</u>	3	410	345	354	299
20	<u>ELECTRICAL APPLIANCES</u>	3	724	656	631	580
21	<u>AUTOMOBILE</u>	17	16,133	14,981	9,304	6,868
22	<u>STORAGE BATTERIES</u>	4	1,765	2,050	1,690	1,642
	Grand Total	455	123,563	125,091	85,334	86,865

Annexure – A: Proforma/ Questionnaire



**GOVERNMENT OF SINDH
PLANNING & DEVELOPMENT DEPARTMENT
BUREAU OF STATISTICS**

www.sindhbos.gov.pk

Street-13, Block-8, Kehkashan Clifton, Karachi-75600, P.O.Box# 3879



021-99251259



ddindustries.sindhbos@gmail.com / m.kazimjafri@hotmail.com

The information supplied will be kept strictly confidential and will be used for statistical purpose only.	REPORT FOR	
	MONTH	YEAR

MONTHLY SURVEY OF INDUSTRIAL PRODUCTION AND EMPLOYMENT IN SINDH.

INDUSTRY CODE

--	--	--	--	--	--

Estb: Code

--	--	--	--	--	--

LOCATION CODE

--	--	--

PART-I GENERAL PARTICULARS

i) Name and Address of the Establishment _____

ii) Name, Designation, Telephone, Cell and _____

Fax# of the person to be contacted. _____

iii) Website and E-mail Address _____

PART-II PRODUCTION DATA

S.No	Major Items of Production	Code	Unit of Quantity	Code	Previous Month	Current Month	Reasons of Growth/ Decline

PART-III WORKING DAYS AND EMPLOYMENT

i) No. of days establishment worked _____

ii) No. of Production workers. Male _____ Female _____ Total _____

iii) No. of Non production workers Male _____ Female _____ Total _____

TOTAL (ii + iii)

Male _____ Female _____ Total _____

Note: Production Workers mean those who are directly associated with production. It includes those engaged in manufacturing, assembling packing repairing etc. Working Supervisor should also be included, Non production worker mean those who are not directly associated with production it includes Administrative Clerical and Services Staff like Chowkidar, Driver and Sweeper.

Signature _____

Designation _____

Date _____

Annexure – B: Important Definitions

Large Scale Manufacturing Industries

Establishments where 10 or more employees are working are called large Scale Manufacturing Industries.

Employees

Employees mean all persons whether part time or full time who work in the establishments and receive remuneration in cash or in kind. Working proprietors, unpaid family workers and home workers are excluded from the category of employee. There are two types of employees Production Workers and Non-Production Workers.

- **Production Workers**

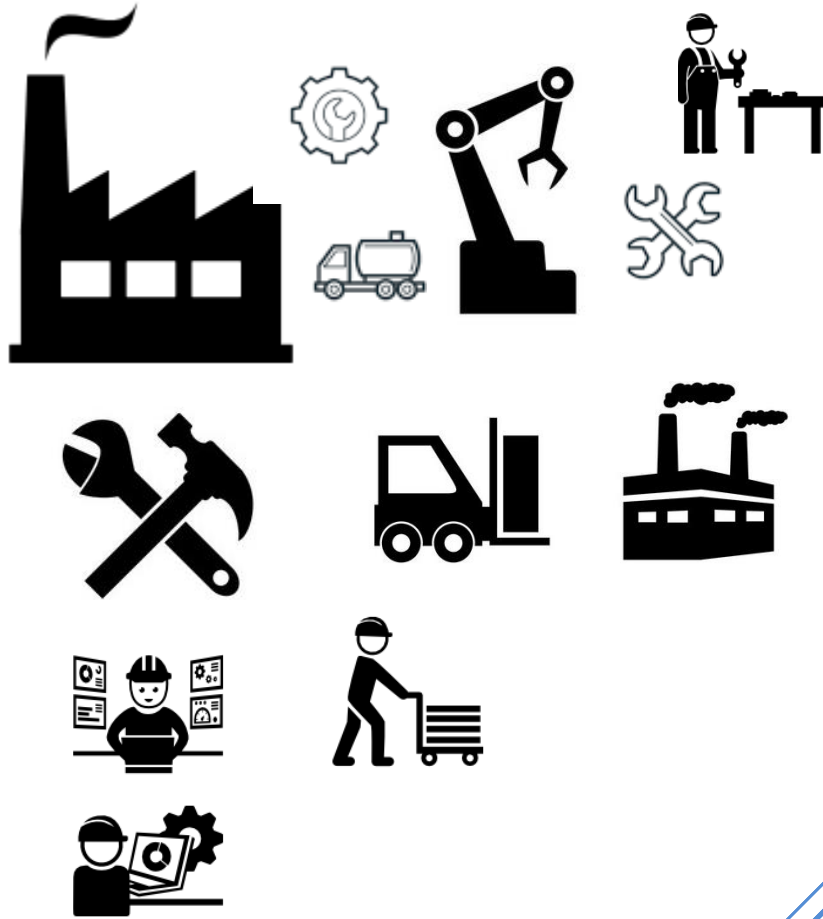
Are engaged in work directly associated with production like manufacturing, assembling, packing, repairing etc. Working supervisors and persons engaged for repairs and maintenance are also included.

- **Non-Production Workers**

Include administrative and professional employees, white-collar office employees, drivers, watchmen/guards, peons, sweepers, office boys, etc.

Annexure – C: Data Users

- Ministry of Industries & Production, Government of Pakistan.
- Planning & Development Department, Government of Sindh.
- Pakistan Bureau of Statistics, Government of Pakistan.
- State Bank of Pakistan.
- Provincial Bureaus of Statistics, Punjab, KPK and Baluchistan.
- Research & Training Wing, Planning & Development Department, Government of Sindh.



(Industries Section)
Bureau of Statistics
Planning & Development
Department
Government of Sindh
m.kazimjafri@hotmail.com

ST:13 Block-8 Kehkashan Clifton, Ch. Kahliqz-zaman road, Karachi
Ph. 021-99251259, Email: ddindustries.sindhbos@gmail.com
www.sindhbos.gov.pk