

GOVERNMENT OF SINDH
PLANNING & DEVELOPMENT DEPARTMENT
BUREAU OF STATISTICS



May, 2021

Industries Section, BOS

MONTHLY SURVEY OF
INDUSTRIAL PRODUCTION
& EMPLOYEMENT
IN SINDH



FOR OFFICIAL USE ONLY

Sindh Monthly Survey of Industrial Production & Employment (MIPE)

May, 2021



Bureau of Statistics
Planning & Development Department
Government of Sindh

www.sindhbos.gov.pk
ddindustries.sindhbos.gov.pk

Preface

Monthly Survey of Industrial Production and Employment (MIPE) is being conducted/published by Sindh Bureau of Statistics on regular basis. This report provides important statistics in respect of industrial production & employment of large Scale Manufacturing (LSM) industries in Sindh.

This report contains information on 62 items manufactured in 22 selected large scale industrial sectors covering 537 industrial establishments (selection on the basis of CMI 2005-06). These industries account for 70.6% of total value added of large scale manufacturing sector in Sindh.

MIPE Report provides information regarding General Index and Quantum Index of Manufacturing (QIM) to base period 2005-06, and analytical analysis on the current status of production and employment in manufacturing sector.

All the efforts are made to improve the industrial statistics and hope this report would prove useful to policy makers, planners, researchers and other data users. Suggestion/recommendations from the users will always be welcomed and appreciated.

Director General
Bureau of Statistics
Planning & Development Department
Government of Sindh

Contents

<i>Preface</i>	<i>II</i>
<i>Contents</i>	<i>III</i>
<i>List of Tables</i>	<i>IV</i>
<i>List of Figures</i>	<i>IV</i>
<i>List of Equations</i>	<i>IV</i>
<i>MIPE Team (Industries Section)</i>	<i>V</i>
<i>Introduction</i>	<i>1</i>
<i>1. Questionnaire/ Proforma</i>	<i>2</i>
<i>2. Methodology</i>	<i>2</i>
<i>3. Editing</i>	<i>2</i>
<i>4. Quantum Index of Manufacturing (QIM)</i>	<i>3</i>
<i>Analysis</i>	<i>4</i>
<i>Production and Employment Data</i>	<i>6</i>
<i>Annexure – A: Proforma/ Questionnaire</i>	<i>15</i>
<i>Annexure – B: Important Definitions</i>	<i>16</i>
<i>Annexure – C: Data Users</i>	<i>17</i>

List of Tables

TABLE 1: SERIES OF QUANTUM INDEX OF MANUFACTURING (QIM) AT (2005-06=100) _____	4
TABLE 2: PRODUCTION OF SELECTED ITEMS PERTAINING TO LARGE-SCALE MANUFACTURING SECTOR, MAY-2021 VS APRIL-2021 ____	6
TABLE 3: PRODUCTION OF SELECTED ITEMS PERTAINING TO LARGE-SCALE MANUFACTURING SECTOR, MAY-2021 VS MAY-2020 ____	8
TABLE 4: PRODUCTION OF SELECTED ITEMS PERTAINING TO LARGE-SCALE MANUFACTURING SECTOR, _____	10
TABLE 5: EMPLOYMENT IN SELECTED LARGE-SCALE MANUFACTURING SECTOR, MAY-2021 VS APRIL -2021 _____	12
TABLE 6: EMPLOYMENT IN SELECTED LARGE-SCALE MANUFACTURING SECTOR, MAY-2021 VS MAY -2020 _____	13
TABLE 7: AVERAGE MONTHLY EMPLOYMENT IN SELECTED LARGE SCALE MANUFACTURING SECTOR, _____	14

List of Figures

FIGURE 1: TREND OF QUANTUM INDEX OF LARGE SCALE MANUFACTURING INDUSTRIES AT BASE YEAR 2005-06 _____	5
FIGURE 2: TREND OF AVERAGE MONTHLY EMPLOYMENT IN LARGE SCALE MANUFACTURING INDUSTRIES _____	5

List of Equations

EQUATION 1 LASPAYER'S INDEX _____	3
-----------------------------------	---

MIPE Team (Industries Section)

Team Lead:

Muhammad Kazim Jafri

Deputy Director

Team Members:

1. Ms. Rukhsana Aziz

Statistical Officer

Support in Data Collection and Compilation:

1. Mr. Syed Younus Bukhari

Jr. Stenographer

2. Mr. Muhammad Akram Bhatti

Statistical Computer

Introduction

Industrial Statistics is very essential tool to track industrial growth and implementation of policies in right directions. This sector has great importance for economic development of country. As per the composition of Pakistan's economy in 2019-20, Agriculture Sector is 19.31%, Industries Sector is 19.29% and Services Sector is 61.4%.

According to the Pakistan Bureau of Statistics, for fiscal year 2020 followed partial lockdown situation faced by industrial sector in the country due to COVID-19. A significant impact has been observed in the manufacturing sector, particularly Large-Scale Manufacturing and Small-Scale Manufacturing. In the industrial sector, 2.64% negative provincial growth has been observed (PBS). From the share of industrial sector 12.48% are manufacturing and more specifically 9.5% is Large Scale Manufacturing (LSM) Sector. The role of Sindh province in the Large Scale Manufacturing is very vital. However, Sindh QIM's trend of overall manufacturing index is on declining side which mainly caused by COVID-19. As the Karachi is the largest metropolitan city of Pakistan, according to Karachi Chamber of Commerce and Industry (KCCI) it produces 15% with an annual Gross Domestic Product (GDP). Sindh Business Register (SBR), 2017 established by Sindh Bureau of Statistics, Planning & Development Department during the field operation CMI 2015-16 started from January, 2017 shows that 67% establishments/ factories are located in Karachi Division and remaining 33% are located in other districts of Sindh.

For the timely and quality industrial statistics, Sindh Bureau of Statistics, Planning & Development Department has been conducting Monthly Survey of Industrial Production and Employment (MIPE). This survey report includes 62 items manufactured in 22 large scale Industrial sectors from 537 establishments/ factories in Sindh. The sample of 537 firms was drawn from the last Census of Manufacturing Industries (CMI), 2005-06 and these industries account for 70.6% of total value added in terms of production during 2005-06, CMI. However, the recent CMI 2015-16 has been conducted by PBS, as it will be published that will be used as base year and QIM base year will be shifted from 2005-06 to 2015-16. In addition to collection, compilation, tabulation and processing of manufacturing data, Bureau of Statistics also computes monthly Quantum Index of Manufacturing by using the weights of production. The quantum index is an essential indicator to gauge to aggregate monthly production of province.

1. Questionnaire/ Proforma

A questionnaire/ Proforma is a research instrument consisting of a series of questions and other prompts for the purpose of gathering information from respondents. A pre-tested questionnaire is used for the data collection of industrial inputs related to employment and production, attached at **Annex-A**.

2. Methodology

The basic method of data collection for Sindh MIPE is the posting/ mailing of MIPE Questionnaires. More than 70% monthly returns are received to this Bureau through mail from industrial units. The non-responding or remaining establishments are visited by the officers/ officials of this Bureau, besides this the method of emailing, fax and telephonic approach are also used for collection of monthly returns and increase the response rate.

3. Editing

All the received returns are scrutinized for accuracy and consistency with previous data by the Industries Section of this Bureau. As per *Unit Calculation Sheet* different units of similar products are converted into the reporting units. In case of huge discrepancy between current and previous returns the factory management is approached to rectify that figures. In the absence establishment's return or non-availability of concerned person the average production of last month or the last month information is repeated for equivalence.

4. Quantum Index of Manufacturing (QIM)

A quantum index is an index based on quantity units of goods such as number or weight. Sindh bureau of Statistics is computing Index on Industrial Production using 2005-06 as base year. Index Series is generated by using Laspayer's Index.

$$QIM = \frac{\sum_{i=1}^n \frac{q_{im}}{q_{i0}} w_i}{\sum_{i=1}^n w_i} \times 100$$

Equation 1 Laspayer's Index

q_{im} = Production of i^{th} item during the current month

q_{i0} = Average Production of the same i^{th} item in the base period (2005-06)

w_i = Weight of the i^{th} item in the base period (2005-06)

$\sum_{i=1}^n w_i$ = Total Weight of 22 large scale industrial sectors covering 537 establishments in the base period with respect to the total value added of all the industries covered in CMI in the base year 2005-06.

Analysis

Summary findings on the basis of Index of Industrial Production are as follows:

- Overall Production in May, 2021 is followed decreasing trend of last three months and around 8% monthly production decreased in current month as compared to last month, the plausible causes are seasonal impact and the impact of third wave of COVID-19.
- Overall Production in May, 2021 is significantly increased by 43.5% as compared to corresponding month of last year (i.e. May, 2020). Last year's production down significantly due to complete lock down in province except food related industries, this was the first wave of pandemic.
- Cumulative production from July to May (2020-21) is increased by 18.6% as compared to the period of July to May (2019-20), that shows on cumulative basis this year is performing well as compared to last year.
- Employment during May, 2021 is slightly decreased, by 1.3% as compared to previous month (i.e. April, 2021).
- Employment during May, 2021 reported 17.1% which is significantly high in comparison with May, 2020.
- Average monthly employment during the period of July-May (2020-21) is 2.3% lower than the corresponding period of July-May (2019-20).

Table 1: Series of Quantum Index of Manufacturing (QIM) at (2005-06=100)

Month/ Year	2015-16	2016-17	2017-18	2018-19	2019-20	2020-21
July	255.7	284.0	327.0	290.8	259.7	294.2
August	266.0	287.7	336.4	265.5	220.9	238.5
September	274.2	281.5	330.9	311.3	266.7	295.4
October	247.0	291.4	355.7	287.0	277.0	315.6
November	283.7	317.1	343.2	273.3	280.3	320.5
December	261.7	302.8	341.5	265.2	223.7	350.6
January	297.4	286.1	374.0	321.3	263.8	347.2
February	293.2	283.3	324.5	309.0	313.2	336.1
March	253.9	275.6	341.4	279.7	258.2	337.1
April	250.6	276.8	338.5	258.2	172.1	308.9
May	254.4	283.9	311.3	248.2	199.8	282.5
June	259.0	258.1	307.4	257.6	324.9	
Average (Geometric Mean)	265.9	285.4	335.5	279.7	251.3	

Figure 1: Trend of Quantum Index of Large Scale Manufacturing Industries at base year 2005-06

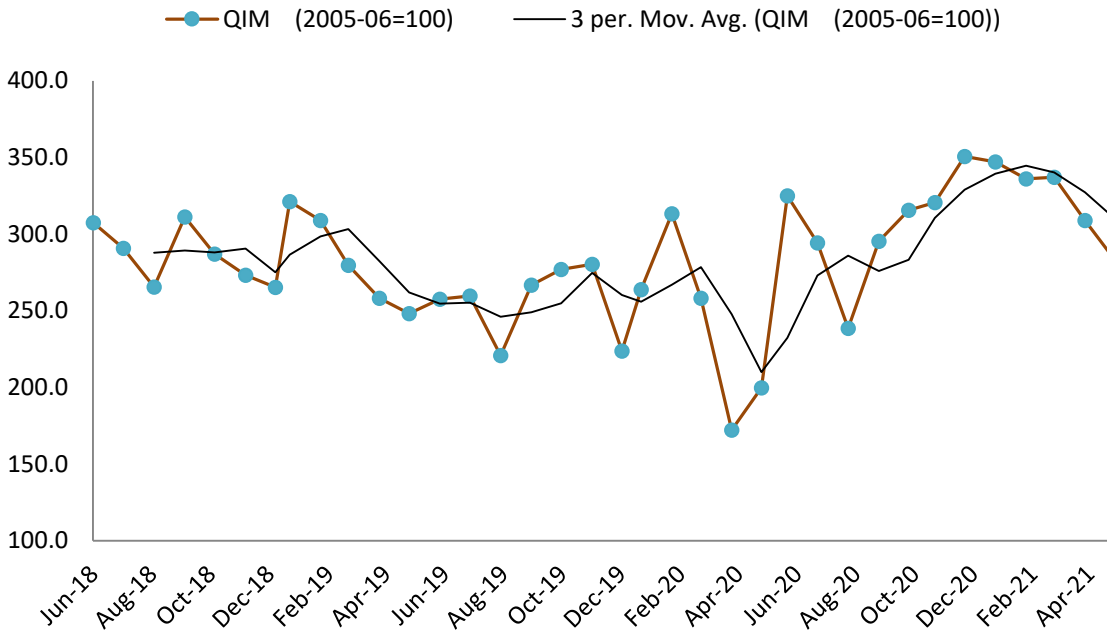
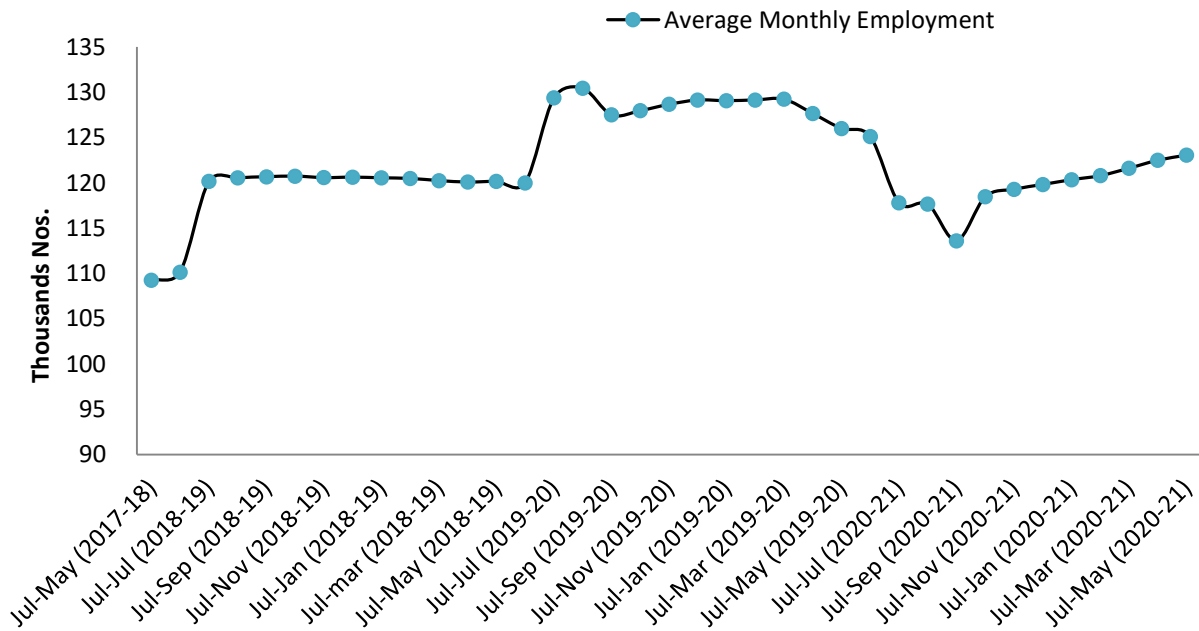


Figure 2: Trend of Average Monthly Employment in Large Scale Manufacturing Industries

In this month, mix trend observed in production of Large Manufacturing industries compared with previous month. Mostly items of pharmaceuticals, leather tanning and fertilizer sectors increased while production of petroleum, automobile and electrical appliances decreased.



The employment is showing a steady upward trend since October, 2020. Similar trend may be observed in future as well.

Production and Employment Data

Table 2: Production of Selected Items Pertaining to Large-Scale Manufacturing Sector, May-2021 Vs April-2021

Sr. No.	Industrial Sector/ Items	No. of Industrial Units as per CMI 2005-06	WEIGHT (2005-06)	Unit of Quantity	Production		Index of Production in May:2021 with April: 2021
					May:2021	April:2021	
1.	<u>VEGETABLE GHEE</u>	35	1.61				
i.	VEGETABLE GHEE		1.11	M.Tons	32,433	35,295	91.9
ii.	COOKING OIL		0.50	M.Tons	18,690	17,800	105.0
2.	<u>SUGAR</u>	26	4.32				
i.	SUGAR		4.32	M.Tons	-	-	
3.	<u>TEA</u>	7	1.23				
i.	TEA		1.23	M.Tons	4,512	4,297	105.0
4.	<u>BEVERAGES</u>	13	0.85				
i.	BEVERAGES		0.85	"000" NOs.	103,340	89,861	115.0
ii.	WATER*		0.85	"000" NOs.	18,741	18,778	99.8
5.	<u>COTTON TEXTILE</u>	133	13.65				
i.	COTTON YARN		9.10	M.Tons	17,480	16,418	106.5
ii.	COTTON FABRICS		4.13	"000" Sq. M	20,615	22,365	92.2
iii.	M.M.YARN		0.42	M.Tons	2,278	1,790	127.3
6.	<u>LEATHER TANNING</u>	30	0.29				
i.	UPPER LEATHER		0.07	"000" Sq. M.	908	826	109.9
ii.	WET BLUE TANNED		0.22	"000" Sq. M.	83	81	102.5
7.	<u>COTTON GINNING & PRESSING</u>	85	3.30				
i.	C.G.& PRESSING		3.30	Bales	-	-	
8.	<u>PAPER & PAPER BOARD</u>	6	0.01				
i.	PRINTING PAPER		0.01	M.Tons	499	274	182.2
ii.	WRITTEN PAPER		0.01	M.Tons	-	440	
iii.	PACKING & OTHER PAPER		0.01	M.Tons	1,327	1,888	70.3
iv.	ADVERTISING MATERIAL		0.01	M.Tons	-	31	
9.	<u>PHARMACEUTICALS</u>	78	6.37				
i.	TABLETS		1.67	"000" NOs.	2,200,274	2,095,499	105.0
ii.	LIQUIDS/SYRUPS		1.97	"000" Liters.	9,132	8,697	105.0
iii.	CAPSULES		1.36	"000" NOs.	342,923	393,259	87.2
iv.	INJECTIONS		1.22	"000" NOs.	134,550	117,703	114.3
v.	OINTMENT		0.15	KGs.	203,177	220,170	92.3
10.	<u>ACID, ALKALIES & SALT</u>	3	0.04				
i.	SULPHURIC ACID		0.04	M.Tons	2,583	2,512	102.8
11.	<u>FERTILIZER</u>	3	3.50				
i.	UREA		3.50	M.Tons	254,613	218,041	116.8
ii.	AMONIA		3.50	M.Tons	75,291	46,808	160.9
iii.	DAP		3.50	M.Tons	50,029	70,846	70.6
12.	<u>PAINTS & VARNISH</u>	9	0.32				
i.	PAINTS		0.32	M.Tons	86	76	112.5
ii.	VARNISH		0.32	"000" Liters.	259	273	94.9
13.	<u>SOAP</u>	38	1.66				
i.	WASHING SOAP		1.66	M.Tons	5,834	5,717	102.0
ii.	DETERGENT POWDER		1.66	M.Tons	13,313	14,185	93.9
iii.	TOILET SOAP		1.66	M.Tons	1,729	1,908	90.6
iv.	TOOTH PASTE		1.66	M.Tons	602	977	61.6

Sr. No.	Industrial Sector/ Items	No. of Industrial Units as per CMI 2005-06	WEIGHT (2005-06)	Unit of Quantity	Production		Index of Production in May:2021 with April: 2021
					May:2021	April:2021	
14.	<u>PETROLEUM PRODUCTS</u>	2	9.32				
i.	L.P.G		9.32	"000" Liters.	1,881	1,887	99.7
ii.	NAPHTHA SOLVENT		9.32	"000" Liters.	19,031	19,058	99.9
iii.	KEROSENE OIL		9.32	"000" Liters.	339	462	73.4
iv.	H.S.D		9.32	"000" Liters.	105,038	98,236	106.9
v.	FURNACE OIL		9.32	"000" Liters.	46,369	47,027	98.6
vi.	ASPHALT 80-100		9.32	"000" Liters.	-	1,061	
vii.	ASPHALT 60-70		9.32	"000" Liters.	9,690	12,060	80.4
viii.	MOTOR SPRIT		9.32	"000" Liters.	22,770	22,507	101.2
ix.	JET FUEL		9.32	"000" Liters.	12,820	8,467	151.4
x.	LUBRICATING OIL		9.32	"000" Liters.	13,468	15,450	87.2
xi.	OTHERS		0.00	"000" Liters.	10,728	20,116	53.3
15.	<u>TYRES & TUBES</u>	4	0.41				
i.	MOTOR TYRE		0.41	Nos.	179,991	233,191	77.2
ii.	MOTOR TUBE		0.41	Nos.	5,925	31,662	18.7
16.	<u>CEMENT</u>	11	3.86				
i.	CEMENT		3.86	M.Tons	337,656	484,906	69.6
17.	<u>M.S.PRODUCTS</u>	28	4.88				
i.	M.S PRODUCTS		4.88	M.Tons	4,571	6,429	71.1
18.	<u>STEEL PRODUCTS</u>	2	1.02				
i.	STEEL PRODUCTS		1.02	M.Tons	1,511	1,590	95.0
19.	<u>SAFETY RAZOR BLADE</u>	1	0.40				
i.	SAFETY RAZOR BLAD		0.04	"000" NOs.	51,718	81,494	
20.	<u>SEWING MACHINES</u>	3	0.25				
i.	SEWING MACHINES		0.25	Nos.	1,417	1,483	95.5
21.	<u>ELEC. APPLIANCES</u>	3	2.21				
i.	REFRIGERATORS		0.11	Nos.	62,003	62,108	99.8
ii.	AIR-CONDITIONERS		0.60	Nos.	20,565	22,604	91.0
iii.	DEEP FREEZERS		0.50	Nos.	3,771	4,837	78.0
iv.	WASHING MACHINES		0.50	Nos.	21,356	21,146	101.0
v.	MICROWAVE OVEN		0.50	Nos.	43,890	52,293	83.9
22.	<u>AUTOMOBILE</u>	17	11.15				
i.	TRUCKS		2.71	Nos.	413	293	141.0
ii.	BUSES		0.77	Nos.	28	37	75.7
iii.	LCV'S		2.50	Nos.	1,995	1,613	123.7
iv.	MOTOR CYCLES		2.06	Nos.	144,068	144,259	99.9
v.	TRACTORS		0.25	Nos.	4,105	4,674	87.8
vi.	CARS		0.50	Nos.	12,785	14,416	88.7
vii.	VANS & JEEPS		1.18	Nos.	832	1,131	73.6
viii.	THREE WHEELERS		1.18	Nos.	2,508	2,931	85.6
	Grand Total	537	70.65				

Table 3: Production of Selected Items Pertaining to Large-Scale Manufacturing Sector, May-2021 Vs May-2020

Sr. No.	Industrial Sector/ Items	No. of Industrial Units as per CMI 2005-06	WEIGHT (2005-06)	Unit of Quantity	Production		Index of Production in May:2021 with May:2020
					May:2021	May:2020	
1.	<u>VEGETABLE GHEE</u>	35	1.61				
i.	VEGETABLE GHEE		1.11	M.Tons	32,433	33,856	95.8
ii.	COOKING OIL		0.50	M.Tons	18,690	16,382	114.1
2.	<u>SUGAR</u>	26	4.32				
i.	SUGAR		4.32	M.Tons	-	-	
3.	<u>TEA</u>	7	1.23				
i.	TEA		1.23	M.Tons	4,512	3,732	120.9
4.	<u>BEVERAGES</u>	13	0.85				
i.	BEVERAGES		0.85	"000" NOs.	103,340	120,284	85.9
ii.	WATER		0.85	"000" NOs.	18,741	14,429	129.9
5.	<u>COTTON TEXTILE</u>	133	13.65				
i.	COTTON YARN		9.10	M.Tons	17,480	15,851	110.3
ii.	COTTON FABRICS		4.13	"000" Sq. M	20,615	10,526	195.8
iii.	M.M.YARN		0.42	M.Tons	2,278	473	481.6
6.	<u>LEATHER TANNING</u>	30	0.29				
i.	UPPER LEATHER		0.07	"000" Sq. M.	908	253	358.7
ii.	WET BLUE TANNED		0.22	"000" Sq. M.	83	45	184.4
7.	<u>COTTON GINNING & PRESSING</u>	85	3.30				
i.	C.G.& PRESSING		3.30	Bales	-	-	
8.	<u>PAPER & PAPER BOARD</u>	6	0.01				
i.	PRINTING PAPER		0.01	M.Tons	499	332	150.3
ii.	WRITTEN PAPER		0.01	M.Tons	-	-	
iii.	PACKING & OTHER PAPER		0.01	M.Tons	1,327	1,221	108.7
iv.	ADVERTISING MATERIAL		0.01	M.Tons	-	19	
9.	<u>PHARMACEUTICALS</u>	78	6.37				
i.	TABLETS		1.67	"000" NOs.	2,200,274	2,107,614	104.4
ii.	LIQUIDS/SYRUPS		1.97	"000" Liters.	9,132	7,368	123.9
iii.	CAPSULES		1.36	"000" NOs.	342,923	299,154	114.6
iv.	INJECTIONS		1.22	"000" NOs.	134,550	105,689	127.3
v.	OINTMENT		0.15	KGs.	203,177	235,641	86.2
10.	<u>ACID, ALKALIES & SALT</u>	3	0.04				
i.	SULPHURIC ACID		0.04	M.Tons	2,583	2,421	106.7
11.	<u>FERTILIZER</u>	3	3.50				
i.	UREA		3.50	M.Tons	254,613	252,160	101.0
ii.	AMONIA		3.50	M.Tons	75,291	49,352	152.6
iii.	DAP*		3.50	M.Tons	50,029	74,591	67.1
12.	<u>PAINTS & VARNISH</u>	9	0.32				
i.	PAINTS		0.32	M.Tons	86	38	225.0
ii.	VARNISH		0.32	"000" Liters.	259	104	249.0
13.	<u>SOAP</u>	38	1.66				
i.	WASHING SOAP		1.66	M.Tons	5,834	5,252	111.1
ii.	DETERGENT POWDER		1.66	M.Tons	13,313	13,971	95.3
iii.	TOILET SOAP		1.66	M.Tons	1,729	1,940	89.1
iv.	TOOTH PASTE		1.66	M.Tons	602	721	83.5

Sr. No.	Industrial Sector/ Items	No. of Industrial Units as per CMI 2005-06	WEIGHT (2005-06)	Unit of Quantity	Production		Index of Production in May:2021 with May:2020
					May:2021	May:2020	
14.	<u>PETROLEUM PRODUCTS</u>	2	9.32				
i.	L.P.G		9.32	"000" Liters.	1,881	2,351	80.0
ii.	NAPHTHA SOLVENT		9.32	"000" Liters.	19,031	1,599	1190.1
iii.	KEROSENE OIL		9.32	"000" Liters.	339	-	
iv.	H.S.D		9.32	"000" Liters.	105,038	94,295	111.4
v.	FURNACE OIL		9.32	"000" Liters.	46,369	20,278	228.7
vi.	ASPHALT 80-100		9.32	"000" Liters.	-	-	
vii.	ASPHALT 60-70		9.32	"000" Liters.	9,690	6,612	146.6
viii.	MOTOR SPRIT		9.32	"000" Liters.	22,770	26,577	85.7
ix.	JET FUEL		9.32	"000" Liters.	12,820	3,350	382.6
x.	LUBRICATING OIL		9.32	"000" Liters.	13,468	10,024	134.4
xi.	OTHERS		0.00	"000" Liters.	10,728	16,490	65.1
15.	<u>TYRES & TUBES</u>	4	0.41				
i.	MOTOR TYRE		0.41	Nos.	179,991	32,000	562.5
ii.	MOTOR TUBE		0.41	Nos.	5,925	7,620	77.8
16.	<u>CEMENT</u>	11	3.86				
i.	CEMENT		3.86	M.Tons	337,656	69,151	488.3
17.	<u>M.S.PRODUCTS</u>	28	4.88				
i.	M.S PRODUCTS		4.88	M.Tons	4,571	2,685	170.2
18.	<u>STEEL PRODUCTS</u>	2	1.02				
i.	STEEL PRODUCTS		1.02	M.Tons	1,511	-	
19.	<u>SAFETY RAZOR BLADE</u>	1	0.40				
i.	SAFETY RAZOR BLAD		0.04	"000" NOs.	51,718	3,060	1690.1
20.	<u>SEWING MACHINES</u>	3	0.25				
i.	SEWING MACHINES		0.25	Nos.	1,417	-	
21.	<u>ELEC. APPLIANCES</u>	3	2.21				
i.	REFRIGERATORS		0.11	Nos.	62,003	540	11482.0
ii.	AIR-CONDITIONERS		0.60	Nos.	20,565	630	3264.3
iii.	DEEP FREEZERS		0.50	Nos.	3,771	-	
iv.	WASHING MACHINES		0.50	Nos.	21,356	320	6673.8
v.	MICROWAVE OVEN		0.50	Nos.	43,890	502	8743.0
22.	<u>AUTOMOBILE</u>	17	11.15				
i.	TRUCKS		2.71	Nos.	413	-	
ii.	BUSES		0.77	Nos.	28	-	
iii.	LCV'S		2.50	Nos.	1,995	57	3500.0
iv.	MOTOR CYCLES		2.06	Nos.	144,068	32,316	445.8
v.	TRACTORS		0.25	Nos.	4,105	7,035	58.4
vi.	CARS		0.50	Nos.	12,785	656	1948.9
vii.	VANS & JEEPS		1.18	Nos.	832	13	6400.0
viii.	THREE WHEELERS		1.18	Nos.	2,508	2,087	120.2
	Grand Total	537	70.65				

Table 4: Production of Selected Items Pertaining to Large-Scale Manufacturing Sector,
2020-21 (Jul to May) Vs 2019-20 (Jul to May)

Sr. No.	Industrial Sector/ Items	No. of Industrial Units as per CMI 2005-06	WEIGHT (2005-06)	Unit of Quantity	Production		Index of Production in 2020-21 (Jul-May) with 2019-20 (Jul-May)
					2020-21 (Jul-May)	2019-20 (Jul-May)	
1.	<u>VEGETABLE GHEE</u>	35	1.61				
i.	VEGETABLE GHEE		1.11	M.Tons	382,944	376,223	101.8
ii.	COOKING OIL		0.50	M.Tons	176,490	174,221	101.3
2.	<u>SUGAR</u>	26	4.32				
i.	SUGAR		4.32	M.Tons	1,239,756	1,415,303	87.6
3.	<u>TEA</u>	7	1.23				
i.	TEA		1.23	M.Tons	46,801	48,443	96.6
4.	<u>BEVERAGES</u>	13	0.85				
i.	BEVERAGES		0.85	"000" NOs.	1,012,179	1,000,416	101.2
ii.	WATER		0.85	"000" NOs.	184,692	169,258	109.1
5.	<u>COTTON TEXTILE</u>	133	13.65				
i.	COTTON YARN		9.10	M.Tons	208,384	192,381	108.3
ii.	COTTON FABRICS		4.13	"000" Sq. M	213,552	117,919 ^R	181.1
iii.	M.M.YARN		0.42	M.Tons	15,768	8,732	180.6
6.	<u>LEATHER TANNING</u>	30	0.29				
i.	UPPER LEATHER		0.07	"000" Sq. M.	8,805	10,393	84.7
ii.	WET BLUE TANNED		0.22	"000" Sq. M.	958	973	98.5
7.	<u>COTTON GINNING & PRESSING</u>	85	3.30				
i.	C.G.& PRESSING		3.30	Bales	4,429,107	3,472,114	127.6
8.	<u>PAPER & PAPER BOARD</u>	6	0.01				
i.	PRINTING PAPER		0.01	M.Tons	3,603	4,089	88.1
ii.	WRITTEN PAPER		0.01	M.Tons	2,543	2,767	91.9
iii.	PACKING & OTHER PAPER		0.01	M.Tons	18,826	16,629	113.2
iv.	ADVERTISING MATERIAL		0.01	M.Tons	262	254	103.0
9.	<u>PHARMACEUTICALS</u>	78	6.37				
i.	TABLETS		1.67	"000" NOs.	22,173,162	22,728,766	97.6
ii.	LIQUIDS/SYRUPS		1.97	"000" Liters.	89,807	73,082	122.9
iii.	CAPSULS		1.36	"000" NOs.	3,925,988	3,086,055	127.2
iv.	INJECTIONS		1.22	"000" NOs.	1,354,116	1,052,892	128.6
v.	OINTMENT		0.15	KGs.	2,260,885	2,482,970	91.1
10.	<u>ACID, ALKALIES & SALT</u>	3	0.04				
i.	SULPHURIC ACID		0.04	M.Tons	24,138	25,024	96.5
11.	<u>FERTILIZER</u>	3	3.50				
i.	UREA		3.50	M.Tons	2,479,723	2,533,231	97.9
ii.	AMONIA		3.50	M.Tons	443,281	591,466	74.9
iii.	DAP		3.50	M.Tons	666,744	664,967	100.3
12.	<u>PAINTS & VARNISH</u>	9	0.32				
i.	PAINTS		0.32	M.Tons	863	1,056	81.7
ii.	VARNISH		0.32	"000" Liters.	2,890	3,859	74.9
13.	<u>SOAP</u>	38	1.66				
i.	WASHING SOAP		1.66	M.Tons	65,965	55,063	119.8

R 'Revised figure'

Sr. No.	Industrial Sector/ Items	No. of Industrial Units as per CMI 2005-06	WEIGHT (2005-06)	Unit of Quantity	Production		Index of Production in 2020-21 (Jul-May) with 2019-20 (Jul-May)
					2020-21 (Jul-May)	2019-20 (Jul-May)	
ii.	DETERGENT POWDER		1.66	M.Tons	156,585	156,341	100.2
iii.	TOILET SOAP		1.66	M.Tons	20,124	20,963	96.0
iv.	TOOTH PASTE		1.66	M.Tons	9,544	8,478	112.6
14.	<u>PETROLEUM PRODUCTS</u>	2	9.32				
i.	L.P.G		9.32	"000" Liters.	21,824	22,751	95.9
ii.	NAPHTHA SOLVENT		9.32	"000" Liters.	196,206	206,813	94.9
iii.	KEROSENE OIL		9.32	"000" Liters.	2,830	8,426	33.6
iv.	H.S.D		9.32	"000" Liters.	1,355,932	1,133,495	119.6
v.	FURNACE OIL		9.32	"000" Liters.	564,998	572,803	98.6
vi.	ASPHALT 80-100		9.32	"000" Liters.	8,401	114,861	7.3
vii.	ASPHALT 60-70		9.32	"000" Liters.	79,564	42,487	187.3
viii.	MOTOR SPRIT		9.32	"000" Liters.	237,179	173,618	136.6
ix.	JET FUEL		9.32	"000" Liters.	130,714	119,429	109.4
x.	LUBRICATING OIL		9.32	"000" Liters.	154,596	61,750	250.4
xi.	OTHERS		0.00	"000" Liters.	255,842	344,362	74.3
15.	<u>TYRES & TUBES</u>	4	0.41				
i.	MOTOR TYRE		0.41	Nos.	2,508,029	1,903,235	131.8
ii.	MOTOR TUBE		0.41	Nos.	231,201	455,746	50.7
16.	<u>CEMENT</u>	11	3.86				
i.	CEMENT		3.86	M.Tons	5,088,089	1,447,470	351.5
17.	<u>M.S.PRODUCTS</u>	28	4.88				
i.	M.S PRODUCTS		4.88	M.Tons	60,740	46,297	131.2
18.	<u>STEEL PRODUCTS</u>	2	1.02				
i.	STEEL PRODUCTS		1.02	M.Tons	18,488	-	
19.	<u>SAFETY RAZOR BLADE</u>	1	0.40				
i.	SAFETY RAZOR BLAD		0.04	"000" NOs.	803,358	566,615	141.8
20.	<u>SEWING MACHINES</u>	3	0.25				
i.	SEWING MACHINES		0.25	Nos.	16,349	24,827	65.9
21.	<u>ELEC. APPLIANCES</u>	3	2.21				
i.	REFRIGERATORS		0.11	Nos.	521,288	395,288	131.9
ii.	AIR-CONDITIONERS		0.60	Nos.	135,568	49,489	273.9
iii.	DEEP FREEZERS		0.50	Nos.	21,956	7,875	278.8
iv.	WASHING MACHINES		0.50	Nos.	306,426	194,904	157.2
v.	MICROWAVE OVEN		0.50	Nos.	434,257	263,411	164.9
22.	<u>AUTOMOBILE</u>	17	11.15				
i.	TRUCKS		2.71	Nos.	3,113	2,781	111.9
ii.	BUSES		0.77	Nos.	508	422	120.4
iii.	LCV'S		2.50	Nos.	17,842	11,897	150.0
iv.	MOTOR CYCLES		2.06	Nos.	1,791,133	1,156,676	154.9
v.	TRACTORS		0.25	Nos.	44,662	33,214	134.5
vi.	CARS		0.50	Nos.	134,336	97,001	138.5
vii.	VANS & JEEPS		1.18	Nos.	10,373	3,460	299.8
viii.	THREE WHEELERS		1.18	Nos.	46,441	33,454	138.8
	Grand Total	537	70.65				

Table 5: Employment in Selected Large-Scale Manufacturing Sector, May-2021 Vs April -2021

Sr. No.	Industrial Sector/ Items	No. of Industrial Units as per CMI 2005-06	Total Employees		Production Worker	
			May:2021	Apr:2021	May:2021	Apr:2021
1	<u>VEGETABLE GHEE</u>	35	2,144	2,202	1,569	1,581
2	<u>SUGAR</u>	26	8,504	8,869	5,359	5,688
3	<u>TEA</u>	7	3,134	3,120	2,693	2,688
4	<u>BEVERAGES</u>	13	4,378	3,853	1,562	1,447
5	<u>COTTON TEXTILE</u>	133	53,436	53,463	40,813	40,821
6	<u>LEATHER TANNING</u>	30	6,589	6,594	5,521	5,539
7	<u>PAPER & PAPER BOARD</u>	6	1,856	1,872	1,318	1,390
8	<u>PHARMACEUTICALS</u>	78	14,348	14,250	3,990	4,876
9	<u>ACID, ALKALIES & SALT</u>	3	18	18	13	13
10	<u>FERTILIZER</u>	3	957	980	800	821
11	<u>PAINTS & VARNISH</u>	9	125	103	64	50
12	<u>SOAP</u>	38	2,416	2,416	1,585	1,584
13	<u>PETROLEUM PRODUCTS</u>	2	430	430	334	334
14	<u>TYRES & TUBES</u>	4	5,824	5,764	4,112	4,080
15	<u>CEMENT</u>	11	4,789	4,795	2,036	2,042
16	<u>STEEL PRODUCTS</u>	2	224	278	81	107
17	<u>M.S PRODUCTS</u>	28	1,082	1,082	844	844
18	<u>SAFETY RAZOR BLAD</u>	1	284	284	262	262
19	<u>SEWING MACHINES</u>	3	411	411	354	354
20	<u>ELEC. APPLIANCES</u>	3	634	676	536	536
21	<u>AUTOMOBILE</u>	17	15,311	17,156	9,293	12,202
22	<u>STORAGE BATTERIES</u>	4	1,817	1,817	1,688	1,619
	Grand Total	456	128,712	130,432	84,825	88,876

Table 6: Employment in Selected Large-Scale Manufacturing Sector, May-2021 Vs May -2020

Sr. No.	Industrial Sector/ Items	No. of Industrial Units as per CMI 2005-06	Employees		Production Worker	
			May:2021	May:2020	May:2021	May:2020
1	<u>VEGETABLE GHEE</u>	35	2,144	2,258	1,569	1,574
2	<u>SUGAR</u>	26	8,504	5,525	5,359	5,288
3	<u>TEA</u>	7	3,134	3,033	2,693	2,574
4	<u>BEVERAGES</u>	13	4,378	3,598	1,562	1,537
5	<u>COTTON TEXTILE</u>	133	53,436	53,414	40,813	41,205
6	<u>LEATHER TANNING</u>	30	6,589	6,344	5,521	5,605
7	<u>PAPER & PAPER BOARD</u>	6	1,856	2,162	1,318	1,526
8	<u>PHARMACEUTICALS</u>	78	14,348	6,274	3,990	3,662
9	<u>ACID, ALKALIES & SALT</u>	3	18	18	13	13
10	<u>FERTILIZER</u>	3	957	984	800	816
11	<u>PAINTS & VARNISH</u>	9	125	103	64	54
12	<u>SOAP</u>	38	2,416	2,072	1,585	1,724
13	<u>PETROLEUM PRODUCTS</u>	2	430	438	334	339
14	<u>TYRES & TUBES</u>	4	5,824	716	4,112	506
15	<u>CEMENT</u>	11	4,789	4,362	2,036	1,863
16	<u>STEEL PRODUCTS</u>	2	224	-	81	-
17	<u>M.S PRODUCTS</u>	28	1,082	818	844	670
18	<u>SAFETY RAZOR BLAD</u>	1	284	288	262	251
19	<u>SEWING MACHINES</u>	3	411	-	354	-
20	<u>ELECTRICAL APPLIANCES</u>	3	634	375	536	330
21	<u>AUTOMOBILE</u>	17	15,311	14,877	9,293	6,865
22	<u>STORAGE BATTERIES</u>	4	1,817	1,808	1,688	1,595
	Grand Total	456	128,712	109,467	84,825	77,995

*Table 7: Average Monthly Employment in Selected Large Scale Manufacturing Sector,
2020-21 (Jul to May) Vs 2019-20 (Jul to May)*

Sr. No.	Industrial Sector/ Items	No. of Industrial Units as per CMI 2005-06	Average Monthly Total Employment		Average Monthly Production Worker	
			(Jul-May) 2020-21	(Jul-May) 2019-20	(Jul-May) 2020-21	(Jul-May) 2019-20
1	<u>VEGETABLE GHEE</u>	35	2,401	2,239	1,471	1,604
2	<u>SUGAR</u>	26	8,277	8,256	5,878	5,512
3	<u>TEA</u>	7	3,119	3,106	2,678	2,219
4	<u>BEVERAGES</u>	13	3,505	3,119	1,294	1,195
5	<u>COTTON TEXTILE</u>	133	53,421	54,187	40,981	42,061
6	<u>LEATHER TANNING</u>	30	6,660	6,513	5,585	5,566
7	<u>PAPER & PAPER BOARD</u>	6	2,068	2,244	1,479	1,617
8	<u>PHARMACEUTICALS</u>	78	8,470	6,223	3,804	3,489
9	<u>ACID, ALKALIES & SALT</u>	3	18	33	13	21
10	<u>FERTILIZER</u>	3	977	969	814	804
11	<u>PAINTS & VARNISH</u>	9	106	105	52	56
12	<u>SOAP</u>	38	2,279	2,446	1,627	2,120
13	<u>PETROLEUM PRODUCTS</u>	2	431	434	333	339
14	<u>TYRES & TUBES</u>	4	5,704	4,838	4,055	3,412
15	<u>CEMENT</u>	11	4,952	4,534	2,153	1,926
16	<u>STEEL PRODUCTS</u>	1	190	7,618	98	5,163
17	<u>M.S PRODUCTS</u>	28	1,082	826	869	670
18	<u>SAFETY RAZOR BLAD</u>	1	278	288	253	253
19	<u>SEWING MACHINES</u>	3	410	339	354	293
20	<u>ELECTRICAL APPLIANCES</u>	3	733	648	640	572
21	<u>AUTOMOBILE</u>	17	16,214	14,979	9,309	6,877
22	<u>STORAGE BATTERIES</u>	4	1,760	2,068	1,690	1,643
	Grand Total	455	123,054	126,012	85,431	87,412

Annexure – A: Proforma/ Questionnaire



**GOVERNMENT OF SINDH
PLANNING & DEVELOPMENT DEPARTMENT
BUREAU OF STATISTICS**

www.sindhbos.gov.pk

Street-13, Block-8, Kehkashan Clifton, Karachi-75600, P.O.Box# 3879



021-99251259



ddindustries.sindhbos@gmail.com / m.kazimjafri@hotmail.com

The information supplied will be kept strictly confidential and will be used for statistical purpose only.	REPORT FOR	
	MONTH	YEAR

MONTHLY SURVEY OF INDUSTRIAL PRODUCTION AND EMPLOYMENT IN SINDH.

INDUSTRY CODE

--	--	--	--	--

Estb: Code

--	--	--	--

LOCATION CODE

--	--	--

PART-I GENERAL PARTICULARS

i) Name and Address of the Establishment _____

ii) Name, Designation, Telephone, Cell and _____

Fax# of the person to be contacted. _____

iii) Website and E-mail Address _____

PART-II PRODUCTION DATA

S.No	Major Items of Production	Code	Unit of Quantity	Code	Previous Month	Current Month	Reasons of Growth/ Decline

PART-III WORKING DAYS AND EMPLOYMENT

i) No. of days establishment worked _____

ii) No. of Production workers. Male _____ Female _____ Total _____

iii) No. of Non production workers Male _____ Female _____ Total _____

TOTAL (ii + iii)

Male _____ Female _____ Total _____

Note: Production Workers mean those who are directly associated with production. It includes those engaged in manufacturing, assembling packing repairing etc. Working Supervisor should also be included, Non production worker mean those who are not directly associated with production it includes Administrative Clerical and Services Staff like Chowkidar, Driver and Sweeper.

Signature _____

Designation _____

Date _____

Annexure – B: Important Definitions

Large Scale Manufacturing Industries

Establishments where 10 or more employees are working are called large Scale Manufacturing Industries.

Employees

Employees mean all persons whether part time or full time who work in the establishments and receive remuneration in cash or in kind. Working proprietors, unpaid family workers and home workers are excluded from the category of employee. There are two types of employees Production Workers and Non-Production Workers.

- **Production Workers**

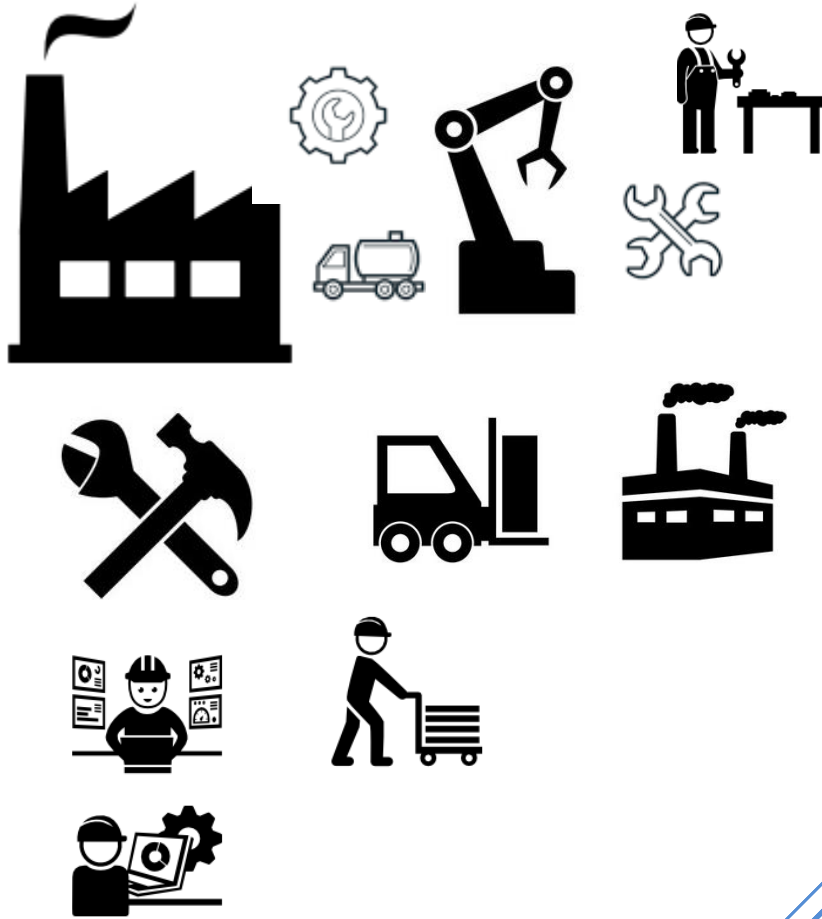
Are engaged in work directly associated with production like manufacturing, assembling, packing, repairing etc. Working supervisors and persons engaged for repairs and maintenance are also included.

- **Non-Production Workers**

Include administrative and professional employees, white-collar office employees, drivers, watchmen/guards, peons, sweepers, office boys, etc.

Annexure – C: Data Users

- Ministry of Industries & Production, Government of Pakistan.
- Planning & Development Department, Government of Sindh.
- Pakistan Bureau of Statistics, Government of Pakistan.
- State Bank of Pakistan.
- Provincial Bureaus of Statistics, Punjab, KPK and Baluchistan.
- Research & Training Wing, Planning & Development Department, Government of Sindh.



(Industries Section)
Bureau of Statistics
Planning & Development
Department
Government of Sind
m.kazimjafri@hotmail.com

ST:13 Block-8 Kehkashan Clifton, Ch. Kahliqz-zaman road, Karachi
Ph. 021-99251259, Email: ddindustries.sindhbos@gmail.com
www.sindhbos.gov.pk