

MONTHLY SURVEY OF INDUSTRIAL PRODUCTION & EMPLOYMENT IN SINDH



March, 2022

Industries Section, BOS



**BUREAU OF STATISTICS
PLANNING & DEVELOPMENT DEPARTMENT
GOVERNMENT OF SINDH**



**Sindh Monthly
Survey of
Industrial
Production &
Employment
(MIPE)
March, 2022**

**Bureau of Statistics
Planning & Development Department
Government of Sindh**

**<https://sbos.sindh.gov.pk>
ddindustries.sindhbos@gmail.com**

**ST:13 Block-8 Kehkashan Clifton, Ch. Kahliqz-zaman road, Karachi
Ph. 021-99251259**

Preface

Monthly Survey of Industrial Production and Employment (MIPE) is being conducted/ published by Sindh Bureau of Statistics on regular basis. This report provides important statistics in respect of industrial production & employment of large Scale Manufacturing (LSM) industries in Sindh.

This report contains information on 60 items manufactured in 22 selected large scale industrial sectors covering 537 industrial establishments (selection on the basis of CMI 2005-06). These industries account for 70.43% of total value added of large scale manufacturing sector in Sindh.

MIPE Report provides information regarding General Index and Quantum Index of Manufacturing (QIM) to base period 2005-06, and analytical analysis on the current status of production and employment in manufacturing sector.

All the efforts are made to improve the industrial statistics and hope this report would prove useful to policy makers, planners, researchers and other data users. Suggestion/ recommendations from the users will always be welcomed and appreciated.

Dr. Ishaque Ahmed Ansari
Director General
Bureau of Statistics
Planning & Development Department
Government of Sindh

Table of Contents

LIST OF TABLES	III
LIST OF FIGURES.....	III
LIST OF EQUATIONS	III
MIPE TEAM (INDUSTRIES SECTION)	IV
1. INTRODUCTION	1
1.1. QUESTIONNAIRE/ PROFORMA	2
1.2. METHODOLOGY	2
1.3. EDITING	2
2. QUANTUM INDEX OF MANUFACTURING (QIM).....	3
REPORT ANALYSIS.....	4
ANNEXURE – A PROFORMA/ QUESTIONNAIRE	15
ANNEXURE – B IMPORTANT DEFINITIONS	16
ANNEXURE – C DATA USERS	17

List of Tables

TABLE 1: SERIES OF QUANTUM INDEX OF MANUFACTURING (QIM) AT (2005-06=100)	4
TABLE 2: PRODUCTION OF SELECTED ITEMS PERTAINING TO LARGE-SCALE MANUFACTURING SECTOR, MARCH-2022 VS FEBRUARY-2022	6
TABLE 3: PRODUCTION OF SELECTED ITEMS PERTAINING TO LARGE-SCALE MANUFACTURING SECTOR, MARCH-2022 VS MARCH-2021	8
TABLE 4: PRODUCTION OF SELECTED ITEMS PERTAINING TO LARGE-SCALE MANUFACTURING SECTOR,	10
TABLE 5: EMPLOYMENT IN SELECTED LARGE-SCALE MANUFACTURING SECTOR, MAR-2022 VS FEB-2022	12
TABLE 6: EMPLOYMENT IN SELECTED LARGE-SCALE MANUFACTURING SECTOR, MARCH-2022 VS MARCH-2021	13
TABLE 7: AVERAGE MONTHLY EMPLOYMENT IN SELECTED LARGE SCALE MANUFACTURING SECTOR,	14

List of Figures

FIGURE 1: TREND OF QUANTUM INDEX OF LARGE SCALE MANUFACTURING INDUSTRIES AT BASE YEAR 2005-06	5
FIGURE 2: TREND OF AVERAGE MONTHLY EMPLOYMENT IN LARGE SCALE MANUFACTURING INDUSTRIES	5

List of Equations

EQUATION 1 LASPAYER'S INDEX	3
-----------------------------	---

MIPE Team (Industries Section)

Muhammad Kazim Jafri

Deputy Director

Abdul Qayoom Pitafi

Statistical Officer

Rukhsana Aziz

Statistical Officer

Syed Younus Bukhari

Jr. Stenographer

Muhammad Akram Bhatti

Statistical Computer

1. Introduction

A robust manufacturing sector promotes domestic production, exports and generates employment, hence stimulates the overall growth of an economy. In Pakistan, manufacturing sector contributes 12.79% to Gross Domestic Product (GDP) at 9.73 percent of GDP dominates the overall manufacturing sector and the sector employs 16.1 % of the country's labor force.

Industrial Statistics is very essential tool to track industrial growth and implementation of policies in right directions. This sector has great importance for economic development of country. As per the composition of Pakistan's economy in 2020-21, Agriculture Sector is 19.2%, Industries Sector is 19.1% and Services Sector is 61.7%.

Manufacturing sector consists of three sub-sectors: Large Scale Manufacturing (LSM), Small Scale Manufacturing (SSM) and Slaughtering. According to the Pakistan Bureau of Statistics, Industrial sector performance is more dependent on Large-Scale Manufacturing (LSM) as it holds 51% share in Industry whereas LSM is reflected by Quantum Index of Manufacturing (QIM) data. Quantum Index of Manufacturing (QIM) is a measure of LSM performance with 70.33 weight in overall LSM and derived from the Census of Manufacturing Industries (CMI) 2005-06.

The role of Sindh province in the Large Scale Manufacturing is very vital. However, Sindh QIM's trend of overall manufacturing index has random behavior with ups and downs; which main cause in last year is COVID-19 and recession in economy. As the Karachi is the largest metropolitan city of Pakistan, according to Karachi Chamber of Commerce and Industry (KCCI) it produces 15% with an annual Gross Domestic Product (GDP). Sindh Business Register (SBR), 2017 established by Sindh Bureau of Statistics, Planning & Development Department during the field operation CMI 2015-16 started from January, 2017 shows that 67% establishments/ factories are located in Karachi Division and remaining 33% are located in other districts of Sindh.

For the timely and quality industrial statistics, Sindh Bureau of Statistics, Planning & Development Department has been conducting Monthly Survey of Industrial Production and Employment (MIPE). This survey report includes 60 items manufactured in 22 large scale Industrial sectors from 537 establishments/ factories in Sindh. The sample of 537 firms was drawn from the last Census of Manufacturing Industries (CMI), 2005-06 and these industries account for 70.43% of total value added in terms of production during 2005-06.

1.1. Questionnaire/ Proforma

A questionnaire/ Proforma is a research instrument consisting of a series of questions and other prompts for the purpose of gathering information from respondents. A pre-tested questionnaire is used for the data collection of industrial inputs related to employment and production, attached at Annex-A.

1.2. Methodology

The basic method of data collection for Sindh MIPE is the posting/ mailing of MIPE Questionnaires. More than 70% monthly returns are received to this Bureau through mail from industrial units. The non-responding or remaining establishments are visited by the officers/ officials of this Bureau, besides this the method of emailing, fax and telephonic approach are also used for collection of monthly returns and increase the response rate.

1.3. Editing

All the received returns are scrutinized for accuracy and consistency with previous data by the Industries Section of this Bureau. As per *Unit Calculation Sheet* different units of similar products are converted into the reporting units. In case of huge discrepancy between current and previous returns the factory management is approached to rectify that figures. In the absence establishment's return or non-availability of concerned person the average production of last month or the last month information is repeated for equivalence.

2. Quantum Index of Manufacturing (QIM)

A quantum index is an index based on quantity units of goods such as number or weight. Sindh bureau of Statistics is computing Index on Industrial Production using 2005-06 as base year. Index Series is generated by using Laspayer's Index.

$$QIM = \frac{\sum_{i=1}^n \frac{q_{im}}{q_{i0}} w_i}{\sum_{i=1}^n w_i} \times 100$$

Equation 1 Laspayer's Index

q_{im} = Production of i^{th} item during the current month

q_{i0} = Average Production of the same i^{th} item in the base period (2005-06)

w_i = Weight of the i^{th} item in the base period (2005-06)

$\sum_{i=1}^n w_i$ = Total Weight of 22 large scale industrial sectors covering 537 establishments in the base period with respect to the total value added of all the industries covered in CMI in the base year 2005-06.

Report Analysis

Summary findings on the basis of Index of Industrial Production are as follows:

- Overall Production in March, 2022 is increased by 2.29% as compared to last month of February, 2022.
- Production in manufacturing sector for the month of March, 2022 has a significantly upward jump of 39.07% as compared to corresponding month of last year. The plausible reason for this huge increase is the less production during successive waves of COVID in 2021.
- Cumulative production from July to March (2021-22) is slightly increased by 0.71% than the cumulative production of July-March (2020-21) which also reflects the less production during subsequent waves of COVID-19 in the year of 2021.
- Large Scale Manufacturing employment during March, 2022 increased by 3.52% as compared to previous month.
- Employment during March, 2022 is 18.73% higher than March, 2021.
- Average monthly employment during the period of July-March (2021-22) is 16.79% higher as compared to the corresponding period of July-March (2020-21).

Table 1: Series of Quantum Index of Manufacturing (QIM) at (2005-06=100)

Month/ Year	2016-17	2017-18	2018-19	2019-20	2020-21	2021-22
July	284.0	327.0	290.8	259.7	294.2	346.3
August	287.7	336.4	265.5	220.9	238.5	368.7
September	281.5	330.9	311.3	266.7	295.4	387.1
October	291.4	355.7	287.0	277.0	315.6	400.5
November	317.1	343.2	273.3	280.3	320.5	434.6
December	302.8	341.5	265.2	223.7	350.6	415.7
January	286.1	374.0	321.3	263.8	347.2	458.6
February	283.3	324.5	309.0	313.2	336.1	447.6*
March	275.6	341.4	279.7	258.2	337.1	457.9
April	276.8	338.5	258.2	172.1	308.9	
May	283.9	311.3	248.2	199.8	282.5	
June	258.1	307.4	257.6	324.9	341.9	
Average (Geometric Mean)	285.4	335.5	279.7	251.3	312.4	

*Revised

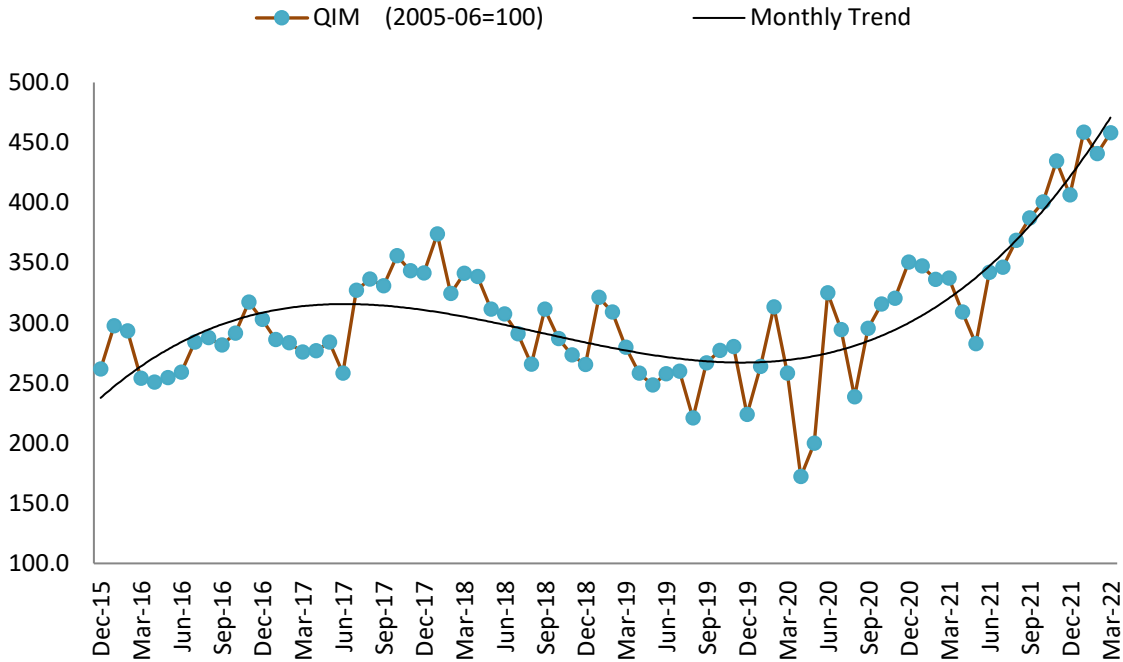


Figure 1: Trend of Quantum Index of Large Scale Manufacturing Industries at base year 2005-06

QIM index in last six months of current financial year 2020-21 is showing an increasing trend. Similarly, in month to month change last month growth reported significantly high around 2.29% for which major cause is the increase in seasonal item such as Sugar, Pharmaceutical, Cement, Fertiliser along with seasonal items the production of Air conditioners and Detergent Powder also increased in production of Motor cycles, Tractors, vans and Jeeps (Automobile product).

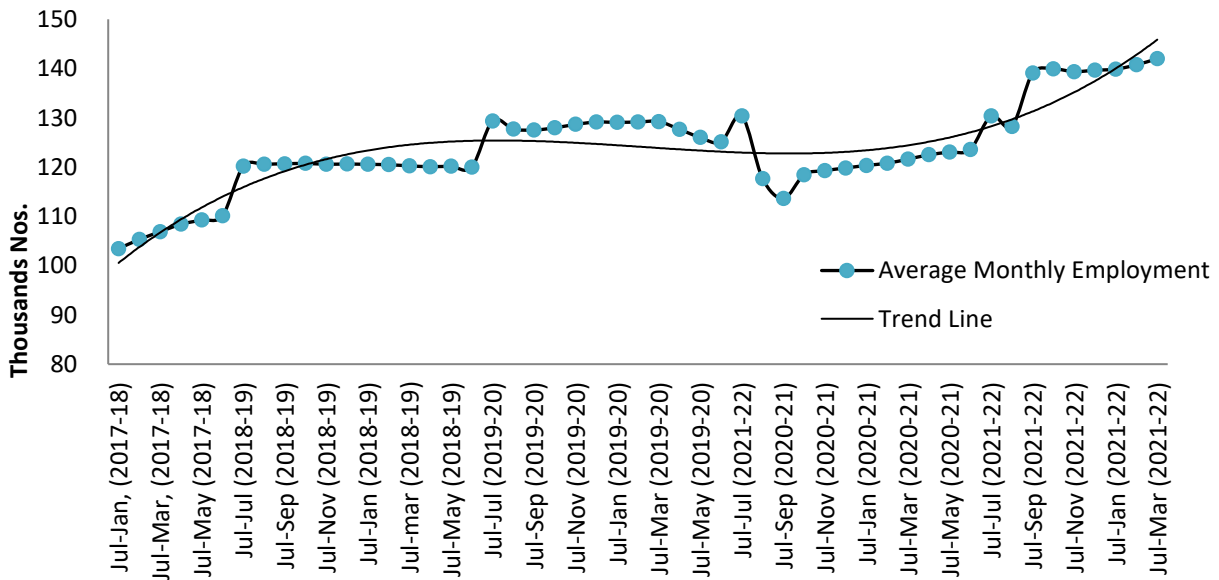


Figure 2: Trend of Average Monthly Employment in Large Scale Manufacturing Industries

Overall employment trend in last financial year 2020-21 is looking upward. In current month the employment is also slightly upward as compared to last month. Major sectors in which the employment is increased in the month of March, 2022 are Vegetable Ghee, Cotton Textile, Paint & Varnish, Tyres & Tubes while the major chunk of employment was increased in current month in sector Tyres & Tubes and Paint & Varnish.

Table 2: Production of Selected Items Pertaining to Large-Scale Manufacturing Sector, March-2022 Vs February-2022

Sr. No.	Industrial Sector/ Items	No. of Industrial Units as per CMI 2005-06	WEIGHT (2005-06)	Unit of Quantity	Production		Index of Production in Mar:2022 with Feb: 2022
					Mar:2022	Feb:2022	
1.	<u>VEGETABLE GHEE</u>	35	1.61				
i.	VEGETABLE GHEE		1.11	M.Tons	24,354	21,177	115.0
ii.	COOKING OIL		0.50	M.Tons	26,434	33,631	78.6
2.	<u>SUGAR</u>	26	4.32				
i.	SUGAR		4.32	M.Tons	607,254	447,067	135.8
3.	<u>TEA</u>	7	1.23				
i.	TEA		1.23	M.Tons	3,792	4,493	84.4
4.	<u>BEVERAGES</u>	13	0.85				
i.	BEVERAGES		0.85	"000" NOs.	47,611	35,503	134.1
ii.	WATER		0.85	"000" NOs.	17,996	15,649	115.0
5.	<u>COTTON TEXTILE</u>	133	13.65				
i.	COTTON YARN		9.10	M.Tons	41,823	36,368	115.0
ii.	COTTON FABRICS		4.13	"000" Sq. M	51,069	44,408	115.0
iii.	M.M.YARN		0.42	M.Tons	7,339	6,382	115.0
6.	<u>LEATHER TANNING</u>	30	0.07				
i.	UPPER LEATHER		0.07	"000" Sq. M.	585	509	114.9
7.	<u>COTTON GINNING & PRESSING</u>	85	3.30				
i.	C.G.& PRESSING		3.30	Bales	-	1,680,176	0.0
8.	<u>PAPER & PAPER BOARD</u>	6	0.01				
i.	PRINTING PAPER		0.01	M.Tons	728	591	123.2
ii.	WRITTEN PAPER		0.01	M.Tons	515	448	115.0
iii.	PACKING & OTHER PAPER		0.01	M.Tons	4,198	3,650	115.0
iv.	ADVERTISING MATERIAL		0.01	M.Tons	609	453	134.4
9.	<u>PHARMACEUTICALS</u>	78	6.37				
i.	TABLETS		1.67	"000" NOs.	1,488,398	1,294,259	115.0
ii.	LIQUIDS/SYRUPS		1.97	"000" Liters.	22,034	19,160	115.0
iii.	CAPSULES		1.36	"000" NOs.	150,243	130,646	115.0
iv.	INJECTIONS		1.22	"000" NOs.	61,241	61,246	100.0
v.	OINTMENT		0.15	KGs.	311,252	270,654	115.0
10.	<u>ACID, ALKALIES & SALT</u>	3	0.04				
i.	SULPHURIC ACID		0.04	M.Tons	2,476	2,153	115.0
11.	<u>FERTILIZER</u>	3	3.50				
i.	UREA		3.50	M.Tons	368,408	311,141	118.4
ii.	AMONIA		3.50	M.Tons	96,302	83,741	115.0
iii.	DAP		3.50	M.Tons	66,680	55,068	121.1
12.	<u>PAINTS & VARNISH</u>	9	0.32				
i.	PAINTS		0.32	M.Tons	239	236	101.3
ii.	VARNISH		0.32	"000" Liters.	35	20	175.0

13.	<u>SOAP</u>	38	1.66				
i.	WASHING SOAP		1.66	M.Tons	24,492	21,297	115.0
ii.	DETERGENT POWDER		1.66	M.Tons	20,157	18,397	109.6
iii.	TOILET SOAP		1.66	M.Tons	5,973	4,563	130.9
14.	<u>PETROLEUM PRODUCTS</u>	2	9.32				
i.	L.P.G		9.32	"000" Liters.	1,403	1,551	90.5
ii.	NAPHTHA SOLVENT		9.32	"000" Liters.	24,913	19,581	127.2
iii.	KEROSENE OIL		9.32	"000" Liters.	90	232	
iv.	H.S.D		9.32	"000" Liters.	126,285	112,791	112.0
v.	FURNACE OIL		9.32	"000" Liters.	20,297	22,018	92.2
vi.	ASPHALT 80-100		9.32	"000" Liters.	9,285	9,285	100.0
vii.	ASPHALT 60-70		9.32	"000" Liters.	9,285	9,285	100.0
viii.	MOTOR SPRIT		9.32	"000" Liters.	24,842	22,639	109.7
ix.	JET FUEL		9.32	"000" Liters.	19,272	5,300	363.6
x.	LUBRICATING OIL		9.32	"000" Liters.	16,972	16,279	104.3
xi.	OTHERS		0.00	"000" Liters.	21,497	18,888	113.8
15.	<u>TYRES & TUBES</u>	4	0.41				
i.	MOTOR TYRE		0.41	Nos.	182,214	182,214	100.0
ii.	MOTOR TUBE		0.41	Nos.	6,651	6,651	100.0
16.	<u>CEMENT</u>	11	3.86				
i.	CEMENT		3.86	M.Tons	968,317	945,947	102.4
17.	<u>M.S.PRODUCTS</u>	28	4.88				
i.	M.S PRODUCTS		4.88	M.Tons	19,724	19,702	100.1
18.	<u>STEEL PRODUCTS</u>	2	1.02				
i.	STEEL PRODUCTS		1.02	M.Tons	6,527	4,806	135.8
19.	<u>SAFETY RAZOR BLADE</u>	1	0.40				
i.	SAFETY RAZOR BLAD		0.04	"000" NOs.	61,974	45,021	137.7
20.	<u>SEWING MACHINES</u>	3	0.25				
i.	SEWING MACHINES		0.25	Nos.	646	760	85.0
21.	<u>ELEC. APPLIANCES</u>	3	2.21				
i.	REFRIGERATORS		0.11	Nos.	63,701	56,632	112.5
ii.	AIR-CONDITIONERS		0.60	Nos.	34,443	28,328	121.6
iii.	DEEP FREEZERS		0.50	Nos.	5,823	3,609	161.3
iv.	WASHING MACHINES		0.50	Nos.	30,880	32,800	94.1
v.	MICROWAVE OVEN		0.50	Nos.	41,514	40,386	102.8
22.	<u>AUTOMOBILE</u>	17	11.15				
i.	TRUCKS		2.71	Nos.	480	551	87.1
ii.	BUSES		0.77	Nos.	74	46	160.9
iii.	LCV'S		2.50	Nos.	1,585	1,425	111.2
iv.	MOTOR CYCLES		2.06	Nos.	133,582	127,317	104.9
v.	TRACTORS		0.25	Nos.	4,803	4,484	107.1
vi.	CARS		0.50	Nos.	22,898	18,263*	125.4
vii.	VANS & JEEPS		1.18	Nos.	2,433	1,897	128.3
viii.	THREE WHEELERS		1.18	Nos.	2,070	8,335	24.8
	Grand Total	537	70.43				

*Revised

Table 3: Production of Selected Items Pertaining to Large-Scale Manufacturing Sector, March-2022 Vs March-2021

Sr. No.	Industrial Sector/ Items	No. of Industrial Units as per CMI 2005-06	WEIGHT (2005-06)	Unit of Quantity	Production		Index of Production in Mar:2022 with Mar:2021
					Mar:2022	Mar:2021	
1.	<u>VEGETABLE GHEE</u>	35	1.61				
i.	VEGETABLE GHEE		1.11	M.Tons	24,354	33,945	71.7
ii.	COOKING OIL		0.50	M.Tons	26,434	17,248	153.3
2.	<u>SUGAR</u>	26	4.32				
i.	SUGAR		4.32	M.Tons	607,254	41,317	1469.7
3.	<u>TEA</u>	7	1.23				
i.	TEA		1.23	M.Tons	3,792	4,611	82.2
4.	<u>BEVERAGES</u>	13	0.85				
i.	BEVERAGES		0.85	"000" NOs.	47,611	92,045	51.7
ii.	WATER		0.85	"000" NOs.	17,996	14,508	124.0
5.	<u>COTTON TEXTILE</u>	133	13.65				
i.	COTTON YARN		9.10	M.Tons	41,823	17,199	243.2
ii.	COTTON FABRICS		4.13	"000" Sq. M	51,069	20,916	244.2
iii.	M.M.YARN		0.42	M.Tons	7,339	1,760	417.0
6.	<u>LEATHER TANNING</u>	30	0.07				
i.	UPPER LEATHER		0.07	"000" Sq. M.	585	928	63.0
7.	<u>COTTON GINNING & PRESSING</u>	85	3.30				
i.	C.G.& PRESSING		3.30	Bales	-	-	
8.	<u>PAPER & PAPER BOARD</u>	6	0.01				
i.	PRINTING PAPER		0.01	M.Tons	728	405	179.8
ii.	WRITTEN PAPER		0.01	M.Tons	515	448	115.0
iii.	PACKING & OTHER PAPER		0.01	M.Tons	4,198	2,104	199.5
iv.	ADVERTISING MATERIAL		0.01	M.Tons	609	32	1903.1
9.	<u>PHARMACEUTICALS</u>	78	6.37				
i.	TABLETS		1.67	"000" NOs.	1,488,398	2,153,992	69.1
ii.	LIQUIDS/SYRUPS		1.97	"000" Liters.	22,034	10,486	210.1
iii.	CAPSULS		1.36	"000" NOs.	150,243	401,285	37.4
iv.	INJECTIONS		1.22	"000" NOs.	61,241	129,344	47.3
v.	OINTMENT		0.15	KGs.	311,252	198,536	156.8
10.	<u>ACID, ALKALIES & SALT</u>	3	0.04				
i.	SULPHURIC ACID		0.04	M.Tons	2,476	2,653	93.3
11.	<u>FERTILIZER</u>	3	3.50				
i.	UREA		3.50	M.Tons	368,408	227,511	161.9
ii.	AMONIA		3.50	M.Tons	96,302	50,875	
iii.	DAP*		3.50	M.Tons	66,680	66,103	100.9
12.	<u>PAINTS & VARNISH</u>	9	0.32				
i.	PAINTS		0.32	M.Tons	239	84	284.5
ii.	VARNISH		0.32	"000" Liters.	35	298	11.7

13.	<u>SOAP</u>	38	1.66				
i.	WASHING SOAP		1.66	M.Tons	24,492	5,375	455.7
ii.	DETERGENT POWDER		1.66	M.Tons	20,157	14,288	141.1
iii.	TOILET SOAP		1.66	M.Tons	5,973	1,593	375.0
14.	<u>PETROLEUM PRODUCTS</u>	2	9.32				
i.	L.P.G		9.32	"000" Liters.	1,403	2,194	64.0
ii.	NAPHTHA SOLVENT		9.32	"000" Liters.	24,913	18,445	135.1
iii.	KEROSENE OIL		9.32	"000" Liters.	90	10	900.0
iv.	H.S.D		9.32	"000" Liters.	126,285	145,817	86.6
v.	FURNACE OIL		9.32	"000" Liters.	20,297	59,579	34.1
vi.	ASPHALT 80-100		9.32	"000" Liters.	9,285	2,423	383.2
vii.	ASPHALT 60-70		9.32	"000" Liters.	9,285	16,278	57.0
viii.	MOTOR SPRIT		9.32	"000" Liters.	24,842	23,425	106.0
ix.	JET FUEL		9.32	"000" Liters.	19,272	12,612	152.8
x.	LUBRICATING OIL		9.32	"000" Liters.	16,972	17,032	99.6
xi.	OTHERS		0.00	"000" Liters.	21,497	25,416	84.6
15.	<u>TYRES & TUBES</u>	4	0.41				
i.	MOTOR TYRE		0.41	Nos.	182,214	262,491	69.4
ii.	MOTOR TUBE		0.41	Nos.	6,651	18,367	36.2
16.	<u>CEMENT</u>	11	3.86				
i.	CEMENT		3.86	M.Tons	968,317	505,798	191.4
17.	<u>M.S.PRODUCTS</u>	28	4.88				
i.	M.S PRODUCTS		4.88	M.Tons	19,724	3,417	577.2
18.	<u>STEEL PRODUCTS</u>	2	1.02				
i.	STEEL PRODUCTS		1.02	M.Tons	6,527	2,489	262.2
19.	<u>SAFETY RAZOR BLADE</u>	1	0.40				
i.	SAFETY RAZOR BLAD		0.04	"000" NOs.	61,974	75,009	82.6
20.	<u>SEWING MACHINES</u>	3	0.25				
i.	SEWING MACHINES		0.25	Nos.	646	1,698	38.0
21.	<u>ELEC. APPLIANCES</u>	3	2.21				
i.	REFRIGERATORS		0.11	Nos.	63,701	56,825	112.1
ii.	AIR-CONDITIONERS		0.60	Nos.	34,443	10,378	331.9
iii.	DEEP FREEZERS		0.50	Nos.	5,823	2,506	232.4
iv.	WASHING MACHINES		0.50	Nos.	30,880	22,714	136.0
v.	MICROWAVE OVEN		0.50	Nos.	41,514	21,000	197.7
22.	<u>AUTOMOBILE</u>	17	11.15				
i.	TRUCKS		2.71	Nos.	480	488	98.4
ii.	BUSES		0.77	Nos.	74	60	123.3
iii.	LCV'S		2.50	Nos.	1,585	2,198	72.1
iv.	MOTOR CYCLES		2.06	Nos.	133,582	169,367	78.9
v.	TRACTORS		0.25	Nos.	4,803	5,454	88.1
vi.	CARS		0.50	Nos.	22,898	17,442	131.3
vii.	VANS & JEEPS		1.18	Nos.	2,433	1,739	139.9
viii.	THREE WHEELERS		1.18	Nos.	2,070	3,724	55.6
	Grand Total	537	70.43				

Table 4: Production of Selected Items Pertaining to Large-Scale Manufacturing Sector,
2021-22 (Jul to Mar) Vs 2020-21 (Jul to Mar)

Sr. No.	Industrial Sector/ Items	No. of Industrial Units as per CMI 2005-06	WEIGHT (2005-06)	Unit of Quantity	Production		Index of Production in 2021-22 (Jul-Mar) with 2020-21 (Jul-Mar)
					2021-22 (Jul-Mar)	2020-21 (Jul-Mar)	
1.	<u>VEGETABLE GHEE</u>	35	1.61				
i.	VEGETABLE GHEE		1.11	M.Tons	174,379	315,216	55.3
ii.	COOKING OIL		0.50	M.Tons	176,223	140,000	125.9
2.	<u>SUGAR</u>	26	4.32				
i.	SUGAR		4.32	M.Tons	869,493	1,239,756	70.1
3.	<u>TEA</u>	7	1.23				
i.	TEA		1.23	M.Tons	34,813	37,992	91.6
4.	<u>BEVERAGES</u>	13	0.85				
i.	BEVERAGES		0.85	"000" NOs.	442,889	818,978	54.1
ii.	WATER		0.85	"000" NOs.	150,247	147,173	102.1
5.	<u>COTTON TEXTILE</u>	133	13.65				
i.	COTTON YARN		9.10	M.Tons	176,907	174,486	101.4
ii.	COTTON FABRICS		4.13	"000" Sq. M	207,548	170,572	121.7
iii.	M.M.YARN		0.42	M.Tons	27,410	11,700	234.3
6.	<u>LEATHER TANNING</u>	30	0.07				
i.	UPPER LEATHER		0.07	"000" Sq. M.	3,574	7,071	50.5
7.	<u>COTTON GINNING & PRESSING</u>	85	3.30				
i.	C.G.& PRESSING		3.30	Bales	7,910,662	4,429,107	178.6
8.	<u>PAPER & PAPER BOARD</u>	6	0.01				
i.	PRINTING PAPER		0.01	M.Tons	2,697	2,830	95.3
ii.	WRITTEN PAPER		0.01	M.Tons	2,759	2,103	131.2
iii.	PACKING & OTHER PAPER		0.01	M.Tons	16,026	15,611	102.7
iv.	ADVERTISING MATERIAL		0.01	M.Tons	946	231	409.5
9.	<u>PHARMACEUTICALS</u>	78	6.37				
i.	TABLETS		1.67	"000" NOs.	9,418,303	17,877,389	52.7
ii.	LIQUIDS/SYRUPS		1.97	"000" Liters.	92,068	71,978	127.9
iii.	CAPSULES		1.36	"000" NOs.	1,218,464	3,189,805	38.2
iv.	INJECTIONS		1.22	"000" NOs.	603,186	1,101,863	54.7
v.	OINTMENT		0.15	KGs.	1,479,530	1,837,538	80.5
10.	<u>ACID, ALKALIES & SALT</u>	3	0.04				
i.	SULPHURIC ACID		0.04	M.Tons	19,691	19,043	103.4
11.	<u>FERTILIZER</u>	3	3.50				
i.	UREA		3.50	M.Tons	2,309,439	2,007,069	115.1
ii.	AMONIA		3.50	M.Tons	497,258	321,182	154.8
iii.	DAP		3.50	M.Tons	615,455	545,869	112.7
12.	<u>PAINTS & VARNISH</u>	9	0.32				
i.	PAINTS		0.32	M.Tons	1,673	701	238.6
ii.	VARNISH		0.32	"000" Liters.	106	2,358	4.5

13.	<u>SOAP</u>	38	1.66				
i.	WASHING SOAP		1.66	M.Tons	93,110	54,414	171.1
ii.	DETERGENT POWDER		1.66	M.Tons	88,636	129,087	68.7
iii.	TOILET SOAP		1.66	M.Tons	37,828	16,487	229.4
14.	<u>PETROLEUM PRODUCTS</u>	2	9.32				
i.	L.P.G		9.32	"000" Liters.	21,583	18,056	119.5
ii.	NAPHTHA SOLVENT		9.32	"000" Liters.	310,766	158,117	196.5
iii.	KEROSENE OIL		9.32	"000" Liters.	3,751	2,029	184.8
iv.	H.S.D		9.32	"000" Liters.	881,793	1,152,658	76.5
v.	FURNACE OIL		9.32	"000" Liters.	386,217	471,602	81.9
vi.	ASPHALT 80-100		9.32	"000" Liters.	32,044	7,341	436.5
vii.	ASPHALT 60-70		9.32	"000" Liters.	85,672	57,814	148.2
viii.	MOTOR SPRIT		9.32	"000" Liters.	174,875	191,902	91.1
ix.	JET FUEL		9.32	"000" Liters.	136,246	109,428	124.5
x.	LUBRICATING OIL		9.32	"000" Liters.	142,216	125,678	113.2
xi.	OTHERS		0.00	"000" Liters.	316,899	224,998	140.8
15.	<u>TYRES & TUBES</u>	4	0.41				
i.	MOTOR TYRE		0.41	Nos.	1,634,414	2,094,847	78.0
ii.	MOTOR TUBE		0.41	Nos.	143,235	193,614	74.0
16.	<u>CEMENT</u>	11	3.86				
i.	CEMENT		3.86	M.Tons	4,359,878	4,265,527	102.2
17.	<u>M.S.PRODUCTS</u>	28	4.88				
i.	M.S PRODUCTS		4.88	M.Tons	93,907	49,740	188.8
18.	<u>STEEL PRODUCTS</u>	2	1.02				
i.	STEEL PRODUCTS		1.02	M.Tons	21,491	15,387	139.7
19.	<u>SAFETY RAZOR BLADE</u>	1	0.40				
i.	SAFETY RAZOR BLAD		0.04	"000" NOs.	329,737	670,146	49.2
20.	<u>SEWING MACHINES</u>	3	0.25				
i.	SEWING MACHINES		0.25	Nos.	9,094	13,449	67.6
21.	<u>ELEC. APPLIANCES</u>	3	2.21				
i.	REFRIGERATORS		0.11	Nos.	467,167	397,177	117.6
ii.	AIR-CONDITIONERS		0.60	Nos.	173,124	92,399	187.4
iii.	DEEP FREEZERS		0.50	Nos.	27,752	13,348	207.9
iv.	WASHING MACHINES		0.50	Nos.	263,662	263,924	99.9
v.	MICROWAVE OVEN		0.50	Nos.	320,626	338,074	94.8
22.	<u>AUTOMOBILE</u>	17	11.15				
i.	TRUCKS		2.71	Nos.	3,261	2,407	135.5
ii.	BUSES		0.77	Nos.	313	443	70.7
iii.	LCV'S		2.50	Nos.	14,742	14,234	103.6
iv.	MOTOR CYCLES		2.06	Nos.	1,052,441	1,502,806	70.0
v.	TRACTORS		0.25	Nos.	32,585	35,883	90.8
vi.	CARS		0.50	Nos.	125,605	107,135	117.2
vii.	VANS & JEEPS		1.18	Nos.	9,754	8,410	116.0
viii.	THREE WHEELERS		1.18	Nos.	27,285	41,002	66.5
Grand Total		537	70.43				

Table 5: Employment in Selected Large-Scale Manufacturing Sector, Mar-2022 Vs Feb-2022

Sr. No.	Industrial Sector/ Items	No. of Industrial Units as per CMI 2005-06	Total Employees		Production Worker	
			Mar:2022	Feb:2022	Mar:2022	Feb:2022
1	<u>VEGETABLE GHEE</u>	35	2442	2,244	1958	1,867
2	<u>SUGAR</u>	26	13083	14,868	8659	9,270
3	<u>TEA</u>	7	1410	1,382	1185	1,157
4	<u>BEVERAGES</u>	13	4408	4,336	1176	1,101
5	<u>COTTON TEXTILE</u>	133	78199	72,117	67648	63,858
6	<u>LEATHER TANNING</u>	30	4685	4,685	4125	4,125
7	<u>PAPER & PAPER BOARD</u>	6	2002	2,084	1426	1,473
8	<u>PHARMACEUTICALS</u>	78	16008	15,976	11146	11,082
9	<u>ACID, ALKALIES & SALT</u>	3	40	40	25	25
10	<u>FERTILIZER</u>	3	2661	2,633	1872	1,850
11	<u>PAINTS & VARNISH</u>	9	324	291	246	210
12	<u>SOAP</u>	38	3676	3,493	3387	3,304
13	<u>PETROLEUM PRODUCTS</u>	2	1308	1,329	996	1,017
14	<u>TYRES & TUBES</u>	4	2758	2,553	2060	2,030
15	<u>CEMENT</u>	11	2809	2,829	1843	1,848
16	<u>STEEL PRODUCTS</u>	2	189	210	121	141
17	<u>M.S PRODUCTS</u>	28	532	534	366	366
18	<u>SAFETY RAZOR BLAD</u>	1	558	556	516	516
19	<u>SEWING MACHINES</u>	3	62	72	52	63
20	<u>ELEC. APPLIANCES</u>	3	1525	1,525	1304	1,304
21	<u>AUTOMOBILE</u>	17	10131	9,864	7568	7,195
22	<u>STORAGE BATTERIES</u>	4	3305	3,315	2930	2,940
	Grand Total	456	152,115	146,937	120,607	116,740

Table 6: Employment in Selected Large-Scale Manufacturing Sector, March-2022 Vs March-2021

Sr. No.	Industrial Sector/ Items	No. of Industrial Units as per CMI 2005-06	Employees		Production Worker	
			Mar:2022	Mar:2021	Mar:2022	Mar:2021
1	<u>VEGETABLE GHEE</u>	35	2442	2,191	1958	1,576
2	<u>SUGAR</u>	26	13083	8,890	8659	5,706
3	<u>TEA</u>	7	1410	3,152	1185	2,721
4	<u>BEVERAGES</u>	13	4408	3,853	1176	1,436
5	<u>COTTON TEXTILE</u>	133	78199	53,447	67648	40,824
6	<u>LEATHER TANNING</u>	30	4685	6,597	4125	5,541
7	<u>PAPER & PAPER BOARD</u>	6	2002	1,954	1426	1,404
8	<u>PHARMACEUTICALS</u>	78	16008	11,804	11146	7,407
9	<u>ACID, ALKALIES & SALT</u>	3	40	18	25	13
10	<u>FERTILIZER</u>	3	2661	980	1872	821
11	<u>PAINTS & VARNISH</u>	9	324	103	246	50
12	<u>SOAP</u>	38	3676	2,701	3387	1,567
13	<u>PETROLEUM PRODUCTS</u>	2	1308	429	996	333
14	<u>TYRES & TUBES</u>	4	2758	5,732	2060	4,072
15	<u>CEMENT</u>	11	2809	4,790	1843	2,042
16	<u>STEEL PRODUCTS</u>	2	189	224	121	143
17	<u>M.S PRODUCTS</u>	28	532	1,082	366	844
18	<u>SAFETY RAZOR BLAD</u>	1	558	284	516	262
19	<u>SEWING MACHINES</u>	3	62	411	52	354
20	<u>ELECTRICAL APPLIANCES</u>	3	1525	750	1304	663
21	<u>AUTOMOBILE</u>	17	10131	16,906	7568	11,851
22	<u>STORAGE BATTERIES</u>	4	3305	1,817	2930	2,376
Grand Total		456	152,115	128,115	120,607	92,005

*Table 7: Average Monthly Employment in Selected Large Scale Manufacturing Sector,
2021-22 (Jul to Mar) Vs 2020-21 (Jul to Mar)*

Sr. No.	Industrial Sector/ Items	No. of Industrial Units as per CMI 2005-06	Average Monthly Total Employment		Average Monthly Production Worker	
			(Jul-Mar) 2021-22	(Jul-Mar) 2020-21	(Jul-Mar) 2021-22	(Jul-Mar) 2020-21
1	<u>VEGETABLE GHEE</u>	35	2,057	2,451	1,578	1,448
2	<u>SUGAR</u>	26	12,296	8,186	7,698	5,957
3	<u>TEA</u>	7	2,043	3,117	1,699	2,676
4	<u>BEVERAGES</u>	13	5,017	3,370	1,419	1,247
5	<u>COTTON TEXTILE</u>	133	63,966	53,415	54,732	41,017
6	<u>LEATHER TANNING</u>	30	6,647	6,675	6,214	5,597
7	<u>PAPER & PAPER BOARD</u>	6	1,930	2,113	1,373	1,507
8	<u>PHARMACEUTICALS</u>	78	15,940	7,174	7,667	3,664
9	<u>ACID, ALKALIES & SALT</u>	3	40	18	25	13
10	<u>FERTILIZER</u>	3	2,353	979	1,694	815
11	<u>PAINTS & VARNISH</u>	9	190	104	129	51
12	<u>SOAP</u>	38	2,511	2,249	2,307	1,637
13	<u>PETROLEUM PRODUCTS</u>	2	1,194	431	932	333
14	<u>TYRES & TUBES</u>	4	4,529	5,684	3,122	4,045
15	<u>CEMENT</u>	11	2,853	4,988	1,856	2,178
16	<u>STEEL PRODUCTS</u>	1	230	177	149	99
17	<u>M.S PRODUCTS</u>	28	742	1,081	539	875
18	<u>SAFETY RAZOR BLAD</u>	1	433	277	401	251
19	<u>SEWING MACHINES</u>	3	180	410	156	354
20	<u>ELECTRICAL APPLIANCES</u>	3	1,372	750	1,149	663
21	<u>AUTOMOBILE</u>	17	12,841	16,209	9,806	8,990
22	<u>STORAGE BATTERIES</u>	4	2,656	1,748	2,858	1,699
Grand Total		455	142,019	121,606	107,504	85,115

Annexure – A Proforma/ Questionnaire



GOVERNMENT OF SINDH
PLANNING & DEVELOPMENT DEPARTMENT
BUREAU OF STATISTICS

www.sindhbos.gov.pk

Street-13, Block-8, Kehkashan Clifton, Karachi-75600, P.O.Box# 3879

021-99251259 021-35296415 m.kazimjafri@hotmail.com

The information supplied will be kept strictly confidential and will be used for statistical purpose only.	REPORT FOR	
	MONTH	YEAR

MONTHLY SURVEY OF INDUSTRIAL PRODUCTION AND EMPLOYMENT IN SINDH.

INDUSTRY CODE Estb: Code

LOCATION CODE

PART-I GENERAL PARTICULARS

- i) Name and Address of the Establishment _____
- ii) Name, Designation, Telephone, Cell and _____
- Fax# of the person to be contacted. _____
- iii) Website and E-mail Address _____

PART-II PRODUCTION DATA

S.No	Major Items of Production	Code	Unit of Quantity	Code	Previous Month	Current Month	Reasons of Growth/ Decline

PART-III WORKING DAYS AND EMPLOYMENT

- i) No. of days establishment worked _____
- ii) No. of Production workers. Male _____ Female _____ Total _____
- iii) No. of Non production workers Male _____ Female _____ Total _____
- TOTAL (ii + iii) Male _____ Female _____ Total _____

Note: Production Workers mean those who are directly associated with production. It includes those engaged in manufacturing, assembling packing repairing etc. Working Supervisor should also be included, Non production worker mean those who are not directly associated with production it includes Administrative Clerical and Services Staff like Chowkidar, Driver and Sweeper.

Signature _____
Designation _____
Date _____

Annexure – B Important Definitions

Large Scale Manufacturing Industries

Establishments where 10 or more employees are working are called large Scale Manufacturing Industries.

Employees

Employees mean all persons whether part time or full time who work in the establishments and receive remuneration in cash or in kind. Working proprietors, unpaid family workers and home workers are excluded from the category of employee. There are two types of employees Production Workers and Non-Production Workers.

- Production Workers

Are engaged in work directly associated with production like manufacturing, assembling, packing, repairing etc. Working supervisors and persons engaged for repairs and maintenance are also included.

- Non-Production Workers

Include administrative and professional employees, white-collar office employees, drivers, watchmen/guards, peons, sweepers, office boys, etc.

Annexure – C Data Users

- Ministry of Industries & Production, Government of Pakistan.
- Planning & Development Department, Government of Sindh.
- Pakistan Bureau of Statistics, Government of Pakistan.
- State Bank of Pakistan.
- Research & Training Wing, Planning & Development Department, Government of Sindh.



(Industries Section)
Bureau of Statistics
Planning & Development
Department
Government of Sindh
m.kazimjafri@hotmail.com

ST:13 Block-8 Kehkashan Clifton, Ch. Kahliqz-zaman road, Karachi
Ph. 021-99251259, Email: ddindustries.sindhbos@gmail.com
www.sindhbos.gov.pk