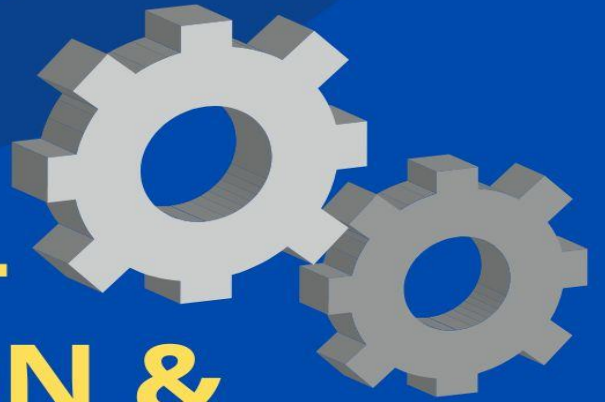




MIPE February, 2024

MONTHLY INDUSTRIAL PRODUCTION & EMPLOYMENT SURVEY



Monthly Industrial Production & Employment Survey (MIPE) February, 2024

**Industries Section
Bureau of Statistics
Planning & Development Department
Government of Sindh**

<https://sbos.sindh.gov.pk>
ddindustries.sindhbos@gmail.com

ST:13 Block-8 Kehkashan Clifton, Ch. Kahliqz-zaman road, Karachi

Preface

Monthly Industrial Production and Employment Survey (MIPE) is being conducted/ published by Sindh Bureau of Statistics on regular basis. This report provides important statistics in respect of industrial production & employment of large Scale Manufacturing (LSM) industries in Sindh.

This report contains information on 66 items manufactured in 18 selected large scale industrial sectors covering 641 industrial establishments (selection on the basis of CMI 2015-16). These industries account for 84.0% of total value added of large scale manufacturing sector in Sindh.

MIPE Report provides information regarding General Index and Quantum Index of Manufacturing (QIM) to base period 2015-16, and analytical analysis on the current status of production and employment in manufacturing sector.

All the efforts are made to improve the industrial statistics and hope this report would prove useful to policy makers, planners, researchers and other data users. Suggestion/ recommendations from the users will always be welcomed and appreciated.

Dr. Ishaque Ahmed Ansari

Director General
Bureau of Statistics
Planning & Development Department
Government of Sindh



Table of Contents

PREFACE	III
LIST OF TABLES.....	V
LIST OF FIGURES.....	V
LIST OF EQUATIONS.....	V
MIPE TEAM	VI
1. INTRODUCTION	1
2. MANUFACTURING ACTIVITY	1
3. SCOPE AND COVERAGE	1
4. INDUSTRIAL CLASSIFICATION	3
5. FRAME OF SINDH CMI 2015-16	3
6. METHODOLOGY AND QUESTIONNAIRE	4
7. QUANTUM INDEX OF MANUFACTURING (QIM)	5
8. REPORT ANALYSIS	6
ANNEXURE – A PROFORMA/ QUESTIONNAIRE	17
ANNEXURE – B IMPORTANT DEFINITIONS	18
ANNEXURE – C DATA USERS	19
ANNEXURE – D CENSUS VALUE ADDED AND CONTRIBUTION TO GDP	20
ANNEXURE – E ITEM WISE PRODUCTION WEIGHTS FOR SINDH.....	25
ANNEXURE – F MONTHLY ITEM WISE TIME SERIES OF PRODUCTION.....	27
ANNEXURE – G MONTHLY ITEM WISE TIME SERIES OF TOTAL EMPLOYMENT	30

List of Tables

<i>TABLE 1. DISTRICT WISE NUMBER OF MANUFACTURING ESTABLISHMENTS COVERED IN CMI</i>	3
<i>TABLE 2. DISTRICT WISE NUMBER OF MANUFACTURING ESTABLISHMENTS COVERED IN CMIS</i>	4
<i>TABLE 3: SERIES OF QUANTUM INDEX OF MANUFACTURING (QIM) AT (2015-16=100)</i>	6
<i>TABLE 4: PRODUCTION OF SELECTED ITEMS PERTAINING TO LARGE-SCALE MANUFACTURING SECTOR, FEB-2024 VS JAN-2024</i>	8
<i>TABLE 5: PRODUCTION OF SELECTED ITEMS PERTAINING TO LARGE-SCALE MANUFACTURING SECTOR, FEB-2024 VS FEB-2023</i>	10
<i>TABLE 6: PRODUCTION OF SELECTED ITEMS PERTAINING TO LARGE-SCALE MANUFACTURING SECTOR, (JUL-FEB) 2023-24 VS (JUL-FEB) 2022-23</i>	12
<i>TABLE 7: EMPLOYMENT IN SELECTED LARGE-SCALE MANUFACTURING SECTOR, FEB-2024 VS JAN-2024</i>	14
<i>TABLE 8: EMPLOYMENT IN SELECTED LARGE-SCALE MANUFACTURING SECTOR, FEB-2024 VS FEB-2023</i>	15
<i>TABLE 9: GENDER WISE PERCENTAGE OF EMPLOYMENT IN SELECTED LARGE-SCALE MANUFACTURING SECTOR, FEB-2024</i>	16

List of Figures

<i>FIGURE 1: TREND OF QUANTUM INDEX OF LARGE SCALE MANUFACTURING INDUSTRIES AT BASE YEAR 2015-16</i>	7
<i>FIGURE 2: TREND OF AVERAGE MONTHLY EMPLOYMENT IN LARGE SCALE MANUFACTURING INDUSTRIES QIM 2015-16</i>	7
<i>FIGURE 3: CHART OF GENDER WISE PERCENTAGES OF EMPLOYMENT IN LARGE SCALE MANUFACTURING INDUSTRIES</i>	16

List of Equations

<i>Equation 1 Laspayer's Index</i>	5
--	---

MIPE Team

➤ Analyst and Report Contributors

Mr. Muhammad Kazim Jafri	Deputy Director	BoS Karachi
Ms. Rukhsana Aziz	Statistical Officer	BoS Karachi

➤ Data Collection Team

Mr. Walli Ullah Qazi	Deputy Director	BoS Sukkur
Mr. Hazoor Bux Bhutto	Deputy Director	BoS Sukkur
Mr. Zafar Ali Ansari	Deputy Director	BoS Shaheed Benazir Abad
Mr. Ishfaque Ahmed Solangi	Statistical Officer	BoS Jamshoro
Mr. Kaleemullah Abbasi	Statistical Officer	BoS Khairpur
Mr. Shoukat Ali Baloch	Statistical Officer	BoS Shikarpur
Mr. Noor Din Abbasi	Statistical Officer	BoS Thatta
Mr. Agha Waheed Ali	Statistical Officer	BoS Ghotki
Mr. Shoukat Ali Arain	Statistical Officer	BoS Sujawal
Mr. Waseem Ahmed Siddiqui	Statistical Officer	BoS M.P. Sakro
Mr. Mumtaz Ali Bozdar	Statistical Officer	BoS Mirpurkhas
Mr. Mushtaque Ahmed Mahar	Assistant Director	BoS Mirpurkhas
Mr. Muhammad Nadeem	Statistical Officer	BoS Karachi
Mr. Muhammad Akram Bhatti	Statistical Computer	BoS Karachi
Mr. Sajjad Ali	Enumerator	BoS Karachi
Mr. Muhammad Sultan	Jr. Clerk	BoS Karachi
Mr. Muhammad Sarfaraz	Data Processing Assistant	BoS Karachi
Mr. Muhammad Urs	Assistant	BoS Hyderabad

1. Introduction

A robust manufacturing sector promotes domestic production, exports and generates employment, hence stimulates the overall growth of an economy. During FY2023, the Pakistan's economy faced international supply shocks, coupled with domestic natural disaster shock (Flood-2022), these shocks aggravated the growth vulnerability. Pakistan's growth performance in FY2023 has been negatively affected by a decline in the manufacturing sector output. In Pakistan, manufacturing sector contributes 12.01% to Gross Domestic Product (GDP) dominates the overall manufacturing sector and the sector employs 14.9 % of the country's labor force. Pakistan's national accounts divide manufacturing sector into three main categories: Large Scale Manufacturing (LSM), Small Scale Manufacturing (SSM), and Slaughtering. LSM is comprised of businesses with ten or more employees and accounts for 78.4 percent of the Quantum Index of Manufacturing (QIM), which measures LSM performance. The QIM is derived from the Census of Manufacturing Industries conducted in 2015-16. It provides the measure of manufacturing industry outputs and operating status and reliable source for updating the Business Register (BR). According to the Pakistan Economic Survey 2022-23: The industrial sector posted a negative growth of 2.94 percent in FY2023. Industrial sector performance is more dependent on the Manufacturing sector which has a share of 65.0 percent in the industry. LSM is reflected by Quantum Index Numbers (QIM) data and overall, the Manufacturing sector posted a growth of -3.94 percent. For the compilation of Quantum Index of Manufacturing (QIM) of Pakistan as well as the Sindh is concerned, a fresh sample of 641 units was drawn by the Pakistan Bureau of Statistics (PBS) for the computation of Sindh QIM and the sample covers 84% of total of Sindh.

2. Manufacturing Activity

Manufacturing activity is can be defined as the process of making new organic or inorganic articles by chemical or mechanical conversion whether the efforts are carried out by hand or through driven machine at any place either in a factory or in the worker's house. Manufacturing activities include treating, processing, assembling, repairing and services

3. Scope and Coverage

The Census of Large-Scale Manufacturing Industries is conducted by Pakistan Bureau of Statistics (PBS) after every five years with manufacturing establishments classified under (10 to 33 division) Pakistan Standard Industrial Classification (PSIC-2010) based on UN-ISIC.Rev.4. Quantum Index of

Manufacturing (QIM) is a measure of LSM performance with 84.0 weight in overall LSM and derived from the Census of Manufacturing Industries (CMI) 2015-16.

The role of Sindh province in the Large Scale Manufacturing is very vital. However, Sindh QIM's trend of overall manufacturing index has random behavior with ups and downs; which main cause in last year is COVID-19 and recession in economy. As the Karachi is the largest metropolitan city of Pakistan, according to Karachi Chamber of Commerce and Industry (KCCI) it produces 15% with an annual Gross Domestic Product (GDP). Sindh Business Register (SBR), 2017 established by Sindh Bureau of Statistics, Planning & Development Department during the field operation CMI 2015-16 started from January, 2017 shows that 67% establishments/ factories are located in Karachi Division and remaining 33% are located in other districts of Sindh.

For the timely and quality industrial statistics, Sindh Bureau of Statistics, Planning & Development Department has been conducting Monthly Survey of Industrial Production and Employment (MIPE). This survey report includes 66 items manufactured in 18 large scale Industrial sectors from 6,299 establishments/ factories in Sindh.

Table. 1. District wise number of Manufacturing Establishments covered in CMI

S/No.	District	2005-06	2015-16
01	Badin	6	131
02	Dadu	83	79
03	Ghotki	41	60
04	Hyderabad	98	397
05	Jacobabad	97	10
06	Jamshoro	-	125 ¹
07	Karachi Central	1,198*	1,054
08	Karachi East		252
09	Karachi Korangi		1,123
10	Karachi Malir		181
11	Karachi South		322
12	Karachi West		1,383
13	Kashmore	-	42 ²
14	Khairpur	15	44
15	Larkana	84	97
16	Matiari	-	11
17	MirpurKhas	22	53
18	NaushahroFeroze	18	51
19	Sanghar	43	138
20	Kamber Shahdad Kot	-	82 ²
21	Shaheed Benazirabad	24	115
22	Shikarpur	25	68
23	Sukkur	54	157
24	Tando Allahyar	-	49 ³
25	Tando Muhammad Khan	-	21 ³
26	Tharparkar	-	25 ⁴
27	Thatta	17	186
28	Umer Kot	-	43 ⁴
	Total	1,825	6,299

*Number of establishments combined for overall Karachi in CMI 2005-06.

1. The district was created after the CMI 2005-06, from Dadu district.
2. These district was created after the CMI 2005-06, from Jacobabad district.
3. These district was created after the CMI 2005-06, from Hyderabad district.
4. These district was created after the CMI 2005-06, from Mirpurkhas district. *Source: CMI 2005-06 & 2015-16*

4. Industrial Classification

For classification of manufacturing activities, Pakistan Standard Industrial Classification (PSIC) 2010, obtained from UN International Standard Industrial Classification ISIC Rev-4, has been used. The PSIC 2010 is an updated version of ISIC Rev.4 from 4 digits to 5-digit level.

5. Frame of Sindh CMI 2015-16

In the Census of Large-Scale Manufacturing Industries (CMI 2015-16) the total frame of LSM stands at 6,299. Sindh Bureau of Statistics has covered 2,517 which is 40% response.

Table. 2. District wise number of Manufacturing Establishments covered in CMIs

Major Industry Groups	No. of Covered Establishments		
	Pakistan	Sindh	
	2015-16	2005-06	2015-16
Food Manufacturing	3638	556	1,682
Beverages	80	13	38
Tobacco	14	3	10
Textiles	4887	447	1,479
Wearing Apparel (Except Footwear)	1571	165	652
Leather & Leather Products including Footwear	655	30	111
Wood & Wood Products	362	19	29
Furniture	1154	17	31
Paper and Paper Products	492	29	202
Printing & Publishing	275	37	121
Drugs and Pharmaceutical Products	409	78	211
Industrial Chemicals	590	66	265
Petroleum & Miscellaneous Products	44	11	30
Rubber Products	801	51	215
Other Non-Metallic Mineral Products	3949	35	548
Iron, Steel & Non-ferous Metals	656	44	126
Fabricated Metal Products	1245	42	53
Non-Electrical Machinery	624	43	97
Electrical Machinery and Supplies	498	17	87
Vehicles, Transport and Equipment's	653	69	248
Scientific, Photographic & Optical	28	4	6
All others	1087	49	164
Total	23,712	1,825	6,299

Source: CMI 2005-06 & 2015-16

6. Methodology and Questionnaire

6.1. Questionnaire/ Proforma

A questionnaire/ Proforma is a research instrument consisting of a series of questions and other prompts for the purpose of gathering information from respondents. A pre-tested questionnaire is used for the data collection of industrial inputs related to employment and production, attached at Annex-A.

6.2. Methodology

The basic method of data collection for Sindh MIPE is the posting/ mailing of MIPE Questionnaires. More than 70% monthly returns are received to this Bureau through mail from industrial units. The non-responding or remaining establishments are visited by the officers/ officials of this Bureau, besides this the method of emailing, fax and telephonic approach are also used for collection of monthly returns and increase the response rate.

6.3. Editing

All the received returns are scrutinized for accuracy and consistency with previous data by the Industries Section of this Bureau. As per *Unit Calculation Sheet* different units of similar products are converted into the reporting units. In case of huge discrepancy between current and previous returns the factory management is approached to rectify these figures. In the absence establishment's return or non-availability of concerned person the average production of last month or the last month information is repeated for equivalence.

7. Quantum Index of Manufacturing (QIM)

A quantum index is an index based on quantity units of goods such as number or weight. Sindh bureau of Statistics is computing Index on Industrial Production using 2005-06 as base year. Index Series is generated by using Laspayer's Index.

$$QIM = \frac{\sum_{i=1}^n \frac{q_{im}}{q_{i0}} w_i}{\sum_{i=1}^n w_i} \times 100$$

Equation 1 Laspayer's Index

q_{im} = Production of i^{th} item during the current month

q_{i0} = Average Production of the same i^{th} item in the base period (2015-16)

w_i = Weight of the i^{th} item in the base period (2015-16)

$\sum_{i=1}^n w_i$ = Total Weight of 18 large scale industrial sectors covering 641 establishments in the base period with respect to the total value added of all the industries covered in CMI in the base year 2015-16.

8. Report Analysis

Summary findings on the basis of Index of Industrial Production are as follows:

- Overall Production in month of Feb, 2024 significantly decreased by 9.77% as compared to last month of Jan, 2024.
- Production in manufacturing sector for the month of Feb, 2024 is decreased drastically by 12.1% as compared to corresponding month of last year.
- Cumulative production from July-Feb, 2023-24 is less than 1% decline observed from previous year as compared to cumulative production of July to Jan, 2022-23.
- Large Scale Manufacturing employment during Feb, 2024 is marginally decreased by 0.61% as compared to previous month.
- Employment in manufacturing sector for the month of Feb, 2024 is decreased significantly by 3.37% as compared to corresponding month of last year.

Table 3: Series of Quantum Index of Manufacturing (QIM) at (2015-16=100)

Month/ Year	2021-22	2022-23	2023-24
July	106.3	148.9	141.2
August	107.1	148.2	132.6
September	107.5	147.4	145.5
October	126.7	147.4	147.6
November	134.7	140.4	148.2
December	134.0	148.5	153.5
January	136.1	154.5	152.5
February	139.8	156.6	137.6
March	149.8	167.0	
April	139.0	154.4	
May	147.1	139.1	
June	157.0	144.9	
Average (Geometric Mean)	131.0	149.6	

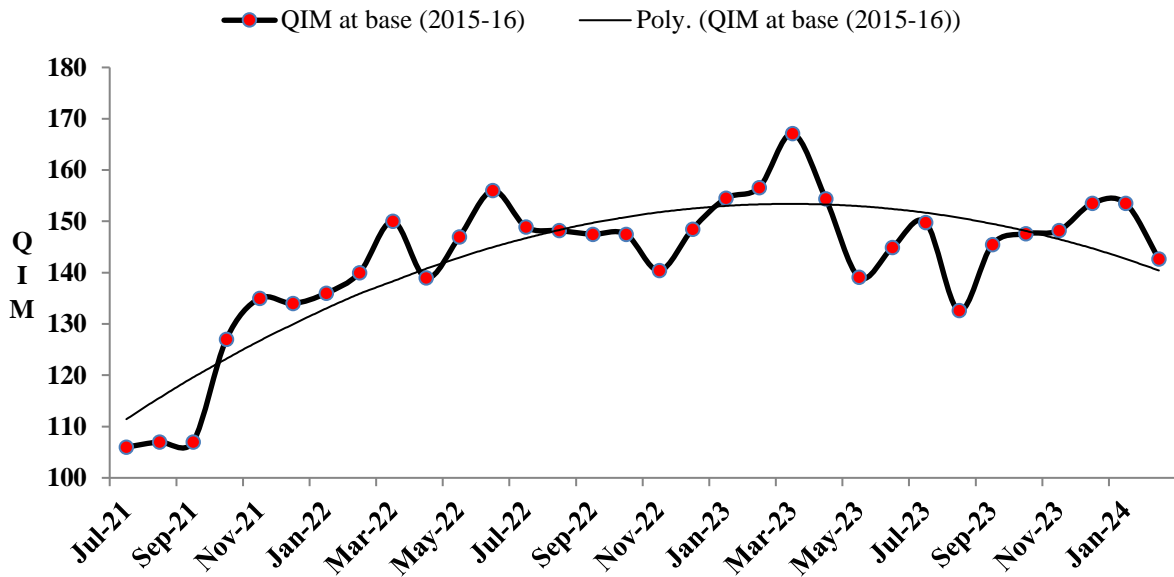


Figure 1: Trend of Quantum Index of Large Scale Manufacturing Industries at base year 2015-16

In the current months, the QIM index value decreased significantly while in last five months QIM index values continuously showed increasing trend. The production of petroleum has increased with respect to previous month and production of automobile has increased with respect to previous year.

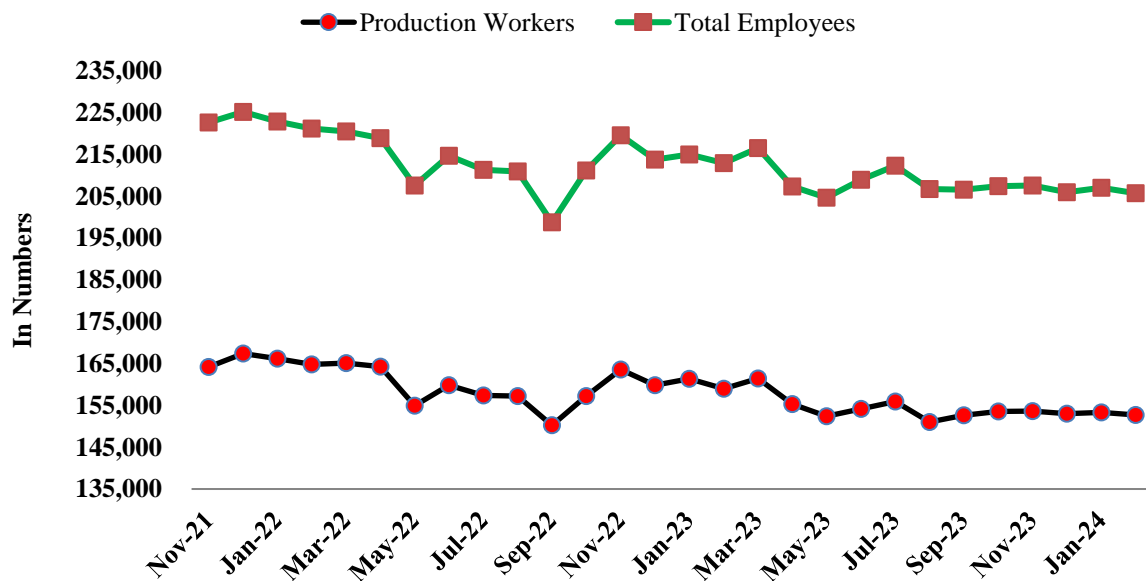


Figure 2: Trend of Average Monthly Employment in Large Scale Manufacturing Industries QIM 2015-16

In the current month, no significant change has been observed in employment compared to the previous month, but the production worker showed an increasing trend in petroleum and chemical sectors.

Table 4: Production of Selected Items Pertaining to Large-Scale Manufacturing Sector, Feb-2024 Vs Jan-2024

Sr. No.	Industrial Sector/ Items	PISIC	Sampled Industrial Units (CMI 2015-16)	WEIGHT (2015-16)	Unit of Quantity	Production		Index of Production in Feb:2024 with Jan: 2023
						Feb:2024	Jan:2024	
1.	<u>FOOD PRODUCTS</u>		209	12.3				
i.	Vegetable Ghee	10401	25	2.1	M.Tons	36,483	38,403	95.0
ii.	Cooking Oil	10401	25	2.1	M.Tons	35,036	34,876	100.5
iii.	Liquid Milk	10501	3	1.1	"000" Liters.	5,793	5,612	103.2
iv.	Wheat & Grain Milling	10611	36	0.6	M.Tons	40,170	29,390	136.7
v.	Rice Milling	10612	65	1.9	M.Tons	13,671	12,601	108.5
vi.	Biscuits & Rusk	10713	12	1.3	M.Tons	15,754	17,109	92.1
vii.	Sugar	10721	27	1.3	M.Tons	264,108	310,950	84.9
viii.	Chocolate & sugar confectionery	10732	6	0.6	M.Tons	388	330	117.6
ix.	Tea	10792	4	1.1	M.Tons	4,099	4,317	95.0
x.	Animal/ Poultry Feeds	10802	6	0.3	M.Tons	1,348	1,586	85.0
2.	<u>BEVERAGES</u>		7	0.5				
i.	Mineral/ Bottled Waters	11042	4	0.1	"000" NOs.	46,653	42,591	109.5
ii.	Soft Drinks	11043	3	0.4	"000" NOs.	40,290	34,948	115.3
3.	<u>TEXTILES</u>		128	17.6				
i.	Knitting Wool (Cotton Yarn)	13112	52	7.4	M.Tons	39,904	47,064	84.8
ii.	Woolen Worsted Cloth (Cotton Fabric)	13121	45	8.0	"000" Sq. M	66,831	78,389	85.3
iii.	Terry Towel and Bath Robes (MM Yarn)	13129	21	1.2	M.Tons	6,943	7,698	90.2
iv.	Woolen Blankets	13921	10	1.0	"000" NOs.	973	759	128.2
4.	<u>WEARING APPAREL</u>		56	10.0				
i.	Garments	14102	51	9.3	Dozen	290,234	317,922	91.3
ii.	Hosiery, socks, tights etc.	14302	5	0.7	Dozen	31,331	33,331	94.0
5.	<u>LEATHER & RELATED PRODUCTS</u>		15	0.4				
i.	Finished Leather/ Upper Leather	15111	15	0.4	"000" Sq. M.	399	433	92.1
6.	<u>WOOD & WOOD WORKS</u>		2	0.1				
i.	Plywood	16212	2	0.1	"000" Sq.ft	8	6	133.3
7.	<u>PAPER & PAPER PRODUCTS</u>		13	2.2				
i.	Paper/ Paper Board (Writing Paper)	17013	3	0.8	M.Tons	420	402	104.5
ii.	Corrugated paper/ paperboard containers (Packaging)	17021	10	1.4	M.Tons	4,287	4,428	96.8
8.	<u>PRINTING & RECORDED MEDIA</u>		17	0.9				
i.	Printing of Newspapers/ magazines	18111	5	0.5	M.Tons	413	422	97.9
ii.	Printing of books, brochures, maps etc. (Advertising Material)	18112	10	0.1	M.Tons	456	444	102.7
iii.	Printing of postage stamps, cheques etc. (Printing Papers)	18113	2	0.3	M.Tons	362	371	97.6
9.	<u>COKE & REFINED PETROLEUM PRODUCTS</u>		9	12.4				
i.	Motor Sprit	19201	3	5.6	"000" Liters.	28,739	28,739	100.0
ii.	Kerosene oil	19201	3	5.6	"000" Liters.	1,110	1,110	100.0
iii.	L.P.G	19203	9	0.1	"000" Liters.	2,368	2,105	112.5
iv.	Naphtha Solvent	19203	9	0.1	"000" Liters.	7,592	13,679	55.5
v.	H.S.D	19203	9	0.1	"000" Liters.	134,047	122,722	109.2
vi.	Furnace Oil	19203	9	0.1	"000" Liters.	58,952	52,348	112.6
vii.	ASPHALT 80-100	19203	9	0.1	"000" Liters.	4,911	6,597	74.4
viii.	ASPHALT 60-70	19203	9	0.1	"000" Liters.	1,387	8,273	16.8
ix.	Jet Fuel	19203	9	0.1	"000" Liters.	7,003	11,683	59.9

Sr. No.	Industrial Sector/ Items	PISIC	Sampled Industrial Units (CMI 2015-16)	WEIGHT (2015-16)	Unit of Quantity	Production		Index of Production in Feb:2024 with Jan: 2023
						Feb:2024	Jan:2024	
x.	Lubricating Oil	19203	9	0.1	"000" Liters.	7,003	11,683	59.9
xi.	Others Petroleum Products	19203	9	0.1	"000" Liters.	20,730	19,523	106.2
10.	<u>CHEMICALS & CHEMICALS PRODUCTS</u>		14	5.8				
i.	Sulphuric/ Hydrochloric Acid/ Alum Sulphate	20115	5	0.4	M.Tons	5,500	5,548	99.1
ii.	Urea	20121	3	1.1	M.Tons	243,913	243,913	100.0
iii.	Ammonia	20121	3	1.1	M.Tons	-	29,183	0.0
iv.	DAP	20121	3	1.1	M.Tons	29,183	21,678	134.6
v.	Washing Soap	20232	6	0.8	M.Tons	5,423	5,138	105.5
vi.	Toilet Soap	20232	6	0.8	M.Tons	4,098	3,880	105.6
vii.	Detergent Powder	20234	4	0.5	M.Tons	21,472	23,429	91.6
11.	<u>PHARMACEUTICAL PRODUCTS</u>		41	8.5				
i.	Tablets	21001	41	1.7	"000" NOs.	2,235,987	2,236,124	100.0
ii.	Liquid / Syrups	21001	41	1.7	"000" Liters.	38,357	38,657	99.2
iii.	Injections	21001	41	1.7	"000" NOs.	73,838	69,530	106.2
iv.	Capsules	21001	41	1.7	"000" NOs.	196,680	185,606	106.0
v.	Ointments	21001	41	1.7	KGs.	182,189	182,392	99.9
12.	<u>RUBBER & PLASTIC PRODUCTS</u>		23	1.8				
i.	Motor Tires	22111	2	0.3	Nos.	191,602	185,740	103.2
ii.	Plastic Products	22201	21	1.5	M.Tons	5,662	6,170	91.8
13.	<u>OTHER NON-METALIC MINERAL PRODUCTS</u>		19	1.7				
i.	Cement	23941	5	1.6	M.Tons	571,176	649,701	87.9
ii.	Marble	23961	14	0.1	M.Tons	411	447	91.9
14.	<u>BASIC IRON & STEEL METALS</u>		13	3.1				
i.	Steel Products	24104	3	0.3	M.Tons	14,877	17,334	85.8
ii.	M S Products	24106	10	2.8	M.Tons	13,916	13,539	102.8
15.	<u>FABRICATED METALS PRODUCTS</u>		1	0.4				
i.	Safety Razor Blades	25931	1	0.4	"000" Nos.	22,105	28,903	76.5
16.	<u>ELECTRICAL EQUIPMENT</u>		8	0.4				
i.	Insulated Wire & Cables	27320	8	0.4	M.Tons	3,279	3,028	108.3
17.	<u>MOTOR VEHICLES & PARTS</u>		60	5.8				
i.	Trucks	29101	13	0.4	Nos.	327	69	473.9
ii.	Buses	29101	13	0.4	Nos.	44	41	107.3
iii.	LCV'S	29101	13	0.4	Nos.	825	591	139.6
iv.	Tractors	29101	13	0.4	Nos.	4,194	4,111	102.0
v.	Cars	29101	13	0.4	Nos.	8,002	9,614	83.2
vi.	Vans & Jeep	29101	13	0.4	Nos.	778	1,475	52.7
vii.	Three Wheelers	29101	13	0.4	Nos.	2,384	2,683	88.9
viii.	Auto parts	29301	28	2.2	"000" Nos.	10,465	10,910	95.9
ix.	Motor Cycles	30911	19	0.5	Nos.	92,504	85,508	108.2
18.	<u>FURNITURE</u>		6	0.1				
i.	Sofa, Iron Chairs	31001	6	0.1	Nos.	384	372	103.2
			641	84.0				

Table 5: Production of Selected Items Pertaining to Large-Scale Manufacturing Sector, Feb-2024 Vs Feb-2023

Sr. No.	Industrial Sector/ Items	PISIC	Sampled Industrial Units (CMI 2015-16)	WEIGHT (2015-16)	Unit of Quantity	Production		Index of Production in Feb:2024 with Feb:2023
						Feb:2024	Feb:2023	
1.	<u>FOOD PRODUCTS</u>		209	12.3				
i.	Vegetable Ghee	10401	25	2.1	M.Tons	36,483	50,028	72.9
ii.	Cooking Oil	10401	25	2.1	M.Tons	35,036	29,172	120.1
iii.	Liquid Milk	10501	3	1.1	"000" Liters.	5,793	7,089	81.7
iv.	Wheat & Grain Milling	10611	36	0.6	M.Tons	40,170	27,013	148.7
v.	Rice Milling	10612	65	1.9	M.Tons	13,671	14,924	91.6
vi.	Biscuits & Rusk	10713	12	1.3	M.Tons	15,754	12,728	123.8
vii.	Sugar	10721	27	1.3	M.Tons	264,108	475,795	55.5
viii.	Chocolate & sugar confectionery	10732	6	0.6	M.Tons	388	366	106.0
ix.	Tea	10792	4	1.1	M.Tons	4,099	2,318	176.8
x.	Animal/ Poultry Feeds	10802	6	0.3	M.Tons	1,348	122	
2.	<u>BEVERAGES</u>		7	0.5				
i.	Mineral/ Bottled Waters	11042	4	0.1	"000" NOs.	46,653	46,707	99.9
ii.	Soft Drinks	11043	3	0.4	"000" NOs.	40,290	71,408	56.4
3.	<u>TEXTILES</u>		128	17.6				
i.	Knitting Wool (Cotton Yarn)	13112	52	7.4	M.Tons	39,904	45,293	88.1
ii.	Woolen Worsted Cloth (Cotton Fabric)	13121	45	8.0	"000" Sq. M	66,831	65,188	102.5
iii.	Terry Towel and Bath Robes (MM Yarn)	13129	21	1.2	M.Tons	6,943	15,167	45.8
iv.	Woolen Blankets	13921	10	1.0	"000" NOs.	973	1,828	53.2
4.	<u>WEARING APPAREL</u>		56	10.0				
i.	Garments	14102	51	9.3	Dozen	290,234	740,391	39.2
ii.	Hosiery, socks, tights etc.	14302	5	0.7	Dozen	31,331	68,695	45.6
5.	<u>LEATHER & RELATED PRODUCTS</u>		15	0.4				
i.	Finished Leather/ Upper Leather	15111	15	0.4	"000" Sq. M.	399	319	125.1
6.	<u>WOOD & WOOD WORKS</u>		2	0.1				
i.	Plywood	16212	2	0.1	"000"Sq.ft	8	12	66.7
7.	<u>PAPER & PAPER PRODUCTS</u>		13	2.2				
i.	Paper/ Paper Board (Writing Paper)	17013	3	0.8	M.Tons	420	363.0	115.7
ii.	Corrugated paper/ paperboard containers (Packaging)	17021	10	1.4	M.Tons	4,287	4514	95.0
8.	<u>PRINTING & RECORDED MEDIA</u>		17	0.9				
i.	Printing of Newspapers/ magazines	18111	5	0.5	M.Tons	413	524	78.8
ii.	Printing of books, brochures, maps etc. (Advertising Material)	18112	10	0.1	M.Tons	456	455	100.2
iii.	Printing of postage stamps, cheques etc. (Printing Papers)	18113	2	0.3	M.Tons	362	434	83.4
9.	<u>COKE & REFINED PETROLEUM PRODUCTS</u>		9	12.4				
i.	Motor Sprit	19201	3	5.6	"000" Liters.	28,739	16,069	178.8
ii.	Kerosene oil	19201	3	5.6	"000" Liters.	1,110	1,292	
iii.	L.P.G	19203	9	0.1	"000" Liters.	2,368	983	240.9
iv.	Naphtha Solvent	19203	9	0.1	"000" Liters.	7,592	5,625	135.0
v.	H.S.D	19203	9	0.1	"000" Liters.	134,047	97,928	136.9
vi.	Furnace Oil	19203	9	0.1	"000" Liters.	58,952	55,749	105.7
vii.	ASPHALT 80-100	19203	9	0.1	"000" Liters.	4,911	2,393	205.2
viii.	ASPHALT 60-70	19203	9	0.1	"000" Liters.	1,387	7,738	17.9

Sr. No.	Industrial Sector/ Items	PISIC	Sampled Industrial Units (CMI 2015-16)	WEIGHT (2015-16)	Unit of Quantity	Production		Index of Production in Feb:2024 with Feb:2023
						Feb:2024	Feb:2023	
ix.	Jet Fuel	19203	9	0.1	"000" Liters.	7,003	17,121	40.9
x.	Lubricating Oil	19203	9	0.1	"000" Liters.	7,003	11,169	62.7
xi.	Others Petroleum Products	19203	9	0.1	"000" Liters.	20,730	30,353	68.3
10.	<u>CHEMICALS & CHEMICALS PRODUCTS</u>		14	5.8				
i.	Sulphuric/ Hydrochloric Acid/ Alum Sulphate	20115	5	0.4	M.Tons	5,500	3,190	172.4
ii.	Urea	20121	3	1.1	M.Tons	243,913	325,473	74.9
iii.	Ammonia	20121	3	1.1	M.Tons	-	14,347	0.0
iv.	DAP	20121	3	1.1	M.Tons	29,183	18,928	154.2
v.	Washing Soap	20232	6	0.8	M.Tons	5,423	20,396	26.6
vi.	Toilet Soap	20232	6	0.8	M.Tons	4,098	4,431	92.5
vii.	Detergent Powder	20234	4	0.5	M.Tons	21,472	32,045	67.0
11.	<u>PHARMACEUTICAL PRODUCTS</u>		41	8.5				
i.	Tablets	21001	41	1.7	"000" NOs.	2,235,987	2,386,171	93.7
ii.	Liquid / Syrups	21001	41	1.7	"000" Liters.	38,357	40,893	93.8
iii.	Injections	21001	41	1.7	"000" NOs.	73,838	65,228	113.2
iv.	Capsules	21001	41	1.7	"000" NOs.	196,680	190,593	103.2
v.	Ointments	21001	41	1.7	KGs.	182,189	300,111	60.7
12.	<u>RUBBER & PLASTIC PRODUCTS</u>		23	1.8				
i.	Motor Tires	22111	2	0.3	Nos.	191,602	182,502	105.0
ii.	Plastic Products	22201	21	1.5	M.Tons	5,662	5,060	111.9
13.	<u>OTHER NON-METALIC MINERAL PRODUCTS</u>		19	1.7				
i.	Cement	23941	5	1.6	M.Tons	571,176	803,336	71.1
ii.	Marble	23961	14	0.1	M.Tons	411	400	102.8
14.	<u>BASIC IRON & STEEL METALS</u>		13	3.1				
i.	Steel Products	24104	3	0.3	M.Tons	14,877	10,029	148.3
ii.	M S Products	24106	10	2.8	M.Tons	13,916	13,723	101.4
15.	<u>FABRICATED METALS PRODUCTS</u>		1	0.4				
i.	Safety Razor Blades	25931	1	0.4	"000" Nos.	22,105	50,731	43.6
16.	<u>ELECTRICAL EQUIPMENT</u>		8	0.4				
i.	Insulated Wire & Cables	27320	8	0.4	M.Tons	3,279	4,213	77.8
17.	<u>MOTOR VEHICLES & PARTS</u>		60	5.8				
i.	Trucks	29101	13	0.4	Nos.	327	283	115.5
ii.	Buses	29101	13	0.4	Nos.	44	48	91.7
iii.	LCV'S	29101	13	0.4	Nos.	825	586	140.8
iv.	Tractors	29101	13	0.4	Nos.	4,194	3,242	129.4
v.	Cars	29101	13	0.4	Nos.	8,002	4,708	170.0
vi.	Vans & Jeep	29101	13	0.4	Nos.	778	1,841	42.3
vii.	Three Wheelers	29101	13	0.4	Nos.	2,384	1,082	220.3
viii.	Auto parts	29301	28	2.2	"000" Nos.	10,465	3,915	267.3
ix.	Motor Cycles	30911	19	0.5	Nos.	92,504	100,605	91.9
18.	<u>FURNITURE</u>		6	0.1				
i.	Sofa, Iron Chairs	31001	6	0.1	Nos.	384	366	104.9
			641	84.0				

Table 6: Production of Selected Items Pertaining to Large-Scale Manufacturing Sector, (Jul-Feb) 2023-24 Vs (Jul-Feb) 2022-23

Sr. No.	Industrial Sector/ Items	PISIC	Sampled Industrial Units (CMI 2015-16)	WEIGHT (2015-16)	Unit of Quantity	Production		Index of Production in 2023-24 (Jul-Feb) with 2022-23 (Jul-Feb)
						2023-24 (Jul-Feb)	2022-23 (Jul-Feb)	
1.	<u>FOOD PRODUCTS</u>		209	12.3				
i.	Vegetable Ghee	10401	25	2.1	M.Tons	285,413	301,330	94.7
ii.	Cooking Oil	10401	25	2.1	M.Tons	274,869	207,371	132.5
iii.	Liquid Milk	10501	3	1.1	"000" Liters.	47,193	58,360	80.9
iv.	Wheat & Grain Milling	10611	36	0.6	M.Tons	235,953	183,795	128.4
v.	Rice Milling	10612	65	1.9	M.Tons	60,025	63,754	94.2
vi.	Biscuits & Rusk	10713	12	1.3	M.Tons	113,224	121,404	93.3
vii.	Sugar	10721	27	1.3	M.Tons	919,982	1,173,089	78.4
viii.	Chocolate & sugar confectionery	10732	6	0.6	M.Tons	2,827	2,918	96.9
ix.	Tea	10792	4	1.1	M.Tons	35,041	28,786	121.7
x.	Animal/ Poultry Feeds	10802	6	0.3	M.Tons	6,925	1,186	583.9
2.	<u>BEVERAGES</u>		7	0.5				
i.	Mineral/ Bottled Waters	11042	4	0.1	"000" NOs.	466,781	280,105	166.6
ii.	Soft Drinks	11043	3	0.4	"000" NOs.	381,524	471,905	80.8
3.	<u>TEXTILES</u>		128	17.6				
i.	Knitting Wool (Cotton Yarn)	13112	52	7.4	M.Tons	302,412	323,946	93.4
ii.	Woolen Worsted Cloth (Cotton Fabric)	13121	45	8.0	"000" Sq. M	616,508	509,337	121.0
iii.	Terry Towel and Bath Robes (MM Yarn)	13129	21	1.2	M.Tons	85,149	109,032	78.1
iv.	Woolen Blankets	13921	10	1.0	"000" NOs.	6,367	15,825	40.2
4.	<u>WEARING APPAREL</u>		56	10.0				
i.	Garments	14102	51	9.3	Dozen	3,687,650	5,785,614	63.7
ii.	Hosiery, socks, tights etc.	14302	5	0.7	Dozen	400,753	592,025	67.7
5.	<u>LEATHER & RELATED PRODUCTS</u>		15	0.4				
i.	Finished Leather/ Upper Leather	15111	15	0.4	"000" Sq. M.	3,875	3,080	125.8
6	<u>WOOD & WOOD WORKS</u>		2	0.1				
i.	Plywood	16212	2	0.1	"000"Sq.ft	43	87	49.4
7.	<u>PAPER & PAPER PRODUCTS</u>		13	2.2				
i.	Paper/ Paper Board (Writing Paper)	17013	3	0.8	M.Tons	3,536	3,257	108.6
ii.	Corrugated paper/ paperboard containers (Packaging)	17021	10	1.4	M.Tons	31,509	37,662	83.7
8.	<u>PRINTING & RECORDED MEDIA</u>		17	0.9				
i.	Printing of Newspapers/ magazines	18111	5	0.5	M.Tons	3,789	5,193	73.0
ii.	Printing of books, brochures, maps etc. (Advertising Material)	18112	10	0.1	M.Tons	3,697	3,845	96.2
iii.	Printing of postage stamps, cheques etc. (Printing Papers)	18113	2	0.3	M.Tons	2,923	4,545	64.3
9.	<u>COKE & REFINED PETROLEUM PRODUCTS</u>		9	12.4				
i.	Motor Sprit	19201	3	5.6	"000" Liters.	216,003	167,081	129.3
ii.	Kerosene oil	19201	3	5.6	"000" Liters.	3,979	4,419	90.0
iii.	L.P.G	19203	9	0.1	"000" Liters.	11,921	12,629	94.4
iv.	Naphtha Solvent	19203	9	0.1	"000" Liters.	51,039	54,573	93.5
v.	H.S.D	19203	9	0.1	"000" Liters.	995,417	821,205	121.2
vi.	Furnace Oil	19203	9	0.1	"000" Liters.	466,879	435,950	107.1
vii.	ASPHALT 80-100	19203	9	0.1	"000" Liters.	26,123	22,268	117.3
viii.	ASPHALT 60-70	19203	9	0.1	"000" Liters.	35,880	74,392	48.2

Sr. No.	Industrial Sector/ Items	PISIC	Sampled Industrial Units (CMI 2015-16)	WEIGHT (2015-16)	Unit of Quantity	Production		Index of Production in 2023-24 (Jul-Feb) with 2022-23 (Jul-Feb)
						2023-24 (Jul-Feb)	2022-23 (Jul-Feb)	
ix.	Jet Fuel	19203	9	0.1	"000" Liters.	73,887	114,387	64.6
x.	Lubricating Oil	19203	9	0.1	"000" Liters.	77,061	99,190	77.7
xi.	Others Petroleum Products	19203	9	0.1	"000" Liters.	192,404	183,401	104.9
10.	<u>CHEMICALS & CHEMICALS PRODUCTS</u>		14	5.8				
i.	Sulphuric/ Hydrochloric Acid/ Alum Sulphate	20115	5	0.4	M.Tons	42,056	31,599	133.1
ii.	Urea	20121	3	1.1	M.Tons	1,835,313	2,009,569	91.3
iii.	Ammonia	20121	3	1.1	M.Tons	452,961	484,119	93.6
iv.	DAP	20121	3	1.1	M.Tons	169,874	287,408	59.1
v.	Washing Soap	20232	6	0.8	M.Tons	45,419	204,464	22.2
vi.	Toilet Soap	20232	6	0.8	M.Tons	33,171	34,367	96.5
vii.	Detergent Powder	20234	4	0.5	M.Tons	187,224	254,305	73.6
11.	<u>PHARMACEUTICAL PRODUCTS</u>		41	8.5				
i.	Tablets	21001	41	1.7	"000" NOs.	18,744,559	18,481,060	101.4
ii.	Liquid / Syrups	21001	41	1.7	"000" Liters.	327,031	296,328	110.4
iii.	Injections	21001	41	1.7	"000" NOs.	569,249	510,577	111.5
iv.	Capsules	21001	41	1.7	"000" NOs.	1,559,100	1,537,052	101.4
v.	Ointments	21001	41	1.7	KGs.	1,563,803	2,259,562	69.2
12.	<u>RUBBER & PLASTIC PRODUCTS</u>		23	1.8				
i.	Motor Tires	22111	2	0.3	Nos.	1,380,987	1,426,088	96.8
ii.	Plastic Products	22201	21	1.5	M.Tons	46,982	58,966	79.7
13.	<u>OTHER NON-METALIC MINERAL PRODUCTS</u>		19	1.7				
i.	Cement	23941	5	1.6	M.Tons	5,603,943	4,938,704	113.5
ii.	Marble	23961	14	0.1	M.Tons	3,538	3,687	96.0
14.	<u>BASIC IRON & STEEL METALS</u>		13	3.1				
i.	Steel Products	24104	3	0.3	M.Tons	129,713	80,108	161.9
ii.	M S Products	24106	10	2.8	M.Tons	111,458	149,301	74.7
15.	<u>FABRICATED METALS PRODUCTS</u>		1	0.4				
i.	Safety Razor Blades	25931	1	0.4	"000" Nos.	349,013	345,203	101.1
16.	<u>ELECTRICAL EQUIPMENT</u>		8	0.4				
i.	Insulated Wire & Cables	27320	8	0.4	M.Tons	32,703	34,546	94.7
17.	<u>MOTOR VEHICLES & PARTS</u>		60	5.8				
i.	Trucks	29101	13	0.4	Nos.	1,365	2,409	56.7
ii.	Buses	29101	13	0.4	Nos.	491	564	87.1
iii.	LCV'S	29101	13	0.4	Nos.	2,684	4,504	59.6
iv.	Tractors	29101	13	0.4	Nos.	32,254	18,928	170.4
v.	Cars	29101	13	0.4	Nos.	49,997	81,809	61.1
vi.	Vans & Jeep	29101	13	0.4	Nos.	9,214	17,650	52.2
vii.	Three Wheelers	29101	13	0.4	Nos.	13,928	12,035	115.7
viii.	Auto parts	29301	28	2.2	"000" Nos.	76,572	42,949	178.3
ix.	Motor Cycles	30911	19	0.5	Nos.	728,053	966,992	75.3
18.	<u>FURNITURE</u>		6	0.1				
i.	Sofa, Iron Chairs	31001	6	0.1	Nos.	2,966	2,837	104.5
			641	84.0				

Table 7: Employment in Selected Large-Scale Manufacturing Sector, Feb-2024 Vs Jan-2024

Sr. No.	Industrial Sector/ Items	Sampled Industrial Units (CMI 2015-16)	Total Employees		Production Worker	
			Feb:2024	Jan:2024	Feb:2024	Jan:2024
1	FOOD PRODUCTS	209	24,706	24,575	16,812	16,707
2	BEVERAGES	7	5,036	5,136	1,154	1,169
3	TEXTILES	128	89,264	89,208	67,171	67,108
4	WEARING APPAREL	56	27,028	27,389	23,113	23,515
5	LEATHER & RELATED PRODUCTS	15	4,031	4,058	3,505	3,532
6	WOOD & WOOD WORKS	2	383	383	320	320
7	PAPER & PAPER PRODUCTS	13	2,119	2,122	1,463	1,466
8	PRINTING & RECORDED MEDIA	17	3,848	3,876	3,026	3,026
9	COKE & REFINED PETROLEUM PRODUCTS	9	1,224	1,227	912	909
10	CHEMICALS & CHEMICALS PRODUCTS	14	6,873	7,243	5,220	5,595
11	PHARMACEUTICAL PRODUCTS	41	14,631	14,618	9,983	10,003
12	RUBBER & PLASTIC PRODUCTS	23	5,631	5,977	4,398	4,309
13	OTHER NON-METALIC MINERAL PRODUCTS	19	2,941	2,976	1,943	1,955
14	BASIC IRON & STEEL METALS	13	1,096	1,097	848	849
15	FABRICATED METALS PRODUCTS	1	506	508	474	476
16	ELECTRICAL EQUIPMENT	8	6,901	7,071	5,423	5,438
17	MOTOR VEHICLES & PARTS	60	9,474	9,481	6,941	6,946
18	FURNITURE	6	57	57	34	34
	Grand Total	641	205,747	207,003	152,737	153,356

Table 8: Employment in Selected Large-Scale Manufacturing Sector, Feb-2024 Vs Feb-2023

Sr. No.	Industrial Sector/ Items	Sampled Industrial Units (CMI 2015-16)	Total Employees		Production Worker	
			Feb:2024	Feb:2023	Feb:2024	Feb:2023
1	FOOD PRODUCTS	209	24,706	26,950	16,812	17,884
2	BEVERAGES	7	5,036	2,674	1,154	837
3	TEXTILES	128	89,264	94,317	67,171	71,749
4	WEARING APPAREL	56	27,028	26,734	23,113	23,234
5	LEATHER & RELATED PRODUCTS	15	4,031	4,303	3,505	3,727
6	WOOD & WOOD WORKS	2	383	300	320	258
7	PAPER & PAPER PRODUCTS	13	2,119	2,084	1,463	1,473
8	PRINTING & RECORDED MEDIA	17	3,848	4,176	3,026	2,913
9	COKE & REFINED PETROLEUM PRODUCTS	9	1,224	1,269	912	957
10	CHEMICALS & CHEMICALS PRODUCTS	14	6,873	8,614	5,220	5,999
11	PHARMACEUTICAL PRODUCTS	41	14,631	15,104	9,983	10,432
12	RUBBER & PLASTIC PRODUCTS	23	5,631	4,237	4,398	3,322
13	OTHER NON-METALIC MINERAL PRODUCTS	19	2,941	2,971	1,943	1,946
14	BASIC IRON & STEEL METALS	13	1,096	1,050	848	800
15	FABRICATED METALS PRODUCTS	1	506	556	474	516
16	ELECTRICAL EQUIPMENT	8	6,901	7,015	5,423	5,383
17	MOTOR VEHICLES & PARTS	60	9,474	10,522	6,941	7,481
18	FURNITURE	6	57	57	34	34
	Grand Total	641	205,747	212,934	152,737	158,945

Table 9: Gender wise Percentage of Employment in Selected Large-Scale Manufacturing Sector, Feb-2024

Sr. No.	Industrial Sector/ Items	Sampled Industrial Units (CMI 2015-16)	Total Employees		Production Worker	
			Male %	Female %	Male %	Female %
1	FOOD PRODUCTS	209	99.4%	0.6%	99.8%	0.2%
2	BEVERAGES	7	98.3%	1.7%	95.6%	4.4%
3	TEXTILES	128	97.1%	2.9%	97.7%	2.3%
4	WEARING APPAREL	56	82.3%	17.7%	81.6%	18.4%
5	LEATHER & RELATED PRODUCTS	15	98.5%	1.5%	99.3%	0.7%
6	WOOD & WOOD WORKS	2	97.6%	2.4%	100.0%	0.0%
7	PAPER & PAPER PRODUCTS	13	94.6%	5.4%	99.6%	0.4%
8	PRINTING & RECORDED MEDIA	17	99.1%	0.9%	100.0%	0.0%
9	COKE & REFINED PETROLEUM PRODUCTS	9	96.1%	3.9%	96.1%	3.9%
10	CHEMICALS & CHEMICALS PRODUCTS	14	97.9%	2.1%	98.4%	1.6%
11	PHARMACEUTICAL PRODUCTS	41	86.3%	13.7%	82.7%	17.3%
12	RUBBER & PLASTIC PRODUCTS	23	96.4%	3.6%	98.6%	1.4%
13	OTHER NON-METALIC MINERAL PRODUCTS	19	99.2%	0.8%	99.9%	0.1%
14	BASIC IRON & STEEL METALS	13	100.0%	0.0%	100.0%	0.0%
15	FABRICATED METALS PRODUCTS	1	100.0%	0.0%	100.0%	0.0%
16	ELECTRICAL EQUIPMENT	8	98.6%	1.4%	98.5%	1.5%
17	MOTOR VEHICLES & PARTS	60	97.6%	2.4%	98.3%	1.7%
18	FURNITURE	6	100.0%	0.0%	100.0%	0.0%
	Grand Total	641	94.9%	5.1%	94.7%	5.3%

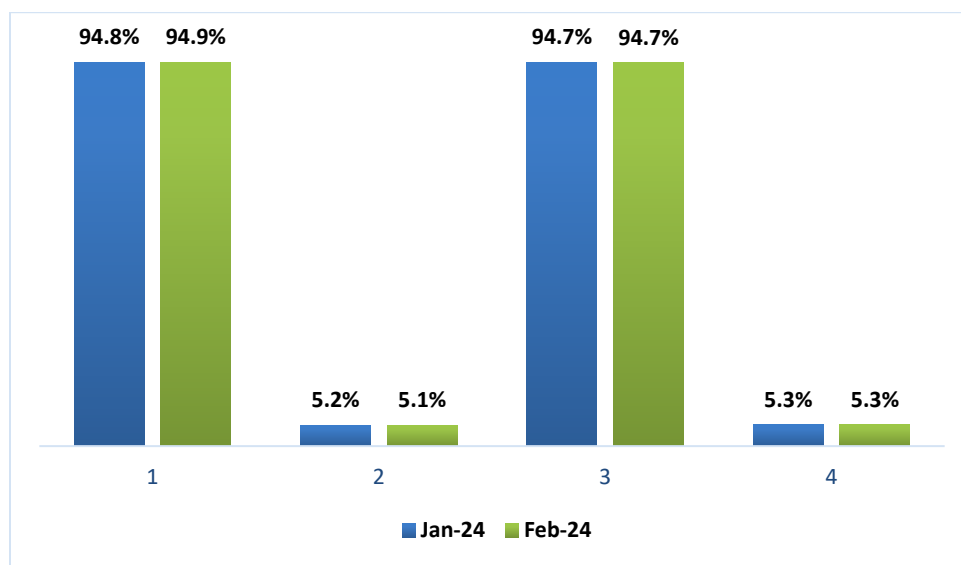


Figure 3: Chart of Gender wise Percentages of Employment in Large Scale Manufacturing Industries

Annexure – A Proforma/ Questionnaire



GOVERNMENT OF SINDH
PLANNING & DEVELOPMENT DEPARTMENT
BUREAU OF STATISTICS

http://sbos.sindh.gov.pk
Street-13, Block-8, Kehkashan Clifton, Karachi

The information supplied will be kept strictly confidential and will be used for statistical purpose only.	REPORT FOR	
	MONTH	YEAR

MONTHLY SURVEY OF INDUSTRIAL PRODUCTION AND EMPLOYMENT IN SINDH.

INDUSTRY CODE

--	--	--	--	--

Estb: Code

--	--	--	--

PART-I GENERAL PARTICULARS

i) Name and Address of the Establishment _____

ii) Name, Designation, Telephone, Cell and _____

Fax# of the person to be contacted. _____

iii) Website and E-mail Address _____

PART-II PRODUCTION DATA

S.No	Major Items of Production	Code	Unit of Quantity	Code	Previous Month	Current Month	Reasons of Growth/ Decline

PART-III WORKING DAYS AND EMPLOYMENT

i) No. of days establishment worked _____

ii) No. of Production workers. Male _____ Female _____ Total _____

iii) No. of Non production workers Male _____ Female _____ Total _____

TOTAL (ii + iii) Male _____ Female _____ Total _____

Note: Production Workers mean those who are directly associated with production. It includes those engaged in manufacturing, assembling packing repairing etc. Working Supervisor should also be included, Non production worker mean those who are not directly associated with production it includes Administrative Clerical and Services Staff like Chowkidar, Driver and Sweeper.

Signature _____

Designation _____

Date _____

Annexure – B Important Definitions

- Large Scale Manufacturing Industries

Establishments where 10 or more employees are working are called large Scale Manufacturing Industries.

- Employees

Employees mean all persons whether part time or full time who work in the establishments and receive remuneration in cash or in kind. Working proprietors, unpaid family workers and home workers are excluded from the category of employee. There are two types of employees Production Workers and Non-Production Workers.

- Production Workers

Are engaged in work directly associated with production like manufacturing, assembling, packing, repairing etc. Working supervisors and persons engaged for repairs and maintenance are also included.

- Non-Production Workers

Include administrative and professional employees, white-collar office employees, drivers, watchmen/ guards, peons, sweepers, office boys, etc.

Annexure – C Data Users

- Ministry of Industries & Production, Government of Pakistan.
- Planning & Development Department, Government of Sindh.
- Pakistan Bureau of Statistics, Government of Pakistan.
- State Bank of Pakistan.
- Research & Training Wing, Planning & Development Department, Government of Sindh.

Annexure – D Census value added and Contribution to GDP

Codes	Industry Major Group	No. of Firms	Census Value Added at Market Price	Contribution to GDP at Market Price	Contribution to GDP at Producer Price	Contribution to GDP at Basic Price	Contribution to GDP at Factor Cost
C	ALL INDUSTRIES	6299	1929472066	1637834836	1268637678	1255894601	1182636295
10	FOOD PRODUCTS	1682	295368858	235434110	203106723	197273490	195510704
10102	Fresh, chilled or frozen meat	5	4691422	2722767	2682150	2702246	2702223
10202	Fish, crustacean & mollusc products	14	572126	482976	482976	482644	482349
10302	Preserving of fruit, nuts or vegetables	24	1497731	951323	951323	951323	951323
10305	Jams, jellies & marmalades	2	4132058	3095923	1677737	1677335	1677335
10401	Crude / refined vegetable oils	164	70799514	58992520	55833158	51485578	50577888
10405	Cotton linters.	131	7747677	7144462	7126701	6585313	6360547
10406	Oilcakes & others	18	440116	380259	304810	304810	302778
10501	fresh liquid milk & milk-based drinks	8	20698635	15127003	14051823	14061378	14061378
10506	Ice cream & other edible ice.						
10509	Others n.e.c.	10	156475	126956	121730	121730	121537
10611	Grain milling.	221	8082300	7195760	7000605	6997277	6961744
10612	Rice milling.	603	25774678	24087309	23944477	24059175	23881095
10613	Vegetable milling						
10621	Starches from rice, potatoes, maize etc.	102	14368886	12820492	9319791	9279365	9255406
10711	Bread & rolls	36	2522314	2071664	2008855	1948380	1944139
10712	Pastry, cakes, pies etc	5	144870	96387	96387	96387	96322
10713	Rusks, biscuits & bakery products	47	30635020	23024946	16769757	16687098	16683728
10719	Others n.e.c.	24	1927248	931039	915004	915004	902820
10721	Sugar & sugar substitutes	36	27320072	24031576	17337711	16675155	16664606
10732	Chocolate & sugar confectionery	32	12190966	7521403	7515126	7515126	7515047
10792	Blending of tea & mate	7	34140036	22815606	13551283	13551283	13551283
10794	Infant formula or baby foods etc						
10795	Prepared foods/sandwiches, fresh pizza etc.	3	2192123	2115736	2115335	2115335	
10796	Spices, sauces & condiments	34	13626483	9318342	9318342	9318342	9318121
10798	Processing of salt	15	136945	123542	123542	123542	123469
10799	Others n.e.c.	94	6612861	5947268	5571412	5648432	5485615
10802	Prepared feeds for farm animals	47	4958300	4308853	4286690	3971233	3774615
11	BEVERAGES	38	22325221	19873504	13112942	10232864	10230926
11041	Non-alcoholic beverages	9	5045958	4661248	3388382	3334412	3332670
11042	Natural mineral waters/ bottled waters	17	1979406	1596578	1596578	1596578	1596578
11043	Soft drinks like lemonade, cola etc.	12	15299858	13615678	8127982	5301874	5301678
12	TOBACCO PRODUCTS	10	112570	107551	107551	107551	107551
12001	Tobacco products & substitutes etc.	10	112570	107551	107551	107551	107551
13	TEXTILES	1479	313495611	257294210	243014510	243213252	241916885
13112	Spinning of yarn or thread	219	124719279	104200299	92716189	92901931	91784959
13121	Broad woven fabrics	590	123627421	101855663	99846588	99872516	99763867

Codes	Industry Major Group	No. of Firms	Census Value Added at Market Price	Contribution to GDP at Market Price	Contribution to GDP at Producer Price	Contribution to GDP at Basic Price	Contribution to GDP at Factor Cost
13129	Others n.e.c.	227	17731571	14620052	14471382	14471382	14460481
13131	Bleaching & dyeing of fabrics	223	19355753	15557699	15410689	15406905	15371102
13921	Madeup articles of any textile material	66	16611830	12750176	12690056	12697607	12690353
13922	Made-up furnishing articles	9	3436413	2084252	2084252	2084252	2083372
13930	Floor coverings like carpets, rugs etc.				497798		483307
13941	Twine, cordage, rope etc.	6	844092	685306	5297555	487158	5279444
13991	Labels/ badges etc.	12	3909019	2623422		2398751	
13992	Tulles/ laces & other net fabrics	125	3238775	2897385	2881799	2883311	2871266
13999	Others n.e.c.	2	21460	19957	17005	9438	9426
14	WEARING APPAREL	652	169706963	134640465	130863184	130834476	130221376
14101	Wearing apparel of leather	27	1492784	888567	887486	887486	868192
14102	Outerwear/ work wear	524	153025309	120139592	116476136	116458526	115897861
14103	Underwear/ nightwear	4	1884756	1851744	1797756	1786658	1753650
14105	Other clothing accessories	5	4270505	3276305	3276305	3276305	3276173
14302	Hosiery, socks, tights & pantyhose etc	92	9033608	8484257	8425501	8425501	8425501
15	LEATHER PRODUCTS	111	7019933	4955482	4953790	4941630	4932933
15111	Tanning/ dressing of hides & skins	87	6478115	4508141	4506449	4494289	4485592
15121	Luggage, h&bags etc.						
15122	Articles of leather etc.	16	499068	404591		404591	
15201	Footwear	8	42750	42750	42750	42750	42750
16	WOOD AND WOOD PRODUCTS	29	3329177	3154918	3005512	2752293	2746302
16101	Sawmilling & planing of wood						
16102	Wooden railway sleepers	5	1344718	1327778	1297778	1290778	1290278
16212	Playwood/ veneer panel/laminated sheets	5	633885	535131	535131	535131	534014
16213	Particle board/densified wood etc.	14	1320831	1266455	1147477	901259	897332
16221	Wooden goods of construction industry	2	9797	429	9369	9369	9000
16231	Packing boxes, crates, drums of wood						
16291	Wooden products	3	19946	15757		15757	
17	PAPER AND PAPER PRODUCTS	202	38156856	34732893	33342147	33150341	33147339
17013	Paper & paperboard	50	11831699	11441753	10600137	10599816	10599575
17019	Others n.e.c.	2	77682	57619	57619	57619	57384
17021	Corrugated paper/ paperboard containers	131	20563452	18371694	18060989	18059374	18057009
17022	Sacks, bags & similar articles of paper	2	571529	558588	558588	558588	558588
17091	Personal hygiene paper product	14	3435547	2999684	2772851	2640062	2639934
17099	Others n.e.c.	3	1676948	1303555	1291962	1234883	1234848
18	PRINTING/REPRODUCTION OF RECORDED MEDIA	121	18845335	16376532	13616723	13420174	13397044
18111	Printing of newspapers/ magazines	76	7987871	6207287	6207287	6207287	6207287
18112	Printing of books, brochures, maps etc	19	891538	769855	689057	689057	687472
18113	Printing of postage stamps, chequesetc	2	5933099	5807125	4200445	4200445	4197576

Codes	Industry Major Group	No. of Firms	Census Value Added at Market Price	Contribution to GDP at Market Price	Contribution to GDP at Producer Price	Contribution to GDP at Basic Price	Contribution to GDP at Factor Cost
18114	Printing of diaries & calendars etc	4	220954	198237	198237	198237	195726
18115	Printing on textile, glass, metal, wood						
18123	Plate/image-making setting services	20	3811872	3394028		2125148	
19	COKE AND REFINED PETROLEUM PRODUCTS	30	330972023	336316961	157836806	155317906	86772288
19201	Production of motor fuel/ kerosene etc.	4	312150503	318793368	141319068	138803695	70338496
19203	Oil-based lubricating oils or greases	26	18821520	17523593	16517739	16514210	16433792
20	CHEMICALS AND CHEMICAL PRODUCTS	265	180017467	133587473	108318466	122495044	122396819
20111	Inorganic industrial/ medical gases	62	14866312	11164345	11103419	11103419	11096743
20112	Dyes & pigments in basic form	10	6965417	5530983	5034056	5021496	5019965
20113	Manufacture of inorganic acids & bases	3	1089090	884711	563548	563548	563548
20115	Basic organic chemicals	9	5155954	4829843	4829843	4829843	4829843
20119	Others n.e.c.	9	9238594	6860806	4224884	4200636	4200581
20121	Fertilizers	7	48767039	37318056	27473486	41942632	41942632
20131	Plastics in primary forms	10	13288212	10957012	6108881	5929461	5922377
20211	Insecticides/ fungicides/ herbicides	11	5647603	4828955	4717989	4717989	4702696
20219	Other agrochemical products n.e.c.	2	44351	37205	37205	37205	37035
20221	Paints & varnishes etc						
20227	Printing ink	32	13496566	13034327		12876110	
20232	Soap	38	33553981	21052698	19866228	19864240	19862344
20234	Detergent, dish-washing preparation etc	2	19283996	11770543	6491360	6491360	6491330
20236	Perfumes & toilet preparations	30	6170308	3552619	3447095	3440426	3395055
20292	Gelatine/ glues & prepared adhesives	21	470580	306592	241270	238852	238591
20294	Photographic plates, films etc	3	505003	394185	297507	280490	277023
20299	Others n.e.c.						
20303	Synthetic or artificial filament yarn	16	1474461	1064592		957337	
21	BASIC PHARMACEUTICAL PRODUCTS	211	156476332	110258572	108968543	108983038	108369168
21001	Medicinal active substances	195	153612183	108001189	107026665	107049946	106439059
21003	Medicaments/ homeopathic preparations	12	1123270	1024144	1013895	1013895	1013283
21009	Other such activities n.e.c.	4	1740879	1233238	927983	919196	916826
22	RUBBER AND PLASTICS PRODUCTS	215	32276858	29606359	26288588	26172973	26161364
22111	Rubber tyres	5	4513573	3911265	3911265	3911265	3911265
22191	Other products of rubber	17	3086850	2863359	2585325	2585325	2583326
22201	Plastic products for packing of goods	172	23718343	21982104	18950371	18834755	18825900
22203	Plastic tableware, kitchenware etc	12	695602	642874	638206	638206	637793
22209	Other diverse plastic products	9	262491	206757	203421	203421	203080
23	OTHER NON-METALLIC MINERAL PRODUCTS	548	54492837	49618700	37396922	36149990	36103688
23101	Flat glass/ glass paving blocks	24	4822650	3983568	3983568	3983568	3978788
23102	Glass mirror/ bottle/ drinking glass	4	19133	18928	18928	18928	18928

Codes	Industry Major Group	No. of Firms	Census Value Added at Market Price	Contribution to GDP at Market Price	Contribution to GDP at Producer Price	Contribution to GDP at Basic Price	Contribution to GDP at Factor Cost
23103	Pharmaceutical glassware etc.	5	438900	365862	289479	266453	265504
23921	Ceramic tiles, mosaic cubes etc.	2	2868320	2346650	1408157	1408157	1408157
23922	Non-refractory clay building materials						
23923	Ceramic sanitary fixtures	351	6528014	6356491	5240193	5289589	5262619
23931	Ceramic tableware & domestic articles	9	223482	192541	190598	190598	190598
23941	Clinkers & hydraulic cement	5	34050113	31215404	21206054	19875074	19875074
23951	Precast concrete, cement or stone	48	3791961	3512195	3447479	3503864	3491049
23961	Cutting, shaping & finishing of stone	100	1750264	1627063	1612466	1613759	1612971
24	BASIC METALS	126	75764546	69810955	53381662	51791999	51715787
24103	Pure iron, granular iron & iron powder						
24104	Remelting of scrap ingot of iron/ steel	2	4290468	3701246	3524460	3524460	3522789
24106	Hot/cold-rolled products of steel	81	48029391	45718917	36411991	35529729	35525285
24108	Welded tubes & pipes of steel	22	20955136	18192668	11908986	11202944	11136814
24109	Others n.e.c.	4	349660	346050	343960	343960	343960
24202	Aluminium & alloys						
24206	Chrome, manganese, nickel & alloys etc	13	1158257	1106584	734692	733333	729467
24311	Casting of iron						
24312	Casting of steel	4	981634	745490	457573	457573	457472
25	FABRICATED METAL PRODUCTS	53	7699426	6140873	5520704	5518967	5506720
25111	Metal framework/ skeleton etc						
25112	Metal door, window, shutter, gates etc	8	185254	180117	179292	179292	172037
25119	Others n.e.c.	3	137574	132900	132055	132055	131991
25122	Metal containers for gas	2	69020	59806	59806	59806	59806
25132	Parts for marine or power boilers/ nuclear reactors etc	2	247588	197630	146662	144925	143509
25932	Knives, h& tools, saw blades etc						
25934	Other tools of such nature n.e.c.	7	5037857	3730467	3205565	3205565	3205449
25991	Cans, drums, buckets, boxes, tins etc	8	460795	432866	406203	406203	404344
25997	Various metal articles	5	1101732	1030212	1014246	1014246	1014226
25999	Others n.e.c.	18	459606	376875	376875	376875	375357
26	COMPUTER, ELECTRONIC AND OPTICAL PRODUCTS	6	366815	278620	278544	278544	278544
26409	Others n.e.c.	2	4809	3732	3732	3732	3732
26516	Scales, balances & laboratory apparatus	2	226030	168805	168729	168729	168729
26602	Electro medical/ electrotherapeutic equipment						
26801	Audio & video tapes/ cassettes	2	135976	106083	106083	106083	106083
27	ELECTRICAL EQUIPMENT	87	61567697	49378704	28883717	28604815	28555499
27101	Electric transformers	3					
27102	Electric motors/ power generators etc	3	761401	761335	761335	761335	761335
27103	Electric power distribution panel etc.						
27104	Switchboard apparatus, fuses, switches	6	6274070	3906741	2169952	2178182	2178048

Codes	Industry Major Group	No. of Firms	Census Value Added at Market Price	Contribution to GDP at Market Price	Contribution to GDP at Producer Price	Contribution to GDP at Basic Price	Contribution to GDP at Factor Cost
27109	Others n.e.c.	11	234313	225703	223614	223614	223590
27203	Lead acid/ lithium/ dry/ wet batteries	8	33295202	27370821	13305137	13290217	13289923
27320	Insulated wire & cable	24	11509047	9058281	4722689	4670315	4670211
27401	Lamps, bulbs, ch&eliers,lanterns etc.	3	515976	439979	218190	135293	
27501	Domestic electric appliances						
27503	Domestic non-electric cooking equipment	23	8825577	7514697		7261919	
27909	Others n.e.c.	6	152110	101147	85477	83939	74612
28	MACHINERY AND EQUIPMENT N.E.C.	97	8741949	7953079	7648415	7646414	7642752
28132	Pumps for liquids	12	4818692	4702476	4694384	4694384	4694384
28133	Pumps for engines/ motor vehicle pumps						
28134	Industrial taps/ valves & h& pump etc	2	290734	241313		241313	
28191	Industrial freezing equipment etc	2	35294	33131	25827	25827	25535
28193	Filtering or purifying machinery						
28198	Parts for general-purpose machinery	59	1060242	797959		791134	
28199	Others n.e.c.	3	57909	51040	50820	50820	50637
28211	Tractors	2	518707	363929	363929	363929	363929
28214	Soil preparation, planting machinery	2	239900	239842	239842	239842	239842
28219	Diverse agricultural machinery	3	59372	58797	58797	58797	58797
28222	Tools for grinding, drilling, boring	3	180601	168251	167451	167451	167351
28259	Food processing machinery						
28261	Textile machinery	9	1480498	1296340	1014919	1012918	1012233
29	MOTOR VEHICLES, TRAILERS AND SEMI	227	132405145	121484559	77294612	65727682	65654221
29101	Passenger cars, commercial busses etc	12	95827262	88108702	49222447	38468944	38440702
29202	Trailers & semi-trailers	7	83107	78976	77656	77656	76246
29301	Parts & accessories for motor vehicles	208	36494776	33296881	27994509	27181083	27137273
30	OTHER TRANSPORT EQUIPMENT	21	15561519	12169351	7124438	6754555	6754021
30911	Motorcycles, engines for motorcycles	13	15423277	12044182	7003491	6637913	6637577
30912	Parts & accessories for motorcycles	8	138242	125169	120947	116642	116444
31	FURNITURE	31	1394624	1335715	1264409	1217831	1209238
31001	Furniture & fixtures	27	1361286	1303777	1232771	1186193	1177980
31004	Furniture for kitchen bedrooms etc.	4	33338	31938	31638	31638	31258
32	OTHER MANUFACTURING	58	3374305	3325248	3308771	3308771	3305127
32113	Jewellery, goldsmiths' articles.						
32121	Costume or imitation jewellery.	35	461839	457879	441402	441402	440949
32509	Others n.e.c.	9	469024	448161	448161	448161	445469
32902	Brooms & brushes.	2	124623	119889	119889	119889	119889
32903	Pens, pencils & stamps etc.	5	2130480	2130480	2130480	2130480	2130480
32909	Others n.e.c.	7	188338	168839	168839	168839	168340

Annexure – E Item wise Production Weights for Sindh

Industrial Sector/ Items	PISC	Unit of Quantity	Sindh Weight based on CMI 2015-16
10-FOOD PRODUCTS			12.3
Vegetable Ghee	10401	M.Tons	2.1
Cooking Oil	10401	M.Tons	2.1
Liquid Milk	10501	"000" Liters.	1.1
Wheat & Grain Milling	10611	M.Tons	0.6
Rice Milling	10612	M.Tons	1.9
Biscuits& Rusk	10713	M.Tons	1.3
Sugar	10721	M.Tons	1.3
Chocolate & sugar confectionery	10732	M.Tons	0.6
Tea	10792	M.Tons	1.1
Animal/ Polutry Feeds	10802	M.Tons	0.3
11-BEVERAGES			0.5
Mineral/ Bottled Waters	11042	"000" NOs.	0.1
Soft Drinks	11043	"000" NOs.	0.4
13-TEXTILES			17.6
Kinting Wool (Cotton Yarn)	13112	M.Tons	7.4
Woolen Worsted Cloth (Cotton Fabric)	13121	"000" Sq. M	8.0
Terry Towel and Bath Robes (MM Yarn)	13129	M.Tons	1.2
Woollen Blankets	13921	000Nos.	1.0
14-WEARING APPAREL			10.0
Garments	14102	Dozen	9.3
Hosiery, socks, tights etc.	14302	Dozen	0.7
15-LEATHER & RELATED PRODUCTS			0.4
Finished Leather/ Upper Leather	15111	"000" Sq. M.	0.4
16-WOOD & WOOD WORKS			0.1
Plywood	16212	"000" Sq. ft.	0.1
17-PAPER & PAPER PRODUCTS			2.2
Paper/ Paper Board (Writing Paper)	17013	M.Tons	0.8
Corrugated paper/ paperboard conainers (Packaging)	17021	M.Tons	1.4
18-PRINTING & RECORDED MEDIA			0.9
Printing of Newspapers/ magazines	18111	M.Tons	0.5
Printing of books, brochures, maps etc. (Advertizing Material)	18112	M.Tons	0.1
Prining of postage stamps, cheques etc. (Printing Papers)	18113	M.Tons	0.3
19-COKE & REFINED PETROLEUM PRODUCTS			12.4
Motor Sprit	19201	"000" Liters.	5.6
Kerosene oil	19201	"000" Liters.	5.6
L.P.G	19203	"000" Liters.	0.1
NapthaSolvant	19203	"000" Liters.	0.1
H.S.D	19203	"000" Liters.	0.1
Furnace Oil	19203	"000" Liters.	0.1
ASPHALT 80-100	19203	"000" Liters.	0.1
ASPHALT 60-70	19203	"000" Liters.	0.1

Industrial Sector/ Items	PISC	Unit of Quantity	Sindh Weight based on CMI 2015-16
Jet Fuel	19203	"000" Liters.	0.1
Lubricating Oil	19203	"000" Liters.	0.1
Others Petroleum Products	19203	"000" Liters.	0.1
20-CHEMICALS & CHEMICALS PRODUCTS			5.8
Surphuric/ Hydrochloric Acid/ Alum Sulphate	20115	M.Tons	0.4
Urea	20121	M.Tons	1.1
Amonia	20121	M.Tons	1.1
DAP	20121	M.Tons	1.1
Washing Soap	20232	M.Tons	0.8
Toilet Soap	20232	M.Tons	0.8
Detergent Powder	20234	M.Tons	0.5
21-PHARMACEUTICAL PRODUCTS			8.5
Tablets	21001	"000" NOs.	1.7
Liquied/ Syrups	21001	"000" Liters.	1.7
Injections	21001	"000" NOs.	1.7
Capsules	21001	"000" NOs.	1.7
Ointments	21001	KGs.	1.7
22-RUBBER & PLASTIC PRODUCTS			1.8
Motor Tyres	22111	Nos.	0.3
Plastic Products	22201	M.Tons	1.5
23-OTHER NON-METALIC MINERAL PRODUCTS			1.7
Cement	23941	M.Tons	1.6
Marble	23961	M.Tons	0.1
24-BASIC IRON & STEEL METALS			3.1
Steel Products	24104	M.Tons	0.3
M S Products	24106	M.Tons	2.8
25-FABRICATED METALS PRODUCTS			0.4
Safety Razor Blades	25931	"000" Nos.	0.4
27-ELECTRICAL EQUIPMENT			0.4
Insulated Wire & Cables	27320	M.Tons	0.4
29-MOTOR VEHICLES & PARTS			5.8
Trucks	29101	Nos.	0.4
Buses	29101	Nos.	0.4
LCV'S	29101	Nos.	0.4
Tractors	29101	Nos.	0.4
Cars	29101	Nos.	0.4
Vans & Jeep	29101	Nos.	0.4
Three Wheelers	29101	Nos.	0.4
Autoparts	29301	000'Nos.	2.2
Motor Cycles	30911	Nos.	0.5
31-FURNITURE			0.1
Sofa, Iron Chairs	31001	Nos.	0.1
Total			84.0

Annexure – F Monthly Item wise Time Series of Production

Sectors/ Items	Unit	Monthly Production					
		Aug-23	Sep-23	Oct-23	Nov-23	Dec-23	Jan-24
FOOD PRODUCTS							
Vegetable Ghee	M.Tons	44,512	34,560	32,661	33,691	37,178	38,403
Cooking Oil	M.Tons	35,947	30,517	36,724	36,915	36,295	34,876
Liquid Milk	"000"Liters.	6,984	5,810	5,920	5,624	5,343	5,612
Wheat & Grain Milling	M.Tons	21,127	26,362	27,703	27,498	37,121	29,390
Rice Milling	M.Tons	1,017	1,508	2,650	12,609	14,589	12,601
Biscuits & Rusk	M.Tons	8,762	16,438	15,856	14,644	15,871	17,109
Sugar	M.Tons	-	-	300	107,049	237,575	310,950
Chocolate & sugar confectionery	M.Tons	351	367	419	317	282	330
Tea	M.Tons	3,467	4,210	4,105	4,917	4,549	4,317
Animal/ Poultry Feeds	M.Tons	135	128	1,036	1,191	1,370	1,586
BEVERAGES							
Mineral/ Bottled Waters	"000"NOs.	76,934	60,864	51,443	59,159	50,225	42,591
Soft Drinks	"000"NOs.	80,313	49,258	41,769	48,099	40,998	34,948
TEXTILES							
Knitting Wool (Cotton Yarn)	M.Tons	31,900	36,716	42,123	35,705	41,012	47,064
Woolen Worsted Cloth (Cotton Fabric)	"000" Sq.M	82,271	79,170	70,295	80,439	92,105	78,389
Terry Towel and Bath Robes (MM Yarn)	M.Tons	12,425	13,618	11,757	9,998	8,998	7,698
Woolen Blankets	000'Nos.	955	704	810	689	890	759
WEARING APPAREL							
Garments	Dozen	461,425	608,145	516,912	439,775	373,908	317,922
Hosiery, socks, tights etc.	Dozen	86,804	62,158	52,941	45,247	38,860	33,331
LEATHER & RELATED PRODUCTS							
Finished Leather/ Upper Leather	"000" Sq.M.	462	526	536	512	487	433
WOOD & WOOD WORKS							
Plywood	"000"Sq. ft.	3	4	3	8	7	6
PAPER & PAPER PRODUCTS							
Paper/ Paper Board (Writing Paper)	M.Tons	470	446	474	450	428	402

Sectors/ Items	Unit	Monthly Production					
		Aug-23	Sep-23	Oct-23	Nov-23	Dec-23	Jan-24
Corrugated paper/ paperboard containers (Packaging)	M.Tons	3,563	3,712	3,781	4,080	4,284	4,428
PRINTING & RECORDED MEDIA							
Printing of Newspapers/ magazines	M.Tons	560	524	488	464	441	422
Printing of books, brochures, maps etc. (Advertising Material)	M.Tons	481	489	492	460	437	444
Printing of postage stamps, cheques etc.(Printing Papers)	M.Tons	343	391	369	354	353	371
COKE & REFINED PETROLEUM PRODUCTS							
Motor Sprit	"000"Liters.	22,533	27,290	26,050	29,243	28,340	28,739
Kerosene oil	"000"Liters.	356	-	422	242	-	1,110
L.P.G	"000"Liters.	1,637	1,114	1,055	1,552	1,390	2,105
Naphtha Solvent	"000"Liters.	2,362	1,235	8,569	6,264	7,471	13,679
H.S.D	"000"Liters.	108,415	130,998	119,076	133,768	131,671	122,722
Furnace Oil	"000"Liters.	57,530	59,312	53,540	55,691	56,234	52,348
ASPHALT 80-100	"000"Liters.	-	3,474	2,451	3,055	2,492	6,597
ASPHALT 60-70	"000"Liters.	11,139	3,533	2,751	6,287	3,111	8,273
Jet Fuel	"000"Liters.	15,480	10,391	11,647	9,662	7,549	11,683
Lubricating Oil	"000"Liters.	12,298	10,391	11,647	9,662	7,549	11,683
Others Petroleum Products	"000"Liters.	30,510	27,306	15,580	37,710	25,170	19,523
CHEMICAL & CHEMICAL PRODUCTS							
Sulphuric/ Hydrochloric Acid/ Alum Sulphate	M.Tons	6,210	5,335	5,503	6,428	5,984	5,548
Urea	M.Tons	335,072	214,496	236,739	232,023	211,928	243,913
Ammonia	M.Tons	50,929	66,870	72,149	70,897	72,775	29,183
DAP	M.Tons	25,738	26,624	33,723	-	-	21,678
Washing Soap	M.Tons	7,659	6,015	5,464	5,889	5,447	5,138
Toilet Soap	M.Tons	3,820	4,918	4,840	4,370	3,724	3,880
Detergent Powder	M.Tons	30,620	23,758	25,254	23,460	21,701	23,429
PHARMACEUTICAL PRODUCTS							
Tablets	"000" NOs.	2,381,800	2,451,012	2,377,128	2,305,914	2,305,489	2,236,124
Liquid/ Syrups	"000" Liters.	43,300	41,930	40,872	39,846	39,646	38,657

Sectors/ Items	Unit	Monthly Production					
		Aug-23	Sep-23	Oct-23	Nov-23	Dec-23	Jan-24
Injections	"000" NOs.	65,258	71,852	74,012	71,692	71,784	69,530
Capsules	"000" NOs.	190,212	201,162	196,127	190,743	191,243	185,606
Ointments	KGs.	214,415	199,850	193,955	199,474	188,136	182,392
RUBBER & PLASTIC PRODUCTS							
Motor Tires	Nos.	108,186	179,698	190,498	178,647	154,990	185,740
Plastic Products	M.Tons	4,887	3,778	6,994	6,674	6,389	6,170
OTHER NON METALIC MINERAL PRODUCTS							
Cement	M.Tons	720,894	812,640	560,036	802,289	838,779	649,701
Marble	M.Tons	349	505	474	451	428	447
BASIC IRON & STEEL METALS							
Steel Products	M.Tons	12,954	10,880	17,228	19,812	18,821	17,334
M S Products	M.Tons	13,216	14,085	13,360	15,164	14,410	13,539
FABRICATED METAL PRODUCT							
Safety Razor Blades	"000" Nos.	46,784	58,719	50,697	45,674	43,390	28,903
ELECTRICAL EQUIPMENTS							
Insulated Wire & Cables	M.Tons	4,371	4,683	4,701	4,469	3,177	3,028
MOTOR VEHICLES & PARTS							
Trucks	Nos.	193	157	206	206	105	69
Buses	Nos.	166	43	44	44	29	41
LCV'S	Nos.	251	87	204	38	339	591
Tractors	Nos.	2,503	5,397	5,512	3,839	2,673	4,111
Cars	Nos.	4,329	6,264	3,868	4,271	6,654	9,614
Vans & Jeep	Nos.	1,544	1,442	672	1,062	670	1,475
Three Wheelers	Nos.	1,215	1,746	1,803	1,162	2,539	2,683
Auto parts	000'Nos.	9,486	8,107	8,512	9,789	10,295	10,910
Motor Cycles	Nos.	95,509	105,023	105,275	85,413	81,531	85,508
FURNITURE							
Sofa, Iron Chairs	Nos.	319	358	382	370	351	372

Annexure – G Monthly Item wise Time Series of Total Employment

Industrial Sector/ Items	Sampled Industrial Units (CMI 2015-16)	Total Employment					
		July-23	Aug-23	Sep-23	Oct-23	Nov-23	Dec-23
FOOD PRODUCTS	209	23,056	22,580	22,291	22,908	23,184	23,995
BEVERAGES	7	4,694	6,630	5,156	5,156	5,156	5,144
TEXTILES	128	94,101	91,531	91,683	91,813	91,415	89,033
WEARING APPAREL	56	26,768	27,389	27,389	27,389	27,389	27,389
LEATHER & RELATED PRODUCTS	15	4,311	4,122	4,150	4,127	4,100	4,118
WOOD & WOOD WORKS	2	300	380	380	380	383	383
PAPER & PAPER PRODUCTS	13	2,090	2,048	2,080	2,103	2,100	2,116
PRINTING & RECORDED MEDIA	17	3,972	4,001	4,001	3,944	3,944	3,972
COKE & REFINED PETROLEUM PRODUCTS	9	1,266	1,221	1,227	1,203	1,212	1,209
CHEMICALS & CHEMICALS PRODUCTS	14	6,880	6,888	6,861	6,899	6,939	6,933
PHARMACEUTICAL PRODUCTS	41	15,056	14,542	14,553	14,587	14,639	14,583
RUBBER & PLASTIC PRODUCTS	23	4,423	4,439	5,909	5,927	5,927	5,973
OTHER NON-METALIC MINERAL PRODUCTS	19	2,975	2,964	2,971	2,957	2,952	2,954
BASIC IRON & STEEL METALS	13	1,053	1,029	1,064	1,103	1,097	1,097
FABRICATED METALS PRODUCTS	1	536	516	516	510	510	510
ELECTRICAL EQUIPMENT	8	7,046	7,028	7,006	7,035	7,035	7,071
MOTOR VEHICLES & PARTS	60	10,230	9,373	9,284	9,284	9,497	9,435
FURNITURE	6	57	57	57	57	57	57



(Industries Section)
Bureau of Statistics
Planning & Development
Department
Government of Sindh
ddindustries.sindhbos@gmail.com

[MIPE February, 2024 – Industries Section, Bureau of Statistics, Sindh](#)