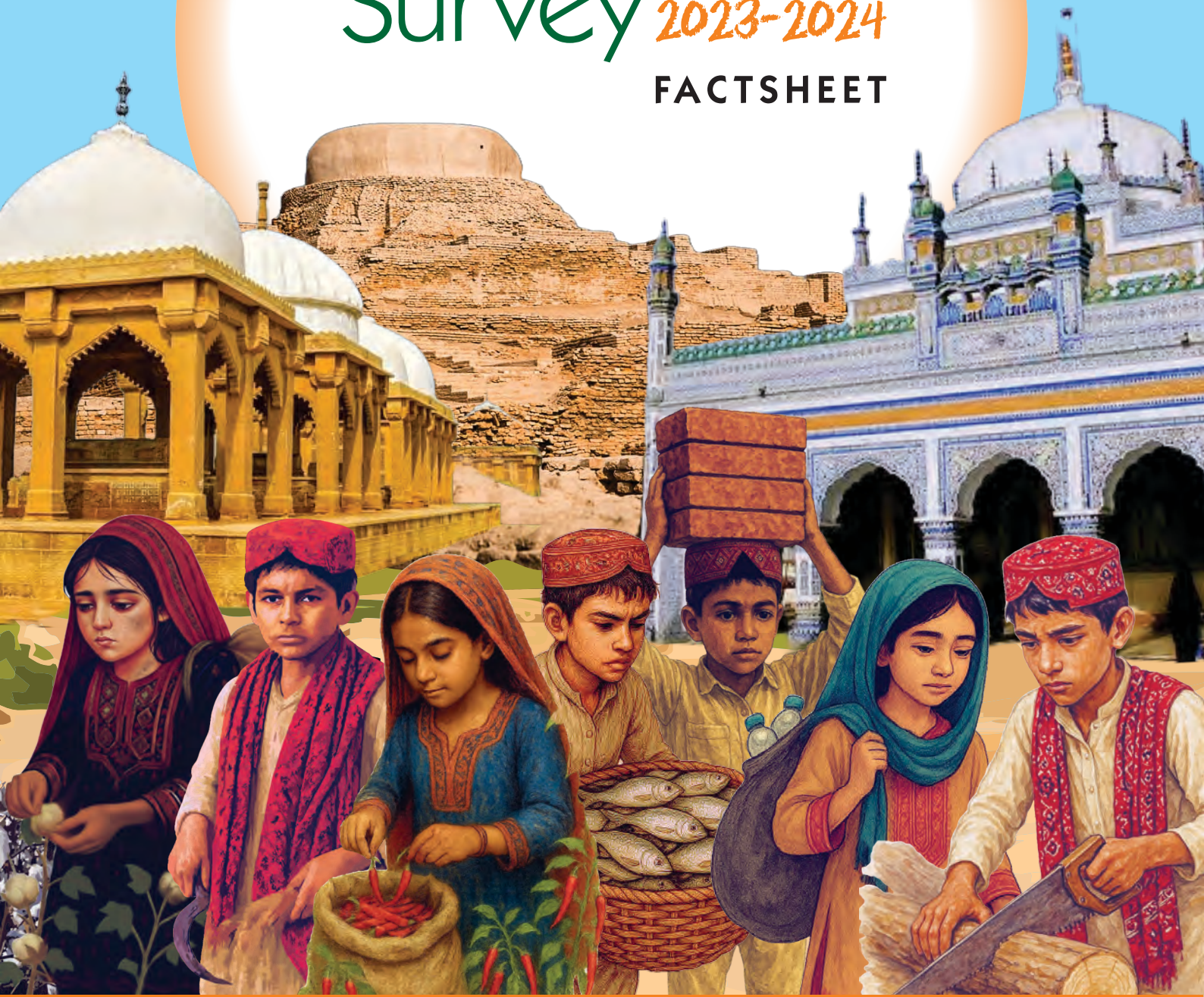


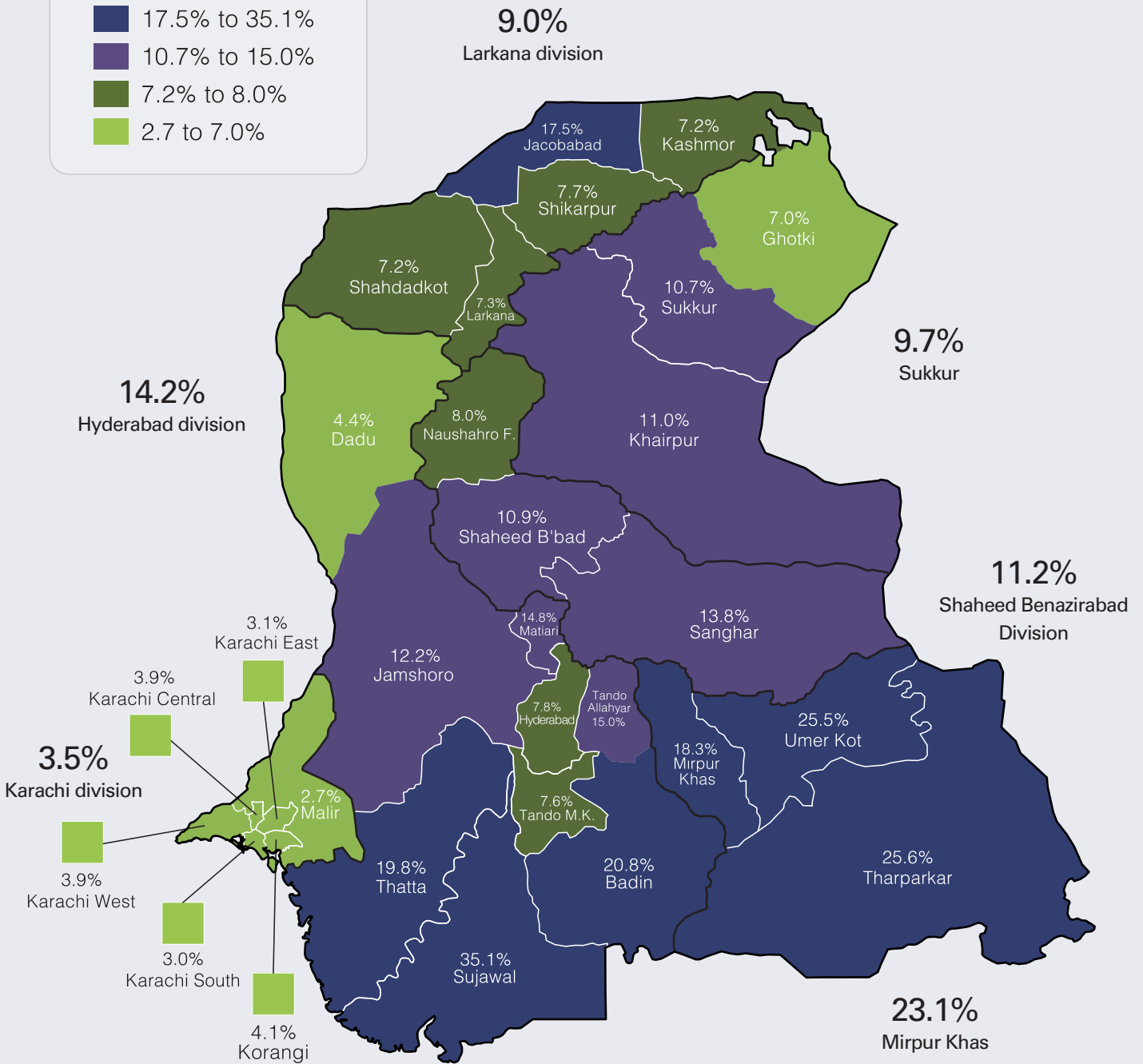
SINDH
Child Labour
Survey 2023-2024
FACTSHEET



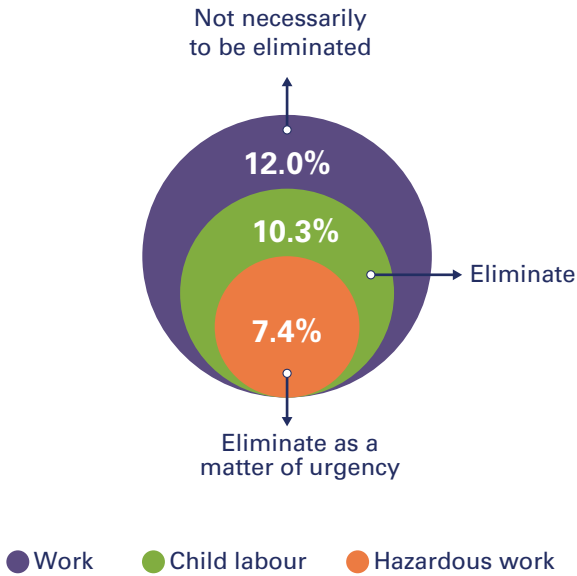
CHILD LABOUR PREVALENCE (5-17 YEARS)

CHILD LABOUR PREVALENCE

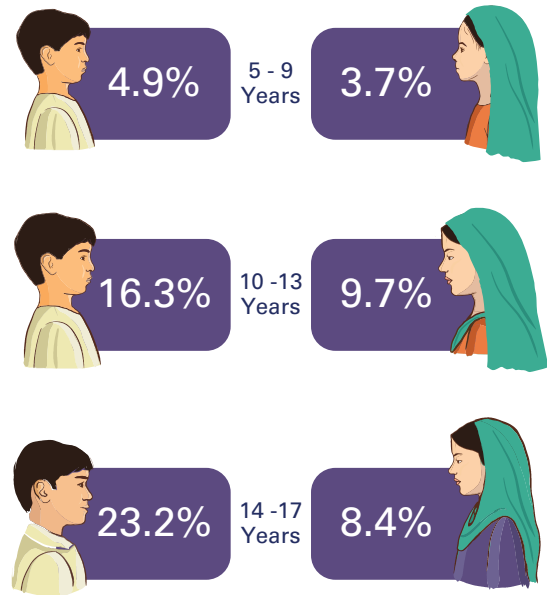
- 17.5% to 35.1%
- 10.7% to 15.0%
- 7.2% to 8.0%
- 2.7 to 7.0%



OVERALL PREVALENCE



CHILDREN IN CHILD LABOUR



CHARACTERISTICS AND CIRCUMSTANCES OF CHILD LABOUR

Households with at least **One Child aged 5-17 in Child Labour**



Urban: 9.0%



Rural: 25.8%



Overall: 17.5%

WORK SITUATION



Unpaid family worker
Total 49.6%
Boys 43.4%, Girls 63.8%



Labourer (non-agriculture)
Total 9.2%
Boys 9.1%, Girls 9.5%



Self-employed (non-agriculture)
Total 14.3%
Boys 17.5%, Girls 7.0%



Employee
Total 5%
Boys 5.3%, Girls 4.2%



Self-employed (agriculture)
Total 8.2%
Boys 8.4%, Girls 7.7%



Other
Total 3.6%
Boys 3.5%, Girls 3.9%



Labourer (agriculture)
Total 8.1%
Boys 10.0%, Girls 3.5%



OCCUPATIONS



Elementary occupations
Total 54.9%
Boys 52.4%, Girls 60.7%



Service and sales workers
Total 8.8%
Boys 12.1%, Girls 1.3%



Skilled agricultural, forestry and fishery workers
Total 18.7%
Boys 20.1%, Girls 15.4%



Plant and machine operators
Total 2.1%
Boys 2.8%, Girls 0.3%



Craft and related trades workers
Total 14.6%
Boys 11.7%, Girls 21.4%



Other occupations
Total 0.9%
Boys 1.0%, Girls 0.8%

INDUSTRIES



Agriculture, forestry, and fishing
Total 55.1%
Boys 54.9%, Girls 55.5%



Construction
Total 5.5%
Boys 7.7%, Girls 0.1%



Manufacturing
Total 12.4%
Boys 8.2%, Girls 22.3%



Other industries
Total 5.2%
Boys 6.5%, Girls 2.0%



Wholesale and retail trade
Total 10.8%
Boys 14.8%, Girls 1.4%



Accommodation and food service activities
Total 2.3%
Boys 3.1%, Girls 0.4%



Water collection
Total 7.0%
Boys 3.5%, Girls 15.1%



Activities of households as employers
Total 1.8%
Boys 1.2%, Girls 3.1%

MEDIAN HOURS WORKED BY AGE GROUP

Children aged 5-17 in child labour work a median of 25 hours per week.



5-11 years
14 hours



12-13 years
21 hours



14-17 years
38 hours

ACTIVITIES OF CHILDREN AGED 5-17

	Boys	Girls	With Disabilities
WORK ONLY	8.2%	5.9%	3.5%
ATTEND SCHOOL ONLY	64.5%	59.3%	24.6%
WORK AND ATTEND SCHOOL	7.0%	2.5%	1.3%
NO ACTIVITY	20.3%	32.3%	70.6%

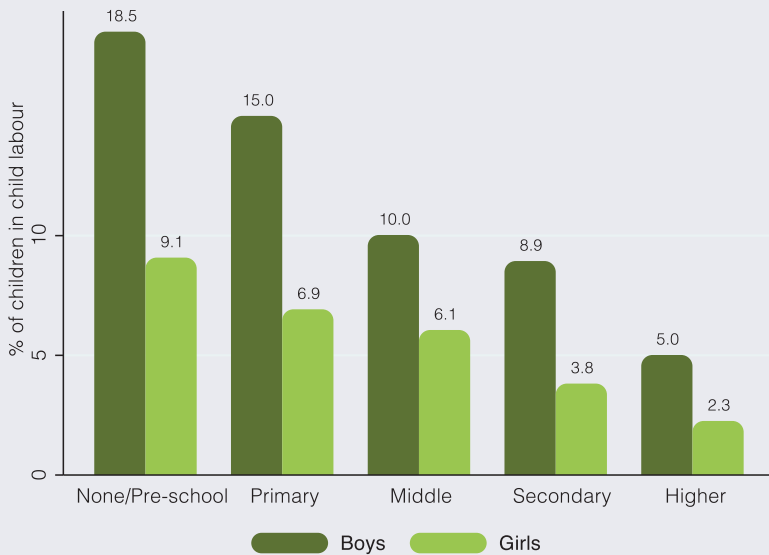
CHILDREN IN CHILD LABOUR ARE LESS LIKELY TO HAVE A BIRTH CERTIFICATE

Percentage of children with a birth certificate by child labour status



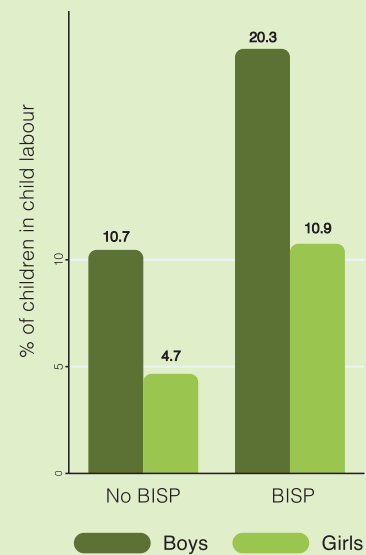
CHILDREN WITH LESS EDUCATED HEADS OF HOUSEHOLD ARE MORE LIKELY TO BE IN CHILD LABOUR

Percentage of children in child labour by household head's education (by gender)

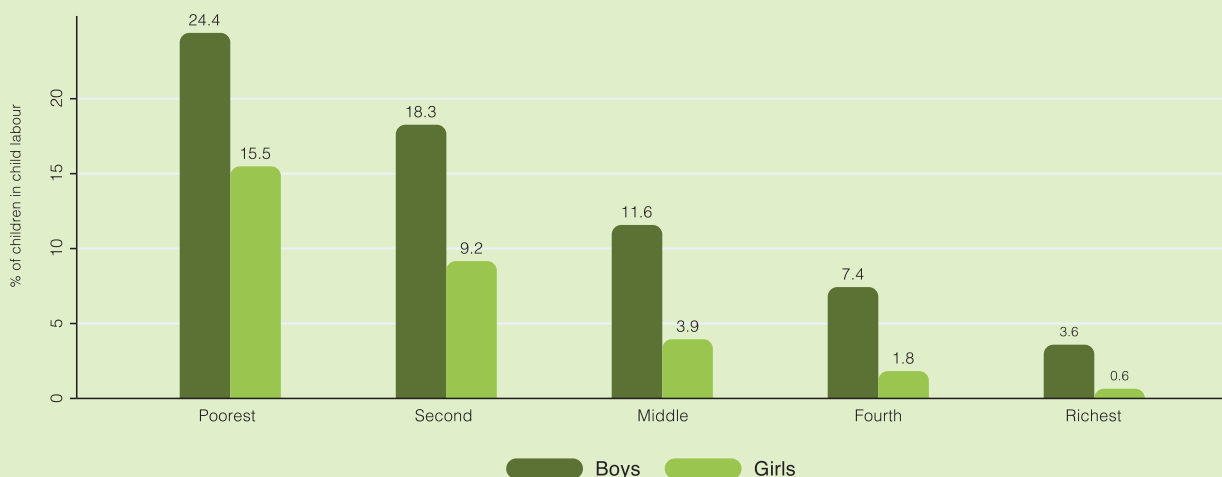


CHILDREN IN POORER HOUSEHOLDS ARE MORE LIKELY TO BE IN CHILD LABOUR

Percentage of children in child labour and household's receiving BISP (by gender)



Percentage of children in child labour by wealth quintile (by gender)

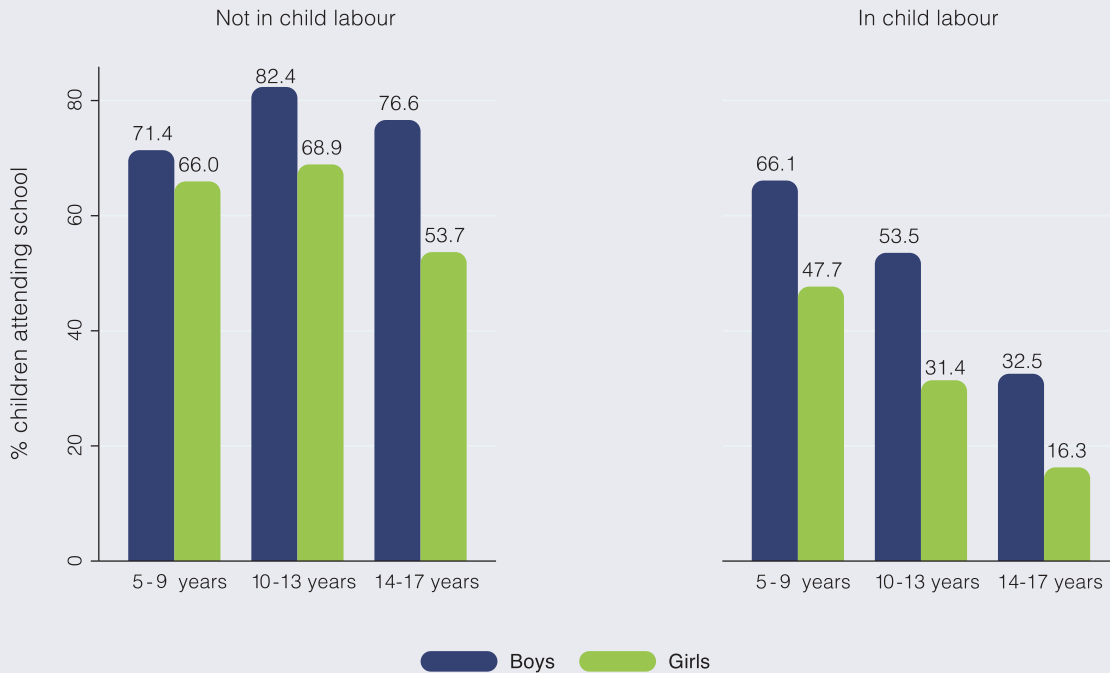


CONSEQUENCES

EDUCATION

Girls in child labour in all age groups are less likely to attend school. Boys in child labour in the age groups **12-13** and **14-17** are less likely to attend school, but boys in child labour in the age group **5-11** are more likely to attend school.

Percentage of children attending school by child labour status

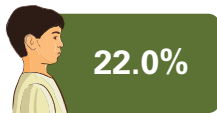


INJURIES AND HAZARDOUS CONDITIONS

The most common issue reported by children in child labour is suffering from **extreme fatigue** (20.2% of children 5-17 years in child labour)

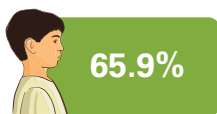
Children **aged 10-17** in child labour, working in hazardous conditions are injured or fall ill almost 3 times more often than those not in hazardous conditions

Total 22.2%



Children in child labour not in hazardous conditions were injured or fell ill

Total 64.7%



Children in child labour in hazardous conditions were injured or fell ill

PHYSICAL AND MENTAL HEALTH

Children in child labour are more likely to report a mental health problem. How many report a mental health problem?

10.7% of children not in child labour (ages 10-17) report having mild or more severe depression



20.1% of children in child labour (ages 10-17) report having mild or more severe depression



